



瑞安市俊鼎达机械有限公司
RUIAN JUNDINGDA MACHINERY CO.,LTD.

地址/ADD 浙江省温州瑞安市 东山街道鸿创园2栋
Building 2, Hongchuangyuan, Dongshan Street,
Rui'an City, Wenzhou, Zhejiang Province

电话/TEL 0577-6580 9762/6580 9763

邮箱/E-MAIL 2008xdjx@163.com

本公司保留对设备外观有关技术参数修改的权利,恕不另行通知
The company reserves the right to modify the technical parameters
of the appearance of the equipment without prior notice.



raijddjx.1688.com
www.jundingda.com



俊鼎达机械

JUNDINGDA MACHINERY

过滤器设备

材料复合设备

发泡技术的研发和生产

Filtration Equipment

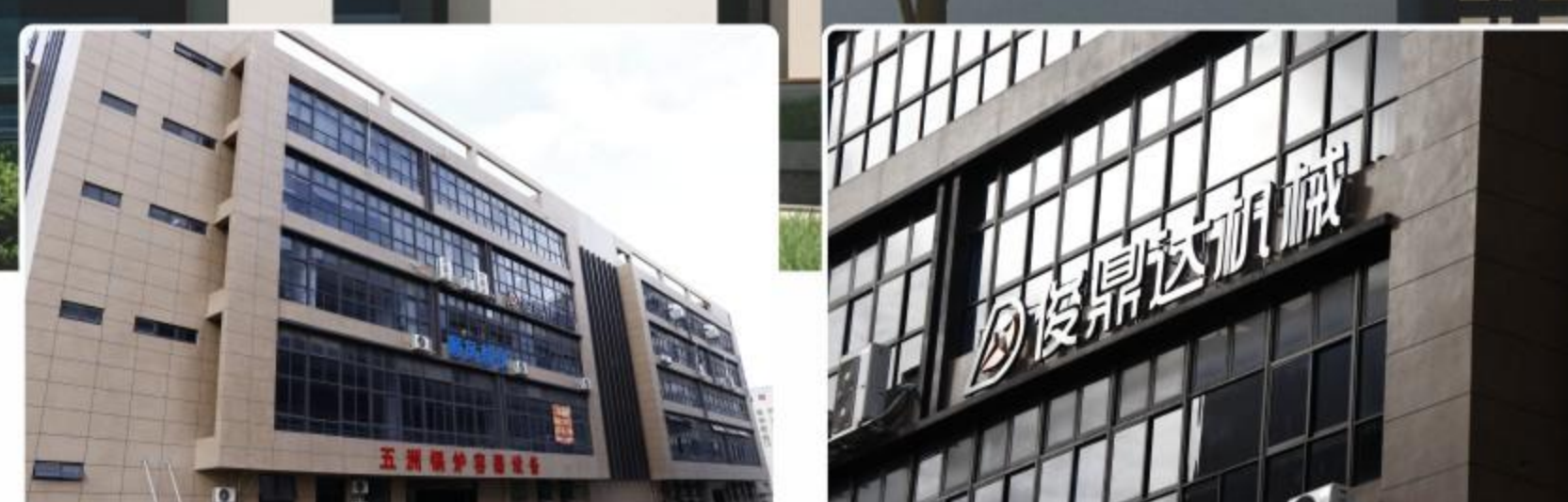
Material Lamination Equipment

Foaming Technology



自信·诚信·用心·创新

Confidence·Integrity·Intention·Innovation



瑞安市俊鼎达机械有限公司注册于2011年,是一家集研制,开发,生产过滤器设备,热熔胶机,喷涂复合设备的技术型企业。经过多年实践,俊鼎达公司热熔胶机产品广泛应用于如下(医用防护,家电,家纺,汽车,热熔胶涂布,包装,无纺布材料复合,卫生用品,滤清器,空气净化器等新风系统上面)。

公司主要产品:过滤器前、中、后端设备,熔喷滤材复合机,汽车车碳布复合机,热熔胶涂布机,热熔胶机,发泡热熔胶机,热熔胶枪等产品。

随着环保节能碳中和等要求,俊鼎达公司根据市场的需求,推出了一系列满足空气净化设备:PP,玻纤发泡上胶线,折纸机,配套要求的热熔胶机等产品,并与国内大部分企业相互配套使用。

从2014年到2024年10年时间我们交付给过滤材料行业碳布复合线和熔喷高效复合线每种在20套以上。热熔胶机产品在过滤净化行业占有率达80%左右市场份额。

为企业节能提高产能2021年正向研发国产第一套发泡热熔胶交机和发泡上胶线,每年交付市场在20套发泡热熔胶机应用。

公司遵循以技术开拓市场,以质量发展市场的宗旨。不断创新和学习。向客户提供高水平,高品质的设备。为客户带来更大的产品价值体验。感谢长期以来你们对俊鼎达产品的信任,支持和合作。

Ruian Jundingda Machinery Co., Ltd. was registered in 2011, is a technical enterprise integrating the research, development and production of filter equipment, hot melt adhesive machine and spraying composite equipment. After years of practice, Jundingda hot melt adhesive machine products are widely used in the following (medical protection, home appliances, home textile, automotive, hot melt adhesive coating, packaging, non-woven material composite, sanitary products, filters, air purifiers and other fresh air systems above).

The company's main products: filtration full line equipment, meltblown filter composite machine, automobile carbon cloth composite machine, hot melt adhesive coating machine, hot melt adhesive machine, foaming hot melt adhesive machine, hot melt adhesive gun and other products.

With the environmental protection and energy saving carbon neutral and other requirements, Jundingda according to market demand, push out a series of short-tailed to meet the air purification equipment: PP, glass fibre foam gluing line, paper folding machine, supporting the requirements of the hot melt adhesive machine and other products, and most of the domestic enterprises with each other supporting the use of.

From 2014 to 2024, we will deliver more than 20 sets of carbon cloth composite line and meltblown high-efficiency composite line to the filtration material industry in 10 years. Hot melt adhesive machine products in the filtration and purification industry share of about 80% market share.

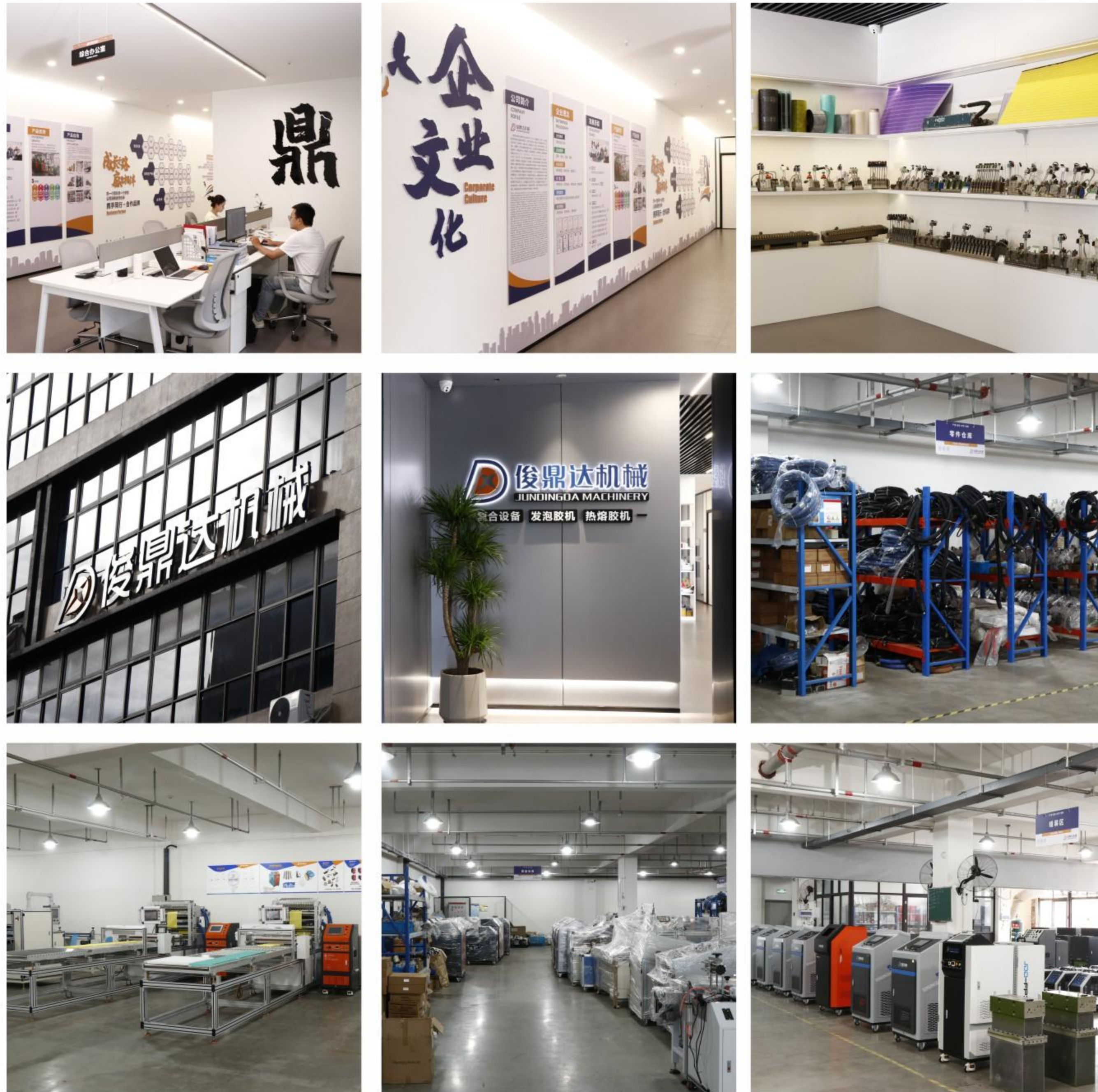
Energy saving for enterprises to improve production capacity in 2021 is developing the first set of domestic hot melt adhesive foaming machine and foam gluing line, the annual delivery of the market in 20 sets of hot melt adhesive foaming machine applications.

The company follows the technology to develop the market, the quality of the development of the market purpose. Continuous innovation and learning. We provide customers with high level and high quality equipment. For customers to bring greater product value experience. Thank you for your trust, support and co-operation to Jundingda products for a long time.

HONOR CERTIFICATES 企业荣誉



Enterprise Environment 企业环境



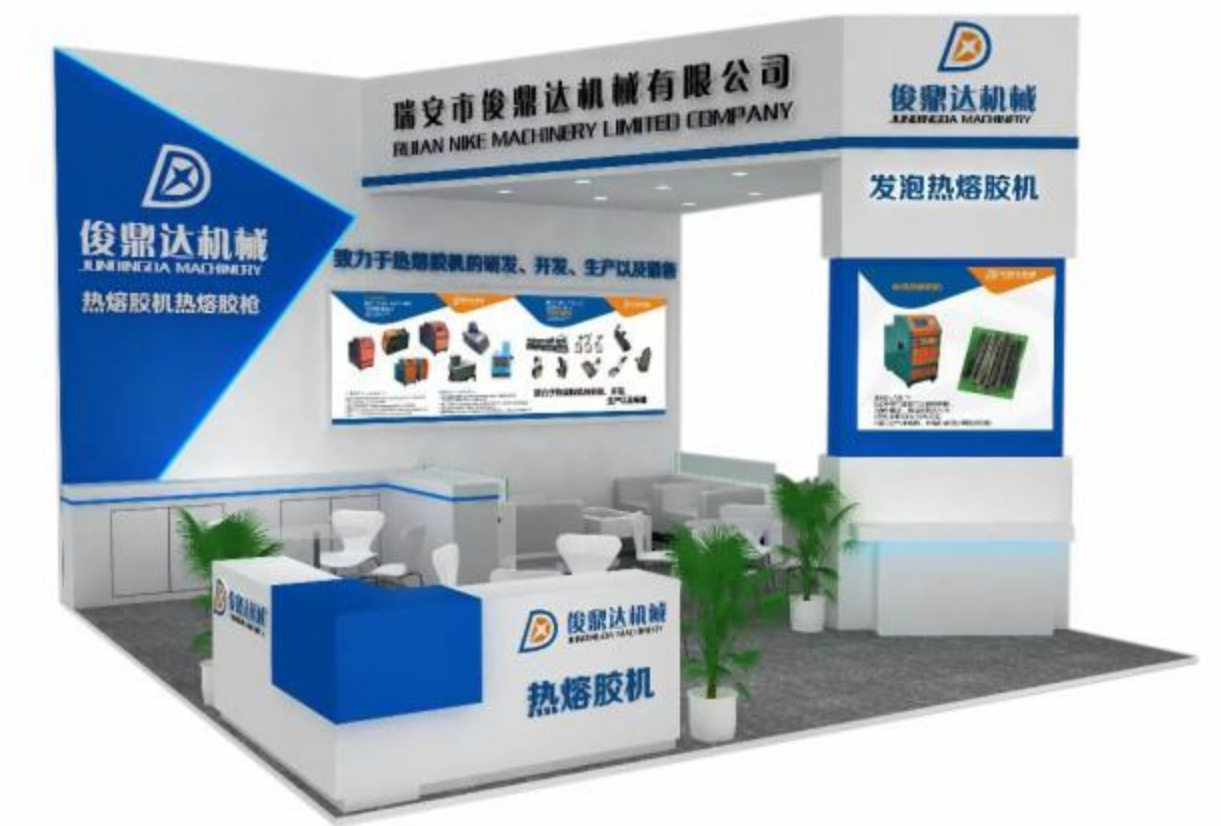
合作伙伴 Our Partners

设备商: 德嘉, 普兰, 雷泰, 双佳, 宝滤, 丰汜, 同畅, 宏达机械, 坤泰, 金峰, 庞氏, 高崎, 美缇克勒斯。
材料生产商: 亿茂, 凤凰, 方太, 金海, 恒永, 桐乡健民, 同康, 高博集团, 利韬, 标康, 宏大, 创洁, 富瑞邦, 禾海, 常州联盈, 托普斯。
应用商: 宝源, 雪圣, 瑞利杰, 阿波罗, 上品, 朝晖, 金海, 再升科技, 大众汽车, 安卓卫材, 许州医疗, 米果, 同创实业, 长城, 吉利, 奇瑞汽车, 海尔, 美的, 格力空调。

Exhibition Moments

展会风采

俊鼎达公司通过线上线下各种途径,
与中外客商建立商业往来。
信息互通,合作共赢。



Catalogue 目录

XDCZ 55-1100-S全自动折纸机

XDCZ 55-1100-S Automatic Paper Folding Machine

XD-700PP注胶机

XD-700PP Gluing Machine

XD-FP700PP发泡高速上胶线

XD-FP700PP Foaming High-speed Gluing Line

XD-TB1800mm碳布熔喷滤材复合机

XD-TB1800mm Carbon Cloth -- Meltblown Laminating Machine

XDLCFH-700mm滤材复合机

XDLCFH-700mm Filter Materials Laminating Machine

XD-PF-1800mm热熔胶喷胶复合机

XD-PF-1800mm Hot Melt Spray Laminating Machine

XD-3PF1800m多层热熔胶喷胶复合机

XD-3PF1800m Multi-Layer Hot Melt Spray Laminating Machine

XD-PURPF1800mmPUR喷胶复合机

XD-PURPF1800mm PUR Spray Laminating Machine

XD-TB800-2400mm热熔胶涂布复合机

XD-TB800-2400 Hot Melt Coating Laminating Machine

XD-QHLT2000半自动贴边机

XD-QHLT2000 Semi-automatic Edge-Bonding Machine

XD-LXTB-1900空调滤全自动贴边机

XD-LXTB-1900 Cabin Filter Automatic Edge-Bonding Machine

XD-4HX800滤芯修边机

XD-4HX800 Filter Trimming Machine

XD-SZ三轴点胶机

XD-SZ Three-axis Glue Dispensing Machine

XD-YXT500圆形端盖涂胶机

XD-YXT500 Round End Cover Gluing Machine

XD-YXT300mm中线贴胶机

XD-YXT300mm Medium line Gluing Machine

发泡热熔胶机

Foam Hot Melt Adhesive Machine

XDCZ 55-1100-S全自动折纸机

XDCZ 55-1100-S Automatic Paper Folding Machine



■ 技术参数 Specification:

产品最大宽度 Max Width	1000mm	预热功率 Pre-Heater Power	8kw
可调折高范围 Adjustable Pleating Height	8-65mm	温控范围 Heating Temp	常温Normal-250°
褶皱速度(可调) Pleating Speed(Adjustable)	0-140折/分 Pleats/Min	工作气压 Working Air Pressure	0.6MPa
电源电压 Power Supply	380v/50hz	外形尺寸 Size	L2300×W1900×H1700
电机功率 Motor Power	8kw	机器重量 Weight	1200KG

■ 主要特点 Characteristic:

1. 折纸机采用上下刀交替方式完成褶皱工作,刀距通过电脑自动调整,可达到各种不同折高的要求,尺寸准确,平整如一。
滤纸在折纸机上完成自动打点计数,褶皱加工和预热定型等工作。
 2. 设备配置:低压电器(施耐德)、伺服电机(汇川)、PLC(汇川)、触摸屏(汇川)、气缸(亚德客)、直线导轨(亚德客)
1. Folding paper folding machine adopts the upper and lower knives to complete the folding work alternately, the distance of the knife is adjusted automatically by the computer, so that it can achieve the requirements of different folding heights, and the dimensions are accurate and flat as one. Filter paper in the paper folding machine to complete the automatic punching point counting, folding processing and preheating and shaping work.
 2. Equipment configuration: low-voltage electrical (Schneider), servo motors (Inovance) PLC (Inovance), touch screen (Inovance), cylinders (Airtac), linear guides (Airtac)

XD-700PP注胶机

XD-700PP Gluing Machine

- | | |
|------------------------|--|
| 1. 适应各种不同规格的生产。 | 1. Adapt to a variety of different specifications of production. |
| 2. 熔胶速度快,可通过伺服调节胶量的大小。 | 2. The melting speed is fast, the size of the glue can be adjusted by servo. |
| 3. 此机生产效率高,产品效果好。 | 3. This machine has high production efficiency and good product effect. |



■ 主要特点 Characteristic:

1. 产品最大宽度:820mm,摺纸高度:8-80mm,生产速度:4-27m/min
 2. 胶条间距:25.4mm。胶条数量:2X26条(有正反面,交叉,波峰,波谷断胶功能,每个喷嘴全部带电磁阀)
 3. 电源电压:380V/50HZ,机器总功率:17.5KW含热熔胶机7.5kw,工作气压:0.6mpa
 4. 整机PLC伺服控制器、伺服电机品牌:日本富士×2
 5. 触摸屏品牌:台湾威纶通×1
1. Product Width: 820mm;Production Speed: 4-27m/min;Nozzles spacing: 25.4mm
 2. Nozzles Spacing: 25.4mm. Number of adhesive stripes: 2X26 strips (with front and back, cross, peak, and valley breaking functions, all equipped with solenoid valves on each nozzle)
 3. Power supply voltage: 380V/50HZ, total machine power: 17.5KW including hot melt adhesive machine 7.5KW, Working pressure: 0.6mpa.
 4. PLC servo controller, servo motor brand: Japan Fuji * 2
 5. Touchscreen brand: Taiwan WEINVIEW*1

XD-FP700PP发泡高速上胶线

XD-FP700PP Foaming High-speed Gluing Line

- | | |
|---|--|
| 1. 产品最大宽度:820mm,折纸高度:10-60mm,生产速度:4-27m/min | 1. Maximum width of product: 820mm, folding height: 10-60mm, production speed: 4-27m/min. |
| 2. 胶条间距:25.4mm,胶条数量:2X26条(有断胶功能,每个喷嘴全部带电磁阀) | 2. Nozzles Spacing: 25.4mm, the number of glue strips: 2X26 (with the function of breaking glue, each nozzle with solenoid valve). |
| 3. 电源电压:380V/50HZ,工作气压:0.6mpa。 | 3. Power supply voltage: 380V/50HZ, working air pressure: 0.6mpa. |
| 4. 整机三菱PLC控制、日本富士伺服驱动。 | 4. The whole machine is controlled by Mitsubishi PLC, Japan Fuji servo drive. |



■ 主要特点 Characteristic:

1. 熔胶速度快,可通过伺服调节输胶量的大小。
 2. 采用发泡热熔胶机上胶,省胶35-50%之间,发泡效率35-55%。
 3. 发泡气体氮气或干燥后的空气。
 4. 适合产品大折距支撑,圆形产品上胶提高柔软性和可弯曲性。
 5. 加湿器滤网上胶增加加湿量。
1. Fast melting speed, the amount of glue can be adjusted by servo.
 2. Using foam hot melt glue machine glue, saving between 35-50%, foaming efficiency 35-55%.
 3. Foaming gas nitrogen or dried air.
 4. Suitable for large folding distance support, round product gluing improves softness and bendability.
 5. Glue on the humidifier filter to increase the humidification amount.

XD-TB1800mm碳布熔喷滤材复合机

XD-TB1800mm Carbon Cloth -- Meltblown Laminating Machine

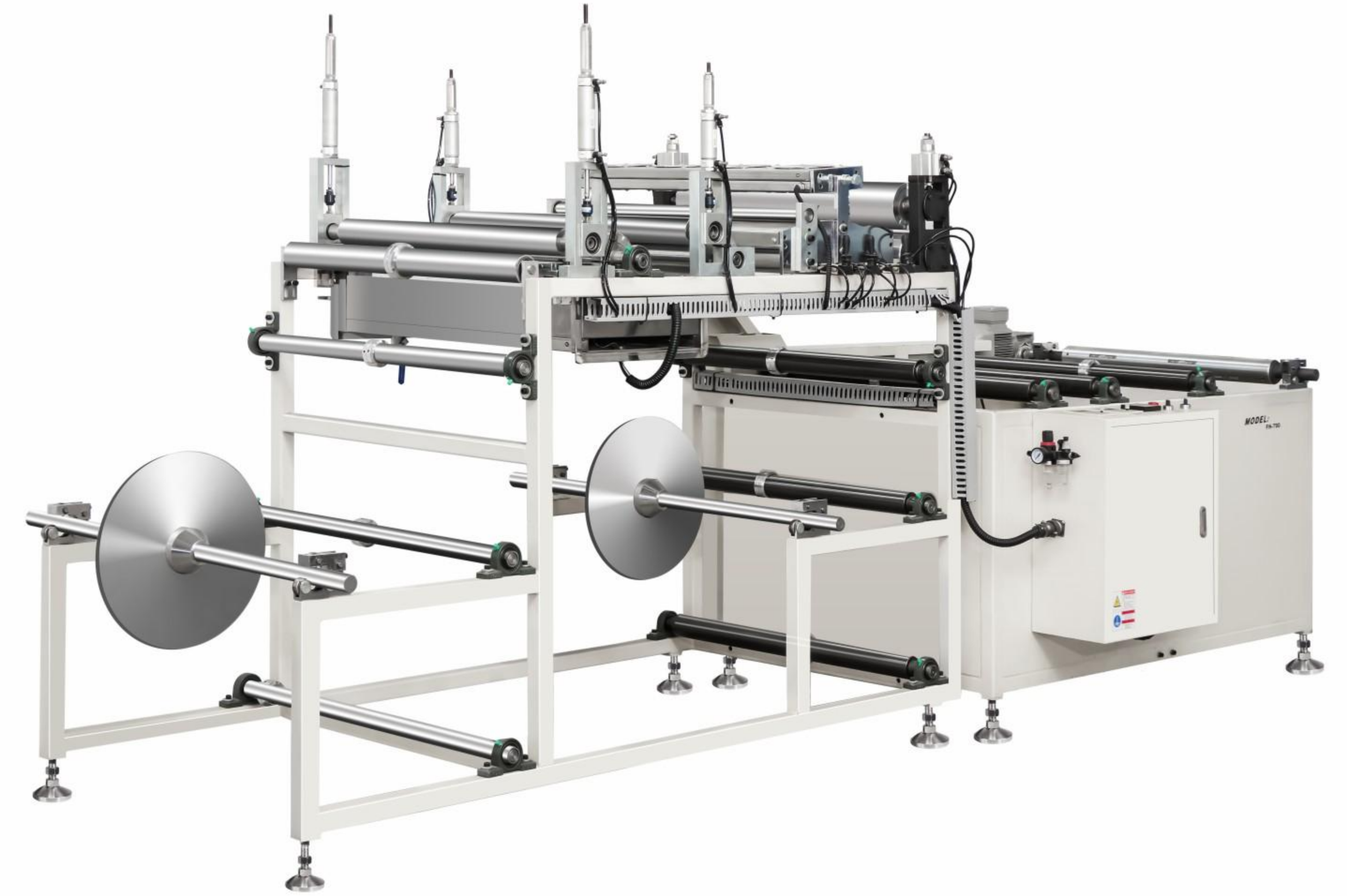


主要特点 Characteristic:

1. 本机采用人机界面控制, 集合电动上料, 光电纠偏, 自动张力调整, 喷胶撒碳复合于一体。
(材料经放卷, 纠偏喷胶后撒碳, 喷胶与上层材料一起复合, 平压, 分切后进入收卷系统)。
 2. 喷胶量采用电脑控制, 随主机速度快慢自动调整。喷胶宽度采用拼接组合方式, 根据材料宽度做到灵活应用。
 3. 采用环保热熔胶。(取代传统的胶粉搅拌烘道工艺)。
 4. 该机主要用于空气滤材, 夹碳布生产。提高产品透气量。
1. This machine adopts human-machine interface control, and combines electric loading, photoelectric deviation correction, automatic tension adjustment, spraying and spreading carbon composite in one. (The material is put on the roll, corrected and sprayed with carbon, sprayed with the upper layer of the material together with the composite, flat pressure, slitting and then enter the winding system).
 2. The amount of spraying glue is controlled by computer and adjusted automatically with the speed of the host. Spraying width adopts splicing combination, according to the width of the material to achieve flexible application.
 3. Adopting environmentally friendly hot melt adhesive. (Replace the traditional glue powder mixing and baking process).
 4. This machine is mainly used for air filter material and carbon cloth production. Improve the air permeability of the products.

XDLCFH-700mm滤材复合机

XDLCFH-700mm Filter Materials Laminating Machine



技术参数 Specification:

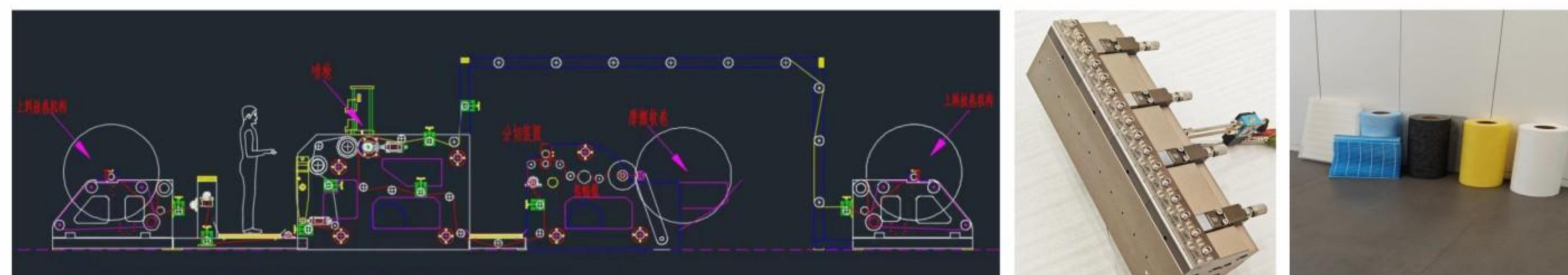
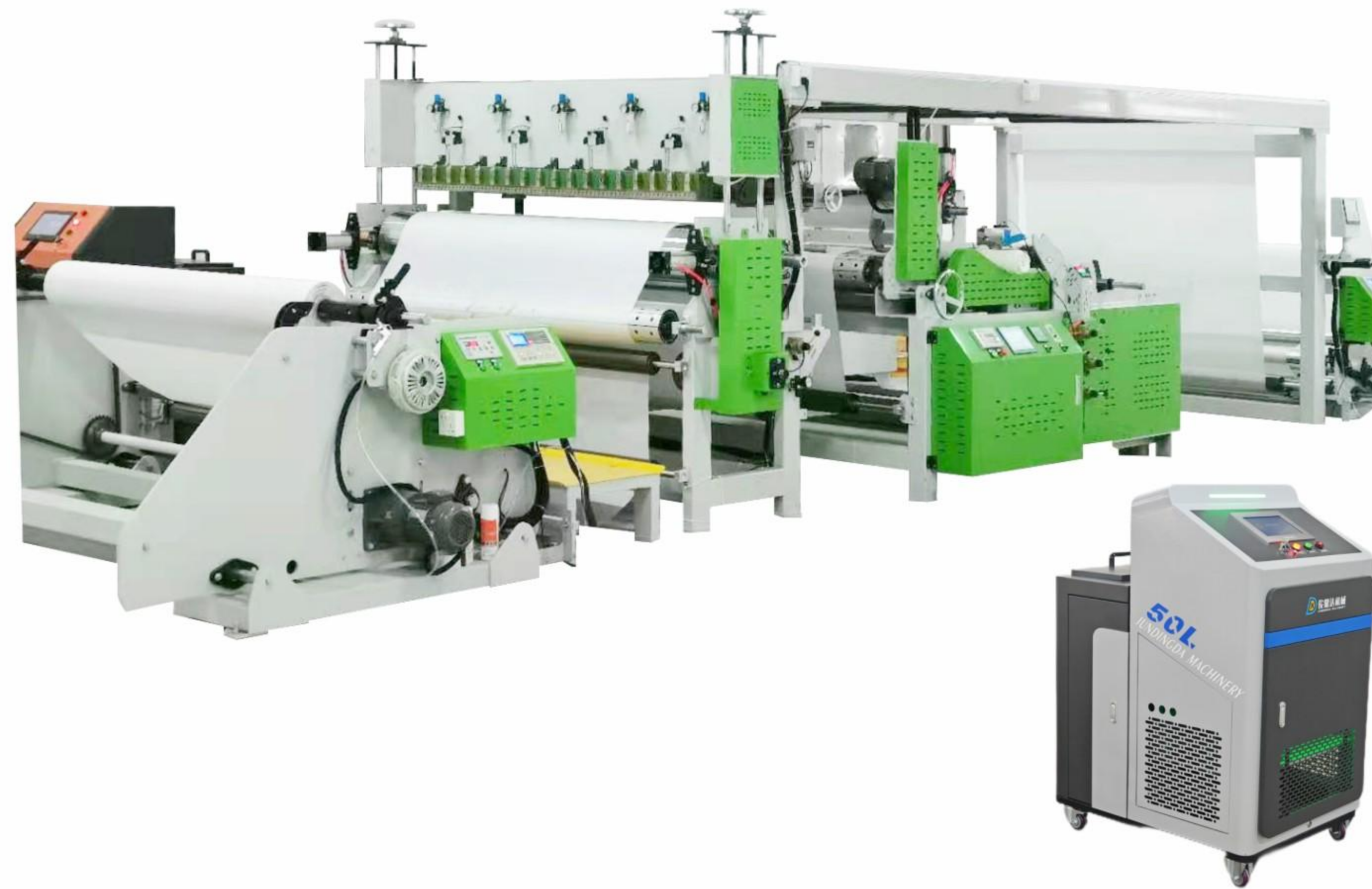
生产能力 Production Capability	15米/分 m/min	电机功率 Motor Power	0.75kw
材料宽度 Materials Width	≤700-1600mm	电源电压 Power Supply	380V/50HZ
材料卷径 Materials Coil Diameter	≤Φ800-1800mm	工作气压 Working Air Pressure	0.6MPa
加热功率 Heating Power	4kw-12kw	机器重量 Weight	500kg
外形尺寸 Size	4161×1170×1400mm(L×W×H)		

主要特点 Characteristic:

1. 此机可自动完成铁丝网与无纺布的复合粘结过程, 操作方便、效率高、平整牢固。
 2. 工作速度可通过变频器予以调节, 以适应不同情况的生产。
 3. 胶温可任意设定调节。
1. This machine can automatically complete the process of composite bonding of wire mesh and non-woven fabrics, which is easy to operate, highly efficient, flat and firm.
 2. The working speed can be adjusted by frequency converter to adapt to the production of different situations.
 3. The glue temperature can be set and adjusted arbitrarily.

XD-PF-1800mm热熔胶喷胶复合机

XD-PF-1800mm Hot Melt Spray Laminating Machine



主要特点 Characteristic:

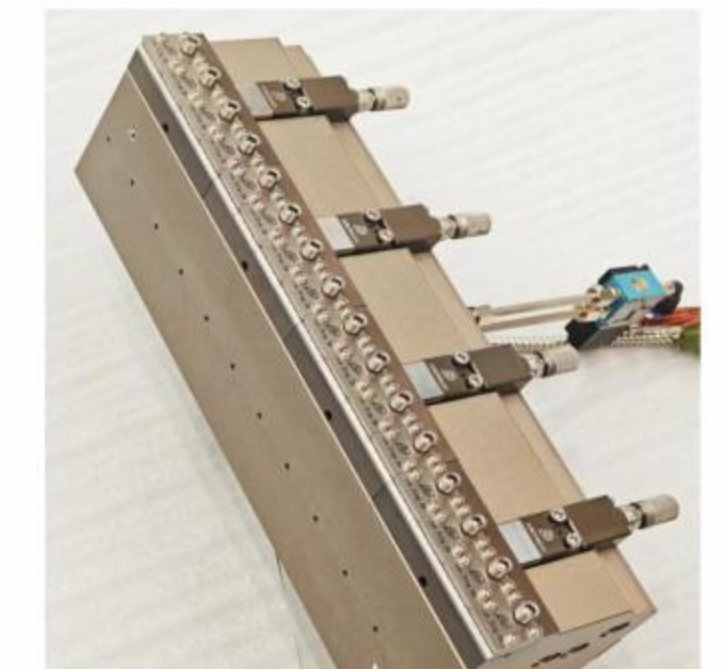
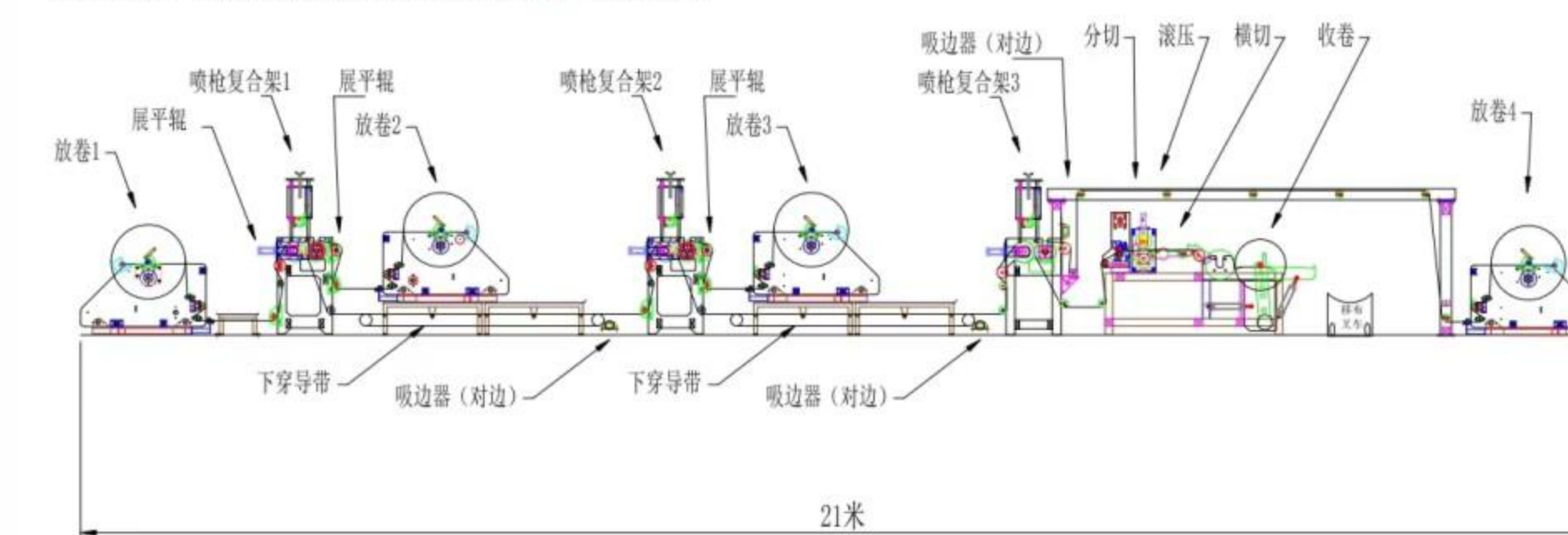
1. 本机采用PLC集成控制, 电动上料, 伺服纠偏, 自动张力, 喷胶复合分切于一体。
 2. 喷胶与主机速度自动同步, 小纤维喷枪25mm 拼接组合, 适用更多产品宽度。
 3. 采用聚烯烃或压敏热熔胶复合材料环保无气味。
 4. 可用于无纺布, 熔喷透气膜, 汽车隔音棉, 空调被, 卫材和医用防护服材料等复合。
1. This machine adopts PLC integrated control, electric loading, servo deskewing, automatic tension, glue spraying compound slitting in one.
 2. The spray speed is automatically synchronized with the main machine, and the small fiber spray gun 25mm splicing combination is suitable for more product widths.
 3. Adopting polyolefin or pressure-sensitive hot melt adhesive composite material is environmentally friendly and odourless.
 4. It can be used for compounding of non-woven fabrics, meltblown breathable film, car soundproof cotton, air-conditioning quilt, sanitary materials and medical protective clothing materials.

XD-3PF1800m多层热熔胶喷胶复合机

XD-3PF1800m Multi-Layer Hot Melt Spray Laminating Machine



俊鼎达-1600 3喷胶4层布熔喷复合机-整体方案2 2021/12/01



主要特点 Characteristic:

1. 采用小纤维喷胶低克重喷胶工艺, 将2-4层以上的采用叠加复合在一起。
 2. 喷胶克重随主机快慢自动变化。
 3. 整机采用PLC集成控制, 一键启动同步所有参数。集合电动上料, 纠偏, 喷胶复合收卷于一体。
 4. 适合多层特种材料复合应用, 玻璃纤维棉, 航空隔音棉, 无纺布和其他材料复合等。
1. Adopting small fibre spray glue low gram weight spray glue process, will be more than 2-4 layers using stacked composite together.
 2. The weight of spraying glue changes automatically with the speed of the host.
 3. The whole machine adopts PLC integrated control, one-key start to synchronise all parameters. The collection of electric loading, correcting, spraying glue composite winding in one.
 4. Suitable for multi-layer special material composite application, glass fibre cotton, aviation acoustic cotton, non-woven fabrics and other materials composite.

XD-PURPF1800mmPUR喷胶复合机

XD-PURPF1800mm PUR Spray Laminating Machine



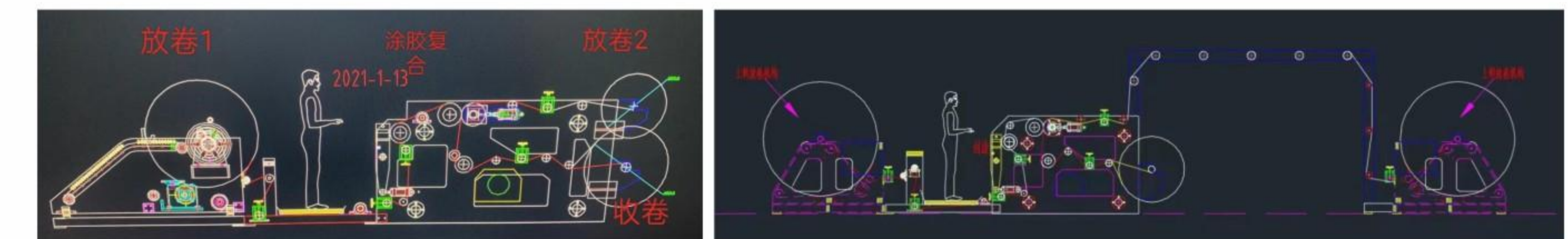
主要特点 Characteristic:

1. 采用特殊纤维喷胶工艺, 将2层材料复合。
2. 聚氨酯PUR 湿气固化, 不可二次熔化。
3. 复合后的材料具有耐高温耐酸碱耐水洗等特点。
4. 整机PLC 集成控制, 喷胶系统自动跟踪。
5. 采用桶式封闭型热熔胶机, 氮气隔离保护胶体。

1. Using special fibre spray adhesive process to laminate 2 layers of material.
2. Polyurethane PUR is cured by moisture and cannot be melted twice.
3. The composite material is resistant to high and low temperatures, acid and alkali resistance, and water washing.
4. PLC integrated control of the whole machine, automatic tracking of the glue spraying system.
5. Adopt barrel type closed hot melt glue machine, nitrogen gas isolation to protect the glue.

XD-TB800-2400mm热熔胶涂布复合机

XD-TB800-2400 Hot Melt Coating Laminating Machine



主要特点 Characteristic:

1. 涂布速度与供胶量自动同步。
2. 胶机选用智能型多层加热胶机, 特氟龙高温处理。
3. 主传动辊采用水冷扩大基材使用范围。
4. 整机采用PLC 集成控制一键启动。

1. The coating speed is automatically synchronised with the glue supply.
2. The glue machine adopts intelligent multi-layer heating glue machine with Teflon high temperature treatment.
3. The main drive roller is water-cooled to expand the range of substrate use.
4. The whole machine adopts PLC integrated control with one key start.

XD-QHLT2000半自动贴边机

XD-QHLT2000 Semi-automatic Edge-Bonding Machine



主要特点 Characteristic:

1. 本机采用AC-220V, 触摸屏控制, 画面中英文一键切换。
 2. 步进电机自动定长输送边条长度(可同时输送不同长度边条), 配合可调胶枪(5-80mm 任意可调)。
 3. 根据生产速度可以选择自动续边涂胶和单次涂胶。
 4. 胶机选配10-20L确保熔胶速度。
1. This machine adopts AC-220V, touch screen control, one key to switch between English and Chinese.
 2. The stepping motor automatically delivers the length of the side strips (different lengths of side strips can be delivered at the same time), with adjustable glue gun (5-80mm adjustable).
 3. According to the production speed, you can choose to apply glue automatically and single time.
 4. The glue machine is equipped with 10-20L to ensure the melting speed.

XD-LXTB-1900空调滤全自动贴边机

XD-LXTB-1900 Cabin Filter Automatic Edge-Bonding Machine

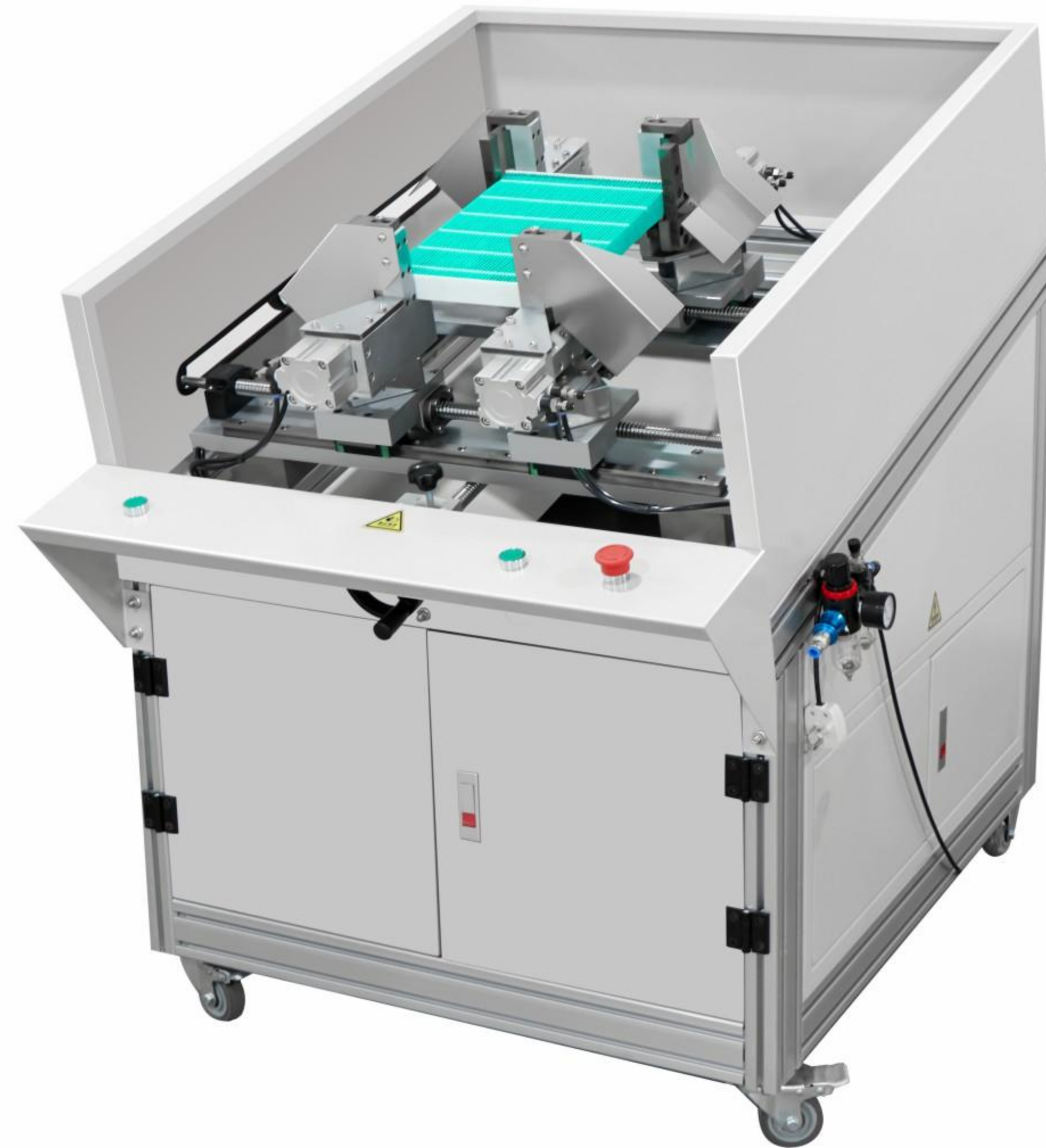


主要特点 Characteristic:

1. 整机采用PLC 伺服控制, 适合产品连续贴边。
 2. 加工尺寸: max:600×500×100mm, min:150×150×10mm。
 3. 适合硬软PP 条, 厚度0.5mm-3mm。
 4. 风冷固化, 可选自动剪切。
1. The whole machine adopts PLC servo control, suitable for continuous lamination of products.
 2. Processing size: max:600×500×100mm, min:150×150×10mm.
 3. Suitable for hard and soft PP strips, thickness 0.5mm-3mm.
 4. Air-cooled curing, optional automatic shear.

XD-4HX800滤芯修边机

XD-4HX800 Filter Trimming Machine



■ 主要特点 Characteristic:

1. 该机采用底刀固定,上刀气动推送形成剪刀形式切断材料(切刀采用合金材料加工热处理,硬度60°)。
2. 切刀宽度80mm,同时剪切4个边角。
3. 加工尺寸: max:650×700mm, min:120×120mm。
4. 机架采用烤漆,丝杆带滑轨调整切刀速度。

1. The machine adopts the bottom knife fixed, the upper knife pneumatic push to form a scissors form cutting materials (cutter using alloy material processing heat treatment, hardness 60°).
2. The width of the cutter is 80mm, cutting 4 corners at the same time.
3. Processing size: max: 650 × 700mm, min: 120 × 120mm.
4. The frame is painted, and the screw with slide rail adjusts the speed of the cutter.

XD-SZ三轴点胶机

XD-SZ Three-axis Glue Dispensing Machine



单工位



双工位

■ 主要特点 Characteristic:

1. 代替人工特点的点胶作业,实现自动化生产,简单,便利,高速精准。
2. 程式文件通过U盘上传下载,方便资料管理及保存。
3. 机器带有对针控制,不需外接示教盘,比同类调试简单方便。
4. CAD图形识别,简化示教,轨迹精准。
5. 采用X,Y,Z三轴联动,可以对任意图形单次或多次上胶。
6. 单工位和双工位可选,满足不同的工作效率。

1. Replace the manual characteristics of the dispensing operation, to achieve automated production, simple, convenient, high-speed and accurate.
2. The programme file can be uploaded and downloaded through USB stick, which is convenient for data management and storage.
3. The machine is equipped with needle control, no need to connect external teaching disc, easier and more convenient than similar debugging.
4. CAD graphic recognition, simplified teaching, accurate trajectory.
5. Adopting X,Y,Z three-axis linkage, it can be used for single or multiple gluing of any graphics.
6. Single station and double station can be selected to meet different work efficiency.



XD-YXT500圆形端盖涂胶机

XD-YXT500 Round End Cover Gluing Machine



单工位

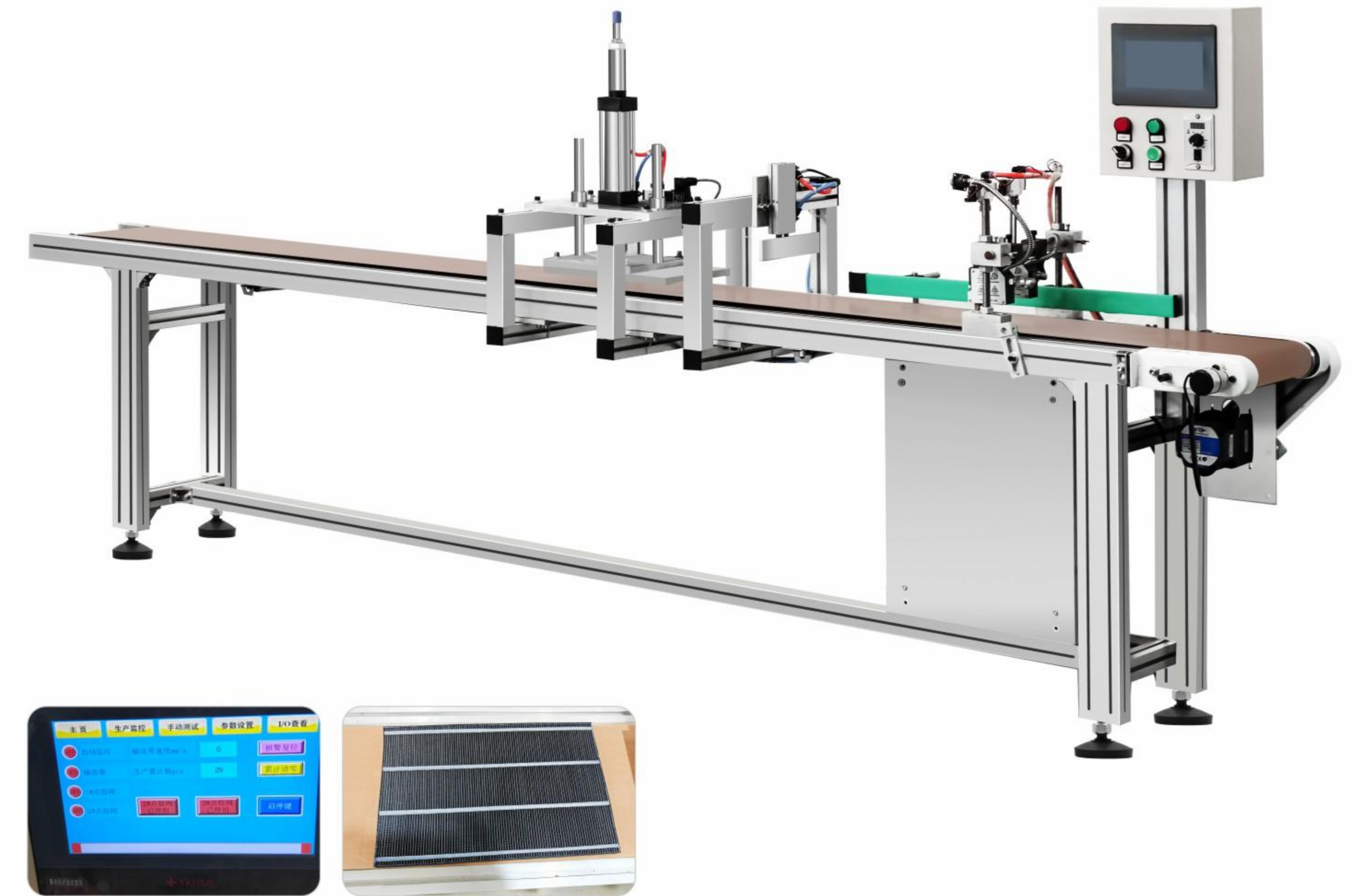
双工位

主要特点 Characteristic:

1. 本机采用AC-220V, 触摸屏控制, 画面中英文一键切换。
 2. 步进电机自动定长输送边条长度(可同时输送不同长度边条),配合可调胶枪(5-80mm 任意可调)。
 3. 根据生产速度可以选择自动续边涂胶和单次涂胶。
 4. 胶机选配10-20L确保熔胶速度。
1. This machine adopts AC-220V, touch screen control, one key to switch between English and Chinese.
 2. The stepping motor automatically delivers the length of the side strips (different lengths of side strips can be delivered at the same time), with adjustable glue gun (5-80mm adjustable).
 3. According to the production speed, you can choose to apply glue automatically and single time.
 4. The glue machine is equipped with 10-20L to ensure the melting speed.

XD-YXT300mm中线贴胶机

XD-YXT300mm Medium line Gluing Machine



主要特点 Characteristic:

1. 本机采用AC220V, 输送带定位模式人工摆放产品。
 2. 配置组合独立控制胶枪, 任意选择上胶间距和胶线数量。
 3. 通过光电检测产品PLC 控制注胶的长短。
 4. 配置10-20L胶机, 实现完美上胶。
1. This machine adopts AC220V, conveyor belt positioning mode to place products manually.
 2. Configuration combination of independent control glue gun, arbitrary choice of glue spacing and the number of glue lines.
 3. The length of glue injection is controlled by PLC through photoelectric detection of products.
 4. Equipped with 10-20L glue machine to achieve perfect gluing.

发泡热熔胶机

Foam Hot Melt Adhesive Machine

产品特点 Product Characteristics:

1. 高温特氟龙处理, 高效节能, PLC操作, 精准控温。
1. High temperature Teflon treatment, high efficiency and energy saving, PLC operation, accurate temperature control.
2. 结构紧凑, 耐用性强, 易于维护。
2. Compact, durable and easy to maintain.

应用范围 Features:

广泛应用于一次性卫材、包装、家具、过滤器、服装面料、防水卷材等行业
Widely used in disposable sanitary materials, packaging, furniture, filters, garment fabrics, waterproof materials and other industries.

外壳颜色 Case color 

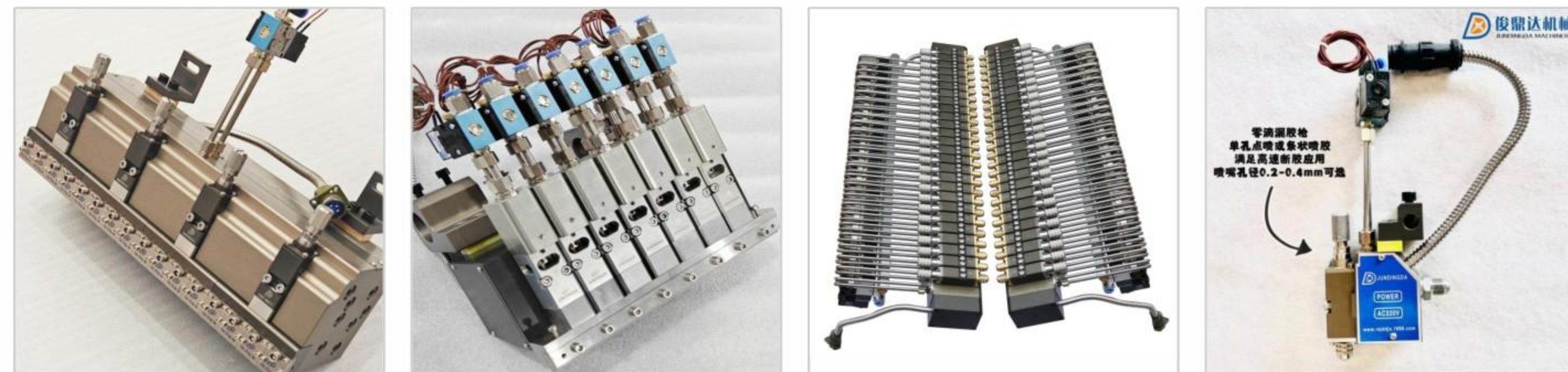


热熔胶枪

Hot Melt Glue Series

提供多种配件, 包括胶枪、阀体、加热器等, 功能齐全

A wide range of accessories are available, including glue guns, valve bodies, heaters, etc., which are fully functional.



应用范围

APPLICATIONS



空气滤清器行业
Filtration Industry



卫生用品行业
Sanitary Products Industry



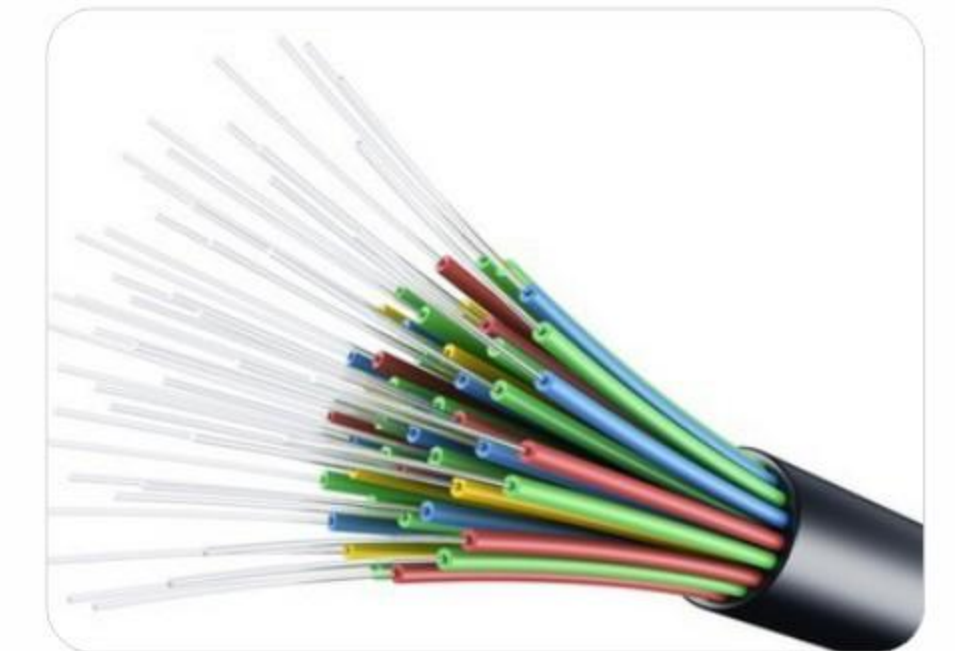
纺织品复合型行业
Textile Composite Industry



家用电器业
Household Electric Appliance Industry



汽车零部件行业
Auto Parts Industry



通讯光缆行业
Fibre-optic Cable Industry



家具软垫行业
Furniture Upholstery Industry



家装建材行业
Home Furnishing & Building Materials Industry



书刊印刷行业
Book Printing Industry