

NT91L(50A)



32.4×27.5×20(28.5)



Features

- Single and double coils magnet latching relay available.
- Switching capacity up to 50A.
- Energy saving and enviromental friendly product.

Ordering Information

NT91L 50 C S 12 - 1.5 D L
 1 2 3 4 5 6 7 8

- | | |
|--|---|
| 1 Part number: NT91L 2 Load: 50A/277VAC; Resistive load; 3000W 240VACJIncandescent Lamp; 16A/280VAC; Electronic ballast; 5HP 250VAC; Motor load; | 3 Contact arrangement: A:1A; 1B:1B; C:1C 4 Enclosure: S: Wash tight; E: Flux proof 5 Coil rated voltage(V): 5,12,24,48 6 Coil power: 1.5:1.5W 7 Coil: NIL:Single coil; D: Double coils 8 High: H:Standard; L: Low profile type |
|--|---|

Contact Data

| | | | |
|---------------------------|--|----------------------------|--------------------------|
| Contact Arrangement | 1A(SPSTNO) 1B(SPSTNC) 1C(SPDT(B-M)) | | |
| Contact Material | AgSnO ₂ | | |
| Contact Rating(Resistive) | 50A/277VAC Incandescent Lamp:3000W 240VAC Electronic Ballast:16A/280VAC Motor Load:5HP 250VAC | | |
| Max. Switching Power | 14000VA | | |
| Max. Switching Voltage | 440VAC | Max. Switching Current:50A | |
| Contact Resistance | ≤20mΩ | Item 4.12 of IEC 61810-7 | |
| Operation Life | Electrical | 5×10 ⁴ | Item 4.30 of IEC 61810-7 |
| | Mechanical | 1×10 ⁶ | Item 4.31 of IEC 61810-7 |

Coil Parameter

| 1 Coil | | | | | | | | |
|--------------|-------------------|-------------------------|---|-----------------------------|------------------|--------------|-------------|---------------|
| Dash numbers | Rated voltage VDC | Coil resistance Ω ± 10% | Set/Reset voltage VDC (80%of rated voltage) | Operating voltage range VDC | Plus duration ms | Coil power W | Set time ms | Reset time ms |
| 005-1500 | 5 | 16.7 | 4 | 5~6 | ≥50 | 1.5 | ≤15 | ≤15 |
| 012-1500 | 12 | 96 | 9.6 | 12~14.4 | | | | |
| 024-1500 | 24 | 384 | 19.2 | 24~28.8 | | | | |
| 048-1500 | 48 | 1536 | 38.4 | 48~57.6 | | | | |

NT91L(50A)

| 2 Coils | | | | | | | | |
|--------------|-------------------|-----------------------------------|--|-----------------------------|------------------|--------------|-------------|---------------|
| Dash numbers | Rated voltage VDC | Coil resistance $\Omega \pm 10\%$ | Set/Reset voltage VDC (80% of rated voltage) | Operating voltage range VDC | Plus duration ms | Coil power W | Set time ms | Reset time ms |
| 005-3000 | 5 | 2×8.3 | 4 | 5~6 | ≥50 | 2×3.0 | ≤15 | ≤15 |
| 012-3000 | 12 | 2×48 | 9.6 | 12~14.4 | | | | |
| 024-3000 | 24 | 2×192 | 19.2 | 24~28.8 | | | | |
| 048-3000 | 48 | 2×768 | 38.4 | 48~57.6 | | | | |

CAUTION: 1. When latching relays are installed in equipment, the latch and reset coil should not be powered simultaneously. Coil should not be pulsed with less than the nominal coil voltage and pulse width should be a minimum of three times the specified operate time of the relay. If these conditions are not followed, it is possible for the relay to be in the magnetically neutral position .
2. Switching voltage is for test purpose only and are no to be used as design criteria.

Safety Approvals

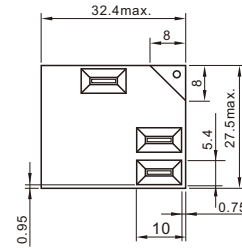
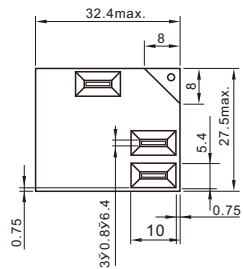
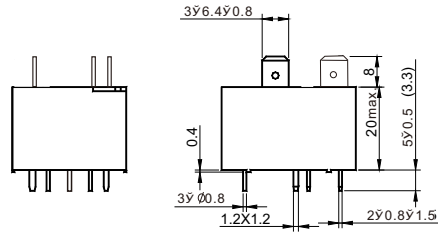
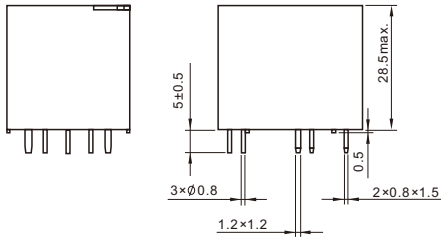
| | |
|-----------------|------------|
| Safety approval | UL&CUR |
| Load | 50A/277VAC |

Characteristics

| | | |
|---|------------------------------------|--|
| Insulation Resistance | 1000M Ω min (at 500VDC) | Item 4.11 of IEC 61810-7 |
| Dielectric Strength Between Contacts Between Contact and Coil | 50Hz 1500V 1min 50Hz 2500V 1min | Item 4.9 of IEC 61810-7 Item 4.9 of IEC 61810-7 |
| Shock Resistance | 196m/s ² 11ms | Item 4.26 of IEC 61810-7 |
| Vibration Resistance | 10Hz~55Hz Double amplitude 1.5mm | Item 4.28 of IEC 61810-7 |
| Terminals Strength | 10N | Item 4.24 of IEC 61810-7 |
| Ambient Temperature | -40℃~85℃ | |
| Relative Humidity | 5% to 85% | Item 4.16 of IEC 61810-7 |
| Mass | 31g (Low Profile Type) 35g | Item 4.7 of IEC 61810-7 |

Dimensions

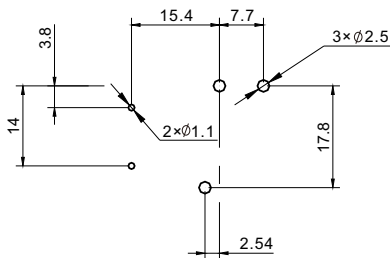
mm



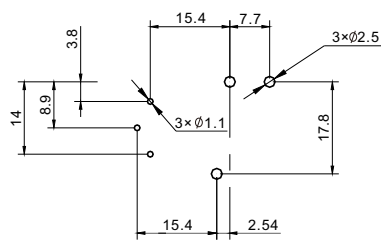
NT91L

NT91LL

Dimensions

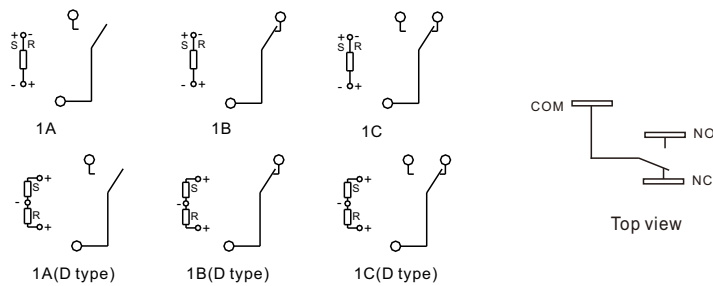


Single coil



Double coils

Mounting (Bottom view)



S:Set R:Reset

Wiring diagram(Bottom view)

- CAUTION: 1. Relays shall have plus(+) signs or "+" and "-" placed on the circuit diagram as shown.
 2. In case of no tolerance shown in outline dimension: outline dimension ≤ 1 mm, tolerance should be ± 0.2 mm ;
 outline dimension > 1 mm and ≤ 5 mm, tolerance should be ± 0.3 mm; outline dimension > 5 mm, tolerance should be ± 0.4 mm.