

RISEFULL 莱孚®

只需好用 EXCELLENCE IN USE



微信公众号



福建泉昇水泵有限公司
FUJIAN RISEFULL PUMP CO.,LTD.

地址:福建省福安市罗江工业路89号

Add: No.89 Luojiang Industrial Road, Fu'an, Fujian, China

邮编/P.C.:355001

电话/Tel:0086-593-6318005/6318007 传真/Fax:0086-593-6318009

E-mail: info@risefull.com

www.risefull.com

工业配套水泵

INDUSTRIAL PUMP

高效可靠的标准化产品
Efficient And Reliable Premium Products



CE ISO9001:2015

福建泉昇水泵有限公司
FUJIAN RISEFULL PUMP CO.,LTD.

目录 INDEX

工业配套水泵产品
Industrial Pump Products



-  **06** | CN 离心泵
CN Centrifugal Pump
-  **10** | CNG 离心泵
CNG Centrifugal Pump
-  **14** | CM 离心泵
CM Centrifugal Pump
-  **18** | CF 离心泵
CF Centrifugal Pump
-  **22** | CFG 离心泵
CFG Centrifugal Pump
-  **26** | PN 漩涡泵
PN Peripheral Pump

-  **30** | PNS/PFS 漩涡泵
PNS/PFS Peripheral Pump
-  **34** | PS 自吸漩涡泵
PS Self-priming Peripheral Pump
-  **38** | PH 高温油泵
PH High Temperature Oil Pump
-  **42** | J 自吸喷射泵
J Self-priming Jet Pump
-  **46** | GD 立式管道泵
GD In Line Pump
-  **52** | PC31 三合一智能水泵控制器
PC31 3in1 Pump Controller

创建于
Since **2004**

专注水泵从未止步！
Focus On Water Pumps
Never Stop!



公司简介 COMPANY PROFILE

福建泉昇水泵有限公司成立于 2004 年，是一家集自主研发、设计、生产、销售和服务成一体专注水泵制造商。公司积累了丰富的专业水泵制造经验，现已颇具规模，年产量达 30 万台，拥有厂房面积 4800 平方米，在职员工 100 多人。

FUJIAN RISEFULL PUMP CO., LTD established in 2004 is a innovative pump supplier which focus on independent research and development, designing production, selling and service.

With abundant professional experience, Risefull is with an annual output of 300,000 units, a plant area of 4800 square meter and more than 100 employees .



公司已通过 ISO9001 质量体系认证，产品获得 CE 权威认证，并获得多项产品外观及实用专利证书，同时积累了丰厚的技术基础。

Risefull has passed ISO9001 quality management system, obtained the CE certification and several appearance & practicle-new-type patent, rolled up rich technical basis .

制造工艺

MANUFACTURING PROCESSES



公司拥有先进的生产和测试设备，如自动绕嵌设备、钻攻一体机、精密数控车床、喷塑涂装线、液体泡沫机、电气安全检测台、水泵型式实验台等。

Risefull has owned advanced production and testing machine, such as automatic winding machine, drill-tap machine, precision CNC machine, powder coating line, quick pack machine, electrical safety testing machine and performance testing bench.



生产品控

QUALITY CONTROL

依据 ISO9001 质量管理体系要求，借助 ERP 信息管理系统运行严格实施来料检验、过程检验、出厂测试的品保措施。

According to the requirements of ISO9001 quality management system, with the help of ERP information management system, strictly implement the incoming quality control, input process quality control, final quality control to ensure the quality .





工业循环
Industrial



热水工程
HVAC



设备配套
Equipment



农业灌溉
Irrigation



家庭使用
Household

CN

离心泵
Centrifugal Pump



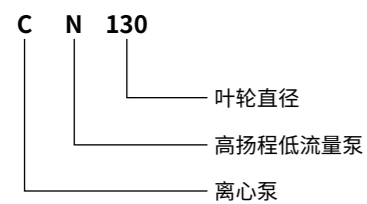
工作条件

- 可用于抽取、输送清水或类似水的液体
- 流体温度: 0°C ~90°C
- 环境温度: < 40°C
- 最大承压值: 10 bar
- 可连续 24 小时不间断工作
- 绝缘等级: B 级
- 防护等级: IP44

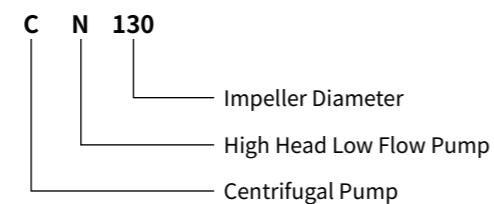
Working Conditions

- Clean liquids without suspended solids, non-aggressive
- Liquid temperature: 0°C ~90°C
- Ambient temperature: < 40°C
- Maximum pressure: 10 bar
- Continuous service S1
- Insulation: B
- Protection: IP44

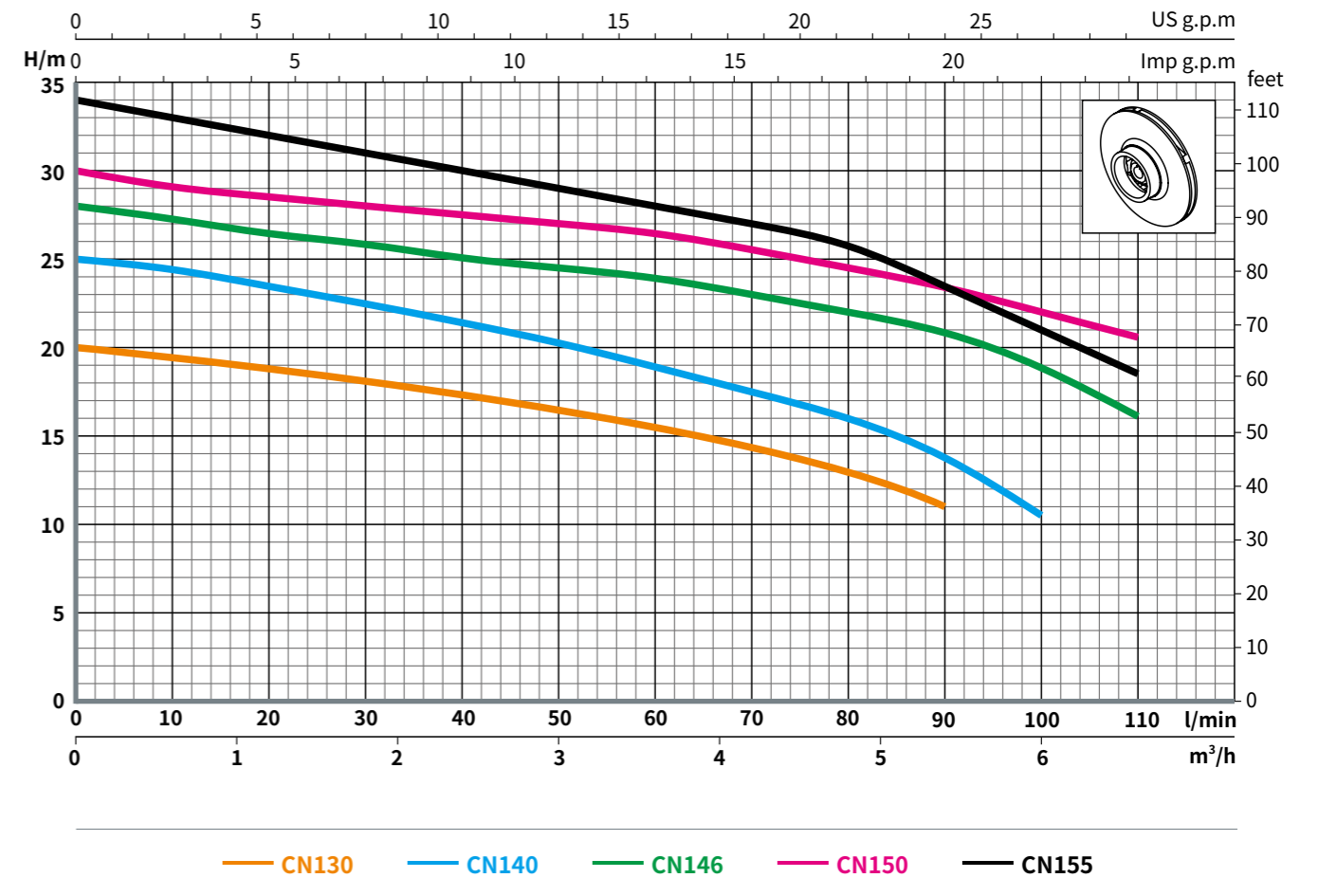
型号定义



Model Definition



性能曲线图 Performance Curve (n=2850 r/min)

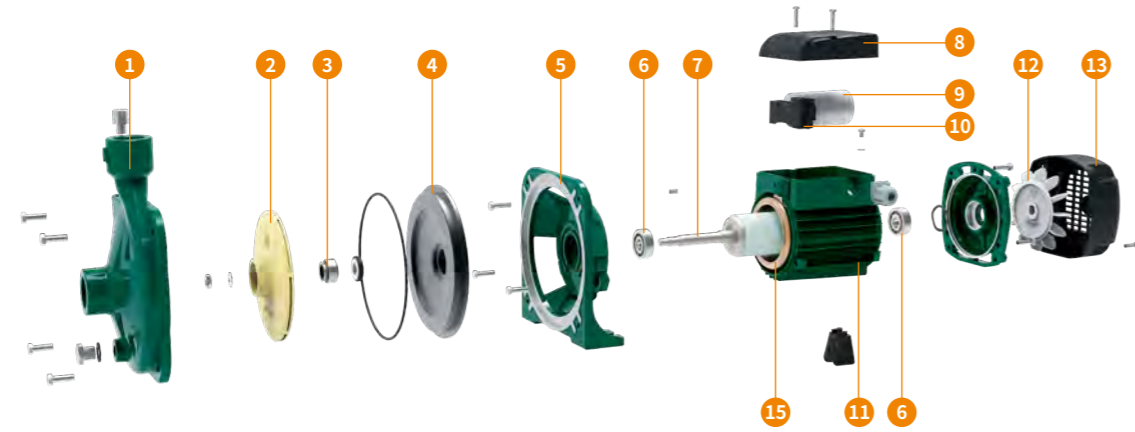


技术参数 Performance Data

型号 Model	功率 Power		Q	m³/h												
	单相 Single-phase	三相 Three-phase		0	0.6	1.2	1.8	2.4	3.0	3.6	4.2	4.8	5.4	6.0	6.6	
		kW	HP	l/min	0	10	20	30	40	50	60	70	80	90	100	110
CN130	CN130T	0.37	0.5	H	20	19.5	19	18	17.5	16.5	*15.5	*14.5	*13	11		
CN140	CN140T	0.5	0.65		25	24.5	23.5	22.5	21.5	*20.5	*19	*17.5	16	14	10.5	
CN146	CN146T	0.55	0.75		28	27.5	26.5	26	25	24.5	24	23	*22	*21	*19	16
CN150	CN150T	0.75	1		30	29	28.5	28	27.5	27	26.5	*25.5	*24.5	*23.5	*22	20.5
CN155	CN155T	1	1.3		34	33	32	31	30	29	28	*27	*26	*23.5	*21	18.5

*: 水泵高效工作区间
*: High Efficiency Eta Of Pump

零部件分解图 Exploded View Of Main Component

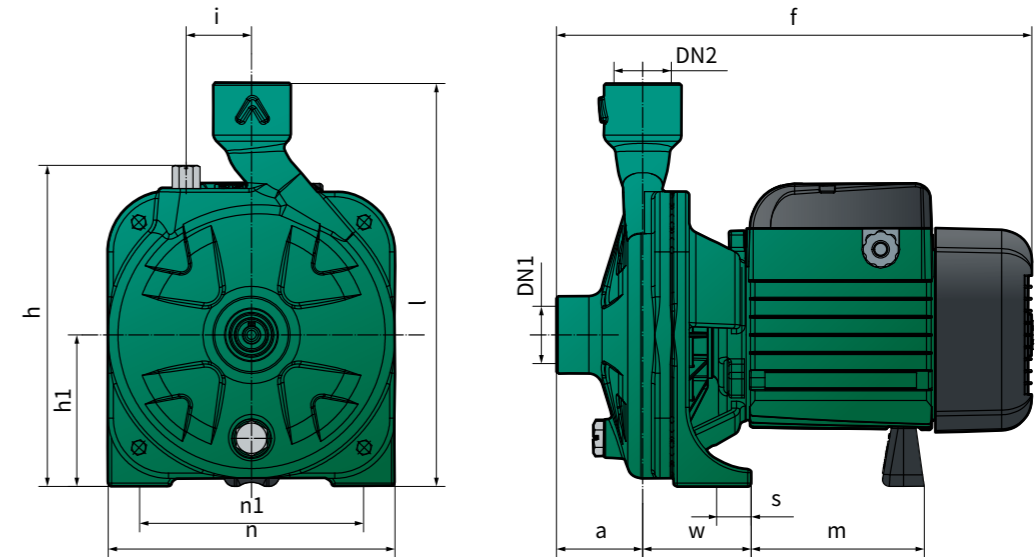


主零部件清单 List Of Main Component

● 标准配置 Standard Configuration ○ 可选择配置 Optional Configuration

序号 No.	零件名称 Component	规格 / 材质 / 结构说明 Specification/Construction Characteristics
1	泵体 Pump Body	灰铸铁 HT200, 电泳防锈处理 (耐盐雾试验 300 小时 +) Cast Iron HT200, Electro-coating Finished (Salt Spray Resistant Test For 300+ Hours)
2	叶轮 Impeller	● 铜叶轮 (含量 58%+) ○ PPO 叶轮 (高等级耐温 150°C) ○ 不锈钢叶轮 (SUS304 冲压焊接) ● Brass(H58%+) ○ PPO (High Temperature Resistant for 150°C) ○ Stainless Steel (SUS304 Stamping & Welding)
3	机械密封 Mechanical Seal	● 301 款 (压制石墨 + 陶瓷) ○ CN 款 (压制石墨 + 陶瓷, 特殊结构满足频繁启停工况) ○ 14DIN 款 (呋喃浸渍石墨 + 碳化硅静环, 设计寿命 25000 小时) ● 301 Type(Karbate Impervious Graphite+Ceramic) ○ CN Type(Karbate Impervious Graphite+Ceramic, Special Construction Stand For Start-stop Frequently) ○ 14DIN Type(Furan Impregnation Graphite+SIC, Use Life 25,000+ Hours)
4	前盖盘 Bracket Plate	● 灰铸铁 HT200, 电泳防锈处理 (耐盐雾试验 300 小时 +) ○ PPO 前盖盘 (高等级耐温 150°C) ● Cast Iron HT200, Electro-coating Finished (Salt Spray Resistant Test For 300+ Hours) ○ PPO (High Temperature Resistant For 150°C)
5	前盖 Bracket	灰铸铁 HT200 Cast Iron HT200
6	轴承 Ball Bearings	● 标准型 ○ 人本 ○ 台湾东培 ● Standard Type ○ C&U ○ TPI(Taiwan)
7	转子轴 Motor Shaft	焊接转子轴: 304 不锈钢 (水泵端) + 碳钢 (电机端) Welding Shaft: Stainless Steel 304 (Pump Side)+Carbon Steel (Motor Side)
8	接线盒 Terminal Box	ABS 塑料 Plastic ABS
9	电容器 Capacitor	● CBB60 塑壳电容 ○ CBB65 防爆电容 ○ 450VL@220-240V 电机 ○ 300VL@110-127V 电机 CBB60 ● CBB60 Plastic Shell Capacitor ○ CBB65 Explosion-proof Capacitor ○ 450VL@220-240V Motor ○ 300VL@110-127V Motor
10	接线柱 Terminal Board	阻燃 PBT Flame Retarding PBT
11	机壳 Motor Housing	铝压铸 ADC12 合金铝 Aluminum ADC12
12	风叶 Fan	● PP 塑料 ○ 尼龙塑料 ● Plastic PP ○ Nylon PA6
13	风罩 Fan Cover	PP 塑料 Plastic PP
14	插头线 Plug Cord	● 国标三扁插 ○ 定制插头线 ○ 三芯测试线 ● 3 Core Testing Cable ○ Customized Cable Plug
15	电机 Motor	● 标准铜线电机 ○ 高效电机 ○ 经济版电机 ○ 三相电机 ○ 定制 60 赫兹电机 ● Standard Copper Wire ○ High Efficiency Motor ○ Economical Motor ○ 3-Phase Motor ○ Customized 60 HZ Motor

安装尺寸 Installation Dimensions



型号 Model	DN1	DN2	主要安装尺寸 Main Installation Dimensions(mm)										
			a	f	h	h1	i	l	m	n	n1	w	s
CN130	G1	G1	50	276	187	88	38	234	101	167	130	63	20
CN140	G1	G1	54	297	193	93	38	239	112	170	128	62	18
CN146	G1	G1	54	302	220	101	41	262	111	187	150	63	20
CN150	G1	G1	54	302	220	101	41	262	111	187	150	63	20
CN155	G1	G1	53	302	225	102	41	274	112	197	160	63	20

工作电流 Working Current

型号 Model	1~220V/50Hz	3~380V/50Hz
CN130	3A	1.2A
CN140	5A	1.8A
CN146	5.4A	1.9A
CN150	5.7A	2A
CN155	7A	2.4A

包装箱信息 Packaging Information

型号 Model	净重 N.W (kg)	台数 / 箱 PCS/CTN	毛重 / 箱 G.W./CTN (kg)	尺寸 MEAS (cm)
CN130	8.90	1	9.30	30.5X18X26
CN140	11.75	1	12.25	32.5X22X29.5
CN146	13.35	1	14.05	32.5X22X29.5
CN150	13.70	1	14.30	32.5X22X29.5
CN155	15.30	1	16.05	32.5X22X29.5



工业循环
Industrial



热水工程
HVAC



设备配套
Equipment



农业灌溉
Irrigation



家庭使用
Household



CNG

离心泵
Centrifugal Pump

CNG130

CNG100



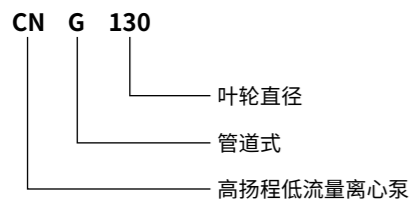
工作条件

- 可用于抽取、输送清水或类似水的液体
- 流体温度: 0°C ~90°C
- 环境温度: < 40°C
- 最大承压值: 10 bar
- 可连续 24 小时不间断工作
- 绝缘等级: B 级
- 防护等级: IP44

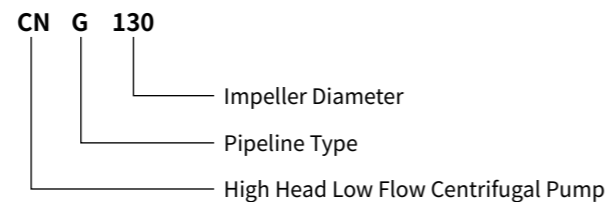
Working Conditions

- Clean liquids without suspended solids, non-aggressive
- Liquid temperature: 0°C ~90°C
- Ambient temperature: < 40°C
- Maximum pressure: 10 bar
- Continuous service S1
- Insulation: B
- Protection: IP44

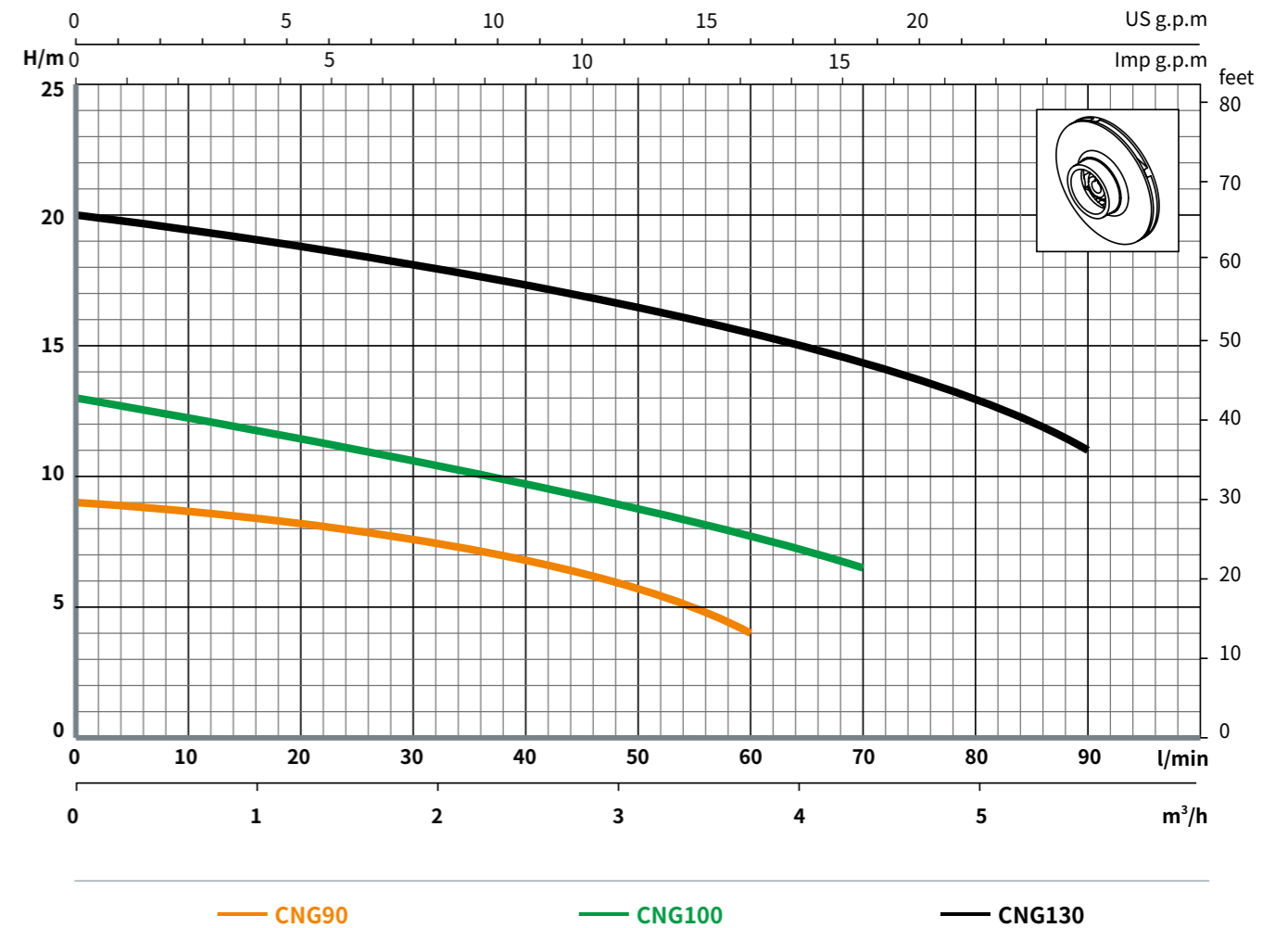
型号定义



Model Definition



性能曲线图 Performance Curve (n=2850 r/min)

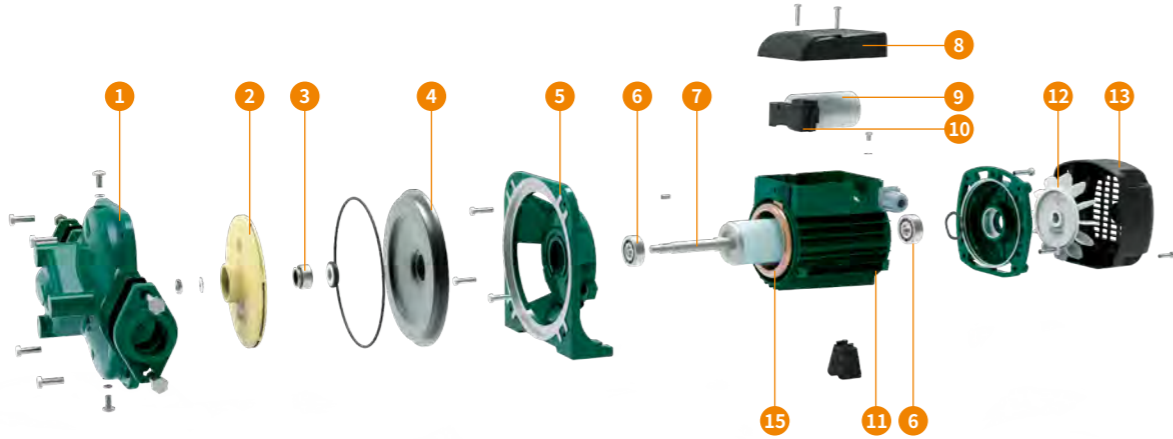


技术参数 Performance Data

型号 Model	功率 Power		Q	m³/h										
	单相 Single-phase	三相 Three-phase		0	0.6	1.2	1.8	2.4	3.0	3.6	4.2	4.8	5.4	
				l/min										
				0	10	20	30	40	50	60	70	80	90	
CNG90	CNG90T	0.2 0.27		9	8.5	8	*7.5	*7	*6	4				
CNG100	CNG100T	0.3 0.4	H m	13	12	11.5	*11	*10	*9	*7.5	6.5			
CNG130	CNG130T	0.37 0.5		20	19.5	19	18	17.5	16.5	*15.5	*14.5	*13	11	

*: 水泵高效工作区间
*: High Efficiency Eta Of Pump

零部件分解图 Exploded View Of Main Component

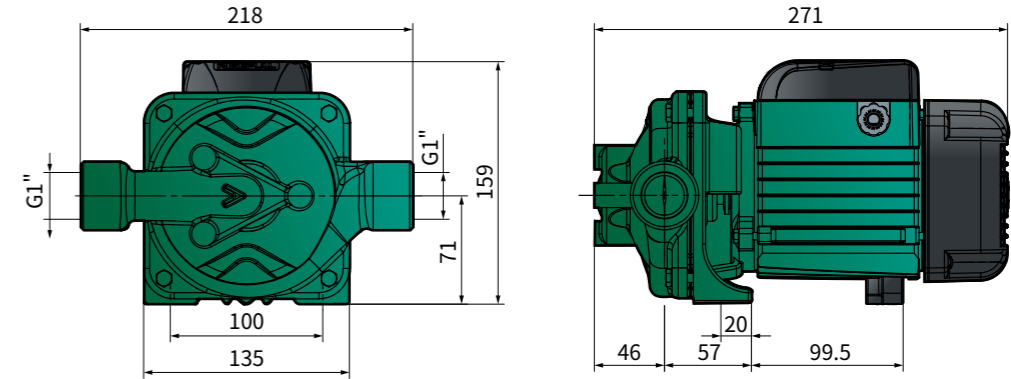


主零部件清单 List Of Main Component

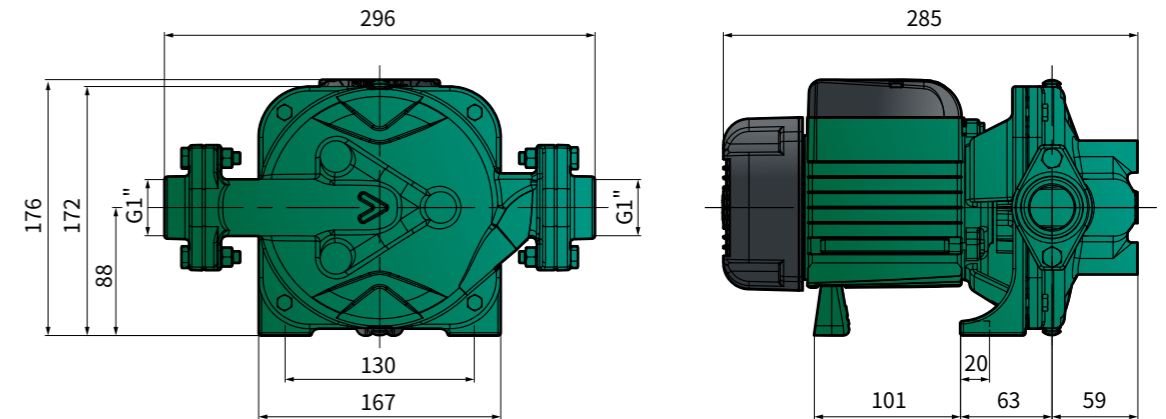
● 标准配置 Standard Configuration ○ 可选择配置 Optional Configuration

序号 No.	零件名称 Component	规格 / 材质 / 结构说明 Specification/Construction Characteristics
1	泵体 Pump Body	灰铸铁 HT200, 电泳防锈处理 (耐盐雾试验 300 小时 +) Cast Iron HT200, Electro-coating Finished (Salt Spray Resistant Test For 300+ Hours)
2	叶轮 Impeller	● 铜叶轮 (含量 58%+) ○ PPO 叶轮 (高等级耐温 150°C) ○ 不锈钢叶轮 (SUS304 冲压焊接) ● Brass (H58%+) ○ PPO (High Temperature Resistant for 150°C) ○ Stainless Steel (SUS304 Stamping & Welding)
3	机械密封 Mechanical Seal	○ 301 款 (压制石墨 + 陶瓷) ○ CN 款 (压制石墨 + 陶瓷, 特殊结构满足频繁启停工况) ● 14DIN 款 (呋喃浸渍石墨 + 碳化硅静环, 设计寿命 25000 小时) ○ 301 Type (Karbate Impervious Graphite+Ceramic) ○ CN Type (Karbate Impervious Graphite+Ceramic, Special Construction Stand For Start-stop Frequently) ● 14DIN Type (Furan Impregnation Graphite+SIC, Use Life 25,000+ Hours)
4	前盖盘 Bracket Plate	● 灰铸铁 HT200, 电泳防锈处理 (耐盐雾试验 300 小时 +) ○ PPO 前盖盘 (高等级耐温 150°C) ● Cast Iron HT200, Electro-coating Finished (Salt Spray Resistant Test For 300+ Hours) ○ PPO (High Temperature Resistant For 150°C)
5	前盖 Bracket	灰铸铁 HT200 Cast Iron HT200
6	轴承 Ball Bearings	○ 标准型 ○ 人本 ● 台湾东培 ○ Standard Type ○ C&U ● TPI(Taiwan)
7	转子轴 Motor Shaft	焊接转子轴: 304 不锈钢 (水泵端) + 碳钢 (电机端) Welding Shaft: Stainless Steel 304 (Pump Side)+Carbon Steel (Motor Side)
8	接线盒 Terminal Box	ABS 塑料 Plastic ABS
9	电容器 Capacitor	● CBB60 塑壳电容 ○ CBB65 防爆电容 ○ 450VL@220-240V 电机 ○ 300VL@110-127V 电机 ● CBB60 Plastic Shell Capacitor ○ CBB65 Explosion-proof Capacitor ○ 450VL@220-240V Motor ○ 300VL@110-127V Motor
10	接线柱 Terminal Board	阻燃 PBT Flame Retarding PBT
11	机壳 Motor Housing	铝压铸 ADC12 合金铝 Aluminum ADC12
12	风叶 Fan	○ PP 塑料 ● 尼龙塑料 ○ Plastic PP ● Nylon PA6
13	风罩 Fan Cover	PP 塑料 Plastic PP
14	插头线 Plug Cord	● 国标三扁插 ○ 定制插头线 ○ 三芯测试线 ● 3 Core Testing Cable ○ Customized Cable Plug
15	电机 Motor	○ 标准铜线电机 ● 高效电机 ○ 经济版电机 ○ 三相电机 ○ 定制 60 赫兹电机 ○ Standard Copper Wire ● High Efficiency Motor ○ Economical Motor ○ 3-Phase Motor ○ Customized 60 HZ Motor

安装尺寸 Installation Dimensions



CNG90/100



CNG130

工作电流 Working Current

型号 Model	1~220V/50Hz	3~380V/50Hz
CNG90	1.2A	0.5A
CNG100	1.6A	0.8A
CNG130	3A	1.2A

包装箱信息 Packaging Information

型号 Model	净重 N.W (kg)	台数 / 箱 PCS/CTN	毛重 / 箱 G.W./CTN (kg)	尺寸 MEAS (cm)
CNG90	7.30	1	7.80	31x25X21.5
CNG100	7.70	1	8.20	31x25X21.5
CNG130	11.30	1	11.70	31x25X21.5



工业循环
Industrial



热水工程
HVAC



设备配套
Equipment



农业灌溉
Irrigation



家庭使用
Household

CM

离心泵 Centrifugal Pump



工作条件

- 可用于抽取、输送清水或类似水的液体
- 流体温度: 0°C ~90°C
- 环境温度: < 40°C
- 最大承压值: 10 bar
- 可连续 24 小时不间断工作
- 绝缘等级: B 级
- 防护等级: IP44

Working Conditions

- Clean liquids without suspended solids, non-aggressive
- Liquid temperature: 0°C ~90°C
- Ambient temperature: < 40°C
- Maximum pressure: 10 bar
- Continuous service S1
- Insulation: B
- Protection: IP44

型号定义

40 CM 125

—— 叶轮直径

—— 中扬程中流量离心泵

—— 口径 1.5 寸

Model Definition

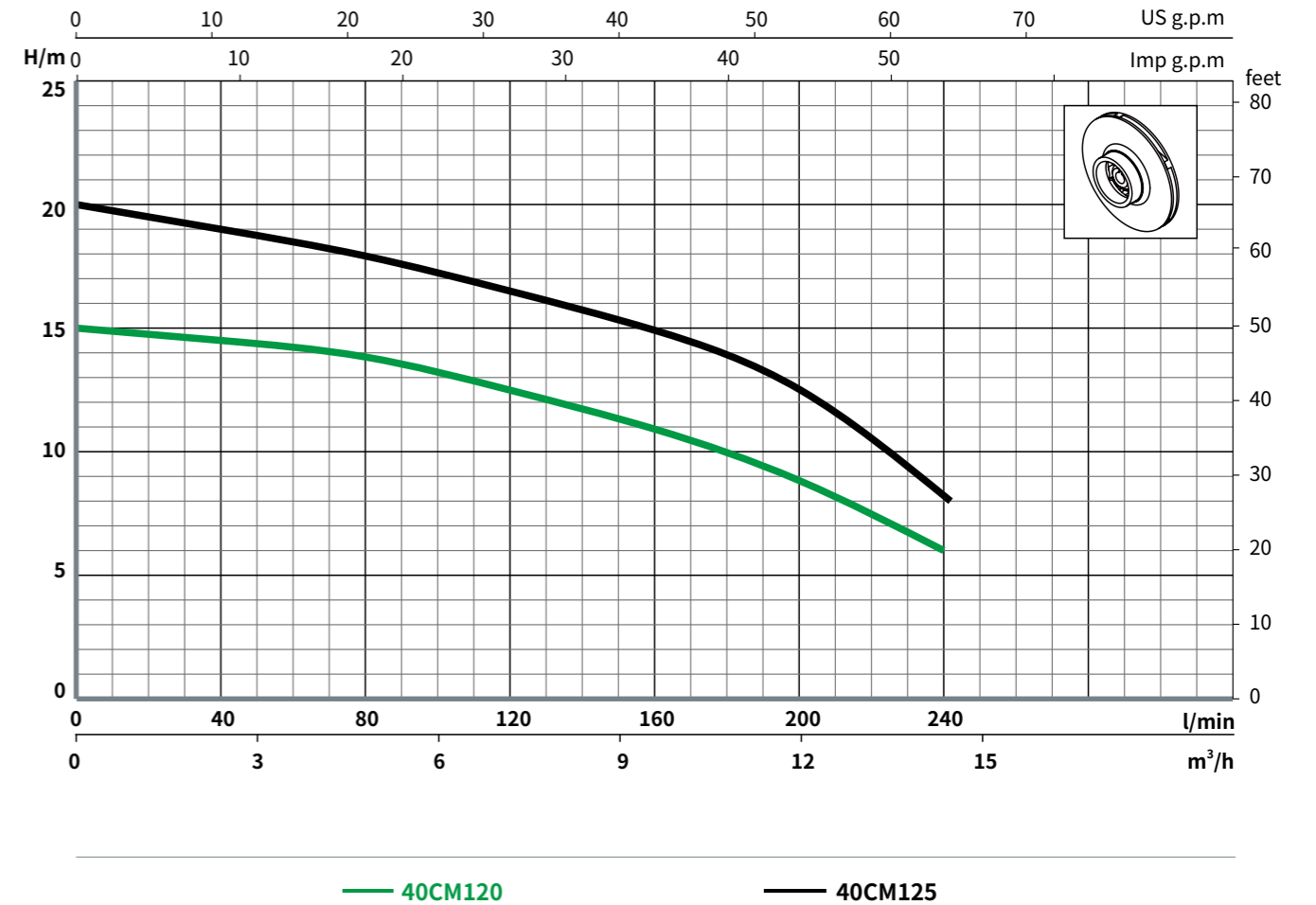
40 CM 125

—— Impeller Diameter

—— Centrifugal Pump With Middle Head & Flow

—— Inlet/Outlet G1.5"

性能曲线图 Performance Curve (n=2850 r/min)

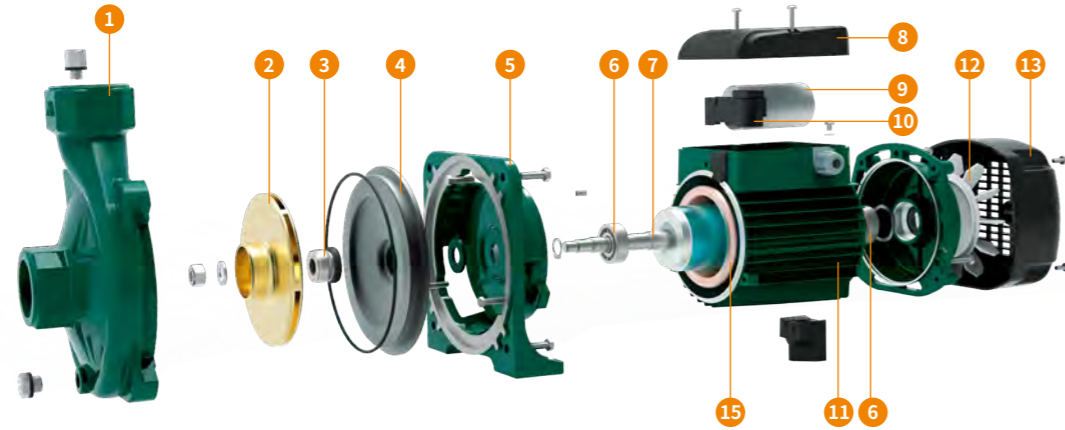


技术参数 Performance Data

型号 Model		功率 Power		Q	m³/h						
单相 Single-phase	三相 Three-phase	kW	HP		0.0	2.4	4.8	7.2	9.6	12.0	14.5
					l/min						
					0	40	80	120	160	200	240
40CM120	40CM120T	0.55	0.75	H	15	14.5	14	*12.5	*11	*9	6
40CM125	40CM125T	0.75	1		m	20	19	18	*16.5	*15	*13

*: 水泵高效工作区间
*: High Efficiency Eta Of Pump

零部件分解图 Exploded View Of Main Component

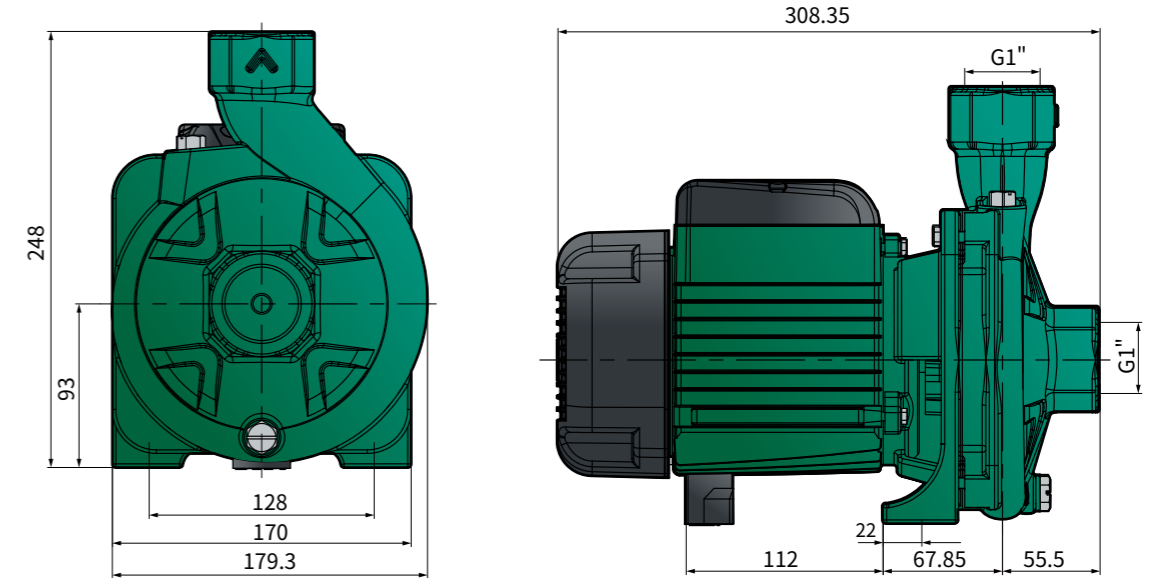


主零部件清单 List Of Main Component

● 标准配置 Standard Configuration ○ 可选择配置 Optional Configuration

序号 No.	零件名称 Component	规格 / 材质 / 结构说明 Specification/Construction Characteristics
1	泵体 Pump Body	灰铸铁 HT200, 电泳防锈处理 (耐盐雾试验 300 小时 +) Cast Iron HT200, Electro-coating Finished (Salt Spray Resistant Test For 300+ Hours)
2	叶轮 Impeller	● 铜叶轮 (含量 58%+) ○ 不锈钢叶轮 (SUS304 冲压焊接) ● Brass (H58%+) ○ Stainless Steel (SUS304 Stamping & Welding)
3	机械密封 Mechanical Seal	○ 301 款 (压制石墨 + 陶瓷) ○ CN 款 (压制石墨 + 陶瓷, 特殊结构满足频繁启停工况) ● 14DIN 款 (呋喃浸渍石墨 + 碳化硅静环, 设计寿命 25000 小时) ○ 301 Type (Karbate Impervious Graphite+Ceramic) ○ CN Type (Karbate Impervious Graphite+Ceramic, Special Construction Stand For Start-stop Frequently) ● 14DIN Type (Furan Impregnation Graphite+SIC, Use Life 25,000+ Hours)
4	前盖盘 Bracket Plate	灰铸铁 HT200, 电泳防锈处理 (耐盐雾试验 300 小时 +) Cast Iron HT200, Electro-coating Finished (Salt Spray Resistant Test For 300+ Hours)
5	前盖 Bracket	灰铸铁 HT200 Cast Iron HT200
6	轴承 Ball Bearings	○ 标准型 ○ 人本 ● 台湾东培 ○ Standard Type ○ C&U ● TPI(Taiwan)
7	转子轴 Motor Shaft	焊接转子轴: 304 不锈钢 (水泵端) + 碳钢 (电机端) Welding Shaft: Stainless Steel 304 (Pump Side)+Carbon Steel (Motor Side)
8	接线盒 Terminal Box	ABS 塑料 Plastic ABS
9	电容器 Capacitor	● CBB60 塑壳电容 ○ CBB65 防爆电容 ○ 450VL@220-240V 电机 ○ 300VL@110-127V 电机 ● CBB60 Plastic Shell Capacitor ○ CBB65 Explosion-proof Capacitor ○ 450VL@220-240V Motor ○ 300VL@110-127V Motor
10	接线柱 Terminal Board	阻燃 PBT Flame Retarding PBT
11	机壳 Motor Housing	铝压铸 ADC12 合金铝 Aluminum ADC12
12	风叶 Fan	○ PP 塑料 ● 尼龙塑料 ○ Plastic PP ● Nylon PA6
13	风罩 Fan Cover	PP 塑料 Plastic PP
14	插头线 Plug Cord	● 国标三扁插 ○ 定制插头线 ○ 三芯测试线 ● 3 Core Testing Cable ○ Customized Cable Plug
15	电机 Motor	○ 标准铜线电机 ● 高效电机 ○ 经济版电机 ○ 三相电机 ○ 定制 60 赫兹电机 ○ Standard Copper Wire ● High Efficiency Motor ○ Economical Motor ○ 3-Phase Motor ○ Customized 60 HZ Motor

安装尺寸 Installation Dimensions



工作电流 Working Current

型号 Model	1~220V/50Hz	3~380V/50Hz
40CM120	3.8A	1.5A
40CM125	5.1A	2A

包装箱信息 Packaging Information

型号 Model	净重 N.W (kg)	台数 / 箱 PCS/CTN	毛重 / 箱 G.W./CTN (kg)	尺寸 MEAS (cm)
40CM120	14.00	1	14.30	32.5X22X29.5
40CM125	14.30	1	14.60	32.5X22X29.5



工业循环
Industrial



热水工程
HVAC



设备配套
Equipment



农业灌溉
Irrigation



家庭使用
Household



CF

离心泵
Centrifugal Pump

80CF2200

50CF750



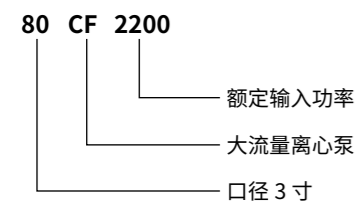
工作条件

- 可用于抽取、输送清水或类似水的液体
- 流体温度: 0°C ~50°C
- 环境温度: < 40°C
- 最大承压值: 10 bar
- 可连续 24 小时不间断工作
- 绝缘等级: B 级
- 防护等级: IP44

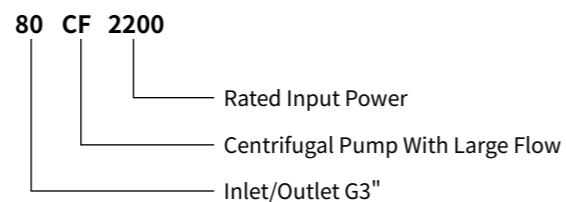
Working Conditions

- Clean liquids without suspended solids, non-aggressive
- Liquid temperature: 0°C ~50°C
- Ambient temperature: < 40°C
- Maximum pressure: 10 bar
- Continuous service S1
- Insulation: B
- Protection: IP44

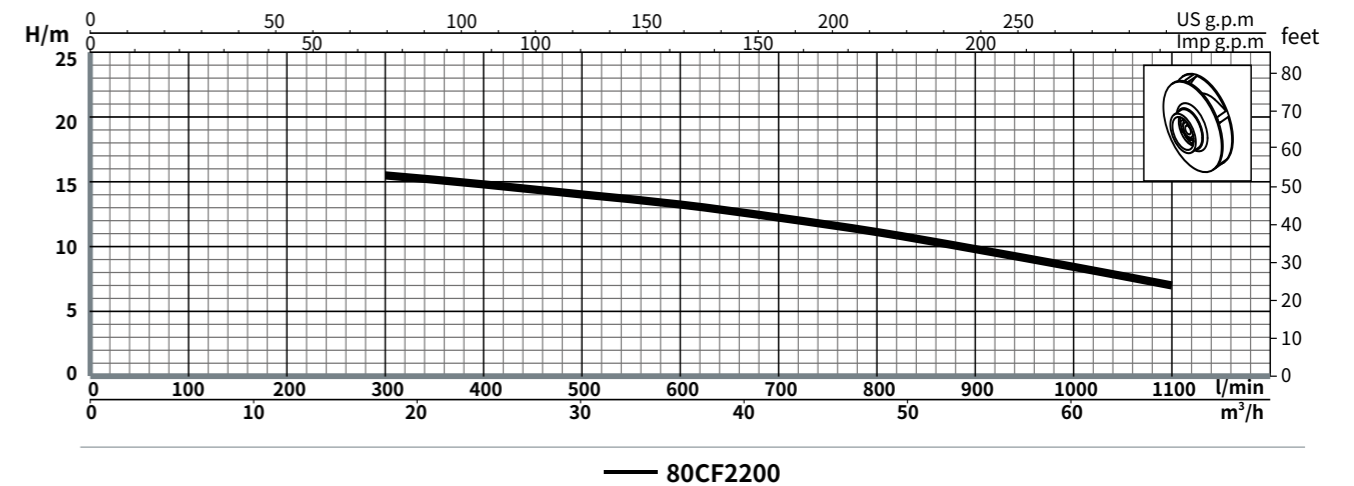
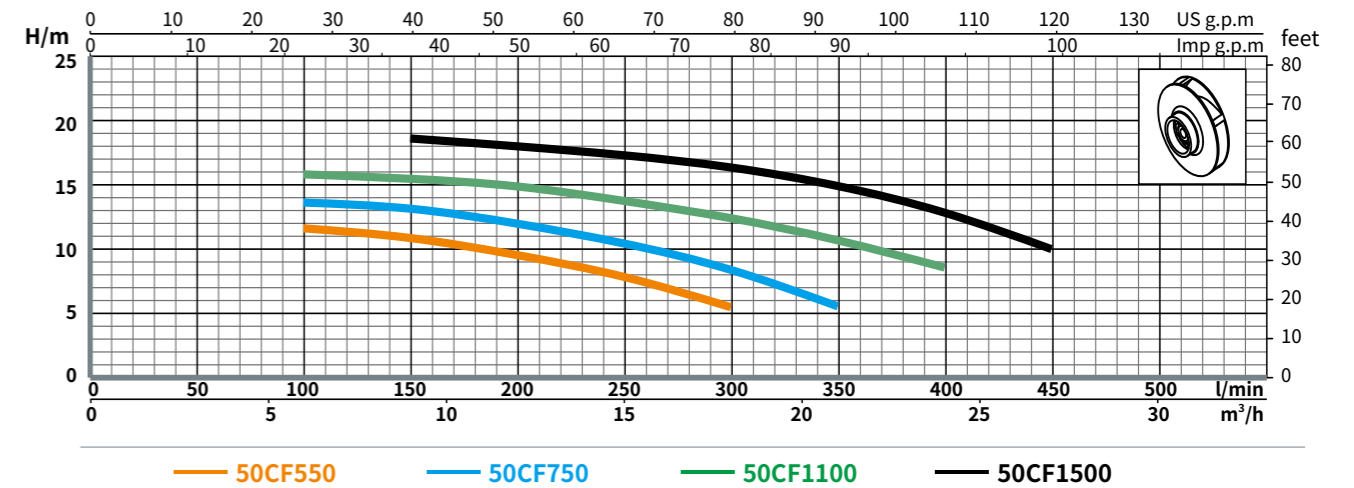
型号定义



Model Definition



性能曲线图 Performance Curve (n=2850 r/min)



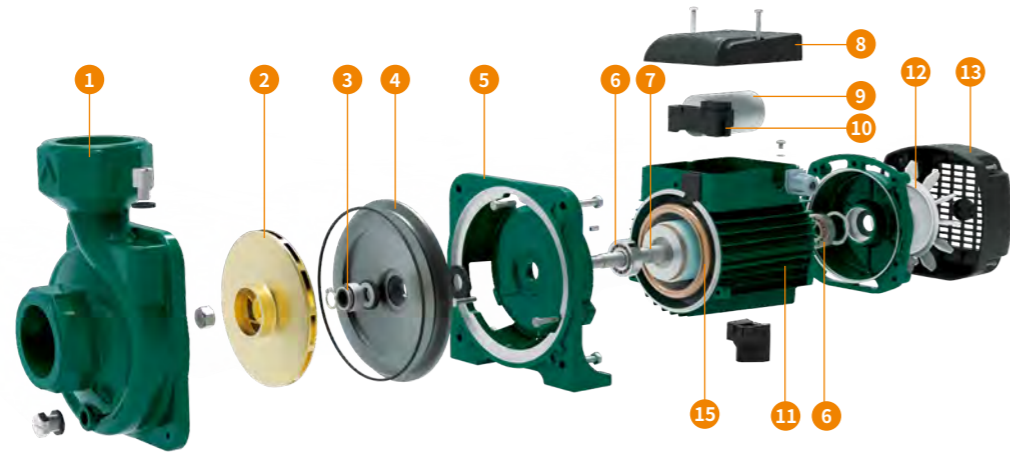
技术参数 Performance Data

型号 Model		功率 Power		Q	m³/h												
单相 Single-phase	三相 Three-phase	kW	HP		0	3.0	6.0	9.0	12.0	15.1	18.1	21.1	24.1	27.1			
					l/min												
					0	50	100	150	200	250	300	350	400	450			
50CF550	50CF550T	0.55	0.75	H	12	-	11.5	11	*9.6	*8	5.6						
50CF750	50CF750T	0.75	1		14	-	13.6	13.2	*12	*10.5	8.5	5.5					
50CF1100	50CF1100T	1.1	1.5		16	-	15.8	15.5	15	*13.8	*12.5	*10.7	8.5				
50CF1500	50CF1500T	1.5	2		19	-	-	18.5	18	*17.5	*16.5	*15	13	10			

型号 Model		功率 Power		Q	m³/h												
单相 Single-phase	三相 Three-phase	kW	HP		0	6.0	12.0	18.1	24.1	30.1	36.1	42.2	48.2	54.2	60.2	66.3	
					l/min												
					0	100	200	300	400	500	600	700	800	900	1000	1100	
80CF2200	80CF2200T	2.2	3	H	16	-	-	15.5	14.8	14	*13.4	*12.3	*11.2	*9.9	8.5	7	

*: 水泵高效工作区间
*: High Efficiency Eta Of Pump

零部件分解图 Exploded View Of Main Component

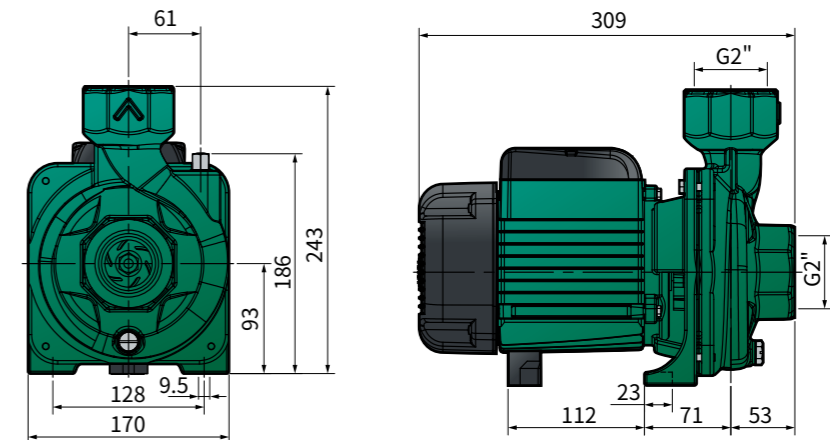


主零部件清单 List Of Main Component

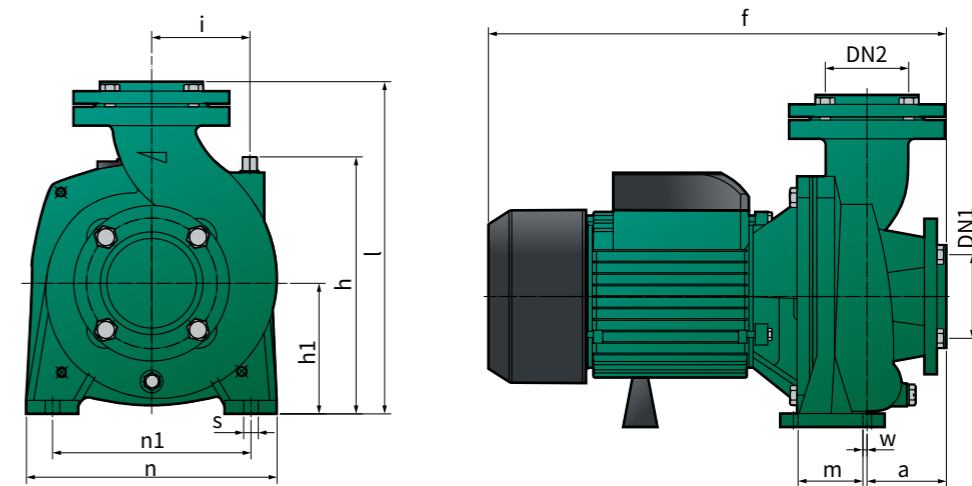
● 标准配置 Standard Configuration ○ 可选择配置 Optional Configuration

序号 No.	零件名称 Component	规格 / 材质 / 结构说明 Specification/Construction Characteristics
1	泵体 Pump Body	灰铸铁 HT200, 电泳防锈处理 (耐盐雾试验 300 小时 +) Cast Iron HT200, Electro-coating Finished (Salt Spray Resistant Test For 300+ Hours)
2	叶轮 Impeller	铜叶轮 (含量 58%+) Brass (H58%+) ○ 301 款 (压制石墨 + 陶瓷) ○ CN 款 (压制石墨 + 陶瓷, 特殊结构满足频繁启停工况)
3	机械密封 Mechanical Seal	● 14DIN 款 (呋喃浸渍石墨 + 碳化硅静环, 设计寿命 25000 小时) ○ 301 Type (Karbate Impervious Graphite+Ceramic) ○ CN Type (Karbate Impervious Graphite+Ceramic, Special Construction Stand For Start-stop Frequently) ● 14DIN Type (Furan Impregnation Graphite+SIC, Use Life 25,000+ Hours)
4	前盖盘 Bracket Plate	灰铸铁 HT200, 电泳防锈处理 (耐盐雾试验 300 小时 +), * 仅限 50CF750 型号 Cast Iron HT200, Electro-coating Finished (Salt Spray Resistant Test For 300+ Hours), * Model 50CF750 Only
5	前盖 Bracket	灰铸铁 HT200, 电泳防锈处理 (耐盐雾试验 300 小时 +) Cast Iron HT200, Electro-coating Finished (Salt Spray Resistant Test For 300+ Hours)
6	轴承 Ball Bearings	○ 标准型 ○ 人本 ● 台湾东培 ○ Standard Type ○ C&U ● TPI(Taiwan)
7	转子轴 Motor Shaft	焊接转子轴: 304 不锈钢 (水泵端) + 碳钢 (电机端) Welding Shaft: Stainless Steel 304 (Pump Side)+Carbon Steel (Motor Side)
8	接线盒 Terminal Box	ABS 塑料 Plastic ABS
9	电容器 Capacitor	● CBB60 塑壳电容 ○ CBB65 防爆电容 ○ 450VL@220-240V 电机 ○ 300VL@110-127V 电机 ● CBB60 Plastic Shell Capacitor ○ CBB65 Explosion-proof Capacitor ○ 450VL@220-240V Motor ○ 300VL@110-127V Motor
10	接线柱 Terminal Board	阻燃 PBT Flame Retarding PBT
11	机壳 Motor Housing	铝压铸 ADC12 合金铝 Aluminum ADC12
12	风叶 Fan	○ PP 塑料 ● 尼龙塑料 ○ Plastic PP ● Nylon PA6
13	风罩 Fan Cover	PP 塑料 (50CF750), 拉伸铁风罩 (其余型号) Plastic PP(50CF750), Tensile Steel Plate(Other Models)
14	插头线 Plug Cord	● 国标三扁插 ○ 定制插头线 ○ 三芯测试线 ● 3 Core Testing Cable ○ Customized Cable Plug
15	电机 Motor	○ 标准铜线电机 ● 高效电机 ○ 经济版电机 ● 三相电机 ○ 定制 60 赫兹电机 ○ Standard Copper Wire ● High Efficiency Motor ○ Economical Motor ● 3-Phase Motor ○ Customized 60 HZ Motor

安装尺寸 Installation Dimensions



50CF550/750



型号 Model	DN1	DN2	主要安装尺寸 Main Installation Dimensions(mm)										
			a	f	h	h1	i	l	w	n	n1	m	s
50CF1100	G2"	G2"	63	400	202	113	78	259	6	203	160	-	10
50CF1500	G2"	G2"	63	400	202	113	78	259	6	203	160	-	10
80CF2200	G3"	G3"	70	432	235	120	100	315	0	240	192	65	12

工作电流 Working Current

型号 Model	1~220V/50Hz	3~380V/50Hz
50CF550	3.5A	1.4A
50CF750	5A	1.8A
50CF1100	7.3A	2.5A
50CF1500	9.5A	3.3A
80CF2200	13.8A	4.8A

包装箱信息 Packaging Information

型号 Model	净重 N.W (kg)	台数 / 箱 PCS/CTN	毛重 / 箱 G.W./CTN (kg)	尺寸 MEAS (cm)
50CF550	13.50	1	14.60	32.5X22X29.5
50CF750	14.05	1	15.15	32.5X22X29.5
50CF1100	18.70	1	19.50	43X22.5X29.5
50CF1500	19.60	1	20.40	43X22.5X29.5
80CF2200	31.50	1	32.50	35.5X47.5X28



工业循环
Industrial



热水工程
HVAC



设备配套
Equipment



农业灌溉
Irrigation



家庭使用
Household

CFG

离心泵
Centrifugal Pump



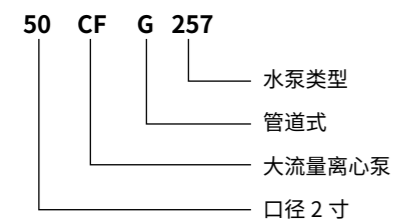
工作条件

- 可用于抽取、输送清水或类似水的液体
- 流体温度: 0°C ~90°C
- 环境温度: < 40°C
- 最大承压值: 10 bar
- 可连续 24 小时不间断工作
- 绝缘等级: B 级
- 防护等级: IP44

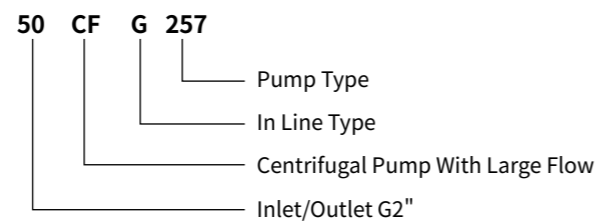
Working Conditions

- Clean liquids without suspended solids, non-aggressive
- Liquid temperature: 0°C ~90°C
- Ambient temperature: < 40°C
- Maximum pressure: 10 bar
- Continuous service S1
- Insulation: B
- Protection: IP44

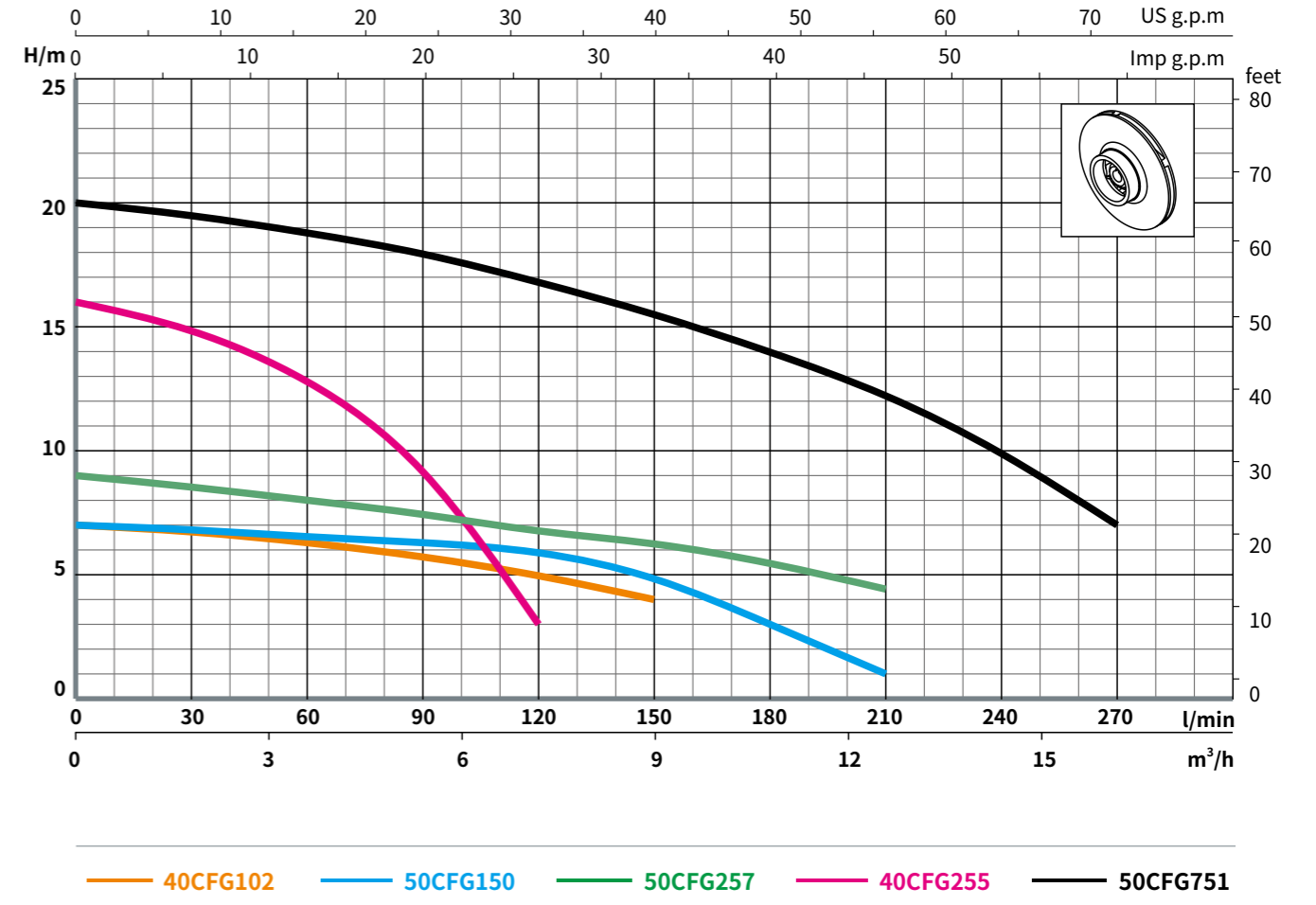
型号定义



Model Definition



性能曲线图 Performance Curve (n=2850 r/min)



技术参数 Performance Data

型号 Model	功率 Power	Q	m³/h												
			0	1.8	3.6	5.4	7.2	9.0	10.8	12.7	14.5	16.3			
单相 Single-phase	三相 Three-phase		l/min												
			0	30	60	90	120	150	180	210	240	270			
40CFG102	40CFG102T	0.28 0.37	7	6.7	6.4	*5.8	*5	4							
50CFG150	50CFG150T	0.3 0.4	7	6.8	6.5	6.3	*6	*5	3	1					
40CFG255	40CFG255T	0.45 0.6	16	15	*13	*9.7	3								
50CFG257	50CFG257T	0.45 0.6	9	8.5	8	7.5	6.8	*6.2	*5.4	4.6					
50CFG751	50CFG751T	1 1.3	20	19.5	18.8	18	16.8	15.5	*14	*12.3	10	7			

*: 水泵高效工作区间
*: High Efficiency Eta Of Pump

零部件分解图 Exploded View Of Main Component

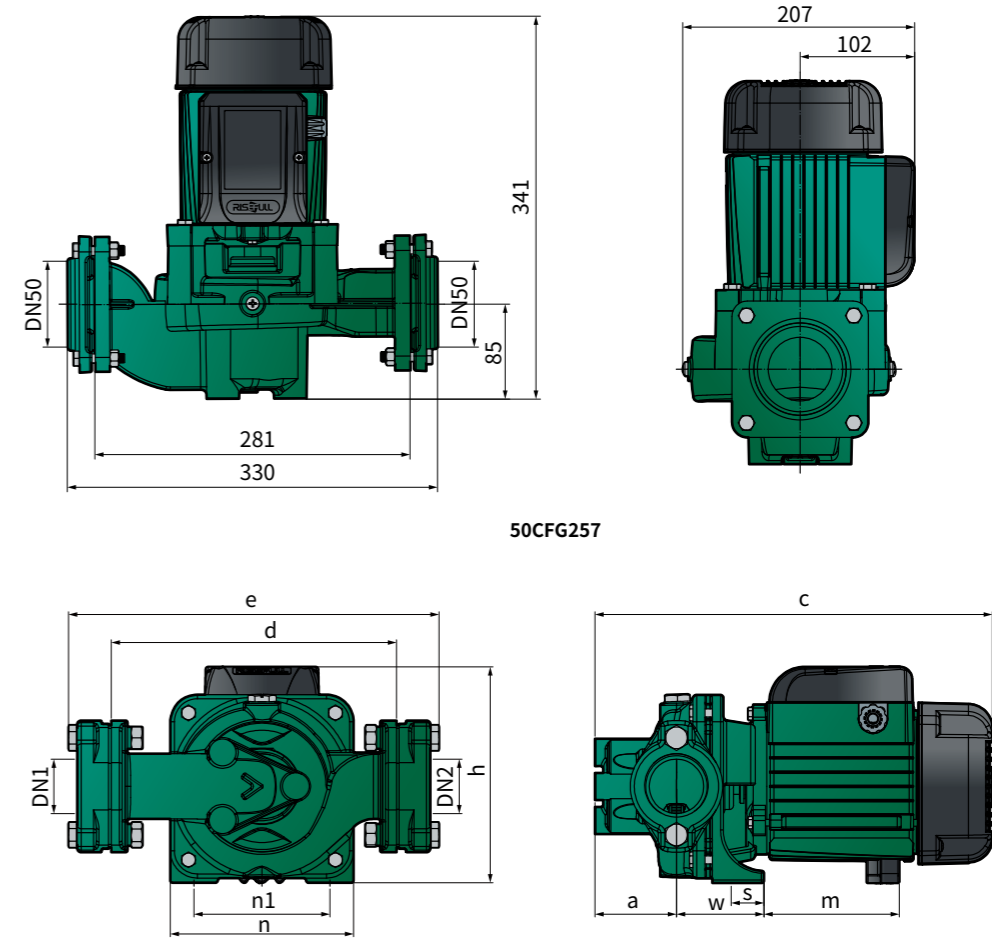


主零部件清单 List Of Main Component

● 标准配置 Standard Configuration ○ 可选择配置 Optional Configuration

序号 No.	零件名称 Component	规格 / 材质 / 结构说明 Specification/Construction Characteristics
1	泵体 Pump Body	灰铸铁 HT200, 电泳防锈处理 (耐盐雾试验 300 小时 +) Cast Iron HT200, Electro-coating Finished (Salt Spray Resistant Test For 300+ Hours)
2	叶轮 Impeller	● 铜叶轮 (含量 58%+) ○ 不锈钢叶轮 (SUS304 冲压焊接) ● Brass (H58%+) ○ Stainless Steel (SUS304 Stamping & Welding) ○ 301 款 (压制石墨 + 陶瓷) ○ CN 款 (压制石墨 + 陶瓷, 特殊结构满足频繁启停工况)
3	机械密封 Mechanical Seal	● 14DIN 款 (呋喃浸渍石墨 + 碳化硅静环, 设计寿命 25000 小时) ○ 301 Type (Karbate Impervious Graphite+Ceramic) ○ CN Type (Karbate Impervious Graphite+Ceramic, Special Construction Stand For Start-stop Frequently) ● 14DIN Type (Furan Impregnation Graphite+SIC, Use Life 25,000+ Hours)
4	前盖盘 Bracket Plate	灰铸铁 HT200, 电泳防锈处理 (耐盐雾试验 300 小时 +) Cast Iron HT200, Electro-coating Finished (Salt Spray Resistant Test For 300+ Hours)
5	前盖 Bracket	灰铸铁 HT200, 电泳防锈处理 (耐盐雾试验 300 小时 +) Cast Iron HT200, Electro-coating Finished (Salt Spray Resistant Test For 300+ Hours)
6	轴承 Ball Bearings	○ 标准型 ○ 人本 ● 台湾东培 ○ Standard Type ○ C&U ● TPI(Taiwan)
7	转子轴 Motor Shaft	焊接转子轴: 304 不锈钢 (水泵端) + 碳钢 (电机端) Welding Shaft: Stainless Steel 304 (Pump Side)+Carbon Steel (Motor Side)
8	接线盒 Terminal Box	ABS 塑料 Plastic ABS
9	电容器 Capacitor	● CBB60 塑壳电容 ○ CBB65 防爆电容 ○ 450VL@220-240V 电机 ○ 300VL@110-127V 电机 ● CBB60 Plastic Shell Capacitor ○ CBB65 Explosion-proof Capacitor ○ 450VL@220-240V Motor ○ 300VL@110-127V Motor
10	接线柱 Terminal Board	阻燃 PBT Flame Retarding PBT
11	机壳 Motor Housing	铝压铸 ADC12 合金铝 Aluminum ADC12
12	风叶 Fan	○ PP 塑料 ● 尼龙塑料 ○ Plastic PP ● Nylon PA6
13	风罩 Fan Cover	PP 塑料 Plastic PP
14	插头线 Plug Cord	● 国标三扁插 ○ 定制插头线 ○ 三芯测试线 ● 3 Core Testing Cable ○ Customized Cable Plug
15	电机 Motor	○ 标准铜线电机 ● 高效电机 ○ 经济版电机 ○ 三相电机 ○ 定制 60 赫兹电机 ○ Standard Copper Wire ● High Efficiency Motor ○ Economical Motor ○ 3-Phase Motor ○ Customized 60 HZ Motor

安装尺寸 Installation Dimensions



型号 Model	DN1	DN2	主要安装尺寸 Main Installation Dimensions(mm)									
			a	c	d	e	h	m	n	n1	w	s
40CFG102	40	40	60	293	210	273	159	100	135	100	65	20
50CFG150	50	50	56	289	260	309	159	100	135	100	65	20
40CFG255	40	40	63	289	260	323	176	105	135	100	60	20
50CFG751	50	50	85	342	281	330	194	118	159	125	67	23

工作电流 Working Current

型号 Model	1~220V/50Hz	3~380V/50Hz
40CFG102	1.5A	0.5A
50CFG150	1.5A	0.8A
40CFG255	2.5A	1.8A
50CFG257	2.5A	1.8A
50CFG751	5.2A	2A

包装箱信息 Packaging Information

型号 Model	净重 N.W (kg)	台数 / 箱 PCS/CTN	毛重 / 箱 G.W./CTN (kg)	尺寸 MEAS (cm)
40CFG102	9.00	1	9.50	31X25X21.5
50CFG150	12.60	1	13.10	37X32X25
40CFG255	10.90	1	11.40	37X32X25
50CFG257	18.80	1	19.30	37X32X25
50CFG751	21.00	1	21.50	37X32X25



工业循环
Industrial



热水工程
HVAC



设备配套
Equipment



农业灌溉
Irrigation



家庭使用
Household



PN

漩涡泵
Peripheral Pump



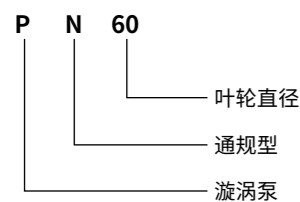
工作条件

- 可用于抽取、输送清水或类似水的液体
- 流体温度: 0°C ~90°C
- 环境温度: < 40°C
- 最大承压值: 10 bar
- 可连续 24 小时不间断工作
- 绝缘等级: B 级
- 防护等级: IP44

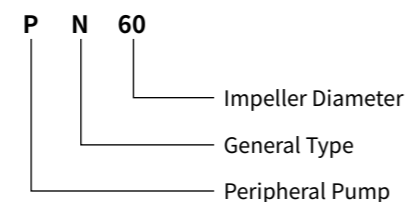
Working Conditions

- Clean liquids without suspended solids, non-aggressive
- Liquid temperature: 0°C ~90°C
- Ambient temperature: < 40°C
- Maximum pressure: 10 bar
- Continuous service S1
- Insulation: B
- Protection: IP44

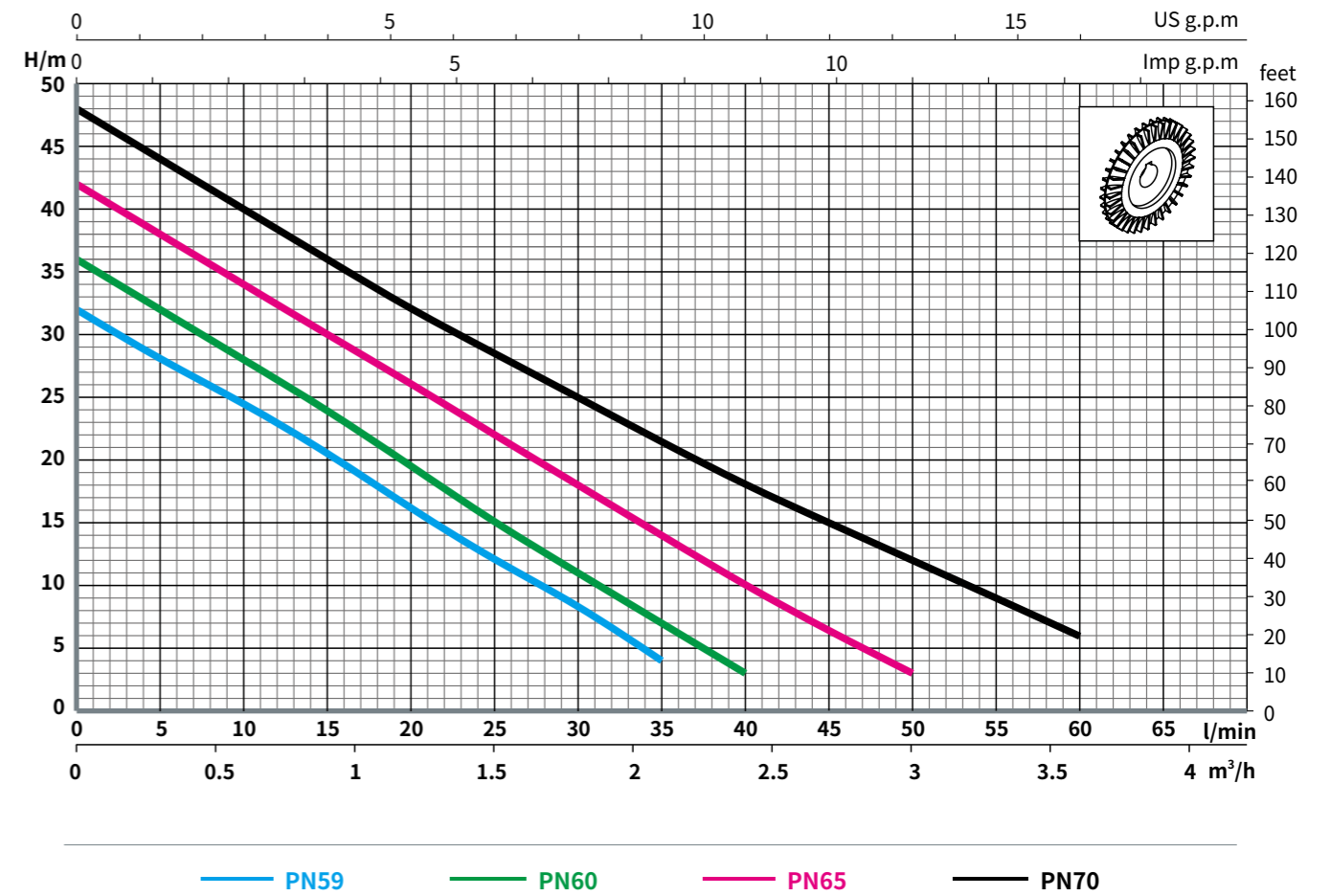
型号定义



Model Definition



性能曲线图 Performance Curve (n=2850 r/min)

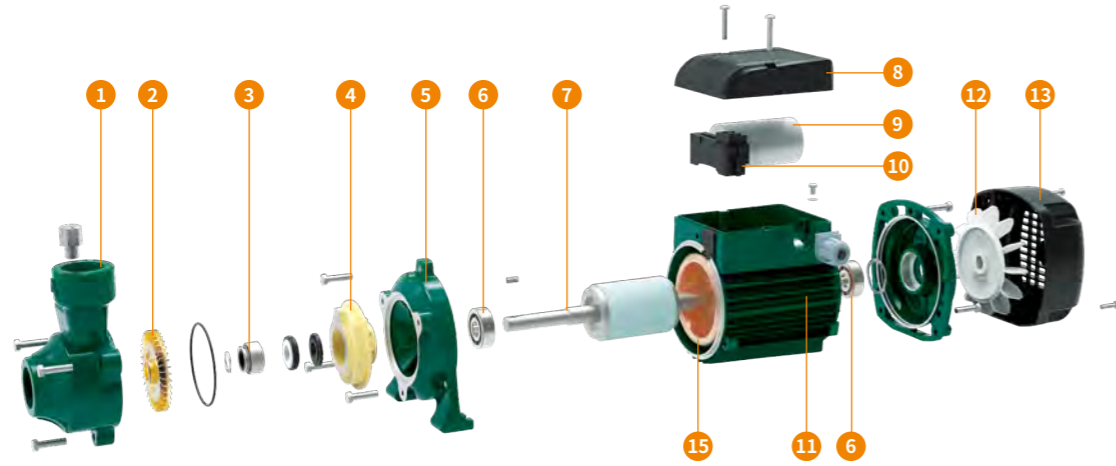


技术参数 Performance Data

型号 Model	功率 Power	Q															
		m³/h		l/min													
单相 Single-phase	三相 Three-phase	kW	HP	0	0.3	0.6	0.9	1.2	1.5	1.8	2.1	2.4	2.7	3.0	3.3	3.6	3.9
PN59	PN59T	0.33	0.45	32	28	24.5	*20.5	*16	*12	*8.5	4						
PN60	PN60T	0.37	0.5	36	32	28	24	*19.5	*15	*11	7	3					
PN65	PN65T	0.55	0.75	42	38	34	30	26	*22	*18	*14	*10	6.5	3			
PN70	PN70T	0.75	1	48	44	40	36	32	28.5	*25	*21.5	*18	*15	*12	9	6	

*: 水泵高效工作区间
*: High Efficiency Eta Of Pump

零部件分解图 Exploded View Of Main Component

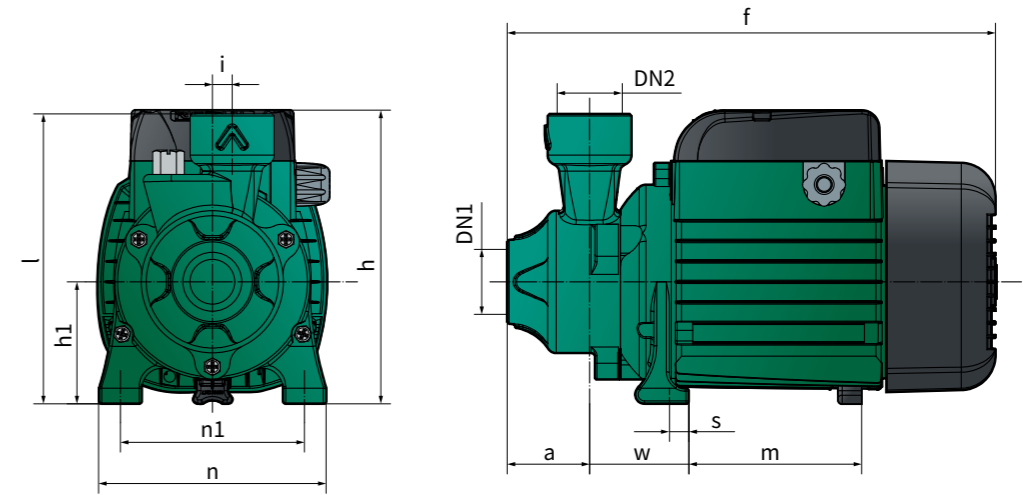


主零部件清单 List Of Main Component

● 标准配置 Standard Configuration ○ 可选择配置 Optional Configuration

序号 No.	零件名称 Component	规格 / 材质 / 结构说明 Specification/Construction Characteristics
1	泵体 Pump Body	灰铸铁 HT200, 电泳防锈处理 (耐盐雾试验 300 小时 +) Cast Iron HT200, Electro-coating Finished (Salt Spray Resistant Test For 300+ Hours)
2	叶轮 Impeller	● 铜叶轮 (含量 57%+) ○ 不锈钢叶轮 SUS304 ● Brass (H57%+) ○ Stainless Steel SUS304
3	机械密封 Mechanical Seal	● 301 款 (压制石墨 + 陶瓷) ○ CN 款 (压制石墨 + 陶瓷, 特殊结构满足频繁启停工况) ○ 14DIN 款 (呋喃浸渍石墨 + 碳化硅静环, 设计寿命 25000 小时) ● 301 Type (Karbate Impervious Graphite+Ceramic) ○ CN Type (Karbate Impervious Graphite+Ceramic, Special Construction Stand For Start-stop Frequently) ○ 14DIN Type (Furan Impregnation Graphite+SIC, Use Life 25,000+ Hours)
4	前盖盘 Bracket Plate	● PPO 前盖盘 (高等级耐温 150°C) ○ 不锈钢精铸 SUS304 ○ 铜 (含量 57%+) ● PPO (High Temperature Resistant For 150°C) ○ Precision Casting SUS304 ○ Brass (H57%+)
5	前盖 Bracket	铝压铸 ADC12 合金铝 Aluminum ADC12
6	轴承 Ball Bearings	● 标准型 ○ 人本 ○ 台湾东培 ● Standard Type ○ C&U ○ TPI(Taiwan)
7	转子轴 Motor Shaft	● 2CR13 光轴 ○ 焊接转子轴: 304 不锈钢 (水泵端) + 碳钢 (电机端) ● SUS410(2CR13) ○ Welding Shaft: Stainless Steel 304 (Pump Side)+Carbon Steel (Motor Side)
8	接线盒 Terminal Box	ABS 塑料 Plastic ABS
9	电容器 Capacitor	● CBB60 塑壳电容 ○ CBB65 防爆电容 ○ 450VL@220-240V 电机 ○ 300VL@110-127V 电机 ● CBB60 Plastic Shell Capacitor ○ CBB65 Explosion-proof Capacitor ○ 450VL@220-240V Motor ○ 300VL@110-127V Motor
10	接线柱 Terminal Board	阻燃 PBT Flame Retarding PBT
11	机壳 Motor Housing	铝压铸 ADC12 合金铝 Aluminum ADC12
12	风叶 Fan	● PP 塑料 ○ 尼龙塑料 ● Plastic PP ○ Nylon PA6
13	风罩 Fan Cover	PP 塑料 Plastic PP
14	插头线 Plug Cord	● 国标三扁插 ○ 定制插头线 ○ 三芯测试线 ● 3 Core Testing Cable ○ Customized Cable Plug
15	电机 Motor	● 标准铜线电机 ○ 高效电机 ○ 经济版电机 ○ 三相电机 ○ 定制 60 赫兹电机 ● Standard Copper Wire ○ High Efficiency Motor ○ Economical Motor ○ 3-Phase Motor ○ Customized 60 HZ Motor

安装尺寸 Installation Dimensions



型号 Model	DN1	DN2	主要安装尺寸 Main Installation Dimensions(mm)										
			a	f	h	h1	i	l	m	n	n1	w	s
PN59	G1	G1	42	250	151	63	10	149	89	117	94	51	10
PN60	G1	G1	42	250	151	63	10	149	89	117	94	51	10
PN65	G1	G1	44	279	178	76	13	165	96	140	114	59	10
PN70	G1	G1	45	279	178	76	13	167	96	140	114	59	10

工作电流 Working Current

型号 Model	1~220V/50Hz	3~380V/50Hz
PN59	2.5A	1.8A
PN60	2.7A	0.8A
PN65	4A	1.5A
PN70	5.8A	2A

包装箱信息 Packaging Information

型号 Model	净重 N.W (kg)	台数 / 箱 PCS/CTN	毛重 / 箱 G.W./CTN (kg)	尺寸 MEAS (cm)	台数 / 箱 PCS/CTN	毛重 / 箱 G.W./CTN (kg)	尺寸 MEAS (cm)
PN59	5.15	1	5.35	26X16X17.5	4	22.25	33.6X27.2X38.3
PN60	5.65	1	5.90	26X16X17.5	4	25.15	33.6X27.2X38.3
PN65	8.10	1	8.60	30.5X18X26	\	\	\
PN70	9.50	1	10.05	30.5X18X26	\	\	\



工业循环
Industrial



热水工程
HVAC



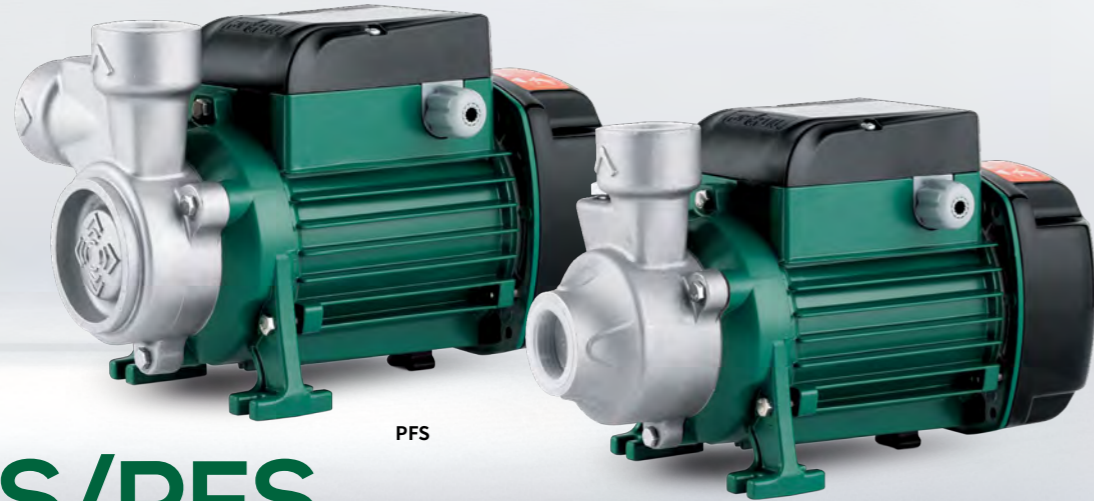
设备配套
Equipment



农业灌溉
Irrigation



家庭使用
Household



PFS

PNS

PNS/PFS

漩涡泵
Peripheral Pump



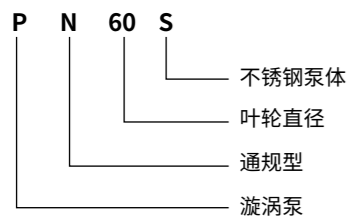
工作条件

- 可用于抽取、输送清水或类似水的液体
- 流体温度: 0°C ~90°C
- 环境温度: < 40°C
- 最大承压值: 10 bar
- 可连续 24 小时不间断工作
- 绝缘等级: B 级
- 防护等级: IP44

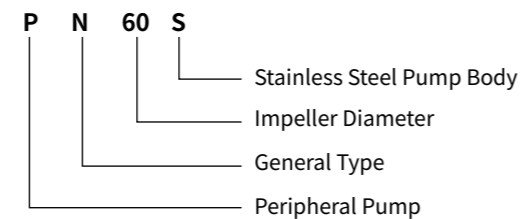
Working Conditions

- Clean liquids without suspended solids, non-aggressive
- Liquid temperature: 0°C ~90°C
- Ambient temperature: < 40°C
- Maximum pressure: 10 bar
- Continuous service S1
- Insulation: B
- Protection: IP44

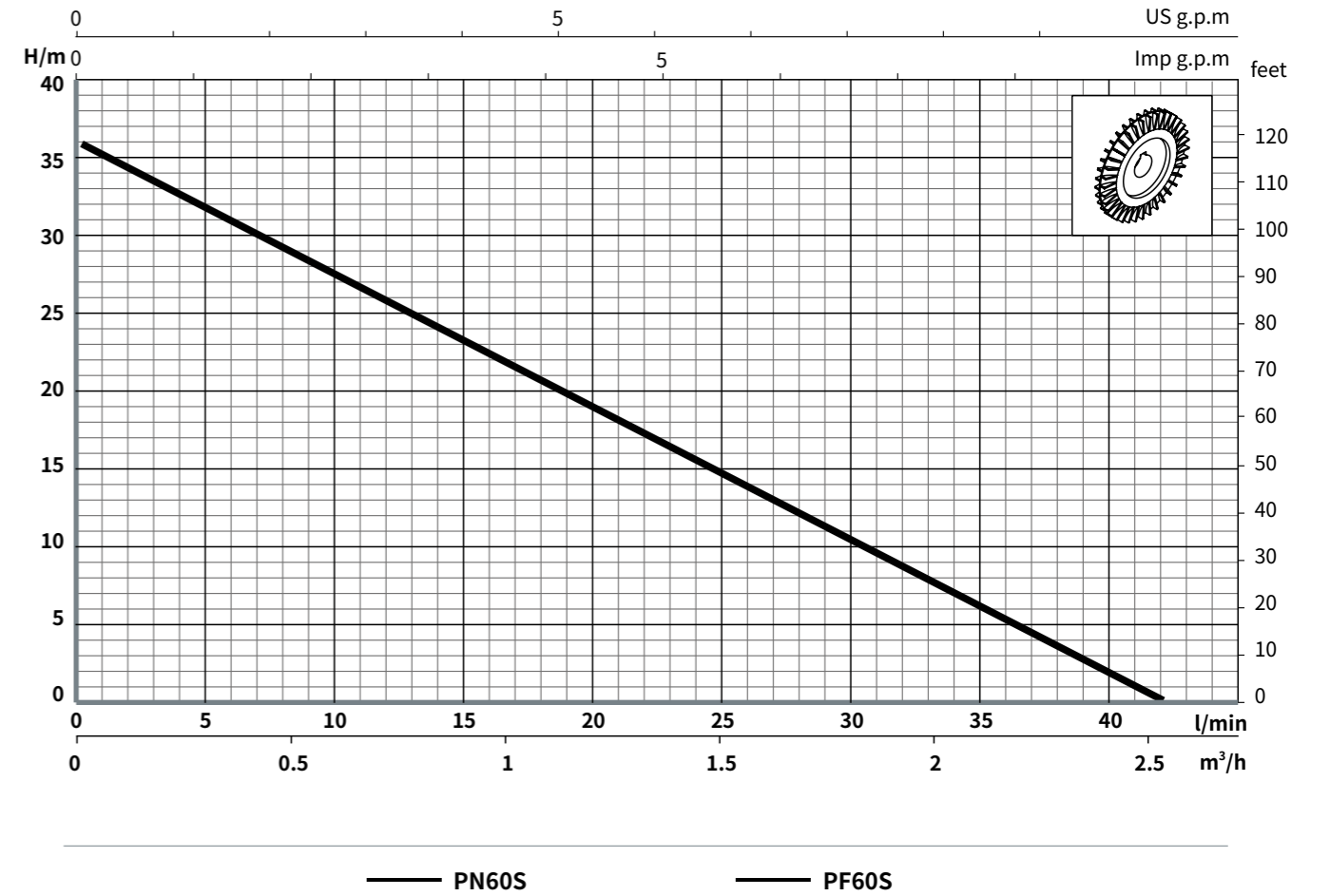
型号定义



Model Definition



性能曲线图 Performance Curve (n=2850 r/min)

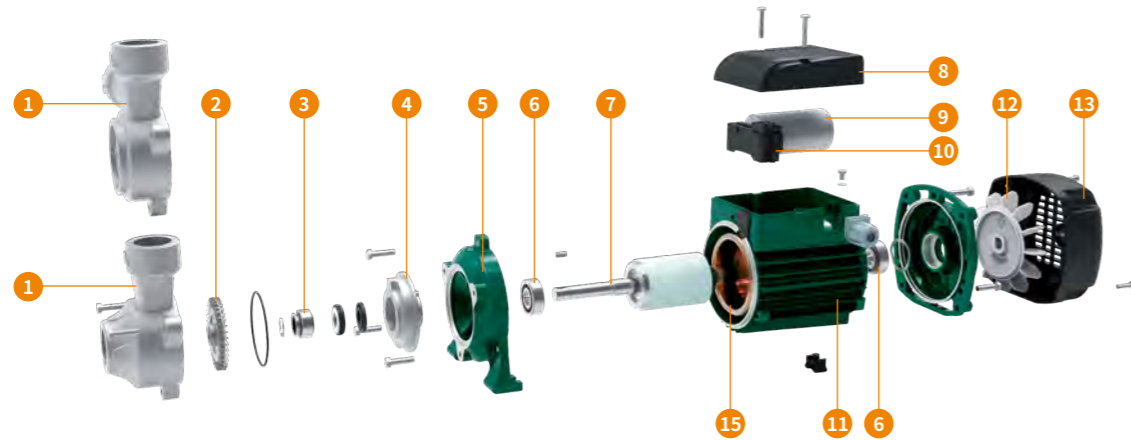


技术参数 Performance Data

型号 Model	功率 Power		Q	m³/h								
	单相 Single-phase	三相 Three-phase		0	0.3	0.6	0.9	1.2	1.5	1.8	2.1	2.4
				l/min								
				0	5	10	15	20	25	30	35	40
PN60S	PN60ST	0.37	0.5	36	32	27.5	23	*18.5	*14	*9.5	5.5	2
PF60S	PF60ST	0.37	0.5	36	32	27.5	23	*18.5	*14	*9.5	5.5	2

*: 水泵高效工作区间
*: High Efficiency Eta Of Pump

零部件分解图 Exploded View Of Main Component

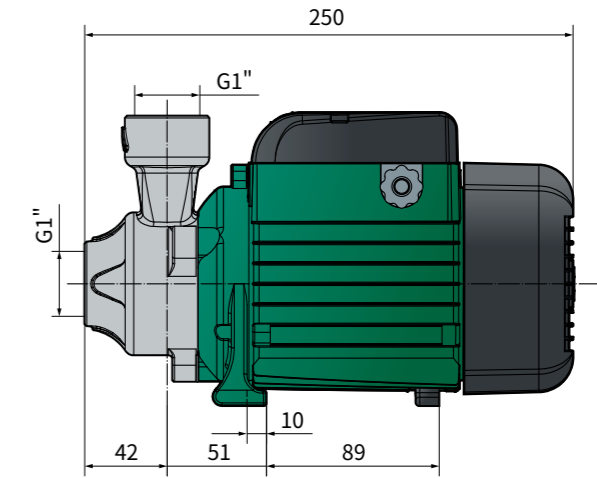
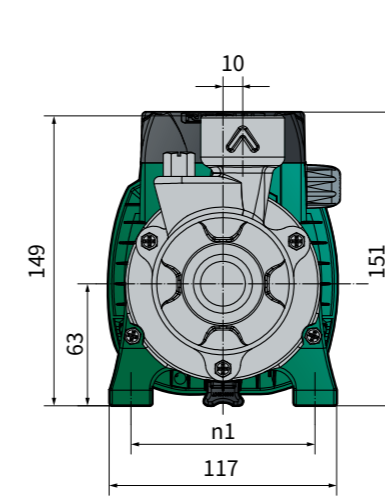


主零部件清单 List Of Main Component

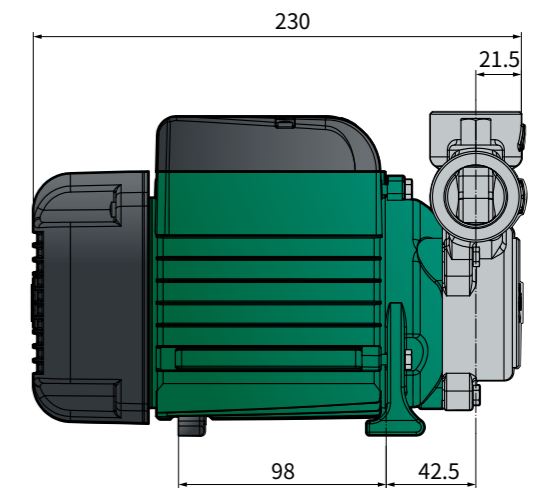
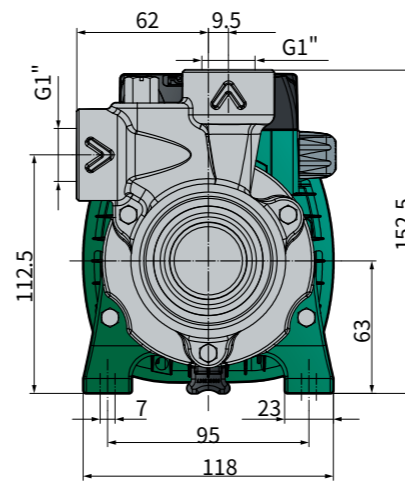
● 标准配置 Standard Configuration ○ 可选择配置 Optional Configuration

序号 No.	零件名称 Component	规格 / 材质 / 结构说明 Specification/Construction Characteristics
1	泵体 Pump Body	<input checked="" type="radio"/> 不锈钢精铸 SUS304 <input type="radio"/> 不锈钢精铸 SUS316 <input checked="" type="radio"/> Precision Casting SUS304 <input type="radio"/> Precision Casting SUS316
2	叶轮 Impeller	<input checked="" type="radio"/> 铜叶轮 (含量 57%+) <input type="radio"/> 不锈钢叶轮 SUS304 <input checked="" type="radio"/> Brass (H57%+) <input type="radio"/> Stainless Steel SUS304 ○ 301 款 (压制石墨 + 陶瓷) ○ CN 款 (压制石墨 + 陶瓷, 特殊结构满足频繁启停工况)
3	机械密封 Mechanical Seal	<input checked="" type="radio"/> 14DIN 款 (呋喃浸渍石墨 + 碳化硅静环, 设计寿命 25000 小时) <input type="radio"/> 301 Type (Karbate Impervious Graphite+Ceramic) <input type="radio"/> CN Type (Karbate Impervious Graphite+Ceramic, Special Construction Stand For Start-stop Frequently) <input checked="" type="radio"/> 14DIN Type (Furan Impregnation Graphite+SIC, Use Life 25,000+ Hours)
4	前盖盘 Bracket Plate	<input checked="" type="radio"/> 不锈钢精铸 SUS304 <input type="radio"/> 不锈钢精铸 SUS316 <input type="radio"/> PPO 前盖盘 (高等级耐温 150°C) <input checked="" type="radio"/> Precision Casting SUS304 <input type="radio"/> Precision Casting SUS316 <input type="radio"/> PPO (High Temperature Resistant For 150°C)
5	前盖 Bracket	铝压铸 ADC12 合金铝 Aluminum ADC12
6	轴承 Ball Bearings	<input type="radio"/> 标准型 <input type="radio"/> 人本 <input checked="" type="radio"/> 台湾东培 <input type="radio"/> Standard Type <input type="radio"/> C&U <input checked="" type="radio"/> TPI(Taiwan)
7	转子轴 Motor Shaft	<input checked="" type="radio"/> 焊接转子轴: 304 不锈钢 (水泵端) + 碳钢 (电机端) <input type="radio"/> 2CR13 光轴 <input checked="" type="radio"/> Welding Shaft: Stainless Steel 304 (Pump Side)+Carbon Steel (Motor Side) <input type="radio"/> SUS410(2CR13)
8	接线盒 Terminal Box	ABS 塑料 Plastic ABS
9	电容器 Capacitor	<input checked="" type="radio"/> CBB60 塑壳电容 <input type="radio"/> CBB65 防爆电容 <input type="radio"/> 450VL@220-240V 电机 <input type="radio"/> 300VL@110-127V 电机 <input checked="" type="radio"/> CBB60 Plastic Shell Capacitor <input type="radio"/> CBB65 Explosion-proof Capacitor <input type="radio"/> 450VL@220-240V Motor <input type="radio"/> 300VL@110-127V Motor
10	接线柱 Terminal Board	阻燃 PBT Flame Retarding PBT
11	机壳 Motor Housing	铝压铸 ADC12 合金铝 Aluminum ADC12
12	风叶 Fan	<input type="radio"/> PP 塑料 <input checked="" type="radio"/> 尼龙塑料 <input type="radio"/> Plastic PP <input checked="" type="radio"/> Nylon PA6
13	风罩 Fan Cover	PP 塑料 Plastic PP
14	插头线 Plug Cord	<input checked="" type="radio"/> 国标三扁插 <input type="radio"/> 定制插头线 <input type="radio"/> 三芯测试线 <input checked="" type="radio"/> 3 Core Testing Cable <input type="radio"/> Customized Cable Plug
15	电机 Motor	<input type="radio"/> 标准铜线电机 <input checked="" type="radio"/> 高效电机 <input type="radio"/> 经济版电机 <input type="radio"/> 三相电机 <input type="radio"/> 定制 60 赫兹电机 <input type="radio"/> Standard Copper Wire <input checked="" type="radio"/> High Efficiency Motor <input type="radio"/> Economical Motor <input type="radio"/> 3-Phase Motor <input type="radio"/> Customized 60 HZ Motor

安装尺寸 Installation Dimensions



PN60S



PF60S

工作电流 Working Current

型号 Model	1~220V/50Hz	3~380V/50Hz
PN60S	2.7A	1A
PF60S	2.7A	1A

包装箱信息 Packaging Information

型号 Model	净重 N.W (kg)	台数 / 箱 PCS/CTN	毛重 / 箱 G.W./CTN (kg)	尺寸 MEAS (cm)	台数 / 箱 PCS/CTN	毛重 / 箱 G.W./CTN (kg)	尺寸 MEAS (cm)
PN60S	5.55	1	5.85	26X16X17.5	4	24	34X27.5X38.5
PF60S	5.35	1	5.60	26X16X17.5	4	23	34X27.5X38.5



工业循环
Industrial



热水工程
HVAC



设备配套
Equipment



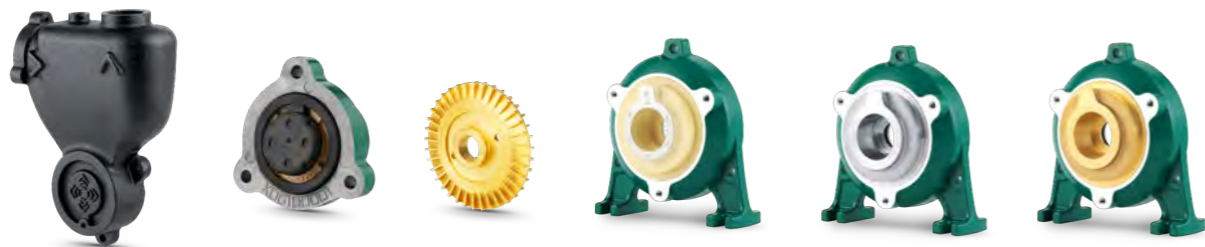
农业灌溉
Irrigation



家庭使用
Household

PS

自吸漩涡泵 Self-priming Peripheral Pump



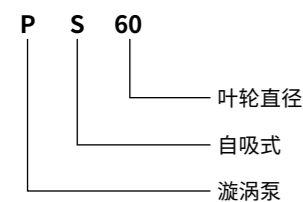
工作条件

- 可用于抽取、输送清水或类似水的液体
- 流体温度: 0°C ~90°C
- 环境温度: < 40°C
- 最大承压值: 10 bar
- 可连续 24 小时不间断工作
- 绝缘等级: B 级
- 防护等级: IP44

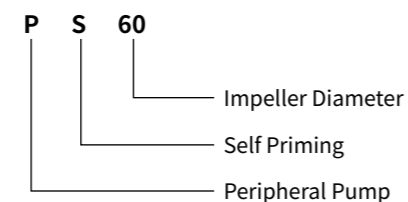
Working Conditions

- Clean liquids without suspended solids, non-aggressive
- Liquid temperature: 0°C ~90°C
- Ambient temperature: < 40°C
- Maximum pressure: 10 bar
- Continuous service S1
- Insulation: B
- Protection: IP44

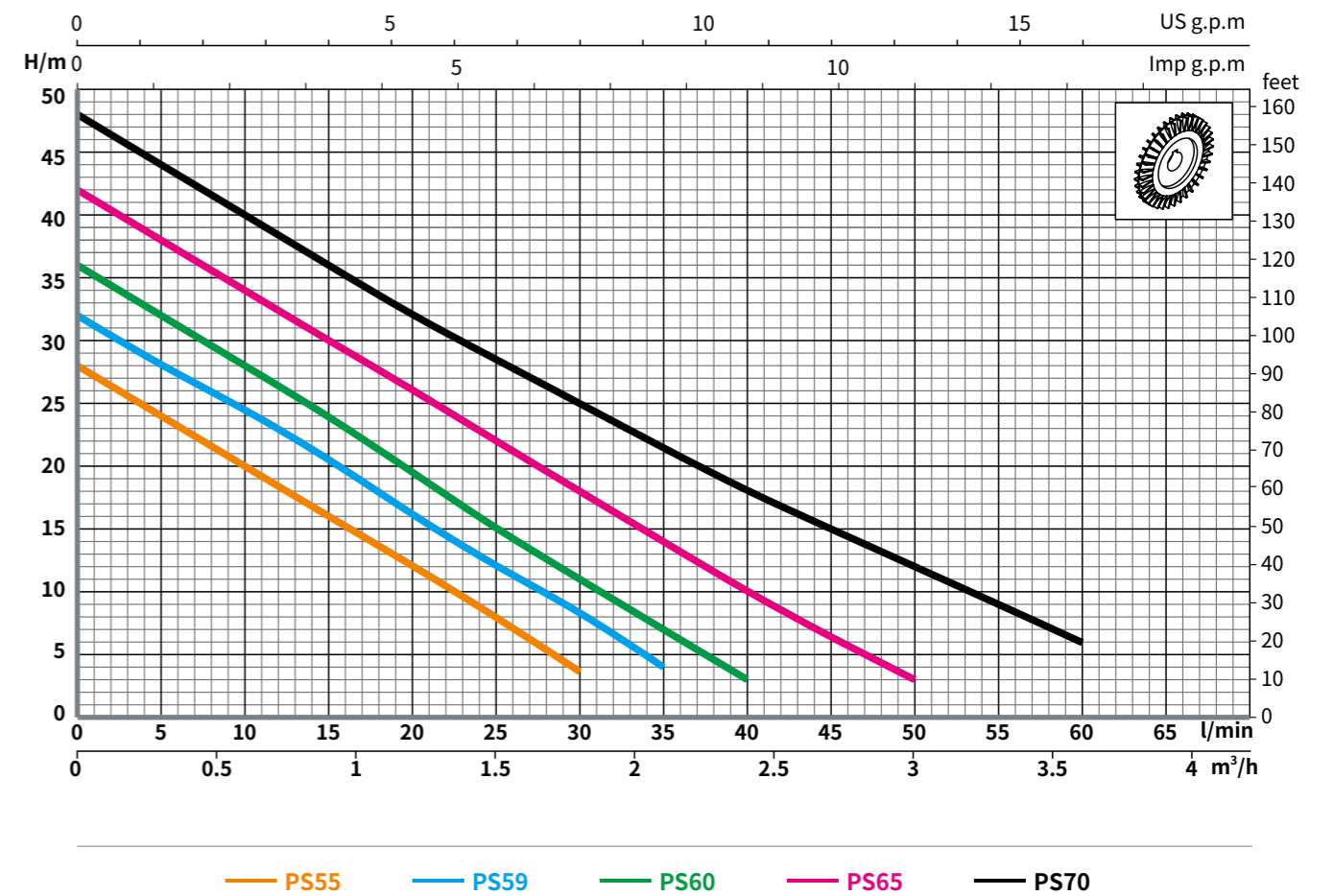
型号定义



Model Definition



性能曲线图 Performance Curve (n=2850 r/min)

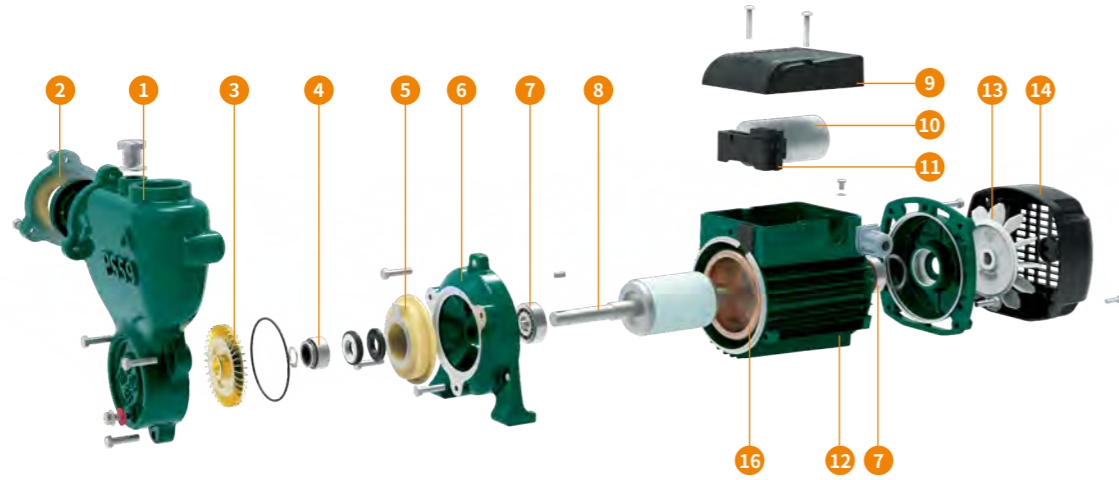


技术参数 Performance Data

型号 Model	功率 Power		Q	m³/h															
	单相 Single-phase	三相 Three-phase		0	0.3	0.6	0.9	1.2	1.5	1.8	2.1	2.4	2.7	3.0	3.3	3.6	3.9		
				0	5	10	15	20	25	30	35	40	45	50	55	60	65		
PS55	PS55T	0.3	0.4	28	24	20	*16	*12	*8	3.5									
PS59	PS59T	0.33	0.45	32	28	24.5	*20.5	*16	*12	*8.5	4								
PS60	PS60T	0.37	0.5	36	32	28	24	*19.5	*15	*11	7	3							
PS65	PS65T	0.55	0.75	42	38	34	30	26	*22	*18	*14	*10	6.5	3					
PS70	PS70T	0.75	1	48	44	40	36	32	28.5	*25	*21.5	*18	*15	*12	9	6			

*: 水泵高效工作区间
*: High Efficiency Eta Of Pump

零部件分解图 Exploded View Of Main Component

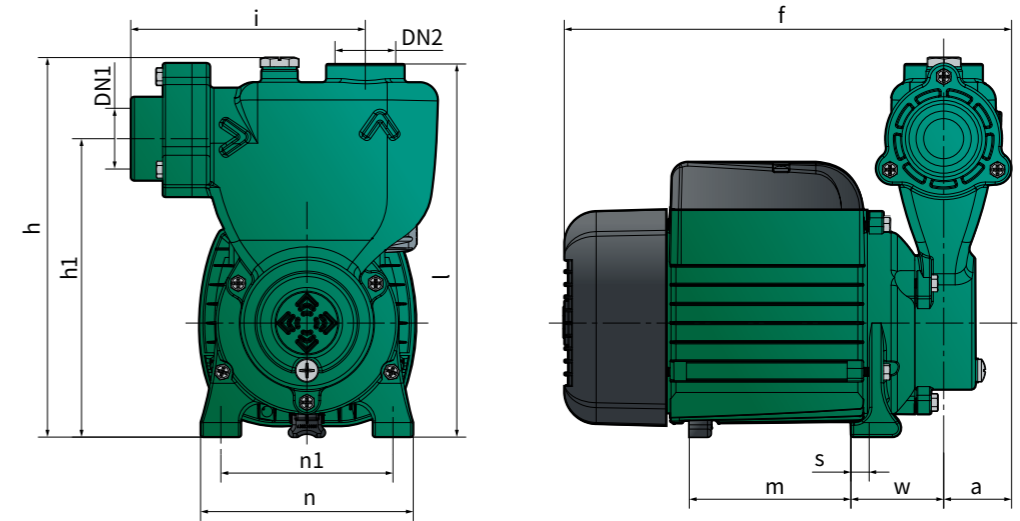


主零部件清单 List Of Main Component

● 标准配置 Standard Configuration ○ 可选择配置 Optional Configuration

序号 No.	零件名称 Component	规格 / 材质 / 结构说明 Specification/Construction Characteristics
1	泵体 Pump Body	灰铸铁 HT200, 电泳防锈处理 (耐盐雾试验 300 小时 +) Cast Iron HT200, Electro-coating Finished (Salt Spray Resistant Test For 300+ Hours)
2	进水法兰 Inlet Flange	铝压铸 ADC12 合金铝, 内嵌橡胶止回阀 (三元乙丙) Aluminum ADC12, Rubber Check-valve Inside(EPDM)
3	叶轮 Impeller	● 铜叶轮 (含量 57%+) ○ 不锈钢叶轮 SUS304 ● Brass (H57%+) ○ Stainless Steel SUS304
4	机械密封 Mechanical Seal	● 301 款 (压制石墨 + 陶瓷) ○ CN 款 (压制石墨 + 陶瓷, 特殊结构满足频繁启停工况) ○ 14DIN 款 (呋喃浸渍石墨 + 碳化硅静环, 设计寿命 25000 小时) ● 301 Type (Karbate Impervious Graphite+Ceramic) ○ CN Type (Karbate Impervious Graphite+Ceramic, Special Construction Stand For Start-stop Frequently) ○ 14DIN Type (Furan Impregnation Graphite+SIC, Use Life 25,000+ Hours)
5	前盖盘 Bracket Plate	● PPO 前盖盘 (高等级耐温 150°C) ○ 不锈钢精铸 SUS304 ○ 铜 (含量 57%+) ● PPO (High Temperature Resistant For 150°C) ○ Precision Casting SUS304 ○ Brass (H57%+)
6	前盖 Bracket	铝压铸 ADC12 合金铝 Aluminum ADC12
7	轴承 Ball Bearings	● 标准型 ○ 人本 ○ 台湾东培 ● Standard Type ○ C&U ○ TPI(Taiwan)
8	转子轴 Motor Shaft	● 2CR13 光轴 ○ 焊接转子轴: 304 不锈钢 (水泵端) + 碳钢 (电机端) ● SUS410(2CR13) ○ Welding Shaft: Stainless Steel 304 (Pump Side)+Carbon Steel (Motor Side)
9	接线盒 Terminal Box	ABS 塑料 Plastic ABS
10	电容器 Capacitor	● CBB60 塑壳电容 ○ CBB65 防爆电容 ○ 450VL@220-240V 电机 ○ 300VL@110-127V 电机 ● CBB60 Plastic Shell Capacitor ○ CBB65 Explosion-proof Capacitor ○ 450VL@220-240V Motor ○ 300VL@110-127V Motor
11	接线柱 Terminal Board	阻燃 PBT Flame Retarding PBT
12	机壳 Motor Housing	铝压铸 ADC12 合金铝 Aluminum ADC12
13	风叶 Fan	● PP 塑料 ○ 尼龙塑料 ● Plastic PP ○ Nylon PA6
14	风罩 Fan Cover	PP 塑料 Plastic PP
15	插头线 Plug Cord	● 国标三扁插 ○ 定制插头线 ○ 三芯测试线 ● 3 Core Testing Cable ○ Customized Cable Plug
16	电机 Motor	● 标准铜线电机 ○ 高效电机 ○ 经济版电机 ○ 三相电机 ○ 定制 60 赫兹电机 ● Standard Copper Wire ○ High Efficiency Motor ○ Economical Motor ○ 3-Phase Motor ○ Customized 60 HZ Motor

安装尺寸 Installation Dimensions



型号 Model	DN1	DN2	主要安装尺寸 Main Installation Dimensions(mm)										
			a	f	h	h1	i	l	m	n	n1	w	s
PS59	G1	G1	37	245	211	166	128	207	89	117	94	51	10
PS60	G1	G1	37	245	208	164	129	204	89	117	94	51	10
PS65	G1	G1	37	272	235	185	137	231	96	140	114	59	10
PS70	G1	G1	38	272	248	200	149	244	96	140	114	58	10

工作电流 Working Current

型号 Model	1~220V/50Hz	3~380V/50Hz
PS55	1.5A	0.5A
PS59	2.5A	1.8A
PS60	2.7A	0.8A
PS65	4A	1.5A
PS70	5.8A	2A

包装箱信息 Packaging Information

型号 Model	净重 N.W (kg)	台数 / 箱 PCS/CTN	毛重 / 箱 G.W./CTN (kg)	尺寸 MEAS (cm)	台数 / 箱 PCS/CTN	毛重 / 箱 G.W./CTN (kg)	尺寸 MEAS (cm)
PS55	5.30	1	5.85	25X18X23	4	24.4	37.5X26.2X49
PS59	5.80	1	6.10	25X18X23	4	25.5	37.5X26.2X49
PS60	6.00	1	6.40	25X18X23	4	26.7	37.5X26.2X49
PS65	9.30	1	9.80	28x25x29	2	20.7	51.5X29X30
PS70	11.30	1	11.80	28x25x29	2	24.7	51.5X29X30



工业循环
Industrial



热水工程
HVAC



设备配套
Equipment

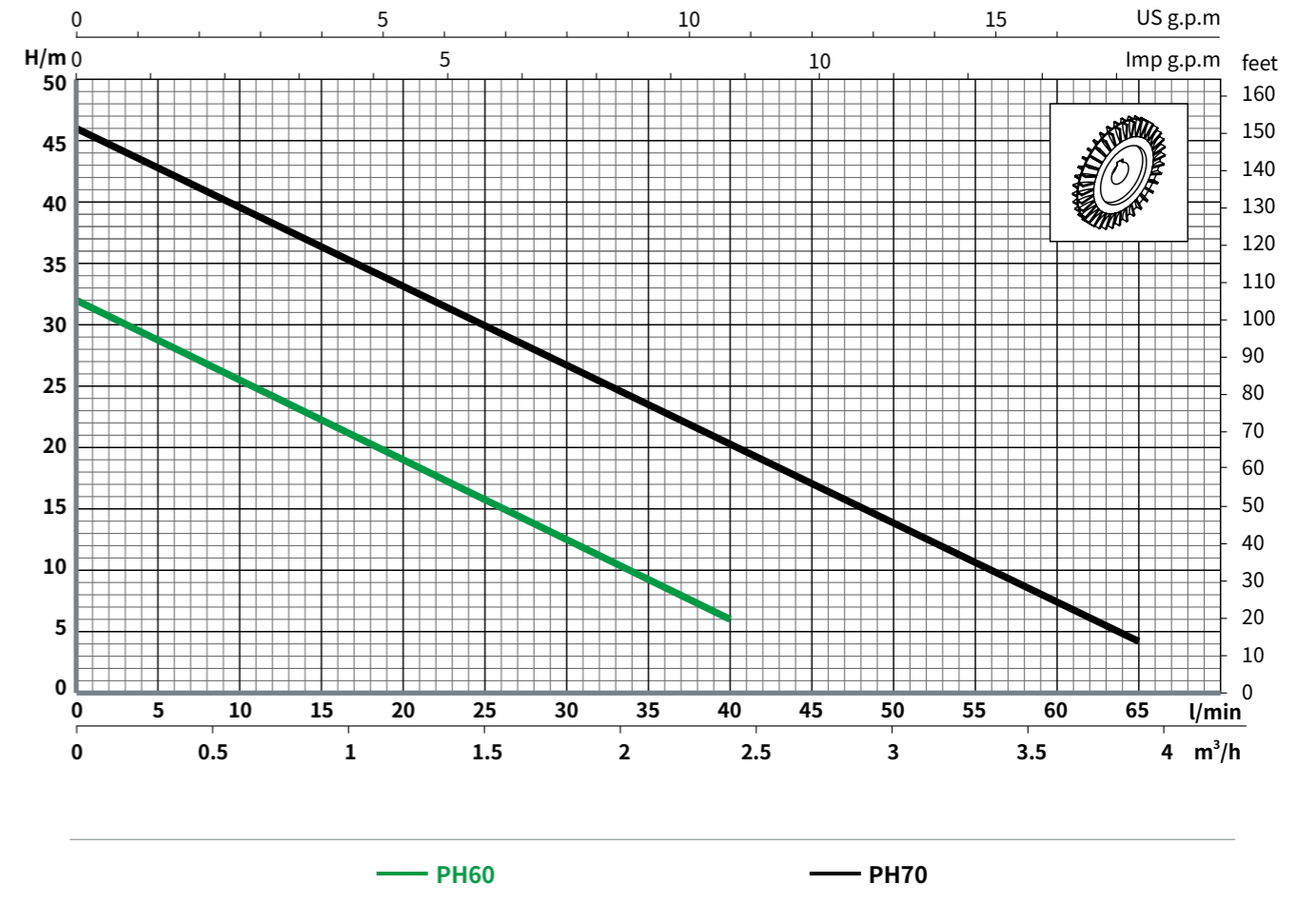


农业灌溉
Irrigation



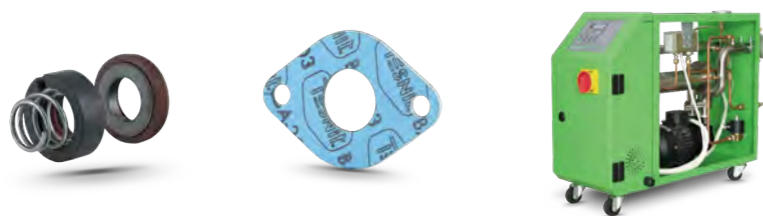
家庭使用
Household

性能曲线图 Performance Curve (n=2850 r/min)



PH

高温油泵
High Temperature Oil Pump



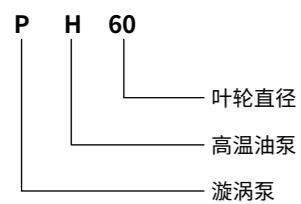
工作条件

- 可用于抽取、输送热油或汽水混合高温液体
- 流体温度: -10°C ~200°C
- 环境温度: < 45°C
- 最大承压值: 10 bar
- 可连续 24 小时不间断工作
- 绝缘等级: F 级
- 防护等级: IP44

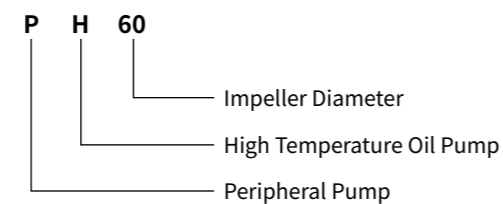
Working Conditions

- Hot oil or hot liquids without suspended solids
- Liquid temperature: -10°C ~200°C
- Ambient temperature: < 45°C
- Maximum pressure: 10 bar
- Continuous service S1
- Insulation: F
- Protection: IP44

型号定义



Model Definition

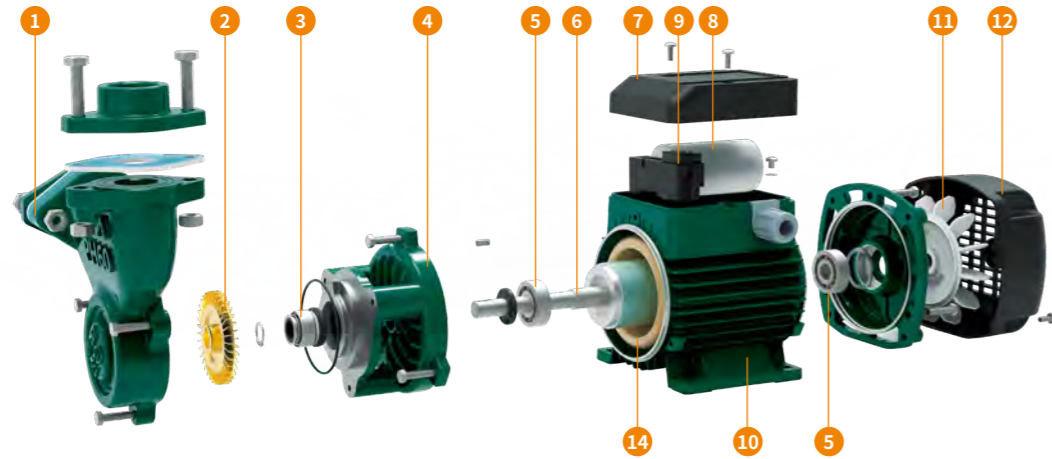


技术参数 Performance Data

型号 Model	功率 Power		Q																			
	单相 Single-phase	三相 Three-phase	kW	HP	m³/h	0	0.3	0.6	0.9	1.2	1.5	1.8	2.1	2.4	2.7	3.0	3.3	3.6	3.9			
				l/min	0	5	10	15	20	25	30	35	40	45	50	55	60	65				
PH60	PH60T		0.37	0.5		32	29	25.5	22	*19	*15.5	*12.5	*9	6								
PH70	PH70T		0.75	1		46	43	39.5	36	33	30	26.5	*23.5	*20.5	*17	*14	*10.5	7.5	4			

*: 水泵高效工作区间
*: High Efficiency Eta Of Pump

零部件分解图 Exploded View Of Main Component

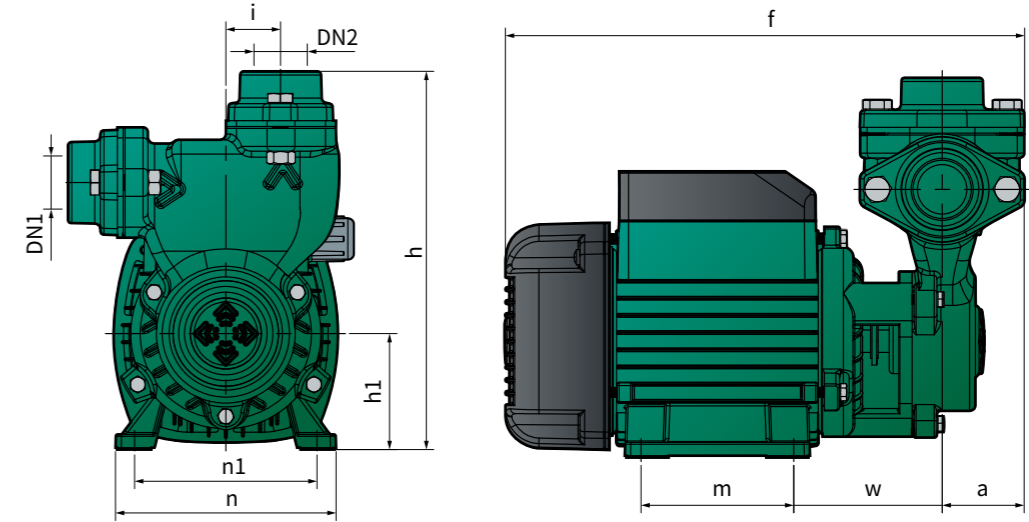


主零部件清单 List Of Main Component

● 标准配置 Standard Configuration ○ 可选择配置 Optional Configuration

序号 No.	零件名称 Component	规格 / 材质 / 结构说明 Specification/Construction Characteristics
1	泵体 Pump Body	灰铸铁 HT200, 电泳防锈处理 (耐盐雾试验 300 小时 +) Cast Iron HT200, Electro-coating Finished (Salt Spray Resistant Test For 300+ Hours)
2	叶轮 Impeller	● 铜叶轮 (含量 57%+) ○ 不锈钢叶轮 SUS304 ● Brass (H57%+) ○ Stainless Steel SUS304
3	机械密封 Mechanical Seal	浸渍石墨 + 碳化硅静环 + 聚四氟乙烯 Impregnation Graphite+SIC+Polyflon
4	前盖 Bracket	灰铸铁 HT200, 电泳防锈处理 (耐盐雾试验 300 小时 +) Cast Iron HT200, Electro-coating Finished (Salt Spray Resistant Test For 300+ Hours)
5	轴承 Ball Bearings	○ 标准型 ○ 人本 ● 台湾东培 ○ Standard Type ○ C&U ● TPI(Taiwan)
6	转子轴 Motor Shaft	● 焊接转子轴: 304 不锈钢 (水泵端) + 碳钢 (电机端) ● Welding Shaft: Stainless Steel 304 (Pump Side)+Carbon Steel (Motor Side)
7	接线盒 Terminal Box	ABS 塑料 Plastic ABS
8	电容器 Capacitor	● CBB60 塑壳电容 ○ CBB65 防爆电容 ○ 450VL@220-240V 电机 ○ 300VL@110-127V 电机 ● CBB60 Plastic Shell Capacitor ○ CBB65 Explosion-proof Capacitor ○ 450VL@220-240V Motor ○ 300VL@110-127V Motor
9	接线柱 Terminal Board	阻燃 PBT Flame Retarding PBT
10	机壳 Motor Housing	铝压铸 ADC12 合金铝 Aluminum ADC12
11	风叶 Fan	○ PP 塑料 ● 尼龙塑料 ○ Plastic PP ● Nylon PA6
12	风罩 Fan Cover	PP 塑料 Plastic PP
13	插头线 Plug Cord	● 国标三扁插 ○ 定制插头线 ○ 三芯测试线 ● 3 Core Testing Cable ○ Customized Cable Plug
14	电机 Motor	○ 标准铜线电机 ● 高效电机 ○ 经济版电机 ○ 三相电机 ○ 定制 60 赫兹电机 ○ Standard Copper Wire ● High Efficiency Motor ○ Economical Motor ○ 3-Phase Motor ○ Customized 60 HZ Motor

安装尺寸 Installation Dimensions



型号 Model	DN1	DN2	主要安装尺寸 Main Installation Dimensions(mm)								
			a	f	h	h1	i	m	n	n1	w
PH60	G1	G1	43	272	199	61	29	80	116	96	77.5
PH70	G1	G1	43	296	202	72	-	91	134	111	85

工作电流 Working Current

型号 Model	1~220V/50Hz	3~380V/50Hz
PH60	2.3A	1A
PH70	5.1	2A

包装箱信息 Packaging Information

型号 Model	净重 N.W (kg)	台数 / 箱 PCS/CTN	毛重 / 箱 G.W./CTN (kg)	尺寸 MEAS (cm)
PH60	6.85	1	7.35	28X22X26
PH70	10.65	1	11.15	30.5X18X26



工业循环
Industrial



热水工程
HVAC



设备配套
Equipment



农业灌溉
Irrigation



家庭使用
Household



J

自吸喷射泵 Self-priming Jet Pump



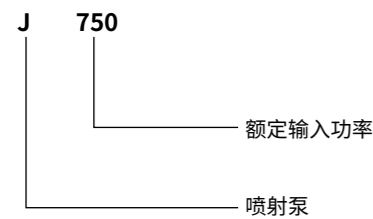
工作条件

- 可用于抽取、输送清水或类似水的液体
- 流体温度: 0°C ~60°C
- 环境温度: < 40°C
- 最大承压值: 10 bar
- 可连续 24 小时不间断工作
- 绝缘等级: B 级
- 防护等级: IP44

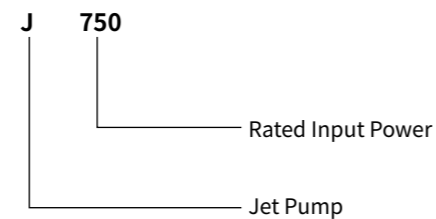
Working Conditions

- Clean liquids without suspended solids, non-aggressive
- Liquid temperature: 0°C ~60°C
- Ambient temperature: < 40°C
- Maximum pressure: 10 bar
- Continuous service S1
- Insulation: B
- Protection: IP44

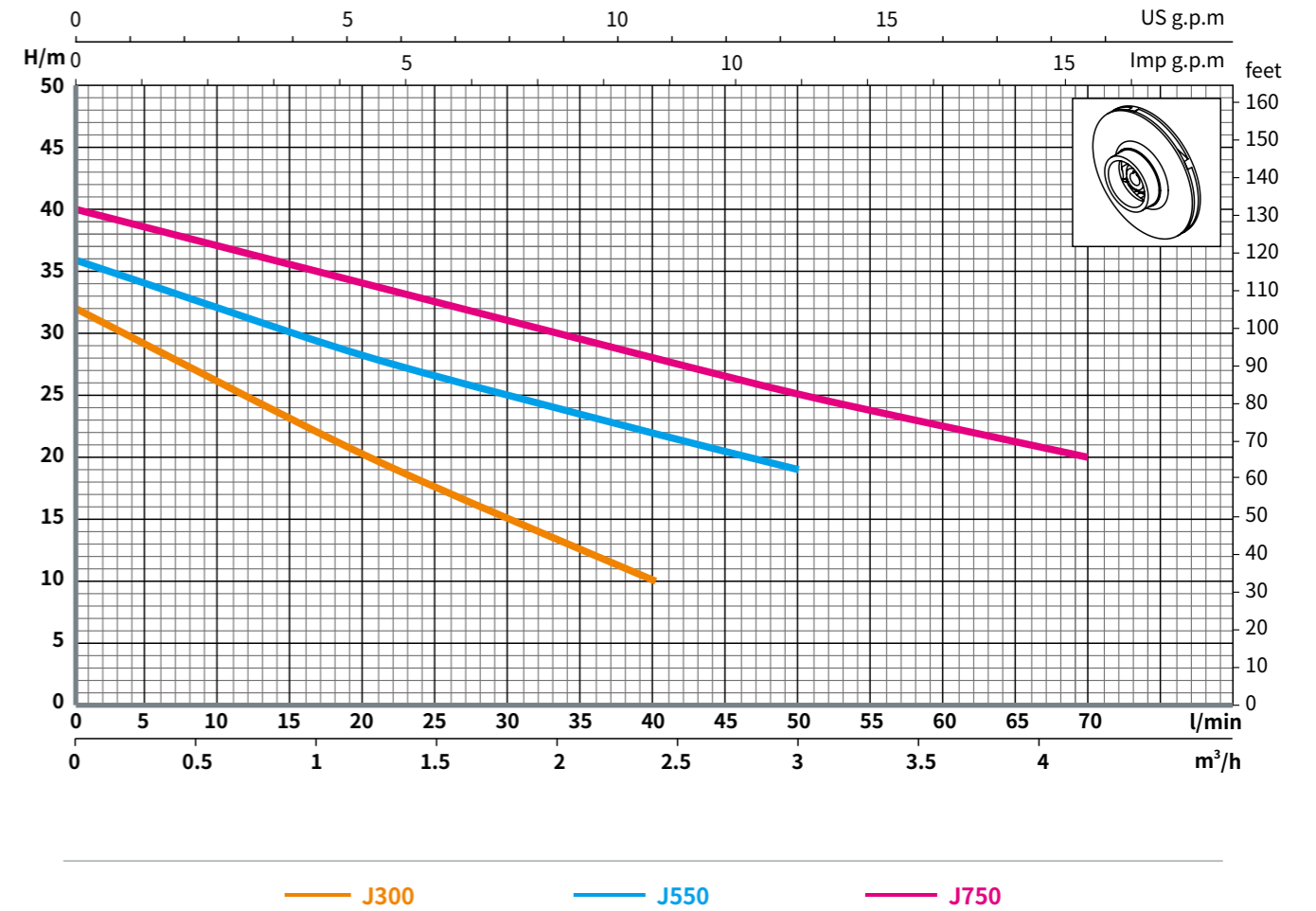
型号定义



Model Definition



性能曲线图 Performance Curve (n=2850 r/min)

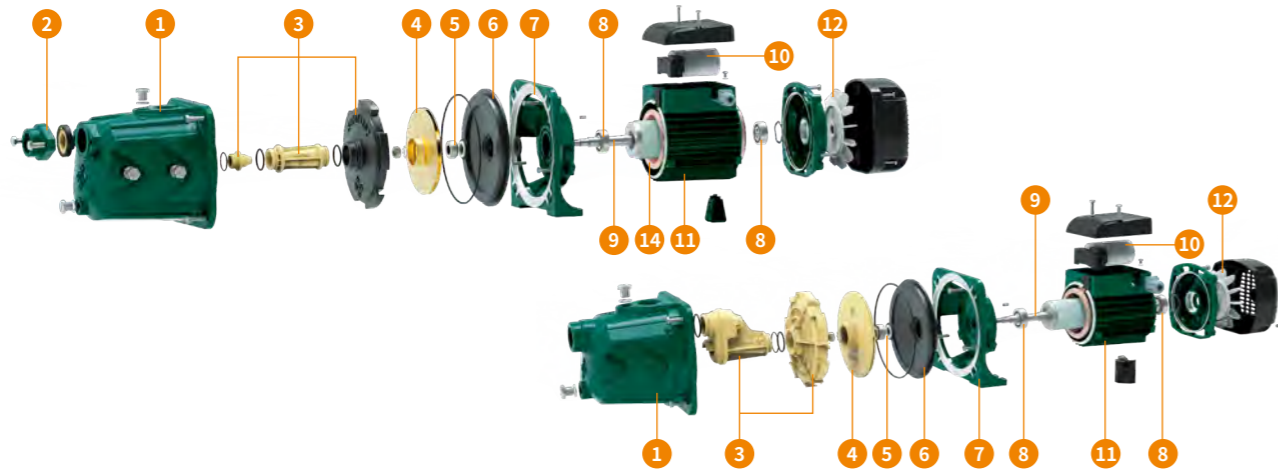


技术参数 Performance Data

型号 Model	功率 Power	Q	m³/h													
			0	0.6	1.2	1.8	2.4	3.0	3.6	4.2	4.8					
单相 Single-phase	三相 Three-phase	kW	HP	l/min												
				0	10	20	30	40	50	60	70	80				
J300	J300T	0.3	0.4	32	26	20	*15	*10								
J550	J550T	0.55	0.75	H	m	36	32	28	25	*22	*19					
J750	J750T	0.75	1			40	37	34	31	28	*25	*22.5	*20			

*: 水泵高效工作区间
*: High Efficiency Eta Of Pump

零部件分解图 Exploded View Of Main Component

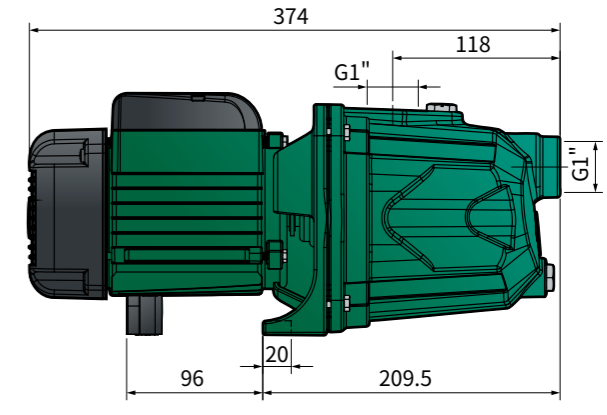
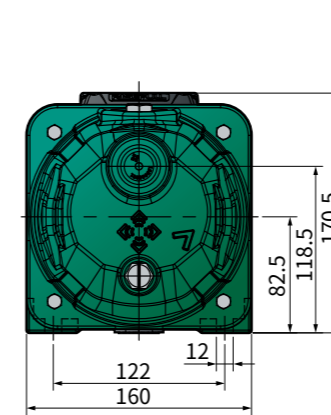


主零部件清单 List Of Main Component

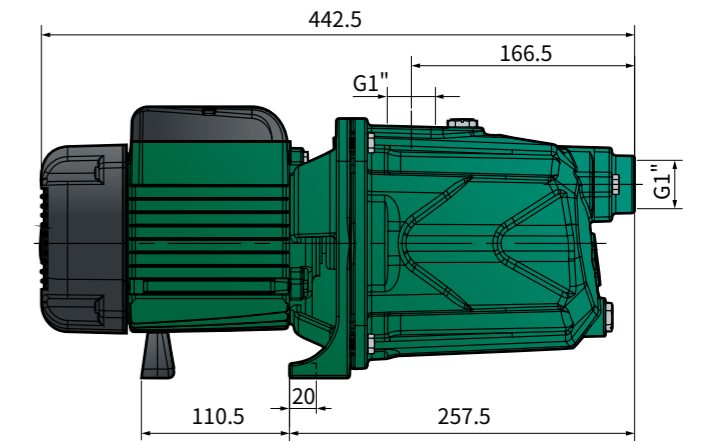
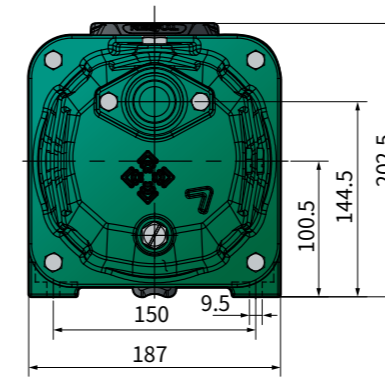
● 标准配置 Standard Configuration ○ 可选择配置 Optional Configuration

序号 No.	零件名称 Component	规格 / 材质 / 结构说明 Specification/Construction Characteristics
1	泵体 Pump Body	灰铸铁 HT200, 铁红防锈漆 Cast Iron HT200
2	进水法兰 Inlet Flange	灰铸铁 HT200, 内嵌橡胶止回阀 (三元乙丙) Cast Iron HT200, Rubber Check-valve Inside(EPDM)
3	射流器 Venturri Kit	PPO (高等级耐温 150°C) + 铸铁导流盘 (电泳防锈处理) * J300: PPO 连体套件 (高等级耐温 150°C), 内置橡胶止回阀; PPO+Cast Iron HT200 (Electro-coating Finished * J300: Siamese Venturri Kit in PPO, Rubber Check-valve Inside(NBR)
4	叶轮 Impeller	<input checked="" type="radio"/> 铜叶轮 (含量 58%+) <input type="radio"/> PPO 叶轮 (高等级耐温 150°C) <input type="radio"/> 不锈钢叶轮 (SUS304 冲压焊接) <input checked="" type="radio"/> Brass (H58%+) <input type="radio"/> PPO (High Temperature Resistant for 150°C) <input type="radio"/> Stainless Steel (SUS304 Stamping & Welding)
5	机械密封 Mechanical Seal	<input checked="" type="radio"/> 301 款 (压制石墨 + 陶瓷) <input type="radio"/> CN 款 (压制石墨 + 陶瓷, 特殊结构满足频繁启停工况) <input type="radio"/> 14DIN 款 (呋喃浸渍石墨 + 碳化硅静环, 设计寿命 25000 小时) <input checked="" type="radio"/> 301 Type (Karbate Impervious Graphite+Ceramic) <input type="radio"/> CN Type (Karbate Impervious Graphite+Ceramic, Special Construction Stand For Start-stop Frequently) <input type="radio"/> 14DIN Type (Furan Impregnation Graphite+SIC, Use Life 25,000+ Hours)
6	前盖盘 Bracket Plate	<input checked="" type="radio"/> 灰铸铁 HT200, 电泳防锈处理 (耐盐雾试验 300 小时 +) <input checked="" type="radio"/> Cast Iron HT200, Electro-coating Finished (Salt Spray Resistant Test For 300+ Hours)
7	前盖 Bracket	灰铸铁 HT200 Cast Iron HT200
8	轴承 Ball Bearings	<input checked="" type="radio"/> 标准型 <input type="radio"/> 人本 <input type="radio"/> 台湾东培 <input checked="" type="radio"/> Standard Type <input type="radio"/> C&U <input type="radio"/> TPI(Taiwan)
9	转子轴 Motor Shaft	焊接转子轴: 304 不锈钢 (水泵端) + 碳钢 (电机端) Welding Shaft: Stainless Steel 304 (Pump Side)+Carbon Steel (Motor Side)
10	电容器 Capacitor	<input checked="" type="radio"/> CBB60 塑壳电容 <input type="radio"/> CBB65 防爆电容 <input type="radio"/> 450VL@220-240V 电机 <input type="radio"/> 300VL@110-127V 电机 <input checked="" type="radio"/> CBB60 Plastic Shell Capacitor <input type="radio"/> CBB65 Explosion-proof Capacitor <input type="radio"/> 450VL@220-240V Motor <input type="radio"/> 300VL@110-127V Motor
11	机壳 Motor Housing	铝压铸 ADC12 合金铝 Aluminum ADC12
12	风叶 Fan	<input checked="" type="radio"/> PP 塑料 <input type="radio"/> 尼龙塑料 <input checked="" type="radio"/> Plastic PP <input type="radio"/> Nylon PA6
13	插头线 Plug Cord	<input checked="" type="radio"/> 国标三扁插 <input type="radio"/> 定制插头线 <input type="radio"/> 三芯测试线 <input checked="" type="radio"/> 3 Core Testing Cable <input type="radio"/> Customized Cable Plug
14	电机 Motor	<input checked="" type="radio"/> 标准铜线电机 <input type="radio"/> 高效电机 <input type="radio"/> 经济版电机 <input type="radio"/> 三相电机 <input type="radio"/> 定制 60 赫兹电机 <input checked="" type="radio"/> Standard Copper Wire <input type="radio"/> High Efficiency Motor <input type="radio"/> Economical Motor <input type="radio"/> 3-Phase Motor <input type="radio"/> Customized 60 HZ Motor

安装尺寸 Installation Dimensions



J300



J750

工作电流 Working Current

型号 Model	1~220V/50Hz	3~380V/50Hz
J300	2A	0.9A
J550	3.6A	1.4A
J750	5A	1.8A

包装箱信息 Packaging Information

型号 Model	净重 N.W (kg)	台数 / 箱 PCS/CTN	毛重 / 箱 G.W./CTN (kg)	尺寸 MEAS (cm)
J300	9.30	1	9.75	38X17X12
J550	15.75	1	16.45	45X20X23
J750	17.50	1	18.00	45X20X23
J1100	17.80	1	18.35	45X20X23



工业循环
Industrial



热水工程
HVAC



设备配套
Equipment



农业灌溉
Irrigation



家庭使用
Household



GD

立式管道泵
In Line Pump

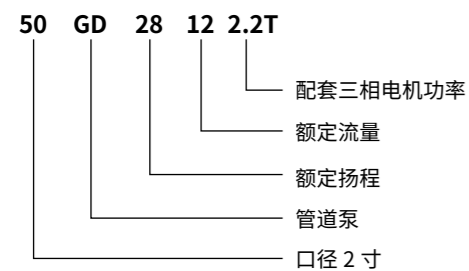
工作条件

- 可用于抽取、输送清水或类似水的液体
- 流体温度: 0°C ~90°C
- 环境温度: < 40°C
- 最大承压值: 10 bar
- 可连续 24 小时不间断工作
- 绝缘等级: F 级
- 防护等级: IP54

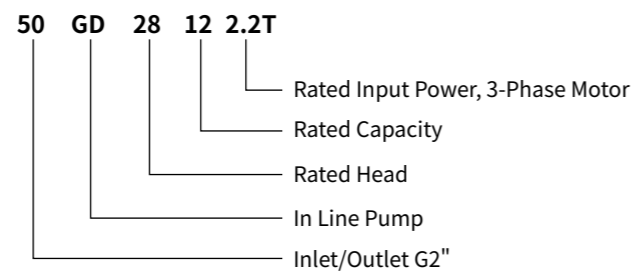
Working Conditions

- Clean liquids without suspended solids, non-aggressive
- Liquid temperature: 0°C ~90°C
- Ambient temperature: < 40°C
- Maximum pressure: 10 bar
- Continuous service S1
- Insulation:F
- Protection: IP54

型号定义



Model Definition



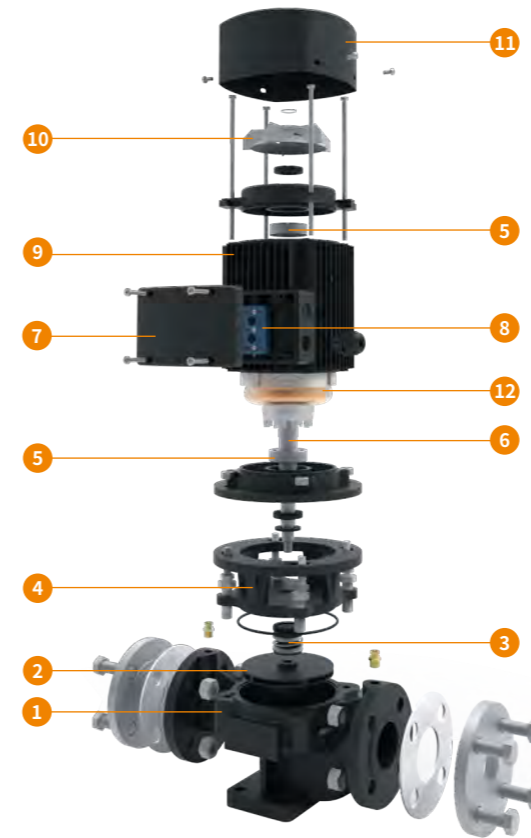
技术参数 Performance Data

型号 Model	叶轮直径 Impeller Diameter	额定流量 Rated Capacity Q/m ³ /h	额定扬程 Rated Head H(m)	效率 Efficiency (%)	转速 RPM (r/min)	电机功率 Motor Power (Kw)	汽蚀余量 NPSH (M)	进出口径 Inlet/Outlet
40GD16-11-1.1T	125	8/11/14.5	17/16/14	47/57/54	2900	1.1	2.3	40
40GD20-6.3-1.1T	125	4.4/6.3/8.3	21/20/18	41/46/43	2900	1.1	2.3	40
40GD20-12.6-1.5T	125	8.8/12.6/16.3	21.2/20/17.8	49/58/57	2900	1.5	2.3	40
40GD28-5.9-1.5T	160	4.1/5.9/7.8	29/28/26.3	34/39/39	2900	1.5	2.3	40
40GD28-11.7-2.2T	160	8.2/11.7/15.2	29/28/26	44/41/50	2900	2.2	2.3	40
40GD36-5.3-2.2T	200	3.7/5.3/7	38/36/34.5	23/29/27	2900	2.2	2.3	40
40GD32-12.5-3T	160	8.8/12.5/16.3	33/32/30	45/52/51	2900	3	2.3	40
40GD36-10.6-3T	200	7.5/10.6/13.8	37/36/34	35/44/42	2900	3	2.3	40
40GD44-5.9-3T	200	4.1/5.9/7.8	45/44/42	26/31/30	2900	3	2.3	40
40GD44-11.7-4T	200	8.3/11.7/15.3	45/44/42	37/45/45	2900	4	2.3	40
40GD50-6.3-4T	200	4.4/6.3/8.3	51/50/48	26/33/32	2900	4	2.3	40
40GD60-5.5-4T	250	3.8/5.5/7	61.5/60/56	23/27/26	2900	4	2.3	40
40GD50-12.5-5.5T	200	8.8/12.5/16.3	51.2/50/48	38/46/46	2900	5.5	2.3	40
40GD70-5.9-5.5T	250	4.1/5.9/7.8	72/70/65	24/28/27	2900	5.5	2.3	40
40GD70-11.6-7.5T	250	8.2/11.6/15.2	71/70/68	28/38/39	2900	7.5	2.3	40
40GD80-6.3-7.5T	250	4.4/6.3/8.3	82/80/74	24/28/28	2900	7.5	2.3	40
50GD16-11-1.1T	125	8/11/14.5	17/16/14	47/57/54	2900	1.1	2.3	50
50GD10-22.3-1.1T	100	15.6/22.3/29	11/10/8.4	65/67/68	2900	1.1	2.3	50
50GD20-12.5-1.5T	125	8.8/12.5/16.3	21.5/20/17.8	49/58/57	2900	1.5	2.3	50
50GD12.5-25-1.5T	100	17.5/25/32.5	13.7/12.5/10.5	67/69/69	2900	1.5	2.5	50
50GD28-11.7-2.2T	160	8.2/11.7/15.2	29/28/26	44/51/50	2900	2.2	2.3	50
50GD16-22.3-2.2T	125	15.6/22.3/29	17/16/13.6	58/66/65	2900	2.2	2.5	50
50GD32-12.5-3T	160	8.8/12.5/16.3	33/32/30	45/52/51	2900	3	2.3	50
50GD20-25-3T	125	17.5/25/32.5	21.5/20/18	60/68/67	2900	3	2.5	50
50GD24-21.6-3T	160	15/21.6/28	26/24/20.6	49/58/54	2900	3	2.5	50
50GD44-11.7-4T	200	8.3/11.7/15.3	45.8/44/42	37/45/45	2900	4	2.3	50
50GD32-25-4T	160	17.5/25/32.5	34.4/32/27.5	54/63/60	2900	4	2.5	50
50GD28-23.4-4T	160	16.4/23.4/30.4	30/28/24	54/62/59	2900	4	2.5	50
50GD50-12.5-5.5T	200	8.8/12.5/16.3	52/50/48	38/46/46	2900	5.5	2.3	50
50GD38-21.8-5.5T	200	15.2/21.8/28.3	40/38/34.5	45/55/55	2900	5.5	2.5	50
50GD70-11.6-7.5T	250	8.2/11.6/15.2	71.5/70/68	28/38/39	2900	7.5	2.3	50
50GD50-25-7.5T	200	17.5/25/32.5	52.7/50/45.5	49/58/59	2900	7.5	2.5	50
50GD44-23.5-7.5T	200	16.4/23.5/30.5	46.4/44/40	48/57/58	2900	7.5	2.5	50
65GD10-22.3-1.1T	100	15.6/22.3/29	11/10/8.4	65/67/68	2900	1.1	2.5	65
65GD12.5-25-1.5T	100	17.5/25/32.5	13.7/12.5/10.5	67/69/69	2900	1.5	2.5	65
65GD10-44.7-2.2T	100	32.3/44.7/58	20/11/10/8	66/72/69	2900	2.2	3	65
65GD16-22.3-2.2T	125	15.6/22.3/29	17/16/14.4	58/66/65	2900	2.2	2.5	65
65GD12.5-50-3T	100	35/50/65	13.8/12.5/10	67/73/70	2900	3	3	65
65GD20-25-3T	125	17.5/25/32.5	21.5/20/18	60/68/67	2900	3	2.5	65
65GD24-21.6-3T	160	15/21.6/28	26/24/20.6	49/58/54	2900	3	2.5	65
65GD16-45-4T	125	31.3/45/58	17.5/16/13.6	66/71/69	2900	4	3	65
65GD32-25-4T	160	17.5/25/32.5	34.4/32/27.5	54/63/60	2900	4	2.5	65
65GD28-23.4-4T	160	16.4/23.4/30.4	30/28/24	54/63/59	2900	4	2.5	65

技术参数 Performance Data

型号 Model	叶轮直径 Impeller Diameter	额定流量 Rated Capacity Q/m ³ /h	额定扬程 Rated Head H(m)	效率 Efficiency (%)	转速 RPM (r/min)	电机功率 Motor Power (Kw)	汽蚀余量 NPSH (M)	进出口径 Inlet/Outlet
65GD20-50-5.5T	125	35/50/65	22/20/17	67/72.5/70	2900	5.5	3	65
65GD38-21.8-5.5T	200	15.2/21.8/28.3	40/38/34.5	45/55/55	2900	5.5	2.5	65
65GD32-50-7.5T	160	35/50/65	35/32/28	63/71/70	2900	7.5	3	65
65GD38-43.5-7.5T	200	30.5/43.5/56.6	40.6/38/33.4	52/65/65	2900	7.5	3	65
65GD50-25-7.5T	200	17.5/25/32.5	52.7/50/45.5	49/58/59	2900	7.5	2.5	65
65GD44-23.5-7.5T	200	16.4/23.5/30.5	46.4/44/40	48/57/58	2900	7.5	2.5	65
65GD44-47-11T	200	32.8/47/61	47/44/40	54/66/67	2900	11	3	65
65GD70-23.4-11T	250	16.4/23.4/30.5	17.5/70/67	39/50/52	2900	11	2.5	65
65GD60-21.6-11T	250	15/21.6/28	61/60/57.4	38/49/54	2900	11	2.5	65
65GD80-25-15T	250	17.5/25/32.5	82/80/76.5	39/50/52	2900	15	2.5	65
65GD50-50-15T	200	35/50/65	53.5/50/46	55/67/68	2900	15	3	65
65GD60-43.3-15T	250	30/43.3/56	62/60/54	50/58/58	2900	15	3	65
65GD85-20.6-15T	315	14.4/20.6/26.8	86/85/83	28/38/40	2900	15	2.5	65
80GD10-44.7-2.2T	100	31.3/44.7/58	2011/10/8	66/72/69	2900	2.2	3	80
80GD12.5-50-3T	100	35/50/65	13.8/12.5/10	67/73/70	2900	3	3	80
80GD16-45-4T	125	31.3/45/58	17.5/16/13.6	66/71/69	2900	4	3	80
80GD10-89-4T	100	62.6/89/116	11/10/8.8	70/76/65	2900	4	4.5	80
80GD12.5-100-5.5T	100	70/100/130	13.6/12.5/11	66/74/75	2900	5.5	4.5	80
80GD20-50-5.5T	125	35/50/65	22/20/17	67/72.5/70	2900	5.5	3	80
80GD24-43.3-5.5T	160	30.3/43.3/56.3	26/24/21	60/69/67	2900	5.5	3	80
80GD32-50-7.5T	160	35/50/65	35/32/28	63/71/70	2900	7.5	3	80
80GD16-89-7.5T	125	62.6/89/116	19/16/11	65/72/64	2900	7.5	4.5	80
80GD38-43.5-7.5T	200	30.5/43.5/56.6	40.6/38/33.4	52/65/65	2900	7.5	3	80
80GD28-46.7-7.5T	160	32.7/46.7/61	30.6/28/24	62/70/69	2900	7.5	3	80
80GD20-100-11T	125	70/100/130	23.5/20/14	68/72/64	2900	11	4.5	80
80GD24-86.6-11T	160	60.6/86.6/112.5	27/24/18	65/72/64	2900	11	4.5	80
80GD28-93.5-11T	160	65.4/93.5/121.6	32/28/21	68/74/67	2900	11	4.5	80
80GD44-47-11T	200	32.8/47/61	47/44/40	55/66/67	2900	11	3	80
80GD32-100-15T	160	70/100/130	36.5/32/24	65/74/73	2900	15	4.5	80
80GD38-87-15T	200	61/87/113	41/38/32	61/71/69	2900	15	4.5	80
80GD50-50-15T	200	35/50/65	53.5/50/46	55/67/68	2900	15	3	80
80GD60-43.3-15T	250	30/43.3/56	62/60/54	50/58/58	2900	15	3	80
100GD10-89-4T	100	62.6/89/116	11/10/8.8	64/74/74	2900	4	4.5	100
100GD-16-89-7.5T	125	62.6/89/116	19/16/11	68/74/63	2900	7.5	4.5	100
100GD24-86.6-7.5T	160	60.6/86.6/112.5	27/24/18	66/72/64	2900	7.5	4.5	100
100GD20-100-11T	125	70/100/130	23.5/20/14	70/76/65	2900	11	4.5	100
100GD28-93.5-11T	160	65.4/93.5/121.6	32/28/21	68/74/67	2900	11	4.5	100
100GD32-100-15T	160	70/100/130	36.5/32/24	70/76/65	2900	15	4.5	100
100GD38-87-15T	200	61/87/113	41/38/32	62/71/69	2900	15	4	100
125GD12.5-160-11T	100	96/160/192	13/12.5/12	63/80/76	2900	11	4	125
125GD16-143-11T	125	86/143/172	18/16/13.6	60/76/76	2900	11	4	125
125GD20-160-15T	125	96/160/192	22.6/20/17	62/78/78	2900	15	4	125
125GD24-138-15T	160	86/138/166	27/24/21	58/73/60	2900	15	4	125

零部件分解图 Exploded View Of Main Component

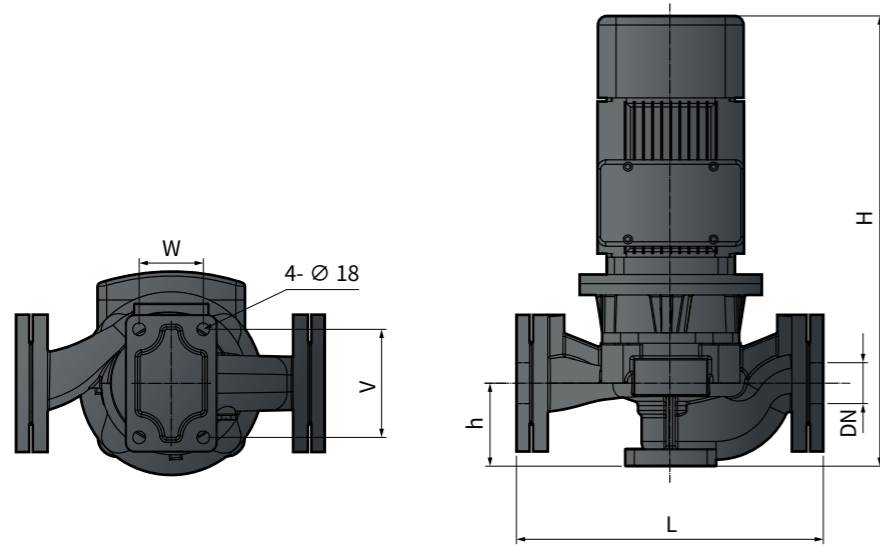


主零部件清单 List Of Main Component

● 标准配置 Standard Configuration ○ 可选择配置 Optional Configuration

序号 No.	零件名称 Component	规格 / 材质 / 结构说明 Specification/Construction Characteristics
1	泵体 Pump Body	灰铸铁 HT200, 电泳防锈处理 (耐盐雾试验 300 小时+) Cast Iron HT200, Electro-coating Finished (Salt Spray Resistant Test For 300+ Hours)
2	叶轮 Impeller	灰铸铁 HT200, 电泳防锈处理 (耐盐雾试验 300 小时+) Cast Iron HT200, Electro-coating Finished (Salt Spray Resistant Test For 300+ Hours)
3	机械密封 Mechanical Seal	19BND 款 (呋喃浸渍石墨 + 碳化硅静环, 设计寿命 25000 小时) 19BND Type (Furan Impregnation Graphite+SIC, Use Life 25,000+ Hours)
4	前盖 Bracket	灰铸铁 HT200, 电泳防锈处理 (耐盐雾试验 300 小时+) Cast Iron HT200, Electro-coating Finished (Salt Spray Resistant Test For 300+ Hours)
5	轴承 Ball Bearings	● 台湾东培 ○ 人本 ● TPI(Taiwan) ○ C&U
6	转子轴 Motor Shaft	焊接转子轴: 304 不锈钢 (水泵端) + 碳钢 (电机端) Welding Shaft: Stainless Steel 304 (Pump Side)+Carbon Steel (Motor Side)
7	接线盒 Terminal Box	铝压铸 ADC12 合金铝 Aluminum ADC12
8	接线柱 Terminal Board	阻燃 PBT Flame Retarding PBT
9	机壳 Motor Housing	铝压铸 ADC12 合金铝 Aluminum ADC12
10	风叶 Fan	尼龙塑料 Nylon PA6
11	风罩 Fan Cover	拉伸铁风罩 Tensile Steel Plate
12	电机 Motor	● 国标 Y2 电机 ○ 定制 60 赫兹电机 ● IE2 Motor ○ Customized 60 HZ Motor

安装尺寸 Installation Dimensions



型号 Model	外观尺寸 External Dimension (mm)						包装尺寸 Packing Size (cm)			重量 weight (kg)
	L	H	h	V	W	DN	长 Long	宽 Wide	高 High	
40GD16-11-1.1T	339	415	95	120	70	40				34.8
40GD20-6.3-1.1T	314	410	90	120	70	40				34.5
40GD20-12.6-1.5T	339	430	95	120	70	40	55	36	41.5	39.5
40GD28-5.9-1.5T	352	420	85	120	70	40				38.6
40GD28-11.7-2.2T	352	445	85	120	70	40				41.2
40GD36-5.3-2.2T	372	470	94	130	80	40				40.4
40GD32-12.5-3T	359	505	100	130	80	40				54.7
40GD36-10.6-3T	394	500	100	130	80	40				55.2
40GD44-5.9-3T	372	495	94	130	80	40	63	43	46	54.6
40GD44-11.7-4T	394	530	100	130	80	40				62
40GD50-6.3-4T	372	525	94	130	80	40				62.8
40GD60-5.5-4T	439	535	100	130	80	40				64
40GD50-12.5-5.5T	394	580	100	130	80	40				85
40GD70-5.9-5.5T	439	580	100	130	80	40	71	52	49	85.6
40GD70-11.6-7.5T	474	585	100	160	100	40				90.2
40GD80-6.3-7.5T	439	580	100	130	80	40				91.4
50GD16-11-1.1T	329	415	100	120	70	50				35.4
50GD10-22.3-1.1T	344	425	95	160	100	50				40.8
50GD20-12.5-1.5T	329	430	100	120	70	50	55	36	41.5	38.7
50GD12.5-25-1.5T	344	440	95	160	100	50				41.4
50GD28-11.7-2.2T	354	465	100	130	80	50				44.4
50GD16-22.3-2.2T	379	510	105	160	100	50				46.8
50GD32-12.5-3T	354	505	100	130	80	50				48
50GD20-25-3T	379	480	100	160	100	50				55.8
50GD24-21.6-3T	394	510	110	160	100	50	63	43	46	59.5
50GD44-11.7-4T	374	530	100	130	80	50				50
50GD32-25-4T	394	540	110	160	100	50				63.5
50GD28-23.4-4T	394	540	110	160	100	50				51.3
50GD50-12.5-5.5T	374	580	100	130	80	50				86.2
50GD38-21.8-5.5T	424	595	105	160	100	50				87
50GD70-11.6-7.5T	474	595	105	160	100	50	71	52	49	91.4
50GD50-25-7.5T	424	595	105	160	100	50				91.8
50GD44-23.5-7.5T	424	595	105	160	100	50				91.3

安装尺寸 Installation Dimensions

型号 Model	外观尺寸 External Dimension (mm)						包装尺寸 Packing Size (cm)			重量 weight (kg)
	L	H	h	V	W	DN	长 Long	宽 Wide	高 High	
65GD10-22.3-1.1T	359	455	95	160	100	65				42
65GD12.5-25-1.5T	359	495	95	160	100	65				44.3
65GD10-44.7-2.2T	434	495	130	160	100	65	55	36	41.5	54.5
65GD16-22.3-2.2T	369	480	102	160	100	65				47.6
65GD12.5-50-3T	434	535	130	160	100	65				48
65GD20-25-3T	369	480	102	160	100	65				56.8
65GD24-21.6-3T	399	510	105	160	100	65				66
65GD16-45-4T	434	600	120	160	100	65	63	43	46	65.3
65GD32-25-4T	394	570	105	160	100	65				63.3
65GD28-23.4-4T	399	540	105	160	100	65				66.8
65GD20-50-5.5T	434	600	120	160	100	65				87
65GD38-21.8-5.5T	429	595	105	160	100	65				87.6
65GD32-50-7.5T	439	595	120	160	100	65	71	52	49	91.6
65GD38-43.5-7.5T	489	600	135	160	100	65				91.8
65GD50-25-7.5T	429	595	105	160	100	65				91.5
65GD44-23.5-7.5T	429	595	105	160	100	65				91.5
65GD44-47-11T	489	715	135	160	100	65				166.2
65GD70-23.4-11T	509	695	120	180	120	65				165.5
65GD60-21.6-11T	509	695	120	180	120	65				165.8
65GD80-25-15T	519	695	120	180	120	65	83	63	67	176
65GD50-50-15T	489	715	135	160	100	65				176
65GD60-43.3-15T	519	705	130	180	120	65				176
65GD85-20.6-15T	584	705	130	180	120	65				176
80GD10-44.7-2.2T	436	495	130	160	100	80				55
80GD12.5-50-3T	436	535	130	160	100	80				63
80GD16-45-4T	431	600	125	160	100	80	63	43	46	67.75
80GD10-89-4T	496	575	140	180	120	80				79.8
80GD12.5-100-5.5T	496	615	140	180	120	80				92
80GD20-50-5.5T	431	600	125	160	100	80				88.4
80GD24-43.3-5.5T	433	595	130	160	100	80				88.15
80GD32-50-7.5T	431	595	130	160	100	80	71	52	49	93
80GD16-89-7.5T	476	615	150	180	120	80				92.8
80GD38-43.5-7.5T	466	615	125	160	100	80				93.5
80GD28-46.7-7.5T	433	595	130	160	100	80				92.1
80GD20-100-11T	478	715	150	180	120	80				167
80GD24-86.6-11T	538	730	150	180	120	80				167
80GD28-93.5-11T	538	730	150	180	120	80				167
80GD44-47-11T	468	715	125	160	100	80				167
80GD32-100-15T	538	730	150	180	120	80	83	63	67	177
80GD38-87-15T	513	710	135	180	120	80				177
80GD50-50-15T	468	715	125	160	100	80				177
80GD60-43.3-15T	518	705	125	180	120	80				177
100GD10-89-4T	493	575	140	180	120	100				71
100GD16-89-7.5T	473	615	140	180	120	100	71	52	49	97.8
100GD24-86.6-7.5T	533	730	150	180	120	100				98
100GD20-100-11T	473	715	140	180	120	100				177
100GD28-93.5-11T	533	730	150	180	120	100				177
100GD32-100-15T	533	730	150	180	120	100				187
100GD38-87-15T	513	710	135	180	120	100				187
125GD12.5-160-11T	558	715	140	180	120	125	83	63	67	177
125GD16-143-11T	558	715	140	180	120	125				177
125GD20-160-15T	558	715	140	180	120	125				187
125GD24-138-15T	558	745	170	225	140	125				187



压力模式
Pressure



定时模式
Timing



水流模式
Flow

PC31

三合一智能水泵控制器 3in1 Pump Controller



转换插座
Adapter Socket

尼龙转接
Nylon Connector

工作条件

- 电压: 200-240V, 50/60HZ
- 最大功率: 1.3 KW
- 最大电流: 10 A
- 防护等级: IP54
- 最大承压: 10 BAR
- 最高水温: 80°C
- 最高环境温度: 40°C
- 进出水口: 外芽 1"x1"

Working Conditions

- Voltage: 200-240V, 50/60Hz
- Max input: 1.3kW
- Max a.: 10A
- P.: IP54
- Max pressure: 10 bar
- Max water temp.: 80°C
- Max ambient temp.: 40°C
- Inlet/outlet: Male 1"x1"

三种控制模式

- **压力模式**
低压启动, 水流感应停止
用途最广泛的管理增压模式
- **定时模式**
倒计时启动, 水流感应停止
专门用于水塔补水, 无需频繁启动水泵,
节能并增加水泵使用寿命
- **水流模式**
水流感应启动和停止
专门用于楼顶向下增压, 可避免小泄露导致的
频繁启停, 建议匹配离心泵, 高效静音

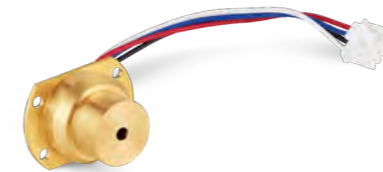
Three Control Modes

- **Pressure Mode**
Start parameter:Low pressure value, Stop parameter:Flow value
Most widely used mode.
- **Timing Mode**
Start parameter:Countdown time, Stop parameter:Flow value
Used for filling water tank (water tower)
Save energy and longer pump uselife
- **Flow Mode**
Start & stop parameter:Flow value
Used for down pressurization
Avoid start & stop frequently due to small leakage .
Propose to use the centrifugal pump (High efficient & silence)

多重传感器保障您的舒适用水体验

Multi-Sensor Ensure Your Comfortable Using Experience

精确实时的传感系统能更好的适应各种不同的用水环境
Accurate And Timely Sensor System Enhance Adapting
Different Application



压力 / 温度二合一传感器
Pressure &temperature 2 in 1 sensor
精确读数, 实时数显
Accurate Reading, Timely Digital Display



电子流量传感器
Electronic Flow Sensor

读取精度 2.5L/分
The Reading Accuracy Is 2.5L/min



转换插座: 快速接线

Adapter Socket For Quick Link

即插即用, 避免接线错误
万能插座兼容多种插头

Plug and Play Mode To Avoid Wiring Error
Universal Socket Can Be Matching
Various Plugs

○ 选配 Optional



尼龙转接: 快速安装

Nylon Connector For Quick Install

安装简单迅捷
控制器可朝向任意角度
内置止回阀

Quick and Simple Installation
Can Be Installed In Any
Direction
With Inner Valve

● 标配 Standard

