

JRC

Voyage Data Recorder (VDR)

JCY-1000

U.K. Type-Approved

Voyage Data Recorder



Japan Radio Co., Ltd.

The Voyage Data Recorder(VDR) is a so-called black box, recording navigational information, bridge communications, VHF communications and radar pictures. The recorded data is used to analyze causes of an accident such as collision, grounding or sinking.

The SOLAS*¹ obligates to carry VDR for all passenger ships built on and after July 1, 2002 in international voyage, all other international ships such as cargo carrier or tankers over 3,000GT, and the existing passenger ships*² in international voyage.

* 1 SOLAS : International Convention for the Safety Of Life At Sea

* 2 Deadline for carriage: Regular inspection after July 1, 2002 for the existing RO/RO passenger ships, and January 1, 2004 for general passenger ships

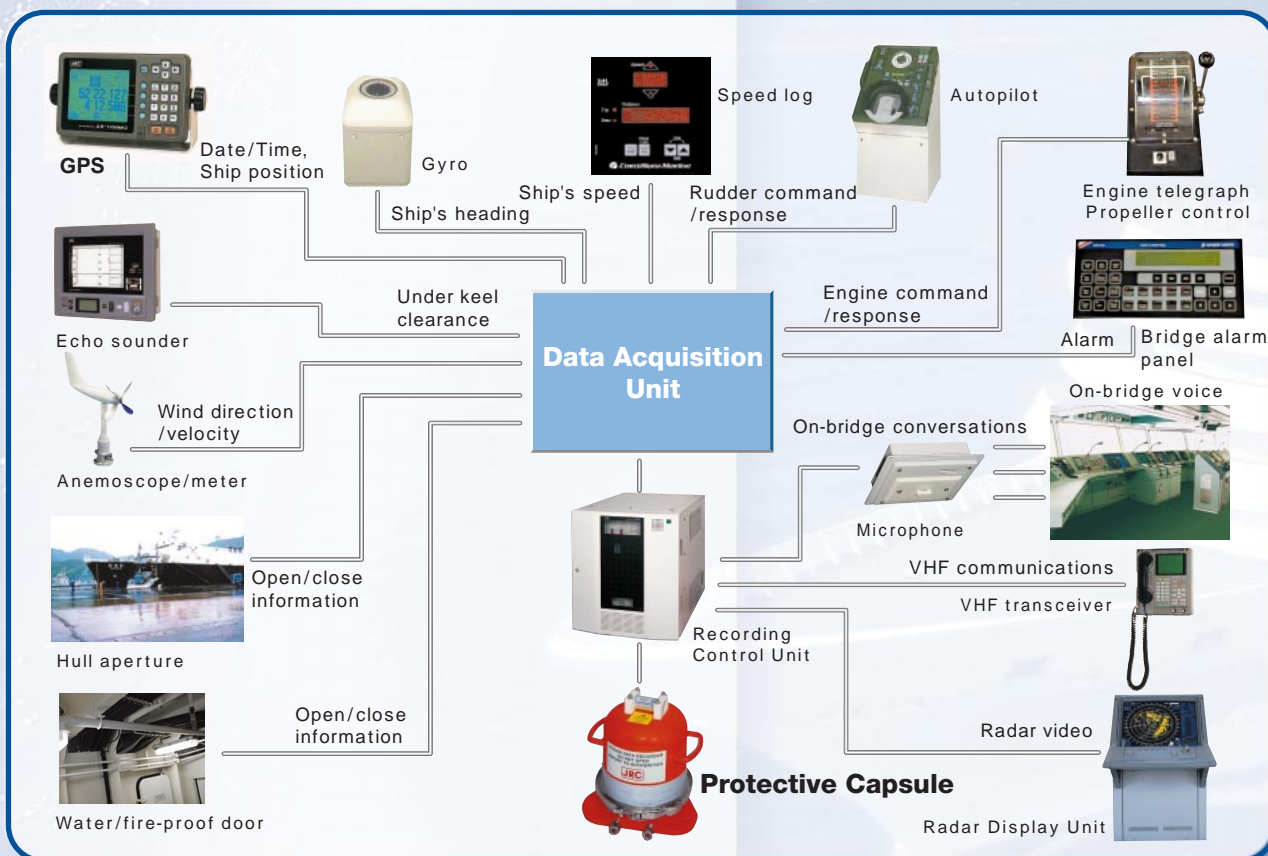


Photo: VDR on board "Pacific Venus" by courtesy of Japan Cruise Line, Inc.



FEATURES

● Ease of Installation

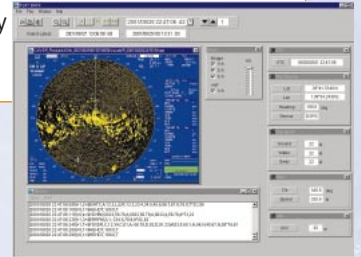
Networking with LAN for cable saving
Various types of interface for sensors
Speedy on-site setting of parameters for various types of interface

● Real-time Display of Collected Data (Option)

Real-time display of various types of on-board data collected by the VDR

● Playback Unit with Superior Operability (Option)

Effective analysis and investigation of marine disaster
Superior operability with Windows*-based PC



● On-line maintenance service (option)

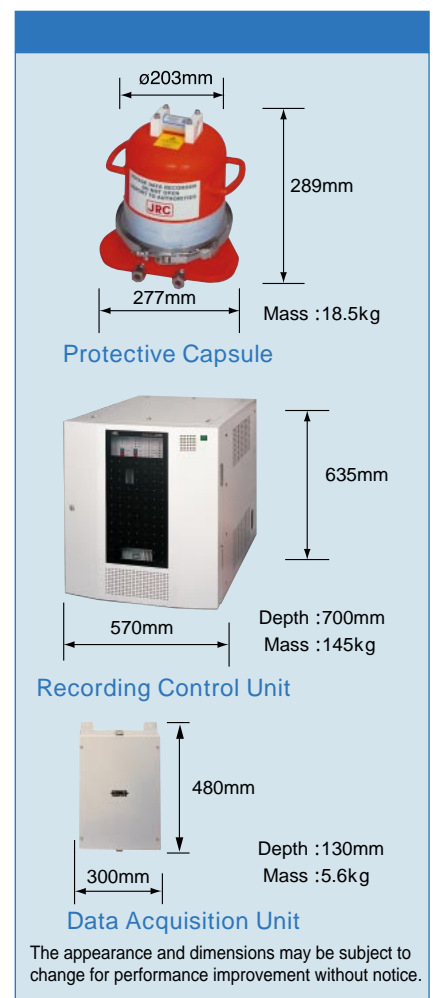
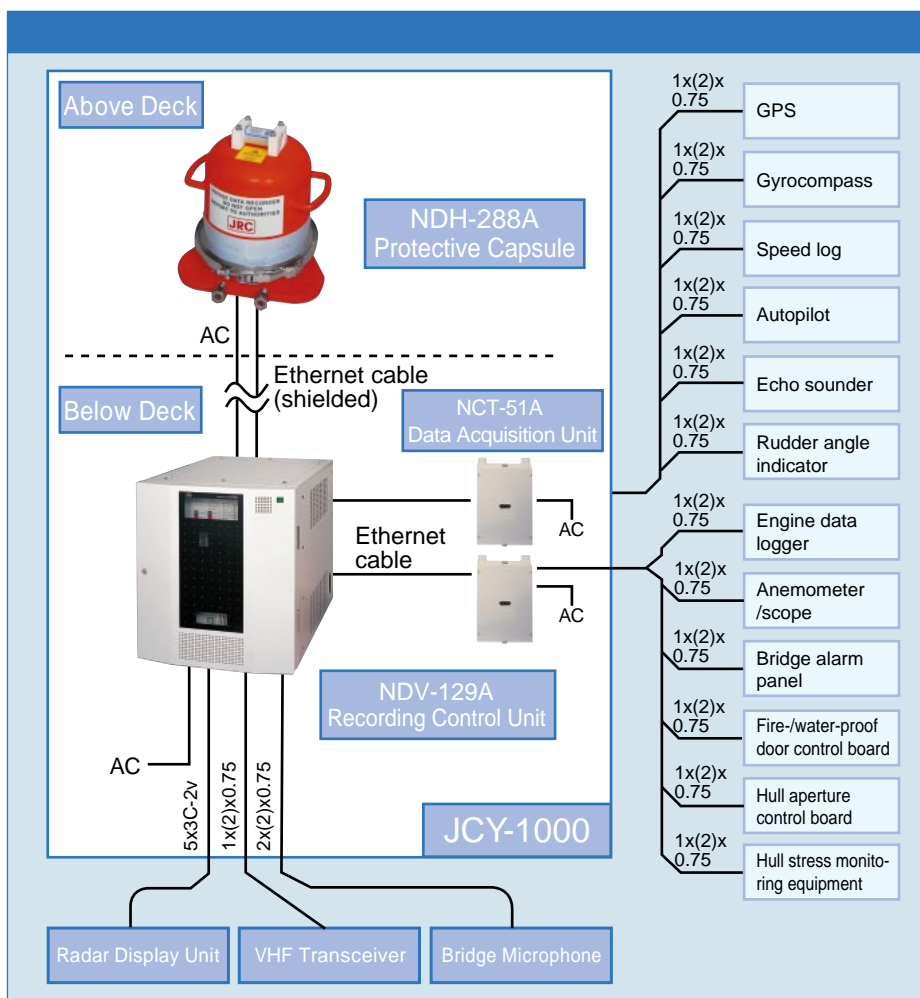
On-shore maintenance support via Inmarsat link with the Recording Control Unit (RCU) connected to an on-board server

● Designed to International Standards

IMO Res. A. 861 (20), IEC61996

* Windows: a trademark of Microsoft





Major Specifications

Fully meets the international standards: IMO Res. A.861 (20), IEC61996, IEC61162-1 (NMEA 0183 Ver2.30), IEC60945 and others

Protective Capsule

Recorded data

:Date, time, ship's position, ship's speed, ship's heading, on-bridge voice, radar videos, VHF communications voice, water depth under keel, bridge alarm, command/response rudder angle, engine command/response values, fire/waterproof door states, hull aperture state, acceleration and hull stress, wind direction/velocity, etc.

Recorded data volume

:Data for continuous 12 hours or more

Data recording cycle

:Radar videos: 15 sec.; others: 1 sec.

Data holding period

:2 years or more

Environmental conditions

:Fireproof; One hour or more at 1100 C

:Waterproof; 24 hours or more at 6000m in depth

System power supply

:100/110/115/120/220/240VAC

⚠ Cautions for Safety

Read the Instruction Manual before your use for safety in operation.

Do not install this equipment in a place with water, wetness, vapor, dust and oily smoke. Otherwise, a fire, electric shock or failure may result.

For the installation work for this equipment, request to JRC agents or dealers. The installation work done by any non-specialist personnel may result in an electric shock or failure.

For further information, contact:



Since 1915

Japan Radio Co., Ltd.

URL <http://www.jrc.co.jp/>

Maritime Sales Department: 1-1, Shimorenjaku 5-chome Mitaka-shi, Tokyo 181-8510, JAPAN

Telephone: +81-(0)422-45-9552

Facsimile: +81-(0)422-45-9273

Overseas Branches : Seattle, Amsterdam

Liaison Offices : Taipei, Pusan, Manila, Jakarta, New York, Piraeus