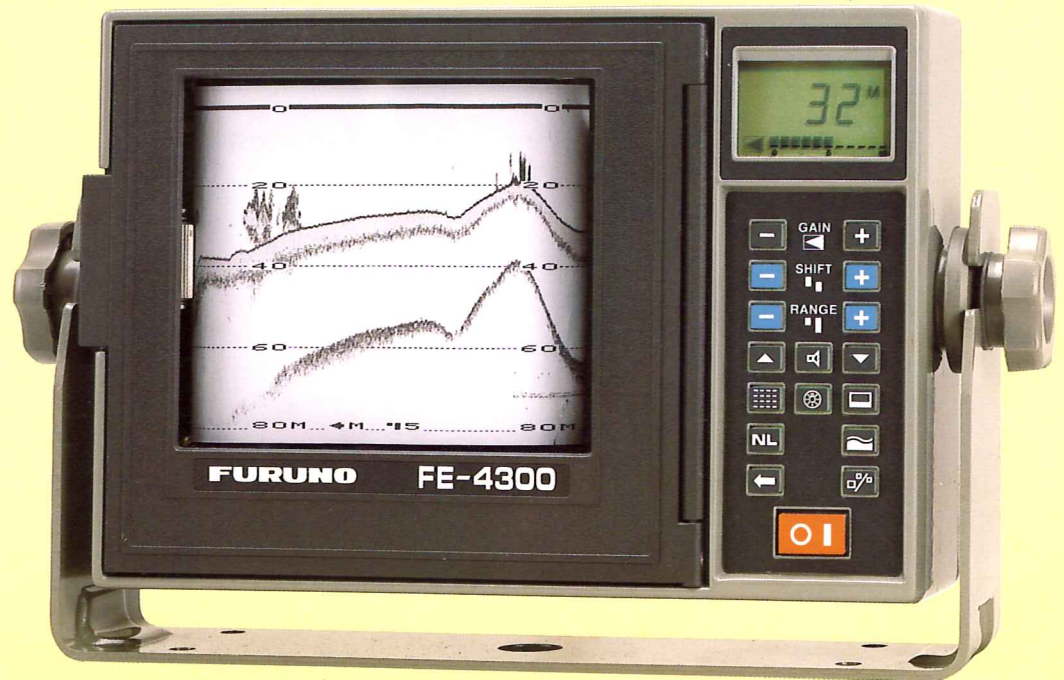


FURUNO®

High-sensitivity,
Low-cost

4" PAPER ECHO SOUNDER

Model **FE-4300**



- 7 basic ranges plus multiple phased ranges to max 640 m.
- 100 W output power, high sensitivity and low noise amplifier.
- On-paper printing of scale, alarm markings and control settings.
- Depth always displayed on LCD panel even while paper advance suspended.
- Easy-to-handle 4" paper cassette.
- SHADOWLINE®, Bottom-Lock and shallow water alarm.
- Computer-optimized variable pulselength and pulse rate interlocked with range selection for high definition of fish targets.
- LCD display of 10 step gain settings.
- Illuminated paper and LCD.

THE new FURUNO FE-4300 is an advanced 4" paper echo sounder. Powerful 100 W transmitter is best matched with the newly-designed high-sensitivity and low-noise amplifier to further enhance capability of detection of weak echoes and bottom tracking.

Received echoes are digitally quantized with four levels of gray. Assessment of fish school density or the size of a single large fish is thus considerably eased in comparison to a conventional "flasher" or Liquid Crystal Readout type of echosounder, which give no indication of target strength.

The SHADOWLINE® and the Bottom Lock features aid detection of fish close to or on the bottom. The

SHADOWLINE® effect creates a gray belt below a thin black line representing the bottom contour. Any fish close to the bottom show up distinctly contrasted to this gray area. Bottom Lock operation "locks" onto the bottom contour over the lower one-third of the paper to make bottom fish really stand out from the bottom. A separate LCD readout shows the water depth continuously, whether the paper recording is activated or not, saving your paper for when it is really needed.

The FE-4300 may be ordered configured for either 50 kHz (deep water, wide beamwidth) or 200 kHz (shallow water, narrow beamwidth) operation, with a variety of transducer types and transducer mountings for different types of boats.

SPECIFICATIONS OF FE-4300

1. Depth Range

Range		1	2	3	4	5	6	7
Meters	Basic	0 - 5 m	0 - 10 m	0 - 20 m	0 - 40 m	0 - 80 m	0 - 160 m	0 - 320 m
	Phase Step	1 m	2 m	5 m	10 m	20 m	40 m	80 m
	Bottom Lock	5 m						
Feet	Basic	0 - 15 ft	0 - 30 ft	0 - 60 ft	0 - 120 ft	0 - 240 ft	0 - 480 ft	0 - 960 ft
	Phase Step	5 ft	10 ft	15 ft	30 ft	60 ft	120 ft	240 ft
	Bottom Lock	15 ft						
Fathoms	Basic	0 - 2.5 fa	0 - 5 fa	0 - 10 fa	0 - 20 fa	0 - 40 fa	0 - 80 fa	0 - 160 fa
	Phase Step	1 fa	2 fa	4 fa	5 fa	10 fa	20 fa	40 fa
	Bottom Lock	2.5 fathoms						

Units are selected internally.

Max phasing 320 m, 960 ft, 160 fa

Max range 640 m, 1920 ft, 320 fa

2. Recording Paper

PD-1015NW Dry Paper, 10 cm × 15 m

3. Paper Advance

10, 18, 33 mm/min.

4. Intensity Gradation

White, Gray, Dark Gray, Black

5. Shallow Depth Alarm

Alarm sounds when the water gets shallower than a preset depth.

Depth set between 0 and 320 m

(0 - 960 ft or 0 - 160 fathoms)

6. Output Power

100 W r.m.s.

7. Pulselength

End Range	P/L
10 m	0.1 ms
80	0.2
160	0.4
320	0.8
640	1.2

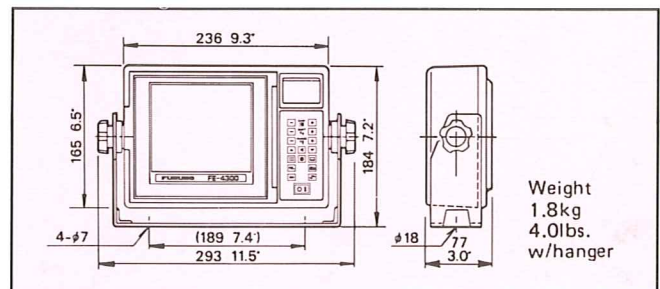
Pulse repetition rate is interlocked with range selection from 72 to 288 per minute.

8. Power Supply

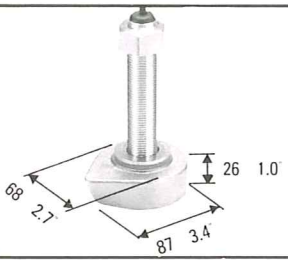

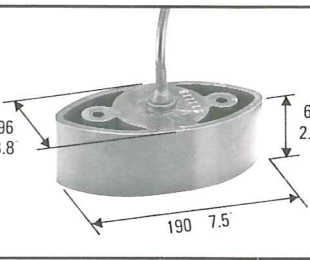
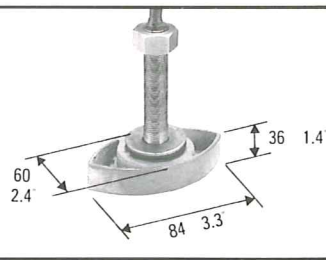
11 - 15 VDC, less than 10 W

9. Equipment List

1. Recorder Unit	1 unit
2. Transducer	1 pc.
3. Standard Spare Parts	1 set
4. Standard Accessories	1 set



Choice of Transducers (): Beamwidth

STANDARD	OPTIONS		
 <p>50 kHz 50B5NR (44°) 200kHz 200B5NR (12°) Metal mold</p>	 <p>50 kHz 50B-6B (28°) 200 kHz 200B-5S (8.5°) Plastic mold</p>	 <p>50 kHz 50B-6G (28°) Plastic mold (for bottom discrimination)</p>	 <p>200 kHz 200B-5 (8.5°) Metal mold</p>

SPECIFICATIONS SUBJECT TO CHANGE WITHOUT NOTICE



The future today with FURUNO's electronics technology.

FURUNO ELECTRIC CO., LTD.

9-52, Ashihara-cho, Nishinomiya City, Japan

Telephone: (0798) 65-2111, Telex: 5644-325, Telefax: (0798) 65-4200

Catalogue No. E-338 8812XJ Printed in Japan

TRADE MARK REGISTERED
MARCA REGISTRADA