

THD (GNSS Method)/GNSS COMPASS

NGC-3000

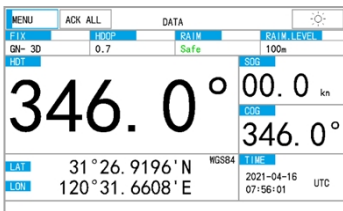
- Determine the heading of a ship
- Highly accurate heading of 0.4° RMS
- Full GNSS with GPS, BDS, GLONASS, GALILEO
- Both THD (transmitting heading device) and GNSS
- Large LCD, 7 inch/color, touch screen operation
- Highly accurate SOG, COG, ROT and position
- Multi outputs of RS422 & LAN
- Data interface to BAM/INS
- Up to five display modes available
- Compliant with IMO MSC.116 (73) for THD
- Maintenance-free design
- Type approval with CCS



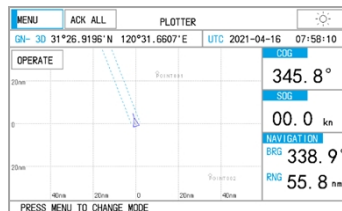
PROCESSOR UNIT



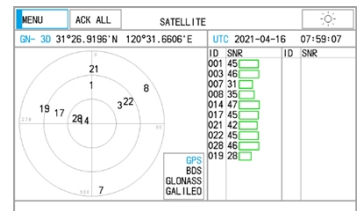
DISPLAY UNIT



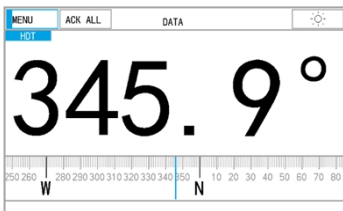
DATA (NAV DATA)



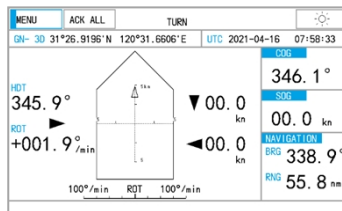
PLOTTER



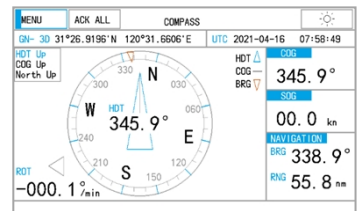
SATELLITE



DATA (HEADING)



TURN



COMPASS



SPECIFICATIONS

● GENERAL

- Heading Accuracy: 0.4° RMS
- Heading Resolution: 0.1°
- Tracking Rate of Turn: 45°/sec
- Tracking Acceleration: 1G
- Pitch/roll Angle: ±60°
- Receiving Frequencies: GPS L1/L2, BDS B1/B2, GLONASS L1/L2, GALILEO E1/E5b
- Position Accuracy: 1.5 m
- Speed Accuracy: 0.03 m/s
- Position Fixing Time: <30 s
- Data Output Rate: max 20 Hz

● DISPLAY

- Display System: 7 inch, color LCD, touch screen operation, 154 (W)×87 (H) mm
- Resolution: 800×480 dots
- Display Mode: DATA (Heading, NAV data), PLOTTER, TURN, COMPASS, SATELLITE

● INTERFACE

- Output Ports: 3 IEC-61162-1 Ed4, Ed5, NMEA 1.5, 2.0, 2.3
1 IEC-61162-450 LAN, RJ45 connector
- Transmission Speed: 4800/9600/19200/38400 bps (selectable)
- BAM/INS In/Out: ACN, ALC, ALF, HBT
- Data Sentences: HDT, THS, ROT, RMC, GGA, VTG, ZDA, DTM, GLL, GST, ALC, ALF, HBT, RTE, WPL

- **POWER SUPPLY:** DC 24 V (range 12~36 V), 500 mA

● ENVIRONMENTAL CONDITION

- Temperature Range: -20°C~+55°C operating
-30°C~+70°C storage (Antenna)
- IP Grade: IP22 (Processor Unit & Display Unit)
IP66 (Antenna Unit)
- Compass Safe Distance: 1.15m (Standard)

- **DIMENSION:** 174 (W)×81 (H)×200 (D) mm (Processor Unit)
264 (W)×145 (H)×83 (D) mm (Display Unit)
810 (W)×107 (H)×160 (D) mm (Antenna Unit)

EQUIPMENT LIST

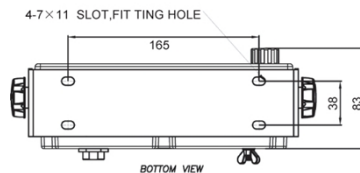
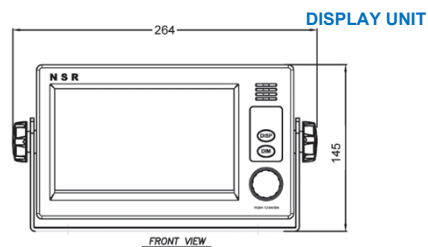
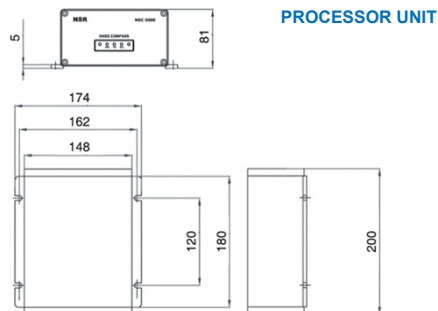
● STANDARD

- Processor Unit	NGC-3000P	1 pc
- Display Unit	NGC-3000D	1 pc
- Antenna	NGA300	2 pc
- Accessories		1 set

● OPTIONS

- Flush Mount Bracket for Display Unit		1 pc
----------------------------------------	--	------

SIZE DIMENSION



SYSTEM DIAGRAM

