

JRC

Automatic Identification System

AIS

JHS-180



JRC

Japan Radio Co., Ltd.

Automatic Identification System

The JHS-180 AIS (Automatic Identification System) is a shipborne system capable of regularly broadcasting own ship's unique information and always receiving and displaying other ship's information broadcast from other ships in the VHF band using new technology SOTDMA. The ship's information includes a ship's name and cargoes as well as its navigational information such as the ship's position, course and speed.

In accordance with SOLAS* as amended in 2000, passenger ships, the vessels of over 300 tons in international voyage and the vessels of over 500 tons in non-international voyage are obligated to carry the AIS. The vessels newly built on and after July 1, 2002 will be obligated to carry the AIS on the date of new building and the existing vessels will be obligated in phases for a period of July 1, 2002 to July 1, 2008.

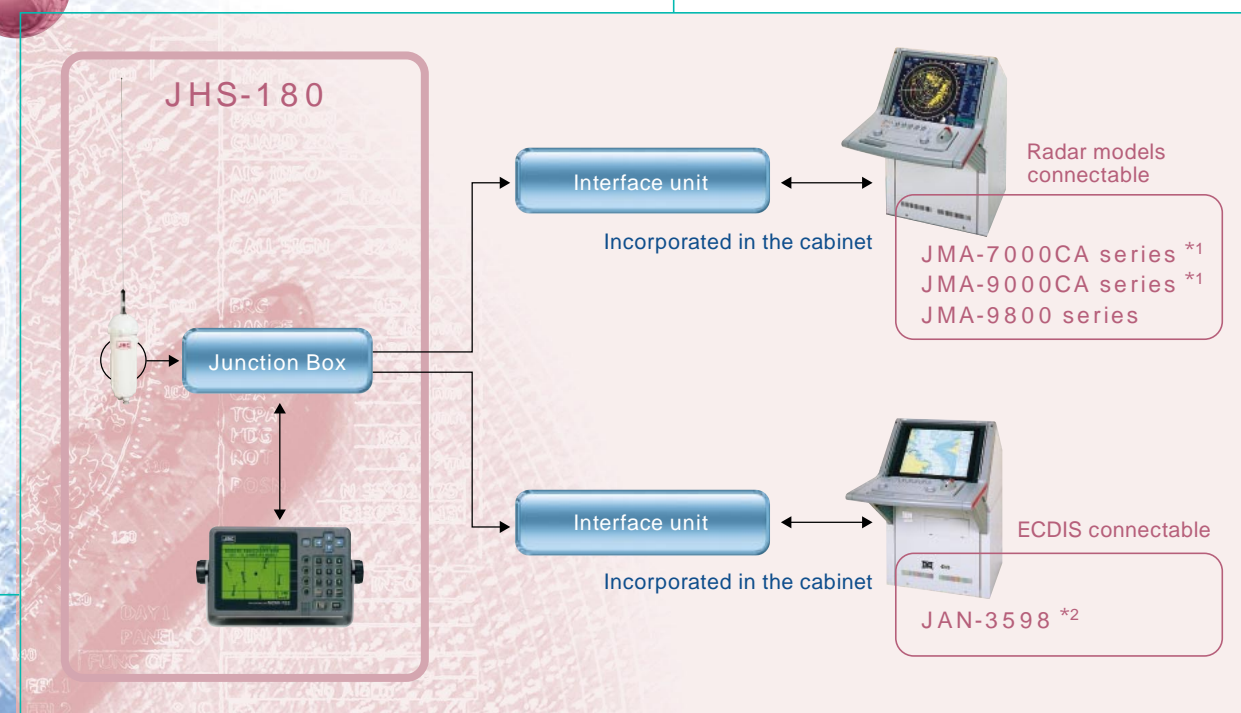
* SOLAS : International Convention for the Safety Of Life At Sea

FEATURES

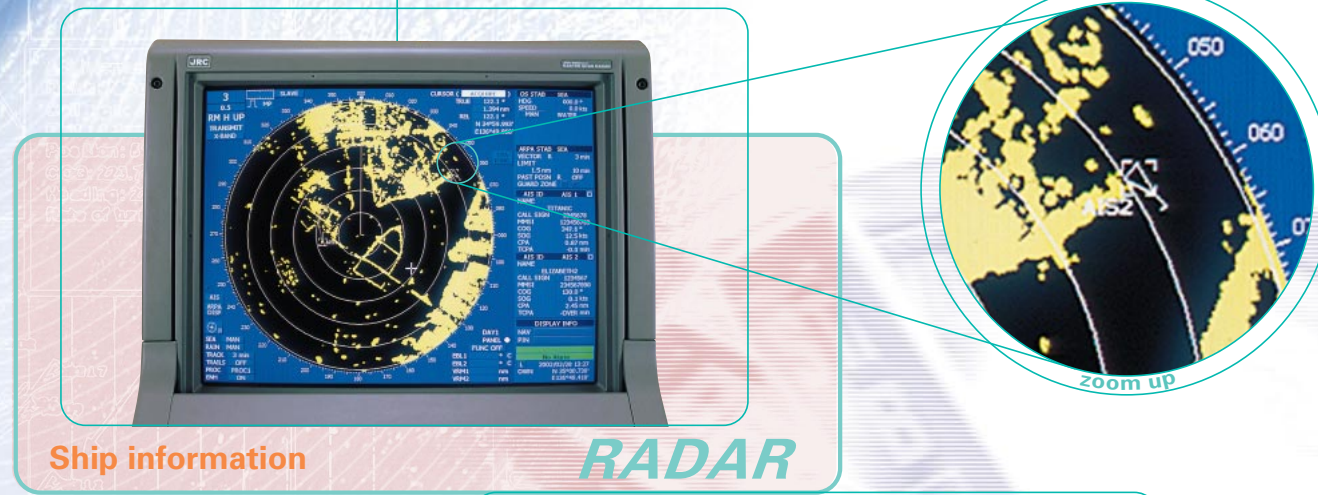
- The single-unit structure* combining the antenna with the transponder guarantees easy installation and economy in terms of the system cost.
- A guard zone settable in common with the JRC ARPA radar equipment ensures the predictability of collision avoidance to be surprisingly enhanced.
- The function of displaying a fellow ship's identification is provided.
- On-line maintenance support is available.

* Patent pending (in Japan and 9 other countries)

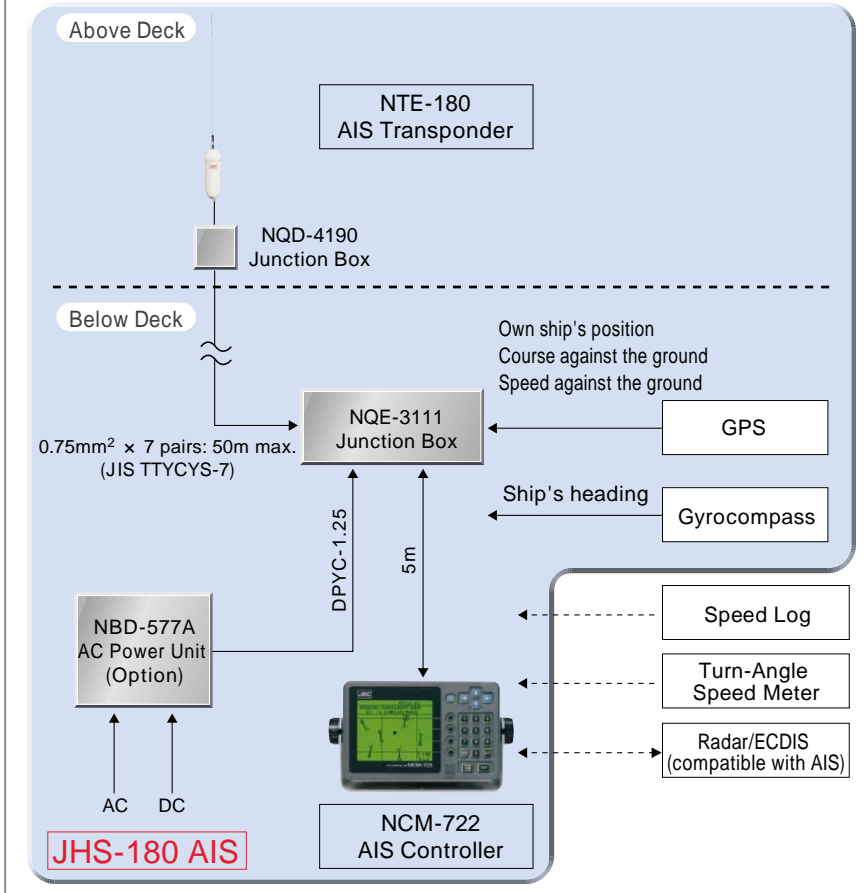
Connection with Radar/ECDIS



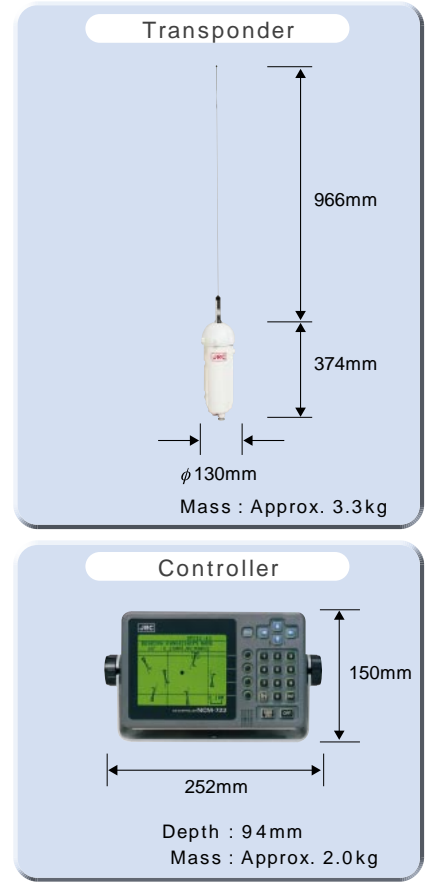
*1 Compatible with IMO-specified version (after January 1999)
*2 JRC's unique AIS symbol is indicated.



Connection Diagram



Dimensions



MAJOR SPECIFICATIONS

Full compliance with international standards:

IMO MSC Res.74 (69) Annex 3, ITU-R M. 1371, IEC61993-2, IEC60945 and others

AIS Transponder

Composition	:Transmitter, AIS Receivers (2 units), DSC receiver, Antenna (built-in)
Frequency range	:156.025 ~ 162.025MHz (transmitting/receiving)
Default channels	:CH87B (161.975MHz), CH88B (162.025MHz)
DSC receiving frequency	:CH70 (156.525MHz) fixed

AIS Controller

Display Unit	:160 x 128-dot LCD with LED backlighting
Display capability	:own ship's information, list of other ships (11 ships/screen), other ship's detailed information
Alarms	:Guard zone, lost target, etc.
Messaging capability	:Transmitting/receiving of 9 types of typical text with arbitrary contents

Power Supply

Voltage	:24VDC (-10% to +30%) :100/220VAC (+10%, -10%)
Frequency	:50/60Hz
Power consumption	:200VA (max.) at AC :DC 5A(max.), 2A (min.)

The appearance and specifications may be subject to change without notice.

⚠ Cautions for Safety

Read the Instruction Manual before your use for safety in operation.

Do not install this equipment in a place with water, wetness, vapor, dust and oily smoke. Otherwise, a fire, electric shock or failure may result.

For the installation work for this equipment, request to JRC agents or dealers. The installation work done by any non-specialist personnel may result in an electric shock or failure.

For further information, contact:



Since 1915

Japan Radio Co., Ltd.

URL <http://www.jrc.co.jp/>

Maritime Sales Department: 1-1, Shimorenjaku 5-chome
Mitaka-shi, Tokyo 181-8510, JAPAN

Telephone: +81-(0)422-45-9552

Facsimile: +81-(0)422-45-9273

Overseas Branches : Seattle, Amsterdam

Liaison Offices : Taipei, Pusan, Manila, Jakarta,
New York, Piraeus