

- 本公司所包含内容, 本公司拥有最终解释权, 更多详细资料敬请垂询
- 本公司工程技术人员将竭诚为您服务, 图片与实物若有出入, 请以实物为准
- 未经许可, 禁止全部或部分复制
- 如有变更, 届时恕不另行通知, 衷心希望本手册能给您带来方便
- 产品不断研发、技术持续创新……

🌿 珍惜资源, 善待环境

- The company reserves the right to the interpretation of all contents in the manual. Please feel free to contact us for more details
- Our technical staff provide best service to you sincerely. If the pictures are different from the real objects, please refer to the real object
- Unauthorized Use, Prohibited to copy all or part of the information
- There is no prior notice if any change. Sincerely hope that this manual can bring convenience to you
- Products research and development, Continuous innovation of technology……



**浙江一普金属制造有限公司**  
ZHEJIANG YIPU METAL MANUFACTURING CO., LTD.

地址: 浙江省乐清市北白象镇车岙工业区  
ADD: Che Ao Industrial Zone, Beibaixiang Town, Yueqing, Zhejiang, China  
TEL: +86-577-62851855  
FAX: +86-577-62851855  
MAIL: penny@yipumetal.com, sale@yipumetal.com  
WEBSITE: www.zjyipu.com



扫一扫 查看电子样本



## 产品选型手册

### Product Catalog

**浙江一普金属制造有限公司**  
ZHEJIANG YIPU METAL MANUFACTURING CO., LTD.





## 公司简介 Company Profile

浙江一普金属制造有限公司成立于2011年，是一家专业生产高端铜编织线和绞线的现代化企业，具有高科技、专业化、多元化的生产水平，最先进技术，最优化的管理，依靠科技进步，自主研发，高起点进行技术改造，走质量效益型道路，提倡品牌取胜、质量取胜，因此企业发展迅速。公司始终坚持“以质量求生存，以技术求发展，确保生产能力和服务水平，提供满意的产品”的经营理念。

公司产品主要为电工铜编织线、铜电刷线、电工铜绞线，适用于各种智能电器、万能断路器、塑壳断路器以及各种高低压开关柜的连接线。公司的此几款产品与其他厂商相比，最大的亮点在于：铜单丝极细(可生产到0.03mm)，保质期内不变色，加工后无氧化，焊接后产品软韧性极软，安装到开关后能顺利反应跳闸，导电率灵敏度高，每一轴出厂都经过严格的电阻电流测试。

我们的产品通过了上海国家电线电缆质量监督检验中心的测试，同时也通过通标标准技术服务有限公司SGS环保测试四大重金属的测试，结果符合欧盟RoHS指令2002/95/EC的重订指令2011/65/EU附录II的限值要求，并与浙江正泰、德力西、天正、人民电器等大型集团公司建立了良好的合作关系。

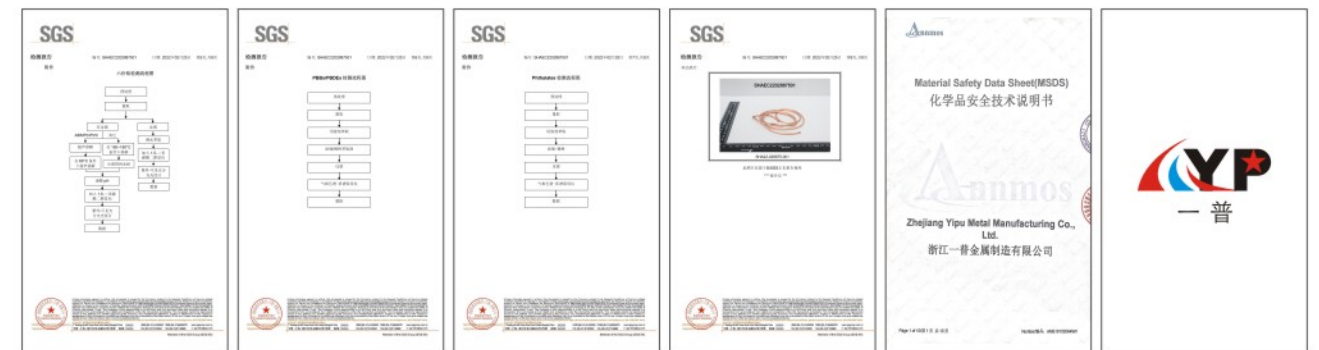
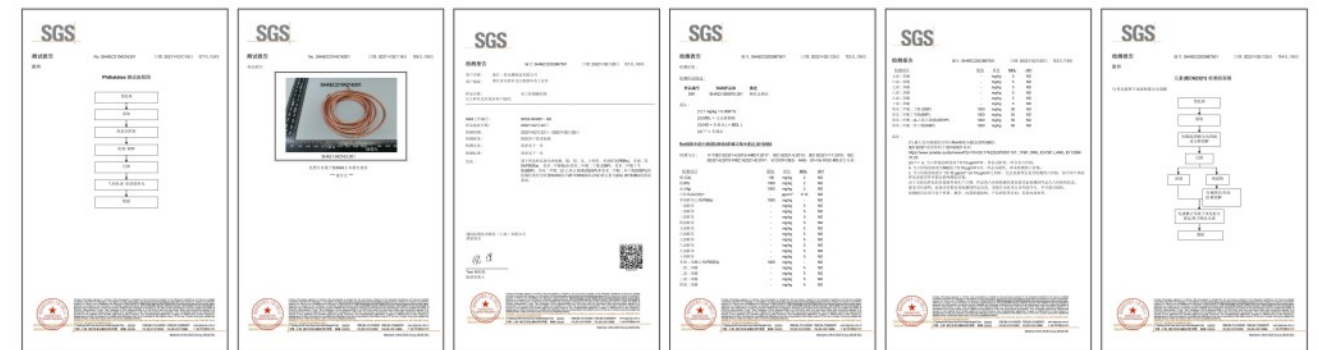
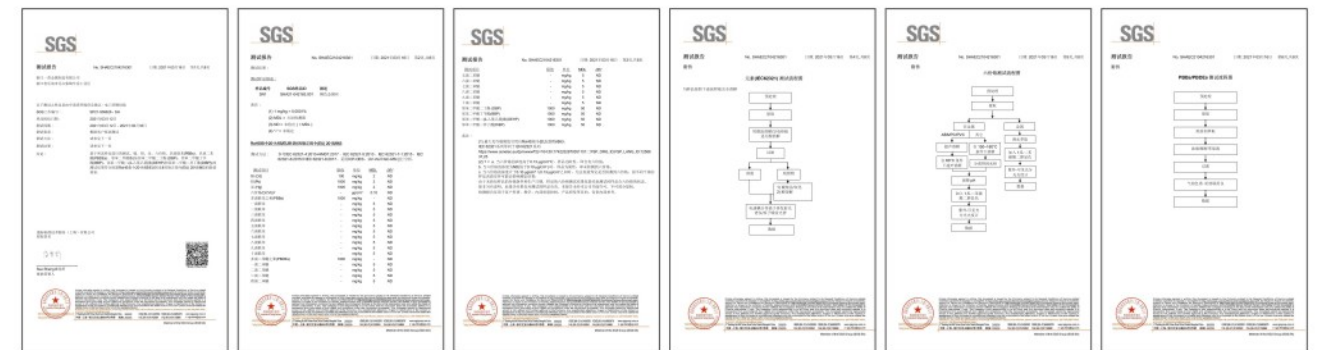
Founded in 2011, Zhejiang Yipu Metal Manufacturing Co., Ltd. is a modern enterprise specializing in the production of high-end copper braided wire and stranded wire, with high-tech, professional and diversified production level, the most advanced technology, the optimal management, relying on scientific and technological progress, independent research and development, technological transformation from a high starting point, take the quality and efficiency of the road, to promote brand win, quality win, so companies develop rapidly. Our company always insists on the business principle of "survive by quality, develop by technology and ensure the production capacity and service level, providing satisfactory products".

Our company products are mainly for the electrical copper braided line, the copper brush wire, electric copper stranded wire, applicable in all kinds of intelligent electrical, universal circuit breaker, molded case circuit breaker and all kinds of high and low voltage switchgear connecting line, several of the company's products relative to other manufacturers, the biggest bright spot is that copper wire and very fine (production to 0.03 mm), shelf-life period does not change color, processing after the no oxidation, welding products after soft toughness very soft, installation to switch can smooth response is tripped, the conductivity of high sensitivity, axis of each factory through strict resistance current testing.

Our products have passed the test of the Shanghai National wire and cable quality supervision and inspection center, and also passed the test of four heavy metals in SGS environmental protection test of SGS Standard Technical Service Co., Ltd, test results accord with the EU RoHS directive 2002/95/EC reset instruction in Appendix 2011/65/EU II limits, and with Zhejiang CHINT, DELIXI, TENGGEN, People Electric such as large group companies established good relations of cooperation.



## 证书 Certificate





铜编织线 Copper Braided Wire



产品详情: 本产品采用T1紫铜丝, 铜含量≥99.95%, 可用于电气安装, 开关设备, 接地导电及蓄电池等。

表面处理: 裸铜, 镀锡

单丝线径: 0.04mm, 0.05mm, 0.07mm, 0.10mm, 0.12mm, 0.15mm, 0.20mm, 0.254mm, 0.30mm

截面积: 0.2mm<sup>2</sup>-300mm<sup>2</sup>

Product Specification: The product is made of T1 copper wire, purity≥99.95%, can be used in electrical installation, switchgear, grounding conduction and storage battery, etc.

Surface: bare copper, tin plating

Single wire diameter: 0.04mm, 0.05mm, 0.07mm, 0.10mm, 0.12mm, 0.15mm, 0.20mm, 0.254mm, 0.30mm

Section area: 0.2mm<sup>2</sup>-300mm<sup>2</sup>

标称截面积 Nominal Cross Section (mm <sup>2</sup> )	计算截面积 Measured Cross Section (mm <sup>2</sup> )	线结构 Wire Structure Strands x Wire Number Per Strand x Layers /Single Wire Diameter (mm)	宽度 Width Approx. (mm)	厚度 Thickness Approx. (mm)	重量 Weight Approx. (kg/km)	最大载流量 (A, 周围环境温度35°C) Max. Current Capacity (A, ambient temperature 35°C)
1.5	1.69	24 x 4 x 1/0.15	4.0	0.8	15.8	21
2	2.12	24 x 5 x 1/0.15	5.0	0.8	19.6	25
2.5	2.54	24 x 6 x 1/0.15	6.0	0.8	23.5	30
3	2.97	24 x 7 x 1/0.15	6.2	1.0	27.4	35
4	4.24	24 x 10 x 1/0.15	7.0	1.2	39.2	40
6	6.24	32 x 11 x 1/0.15	10.0	1.2	57.5	55
8	8.48	32 x 15 x 1/0.15	12.0	1.5	78.4	70
10	10.18	24 x 24 x 1/0.15	12.5	2.0	95.0	85
11	11.02	48 x 13 x 1/0.15	18.0	1.3	102.0	90
12	12.72	24 x 30 x 1/0.15	14.0	2.0	118.0	95
16	16.96	24 x 40 x 1/0.15	16.0	2.2	159.0	120
20	21.20	24 x 50 x 1/0.15	18.0	2.5	198.0	135
25	25.45	24 x 60 x 1/0.15	22.0	3.0	238.0	150
35	33.93	24 x 80 x 1/0.15	25.0	4.0	317.0	195
50	50.02	24 x 118 x 1/0.15	30.0	6.0	472.0	250
70	67.82	64 x 30 x 2/0.15	41.0	4.0	633.0	300
75	75.03	36 x 118 x 1/0.15	35.0	6.0	710.0	325
95	94.74	36 x 149 x 1/0.15	45.0	6.0	885.3	360
100	99.83	36 x 157 x 1/0.15	45.0	6.0	932.8	380
120	127.17	48 x 149 x 1/0.15	55.0	6.0	1180.4	400

标称截面积 Nominal Cross Section (mm <sup>2</sup> )	计算截面积 Measured Cross Section (mm <sup>2</sup> )	线结构 Wire Structure Strands x Wire Number Per Strand x Layers /Single Wire Diameter (mm)	宽度 Width Approx. (mm)	厚度 Thickness Approx. (mm)	重量 Weight Approx. (kg/km)	最大载流量 (A, 周围环境温度35°C) Max. Current Capacity (A, ambient temperature 35°C)
1.5	1.50	24 x 32 x 1/0.05	4.0	1.0	14.1	21
2.5	2.54	24 x 54 x 1/0.05	6.0	0.8	23.7	30
4	4.00	24 x 85 x 1/0.05	7.0	1.2	37.4	40
10	10.03	24 x 213 x 1/0.05	12.5	2.0	93.8	85
25	24.96	24 x 530 x 1/0.05	22.0	3.0	233.2	150
50	50.02	32 x 1062 x 1/0.05	30.0	6.0	467.4	250
75	75.03	36 x 1062 x 1/0.05	35.0	6.0	701.1	325
100	100.04	36 x 1416 x 1/0.05	45.0	6.0	934.8	380
1.5	1.47	24 x 16 x 1/0.07	4.0	1.0	13.8	21
2.5	2.58	24 x 28 x 1/0.07	6.0	0.8	24.1	30
4	4.06	24 x 44 x 1/0.07	7.0	1.2	37.9	40
10	9.97	24 x 108 x 1/0.07	12.5	2.0	93.1	85
25	24.92	24 x 270 x 1/0.07	22.0	3.0	232.9	150
50	49.97	32 x 406 x 1/0.07	30.0	6.0	467.0	250
75	75.05	36 x 542 x 1/0.07	35.0	6.0	701.3	325
100	99.98	36 x 722 x 1/0.07	45.0	6.0	934.3	380
1.5	1.51	24 x 8 x 1/0.10	4.0	1.0	14.0	21
2.5	2.64	24 x 14 x 1/0.10	6.0	0.8	24.6	30
4	4.14	24 x 22 x 1/0.10	7.0	1.2	38.7	40
10	9.98	24 x 53 x 1/0.10	12.5	2.0	93.3	85
25	25.05	24 x 133 x 1/0.10	22.0	3.0	234.1	150
50	50.24	32 x 200 x 1/0.10	30.0	6.0	469.4	250
75	75.17	36 x 266 x 1/0.10	35.0	6.0	702.4	325
100	100.04	36 x 354 x 1/0.10	45.0	6.0	934.8	380
1.5	1.63	24 x 6 x 1/0.12	4.0	0.8	15.2	21
2	2.17	24 x 8 x 1/0.12	5.0	0.8	20.0	25
2.5	2.71	24 x 10 x 1/0.12	6.0	0.8	25.3	30
4	4.07	24 x 15 x 1/0.12	7.0	1.2	38.0	40
10	10.04	24 x 37 x 1/0.12	12.5	2.0	93.8	85
25	24.96	24 x 92 x 1/0.12	22.0	3.0	233.2	150
50	49.92	32 x 138 x 1/0.12	30.0	6.0	466.4	250
75	75.28	36 x 185 x 1/0.12	35.0	6.0	703.5	325
100	100.11	36 x 246 x 1/0.12	45.0	6.0	935.5	380
0.5	0.49	13x3x1/0.127	1.4	0.4	4.6	12.5
1	0.99	13 x 6 x 1/0.127	5.2	0.25	9.2	18
2	2.13	24 x 7 x 1/0.127	5.0	0.8	19.8	25
6	6.08	24 x 20 x 1/0.127	8.0	1.5	56.7	45
10	10.03	24 x 33 x 1/0.127	12.5	2.0	93.7	55
16	24.92	24 x 82 x 1/0.127	22.0	3.0	232.8	85
50	50.24	32 x 124 x 1/0.127	30.0	6.0	469.4	250
75	75.21	36 x 165 x 1/0.127	35.0	6.0	702.8	325
100	100.28	36 x 220 x 1/0.127	45.0	6.0	937.0	380
0.2	0.16	13 x 1 x 1/0.20	1.4	0.4	1.5	7
1.5	1.51	24 x 2 x 1/0.20	3.7	1.0	14.0	21
4	3.77	24 x 5 x 1/0.20	6.8	1.4	35.2	40
6	6.03	48 x 4 x 1/0.20	12.0	1.0	56.3	55
10	10.55	24 x 14 x 1/0.20	12.5	2.0	98.5	85
25	24.87	24 x 33 x 1/0.20	22.0	3.0	232.3	150
50	50.24	32 x 50 x 1/0.20	30.0	6.0	469.4	250
75	74.60	36 x 66 x 1/0.20	35.0	6.0	697.1	325
100	100.48	40 x 80 x 1/0.20	45.0	5.0	938.9	380



### 铜绞线 Copper Stranded Wire



**产品详情:**

本产品采用T1紫铜丝，铜含量≥99.95%，可用于电气安装，开关设备，接地导电及蓄电池等。

表面处理：裸铜，镀锡

单丝线径：0.04mm, 0.05mm, 0.07mm, 0.10mm, 0.12mm, 0.15mm, 0.20mm, 0.254mm, 0.30mm

截面积：1.5mm<sup>2</sup>-2000mm<sup>2</sup>

**Product Specification:**

The product is made of T1 copper wire, purity ≥ 99.95%, can be used in electrical installation, switchgear, grounding conduction and storage battery, etc.

Surface: bare copper, tin plating

Single wire diameter: 0.04mm, 0.05mm, 0.07mm, 0.10mm, 0.12mm, 0.15mm, 0.20mm, 0.254mm, 0.30mm

Section area: 1.5mm<sup>2</sup>-2000mm<sup>2</sup>

标称截面积 Nominal Cross Section (mm <sup>2</sup> )	计算截面积 Measured Cross Section (mm <sup>2</sup> )	线结构 Structure		计算外径 Calculating Outside diameter (mm)	20°C时最大直流电阻 Max. DC Resistance at 20°C Ω/km BGTJR 1	计算重量 Calculating weight (kg/km)
		总根数 Total Wire Number	锭数×每锭根数/单丝直径 Strands*Wire Number Per Strand/Single Wire Diameter (mm)			
1.60	1.57	32	32/0.25	1.63	11.5	14.7
2.00	1.96	40	40/0.25	1.82	9.24	18.3
2.5	2.41	49	7 × 7/0.25	2.25	7.58	22.7
4.0	3.94	49	7 × 7/0.32	2.88	4.64	37.1
6.3	6.16	49	7 × 7/0.40	3.60	2.97	58.0
10	10.01	49	7 × 7/0.51	4.59	1.83	94.3
25	25.08	133	19 × 7/0.49	7.35	0.736	239
50	48.30	133	19 × 7/0.68	10.20	0.382	459
63	62.72	189	27 × 7/0.65	12.00	0.294	597
70	68.64	189	27 × 7/0.68	12.53	0.269	653
95	94.06	259	37 × 7/0.68	14.28	0.196	895
100	99.66	259	37 × 7/0.70	14.70	0.185	948
120	117.67	324	27 × 12/0.68	17.39	0.157	1119
160	162.66	324	27 × 12/0.80	20.20	0.113	1549
200	196.15	444	37 × 12/0.75	21.80	0.0940	1866
250	251.95	444	37 × 12/0.85	24.72	0.0732	2397
315	310.58	703	37 × 19/0.75	26.25	0.0596	2954
400	398.92	703	37 × 19/0.85	29.75	0.0462	3795
500	498.30	703	37 × 19/0.95	33.25	0.0370	4740
800	804.3	1159	61 × 19/0.94	42.30	0.0229	7651
1000	1003.6	1159	61 × 19/1.05	47.25	0.0184	9547

标称截面积 Nominal Cross Section (mm <sup>2</sup> )	计算截面积 Measured Cross Section (mm <sup>2</sup> )	线结构 Structure		计算外径 Calculating Outside diameter (mm)	20°C时最大直流电阻 Max. DC Resistance at 20°C Ω/km		计算重量 Calculating weight (kg/km)
		总根数 Total Wire Number	锭数×每锭根数/单丝直径 Strands*Wire Number Per Strand/Single Wire Diameter (mm)		BGTS	BGTSX	
6.3	6.24	552	12 × 46/0.12	4.3	2.94	3.07	59.1
8.0	7.87	696	12 × 58/0.12	4.8	2.33	2.44	74.9
10	10.04	886	12 × 74/0.12	5.3	1.83	1.91	95.1
16	15.90	1406	19 × 74/0.12	6.7	1.16	1.21	151.2
1	0.99	128	7 × 18/0.10	1.4	18.5	19.3	9.5
1.5	1.48	189	7 × 27/0.10	1.8	11.9	12.7	14.0
2	1.98	252	7 × 36/0.10	2.0	9.23	9.65	19.5
2.5	2.53	322	7 × 46/0.10	2.4	7.39	7.72	25.0
4	3.96	5047	7 × 72/0.10	2.8	4.62	4.83	38.0
5	4.94	630	7 × 90/0.10	3.2	3.69	3.86	47.6
8	7.91	1008	12 × 84/0.10	4.2	2.33	2.44	75.5
10	8.89	1260	12 × 105/0.10	4.8	1.83	1.91	97.2
16	15.90	2025	15 × 135/0.10	6.2	1.16	1.21	156.0
2	1.93	504	7 × 72/0.07	2.2	9.16	9.65	18.3
3.5	3.47	903	7 × 3 × 43/0.07	2.7	5.35	5.51	33.3
5	4.84	1260	7 × 3 × 50/0.07	3.2	3.71	3.86	46.5
8	7.75	2016	12 × 3 × 56/0.07	4.2	2.33	2.44	73.0
10	9.69	2520	12 × 3 × 70/0.07	4.8	1.83	1.91	90.5
16	15.34	3990	19 × 3 × 70/0.07	6.2	1.16	1.21	150.5
1	0.99	504	7 × 3 × 24/0.05	1.4	18.5	19.3	9.3
1.5	1.48	756	7 × 3 × 36/0.05	1.8	11.9	12.7	14.0
1.8	1.81	924	7 × 3 × 44/0.05	2.0	10.2	10.7	17.5
2.5	2.30	1176	7 × 3 × 56/0.05	2.3	7.39	7.72	22.5
4	3.95	2016	12 × 3 × 56/0.05	2.7	4.59	4.83	39.0
6	6.26	3192	19 × 3 × 56/0.05	3.6	2.93	3.21	60.0
8	8.05	4104	19 × 3 × 72/0.05	4.2	2.33	2.44	78.5
12	12.08	6156	19 × 3 × 108/0.05	5.4	1.50	1.60	117.0
1.0	1.01	32	32/0.20	1.30	17.9	18.2	9.43
4.0	3.96	126	7 × 18/0.20	3.00	4.62	4.82	37.3
6.3	6.16	196	7 × 28/0.20	3.72	2.97	3.10	58.0
10	9.90	315	7 × 45/0.20	4.62	1.85	1.93	93.3
25	25.07	798	19 × 42/0.20	7.45	0.736	0.781	238
50	49.26	1568	7 × 7 × 32/0.20	11.70	0.375	0.392	469
63	63.11	2009	7 × 7 × 41/0.20	13.32	0.292	0.305	600
1	0.99	126	7 × 18/0.10	1.4	18.5	19.3	9.5
1.5	1.48	189	7 × 27/0.10	1.8	11.9	12.7	14.0
2	1.98	252	7 × 36/0.10	2.2	9.23	8.65	19.5
2.5	2.53	322	7 × 46/0.10	2.4	7.39	7.72	25.0
4	3.96	504	7 × 72/0.10	2.8	4.62	4.83	38.0
5	4.94	630	7 × 90/0.10	3.2	3.69	3.86	47.6
8	7.91	1008	12 × 84/0.10	4.2	2.33	2.44	75.5
10	8.89	1260	12 × 105/0.10	4.8	1.83	1.91	97.2
16	15.90	2025	15 × 135/0.10	6.2	1.16	1.21	156.0



### 铜软连接 Flexible Copper Busbar Connector

产品详情:

本产品采用T1铜编织线/铜绞线两端压铜管而成(可根据客户要求两端打孔), 可用于电气安装, 开关设备, 接地导电及新能源汽车等。

表面处理: 裸铜, 镀锡

单丝线径: 0.04mm, 0.05mm, 0.07mm, 0.10mm, 0.12mm, 0.15mm, 0.20mm, 0.254mm, 0.30mm

截面积: 1.5 mm<sup>2</sup>-2000mm<sup>2</sup>

Product Specification:

The product is made of T1 copper braided wire/copper stranded wire with both end press welding (can be drilled if required), can be used in electrical installation, switchgear, grounding conduction and new energy automobile, etc.

Surface: bare copper, tin plating

Single wire diameter: 0.04mm, 0.05mm, 0.07mm, 0.10mm, 0.12mm, 0.15mm, 0.20mm, 0.254mm, 0.30mm

Section area: 1.5mm<sup>2</sup>-2000mm<sup>2</sup>



## 铜箔软连接 Copper Laminated Foil Connector

### 产品详情:

本产品采用T2铜原材料( $\geq 99.90\%$ )的铜箔叠加两端压焊而成, 根据客户要求, 铜箔软连接可做纯铜或者镀锡, 上下接触面可贴镍片或银片。

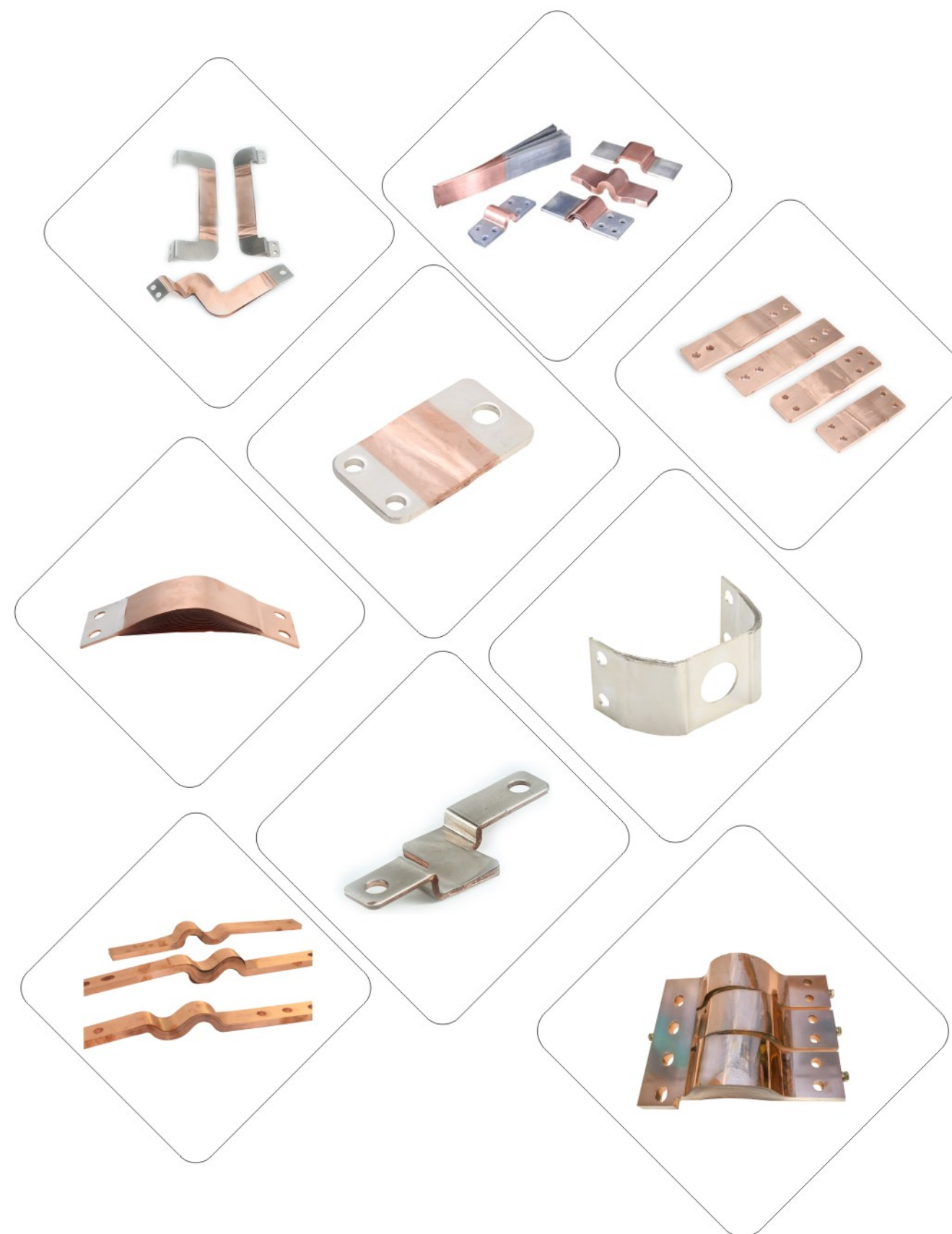
铜箔单片厚度: 0.05mm, 0.10mm, 0.20mm

### Product Specification:

The product is made of T2 copper raw material (purity  $\geq 99.90\%$ ) copper foils with both ends press welding.

According to customer requirements, it can be bare copper or tin plating, and the contact surface can be stickered to nickel or silver

Thickness of single copper foil: 0.05mm, 0.10mm, 0.20mm





## 新能源铜软连接 New Energy Copper Insulated Busbar

### 产品详情:

本产品由含铜99.9%的T2铜材料制成。它使产品具有良好的导电性和较少的杂质。

绝缘选项: 热缩管/PVC浸渍涂层/定制

电镀选项: 镀锡/定制

### Product Specification:

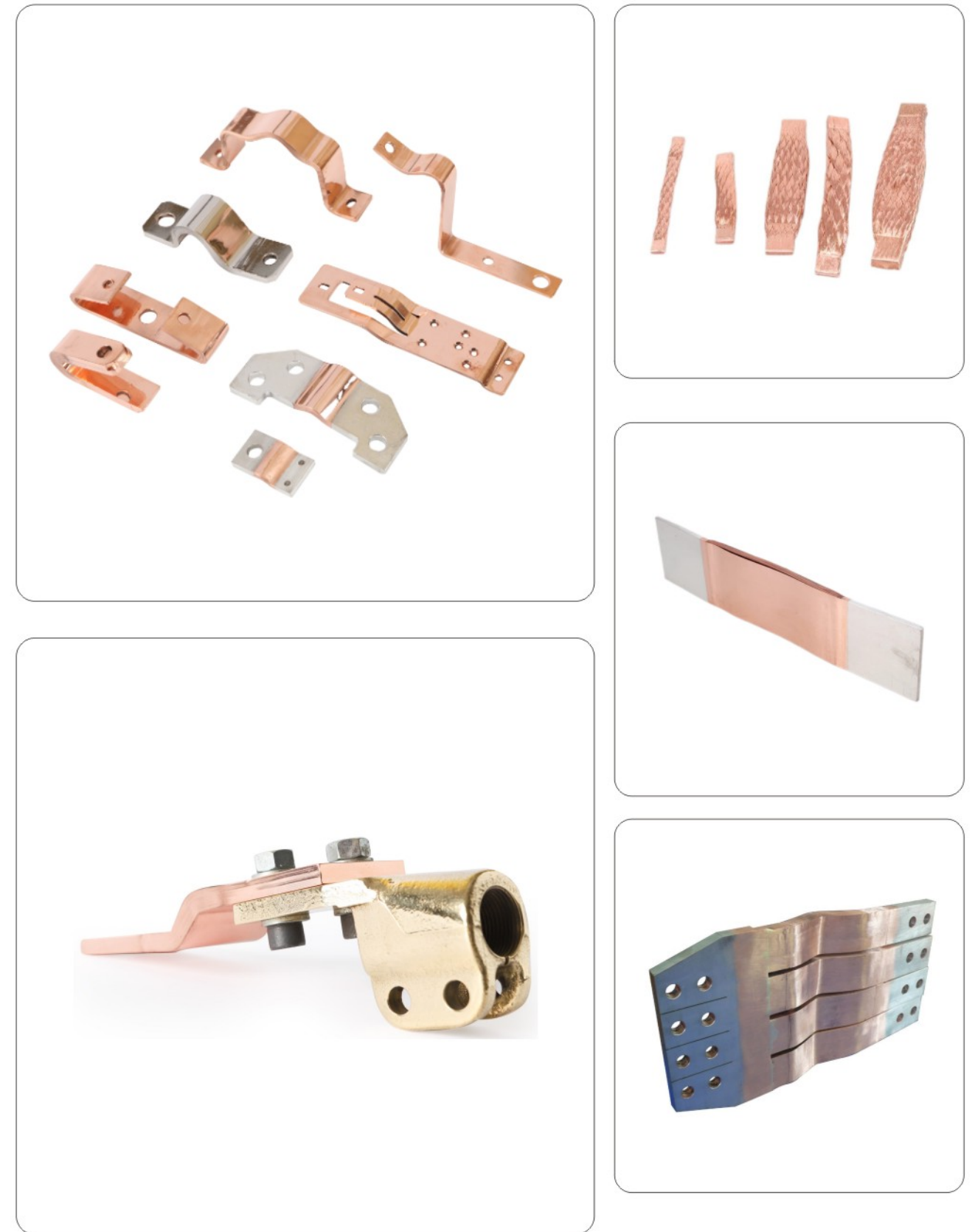
The product is made of T2 copper material, which is 99.9% copper contented. It capitals the products excellct conductivity with less impurities

Insulation Options: Heat shrink tube / PVC dipping coat / Customized

Plating Options: Tin Plating / Customized



其他铜产品 Other Copper Product









## 无氧铜光亮丝 Oxygen-free Copper Bright Wire

### 产品详情:

1. 我司生产规格为0.03mm<sup>2</sup>-2.6mm<sup>2</sup>的裸铜线 (TR)

2. 产品标准: GB3952-2008, ASTM B33-00

### 3. 产品特点:

1) 我公司生产的裸铜线采用最先进的管式连续退火/镀锡设备, 表面光洁, 柔软度均匀。其性能稳定可靠。

2) 裸铜线末端采用冷焊机进行处理, 保证下道工序的顺利使用。

### 4. 产品应用:

产品广泛应用于: 电源线、电子电缆、音频电缆、电话线、扁平电缆、计算机电缆、网络电缆、刷线、汽车电线、电气连接线、电力电缆、机车电缆、船用电缆、直通电缆等。

### Product Specification:

1. Our company produces bare copper wire (TR) with specifications of 0.03mm<sup>2</sup>-2.6mm<sup>2</sup>

2. Product standard: GB3952-2008, ASTM B33-00

### 3. Product Characteristics:

1) The bare copper wire produced by our company adopts the equipment with most advanced pipe type continuous annealing/tin plating, so its surface is bright and clean, and its softness is uniform. Its performance is stable and reliable.

2) The end of the bare copper wire is dealt with cold welding machine, which can ensure good use of the next procedure.

### 4. Product application:

The product is widely used in: power cord, electronic cable, audio cable, telephone line, flat Cable, computer cable, network cable, brush wire, automobile wire, electrical connection wire, power cable, locomotive cable, marine cable, throughline cable, etc.

产品型号 Item	规格(mm) Size	电阻率 Resistivity	线径公差 Wire Dia. Tolerance	伸长率 Elongation
TR	0.03	0.017241	±0.002	10%-18%
TR	0.04	0.017241	±0.002	10%-18%
TR	0.05	0.017241	±0.003	10%-18%
TR	0.08	0.017241	±0.003	10%-18%
TR	0.10-0.12	0.017241	±0.003	10%
TR	0.15-0.16	0.017241	±0.004	15%
TR	0.18-0.20	0.017241	±0.004	15%
TR	0.26	0.017241	±0.004	15%
TR	0.4-0.6	0.017241	±0.004	25%





## 键合银线 Bonding Silver Wire

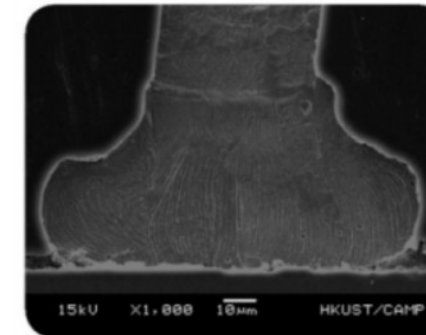
- 领先的微合金熔炼技术，保证银线键合过程中优秀的成球型稳定性和抗氧化/硫化性
- 短的热影响区(HAZ)，保证具有良好的弧度
- 完善的一体化管理确保银线优秀的批次稳定性
- Advanced microalloy smelting technology ensures excellent pellet-forming stability and oxidation / sulfurization resistance during silver wire bonding
- Short heat affected zone (HAZ) ensures good radian
- Perfect integrated management to ensure excellent stability of each batch silver wire

## 产品规格 Specification

Type	Dia. mm	Dia. Mil	Tensile strength (gm)	Elongation (%)	Conductor IACS	Spool Color
YPE 01	0.015	0.6	4 6	5 10	101.0	Red
YPE 01	0.018	0.7	6 10	6 12	101.0	Red
YPE 01	0.020	0.8	7 11	8 14	101.0	Blue
YPE 01	0.023	0.9	8 14	10 16	101.1	Yellow
YPE 01	0.025	1.0	9 15	10 16	101.1	Black
YPE 01	0.030	1.2	12 22	12 20	101.2	White
YPE 01	0.032	1.3	14 24	12 20	101.2	Blue
YPE 01	0.038	1.5	18 30	12 20	101.5	Green
YPE 01	0.042	1.7	30 40	12 22	101.5	Purple
YPE 01	0.050	2.0	40 55	15 25	101.5	Brown

## 键合银线优秀性能 Excellent Performance for Our Bonding Silver Wire

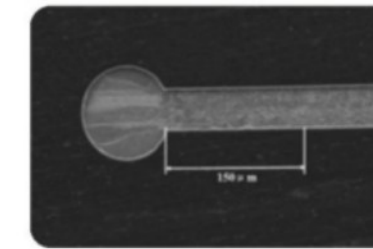
- 通过添加微量元素，增加了银线的稳定性和焊点剪切力和拉力
- 银线质量稳定提高了生产效率
- 短的热影响区长度避免了球颈部断裂
- By adding trace elements, the stability of silver wire and the shear force and tension of solder joints are increased
- The stable quality of silver wire improves the production efficiency
- The short heat-affected zone long distance prevents the ball neck from breaking



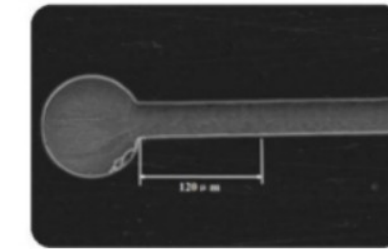
一普银线第一焊点均匀的内部组织  
The internal organization of the first solder spot is uniform



一普银线稳定的第二焊点  
The internal organization of the second solder spot is uniform



同类产品热影响区  
other's product



一普银线热影响区  
our product

一普银线具有短的热影响区长度  
Short heat affected zone(HAZ)of our silver wire





## 合金线 Alloy Wire

- 精湛的合金熔炼工艺和生产管理，保证合金优秀的稳定性
- 键合金线的优秀替代产品，广泛应用于LED、高密度封装等领域
- 稳定的成球一致性和第二焊点一致性
- 第二焊点适应性广
- 高强度有助于提高第一焊点力学性能
- Exquisite alloy smelting technology and production management, to ensure excellent stability of alloy wire
- Excellent replacement of bonding alloy wire which widely used in LED and high density packaging fields
- Stable ball forming consistency and consistency of second solder joint
- The second solder joint is characterized by wide adaptability
- The high strength helps to improve the mechanical properties of the first solder joint

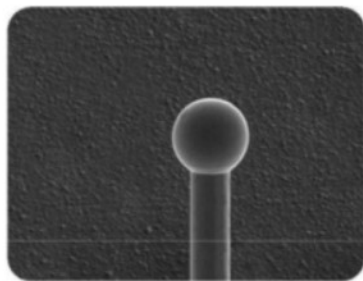
## 产品规格 Specification

Type	Dia. mm	Dia. Mil	Tensile strength (gm)	Elongation (%)	Spool Color
YPA	0.015	0.6	4 9	2 8	Red
YPA	0.018	0.7	5 11	3 10	Red
YPA	0.020	0.8	7 13	4 12	Blue
YPA	0.023	0.9	8 14	4 12	Yellow
YPA	0.025	1.0	10 16	4 12	Black

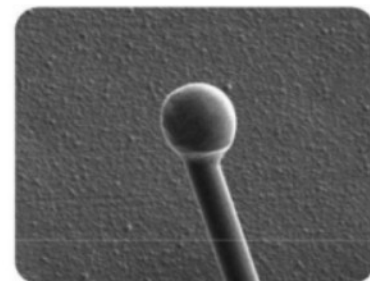
注：合金线为银基合金，其中银含量约为95%、88%等规格

PS: Alloy wire is silver based, with silver content of about 95%, 88% and other specifications

- 一普合金线优化稳定的合金成分保证了成球的均匀性
- The optimized and stable alloy composition of our alloy wire ensures the uniformity of pellet formation



一普合金线第一焊点成球均匀

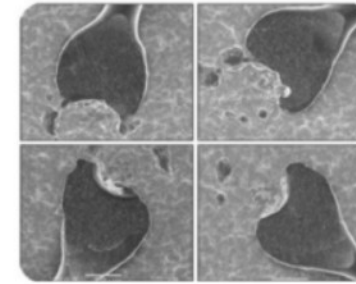


普通合金线第一焊点高尔夫球现象

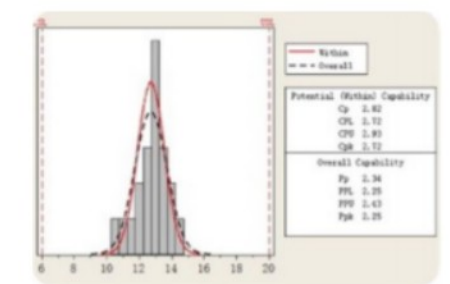
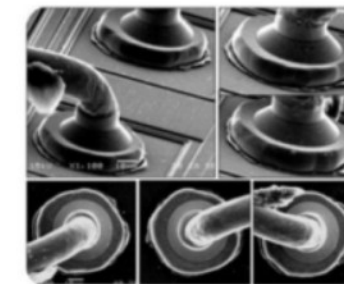


一普合金线稳定的第一焊点形状

- 一普合金线优化稳定的合金成分提高了焊点形状的稳定性和第二焊点稳定的拉力
- 一普合金线优秀的性能可以在更多方面替代键合金线
- The alloy wire optimizes the stable alloy composition to improve the stability of the solder joint shape and ensure the stable tension of the second solder joint
- The excellent performance of alloy wire can replace the bond alloy wire in more aspects



合金线优秀的焊接性能  
Excellent welding performance of our alloy wire



合金线优秀的第二焊点拉力(1.0mi1)  
The excellent tension of the second solder joint(1.0mi1)

