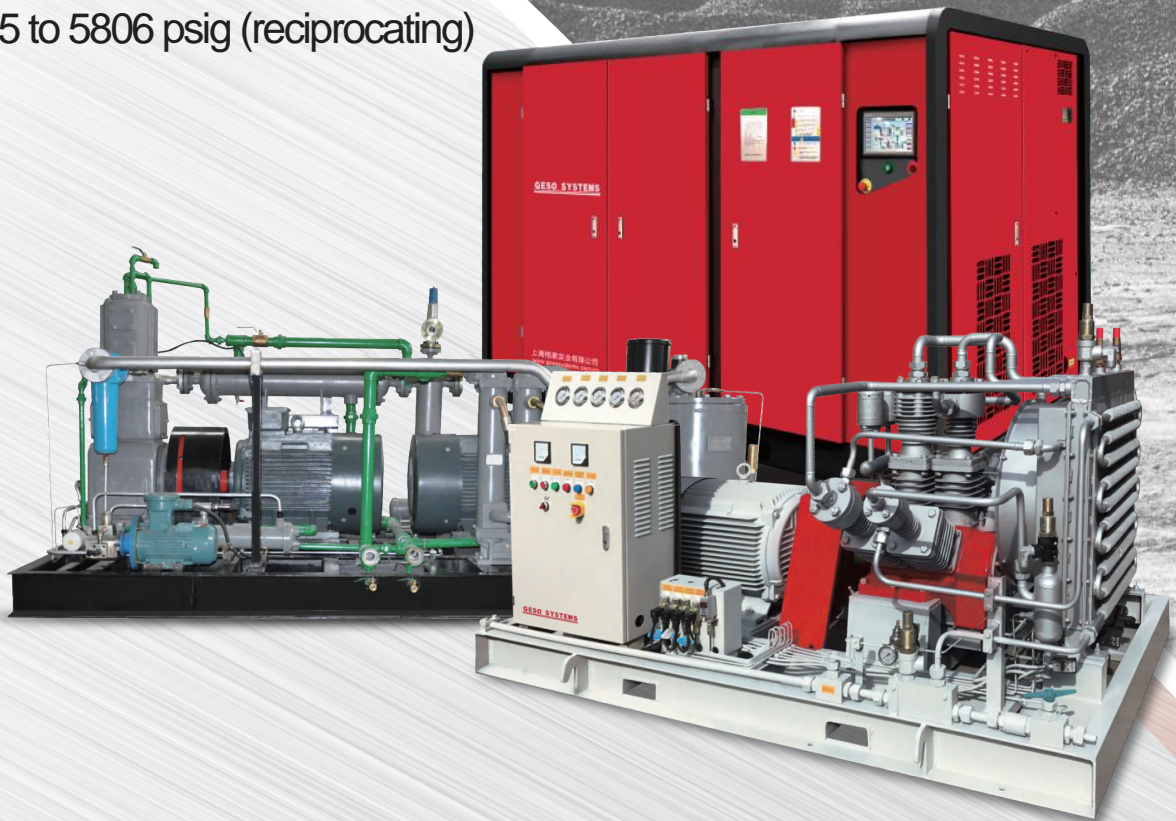


Medium And High  
***PRESSURE***  
***AIR COMPRESSOR***

Pressures from:

- 232 to 580 psig (screw)
- 435 to 5806 psig (reciprocating)



**Shanghai Geso Systems Industrial PLC**

— ***Medium and High Pressure Screw Air Compressor***

- . Medium and High Pressure Screw Air Compressor
- . Medium and High Pressure Frequency Conversion Screw Air Compressor
- . Medium and High Pressure (Booster) Reciprocating Air Compressor

— ***Air compressor installation and maintenance***

P05

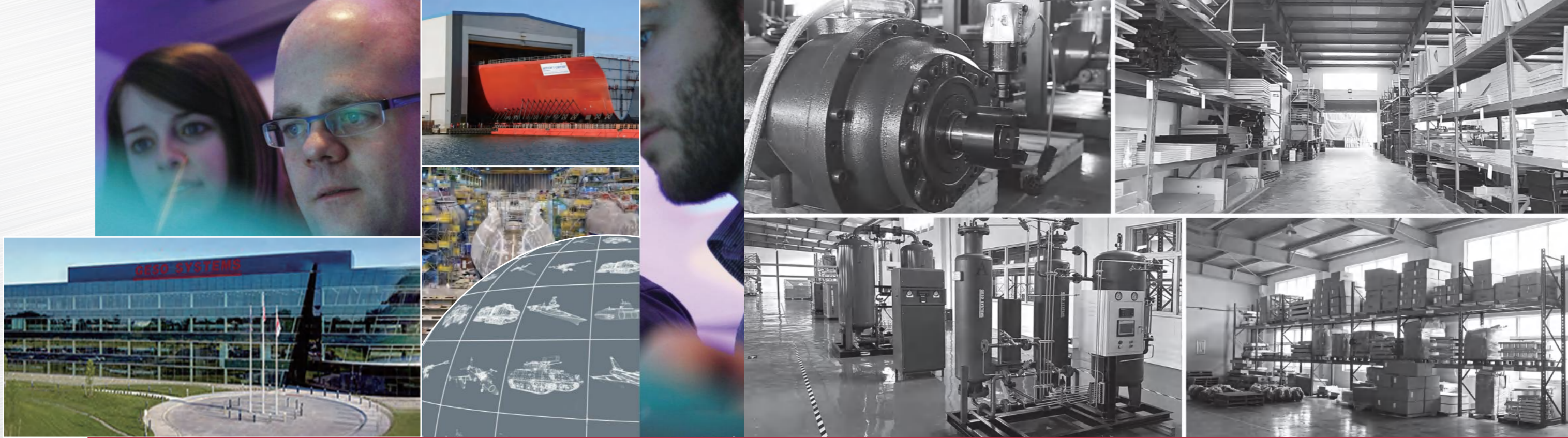
P07

P09

P13







## Company Profile

### Superior Quality and Intelligent Future

Geso is a global aerodynamic systems group of companies, wholly owned by BAE GESO SYSTEMS, headquartered in London, United Kingdom, and a leader in the European gases sector.

BAE Systems, the parent company of Geso Group, was founded in 1871 and is committed to the research, development and production of industrial gases. In 2002, BAE Systems set up a representative office in China, importing products from the United Kingdom to China and deploying after-sales service offices in China, and in 2018 BAE Systems established a wholly-owned company "Shanghai Geso systems Industrial PLC" and invested 11 million U.S. dollars to build an intelligent production and manufacturing center. In R&D, production and market expansion. Our products include energy-saving screw air compressors, nitrogen/oxygen generators, dry oil-free air compressors, water-injected oil-free air compressors, mobile air compressors, process gas compressors, medium and high pressure screw air compressors, centrifugal air compressors, etc, which are widely used in various industrial production. The group has three companies, "Shanghai Geso systems Industry PLC", "Jiangsu Geso Equipment Co.Ltd.", "Shanghai Geso Energy Equipment Co.Ltd." more than 30 branches and offices and more than 200 distributors nationwide, providing high-quality intelligent and energy-saving air compressor system solutions for various industries energy-saving programs to reduce users' cost of use to ensure users' satisfaction and energy-saving effect. We have been selected as one of the top ten brands for three consecutive years by third-party organizations such as China Brand Network. As a global aerodynamic system.



# GESO SYSTEMS

Inheriting the advanced technology and production management mode of BAE Systems and combining it with China's market demand in order to ensure the production safety of users, Geso Group strictly follows the product development process of the Group, and each new product undergoes 40 test items and 3,000 hours of durability test to ensure the quality of the products from the source. Selecting IE5 energy-saving motors, ABB electronic control system, and three-stage frequency conversion energy-saving system to reduce energy consumption and CO2 emissions, meanwhile, through the optimized design and lowering the speed of the machine, it saves the cost for the customers and realizes small investment and big power. Self-developed intelligent Internet of Things (IoT) technology realizes convenient interconnected management with air compressors through computers, cell phones and iPads to realize automatic and precise supply and meet the experience of unattended automation.

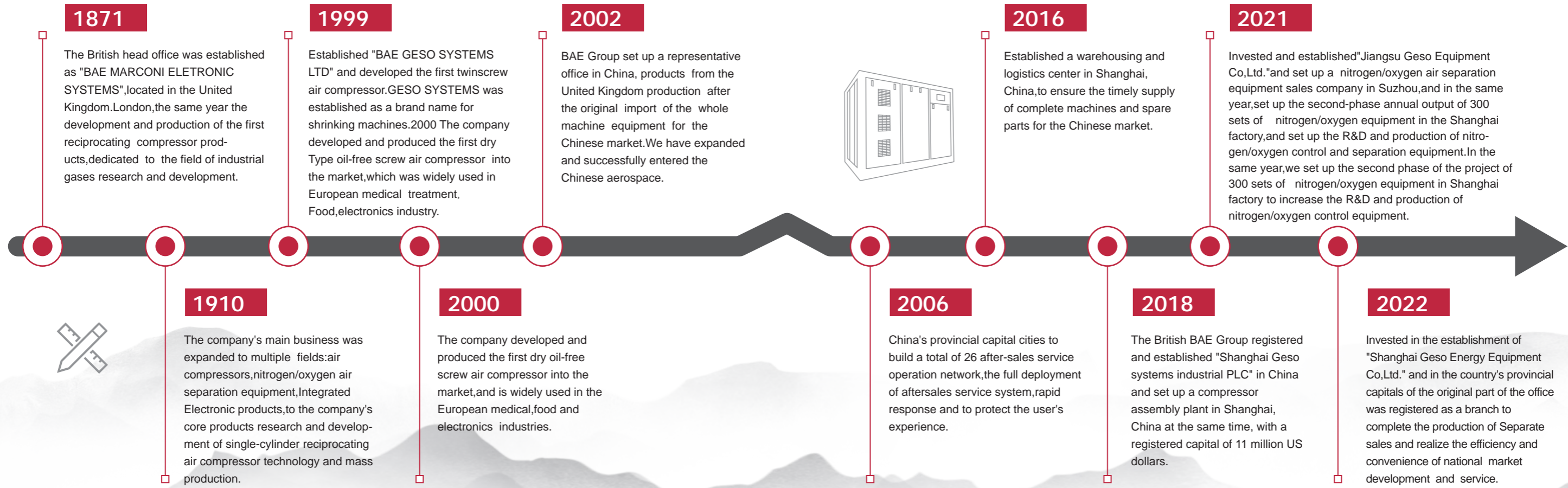
As a wholly foreign-owned enterprise, it is also the authorized production and assembly base of screw compressors for BAE Systems in UK. We have obtained ISO9001 quality system certification, ISO45001 occupational health and safety management system certification, ISO14001 environmental management system certification, certificate 0 oil-free certification, EU CE certification, energy efficiency certification of air compressors, 3A integrity system certification and other certificates, which fully guarantee the safety of users.

Through years of high-speed development, Geso Group has service outlets in more than 200 cities across the country, 24-hour service hotline response and internet warranty service, and thirteen direct spare parts warehouses to provide customers with repair services in a more rapid and timely manner. After-sales service is not limited to the product itself, but also includes compressed air system system testing and optimization, air compressor intelligent air supply control, waste heat recovery, frequency conversion energy-saving piping, cables, construction of turnkey projects and a series of complete set of systematic services. Based on our service concept we promise lifelong. We are exempt from labor charges, provide free training services for customers, regularly test the data of users' energy efficiency reports, and develop group of companies, we carry the mission of innovation, quality and service. Whether it is energy saving and environmental protection or intelligent, always adhere to the praise of customer experience as the center of the hard working people. Geso, to build a globally recognized brand of fluid machinery, and continue to be the industry leader in high-end energysaving products.





# Milestones



# Certificates



CE certiate-EMC

CERT IND-PC-C2108017

CE certiate-MD

CERTIFICATES



# Medium and High Pressure Screw Air Compressor

It is widely used in industrial production industry for high pressure air tightness testing, high pressure air supply for military machinery, chemical industry, petroleum, PET/PP bottle blowing industry and so on. At present, most of the domestic and even international reciprocating piston air compressors are used, which have high vibration, high noise, high energy consumption, difficult maintenance, high failure rate, etc. so that users can not realize safe and stable production. The R&D team of Geso group has launched the Dual drive screw air compressor, which solves the problems of reciprocating piston air compressor, and has been recognized and trusted by the majority of users in many years of application.



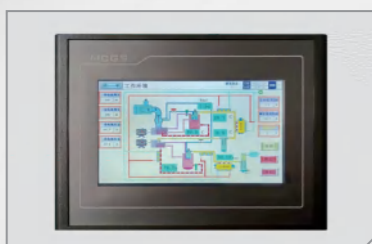
### Efficient dual-drive system

- Geso independent research and development of dual elements, respectively, single-screw compressor element + twin-screw compressor element, so that the product performance is more stable, lower energy consumption.
- The use of Geso design BAES rotor profile, maximize the screw compression efficiency high precision
- Dual elements processing technology, element vibration is small, low noise SKF heavy-duty bearings with high stiffness rotors ensure long term use and more durable life



### Dual permanent magnet variable frequency motor

- IE5 high-efficiency dual permanent magnet dual inverter drive enables users to save more energy
- Specially designed for the working condition of air compressor, suitable for poor working environment
- Adjust the motor speed according to the air consumption in real time, maintain the system pressure constant
- IP55 protection level, samarium cobalt high energy accumulation magnet, high temperature resistant 180 °C



### Intelligent control systems

- Data detection + visualization AI intelligent control, can realize multiple equipment joint control, unattended, remote control
- Cell phone, computer real-time display of the operating state reduce operating costs
- Standardized design, professional wiring: reasonable, simple, clear, conducive to the maintenance of Schneider or Siemens high-compatibility series components, the use of safe and secure



### Built-in oil separator design

- The whole series of sub-master oil separator core adopts folding type, increasing the separation area, small pressure difference and prolonging the service life.
- Simple design of sub-master oil separation for easy maintenance
- Sub-master oil separation design program, reducing the oil content at the compressor outlet.



### Self-designed air filters

- Self-developed customized filter media, made of cellulose synthetic blends
- Dual-layer sub-master air filters for up to 99.99% filtration and increased service life
- Equipped with differential pressure detection, maintenance reminder function, to ensure stable operation of the equipment



### Built-in purification system

- The product has an internal purification device to reduce the moisture content of compressed air
- The product export dust removal effect can reach 0.01um
- Supply gas export temperature is over than 25 °C, the oil content is less than 0.01ppm

### High-intensity cooling design



- Aluminum plate-fin heat exchange air-cooled cooler, corrosion-resistant aluminum alloy material, cooling material to add a special alloy material to ensure the hardness of the cooler
- Tube-type water-cooled cooler, high heat transfer coefficient between the outer membrane of the tube, strong ability of anticontamination
- Extra-large oil cooler design: even in high temperature and dusty environment, the lubricating oil temperature can be in the normal range, ensuring safer use of air compressor in summer



## Technical Parameter

Model	Motor Power (KW)	Working Pressure (Mpa)	Air Delivery (m³/min)	Dimensions L*W*H (mm)			Outlet Pipe Diameter	Weight (kg)
BAEG-37APM	23	1.6	3.5	1810	1200	1550	DN25	1200
	26	2.0						
	30	2.5						
	33	3.0						
	35	3.5						
	37	4.0						
BAEG-45APM	26	1.6	4.5	1810	1200	1550	DN25	1280
	30	2.0						
	33	2.5						
	37	3.0						
	40	3.5						
	45	4.0						
BAEG-55APM	33	1.6	6.0	2300	1600	1820	DN40	1800
	37	2.0						
	40	2.5						
	45	3.0						
	50	3.5						
	55	4.0						
BAEG-75APM	52	1.6	8.5	2500	1760	1800	DN40	2000
	60	2.0						
	65	2.5						
	70	3.0						
	72	3.5						
	75	4.0						
BAEG-90APM	59	1.6	10	3100	1860	2010	DN50	2500
	67	2.0						
	74	2.5						
	80	3.0						
	85	3.5						
	90	4.0						
BAEG-110 A(W)PM	75	1.6	12	3100	1860	2010	DN50	3000
	82	2.0						
	90	2.5						
	95	3.0						
	105	3.5						
	110	4.0						

Note: A:Air-cooled W:Water-cooled

The Company Has The Right To Change The Design For The Continuous Improvement Of The Products,and The Parameters Will Be Changed Without Prior Notice.

## Technical Parameter

Model	Motor Power (KW)	Working Pressure (Mpa)	Air Delivery (m³/min)	Dimensions L*W*H (mm)			Outlet Pipe Diameter	Weight (kg)
BAEG-130 A(W)PM	80	1.6	14	3100	1860	2010	DN50	3200
	90	2.0						
	110	2.5						
	120	3.0						
	125	3.5						
	130	4.0						
BAEG-150 A(W)PM	85	1.6	16	3100	1860	2010	DN50	3310
	90	2.0						
	110	2.5						
	130	3.0						
	140	3.5						
	150	4.0						
BAEG-165 WPM	90	1.6	18	3100	1860	2010	DN65	3600
	100	2.0						
	120	2.5						
	140	3.0						
	155	3.5						
	165	4.0						
BAEG-185WPM	110	1.6	20	3500	2000	2300	DN65	3900
	120	2.0						
	150	2.5						
	165	3.0						
	175	3.5						
	185	4.0						
BAEG-200WPM	120	1.6	23	3500	1860	2160	DN65	4200
	150	2.0						
	165	2.5						
	175	3.0						
	185	3.5						
	200	4.0						
BAEG-220WPM	150	1.6	25	3500	1860	2160	DN65	4500
	165	2.0						
	175	2.5						
	185	3.0						
	200	3.5						
	220	4.0						

Note: A:Air-cooled W:Water-cooled

The Company Has The Right To Change The Design For The Continuous Improvement Of The Products,and The Parameters Will Be Changed Without Prior Notice.



# Medium and High Pressure Screw Air Compressor

## Technical Parameter

Model	Motor Power (KW)	Working Pressure (Mpa)	Air Delivery (m <sup>3</sup> /min)	Dimensions L*W*H (mm)			Outlet Pipe Diameter	Weight (kg)
BAEG-250WPM	165	1.6	28	3500	1860	2160	DN80	4800
	175	2.0						
	185	2.5						
	200	3.0						
	220	3.5						
	250	4.0						
BAEG-270WPM	175	1.6	30	4500	2300	2400	DN80	5100
	185	2.0						
	200	2.5						
	220	3.0						
	250	3.5						
	270	4.0						
BAEG-315WPM	200	1.6	35	4500	2300	2400	DN80	5500
	220	2.0						
	230	2.5						
	270	3.0						
	290	3.5						
	315	4.0						
BAEG-355WPM	230	1.6	40	4500	2300	2400	DN100	5900
	250	2.0						
	290	2.5						
	315	3.0						
	345	3.5						
	355	4.0						
BAEG-405WPM	280	1.6	45	4500	2300	2400	DN100	6200
	300	2.0						
	325	2.5						
	355	3.0						
	385	3.5						
	405	4.0						
BAEG-450WPM	325	1.6	50	4500	2300	2400	DN150	6800
	345	2.0						
	365	2.5						
	415	3.0						
	435	3.5						
	450	4.0						
BAEG-500WPM	385	1.6	55	5000	2400	2500	DN200	7200
	415	2.0						
	445	2.5						
	465	3.0						
	480	3.5						
	500	4.0						

Note: A:Air-cooled W:Water-cooled

The Company Has The Right To Change The Design For The Continuous Improvement Of The Products, and The Parameters Will Be Changed Without Prior Notice.

## Technical Parameter

Model	Motor Power (KW)	Working Pressure (Mpa)	Air Delivery (m <sup>3</sup> /min)	Dimensions L*W*H (mm)			Outlet Pipe Diameter	Weight (kg)
BAEG-550WPM	435	1.6	60	5000	2400	2500	DN200	7500
	465	2.0						
	485	2.5						
	510	3.0						
	540	3.5						
	550	4.0						
BAEG-600WPM	485	1.6	65	5000	2400	2500	DN200	7900
	500	2.0						
	540	2.5						
	560	3.0						
	580	3.5						
	600	4.0						
BAEG-650WPM	560	1.6	70	6000	2400	2800	DN250	8400
	580	2.0						
	590	2.5						
	620	3.0						
	640	3.5						
	650	4.0						
BAEG-700WPM	600	1.6	75	6000	2400	2800	DN250	8700
	630	2.0						
	650	2.5						
	660	3.0						
	680	3.5						
	700	4.0						
BAEG-750WPM	630	1.6	80	6000	2400	2800	DN300	9000
	650	2.0						
	660	2.5						
	680	3.0						
	700	3.5						
	750	4.0						
BAEG-800WPM	680	1.6	85	6000	2400	2800	DN300	9500
	700	2.0						
	730	2.5						
	750	3.0						
	780	3.5						
	800	4.0						
BAEG-850WPM	750	1.6	90	6000	2400	2800	DN300	9800
	760	2.0						
	790	2.5						
	810	3.0						
	830	3.5						
	850	4.0						

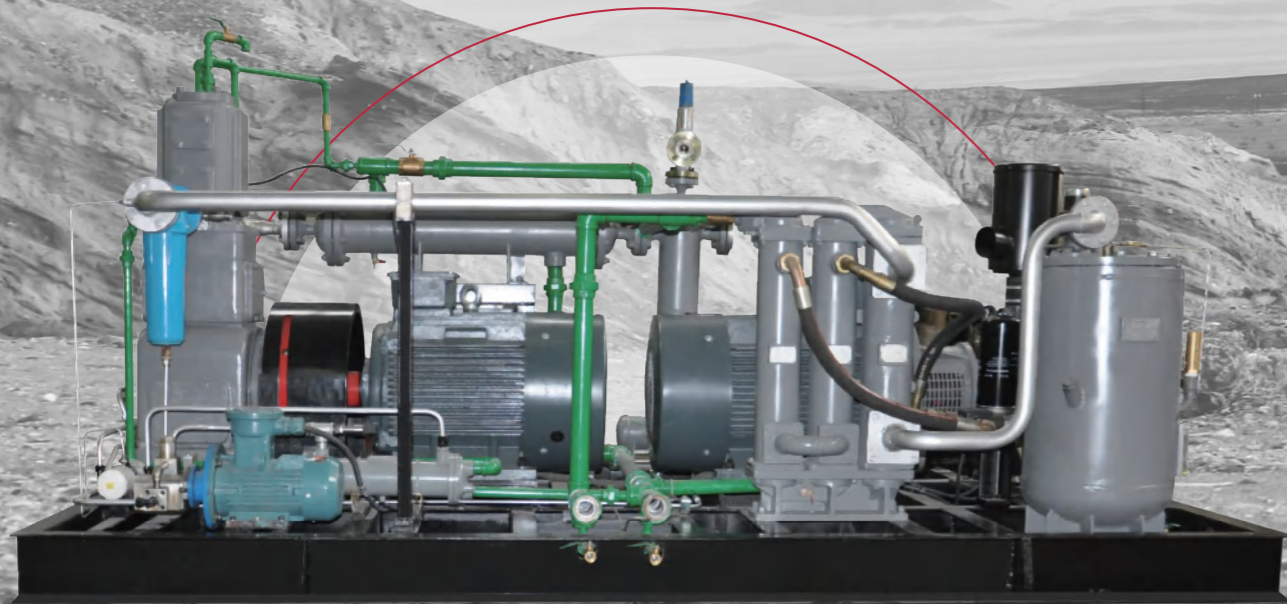
Note: A:Air-cooled W:Water-cooled

The Company Has The Right To Change The Design For The Continuous Improvement Of The Products, and The Parameters Will Be Changed Without Prior Notice.



# Medium and High Pressure Reciprocating Air Compressor

Geso medium and high pressure reciprocating BG series air compressors are available in four categories: skid-mounted, mobile, electric, diesel (oil), mainly used in oil extraction in pipeline pressure testing, sweeping line, membrane nitrogen, thermal mining, coal, gas supply station and other engineering projects, and its performance is excellent.



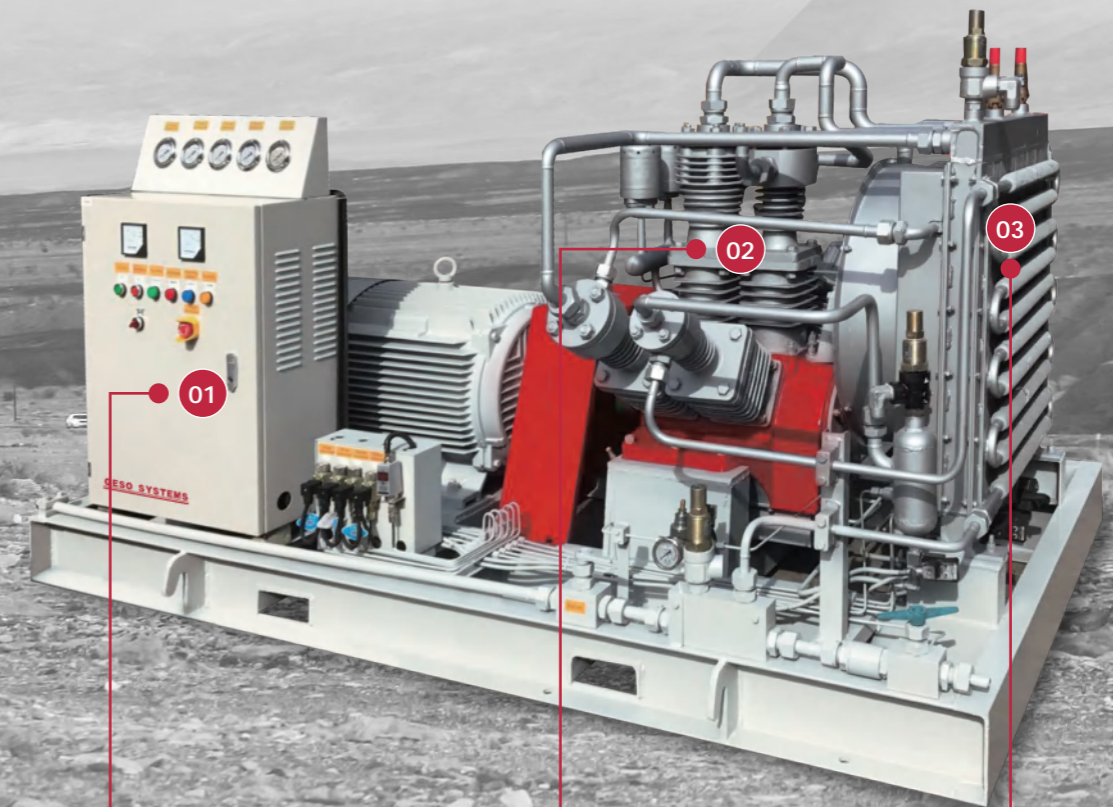
Geso medium and high pressure reciprocating BG series air compressor has been recognized and trusted by the majority of users for its stable performance and durability.

## Product Features

Designed for low pressure, medium pressure, high pressure and ultra-high pressure according to different working conditions, the exhaust volume of the piston compressor remains unchanged when the exhaust pressure fluctuates at equal rotational speeds.

**Simple structure:** Easy to move, operate and maintain.

**High compression efficiency:** The process of compressing gas in a piston compressor is a closed system with high compression efficiency.



Adopting the original British Geso pressure controller.



Three-stage compressor in the two or three-stage compressor are used in differential compression (the same piston to complete the two or three-stage compression for exhaust), compression process of the two or three-stage piston end face offset each other. Piston force up to 30%, thus saving energy.



Equipped with high efficiency heat exchanger, its cooling area is increased 2.5 times, and the heat exchange efficiency can reach 98% (the temperature of compressed air after cooling is normal temperature), which is especially suitable for the operation in high temperature areas.





# Medium and High Pressure Reciprocating Air Compressor

## Technical Parameter

Model	Air Delivery (m³/min)	Working Pressure (Mpa)	Moter Power (KW)	Compression stages	Transmission mode	Weight (kg)	Remark
BG-0.6/30	0.6	3	7.5	2 -stage	Belt	325	With gas storage tank or fixed
BG-0.7/30	0.7	3	7.5	2 -stage	Belt	325	With gas storage tank or fixed
BG-0.8/30	0.8	3	7.5	2 -stage	Belt	330	With gas storage tank or fixed
BG-1.0/30	1	3	11	2 -stage	Belt	430	
BG-1.3/30	1.3	3	15	2 -stage	Belt	460	
BG-2.6/30	2.6	3	2*15	2 -stage	Belt	1050	Fixed combinations
BG-2.3/30	2.3	3	22	2 -stage	Belt	750	
BG-4.6/30	4.6	3	2*22	2 -stage	Belt	1550	Fixed combinations
BG-6.9/30	6.9	3	3*22	2 -stage	Belt	2200	Fixed combinations
BG-0.8/40	0.8	4	11	3 -stage	Belt	550	With gas storage tank
BG-1/40	1.0	4	11	3 -stage	Belt	550	With gas storage tank
BG-2/40	2.0	4	22	3 -stage	Belt	850	
BG-2.2/40	2.2	4	22	3 -stage	Belt	850	
BG-4/40	4.0	4	2*22	3 -stage	Belt	1850	Fixed combinations
BG-4.4/40	4.0	4	2*22	3 -stage	Belt	1850	Fixed combinations
BG-3/40	3.0	4	3*11	3 -stage	Belt	1350	Fixed combinations
BG-6/40	6.0	4	3*22	3 -stage	Belt	2700	Fixed combinations
BG-0.6/60	0.6	6	11	3 -stage	Belt	550	With gas storage tank
BG-0.8/60	0.8	6	11	3 -stage	Belt	550	With gas storage tank
BG-1.2/60	1.2	6	2*11	3 -stage	Belt	1000	Fixed combinations
BG-1.6/60	1.6	6	2*11	3 -stage	Belt	1000	Fixed combinations
BG-2/60	2.0	6	3*11	3 -stage	Belt	1350	Fixed combinations
BG-3/60	3.0	6	37	3 -stage	Direct connect	2200	

**Note:** Multi-unit is 1 row in series, if you need to change the size, it can be arranged into 2 rows, the size is arranged separately according to the demand; special models can provide customized service.

The company has the right to change the design for the continuous improvement of the products, and the parameters will be changed without prior notice.

## Technical Parameter

Model	Air Delivery (m³/min)	Working Pressure (Mpa)	Moter Power (KW)	Compression stages	Transmission mode	Weight (kg)	Remark
BG-0.7/70	0.7	7	11	3 -stage	Belt	550	
BG-1.2/70	1.2	7	2*11	3 -stage	Belt	1000	Fixed combinations
BG-3/80	3.0	8	45	4 -stage	Direct connect	2300	
BG-0.8/250	0.8	25	18.5	4 -stage	belt	1100	boxed
BG-5.5/100	5.5	10	75	4 -stage	Direct connect	2600	
BG-1.7/150	1.7	15	30	4 -stage	Direct connect	900	
BG-5/150	5.0	15	75	4 -stage	Direct connect	2600	
BG-1.5/250	1.5	25	30	4 -stage	Direct connect	900	
BG-5/250	5.0	25	75	4 -stage	Direct connect	2600	
BG-4/250	4.0	25	75	4 -stage	Direct connect	2500	
BG-0.1/300	0.1	30	2.2	4 -stage	belt	40	
BG-0.1/300	0.1	30	Gasoline engine	4 -stage	belt	39	Gasoline engine:HONDAGX160
BG-0.2/300	0.2	30	4	3 -stage	belt	150	
BG-0.3/300	0.3	30	5.5	3 -stage	belt	160	
BG-0.4/300	0.4	30	7.5	3 -stage	belt	180	
BG-0.8/300	0.8	30	18.5	4 -stage	belt	1100	
BG-1/300	1.0	30	30	4 -stage	Direct connect	1000	
BG-1/350	1.0	35	30	4 -stage	belt	1800	Advanced Configuration
BG-1.5/350	1.5	35	37	4 -stage	belt	1900	Advanced Configuration
BG-2/350	2.0	35	45	5 -stage	Direct connect	2500	
BG-3/350	3.0	35	55	5 -stage	Direct connect	2600	
BG-1/400	1.0	40	30	5 -stage	belt	2200	
BG-2/400	2.0	40	55	5 -stage	Direct connect	2500	

**Note:** Multi-unit is 1 row in series, if you need to change the size, it can be arranged into 2 rows, the size is arranged separately according to the demand; special models can provide customized service.

The company has the right to change the design for the continuous improvement of the products, and the parameters will be changed without prior notice.



## Domestic Office Locations in China

Region:	Province:	Address:
Northeast Region	Heilongjiang Province	Intersection of Republican Road and Shijiao Road, Hulan District, Harbin City,
	Liaoning Province	113 Nanjing North Street, Heping District, Shenyang City, Liaoning Province
Eastern China	Shanghai	No. 15, Lane 38, Caoli Road, Jinshan District, Shanghai
	Zhejiang Province	Room 8609, 6th Floor, Building 3, JinJulong Building, No. 9 Gaohu Road, Jiangning District, Nanjing City, Jiangsu Province
	Jiangsu Province	Room 307, No. 58 Huyang Road, Hushuguan Town, Huqiu District, Suzhou City, Jiangsu Province
	Anhui Province	No.1 Heping Road, Development Zone, Chizhou City, Anhui Province
	Shandong Province	1912, East Unit, Building 4, Lemeng Center, Huaiyin District, Jinan City, Shandong Province
	Jiangxi Province	Guangzhou Road East China International Industrial Expo City, Qingyunpu District, Nanchang City, Jiangxi Province
	Fujian Province	G324 National Highway Qianjin Xijing Yili, Houxi Town, Jimei District, Xiamen City, Fujian Province
North China	Beijing	Room 1204, Building 10, Junyue International, Daxing District, Beijing
	Tianjin	
	Shanxi Province	
	Hebei Province	
Central China	Inner Mongolia	Room 204, Unit 2, Building 11, Yurong Guandi, Shahe West Street, Jiuyuan District, Baotou City, Inner Mongolia Autonomous Region
	Henan Province	No.39, 3rd Floor, Greenland Yuansheng International 3C, Jinshui District, Zhengzhou City, Henan Province
	Hubei Province	Room 1304, Unit 1, Building 16, Vision Cheng B, Jiangjun Road Street, Dongxihu District, Wuhan City, Hubei Province
South China	Hunan Province	268 Wanjiali Road, Yuhua District, Changsha City, Hunan Province
	Guangdong Province	Room 1504, Block B, Aoyuan Central Plaza, Jingang Avenue, Nansha District, Guangzhou City, Guangdong Province
	Guangxi Province	
Taiwan Province		
Southwest of China	Chongqing	1801, Building 8, City Garden, Yubei District, Chongqing
	Tibet	
	Yunnan Province	Science and Technology Innovation Park, No. 3 Jingkai Road, Kunming Economic Development Zone
	Guizhou Province	Building 2, Financial Street, Nanming District, Guiyang City, Guizhou Province
	Sichuan Province	Building 9, Wanjingfeng Phase II, No. 8 Shangya Road, High tech West Zone, Chengdu City
Northwest of China	Shanxi Province	Room 20707, Building 1, Lijun V, Fengcheng 1st Road and Weiyang Road, Weiyang District, Xi'an City, Shaanxi Province
	Qinghai Province	
	Gansu Province	Inside the Yongding Center Market in Anding District, Dingxi City, Gansu Province
	Ningxia Province	Building 4, South District of Helan Red River Valley, Yinchuan, Ningxia
	Xinjiang Uygur Autonomous Region	556 Beijing South Road, Xinshi District, Urumqi, Xinjiang

Version number: 202310 Shanghai Gesu Industrial Co., Ltd. All rights reserved.  
 All mentioned trademarks, product names, company names, trademarks, and service marks belong to their respective owners.  
 In the spirit of innovation, the company will continuously optimize its products. Therefore, we reserve the right to modify product specifications without prior notice.  
 Components may be replaced with no lower than the same grade, and the actual product shall prevail.

# GESO SYSTEMS

**Shanghai Geso Systems Industrial PLC**

Address: No. 15, Lane 38, Cao Li Road, Jinshan District, Shanghai, China

Website: [www.gesosystems.net](http://www.gesosystems.net) TEL: +86 21- 57895398