

Domestic Office Locations in China

Region:	Province:	Address:
Northeast Region	Heilongjiang Province	Intersection of Republican Road and Shijiao Road, Hulan District, Harbin City,
	Liaoning Province	113 Nanjing North Street, Heping District, Shenyang City, Liaoning Province
	Shanghai	No. 15, Lane 38, Caoli Road, Jinshan District, Shanghai
Eastern China	Zhejiang Province	Room 8609, 6th Floor, Building 3, JinJulong Building, No. 9 Gaohe Road, Jiangning District, Nanjing City, Jiangsu Province
	Jiangsu Province	Room 307, No. 58 Huyang Road, Hushuguan Town, Huqiu District, Suzhou City, Jiangsu Province
	Anhui Province	No.1 Heping Road, Development Zone, Chizhou City, Anhui Province
	Shandong Province	1912, East Unit, Building 4, Lemeng Center, Huaiyin District, Jinan City, Shandong Province
	Jiangxi Province	Guangzhou Road East China International Industrial Expo City, Qingyunpu District, Nanchang City, Jiangxi Province
	Fujian Province	G324 National Highway Qianjin Xijing Yili, Houxi Town, Jimei District, Xiamen City, Fujian Province
North China	Beijing	
	Tianjin	Room 1204, Building 10, Junyue International, Daxing District, Beijing
	Shanxi Province	
	Hebei Province	
Central China	Inner Mongolia	Room 204, Unit 2, Building 11, Yurong Guandi, Shahe West Street, Jiuyuan District, Baotou City, Inner Mongolia Autonomous Region
	Henan Province	No.39, 3rd Floor, Greenland Yuansheng International 3C, Jinshui District, Zhengzhou City, Henan Province
	Hubei Province	Room 1304, Unit 1, Building 16, Vision Cheng B, Jiangjun Road Street, Dongxihu District, Wuhan City, Hubei Province
South China	Hunan Province	268 Wanjiaili Road, Yuhua District, Changsha City, Hunan Province
	Guangdong Province	
	Guangxi Province	Room 1504, Block B, Aoyuan Central Plaza, Jingang Avenue, Nansha District, Guangzhou City, Guangdong Province
	Taiwan Province	
Southwest of China	Chongqing	1801, Building 8, City Garden, Yubei District, Chongqing
	Tibet	
	Yunnan Province	Science and Technology Innovation Park, No. 3 Jingkai Road, Kunming Economic Development Zone
	Guizhou Province	Building 2, Financial Street, Nanming District, Guiyang City, Guizhou Province
Northwest of China	Sichuan Province	Building 9, Wanjiangfeng Phase II, No. 8 Shangya Road, High tech West Zone, Chengdu City
	Shanxi Province	Room 20707, Building 1, Lijun V, Fengcheng 1st Road and Weiyang Road, Weiyang District, Xi'an City, Shaanxi Province
	Qinghai Province	
	Gansu Province	Inside the Yongding Center Market in Anding District, Dingxi City, Gansu Province
	Ningxia Province	Building 4, South District of Helan Red River Valley, Yinchuan, Ningxia
	Xinjiang UygurAutonomous Region	556 Beijing South Road, Xinshi District, Urumqi, Xinjiang

Version number: 202310. Shanghai Gesu Industrial Co., Ltd. All rights reserved.
 All mentioned trademarks, product names, company names, trademarks, and service marks belong to their respective owners.
 In the spirit of innovation, the company will continuously optimize its products. Therefore, we reserve the right to modify product specifications without prior notice.
 Components may be replaced with no lower than the same grade, and the actual product shall prevail.

GESO SYSTEMS

GESO BLZ/BAZ SERIES

真空泵

vacuum pump



Shanghai Geso Systems Industrial PLC

GESO SYSTEMS

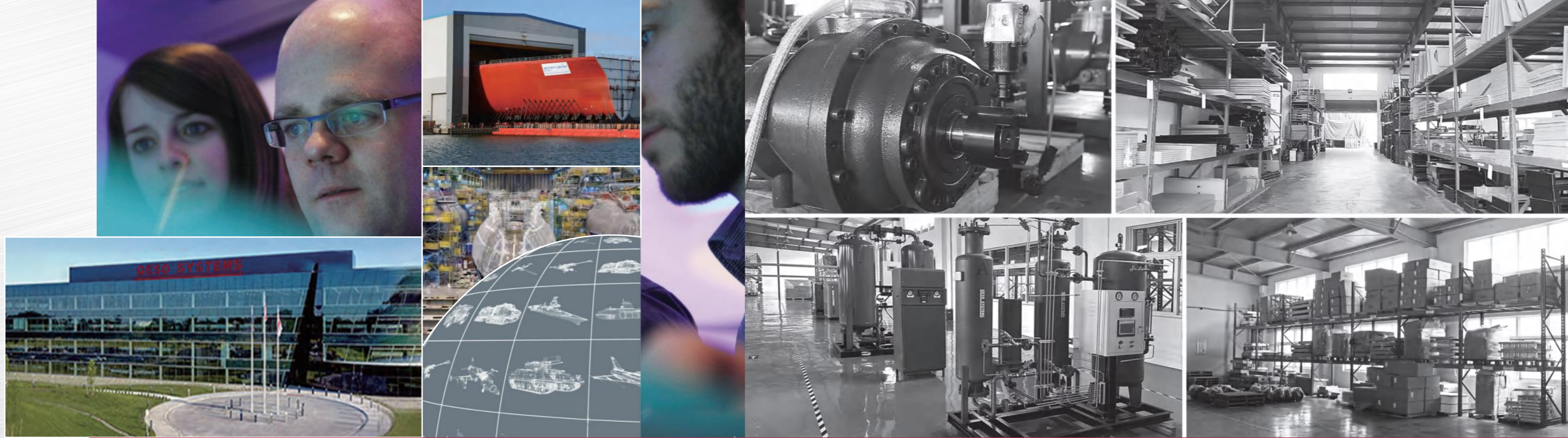
Shanghai Geso Systems Industrial PLC

Address: No.15, Lane 38, Cao Li Road, Jinshan District, Shanghai, China

Website: www.gesosystems.net TEL: +86 21- 57895398

- Dry oil-free screw vacuum pump P05
- Frequency conversion oil-free screw vacuum pumps P09
- Oil lubricated screw vacuum pumps P13
- Slide valve vacuum pumps P15
- Roots vacuum pumps P19
- Air-cooled Roots vacuum pumps P21
- Rotary Vane Vacuum Pumps P22





Company Profile

Superior Quality and Intelligent Future

Geso is a global aerodynamic systems group of companies, wholly owned by BAE GESO SYSTEMS, headquartered in London, United Kingdom, and a leader in the European gases sector.

BAE Systems, the parent company of Geso Group, was founded in 1871 and is committed to the research, development and production of industrial gases. In 2002, BAE Systems set up a representative office in China, importing products from the United Kingdom to China and deploying after-sales service offices in China, and in 2018 BAE Systems established a wholly-owned company "Shanghai Geso systems Industrial PLC" and invested 11 million U.S. dollars to build an intelligent production and manufacturing center. In R&D, production and market expansion. Our products include energy-saving screw air compressors, nitrogen/oxygen generators, dry oil-free air compressors, water-injected oil-free air compressors, mobile air compressors, process gas compressors, medium and high pressure screw air compressors, centrifugal air compressors, etc, which are widely used in various industrial production. The group has three companies, "Shanghai Geso systems Industry PLC", "Jiangsu Geso Equipment Co.Ltd.", "Shanghai Geso Energy Equipment Co.Ltd." more than 30 branches and offices and more than 200 distributors nationwide, providing high-quality intelligent and energy-saving air compressor system solutions for various industries energy-saving programs to reduce users' cost of use to ensure users' satisfaction and energy-saving effect. We have been selected as one of the top ten brands for three consecutive years by third-party organizations such as China Brand Network. As a global aerodynamic system.



GESO SYSTEMS

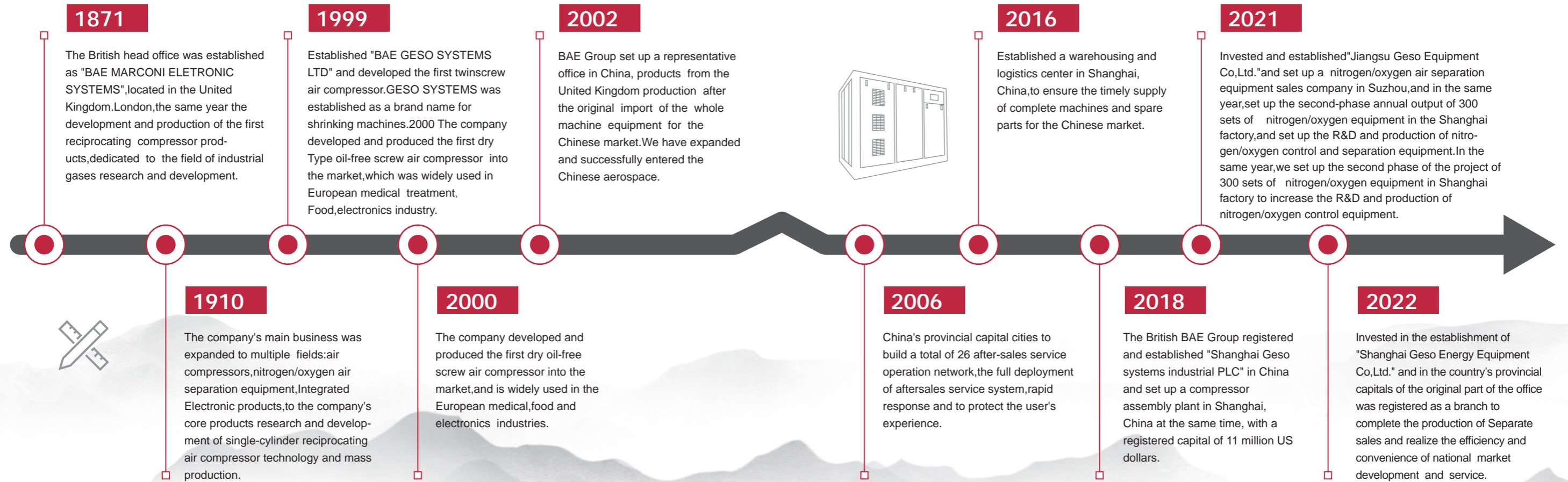
Inheriting the advanced technology and production management mode of BAE Systems and combining it with China's market demand in order to ensure the production safety of users, Geso Group strictly follows the product development process of the Group, and each new product undergoes 40 test items and 3,000 hours of durability test to ensure the quality of the products from the source. Selecting IE5 energy-saving motors, ABB electronic control system, and three-stage frequency conversion energy-saving system to reduce energy consumption and CO2 emissions, meanwhile, through the optimized design and lowering the speed of the machine, it saves the cost for the customers and realizes small investment and big power. Self-developed intelligent Internet of Things (IoT) technology realizes convenient interconnected management with air compressors through computers, cell phones and iPads to realize automatic and precise supply and meet the experience of unattended automation.

As a wholly foreign-owned enterprise, it is also the authorized production and assembly base of screw compressors for BAE Systems in UK. We have obtained ISO9001 quality system certification, ISO45001 occupational health and safety management system certification, ISO14001 environmental management system certification, certificate 0 oil-free certification, EU CE certification, energy efficiency certification of air compressors, 3A integrity system certification and other certificates, which fully guarantee the safety of users.

Through years of high-speed development, Geso Group has service outlets in more than 200 cities across the country, 24-hour service hotline response and internet warranty service, and thirteen direct spare parts warehouses to provide customers with repair services in a more rapid and timely manner. After-sales service is not limited to the product itself, but also includes compressed air system testing and optimization, air compressor intelligent air supply control, waste heat recovery, frequency conversion energy-saving piping, cables, construction of turnkey projects and a series of complete set of systematic services. Based on our service concept we promise lifelong. We are exempt from labor charges, provide free training services for customers, regularly test the data of users' energy efficiency reports, and develop group of companies, we carry the mission of innovation, quality and service. Whether it is energy saving and environmental protection or intelligent, always adhere to the praise of customer experience as the center of the hard working people. Geso, to build a globally recognized brand of fluid machinery, and continue to be the industry leader in high-end energy-saving products.



Milestones



Certificates



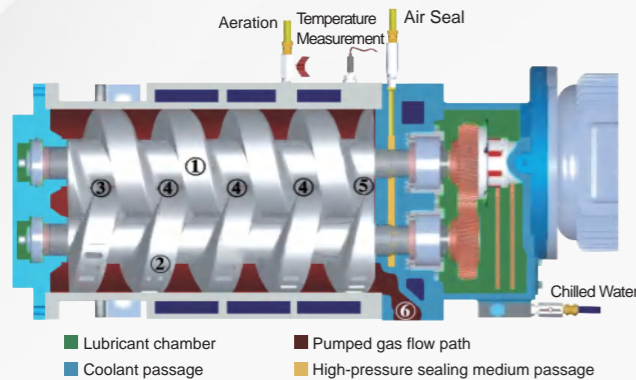
CE certfiate-EMC

CERT IND-PC-C2108017

CE certfiate-MD

CERTIFICATES

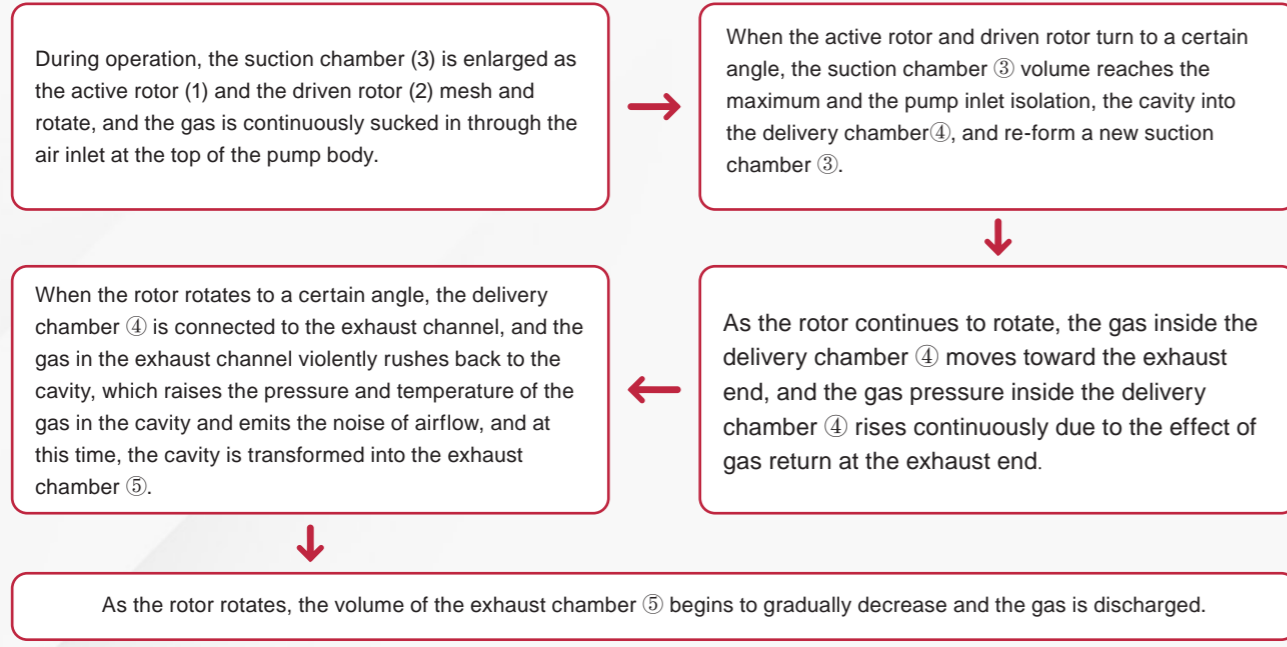
Dry Oil-free Screw Vacuum Pumps



- ① Active Rotor
- ② Driven Rotor
- ③ Suction Chamber (Connected To Air Inlet)
- ④ Delivery Chamber (Separate Enclosed Space)
- ⑤ Exhaust Chamber (Connected To The Exhaust Channel)

Dry Isopitch Screw Vacuum Pumps

Runtime process:



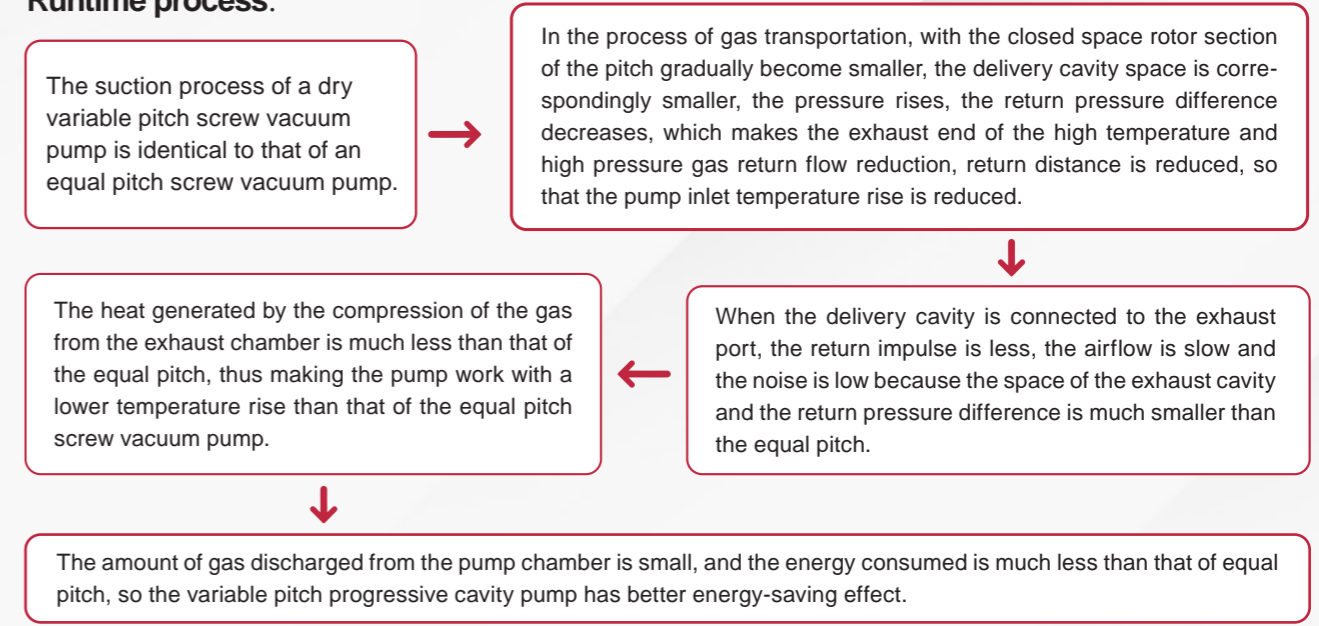
Bearings And Lubrication

- Gearboxes are oil lubricated, thus avoiding frequent maintenance.
- Extended service life with high quality bearings and special oil with low vapor pressure
- Adoption of variable diameter and pitch screw rotor design to achieve continuous compression of gas along the entire rotor, improve temperature control and optimize pumping performance.
- Unique rotor and stator design with closed-loop water-cooled temperature control system to realize the ability to pump fluorine gas at full concentration (0-100%).
- Superb design and manufacturing processes ensure ultimate vacuum performance and low noise operation.
- Versatile profile options, with additional isometric and iso-pitch available.



Dry Variable Pitch Screw Vacuum Pumps

Runtime process:



Performance Characteristics



- 01** The rotor profile meshes evenly, good sealing, high pumping efficiency, the pump cavity parts use gap sealing, no contact friction, small parts loss, prolong service life.
- 02** The pumped gas, process gas recovery and utilization rate is high, the exhaust gas treatment is convenient, and at the same time, it also avoids the emission of oil and grease, and reduces the environmental pollution.
- 03** The temperature inside the pump cavity can reach more than 100°C during the working time, so that the condensable gas is not easy to condense, and the pump cavity is a straight-through structure, the debris inside the cavity can be easily discharged, which is suitable for pumping condensable gas.
- 04** The pump cavity is a gap seal structure, insensitive to a small amount of small particles of dust, and the pump cavity is straight through, no partition structure, dust is not easy to be deposited in the cavity, the use of explosion-proof configurations can be used for pumping out flammable and explosive gases.
- 05** The rotor of the screw pump is tested with G1 level dynamic balance, so that there is little vibration during operation, and the surface of the working chamber and the screw rotor is coated with anticorrosion coating, so that it can be adapted to the harsh working conditions.
- 06** The design of directly connecting multi-stage rotors in series by spiral way, canceling the structure of the middle partition, no intermediate stage suction and exhaust process, simple and continuous working process, high efficiency and stable operation.
- 07** Can be used alone or as a pre-stage pump in combination with Roots pumps, molecular pumps, etc.
- 08** Customized removable and washable mufflers are used for good muffling effect and low noise while easy to dismantle and wash for maintenance.
- 09** High ultimate vacuum, ultimate pressure up to 0.6MPa, no lubricating oil in the working chamber, clean vacuum can be obtained, avoiding the failure due to emulsification and deterioration of lubricating oil, improving the stability of the system and reducing the cost of use.
- 10** Adopting customized motor: fast startup, small startup current, normal pumping speed is reached after opening. Closed structure design between motor and pump oil chamber, canceling the motor end shaft extension dynamic seal, eliminating the problem of oil leakage from the shaft end.

Technical Parameters

Model	Pumping Speed (50/60Hz)			Ultimate Pressure (50/60Hz)			Power (50/60Hz) KW	Speed (50/60Hz) RPM	Inlet Diameter (mm)	Outlet Caliber (mm)	Gear Cavity Volume (L)	Cooling Water Volume		Weight (kg)
	m/Hr	L/min	L/S	mbar	Torr	Pa						L/min	gal/min	
BLZ50	180/216	3000/3600	50/60				7.5/7.5		65	40	0.85	2.50	0.67	295
BLZ70	250/300	4200/5000	70/84				7.5/7.5		80	40	0.85	2.60	0.70	350
BLZ110	400/480	6600/7920	110/132				11/15		100	65	1.40	2.80	0.75	480
BLZ150	540/650	9000/10800	150/180				18.5/18.5		150	65	2.00	3.00	0.80	520
BLZ200	720/850	2000/14400	200/240				22/22		150	65	2.00	4.00	1.07	680
BLZ70PM	250/300	4200/5000	70/84	0.02 / 0.01	0.015 / 0.0075	2	5.5/7.5	2900 / 3550	65	40	0.85	2.50	0.67	295
BLZ110PM	400/480	6600/7920	110/132				7.5/11		80	40	0.85	2.50	0.67	350
BLZ160PM	580/700	9600/11500	160/192				11/15		100	65	1.40	2.60	0.70	480
BLZ220PM	800/960	13200/15800	220/264				15/18.5		150	65	2.00	2.80	0.75	520
BLZ330PM	1200/1440	9800/23700	330/396				22/22		150	65	2.00	3.50	0.94	680
BLZ300PM	1080/1290	8000/21600	300/360	0.5/0.3	0.38/0.22	50/30	18.5/18.5		150	65	2.00	2.80	0.75	520

Notes:

- The oil quantities listed above are for reference only and are normally fluoride and mineral oils. The unit is shipped with pump oil and grease oil.
- The above cooling water quantity is based on the dosage of ambient temperature 30°C, cooling water inlet temperature 20°C, the use of circulating water will be different, water pressure 0.15-0.2MPa.
- BLZ screw vacuum pump is a series of screw vacuum pumps with equal lead; BLZ**PM screw vacuum pump is a series of screw vacuum pumps with variable lead.
- The inlet and exhaust diameters shown above are single-pump diameters, and the inlet and exhaust diameters of non-single-pump equipments are shown in the outline drawings of the equipments.
- The Company Has The Right To Change The Design For The Continuous Improvement Of The Products, and The Parameters Will Be Changed Without Prior Notice.

Coolers

Double cooling design, the oil temperature is maintained within a reasonable range, greatly improving the life of the rotor.

High precision filtration design

The inlet filter cartridge has a large unfolding area, the initial resistance is less than 15 mbar, and the default filtration level is GB/T14295-2003 "medium efficiency", EU4 of European EUROVENT standard.

The filter cartridges are classified as M10 or M10 by ASHRAE standards, and are quick and easy to replace with a clogged cartridge indicator.

Converter

Frequency conversion design, both energy saving and voltage stabilization, frequency conversion start reduces the impact on the power grid and machinery, prolonging the life of the machine.

Permanent Magnet Frequency Conversion Motor

All series are equipped with frequency conversion permanent magnet synchronous motors as standard, with power ranging from 7.5kw-110kw, asynchronous motors and explosion-proof motors as options, and heat dissipation capacity is adapted for frequency conversion working conditions.

Dual Silencing Design

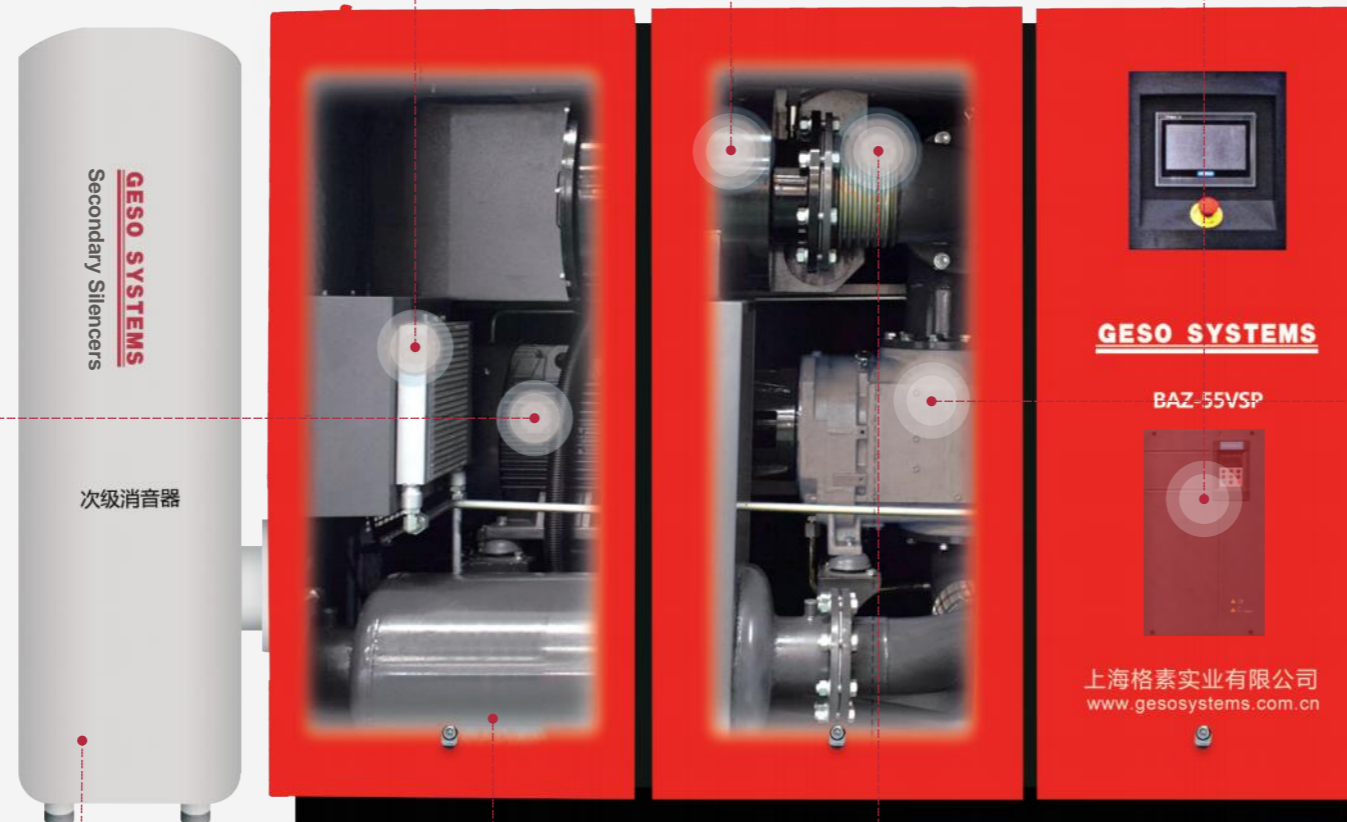
Dual exhaust noise reduction design with noise levels as low as 70 dB(A).

Screw Air End

Precision 3+5 teeth yin and yang rotors, meshing with each other and not touching the high-precision helical gears, speeding up the yang rotor internally, and the exterior of the screw rotor is treated with imported coatings for durability and longevity.

Elastic Design

Designed with stainless steel elastic joints to avoid vibration noise when opening and closing.



**Frequency Conversion
Oil-free Screw Vacuum Pumps**

**Frequency Conversion Oil-free Screw
Vacuum Pump VSPM Series**

High Efficiency And Energy Saving

More energy efficient than water ring pumps **40%**

- High flow rate, outstanding .
- Advantages stable and reliable, easy to install
- Frequency conversion fully automatic control, production without worry.
- Working vacuum range: 10KPA ~ -80KPA.



- **High productivity:** Reduced time required for process flow
- **Low maintenance costs:** no unanticipated sudden failures
- **High productivity:** long maintenance intervals
- **Low installation costs:** system integration reduces costs
- **Safe operation and stable output:** supports automatic control of the process flow
- **Significant cost savings:** low cost of water/gas and electricity usage
- **Space saving:** small footprint
- **Low carbon footprint:** no water, no oil and low power consumption
- **Environmental protection:** no waste oil emission

Technical Parameters

Model	Nominal pumping speed (m ³ /hr)	Ultimate Pressure mbar(a)	InletDiam (mm)	OutletDiam (mm)	Dimensions (mm)			Speed (50/60Hz) RPM
					L	W	H	
BAZ-11VPM	750	200	DN125	DN100	1400	1050	1140	11
BAZ-15VPM	900	200	DN125	DN100	1400	1050	1140	15
BAZ-22VPM	1200	200	DN125	DN100	1400	1050	1140	22
BAZ-22VSPM	1500	200	DN150	DN150	2200	1350	1600	22
BAZ-30VPM	1880	200	DN150	DN150	2200	1350	1600	30
BAZ-37VPM	1980	200	DN150	DN150	2200	1350	1600	37
BAZ-37VSPM	2550	200	DN200	DN150	2200	1350	1600	37
BAZ-45VPM	3050	200	DN200	DN150	2200	1350	1600	45
BAZ-55VPM	3500	200	DN200	DN150	2200	1350	1600	55
BAZ-55VSPM	4000	200	DN300	DN200	2660	1770	1950	55
BAZ-75VPM	5100	200	DN300	DN200	2660	1770	1950	75
BAZ-90VPM	6000	200	DN300	DN200	2660	1770	1950	90
BAZ-110VPM	7500	200	DN300	DN200	2660	1770	1950	110

If the above parameters are changed, no further notice will be given, the program parameters shall prevail, and customized special models are acceptable.

Notes:

VPM:for frequency conversion oil-free screw vacuum pump.

VSPM:for enhanced frequency conversion oil-free screw vacuum pump.

Oil Lubricated Screw Vacuum Pumps

BAZ-PM+ Series

New generation of intelligent oil-lubricated screw vacuum pumps

Incorporating domestic and foreign frequency conversion drive technology, adopting plug-and-play design principle, excellent performance, ruggedness, energy saving and environmental protection, more convenient installation, is one of the products of energy-saving transformation advocated by the state.

Permanent Magnet Frequency Conversion Integrated Screw Air End

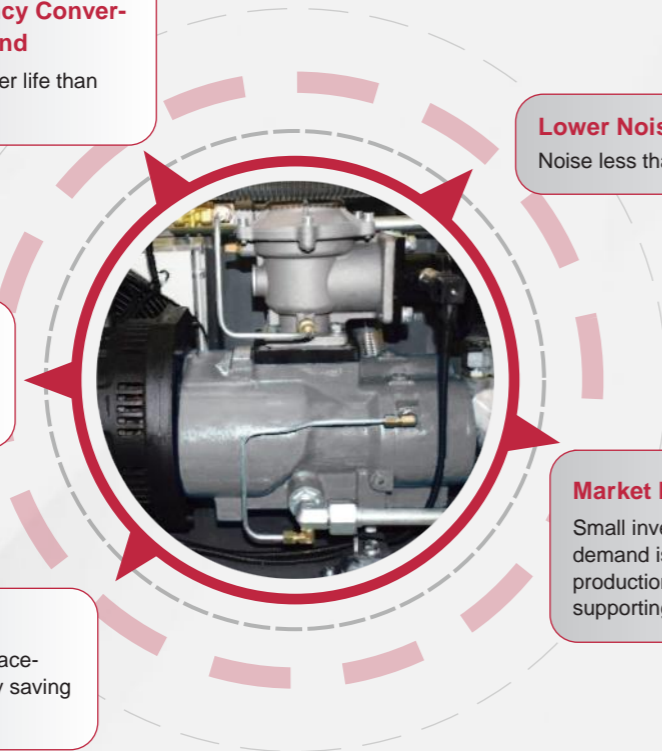
Durable and reliable, 6 times longer life than rotary vane pumps.

High-performance systems

Automatic adjustment of the system according to production needs.

High Pumping Speed

Flow rate: 160m³/h~380m³/h Replacement of rotary vane pumps energy saving more than 30%.



Lower Noise

Noise less than 65db(A) is on-site type.

Market Prospect

Small investment cost, high market demand is the first choice of production manufacturers supporting.

Product Features



- Hot and cold separation design to maximize the life of components.
- Superior oil retention.
- Simple disassembly and easy maintenance.
- The whole series of products do not need a pump to maintain oil pressure.
- Relative to competitors, the same power, high pumping speed, less fuel consumption, small floor space.
- Simple structure with finite element design.

Technical Parameters

Model	Nominal pumping speed (m ³ /hr)	Ultimate Pressure mbar(a)	Oil quantity (L)	Operating temperature (°C)	Inlet Diam (mm)	Outlet Diam (mm)	Dimensions (mm)			Power (kw)
							L	W	H	
BAZ-450PM+	450	0.35	12	0-46	DN80	DN50	1170	950	1060	5.5
BAZ-580PM+	580	0.35	12	0-46	DN80	DN50	1170	950	1060	7.5
BAZ-730PM+	730	0.35	16	0-46	DN80	DN50	1400	1050	1140	11
BAZ-900PM+	900	0.35	16	0-46	DN80	DN50	1400	1050	1140	15
BAZ-1300PM+	1300	0.35	40	0-46	DN150	DN100	1850	1600	1470	22
BAZ-1800PM+	1800	0.35	40	0-46	DN150	DN100	1850	1600	1470	30
BAZ-2200PM+	2200	0.35	40	0-46	DN150	DN100	1850	1600	1470	37
BAZ-3000PM+	3200	1.00	85	0-46	DN150	DN125	2250	1650	1689	45
BAZ-3800PM+	3800	1.00	85	0-46	DN150	DN125	2250	1650	1689	55
BAZ-4600PM+	4600	1.00	85	0-46	DN200	DN150	3000	2050	2000	75
BAZ-5400PM+	5400	1.00	90	0-46	DN200	DN150	3000	2050	2000	90
BAZ-6500PM+	6500	1.00	105	0-46	DN200	DN150	3000	2050	2000	110

Notes: If the above parameters are changed, no further notice will be given, the program parameters shall prevail, and customized special models are acceptable.

Slide Valve Vacuum Pumps

Slide Valve Vacuum Pumps

Single-stage H-type and double-stage 2H-type two kinds of structure type

Two-stage pumps have an order of magnitude lower ultimate pressure (and an order of magnitude higher vacuum) than single-stage pumps.

Suitable for pumping out general gases. When using gas ballast valve, can also pumping a small amount of condensable vapors (such as water vapor). When pumping gases with high oxygen content, explosive and corrosive to ferrous metals, and chemical reaction of vacuum oil, additional devices should be added. It can be used alone or as a pre-stage pump for oil diffusion pump, oil vapor injection pump, Roots vacuum pump and other high vacuum pumps.



Applications:



Product Features

Slewing parts are designed according to the dynamic balancing point of view of the counterweight, the pump vibration is small, stable operation.

As the pump moving parts to take a small eccentric distance, the rotational inertia is small, the selected motor power is also small.

For example: BH150G with the same pumping speed of 150L/s can be used in the coating industry.7.5kW motor,whereas the BH150 pump requires a 15kW motor.

Optimized design of core components with high degree of generalization

Examples include parts such as slide valves, eccentric wheels, guides and pump covers for pumps BH70G, B2H70G, BH150G, B2H120G, etc.



Can be equipped with an oil mist eliminator to create a clean environment

The oil-air separator is made of aluminum alloy (except BH150), which has beautiful appearance and is easy to install and disassemble.

GAP type pumps are bearing displacement, and add the oil supply pump, forced lubrication, suitable for long time high pressure working conditions.

GA type pump is bearing outwardly moved, separated from the pump cavity, separate oil supply, avoid impurities and harmful gases to enter.Extend service life.

Pump body and pump cover, oil tank and oil tank cover, the bonding surface has O-ring sealing groove, reliable sealing, easy to install and disassemble.

Technical Parameters

Model	Ultimate Pressure		Pumping Speed (L/s)	Inlet Diam (mm)	Outlet Diam (mm)	Motor Power(kW)	Cooling Water Consumption (kg/h)	Speed (50/60Hz) RPM
	Pa	Torr						
B2H-15G	6×10^{-2}	4.5×10^{-4}	15	50	40	2.2	Air Cooling	175
B2H-30G	6×10^{-2}	4.5×10^{-4}	30	63	50	4.0	100	380
B2H-50G	6×10^{-2}	4.5×10^{-4}	50	76	56	5.5	100	375
B2H-70GA(P)	6×10^{-2}	4.5×10^{-4}	70	80	50	7.5	150	710
B2H-120GB	6×10^{-2}	4.5×10^{-4}	120	100	80	11.0	200	738
B2H-160GA	6×10^{-2}	4.5×10^{-4}	160	100	80	15.0	200	922
BH-70G(B)	1	7.5×10^{-3}	70	80	50	5.5	150	525
BH-150	1	7.5×10^{-3}	150	100	80	15.0	200	830
BH-150G	1	7.5×10^{-3}	150	100	80	7.5	200	970

If the above parameters are changed, no further notice will be given, the program parameters shall prevail, and customized special models are acceptable.

Notes:

1. G denotes basic type, GA denotes bearing outward, GAP denotes bearing outward with oil pump for forced oil supply, GB denotes small cylinder slide stick converted to guide rail assembly.
2. Ultimate pressures in the table are the values measured with a compression gauge (McKenzie).

New Generation Of Slide Valve Vacuum Pumps

New Generation Of Slide Valve Vacuum Pumps

British technology slide valve pump, the series of pumps for the single-stage single-cylinder vertical structure, the pump low center of gravity, small power, beautiful appearance, good stability, small footprint, smooth and reliable operation.

Its structure is quite different from that of domestic pumps, the oil tank is at the back of the pump, the oil layer on the exhaust valve is very thin, which reduces the amount of oil sprayed during large exhaust, and the cyclone oil-air separator is added at the side to further reduce the amount of oil sprayed when the pump is in large exhaust; in the working environment with high water content, the process of exhausting the oil has less contact with the vacuum oil, and the oil has a long time of antiemulsification, which improves the service life of the vacuum oil.



- 1 The oil tank of the slide valve pump is placed at the back of the pump cavity to prevent the vacuum oil from returning to the pump cavity and causing starting difficulties, and there is a cleaning port on the side of the oil tank for easy cleaning of the oil tank.
- 2 A, B pump cover interchangeable, and the pump body between the "O" ring sealing, sealing performance is reliable, easy to disassemble and maintenance.
- 3 Increase the seal between the pump chamber and bearing to improve the service life of the bearing, and the vacuum oil of the slide valve pump is supplied separately from the bearing lubricant.
- 4 Add shaft sleeve between shaft and seal to solve the later maintenance cost and improve the service life of the pump.
- 5 The pump runs smoothly, basically without vibration, and the ultimate vacuum is higher than the domestic standard, and the single-stage pump reaches the vacuum degree of the double-stage pump.
- 6 The air inlet is equipped with a strainer device to prevent foreign objects from entering the pump chamber.

Technical Parameters

Model	Ultimate Pressure		Pumping Speed (L/s)	Inlet Diam (mm)	Outlet Diam (mm)	Motor Power (kW)	Cooling Water Consumption (kg/h)	Speed (50/60Hz) RPM
	(Pa)	(Torr)						
BH-30GK	0.6	4.5×10^{-3}	30	50	73	3.00	Air Cooling	250
BH-50GK	0.6	4.5×10^{-3}	50	80	73	4.00	100	335
BH-80GK	0.6	4.5×10^{-4}	80	80	80	7.50	150	580
BH-150GK	0.6	4.5×10^{-3}	150	100	100	11.0	200	825
BH-180GA	1.0	7.5×10^{-3}	180	160	100	15.0	450	1155
BH-200GA	1.0	7.5×10^{-3}	200	160	100	15.0	450	1155
BH-230GA	1.0	7.5×10^{-3}	230	160	100	18.5	450	1175
BH-300GA	1.0	7.5×10^{-3}	300	160	100	22.0	700	1525
BH-150GF	1.0	7.5×10^{-3}	150	100	100	11.0	200	905
BH-200GF	1.0	7.5×10^{-3}	200	160	100	15.0	450	1255
BH-300GF	1.0	7.5×10^{-3}	300	160	100	22.0	700	1650

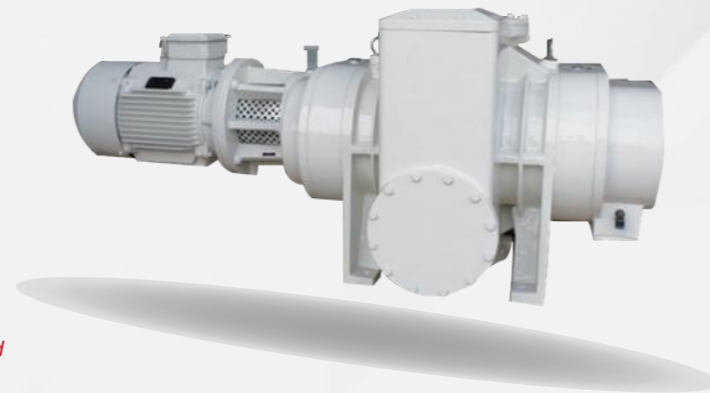


Roots Vacuum Pumps

Product Overview

Roots vacuum pump is equipped with a pair of synchronized reverse high-speed rotation of the 8-type rotor in the pump cavity, the work of the two rotors in the pump cavity to produce suction and exhaust role. This type of pump can not exhaust alone, must be used in series with the previous pump (such as slide valve pump, water ring pump, oil ring pump, etc.).

This type of pump is divided into two types: ordinary BZJ type and BZJP type with relief valve. It is widely used in *vacuum coating, chemical industry, foodstuff, medicine, smelting, motor manufacturing* and other industries. Especially when it adopts double-stage water ring pump in the front stage, it can pump out the gas containing a large amount of water vapor, so it is very suitable for the production process of *distillation evaporation and freeze-drying*.



Product Features

- 1

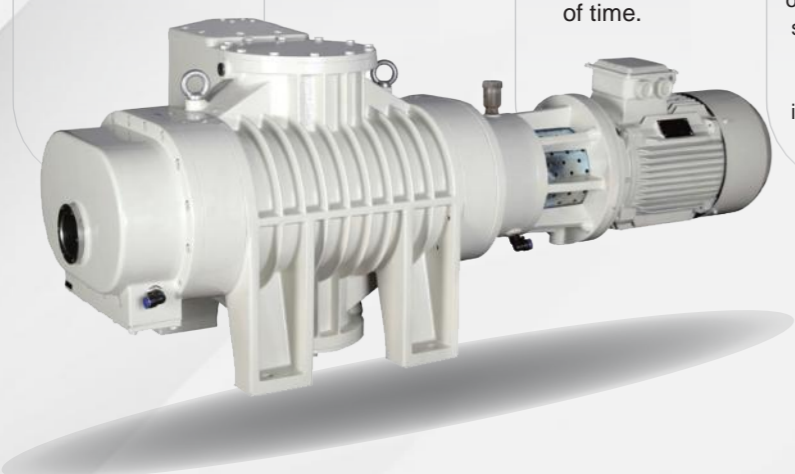
Smooth running, low vibration and low noise.
- 2

Low power consumption and good energy saving.
- 3

Fast start-up and ability to reach ultimate vacuum in a short period of time.
- 4

No oil lubrication is required in the pump chamber, eliminating the contamination of the vacuum system by oil vapors and making it insensitive to fine dust.
- 5

ZJP pumps are equipped with relief valves and have an automatic overload prevention function.



BZJP-1200C
Roots vacuum pumps

Technical Parameters

Model	Ultimate Pressure		Pumping Speed (L/s)	Inlet Diam (mm)	Outlet Diam (mm)	Max.permissible Diff.pressure		Speed(50/60Hz) RPM		Motor Power (kW)	Weight (kg)
	(Pa)	(Torr)				(Pa)	(Torr)	(Pa)	(Torr)		
BZJP-70	5×10 ⁻²	3.7×10 ⁻⁴	70	80	80	/	/	8000	60	1.10	110
BZJP-150A	5×10 ⁻²	3.7×10 ⁻⁴	150	100	100	/	/	4000	30	2.20	190
BZJP-300A	5×10 ⁻²	3.7×10 ⁻⁴	300	150	150	/	/	4000	30	4.00	265
BZJP-600A	5×10 ⁻²	3.7×10 ⁻⁴	600	200	200	/	/	2700	20	7.50	570
BZJP-1200C	5×10 ⁻²	3.7×10 ⁻⁴	1200	250	200	/	/	2700	20	11.0	770
BZJP-2500A	5×10 ⁻²	3.7×10 ⁻⁴	2500	320	320	/	/	2700	20	18.5	1350
BZJ-150A	5×10 ⁻²	3.7×10 ⁻⁴	150	100	100	6700	50	/	/	2.20	180
BZJ-300A	5×10 ⁻²	3.7×10 ⁻⁴	300	150	150	5300	40	/	/	4.00	250
BZJ-600A	5×10 ⁻²	3.7×10 ⁻⁴	600	200	200	5300	40	/	/	7.50	550
BZJ-1200C	5×10 ⁻²	3.7×10 ⁻⁴	1200	250	200	4000	30	/	/	11.0	730

Inline Atmospheric Roots Vacuum Pumps

Also known as air-cooled Roots vacuum pumps, they operate at high differential pressures and high compression ratios and have the advantage of oil-free compression.



Technical Parameters

Model	Ultimate Pressure		Pumping Speed (L/s)	Rotation Speed (RPM)	Inlet Outlet Diam (mm)	The Cooling Gas Inlet Diam (mm)	Max.Compression At Zero Throughpu	Speed (50/60Hz) RPM
	Pre-stage pump	Direct discharge						
BLQ-450	5×10^{-2}	2.0×10^4	450	990	200	2 \times ϕ 100	30	5.5 ~ 45
BLQ-600	5×10^{-2}	1.3×10^4	600	1490	200	2 \times ϕ 100	40	7.5 ~ 60
BLQ-900	5×10^{-2}	2.0×10^4	900	990	250	2 \times ϕ 160	32	11 ~ 90
BLQ-1200	5×10^{-2}	1.3×10^4	1200	1490	250	2 \times ϕ 160	43	11 ~ 132
BLQ-2500	5×10^{-2}	2.0×10^4	2500	990	400	2 \times ϕ 160	35	18.5 ~ 250
BLQ-3750	5×10^{-2}	1.3×10^4	3750	1490	400	2 \times ϕ 160	45	30 ~ 250

Rotary Vane Vacuum Pumps

Suitable for pumping air and other general gases.

- When a gas ballast valve is used, it is also possible to pump gases containing small amounts of condensable vapors (e.g., water vapor).
- When pumping gases containing too much oxygen, explosive, corrosive to ferrous metals, or chemically reactive to vacuum oil, additional devices should be added.
- This type pump can be used alone or as a pre-stage pump for high vacuum pumps such as oil diffusion pump and Roots vacuum pump.
- This type of pump is widely used in vacuum coating, vacuum heat treatment, electronics, semiconductor, lighting, food packaging, refrigeration and other industries.



- Low vibration and low noise.
- Built-in automatic anti-return oil check valve.
- Built-in pressure oil circulation system.
- Simple structure, easy to use and easy to maintain.

Technical Parameters

Model	Ultimate Pressure(Pa)		Pumping Speed (L/s)	Inlet Diam (mm)	Outlet Diam (mm)	Motor Power (kW)	Weight (kg)
	Partial pressure	Full pressure					
B2XZ-2	6×10^{-2}	2	2	25	25	0.37	23
B2XZ-4	6×10^{-2}	2	4	25	25	0.55	30
B2XZ-8	6×10^{-2}	2	8	40	40	1.10	70
B2XZ-15	6×10^{-2}	2	15	40	40	1.50	80
B2X-30	6×10^{-2}	2	30	65	65	3.00	250
B2X-70	6×10^{-2}	2	70	80	80	5.50	338