



嘉兴市群邦五金有限公司

JIAXING CITY QUNBANG HARDWARE CO., LTD



企业文化：自由，活泼，竞争，开放  
Company culture: unrestrained, vivid, com  
peted, opened

服务理念：手握手的承诺，心贴心的服务！  
Service concept: hand-in-hand commit  
ment, heart-to-heart service.

## COMPANY PROFILE

Jiaying City Qunbang Hardware Co., Ltd. is a production\design\sales and after-sales as one of the fasteners business. The company is located in Hangjiahu Plain, close to Shanghai\Ningbo\Zhapu ports. The geographical position is superior, the transportation is convenient, has created the natural superiority for the export.

QBH mainly produces and provides the most important fasteners and high strength fasteners. We have products are cheese head studs for arc stud welding\High strength heavy hex bolts\High strength torsion shear type bolt. The production standard is mainly GB\ISO\ANSI\DIN\JIS and other standard product. From the establishment of the company to the present, after more than ten years of development, it has more than 6000 square meters of modern factory buildings, the average monthly output of about one thousand tons.

In 2017, we registered the trademark "QBH" in the CHINA\EU\United States, and has six fastener product patents, has obtained the Zhejiang Province science and technology small and medium-sized enterprise certificate as well as the ISO9001:2000 certificate. With the continuous development and expansion of the company, as well as customer demand for product diversification, on the basis of its original production, in order to further enhance the potential for cooperation with customers, as well as to provide competitive prices. Starting in 2015, QBH has taken part in several fastener enterprises one after another, the product variety is more abundant and the price is more advantageous, and the quality can also be well controlled. QBH has always been to provide customers with efficient and convenient service and quality products, and create a pleasant trading process for customers for the mission, deeply participate in customer construction projects and make progress together with customers, this means that we need to provide better and more cost-effective solutions, so as to help customers stand out from the competition.

QBH promises to always provide you with excellent quality, efficient service and very competitive prices. We believe that the cooperation between us is not only based on business, but also hope that we can open new markets on the basis of win-win situation. And thank all the customers in the past to give us great support and help, make us grow up gradually, at the same time also hope that in the future, and you can establish new business relations.

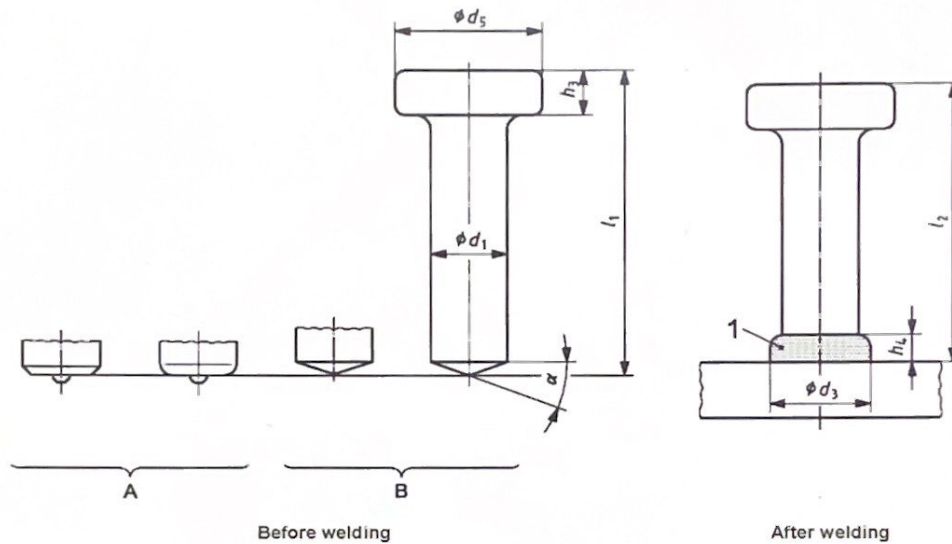


# FACTORY ENVIRONMENT





9.6 Shear connector (SD)



Key

- 1 weld collar
- A shape A of tip (example)
- B shape B of tip (example)

Figure 5 — Shear connector (SD)

Table 10 — Dimensions of shear connectors (SD) with  $l_2$  according to Table A.4

Dimensions in millimetres

$d_1 - 0,4^a$	9,5	10	12,7	13	16	19	22	25	25,4
$d_5 \pm 0,3$	19		25		32 <sup>d</sup>	32	35		41
$d_3^c$	13		17		21	23	29		31
$h_3 \begin{smallmatrix} +1 \\ -0,5 \end{smallmatrix}$	7		8		8	10	10		12
$h_4^c$	2,5		3		4,5	6	6		7
$\alpha \pm 2,5^\circ$	22,5°		22,5°		22,5°	22,5°	22,5°		22,5°
$l_1 \pm 1,5$	$l_2^{b,c} + 3$		$l_2^{b,c} + 3$		$l_2^{b,c} + 4$	$l_2^{b,c} + 4,5$	$l_2^{b,c} + 5$		$l_2^{b,c} + 5,5$

<sup>a</sup> Excess diameter or production impressions in the shaft area below the head are permitted up to 0,5 mm, provided they do not affect proper plunge.

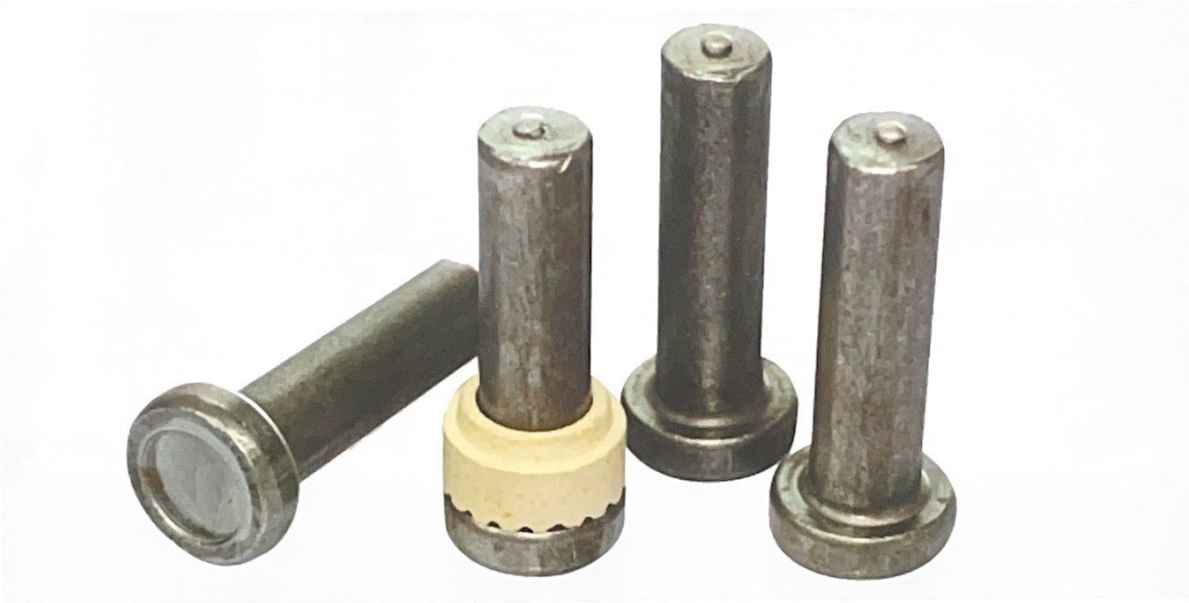
<sup>b</sup> Tolerance on  $l_2$  is  $\pm 1,2$  mm.

<sup>c</sup> For special conditions, e.g. through-deck stud welding, the dimensions and the tolerances are not applicable.

<sup>d</sup> May be reduced to 29 mm for shear application.

<sup>e</sup> Use of the optional dimension depends on national regulations.

ISO13918 STANDARD



ANSI/AW Sd 1.1 STANDARD

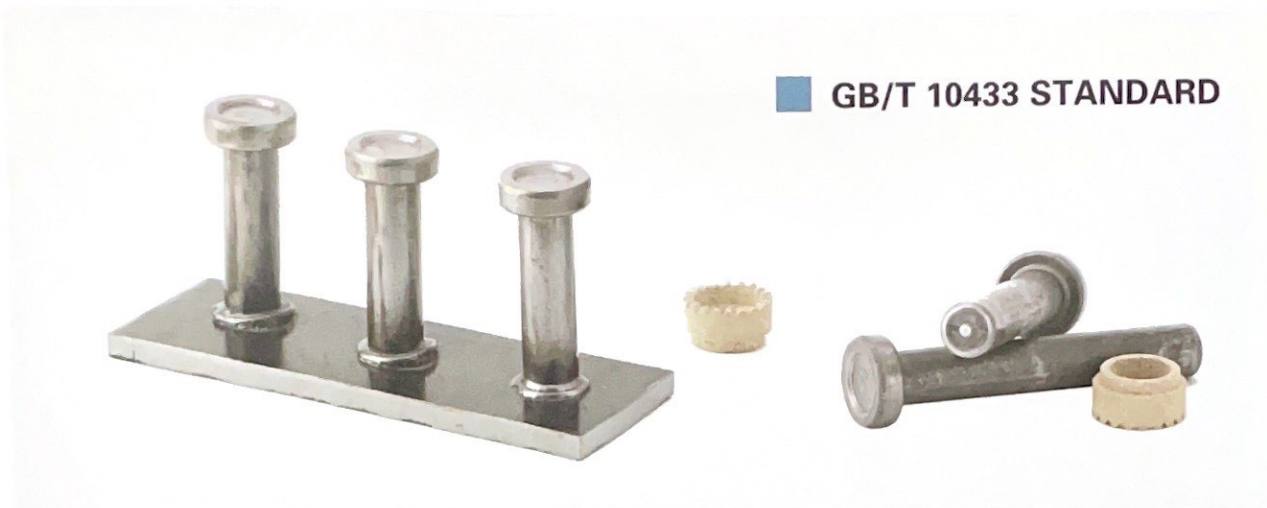


QBH PROUDCTS

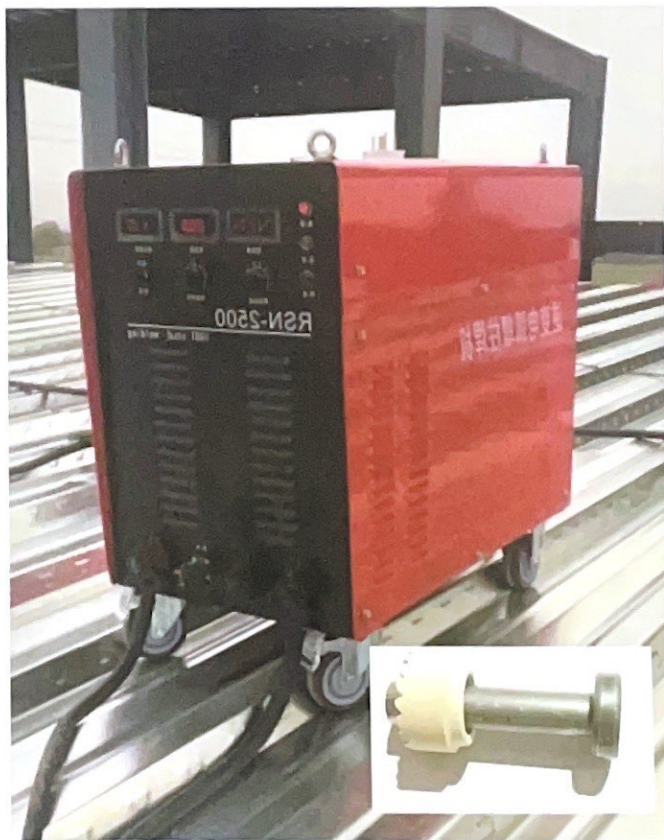
d <sup>1)</sup>	SIZE	10	13	16	19	22	25
	min	9.64	12.57	15.57	18.45	21.48	24.48
	max	10	13	16	19	22	25
d <sub>k</sub>	max	18.35	22.42	29.42	32.5	35.5	40.5
	min	17.65	21.58	28.58	31.5	34.5	39.5
d <sub>1</sub> <sup>2)</sup>		13	17	21	23	29	31
h <sup>2)</sup>		2.5	3	4.5	6	6	7
k	max	7.45	8.54	8.45	10.45	10.45	12.55
	min	6.55	7.55	7.55	9.55	9.55	11.45
r	min	2	2	2	2	3	3
WA <sup>3)</sup>		4	5	5	6	6	6
l <sub>1</sub> <sup>4)</sup>		KG/MPCS					
40		37	62				
50		43	73	116			
60		49	83	131	188		
80		61	104	163	232	302	404
100		74	125	195	277	362	481
120		86	146	226	321	422	558
150		105	177	274	388	511	673
180		123	208	321	455	601	789
200			229	352	499	660	866
220				384	544	720	943
250				431	611	810	1059
300					722	959	1251

MATERIAL	STANDARD	MECHANICAL
ML15、ML15AL	GB/T 6478	$\sigma_b \geq 400\text{N/mm}^2$ $\sigma_s$ 或 $\sigma_{p0.2}$ 大于等于 320N/mm平方 $\delta_s \geq 14\%$

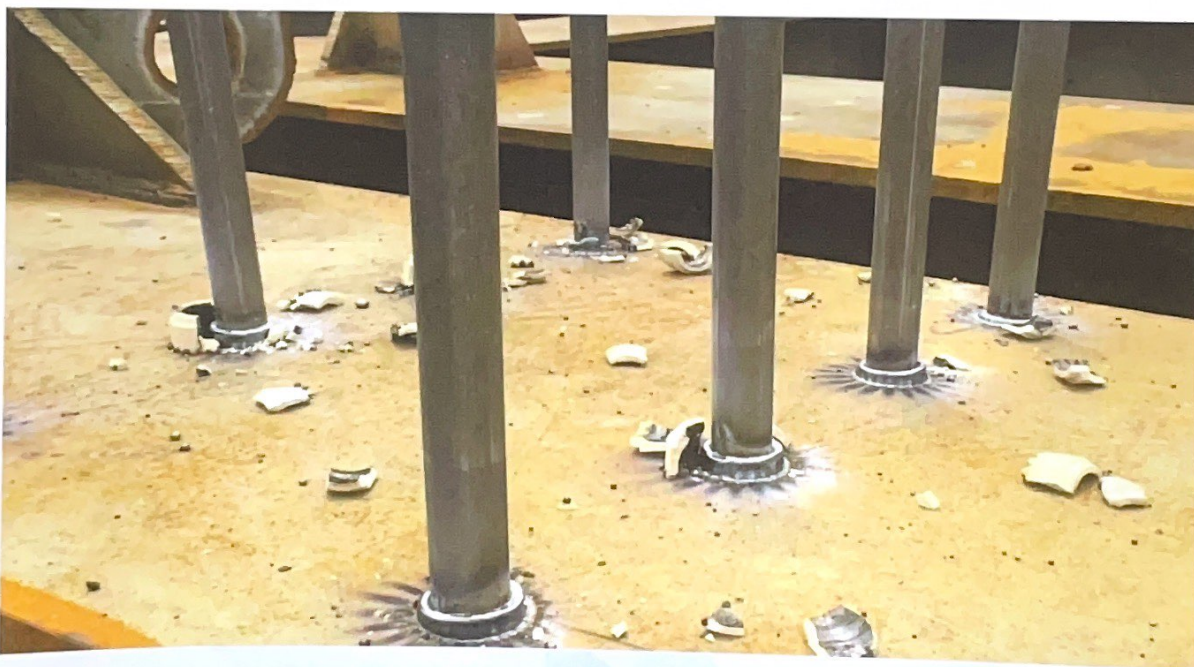
d/mm	10	13	16	19	22	25
Tensile load/N	32970	55860	84120	119280	159600	206220



JIS B1198 STANDARD



PRODUCT APPLICATIONS AND ENGINEERING CASES

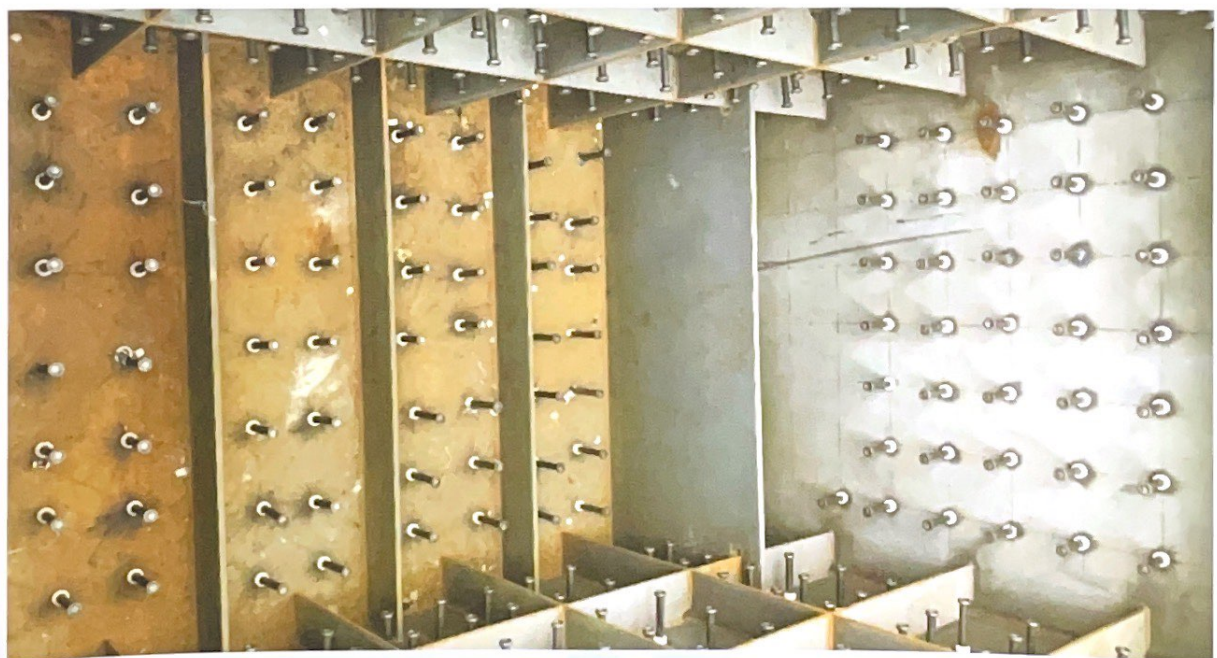




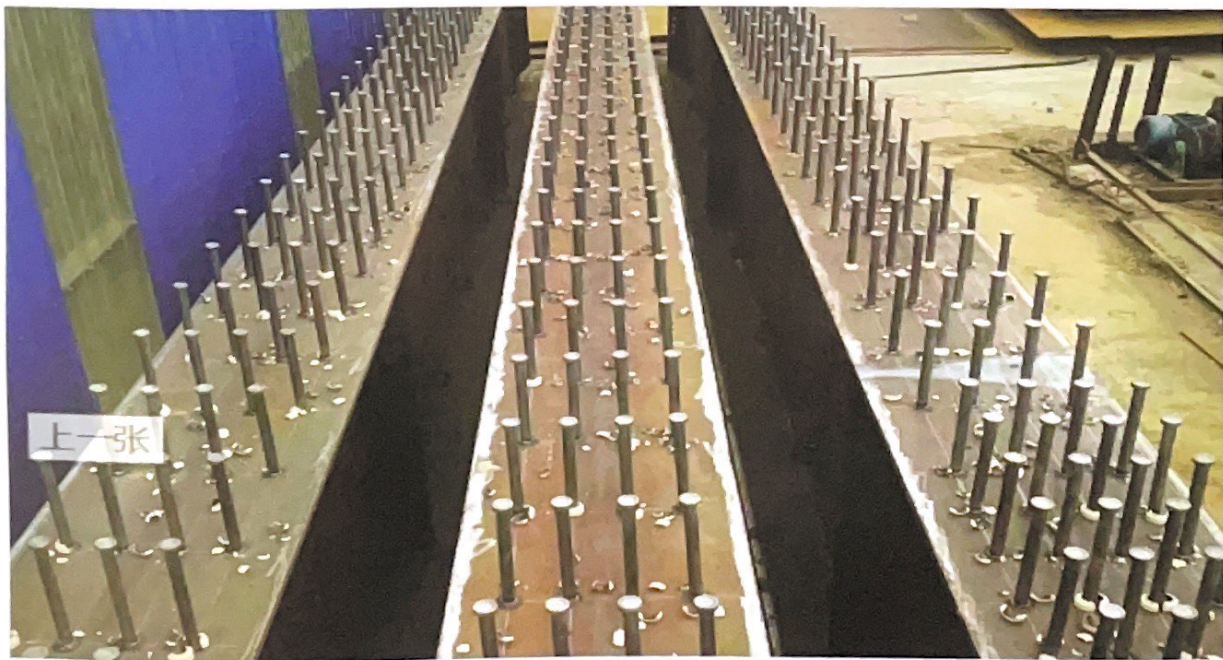
PRODUCT APPLICATIONS AND ENGINEERING CASES



PRODUCT APPLICATIONS AND ENGINEERING CASES



PRODUCT APPLICATIONS AND ENGINEERING CASES





**JIAXING CITY QUNBANG HARDWARE CO.,LTD**  
**ADD:NO.375,TONGLE ROAD,NANHU DISTRICT,JIAXING CITY,**  
**ZHEJIANG PROVINCE**

**Wechat:0086-13511332403**

**Skype:zjliulei**

**Mobile:0086-13511332403**

**TEL:0086-573-82071082**

**FAX:0086-573-82071081**

**E-mail:sales@qbfastener.cn      liulei94453078@163.com**

**www.qbfastener.cn**

**www.steelnutbolts.com**