



**AUTOMATIC
DOOR** **ACCESSORIES**
Automatic Sliding Door
Automatic Swing Door
Automatic Door Accessory



Ningbo VEZE Automatic Door Co., Ltd. was established in September 2009 and is a professional enterprise specialized in researching, designing, manufacturing and selling various automatic door systems, automatic sliding doors, automatic swing doors, hospital hermetic doors, automatic curved doors, automatic telescopic doors.

CONTENTS



VEZE takes Quality, Efficiency and Service as our motto. A profound understanding of customer experience stimulated us to supply overall solutions to meet customers' satisfaction of security, reliability and durability. Our products have certificates of CE, UL, TUV to meet strict requirements of different countries. Our VZ-155 automated pedestrian door operator is the first one to get UL approved in our domestic automatic door industry.

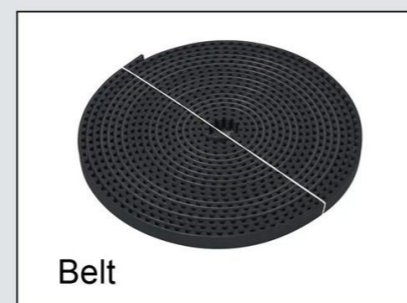
VZ-125A	02
VZ-150	03
VZ-155	04
VZ-195	05
VZ-200	06
VZ-300	07
SW100/SW200	08
AUTOMATIC DOOR ACCESSORY	09

Productive strength



Automatic Sliding Door Operator

VZ-125A

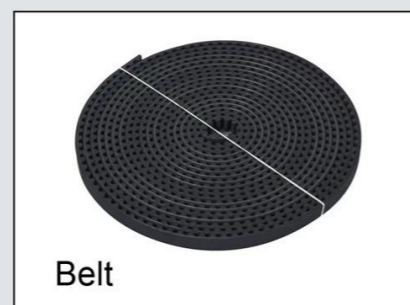
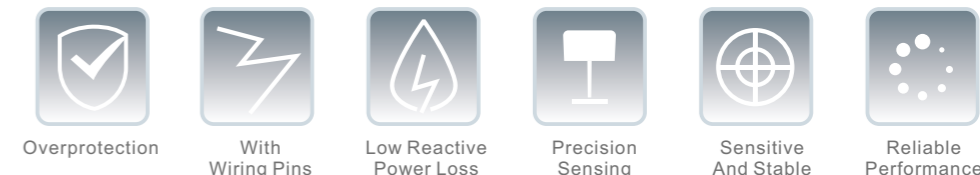


VZ-125A AUTOMATIC DOOR

Model	125 series	
Door leaf	Single leaf	Double leaves
Weight of door leaf	Max. 150 kg	Max. 2x120kg
Width of door leaf	DW=750-1600mm	DW=650-1250mm
Width of door opening	W=1450-3100 mm	W=2500-5000 mm
Method of Installation	Surface Installation	
Supply power voltage	AC 110-220V±10%, 50/60 Hz	
Opening Speed	150-460mm/s (adjustable)	
Closing Speed	130-460mm/s (adjustable)	
Door hold-open time	0-8s (adjustable)	
Manual open/close force	< 40 N	< 50 N
Motor	DC 24 V, 60~70W(DC, brushless)	
Working Environment temperature	-20°C~50°C	

Automatic Sliding Door Operator

VZ-150

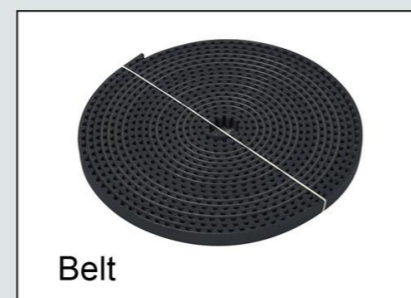
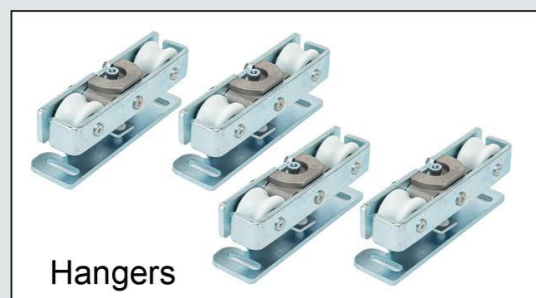
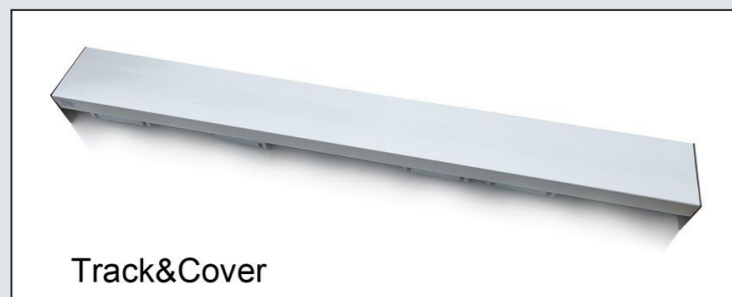
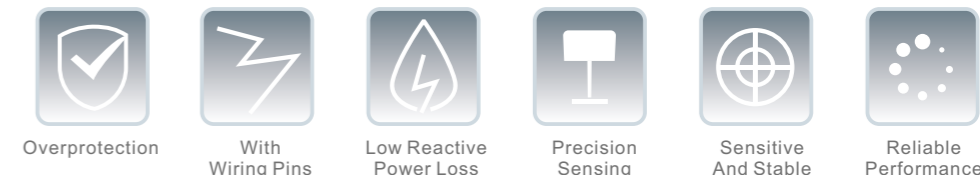


VZ-150 AUTOMATIC DOOR

Model	150 series	
Door leaf	Single leaf	Double leaves
Weight of door leaf	Max. 150 kg	Max. 2X 140kg
Width of door leaf	DW=750-1600mm	DW=650-1250mm
Width of door opening	W=1450-3100 mm	W=2500-5000 mm
Method of Installation	Surface Installation	
Supply power voltage	AC 110-220V±10%, 50/60 Hz	
Opening Speed	150-500 mm/s (adjustable)	
Closing Speed	130-500 mm/s (adjustable)	
Door hold-open time	0-8s (adjustable)	
Manual open/close force	< 40 N	< 50 N
Motor	DC 24 V, 75W (DC, brushless)	
Working Environment temperature	-20°C~50°C	

Automatic Sliding Door Operator

VZ-155

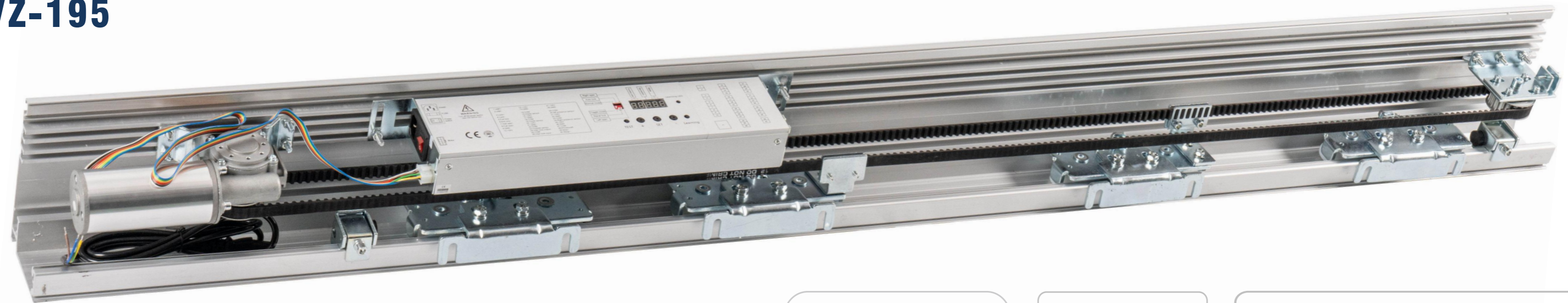


VZ-155 AUTOMATIC DOOR

Specifications	VZ-155	
Door leaf mode	Single-opening	Double-opening
Door leaf weight	Max 150kg	Max 2*140kg
Door leaf width	DW=700-1300mm	DW=600-1250mm
Voltage	AC 220V, 50Hz	
Opening speed	15-45cm/s (Adjustable)	
Closing speed	10-43cm/s (Adjustable)	
Opening time	0-9second (Adjustable)	
Manual open force	<40N	<50N
Motor	24V,55W brushless DC motor	
Operating temperature	-20℃ ~ +70℃	

Automatic Sliding Door Operator

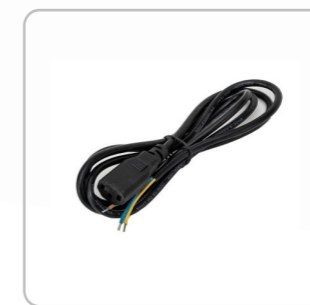
VZ-195



Door sliding models	Single-opening	Double-opening
Door leaf weight	≤ 1*195 kg	≤ 2*180 kg
Door leaf width	700-1500 mm	500-1450 mm
Opening speed	150-550 mm/s (Adjustable)	
Closing speed	150-550 mm/s (Adjustable)	
Voltage	AC 90-250V 50-60 Hz	
Opening time	0-60 second (Adjustable)	
Manual open force	< 40N	< 50N
Impact function	Rebounding up on impact	
Motor	DC 24V 100W 2300RPM	
Operating temperature	-20°C - +70°C	



Motor



Power switch



Controller



Infrared sensor



Hangers



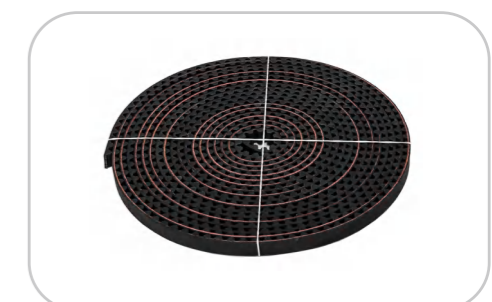
Belt connector



Pulley



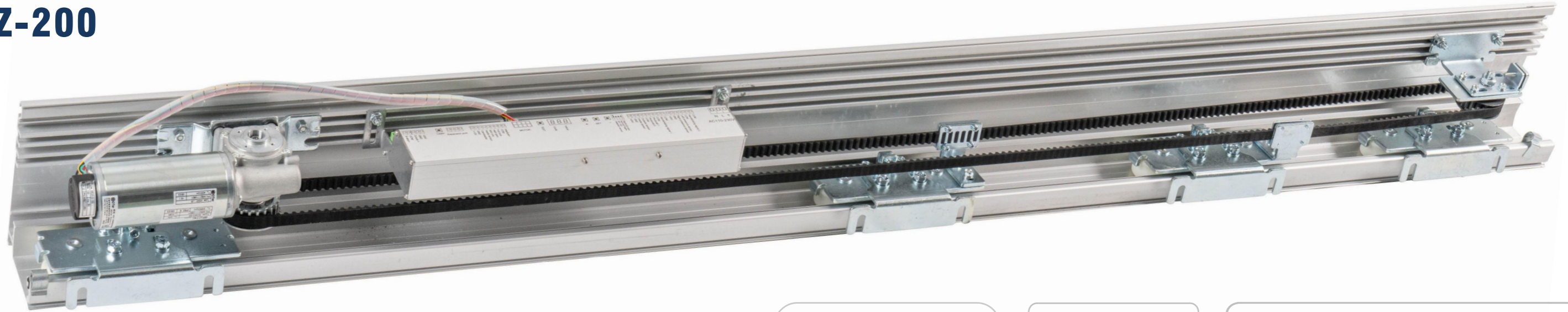
Stoper



Belt

Automatic Sliding Door Operator

VZ-200



Door sliding models	Single-opening	Double-opening
Door leaf weight	≤ 1*300 kg	≤ 2*250 kg
Door leaf width	700-1500 mm	500-1450 mm
Opening speed	150-700 mm/s (Adjustable)	
Closing speed	150-600 mm/s (Adjustable)	
Voltage	AC 90-250V 50-60 Hz	
Opening time	0-9 second (Adjustable)	
Manual open force	< 40N	< 50N
Impact function	Rebounding up on impact	
Motor	DC 24V Brush 100W 2800RPM	
Operating temperature	-20°C - +60°C	



Motor



Key switch



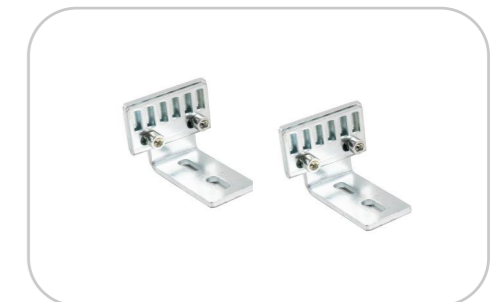
Controller



Infrared sensor



Hangers



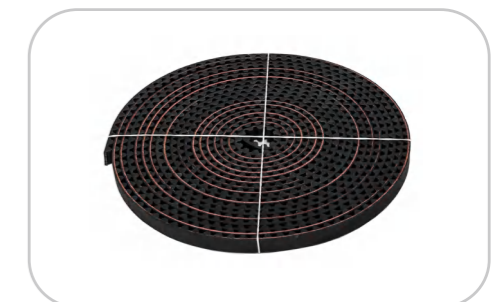
Belt connector



Pulley



Stoper



Belt

Automatic Sliding Door Operator

VZ-300



Door sliding models	Single-opening	Double-opening
Door leaf weight	≤ 1*300 kg	≤ 2*200 kg
Door leaf width	700-1500 mm	500-1450 mm
Opening speed	150-700 mm/s (Adjustable)	
Closing speed	150-600 mm/s (Adjustable)	
Voltage	AC 90-250V 50-60 Hz	
Opening time	0-60 second (Adjustable)	
Manual open force	< 40N	< 50N
Impact function	Rebounding up on impact	
Motor	DC 24V Brush 100W 2800RPM	
Operating temperature	-20°C - +60°C	



Motor and Controller



Function keypad



Sensor



Hangers



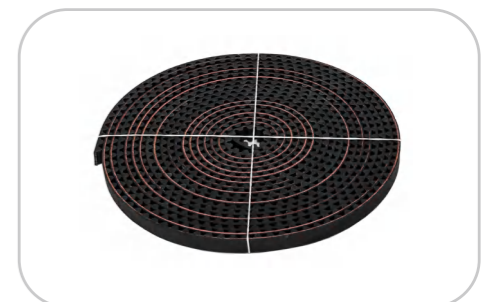
Belt connector



Pulley



Stopper



Belt

Automatic Swing Door Opener

SW100



Technical specifications: (SW100)

Door leaf weight	Max 100 kg
Door leaf width	Min.660 mm / Max.1200 mm
Open angle	90 degree Max. 120 degree
Opening time	0-30 second (Adjustable)
Voltage	AC 90-250V 50-60 Hz
Product weight	6.5 kg
Manual open force	< 40N
Protection class	IP 12D
Motor	DC 24V 50W
Operating temperature	-20°C - +50°C

SW200



Technical specifications: (SW200)

Door leaf weight	Max 200 kg
Door leaf width	Min.660 mm / Max.1200 mm
Open angle	90 degree Max. 120 degree
Opening time	0-30 second (Adjustable)
Voltage	AC 90-250V 50-60 Hz
Product weight	6.8 kg
Manual open force	< 40N
Protection class	IP 12D
Motor	DC 24V 70W
Operating temperature	-20°C - +55°C

- 
Overprotection
- 
With Wiring Pins
- 
Low Reactive Power Loss
- 
Precision Sensing
- 
Sensitive And Stable
- 
Reliable Performance

Accessory List

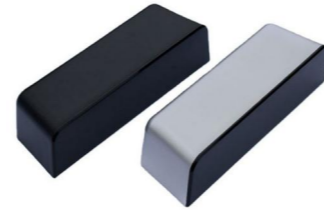


MS04 Microwave Sensor(24GHZ)



Power: AC/DC 12~36V
 Radio frequency: 24.125GHZ
 Protection level: IP52
 Size: 121x80x51mm(LxWxH)
 Max installation height: 3M

MS204 Microwave Sensor(24GHZ)



Power: DC 12~36V±10%
 Radio frequency: 24.125GHZ
 Protection level: IP52
 Size: 150x50x38mm(LxWxH)
 Max installation height: 4M

IS01 Infrared sensor



Power: DC 12~36V
 Sensing distance: 0.2m-2m
 Protection level: IP52
 Size: 221x74x35mm(LxWxH)
 Max installation height: 3M

IS03 Infrared Motion & Presence Safety Sensor



Power Input: DC 12-24V(±10%)
 Frequency: 24.125GHZ
 Protection level: IP54
 Size: 229x67x41mm(LxWxH)
 Max installation height: 3M

PB06 Wireless push button switch



Power: AC/DC 12~36V
 Hold open time : 1-9S adjustable
 Panel : 203x41x12.5mm
 Receiver : 123x50x32mm

PB05 Infrared touchless hand sensor switch



Power: AC/DC 12~36V
 Working type: infrared induction
 Transmit distance: 1-15cm
 Size: 113x63x20mm(LxWxH)
 Weight: 110g

PT01 Safety beam(photocell)



Power: AC/DC 12~30V
 Max transmission distance: 10m
 Type: single beam(one pair eyes)
 double beam(2 pairs eyes)
 Size : 105.5*53.4*28.5mm

UPS Automatic door backup lithium battery



Input voltage : 220VAC, 50HZ
 Output voltage: DC 24V/2.6A
 When power off, it can make the door work 7 hours or open and close 500 times.

LC02 Electric lock



Power: DC 12V
 Working current: 110mA
 Installation hole: 212(L)*35(W)
 Deep into wall around 43mm
 Size: 205x34x42mm(LxWxH)

FC04 Learning code remote control device



Power: DC 18~36V
 Transmission distance: 25M
 Function status: full open, lock, half open, automatic

KP01 Function key switch(five-range)



Power: DC 18~36V
 Functions: full open, half open, exit only, lock, automatic
 Size: 86x86x10mm(LxWxH)

V01 Wireless Handicap access switch



Power : AC/DC 12-30V
 Battery life time: 20000 times,
 AA battery*2pcs
 Size: 129x129x46mm(LxWxH)

VEZE

Ningbo VEZE Automatic Door Co., Ltd

Address: Wanyang Industrial Park, Hemudu Town, Yuyao,
Ningbo,China Tel: +86 15967846353

Email: info@vezedoors.com info@veze-autodoor.com

Website: www.vezedoor.com



WhatsApp



WeChat