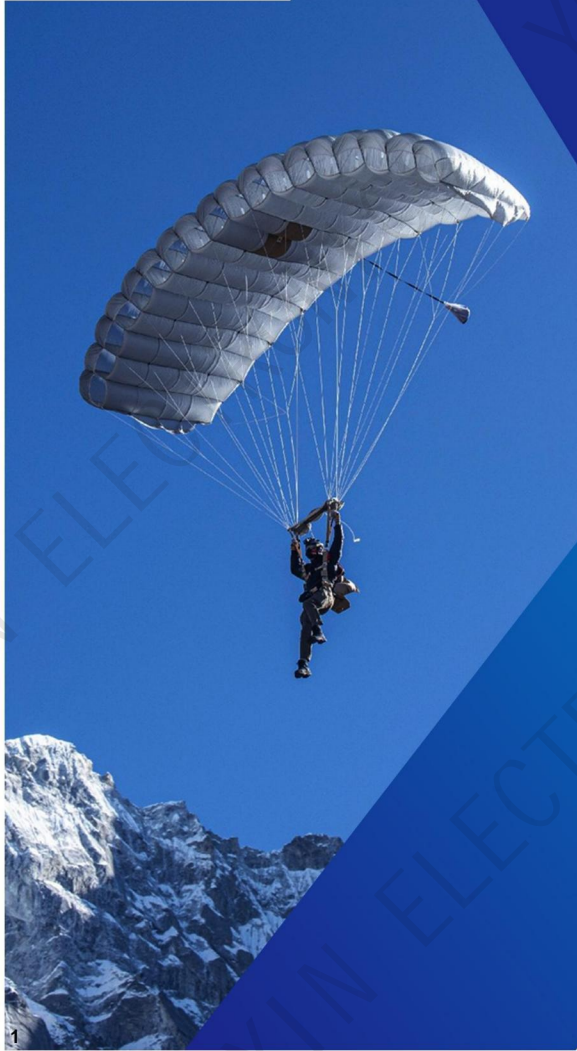


YOUXIN ELECTRONICS



特种装备

Company Manual
公司手册



Enterprise Qualification Certificate 企业资质证书



Certificate of Quality Management System Certification
ISO9001质量管理体系认证证书



Certificate of Environment Management System Certification
环境管理体系认证证书



Quality Management System Certificate
质量管理体系认证证书



Certificate of Conformity of Quality Management System Certification
武器装备质量管理体系认证证书



Certificate of Occupational Health and Safety Management System Certification
职业健康安全管理体系认证证书



Enterprise Credit Rating Certificate
企业信用等级证书



Certificate of High-tech Enterprise
高新技术企业证书



Certificate of Intellectual Property Management System Certification
知识产权管理体系认证证书

Part of Patent Certificates 部分专利证书



Part of Software Copyright Certificates 部分软著证书



Functions

功能介绍

A digital altimeter is used to indicate altitude while skydiving.

数字显示的高度表，用于跳伞时指示高度。

Characteristics

特点

- Digital altimeter that displays altitude or vertical speed during your jump
- HD High Contrast LCD Screen.
- Wider LCD viewing angle.
- Operational at sub-zero temperatures.
- Electroluminescent back light for night jumps
- Thicker case and lens to reduce the possibility of breaking or cracking under normal use.
- Records and displays jump information about the last 500 jumps including exit altitude, deployment altitude, freefall time, and max speed in freefall.
- Choice of display in feet or meters
- Waterproof and impact resistant aluminum alloy shell

- 数字显示、方便直观
- 高对比度，超宽视角液晶显示屏
- 阳光下清晰可读
- 防水、抗冲击航空铝合金外壳
- 配备高透明强化玻璃
- 适用于夜间跳伞的背光显示
- 准确的高度读数
- 方便的高度补偿功能
- 强大的跳伞日志功能
- 军规级可靠性，不惧高低温

• Altimeter 数字高度表



• Parachute Navigator 跳伞导航仪



Functions

功能介绍

An automatic Activation Device, also called AAD, is installed in the reserve parachute for an emergency situation such as a main parachute malfunction or a skydiver's inability to deploy the parachute. In case of emergency, the AAD will activate a reserve parachute to save the life of skydivers.

自动开伞器，简称AAD，安装在备份伞包中，在伞降作训险情突发情况（如主伞故障、伞兵无法自主开伞等）下，自动激活释放备份伞，挽救伞兵生命。

Characteristics

特点

- Self-test is completed in 10 seconds.
- Unique cutter design for a clean and reliable cut of the loop.
- User interface (Single push button)
- Always actual ground level by automatic compensation of weather-related air pressure changes.
- Reliable operation capable of storing over 500 parachute jump logs
- The altitude difference between the starting point and landing point can be set
- Built-in high-efficiency waterproof air filter, achieving IP67-level waterproof performance
- Extremely low power consumption, and free charge of battery replacement

- 开机10秒内完成自检
- 独特的切割器设计，可实现干净可靠的切割
- 操作简单，可有效防止误操作
- 可自动进行地面校准，补偿与天气相关的变化
- 自主算法，可准确识别运动状态
- 运行可靠，可存储500次以上跳伞日志
- 可设置起点、着陆点海拔高度差
- 航空铝机身，坚固耐用
- 内置高效防水空气过滤器，可实现IP67级防水
- 极低功耗，免更换电池
- 易于在伞包上安装

• Automatic Activation Device 自动开伞器



Functions

功能介绍

The "phantom" oxygen system is intended for supporting military parachuting missions with a maximum altitude of 25000 ft (10668 m). It is a demand based system that provides 100% oxygen for parachuters. In the preoxygenation and denitrogen phase, the auxiliary oxygen cylinder is connected to the descent cylinder to provide oxygen for parachuters. The system is rather easy to use and maintain, with long service life and high reliability.

“魅影”氧气系统，专门用于支持最高海拔35000英尺（10668米）的军事跳伞任务，这是一个基于需求的系统，为跳伞者提供100%的氧气，预吸氧排氮阶段由辅助氧气瓶连接到单兵氧气瓶，为跳伞者提供氧气，该系统非常易于使用和维护，寿命长，可靠性高。

Characteristics

特点

Descent cylinder
Volume: 2 L/3
Operating pressure: 3000 psi
Full weight: 2470 g/3150 g

Facemask
Inhalation pressure: 4.5-5.5 bar
Peak inhalation flow rate: 120 lpm
Inhalation resistance: 25 mmH2O
Exhalation resistance: <10 mmH2O
Anti-asphyxiation
valve resistance: <10 mmH2O
Storage temperature: -55°C to 70°C
Operating temperature
range: -40 to 5050°C
Humidity range: 0 to 100%
Maximum altitude of use: 35,000 ft

Auxiliary cylinder
Volume: 3 L/5L
Volume: 3 L/5 L
Full weight: 3150 g/5580 g

单兵氧气瓶：
容量：2L/3L
工作压力：3000psi
充满重量：2470g/3150g

辅助气瓶：容量：3L/5L
工作压力：3000psi
充满重量：3150g/5580g

氧气面罩：
吸入压力：4.5-5.5 bar
峰值吸入流量：120 lpm
吸入阻力：25 mmH2O
呼出阻力：<10 mmH2O
防室息阀阻力：<10 mmH2O
存储温度：-55到70°C
作温度范围：-40到50°C
湿度范围：0到100%
最大使用高度：35000英尺



• General Oxygen System for High-altitude 高空氧气系统

Functions

功能介绍

- Small size and light weight
- One-handed holding
- 26K TFT LCD Display

- 体积小，重量轻
- 26 K真彩显示屏
- GNSS定位

- Infrared temperature measurement
- GNSS positioning
- Radio silence

- 单手握持
- 红外测温
- 无线电静默

• Handheld Weather Station 手持气象仪



Functions

功能介绍

- Patented tactical ring design for quick and easy grasping
- Tactical Switch Design
- Front switch with built-in battery indicator light
- Magnetic charging system interface for convenient charging

- 专利战术环设计，极速轻松抓取
- 双尾战术开关设计——触Turbo和一触Strobe
- 前置开关内置电池指示灯
- 磁力充电系统接口，充电方便

• Strong flashlight 强光手电



Functions

功能介绍

It's an professional and comprehensive rigger kit bag containing all kinds of tools required for the packing such as the closing plate, locking pullup cord, temporary pin, etc., which helps the rigger to accomplish the packing in fast and right manner.

专业而全面的叠伞工具包，含有叠伞所需的各类工具，如包装板、拉绳、临时索针等等，可帮助叠伞员快速而正确的完成降落伞叠伞装配。

• Rigger Kit Bag 叠伞工具



Functions

功能介绍

The distance alarm for parachuting allows for monitoring of distance between jumpers and it reminds the jumper to shun away from others when the distance is less than the safety distance threshold. In this way, the distance awareness of jumpers will be enhanced to decrease the risks of collision and entanglement.

伞降距离报警器，可以在伞降过程中监测与他人之间的距离，当小于安全距离阈值时即发出报警，提醒人员注意躲避，可有效增强跳伞人员距离意识，降低与他人发生碰撞缠绕风险。

Особенности

特点

- High monitoring accuracy, sensitive response
- Multiple alarm modes in the form of buzzing sound and light
- Long-lasting standby
- Simple operation, one-button On/Off

- 监测精度高、响应灵敏
- 多种报警方式，蜂鸣+灯光
- 待机持久，工作时间长
- 操作简单，一键开关

• Distance Alarm 距离报警器



Functions

功能介绍

The multifunctional airborne combat load is convenient for paratroopers to carry materials for airborne operations. It can be used for military parachute missions such as high altitude - high opening, high attitude - low opening, and static line parachute jumping.

多功能伞兵携行具，便于伞兵携行物资进行空降，可用于高跳高开、高跳低开、绳拉跳伞等军事伞降任务。

Characteristics

特点

- Maximum carrying weight: 100kg/
- Weight of product: 3kg/
- Quickly release system
- Adjustable harness system
- Size: -Small: 580*410*300 mm - 72L
- Medium: 660*460*300mm - 92L
- Large: 760*460*410mm - 142L
- Size and color can be customized according to user needs.

- 最大携行重量：100kg
- 系统重量：3kg
- 三环悬挂系统，可快速释放
- 可调节背带系统

尺寸： S码：580*410*300mm-72L
M码：660*460*300mm-92L
L码：760*460*410mm-142L
尺寸颜色可根据用户需求定制

• Multifunctional Airborne Combat Load 伞兵携行具



Functions

功能介绍

It's suitable for beginners for better control of their bodies and the free fall speed and is convenient for the instructor to assist in the air.

适合初学者使用，可以更好的控制空中身体姿态和自由落体速度，方便教练在空中实施辅助。

Characteristics

特点

- Elastic fabric is used around the joints to facilitate limb movement
- Special protection for the hip and knees which is abrasion-resistant and tear resistant
- Brightly colored handles on the arms and legs for easy gripping by the coach
- Easy to put on and take off with middle upward opening design
- Quality windproof zipper, and magnetic collar buckle
- The tapering design of the collar and cuffs which effectively prevents the wind

- 关节周围采用弹力面料，有利于四肢活动
- 臀部和膝部特殊防护，耐磨抗撕裂
- 手臂和腿部具有鲜艳的把手，便于教练抓取
- 中间上开口设计，方便快速穿脱
- 高品质防风拉链，磁性领口搭扣
- 领口、袖口、脚口束口设计，有效防止进风

• Skydiving Suit 跳伞服



Functions

功能介绍

The system comprises airdropped materials, a harness system, a parachute, a pilot parachute, an automatic parachute opener, and a locator. It can realize the parachute opening at a low altitude, significantly reduce the time of stagnation and the drift distance with the wind, improve the efficiency of the airdrop, the precision of the airdrop landing point, and realize the precise delivery of military materials. The system equipped with high-precision locators can view the location of materials on the client and quickly find materials by one-click navigation. The airdrop box can be equipped with night signs for the night and water airdrop.

本系统由空投伞包、引导伞、吊挂系统、自动开伞装置、定位装置等部分组成，可使用我军现役和退役的伞兵9、备份6等伞衣，实现了装备伞的兼容性、通用性和退役伞的二次利用。可以实现高空投放、在极低高度开伞，大大减少滞空时间与随风漂移距离，有效提高高空投放效率和空投着陆点精度，实现装备物资的精准投放。配备的高精度定位器，可在客户端实时查看货物位置，能够一键导航，减少搜寻时间。空投箱可配备夜间标识和浮筒，可用于夜间空投和水上空投。

Characteristics

特点

- High altitude airdrop and low altitude deployment to reduce endurance time and achieve accurate delivery
- Deployment altitude can be set arbitrarily
- Compatible with active-duty and retired parachutes which reduces airdrop cost
- Accurate positioning and one-button navigation to reduce search time

- 高空投放、低空开伞、减少滞空时间、实现精准空投
- 高度开伞可任意设定
- 兼容现役和退役伞，节约空投成本
- 精准定位，一键导航，减少搜寻时间

● Targeted Airdrop Equipment 定点空投系统



SG-05

SG-05 是一款可搭载5Kg有效载荷的固定翼无人机，采用气动弹射架发射。机翼翼型采用抗高过载设计，主体采用碳纤维、蜂窝复合材料，能满足高速机动飞行的要求。

SG-05 Fixed Wing UAV can carry the payload of 5Kg. Launch using a pneumatic launcher. The wing profile adopts a high overload resistance design, and the main body is made of carbon fiber and honeycomb composite materials, which can meet the requirements of high-speed maneuvering flight.



工作航时	>120min(5000g 有效载荷);		
材质	碳纤维, 芳纶蜂窝	抗风能力	6级
翼展	2000mm	最大航速	120KM/h
长度	1766mm	导航方式	卫星导航
起飞重量	21Kg	发射方式	弹射
工作温度	-10°C ~ 50°C	载荷能力	5Kg
驱动方式	电驱动	最大俯冲角度	35°

Endurance	>90min(2000g payload);		
Material quality	EPO, carbon fibre	Wind loading	Level 6
Wing span	2000mm	Max cruise speed	120KM/h
Length	1766mm	Navigation method	Satellite navigation
Takeoff weight	12Kg	Launch method	Catapult
Work temperature	-10°C ~ 50°C	Loading capacity	5Kg
Driving method	Electric drive	Max dive angle	35°

SG-02

SG-02 是一款可搭载2Kg有效载荷的固定翼无人机，采用气动弹射架发射。机翼翼型采用抗高过载设计，能满足高速机动飞行的要求。主体采用EPO材质，支持批量快速交付。

SG-02 Fixed Wing UAV can carry the payload of 2Kg, launch using a pneumatic launcher. The wing profile adopts a high overload resistance design, which can meet the requirements of high-speed maneuvering flight. The main body is made of EPO material, supporting rapid delivery in batches.



工作航时	>90min(2000g 有效载荷);		
材质	EPO,碳纤维	抗风能力	6级
翼展	1830mm	最大航速	120KM/h
长度	1520mm	导航方式	卫星导航
起飞重量	12Kg	发射方式	弹射
工作温度	-10°C ~ 50°C	载荷能力	2Kg
驱动方式	电驱动	最大俯冲角度	35°

Endurance	>90min(2000g payload);		
Material quality	EPO, carbon fibre	Wind loading	Level 6
Wing span	1830mm	Max cruise speed	120KM/h
Length	1520mm	Navigation method	Satellite navigation
Takeoff weight	12Kg	Launch method	Catapult
Work temperature	-10°C ~ 50°C	Loading capacity	2Kg
Driving method	Electric drive	Max dive angle	35°

SG-SPECTER

SG-SPECTER 单兵便携式侦察定位无人机系统体积小，性能强，实现了远距离目标高斯直角坐标实时解算定位、记录捕捉战场实时动态等功能，具有定位精准、携带方便、操作简单、适用广泛等特点。

SG-SPECTER individual soldier portable UAV system is small in size and has strong performance. It realizes the functions of real-time solution and positioning of long-distance targets in Gaussian rectangular coordinates, recording and capturing the real-time dynamics of the battlefield, and has the characteristics of accurate positioning, convenient carrying, simple operation and wide application.



Owleyes
12X



INYYO
Q12



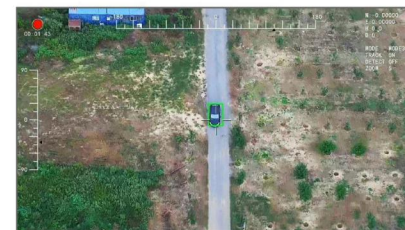
INYYO
R25



SG-SPECTER



目标定位
Target localization



目标跟踪
Target tracking

升级功能 Upgrade Features



目标属性编辑
Target attribute editing



目标位置转发
Target location forwarding

尺寸	500*500*145mm(展开)、395*138*145mm(折叠)		
轴距	600mm	轴数	四轴
工作温度	-10°C ~ 50°C	存储温度	-20°C ~ 60°C
驱动方式	电驱动	最大续航时间	30min
抗风等级	5级	实用升限	3000m
巡航速度	12m/s	通信距离	10KM
起飞重量	3.3Kg	防护级别	IP43

Size	500*500*145mm(Open)、395*138*145mm(Fold)		
Axial distance	600mm	Number of axles	Four-axial
Work Temperature	-10°C ~ 50°C	Storage temperature	-20°C ~ 60°C
Driving method	Electric drive	Max endurance	30min
Wind loading	level 5	Practical ceiling	3000m
Cruise speed	12m/s	Controlling Distance	10KM
Takeoff weight	3.3Kg	Protection level	IP43

SG-X6

SG-X6 是翔拓科技针对军旅、行业客户开发的一款侦察监视型无人机集成系统，采用六旋翼布局，大幅提升了飞行稳定性和安全性，可灵活拓展丰富的任务载荷执行复杂的侦察监视任务。

SG-X6 is reconnaissance and surveillance UAV integrated system developed for military and industrial customers. It adopts six rotor layout, greatly improves flight stability and safety, and can flexibly expand rich mission loads to perform complex reconnaissance and surveillance tasks.



INYYO
Q302



INYYO
Q303



INYYO
503



Owleyes
302



Owleyes
303



Owleyes
303-35



支持丰富的任务载荷
Support rich mission payload



目标定位
Target localization



目标跟踪
Target tracking

升级功能
Upgrade Features



目标属性编辑
Target attribute editing



目标位置转发
Target location forwarding

尺寸	1010*1010*450mm(展开)、435*435*390mm(折叠)		
轴距	850mm	轴数	四轴
工作温度	-10°C ~ 50°C	存储温度	-20°C ~ 60°C
驱动方式	电驱动	最大续航时间	45min
抗风等级	5级	实用升限	3000m
巡航速度	10m/s	通信距离	10KM
起飞重量	6.7Kg	防护级别	IP43

Size	1010*1010*450mm(Open)、435*435*390mm(Fold)		
Axial distance	850mm	Number of axles	Four-axial
Work Temperature	-10°C ~ 50°C	Storage temperature	-20°C ~ 60°C
Driving method	Electric drive	Max endurance	45min
Wind loading	level 5	Practical ceiling	3000m
Cruise speed	10m/s	Controlling Distance	10KM
Takeoff weight	6.7Kg	Protection level	IP43

SG-T200

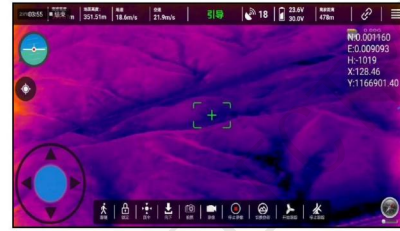
SG-T200 油电混动多用途无人机采用了7KW强制风冷型汽油发电机，携载能力强，航时长，工作稳定，可搭载不低于20Kg的有效载荷执行任务。

SG-T200 Oil-electricity Hybrid Multi-purpose UAV adopts 7KW forced air-cooled gasoline generator, which has strong carrying capacity, long endurance, and stable operation. It can carry the payload of no less than 20kg to perform tasks.

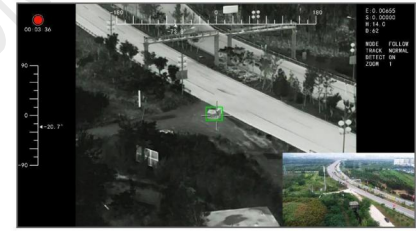


任务航时	>40min(载荷<20kg)		
材质	ABS、镁铝合金，碳纤维	发电机功率	7kW
展开尺寸	3160*3160*900mm	发电机油耗	7L/h
收纳尺寸	1000*1000*900mm	油箱容积	5L(可扩展)
最大起飞重量	60Kg	抗风能力	5级
最大载荷能力	20Kg	最大航速	12m/s
工作温度	-10°C ~ 40°C	海拔飞行高度	<1000m
驱动方式	油电混动	控制距离	5KM(可扩展为20KM)

Material quality	ABS, magnesium aluminum alloy, carbon fiber		
Endurance	>40min (payload <20Kg)	Generator power	7kW
Unfolded Size	3160*3160*900mm	Oil consumption	7L/h
Storage size	1000*1000*900mm	Fuel tank capacity	5L (Scalable)
Max takeoff weight	60Kg	Wind loading	Level 5
Max load capacity	20Kg	Max cruise speed	12m/s
Work Temperature	-10°C ~ 40°C	Practical ceiling	<1000m
Driving method	Oil-electric hybrid	Controlling Distance	5KM (Scalable to 20KM)



目标定位
Target localization

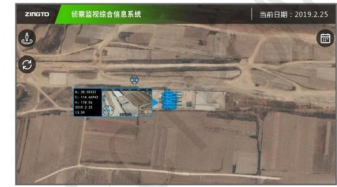


目标跟踪
Target tracking

升级功能 Upgrade Features



目标属性编辑
Target attribute editing



目标位置转发
Target location forwarding

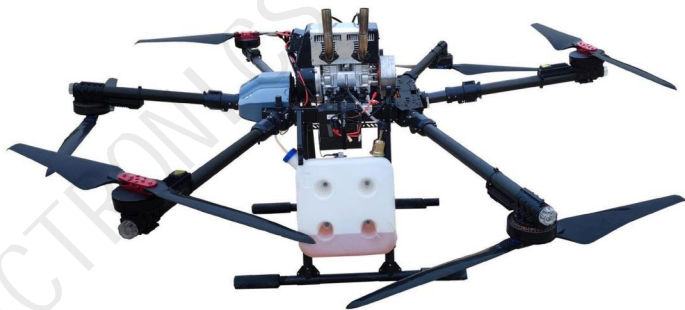
尺寸	1255*1305*505mm(展开)、630*665*465mm(折叠)		
轴距	1150mm	轴数 Axial-number	六轴
工作温度	-10°C ~ 50°C	存储温度	-20°C ~ 60°C
驱动方式	电驱动	最大续航时间	50min
抗风等级	5级	实用升限	3000m
巡航速度	10m/s	通信距离	10KM
起飞重量	11.5Kg	防护级别	IP43

Size	1255*1305*505mm(Open)、630*665*465mm(Fold)		
Axial distance	1150mm	Number of axles	Six-axial
Work Temperature	-10°C ~ 50°C	Storage temperature	-20°C ~ 60°C
Driving method	Electric drive	Max endurance	50min
Wind loading	level 5	Practical ceiling	3000m
Cruise speed	10m/s	Controlling Distance	10KM
Takeoff weight	11.5Kg	Protection level	IP43

SG-T40

SG-T40 油电混动多用途无人机采用了20KW强制风冷型汽油发电机，携载能力大，航时长，工作稳定，可搭载不低于40Kg有效载荷执行任务。

SG-T40 Oil-electricity Hybrid Multi-purpose UAV adopts 20KW forced air-cooled gasoline generator, which has large carrying capacity, long endurance, and stable operation. It can carry the payload of no less than 40kg to perform tasks.



任务航时	>30min(载荷<40Kg)		
材质	ABS、镁铝合金、碳纤维	发电机功率	20kW
展开尺寸	2950*3300*1200mm	发电机油耗	14L/h
收纳尺寸	1300*1100*1200mm	油箱容积	10L
最大起飞重量	125Kg	抗风能力	5级
最大载荷能力	50Kg	最大航速	12m/s
工作温度	-10°C ~ 40°C	海拔飞行高度	<1000m
驱动方式	油电混动	控制距离	5KM (可扩展为20KM)

Material quality	ABS, magnesium aluminum alloy, carbon fiber		
Endurance	>30min (payload <40Kg)	Generator power	20kW
Unfolded Size	2950*3300*1200mm	Oil consumption	14L/h
Storage size	1300*1100*1200mm	Fuel tank capacity	10L
Max takeoff weight	125Kg	Wind loading	Level 5
Max load capacity	50Kg	Max cruise speed	12m/s
Work Temperature	-10°C ~ 40°C	Practical ceiling	<1000m
Driving method	Oil-electric hybrid	Controlling Distance	5KM (Scalable to 20KM)

SG-E20

SG-E20 多用途无人机配备双电池系统，携载能力强，航时长，工作稳定可靠，可搭载不低于20Kg有效载荷执行任务。

SG-E20 Multi-purpose UAV has equipped with dual battery system, which has strong carrying capacity, long endurance, stable and reliable operation, and can carry the payload of no less than 20kg to carry perform tasks.



材质	ABS、镁铝合金、碳纤维	发电机功率	电动
展开尺寸	2840*2680*780mm	航时	>20min (载荷<15kg)
收纳尺寸	1200*780*910mm	抗风能力	5级
最大起飞重量	65Kg	最大航速	12m/s
载荷能力	20Kg	海拔飞行高度	<4000m
工作温度	-10°C ~ 50°C	控制距离	5KM (可扩展为20km)

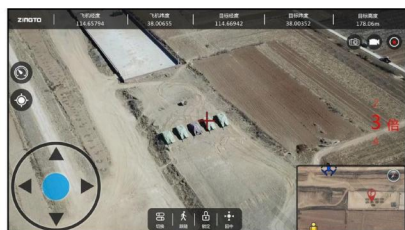
Material quality	ABS, magnesium aluminum alloy, carbon fiber	Generator power	Electric
Unfolded Size	2840*2680*780mm	Endurance	>20min (payload <15kg)
Storage size	1200*780*910mm	Wind loading	Level 5
Max takeoff weight	65Kg	Max cruise speed	12m/s
Load capacity	20Kg	Practical ceiling	<4000m
Work Temperature	-10°C ~ 50°C	Controlling Distance	5KM (Scalable to 20km)

云鹞 V5 垂直起降固定翼无人机系统采用了固定翼结合四旋翼的布局，具有航时长、速度高、距离远等优点，飞行模式安全灵活，可搭载多种载荷对目标区域实施昼夜侦查，并同时获取目标三维地理坐标信息。

YUNYAO V5 VTOL-fixed Wing UAV System adopts the layout of fixed wing combined with four-rotor, has the advantages of high speed, long flight time and distance, The flight mode is safe and flexible, can carry rich mission loads to detect the target area at day and night, simultaneously locate the target coordinates.



支持丰富的任务载荷 Support rich mission payload



目标定位
Target localization



目标跟踪
Target tracking

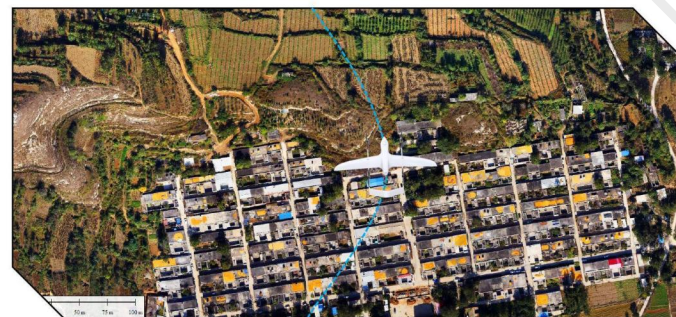
升级功能 Upgrade Features



目标属性编辑
Target attribute editing



目标位置转发
Target location forwarding



实时二维正射影像成图
Real time 2D orthophoto mapping

尺寸	1575*2700*608mm	起降方式	垂直起降
工作温度	-10°C ~ 50°C	存储温度	-20°C ~ 60°C
驱动方式	电驱动	续航时间	90min(含载荷)
抗风等级	6级	实用升限	4000m
巡航速度	75m/s	通信距离	20KM
起飞重量	13.5kg(载荷1.5kg)	防护级别	IP43

Size	1575*2700*608mm	Take off mode	VTOL
Work range	-10°C ~ 50°C	Storage range	-20°C ~ 60°C
Drive type	Electric drive	Battery life	90min(Load included)
Wind loading	level 6	Practical ceili	4000m
Cruise speed	75m/s	Control range	20KM
Takeoff weight	13.5kg(Payload 1.5kg)	Protection level	IP43

SG-150D

- 大载重
- 悬停功能
- 状态自检功能
- 自动返航保护
- 低电压状态报警

多旋翼系列



60kg
有效载荷

72km/h
巡航速度

30min
续航时间

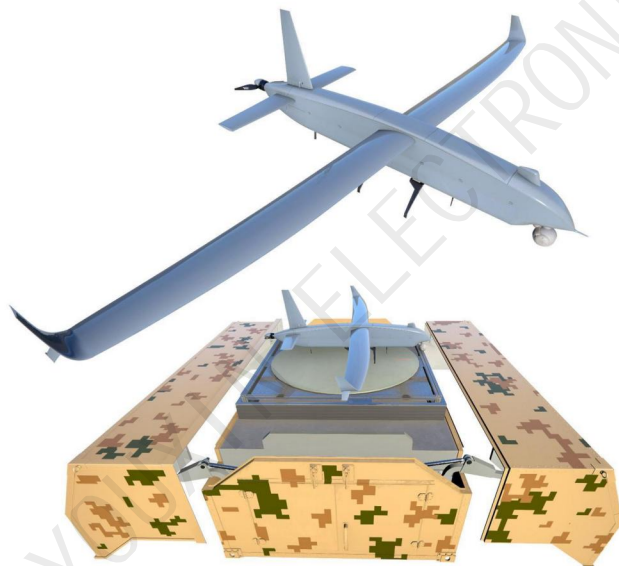
5000m
实用升限海拔

7级14m/s
抗风等级

SG-36GD

- 纯电、长航时
- 飞行仿真功能
- 支持一站多机
- 支持航线预览

复合翼蜂巢系列



36kg
起飞重量

10kg (海平面) 5kg (海拔5000m)
有效载荷

130km/h (36kg起飞重量)
巡航速度

4.5h
续航时间

7000m
飞机升限

>12m/s
抗风等级

人工影响天气/运输无人机SG-500Y

中大型固定翼系列

- ✳ 机体快速拆装
- ✳ 易损部件快速更换
- ✳ 应急/备份供电
- ✳ 同时搭载多种任务载荷
- ✳ 前起落架、主起落架可收放



630kg
起飞重量

≥80kg (舱内) ≥100kg (外挂)
有效载荷

120-160km/h
巡航速度

≥12h
续航时间

≥7500m
飞机升限

6级
抗风等级

运输无人机SG-5250Y

中大型固定翼系列

- ✳ 大载重
- ✳ 短距离起降
- ✳ 自主飞行
- ✳ 全天候作业
- ✳ 空中投放
- ✳ 快速响应



5250kg
起飞重量

≥1600kg
有效载荷

180-220km/h
巡航速度

≥10h
续航时间

≥5000m
飞机升限

6级
抗风等级

SG-30F(火炮巡飞子弹)

弹载无人机系列

- ✳ 某型火炮定制的巡飞弹蜂群
- ✳ 可搭载多种任务载荷
- ✳ 具有多种部署方式
- ✳ 可伞降回收，自主编队、蜂群协同

30kg
起飞重量

5kg
有效载荷

140km/h
巡航速度

40min
续航时间

6500m
飞机升限

6级
抗风等级



SG-56F(出口型蜂群无人机)

管式发射折叠翼系列

- ✳ 单车可组成12机自组网集群编队
- ✳ 响应迅速、快速成群
- ✳ 蜂群协同侦查与攻击
- ✳ 快速机动运输
- ✳ 停车即刻发射投入战斗
- ✳ 1小时留空作战能力
- ✳ 2021年科工正式出口立项

56kg
起飞重量

15kg
有效载荷

140-180km/h
巡航速度

1h
续航时间

6000m
飞机升限

6级
抗风等级



SG-9F

- ✳️ 低成本
- ✳️ 空投发射，多种发射方式
- ✳️ 管式发射，弹射架弹射起飞
- ✳️ 响应迅速、快速成群

管式发射折叠翼系列

9kg

起飞重量

2.5kg

有效载荷

35m/s

巡航速度

20min

续航时间

5000m

飞机升限

6级

抗风等级



SG-7F

- ✳️ 低成本
- ✳️ 空投发射，多种发射方式
- ✳️ 管式发射，弹射架弹射起飞
- ✳️ 响应迅速、快速成群

管式发射折叠翼系列

7kg

起飞重量

1kg

有效载荷

35m/s

巡航速度

40min

续航时间

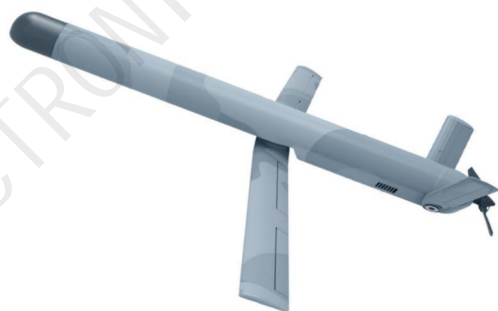
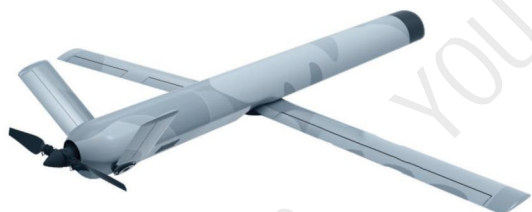
5000m

飞机升限

6级

抗风等级





Switch Blade UAV with Piston Engine

超低空长航时油动 折叠翼无人机



Open architecture, Plug and play
开放架构、即插即用



Extreme low-altitude flight
超低空飞行



Long endurance
超长航时



Belly landing/Parachuting
/Draped rope recovery
腹降、伞降、垂绳回收



Catapult/Gas/Rocket
launching
弹射、炮射、火箭发射



Integrated Reconnaissance
Attack UAV
密集存储、运输、发射

Model	TM S1	型号	天马S1
Power system	Piston engine	动力系统	活塞发动机
Size (mm)	Ø180*1800	收纳尺寸 (mm)	Ø180 × 1800
Weight (kg)	19	重量 (kg)	19
Payload (kg)	3	有效载荷 (kg)	3
Cruising speed (km/h)	130-160	巡航速度 (km/h)	130-160
Flight time(h)	6	航时 (小时)	6
Max range(km)	900	最大航程 (km)	900
Temperature	-40°C~+50°C	使用温度	-40°C~+50°C

Applicable scenarios

Integrated Reconnaissance/
Strike UAV

Extreme Low-Altitude
Penetration

Decoy/Disturbance

适用场景

察打一体

超低空突防

诱饵/干扰



Low Acoustics/Optics/Magnetics
electric switch blade UAV

低声光磁特征电动
折叠翼无人机



Open architecture, Plug and play
开放架构、即插即用



Extreme low-altitude flight
超低空飞行



low observable
低可探测性



Belly landing/Parachuting
/Draped rope recovery
腹降、伞降、垂绳回收



Catapult/Gas
/Rocket launching
弹射、炮射、火箭发射



Intensive storage
transport and launching
密集存储、运输、发射

Applicable scenarios

Squads attack/support

Attack swarm

适用场景

班组进攻/支援

进攻性蜂群

Parameter	TM S2	TM S3	TM S4	型号	天马S2	天马S3	天马S4
Power system	Motor			动力系统	电机		
Storage size(mm)	Ø110*1300	Ø140*1620	Ø180*2100	收纳尺寸(mm)	Ø110*1300	Ø140*1620	Ø180*2100
Weight (kg)	6	12	20	重量 (kg)	6	12	20
Payload (kg)	0.5	2	5	有效载荷 (kg)	0.5	2	5
Cruise speed (km/h)	90-120	90-120	90-120	巡航速度 (km/h)	90-120	90-120	90-120
Flight time(min)	30	50	60	航时 (min)	30	50	60
Max range(km)	50	100	100	航程 (km)	50	100	100
Temperature	-40°C~+50°C			使用温度	-40°C~+50°C		



FL 20/30 VTOL 飞龙20/30 复合翼无人机



VTOL
垂直起降



Easy to use
使用便捷



High Speed Flight
高速飞行



Large payload
大载荷



Long-endurance
长航时



High integration
高集成度

Parameter	FL 20	FL 30	参数	飞龙20	飞龙30
Length (mm)	2100	2350	长度(mm)	2100	2350
Wing span (mm)	3600	4200	翼展(mm)	3600	4200
MTOW (kg)	16	30	最大起飞重量(kg)	16	30
Payload (kg)	1	5	最大有效载荷(kg)	1	5
cruising speed (km/h)	100	120	巡航速度(km/h)	100	120
Flight time (h)	2	5	航时(h)	2	5
Flying range (km)	200	600	航程(km)	200	600
Max Flight Altitude (m)	3000	3000	升限(m)	3000	3000
Power system	Electric	Gasoline	动力系统	电动	油动
Maximum wind resistance	Force 6 wind	Force 6 wind	最大抗风	6级风	6级风
Usage environment	-10°C~45°C	-10°C~45°C	使用温度	-10°C~45°C	-10°C~45°C

Applicable scenarios

Reconnaissance | Emergency | Rescue

适用场景

侦察 | 应急 | 救援



应用 / 查打一体 / 轰炸

通过高清吊舱和准确的投弹系统，对目标进行高空侦察、精准轰炸及战损评估。

功能特点

【持久飞行】

最大飞行时间360分钟

【强抗干扰】

使反无人机防御系统无效

【隐身性强】

低慢小目标，电驱动无热源，雷达反射面小

飞行平台

 <p>SG-1B</p> <p>4KG</p> <p>150MIN</p> <p>35-40M/S</p>	 <p>SG-2B</p> <p>2KG</p> <p>45MIN</p> <p>35M/S</p>
 <p>SG-3B</p> <p>10KG</p> <p>200MIN</p> <p>35-40M/S</p>	 <p>SG-4B</p> <p>10KG</p> <p>80MIN</p> <p>15M/S</p>
 <p>SG-5B</p> <p>20KG</p> <p>240MIN</p> <p>50M/S</p>	 <p>SG-7B</p> <p>50KG</p> <p>360MIN</p> <p>35M/S</p>

参数对比

参数	SG-1B	SG-2B	SG-3B	SG-4B	SG-5B	SG-7B
最大载重	4 KG	2 KG	10 KG	10 KG	20 KG	50 KG
起飞重量	16 KG	5 KG	30 KG	28 KG	55 KG	120 KG
最长飞行时间	150 MIN	45 MIN	200 MIN	80 MIN	240 MIN	360 MIN
巡航速度	19-20 M/S	0-22 M/S	20-24 M/S	0-15 M/S	20-22 M/S	20-22 M/S
最高速度	35-40 M/S	22 M/S	35-40 M/S	15 M/S	50 M/S	35 M/S

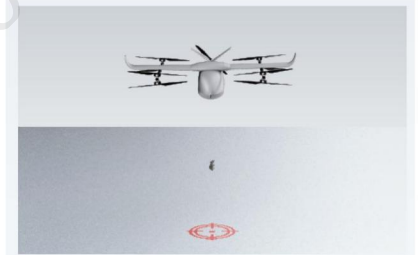
SG-5BA

Payload/Range: 10kg /70km ;20kg /60km ;30kg /30km



Cost- Effective

- Multiple configurations
- Low-cost UAV platform



Multifunction

- Precision Throwing
- Parachute Drop/Rappelling
- Adapt to a variety of mounts, anti-personnel, anti-light armor, anti-equipment



Easy to Operate

- Fully Automated Flight, Simple Training
- Easy Assembly, Quick Deployment and Easy Transportation

Cruising Speed	15-25m/s	Diagonal Wheelbase	≤1.8m
Max.Service Ceiling	4500m	Cargo Dimensions	Not yet determined
Max.Wind Resistance	Force 7 Wind	Max.Takeoff Weight	85kg
IP Rating	IP55	Payload/Range	10kg/70km;20kg/60km;30kg/30km

投弹器 / Wyvern投弹器

Wyvern投弹器，是针对迫击炮设计的投弹装置，采用可靠稳定的卡钳式固定结构，可一键上弹，带有保险销，可通过远程地面站的拨杆装置触发投弹，或航线自动投放。



功能特点	
可靠稳定	卡钳式固定结构，可适配多种尺寸
一键操作	支持一键操作，带有保险销
远程操控	支持地面站远程触发投弹
自动投放	支持自动生成投放航线
产品参数	
装弹口径/重量	82mm(3.1kg) / 60mm(1.6kg) / 120mm(13.5kg)
装配数量	数量可选，取决于飞行器载重能力
触发方式	自动航线/人工
装弹方式	弹簧卡钳
保险装置	插销
材质	铝合金+碳板

数据链 / MD80/AD80



MD80

MD80无人机数据链，传输距离可达到80km，并可有效躲避无人机反制设备干扰，提升飞行安全性。



AD80

AD80无人机数据链，传输距离可达到80km，跟踪天线有效提高数据传输稳定性，并可有效躲避无人机反制设备干扰，提升飞行安全性。

功能特点	MD80	AD80
集成度高		集成化设计，提高传输稳定
性能稳定		快速散热设计，提高性能稳定度
可靠性高		数据加密解码传输，保证信息安全
躲避反制		具备自动躲避反制产品功能，提升飞行安全性
80千米+图传距离		行业领先的80km以上传输距离
天线跟踪	-	附带跟踪天线，提高数据传输稳定性
产品参数		
工作频段		1.4GHz
信道带宽		5/10/20MHz
输出功率		33dBm±1dB
通讯距离		80-100km
空中速率		30Mbps@20MHz
功耗		<10W

云台 / 日间相机



M7

搭载4200万高清正射相机，远程高空对目标阵地拍摄高清正射影像，可快速制作厘米级战地指挥图和中后期分析目标动态。



V30S

专为白天场景设计，具有高清画面回传，360°航向自由旋转，锁定目标、画面跟踪。



V30 Lite

专为白天场景设计，具有高清画面回传，360°航向自由旋转，锁定目标、画面跟踪。

功能	Dragon M7	Dragon V30S	Dragon V30Lite
具有高精度视轴稳定功能	•	•	•
具备可见光成像功能	•	•	•
具备红外成像功能	-	-	-
具有探测、识别地面目标的能力	-	•	-
具有自动捕获功能	-	•	-
具有搜索、跟踪、锁定、引导等工作模式	-	•	-
具有字符叠加显示功能	-	•	-
具备拍照录像功能	•	•	•
具有目标GPS信息记录	-	•	-
具备光学变焦功能	-	-	•
具备迅速测绘能力	•	-	-

可见光变倍摄像机	M7	V30S	V30Lite
工作波长		0.4 μm-0.9 μm	
传感器	35.9*24.0mm	1/3"CMOS	1/3"CMOS
有效像素	4240万, 7952*5304	212万	400万
分辨率		1920 (H)*1080 (V)	
焦距	35mm	5.1-50mm, 光学10倍连续变焦	
水平视场	-	68°~6.7°	
识别距离	-	≥1km (目标尺寸 2.3m*2.3m)	-
录像	具备	-	2560*1440
伺服性能指标			
搜索范围	-	方位轴: n°360°/俯仰轴: -40°~90°	方位轴: 280°/俯仰轴: -40°~90°
测角精度	-	≤2mrad	
稳定精度	-	≤100μrad	
角速度	-	≥60°/s	
角加速度	-	≥60°/s ²	
跟踪性能指标			
像素偏差更新速率	-	50Hz	-
跟踪速度	-	30像素/帧	-
最小跟踪目标大小	-	4*3像素	-
最小目标对比度	-	5%	-
跟踪位置	-	视场任意位置	-
成像滚转、放大缩小时目标跟踪不滑移、不丢失的	-	•	-
电气特性			
通讯接口	-	1 路串口	
视频接口	-	1 路网口	
电源特性			
标称直流电压	-	12V	
正常供电电压范围	-	20V~28V	
平均功耗	-	≤30W	
峰值功耗	-	≤50W	
结构参数			
重量	-	≤0.8kg	
使用环境			
工作温度	-	-20°C~60°C	

• 具备 - 不具备

云台 / 夜间相机



Dragon VT30

双光吊舱集成可见光、红外功能，具有白天黑夜作战能力。



Dragon T50R

双光吊舱集成红外和激光雷达测距，可将目标位置的精准距离通过无人机测量，提供米级目标定位。



Dragon VT1

集成可见光、红外和激光雷达测距，具有白天黑夜作战能力，可将目标位置的精准距离通过无人机测量，提供米级目标定位。

功能	Dragon VT30	Dragon T50R	Dragon VT1
具有高精度视轴稳定功能	•	•	•
具备可见光成像功能	•	•	•
具备红外成像功能	•	•	•
具有探测、识别地面目标的能力	•	•	-
具有自动捕获功能	•	•	-
具有搜索、跟踪、锁定、引导等工作模式	•	•	-
具有字符叠加显示功能	•	•	•
具有目标GPS信息记录	•	•	-
具有自检和故障诊断功能	•	•	-
具有激光照射、测距功能	•	•	-
具有拍照录像功能	-	-	•
结构参数			
重量	≤1.2kg		≤0.5kg
使用环境			
工作温度	-20°C~60°C		

可见光变倍摄像机	Dragon VT30	Dragon T50R	Dragon VT1
工作波长	0.4 μm~0.9 μm		
传感器/像元尺寸	传感器1/3"CMOS	传感器1/2.8"CMOS	像元尺寸1.12 μm
有效像素	212万		1300万
分辨率	1920 (H)*1080 (V)		
焦距	5.1-50mm, 光学10倍连续变焦	4.3-12.9mm, 光学10倍连续变焦	3.5mm
水平视场	68°~6.7°	63.7°~2.3°	70.4°~39.6°
识别距离	≥1km (目标尺寸 2.3m*2.3m)	≥2.6km (目标尺寸 2.3m*2.3m)	-
长波非制冷红外成像			
工作波长	8-14 μm	-	8-14 μm
焦距	19 mm	-	9.1 mm
探测器	12 μm	-	12 μm
分辨率	640 (H)*512 (V)	-	640 (H)*512 (V)
视场角	22.9°*18.4°	-	48.3°*38.6°
识别距离	≥600m (目标尺寸 2.3m*2.3m)	-	-
激光测照器			
工作波长	-	905nm	-
激光能量	-	≥25mJ	-
测距性能	-	测距范围: 120m~3km	-
测距精度	-	≤2m	-
测准率	-	≥98%	-
照射性能	-	编码方式: 精确频率码	-
照射模式	-	一次照射持续时间不小于 20S	-
伺服性能指标			
搜索范围	方位轴: n°560°俯仰轴: -40°~90°		方位轴: 280°俯仰轴: -40°~90°
测角精度	≤2mrad		
稳定精度	≤100μrad		
角速度	≥60°/s		
角加速度	≥60°/s ²		
跟踪性能指标			
像素偏差更新速率	50Hz		-
跟踪速度	30像素/帧		-
最小跟踪目标大小	4*3像素		-
最小目标对比度	5%		-
跟踪位置	视场任意位置		-
成像滚转、放大缩小时目标跟踪不滑移、不丢失的	•		-
电气特性			
通讯接口	1 路串口		
视频接口	1 路网口		
电源特性			
标称直流电压	12V		
正常供电电压范围	20V~28V		
平均功耗	≤30W		
峰值功耗	≤50W		

• 具备 - 不具备

云台 / 雷达测距相机



Dragon VT30R

集成可见光、红外和激光雷达测距，具有白天黑夜作战能力，可将目标位置的精准距离通过无人机测量，提供米级目标定位。



Dragon V360R

集成可见光和激光雷达测距，可将目标位置的精准距离通过无人机测量，提供米级目标定位。



Dragon VT360R

集成可见光、红外和激光雷达测距，具有白天黑夜作战能力，可将目标位置的精准距离通过无人机测量，提供米级目标定位。

功能	Dragon VT30R	Dragon V360R	Dragon VT360R
具有高精度视轴稳定功能	•	•	•
具备可见光成像功能	•	•	•
具备红外成像功能	•	-	•
具有探测、识别地面目标的能力	•	•	•
具有自动捕获功能	•	•	•
具有搜索、跟踪、锁定、引导等工作模式	•	•	•
具有字符叠加显示功能	•	•	•
具有目标GPS信息记录	•	•	•
具有自检和故障诊断功能	-	•	•
具有激光照射、测距功能	-	•	•
具有拍照录像功能	•	-	•
可见光变倍摄像机			
工作波长		0.4 μm-0.9 μm	
传感器		1/2.8" CMOS	
有效像素/像元尺寸		有效像素 212 万	像元尺寸 2.8 μm
分辨率		1920 (H)*1080 (V)	
焦距	4.3-129mm, 光学10倍连续变焦		4.3-129mm, 光学30倍连续变焦
水平视场		63.7°~2.3°	
识别距离	≥2.6km (目标尺寸 2.3m*2.3m)		≥4km (目标尺寸 3m*6m)

长波非制冷红外成像	Dragon VT30R	Dragon V360R	Dragon VT360R
工作波长	8-14 μm	-	8-14 μm
焦距	19 mm	-	35 mm/F1.0
探测器	12 μm	-	12 μm
分辨率	640 (H)*512 (V)	-	640 (H)*512 (V)
视场角	22.9°*18.4°	-	12.4°*9.9°
识别距离	≥600m (目标尺寸 2.3m*2.3m)	-	≥1000m (目标尺寸 3m*6m)
激光测照器			
工作波长		905 nm	1535 nm
激光能量		≥25 mJ	-
测距性能		测距范围: 120 m-3 km	-
测距精度		≤2 m	±1 m
测距频率		-	5 Hz
激光测距距离		-	50-3000 m
测准率		≥98%	-
照射性能		编码方式: 精确频率码	-
照射模式		一次照射持续时间不小于 20S	-
伺服性能指标			
搜索范围	-	方位轴: n°360°俯仰轴: -40° - 90°	方位轴: n°360°俯仰轴: -10° - 110°
测角精度	-	-	≤2mrad
稳定精度	-	-	≤100μrad
角速度	-	≥60°/s	≥50°/s
角加速度	-	≥60°/s ²	≥90°/s ²
跟踪性能指标			
像素偏差更新速率	-	-	50Hz
跟踪速度	-	-	30像素/帧
最小跟踪目标大小	-	-	4*3像素
最小目标对比度	-	-	5%
跟踪位置	-	-	视场任意位置
成像滚转、放大缩小时目标跟踪不滑移、不丢失的	-	-	•
电气特性			
通讯接口	-	-	1 路串口
视频接口	-	-	1 路网口
电源特性			
标称直流电压	-	-	12V
正常供电电压范围	-	-	20V-28V
平均功耗	-	-	≤30W
最峰值功耗	-	-	≤50W
结构参数			
重量	-	-	≤1.2kg
使用环境			
工作温度	-	-	-20°C-60°C

• 具备 - 不具备

云台 / 激光照射相机

Dragon VT360RL

集成可见光、红外和激光雷达测距，具有白天黑夜作战能力，可将目标位置的精准距离通过无人机测量，提供米级目标定位。



功能	Dragon VT360RL
具有高精度视轴稳定功能	•
具备可见光成像功能	•
具备红外成像功能	•
具有探测、识别地面目标的能力	•
具有自动捕获功能	•
具有搜索、跟踪、锁定、引导等工作模式	•
具有字符叠加显示功能	•
具有目标GPS信息记录	•
具有自检和故障诊断功能	•
具有激光照射、测距功能	•
可见光变焦摄像机	
工作波长	0.4 μm-0.9 μm
传感器	1/2.8" CMOS
有效像素/像元尺寸	2.8 μm
分辨率	1920 (H)*1080 (V)
焦距	4.3-129mm, 光学30倍连续变焦
水平视场	63.7°-2.3°
识别距离	≥4km (目标尺寸 2.3m*2.3m)
长波非制冷红外成像	
工作波长	8-14 μm
焦距	35 mm / F1.0
探测器	12 μm
分辨率	640 (H)*512 (V)
视场角	12.4°*9.9°
识别距离	≥1000m (目标尺寸 2.3m*2.3m)
激光测照器	
工作波长	1064 nm
激光能量	≥25 mJ
测距性能	测距范围: 120 m-5 km
测距精度	≤3 m
测准率	≥98%
照射性能	编码方式: 精确频率码
照射模式	一次照射持续时间不小于 20S

• 具备 - 不具备

设备 / 侦测器

TDOA 10

可在10公里测控范围内，对反制无人机系统侦测定位，引导后期火炮进行攻击。可以提供无线电监测、无人机反制设备的识别定位、行走轨迹跟踪等功能。



功能特点		TDOA 10
安全性高	主动侦测反制系统，进行避让	
灵活布控	可搭载在不同无人机飞行平台	
产品参数		
尺寸(L*W*H)	260mm*260mm*637mm	
重量	≤10kg	
工作温度	-20~55°C	
探测站点功耗	≤50W	
系统供电	220V交流 / 12V直流	
组网形式	光纤、路由器、网桥	
工作模式	无源探测多点TDOA定位	
作用对象	无线电干扰反制设备	
覆盖角度	方位0°-360° 俯仰0°-90°	
探测距离	≥5km (空旷无障碍区域)	
工作频率	100MHz-6GHz (包括但不限于400MHz、500MHz、800MHz、900MHz、1.2GHz、1.4GHz、2.4GHz、5.1GHz、5.8GHz、5.9GHz)	
定位跟踪		
刷新时间	≤1s	
定位精度	≤50m	
定位跟踪速度	0m/s-30m/s	
同时定位数量	≥5	
定位高度范围	0m-500m	

地面站 / LS1



LS1 无人机地面站

具有高清图像回传、规划航线、调整飞行模式、获取飞行状态、操控无人机挂载等功能；为提高恶劣环境下的使用性能，工业三防等级高达IP54；远程操控设计，内置了远距离通信电台、高清图像接收机、独立显示大屏、高性能工控机主板等模块。

功能特点		LS1 地面站
集成度高		集成遥控、挂载控制、航线规划等功能于一体
超长续航		内置智能电池，续航时间可达4小时
高亮屏显		双屏显示15.6寸高清图像显示上屏；12.1寸高清高亮下屏，亮度可达1500nits
高性能		搭载性能强大的工控级电脑主板，采用Win10系统，搭载高性能intel i7处理器
高防护		防护等级可达IP54
产品参数		
重量		8.4kg
尺寸		长307.5mm*宽407.5mm*高102mm
外壳		铝合金+橡胶
脚架		固定快拆三脚架
电池		18650电池，13Ah；续航时间4小时
视频输出		外置USB转HDMI
工作温度		-20~60°C
保存温度		-20~70°C
电脑		Intel酷睿处理器i7_6650U；内存8G(可扩展)；固态硬盘128G最大支持1T扩展
显示屏		15.6寸图像显示，分辨率1920*1080；12.1寸电脑显示，亮度1500nits

地面站 / LS2



LS2 移动式地面站

LS2 整合了全新图传系统，使图传距离可以达到20Km，并且支持双控功能，可实现飞机与挂载分开控制。产品内置GPS内置4G模块，有线无线投屏等特色功能。

功能特点		LS2 移动式地面站
高清图传		1080P高清图传,20km传输距离
超长续航		使用可拆卸电池,续航长达3.5小时
一机双控		可实现一机双控功能
开源接口		开源的地面站软件与SDK接口
多路输入		支持HDMI与网络视频同时接入
产品参数		
重量		530g
尺寸		长218mm*宽106mm*高32mm
外壳		塑胶
系统		安卓
电池		两节18650
显示屏		5.5英寸；1000nits亮度；1080P
工作功率		6W
通讯距离		20km
图传天线		2.4GHz

SGD-100 | 手持式频谱信号感知与分析仪

Handheld Spectrum Signal Perception And Analyzer



- ◆ Spectrum signal perception
- ◆ Drone identification and detection
- ◆ Tracking and Direction Finding UAV Manipulator
- ◆ Full band detection
- ◆ Real time spectrum signal analysis and demodulation

设备参数总表

频率范围	Frequency Range	50MHz-6GHz
无人机侦测距离	Drone Detection Distance	1KM
遥控器侦测距离	Uav Manipulator Detection Distance	500M
瞬时带宽	Instantaneous Bandwidth	56MHz
信号捕获最小时间分辨率	Minimum Time Resolution For Signal Capture	35uS
最小频率分辨率带宽	Minimum Frequency Resolution Bandwidth	12.5KHz
接收机灵敏度		
2400MHz-2500MHz	≥ -113dbm	
5700-5800MHz	≥ -110dbm	
其他频段	≥ -96dbm	
内置GPS/BOUDOU/GLONASS/日本QZSS 卫星导航定位器	Built-in GPS/BOUDOU/GLONASS/Japan QZSS satellite navigation locator	
电池与工作时长	Battery And Operating Hours	8AH,4H
整机尺寸	Size	682mm*538mm*369mm
重量	Weight	5KG

智慧频谱 · 智能未来

SGD-LIMITER10

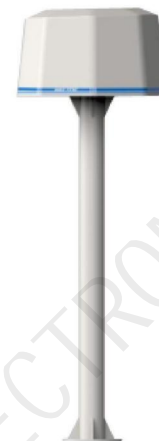
无人机自动反制器 (限飞器)

Unmanned Aerial Vehicle Unmanned Reconnaissance Strike Integrated Jammer

设备介绍

LIMITER 10反制器具备自动化、智能化, 自动侦测后有目标地自动反制, 无目标不发射信号, 降低环境影响。

The LIMITER 10 jammer has automation and intelligence, and after automatic detection, it can automatically interfere with the target ground, transmit signals without targets, and reduce environmental impact.



设备参数总表

技术指标	Technical Indicators	
侦测范围	Detection Range	70MHz-6GHz
侦测距离	Detection Distance	1KM
反制频段	Interference Frequency Band	2.4G、5.8G
反制距离	Interference Distance	1KM
整机尺寸	Size	500*544*369mm
重量	Weight	12KG

智慧频谱 · 智能未来

SGD-WF2020

无人机侦测与反制一体化设备

Integrated Equipment For Drone Detection And Interference

设备介绍

Wf2020型是通过公安部安全与警用电子产品质量检测中心检测认证的无人机察打一体专用系统，该系统用于无人机侦测、识别和干扰。系统可识别机型库以外的未知无人机，并且具备无人机信号录制功能。

The WF2020 model is a specialized drone detection and interference integrated system certified by the Safety and Police Electronic Product Quality Testing Center of the Ministry of Public Security. This system is used for drone detection, identification, and interference. The system can identify unknown drones outside the model library and has the function of recording drone signals.



设备参数总表

技术指标	Technical Indicators	
侦测范围	Detection Range	70MHz-6GHz
实时处理带宽		168MHz
侦测距离	Detection Distance	>5KM (郊区空旷环境)
反制频段	Interference Frequency Band	900M、1.5G、2.4G、5.8G(选配1.2G、5.2G, pro版本)
反制距离	Interference Distance	1KM
整机尺寸	Size	500*500mm
重量	Weight	13.5KG

智慧频谱 · 智能未来

SGD-W30

智慧频谱反无人机设备

Smart Spectrum Anti-UAV Equipment

设备介绍

W30具备专业的信号处理能力，480MHz实时处理带宽，扫描、识别和定位无人机；具备无人机跳频信号快速追踪能力，多天线阵列设计，适合城市复杂的电磁环境。

W30 has professional signal processing capabilities, 480MHz real-time processing bandwidth, and can scan, identify, and locate unmanned aerial vehicles; It has the ability of rapid tracking of UAV frequency hopping signals, and multi antenna array design, which is suitable for complex electromagnetic environment in cities.



设备参数总表

技术指标	Technical Indicators	
侦测范围	Detection Range	10MHz-6GHz
实时处理带宽		480MHz
侦测距离	Detection Distance	>5KM (郊区空旷环境)
反制频段	Interference Frequency Band	900M、1.5G、2.4G、5.8G(选配1.2G、5.2G, pro版本)
反制距离	Interference Distance	1KM
整机尺寸	Size	470*600mm
重量	Weight	16.5KG

SGD-C30/C2020

车载无人机防御系统

Vehicle Mounted Unmanned Aerial Vehicle Defense System

设备介绍

车载系统拥有独特的智能增益和参考电平专利设计，自适应复杂的电磁环境，能充分地满足体育赛事、重大会议以及庆典等临时性活动的保障需要；可根据实际需要增加全向干扰设备。



The onboard system has a unique intelligent gain and reference level patented design, which adapts to the complex electromagnetic environment and can fully meet the support needs of temporary events such as sports events, major conferences, and celebrations; Omnidirectional interference devices can be added according to actual needs.

设备参数总表

		C2020	C30
技术指标	Technical Indicators		
侦测范围	Detection Range	70MHz-6GHz	10MHz-6GHz
实时处理带宽		168MHz	480MHz
侦测距离	Detection Distance	>5KM (郊区空旷环境)	>5KM (郊区空旷环境)
反制频段	Interference Frequency Band	900M、1.5G、2.4G、5.8G (选配1.2G、5.2G, pro版本)	900M、1.5G、2.4G、5.8G (选配1.2G、5.2G, pro版本)
反制距离	Interference Distance	1KM	1KM
整机尺寸	Size	650*533*370mm	650*533*370mm
重量	Weight	25KG	25KG

Change-line-free shooting tactical system (Electronic Night Vision)



Product functions

Applicable to military, police, special troops (commando), frontier defence, customs and other law enforcers and disciplined armies to implement of anti-terrorism, sudden emergencies, violence, hostages rescue, anti-drug, anti-contraband. On the premise of not to expose each part of the body, the users can observe the building, vehicles, ships, aircraft at the field of vision within blind area, control and eliminate the targets hiding in the corner.

Detailed Pictures



Specification

Product Name	Change-line-free shooting tactical system (Electronic Night Vision)
Product Model	SZ09-1 (DV)
Suitable Pistol Type	Glock 17
Weapon rotation range	180°, -90°~+90° change-line-free
Mechanical Angular Velocity	90°/ 1s
Max Weight (without Pistol)	≤2.65kg
Max Length (without Pistol)	740mm
Max Length (without Butt)	570mm
Magnification	1X
Sighting System	Day Colour & Low Light Night Vision Camera LED Torch IR Illuminator IR Laser Electronic Cross Hair
Colour Display	0.44 inch aim screen with a cross hair and brightness level control facility 2.5 inch (Resolution 640*480) side screen with a cross hair and brightness level control facility
Battery Type	18650 Lithium Ion rechargeable Battery (3 pcs)
Pistol Detachability	Easily detachable within 1 minute
Operating Temperature	System operating temperature: -20°C-50°C Charging temperature: 0°C-45°C

Change-line-free shooting tactical system



Summary

Change-line-free shooting tactical system is a kind of operation platform for realization of pistols' change-line aiming and shooting. It provides a new means of attack and defense for the troop, armed police and public security. The system overcame the tactical and technical design insufficiencies among similar products by adopting brand-new design concept and structural format, and achieved the purpose of the shooters revolved the weapon freely to collimate and shoot in the case of completely concealment. The platform can accomplish monitors, combats or fights as well as avoid shooter exposure and insure the safety of shooter, which improved system reliability and flexibility. The product is in the highest flight in land.

Product functions

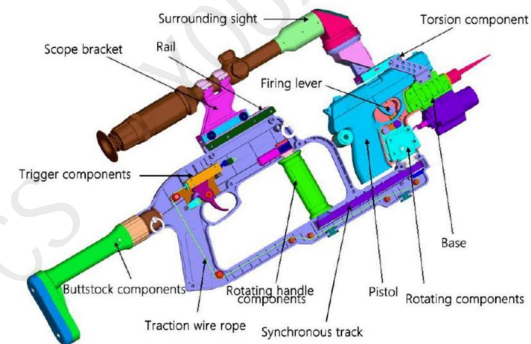
Applicable to military, police, special troops (commando), frontier defence, customs and other law executors and disciplined armies to implement of anti-terrorism, sudden emergencies, violence, hostages rescue, anti-drug, anti-contraband. On the premise of not to expose each part of the body, the users can observe the building, vehicles, ships, aircraft at the field of vision within blind area, control and eliminate the targets hiding in the corner.

Main technical index

System index	
Weapon mechanical corner range	180°±90°
Mechanical corner velocity	90°/ 1s
Linkage percussion trigger Pull	≤3.8 kg
Sight's cycle-view corner range	180°±90°
System weight	3.85kg
Cycle-view observation mirror	
Magnification	1~4 ^x
Field of View	4~16°
Exit pupil diameter	5~9mm
Exit pupil	70~76mm

System structure

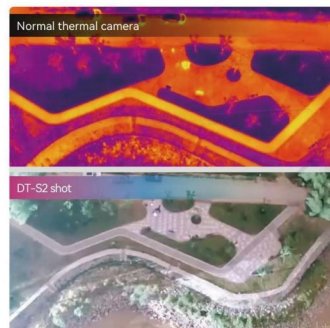
System structure diagram



DT-S2



FOR DJI M300/210/350RTK

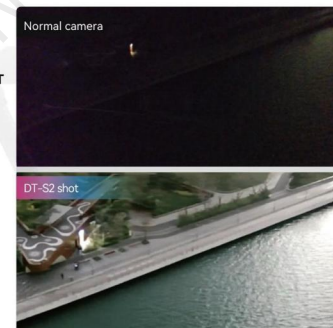


DT-S2

ADVANCING INTO THE NIGHT



SUITABLE FOR
DJI M300 / M210/M350



PAIN POINT

Effective images cannot be obtained in low light environment

Additional lighting is required for night work

It is difficult and inefficient to deal with emergencies at night

VALUE

Sensing and imaging full-color high-definition images in a low-light environment

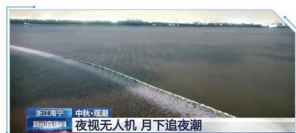
DT-S2 can meet the night operation requirements

Provide a fast and effective solution for night emergencies

SPECIFICATIONS

Product name	Full-color night vision UVA Payload DT-S2
Product type	UAV payload
Product model	DTU-Z20A-12D
Image sensor	1/1.8" Super Starlight CMOS
Min.Illumination	Full-color 0.005Lux
Resolution	2 million pixels 1920x1080, 16:9
FPS	5fps - 30fps
Video compression	H.264
White Balance	Auto
Gain control	Auto
Update	Support
Log Function	Support
WDR	120dB
S/N	> 52dB
AI DNR	Support
HDR	Support
Exposure Mode	Auto

RECENT CASES



CCTV Qiantang River tide live broadcast

River course inspection of a local maritime safety bureau in Jiangsu province



Guangdong an emergency response bureau forest fire prevention



Night patrol control in a certain area of Beijing

Full color vision Solution

FULL-COLOR NIGHT VISION MONOCULARS

P8-PRO



PRODUCT INTRODUCTION

Ful-color monocular night vision P8 PRO is a mobile image product with excellent night vision ability. Equipped with AI ISP algorithm engine, it can image high-definition full-color images in real time even in the extremely weak light environment of at least 0.003LUX. This product has the features of full-color night vision imaging, small size, light weight, large angle of view, long visual distance, etc., suitable for temporary control at night, concealment and squatting, detection and forensics and other scenes.

PRODUCT CHARACTERISTICS

- Full-color imaging cuts through darkness
 Based on AI ISP algorithm model, image signal characteristics and noise distribution are learned, scene noise and real signal are separated, and true color information of image signal is accurately restored.
- Large screen display is easier to use
 Far beyond the industry average 1.43-inch AMOLED display, maximum brightness 450nit, full color. It supports five levels of brightness adjustment to adapt to the application requirements of different environments at night.
- Low power consumption and long endurance
 Battery capacity of 3350mAh, use time up to 4-5 hours, based on low power algorithmic engine, has the advantages of faster speed, lower latency and longer battery life.
- No need to fill light hidden operation
 It can be used for full-color HD imaging in extremely low light scenes without additional loading of visible light or infrared light complement module. It can realize the work of the video screen, hidden recording, and help law enforcement operations at night.
- Compact and flexible
 The body is made of aluminum alloy, with a large capacity battery of about 550 grams, which can be held with one hand to reduce the pressure of long-term use and make it more comfortable to use. Installed on the bracket, can be fixed long-term use.
- Ultra remote imaging recording is true
 In the night environment, the 50mm focal length and F1.0 large aperture lens can shoot the target (with people as the reference) 350 meters away, and truly record the target action and color details.

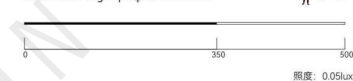


PRODUCT PARAMETER

Product name		Outdoor Full-color Night Vision Telescope (Portable)
Image sensor		1/1.2" ultra starlight CMOS
Product size		Length 180mm/ width 54mm/ height 62mm
weight		Net weight: about 550g
Maximum resolution		Two million, full color
Frame rate		5fps-30fps
aperture		1.0
Focal length		50mm
Focusing mode		manual
Operating temperature and humidity		-20°C~+60°C, humidity less than 95%(no condensation)
Day-night mode		automatic
Display screen		1.43" AMOLED
Screen color		466*466(RGB)
Battery capacity		3350mAh, double section in parallel
power		Max6.5 W
Protection class		IP55
endurance		Night vision mode: About 4 hours Daylight mode: about 5 hours
Power interface		TYPE-C
Power supply		9V/2.0A

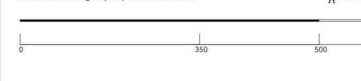
Visual distance at night: 5~350m

Observation target: people and vehicles



Daytime visual distance: 5~500m

Observation target: people and vehicles



The data comes from future experiments according to different luminance and target size, the full-color visual distance is different, the actual situation shall prevail. Unit: m

2-in-1 Tactical Light + Laser Sight



Description

The product is a tactical equipment that integrates tactical lighting and laser aiming functions. It can meet tactical lighting and fast laser aiming at night or in low-light environments during actual combat or training. Illumination and aiming functions are available at the same time, choose to use according to your needs.

Specification

Product Name	2-in-1 Tactical Light + Laser Sight
Base	MIL-STD-1913 Picatinny Rail
Laser wavelength	Red light 635nm
Laser power	<5mW
Working temperature	-20°C~+50°C
LED luminous flux	380 lumen
LED operating temperature	-40°C~+55°C
Work time	3-4 hours
Net weight	110g
Dimensions	80.36(L) x 36.58(W) x 48.50(H) /mm
Battery Type	CR123A (2 pcs, 3.7V rechargeable)

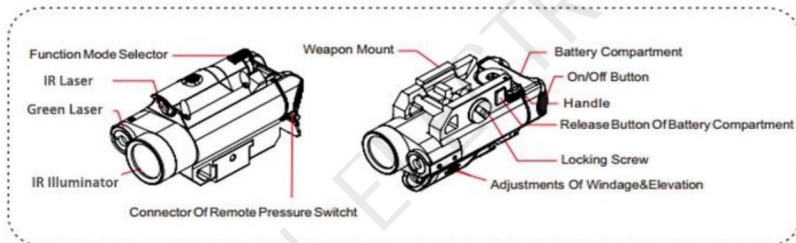
Detailed Pictures



Multi-functional green and infrared laser sight



Description



Main Spec

Main Spec	Visible Green Laser + IR Laser + IR Light			
LASER AIMER				
Laser Working Mode	Continuous			
Laser Eye Safety	Class 3R, for visible lasers; Class 3B, for IR laser.			
Laser Output Power	< 5mW, for visible lasers; 10-15mW, for Class 3B IR laser.			
Laser Wavelength Range	515-532nm, Green Laser; 830nm, IR Laser.			
Laser Beam Divergence (mrad)	1.3962mrad; (0.08°)			
Laser Spot Size @30 Meters	30-40mm, for Green Laser; 20-25mm, for IR Laser.			
LED White Illuminator				
IR Light Wavelength Range	860nm			
Working Mode	Continuous			
Battery Runtime	Green Laser	IR Laser	IR Light	Green Laser + IR Light
LS-FL3- G IR	≥20h	≥30h	2.1h	1.9h
MECHANICS				
Material	6061 Aircraft Grade Aluminum, battery compartment constructed from high strength Zytel(R) polymer.			
Finishing / Color	Hard anodizing, matt black.			
Dimensions	80 x 40 x 50mm L / W / H; (3.149 x 1.574 x 1.968 inch)			
NetWeight (without battery)	4.585 oz. ; (130g)			
Rail Type	MIL-STD-1913 Picatinny Rails.			
ELECTRONICS				
Supply Voltage	6.0 volts			
Battery Type	3.0 Volts CR123A Lithium Battery, 2pcs.			
Circuit Protecting	YES.			
ENVIRONMENTAL				
Laser Operating Temp. Range	-10°C to +60°C, for green laser; -20°C to +60°C, for red laser & IR laser.			
Storage Temp. Range	-40°C to +60°C.			
Water Proof	IPX4			
Shock & Gun Recoil Resistant	500G			
Shock & Impact Resistant	1.2 meter drop tests, in six directions.			
Adjustment Mechanism Of Laser Windage & Elevation				
Elevation Adjustment Range	±15 mrad; (±0.86°)			
Windage Adjustment Range	±15 mrad; (±0.86°)			
Laser Zeroed Distance	10 Meters.			

Helmet Tactical Flashlight



Description

The product Helmet Tactical Flashlight can be installed on the standard rail of the tactical helmet, which can freely change the lighting direction and is very stable. It can be quickly disassembled and assembled with one hand, and it is easy to operate. The light is 185 lumens, and it can work at a temperature of -20°C - 50°C, stable and reliable.

Detailed Pictures



Detailed Pictures

Product Name	Helmet Tactical Flashlight
Material	6061-T6 Aviation Aluminum
LED maximum luminous flux	185LM
LED operating temperature	-20°C - 50°C
Battery life	90min
Effective lighting distance	35m
Length	81mm
Light head size	21.2mm
Waterproof	IP66
Battery type	CR123 lithium battery 3V (1 pcs)

L7-IR Laser Designator



Description

L7-IR is a tactical equipment that infrared laser aiming functions. It can meet fast infrared laser aiming at night or in low-light environments during actual combat or training with night vision equipment. Professionally used for shooting or action instructions.

Product features

- Super waterproof effect, reaching IPX8;
- -20°C low temperature environment work normally;
- The edge of the bullet shell can be used for laser adjustment, convenient and quick
- Specially designed for rifles, it can be used in all equipment equipped with Picatinny rails.

Specification

Product Name	Laser Designator
Base	Picatinny Rail
Laser wavelength	808~860nm
Laser power	≥10mW
Working temperature	-20°C~+50°C
Work time	≥4.5 hours
Waterproof	IPX8
Material	Aviation aluminum 6061-T6
Net weight	128.4g
Dimensions	95(L) x 35(W) x 35(H) /mm
Battery Type	CR123A (1 pcs)

Detailed Pictures



Rifle Dual Laser Sight



Description

The product is a dual optical sight specially designed for rifles. According to operational requirements, it can achieve visible laser aiming and IR laser aiming at the same time, meeting the dual needs of concealed combat aiming and open target indication aiming. The laser direction adjustment can be done manually and directly with the knob, which is fast and convenient. The upper part of the product is equipped with a Picatinny rail to help the gun expand and install other tactical components.

Product features

- The laser direction adjustment can be manually operated directly on the knob, without tools, quickly and directly.
- The product is equipped with the international general standard Picatinny rail interface, which is suitable for a wide range of gun types and is easy to install and disassemble.
- The top of the product comes with a Picatinny rail for easy system expansion and installation.

Specification

Product Name	Rifle Dual Laser Sight
Material	6061-T6 Aviation Aluminum
Base	MIL-STD Picatinny Rail
Laser wavelength	Green laser 532nm IR laser 960nm
Laser power	Green laser <5mW IR laser <5mW
Working temperature	-20°C~+50°C
Work time	≥12 hours
Net weight	255g
Dimensions	97(L)*74(W)*48(H)/mm
Battery Type	CR123A 3V

Detailed Pictures



Tactical Light



Specification

Product name	Tactical Light
Base	Picatinny rail
Material	Aluminum alloy (6061-T6)
LED maximum output	225Lum
LED operating temperature	-30°C~+60°C
Continuous working time	5 h
Weight	108g
Length	85mm
Battery type	CR123 Lithium battery 3V (2 pcs)
Attachment	Rat-tail switch, Helmet holder, Rifle barrel clip, Battery, Instruction Manual, Wrench

Product Features

The product structure design is simple and easy to use, can be quickly disassembled and installed;

Fast and adjustable, can be quickly installed in picatinny guide rail;

High precision intelligent system, sensitive lighting, LED lamps with flash mode;

Aluminum alloy material, black polishing surface;

Products waterproof, shockproof, impact proof;

Installation Pictures



Pistol installation



Rifle installation

3X Magnifier



Product functions

- Ultrashort optical system, smaller size;
- Holographic aluminum alloy cutting, higher strength;
- Open locking mechanism, disassembly more convenient;
- With automatic locking adjustment mechanism, long-term shooting will not offset the field of view;

Detailed Pictures



Specification

Product Name	3X Magnifier	
Optical Properties	Magnification	3X
	Field of view	8°
	Parallax	1'
	Objective diameter	21.8mm
	Visual adjustment range	+2~-5D
	Exit pupil diameter	6.3mm
	Exit pupil distance	60mm
	adjustment range	±45MOA (elevation / azimuth)
Mechanical Parameters	Material	Aviation aluminum 7075
	Processing methods	CNC cutting
	Surface treatment	Black oxide
	Center height	38mm
	Base	Picatinny rail
	Dimensions	78.7 x 58.4 x 83.8 mm
	Weight	330g
Environment Parameters	Operating temperature	-40°C~+65°C
	Storage temperature	-45°C~+70°C
	Waterproof level	IP67

Laser Holographic Sight



Description

Laser holographic sight is newly designed as a light-duty and amplification-free optical sight with double-eye slewing function dedicated to close-in fight, which generally enables quick capture and slewing of target within 300m. Thanks to its prominent advantages of having large field and being easy to locate eyes, the laser holographic sight boats convenient sighting mode and quick sighting speed, thus serving as a preferred device for such military tasks as reconnaissance, anti-terrorist, anti-riot and peacekeeping, especially under complex surroundings, rough weather and close range, which greatly enhances individual combat capability. This product has a night vision low-light mode, which can be used with night vision devices.

This sight is applicable to firearms with such Picatinny and would-be Picatinny interfaces as may be used in other guns after proper modification or via bridging connection.

Specification

Product Name	Laser Holographic Sight
Base	Picatinny Rail
Magnification	1X
Field of view	16° x 10° (Eye point distance 10cm)
Parallax	≤±2'
Zero precision	≤±5' (Including re-installation)
Zero movement	≥±10mil
Battery Type	CR123A or CR123
Continuous working time	≥500h (Medium brightness)
Brightness level	Regulable (9 level day light, 3 level NV)
Low Battery Reminder	Yes
Continuous working time	≥240h
Night-vision mode	Yes
Dimension	80mm x 50mm x 60mm
Weight	≤220g

Detailed Pictures



Mini Red Dot Sight



Product functions

- This product does not need to remove the scope to replace the battery, avoid re-correcting the zero position;
- Customized icon LED light source, three aiming point of red dot, red circle and dot circle;
- The new point circle aiming target, aiming more accurately;
- Precise extinction pattern design, no stray light;
- Aviation aluminum alloy 7075, stainless steel full cutting, better stability, strong environmental adaptability;
- Hard black oxide surface treatment, no spraying, stronger durability;
- It has the function of actively querying the battery level, so as to grasp the battery level in real time.

Detailed Pictures



Specification

Product Name	Mini Red Dot Sight	
Optical Properties	Magnification	1X
	viewport size	22.8mm×16mm
	Aiming point	red dot / red circle / dot circle
	red dot size	≤2MOA
	Parallax	≤2MOA
Electrical Properties	Battery type	CR1632
	Continuous working time	≥ 10000 hours (medium brightness)
	Brightness level	9 levels daytime 2 levels night vision
	Power query	Active query
	Low battery alarm	Aiming point blinking
Mechanical Parameters	Material	Aviation aluminum 7075
	Processing methods	CNC cutting
	Surface treatment	Black oxide
	Click adjustment range	±30MOA (elevation / azimuth)
	Click adjustment accuracy	1MOA
	Base	Pistol base (Different pistol types need to be customized), Picatini base (Optional)
	Dimensions	50mm×35mm×30mm
Weight	50g (No included base)	
Environment Parameters	Operat temperature	-40℃~+65℃
	Storage temperature	-45℃~+70℃
	Waterproof level	IP67

Red Dot Sight



Product functions

- Side-mounted button battery, smaller size and lighter weight;
- Customized icon LED light source, three aiming point of red dot, red circle and dot circle;
- The new point circle aiming target, aiming more accurately;
- Precise extinction pattern design, no stray light;
- Aviation aluminum alloy 7075, stainless steel full cutting, better stability, strong environmental adaptability;
- Hard black oxide surface treatment, no spraying, stronger durability;
- The large effective display window makes aiming more convenient;
- It has the function of actively querying the battery level, so as to grasp the battery level in real time.

Detailed Pictures



Specification

Product Name	Red Dot Sight		
Optical Properties	Magnification	1X	
	viewport size	32mm×23mm	
	Aiming point	red dot / red circle / dot circle	
	red dot size	≤2M0A	
	Parallax	≤2M0A	
Electrical Properties	Battery type	CR2032	
	Continuous working time	≥10000 hours (medium brightness)	
	Brightness level	9 levels daytime 2 levels night vision	
	Power query	Active query	
	Low battery alarm	Aiming point blinking	
Mechanical Parameters	Material	Aviation aluminum 7075	
	Processing methods	CNC cutting	
	Surface treatment	Black oxide	
	Click adjustment range	±40M0A (elevation / azimuth)	
	Click adjustment accuracy	0.5M0A	
	Base	Picatinny rail	
	Aim baseline height	Type-L	28mm
		Type-H	38mm
	Dimensions	Type-L	80mm×40mm×50mm
		Type-II	80mm×40mm×60mm
Weight	Type-L	190g	
	Type-H	220g	
Environment Parameters	Operating temperature	-40℃~+65℃	
	Storage temperature	-45℃~+70℃	
	Waterproof level	IP67	

Rifle 1-6X Sight



Specification

Product Name	Rifle 1-6X Sight
Base	Picatinny Rail
Magnification	1-6X
Objective lens diameter	30mm
Eyepiece diameter	42mm
Exit pupil distance	6.4-13mm
Field of view	3.8-13
Shock resistance	800G
Weight (Includes protective cover)	450g
Length	265mm
Sight tube diameter	30mm
Adjustment value at 100yds	1/4 MOA

Product functions

- The product adopts "quick focus" technology to quickly identify the target and reticle.
- Red dot illumination, at the center of the reticle, the red dot has 1-11 grades of lighting.
- The reticle pattern is clear, which can be used for probabilistic ranging and battlefield observation.
- All optical components of the product are coated with anti-reflection coating, which greatly improves the transmittance of the system.
- The eyepiece and objective lens have a flip-up lens cover, which is convenient to protect the lens surface.
- Shock resistance can reach 1000G.

Detailed Pictures



Rifle 3X Sight



Specification

Product Name	Rifle 3X Sight
Base	Picatinny Rail
Magnification	3X
Adjustment range	± 30 MOA
Field of view at 100 yards	5.5°
Exit pupil diameter	6.2mm
Exit pupil distance	40mm
Oxyoptex adjustment range	-2.5 SD ~ +3 SD
1Click	0.45 MOA

Sniper Rifle 1.5-5X Sight



Specification

Product Name	Sniper Rifle 1.5-5X Sight
Base	Picatinny Rail
Magnification	1.5-5X
Caliber	32mm
Field of view	4.3-13
Exit pupil diameter	6.4-10mm
Exit pupil distance	72-80mm
Adjustment range	30'
Weight	336g
Length	210mm

Description

Sniper Rifle 3-9X Sight is suitable for all types of sniper rifles with Picatinny rails. All optical parts of the product are coated with anti-reflection coating, which greatly improves the light transmission rate of the system. The good design ensures that the product has the properties of anti-fog, waterproof, and shockproof. 1.5-5X continuous zoom, can accurately aim and shoot at targets within 250 meters, aim and shoot at targets within 400 meters, and roughly measure the range of targets within 800 meters.

Detailed Pictures



Sniper Rifle 1.5-5X Sight



Description

Sniper Rifle 3-9X Sight is suitable for all types of sniper rifles with Picatinny rails. Mainly used for aiming and shooting within 400 meters and observation of the battlefield. All optical components of the product are coated with anti-reflection coating, which greatly improves the transmittance of the system.

Specification

Product Name	Sniper Rifle 3-9X Sight
Base	Picatinny Rail
Magnification	3-9X
Caliber	40mm
Field of view	13.3-40.5
Exit pupil diameter	6mm
Exit pupil distance	2.6-2.9"
Weight	360g
Length	340mm
Environmental adaptability	Meet the requirements of American standards

Detailed Pictures



Sniper Rifle 4-16X Sight



Description

The Sniper Rifle 4-16X Sight is mainly used for aiming and shooting within 800 meters and observation of the battlefield. All optical components of the product are coated with anti-reflection coating, which greatly improves the transmittance of the system. The product is anti-vibration, filled with nitrogen, waterproof and anti-fog, with adjustable visibility, integrated tube.

Specification

Product Name	Sniper Rifle 4-16X Sight
Base	Picatinny Rail
Magnification	4-16X
Caliber	44mm
Exit pupil diameter	3"
Exit pupil distance	11-5.2mm
Adjustment range	±30'
Shock resistance	800G
Weight	652g
Length	14.4"
100 yards field of view	5.7-23.6
Debug 1Click distance movement at 100 meters	6.35mm

Detailed Pictures



Sniper Rifle 5-25X Sight



Description

The Sniper Rifle 5-25X Sight is mainly used for aiming and shooting within 1000 meters and observation of the battlefield. All optical components of the product are coated with anti-reflection coating, which greatly improves the transmittance of the system. The product is anti-vibration, filled with nitrogen, waterproof and anti-fog, with adjustable visibility, reticle illumination, integrated tube.

Product Features

- The product adopts "quick focus" technology to quickly identify the target and reticle.
- Fully reticle lines illumination, the reticle has 1-6 grades of lighting, and the 6 grades are switched on and off respectively, no need for cycle switches.
- The reticle pattern is clear and the digital marking is accurate, which can be used for probabilistic ranging and battlefield observation.
- All optical components of the product are coated with anti-reflection coating, which greatly improves the transmittance of the system.
- The objective lens is equipped with a honeycomb lens cover to ensure that it is not easily exposed in complex environments.

Specification

Product Name	Sniper Rifle 5-25X Sight
Base	Picatinny Rail
Magnification	5-25X
Objective lens diameter	55mm
Eyepiece diameter	35mm
Exit pupil distance	5.4-13mm
Adjustment range	±30'
Weight	730g
Length	380mm
Sight tube diameter	1.25"
Shock resistance	800G
Debug 1Click distance movement at 100 meters	6.25mm

Detailed Pictures



Tritium Scope



Specification

Product Name	Tritium Scope
Product Model	SL-T3X
Base	Picatinny Rail
Material	Aviation aluminum 7075
Magnification	3X
Field of view	7.6°
Exit pupil diameter	10mm
Exit pupil distance	40mm
Parallax	≤2'
Differentiation adjustment	±15mil
Click value	0.25mil±10%
Zero movement	≤0.5mil
Shock resistance	1000G
Dimension	151 x 60 x 80mm
Weight	350g

Description

The Tritium Scope has an adjustable reticle lighting function (optical fiber), and it also has the continuous brightness of the reticle in low light environment (tritium light). No electric dual lighting system: use optical fiber to brighten the reticle during the day, and use tritium light to brighten the reticle itself at night. It has the 3X magnification function and a quick aiming function for both eyes, suitable for a variety of combat environments such as alpine mountains, and its performance indicators and reliability have reached the world's advanced level.

The Tritium Scope is suitable for observing, aiming and shooting single or cluster targets within 600 meters under all-weather conditions such as daytime, early morning, and dusk. Can be assembled with all Picatinny rail equipment.

Detailed Pictures



壳聚糖止血材料

Chitosan Hemostatic Material

赛菲凝-纱布型



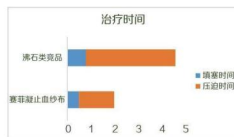
- ◎ 快速止血
- ◎ 防止严重外伤时出现的低温出血
- ◎ 无毒性，无致癌性，无免疫原性

赛菲凝纱布一止血纱 能阻止中重度及大动脉出血。

外伤出血是战场及多类事故现场的最常见伤情之一，出血失控导致伤员现场死亡的首要原因。在治疗战场上的重伤时，时间至关重要，第一时间让伤员得到有效救治可以增加伤员在紧急情况或敌对情况下的生存机会。

实验数据:

赛菲凝止血纱布进行的独立测试表明，与竞品纱布相比，该产品对由出血引起的致命伤害有效，并显著减少了失血。在减少治疗时间和失血的同时，模型显示赛菲凝快速止血纱布在运输过程中保持原位，未发生二次出血。



使用方法:

- 1、撕开包装取出纱布，用另一只手抓住纱布一端
- 2、从伤口处清除多余的血液；
- 3、直接将纱布填塞或缠绕在出血伤口处，多余的纱布可以撕掉；
- 4、直接按压伤口3分钟，如果仍然出血，继续按压3分钟；
- 5、包扎伤口以保持局部压力；
- 6、开袋后的剩余产品丢弃；

赛菲凝-针剂型



- ◎ 用于窄人口枪击、爆炸或刺伤
- ◎ 直接将 6g 给颗粒输送至出血口出血位置
- ◎ 促进血液快速凝结
- ◎ 促进血液在低温或肝素化条件下迅速凝结

爆炸或刀伤，很难治疗，往往是致命的！

赛菲凝止血材料 6g 颗粒型用于贯穿伤或者盲管伤，可快速直达伤口部位，快速控制出血

使用方法:

- 1、撕开包装；
- 2、将带有产品的针筒留置在包装袋内，将针筒尾端的后盖揭开，并将推送杆插入针筒内；
- 3、拔开针筒顶端的蓝帽
- 4、将针筒头部缓慢插入伤口深处；
- 5、缓慢推送产品的同时将针筒撤离伤口，根据伤口大小选择产品使用量；
- 6、用纱布覆盖伤口并按压5分钟；
- 7、按压5分钟后仍然出血可选择再次使用产品；
- 8、加压包扎并保持压力，并尽快转送医院并给医生出示产品包装

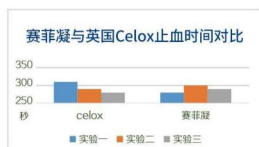


赛菲凝-颗粒型



- 快速凝集中重度出血
- 有效凝结核素化血液出血
- 不依赖正常凝血因子
- 不释放热量全身各部位均能使用

实验数据:



赛菲凝止血效果与英国Celox止血效果相当

使用方法:



1. 撕开赛菲凝包装
 2. 快速清除多余血液
 3. 立即将本品整袋倒在伤口上
 4. 按压伤口5分钟如仍然出血, 则继续按压5分钟
 5. 包扎伤口, 保持局部压力
6. 迅速寻找医疗机构处置伤口, 向医务人员出示本包装袋
7. 医务人员清理伤口前物理移除表面松动的赛菲凝颗粒及其凝胶物, 并保证充分移除本品