

60W IEEE 802.3af/at/bt Gigabit PoE Injector(Passive or Active optional)

This PoE injector is compliant with IEEE 802.3af and IEEE 802.3at IEEE802.3bt standard, with auto-detects PD equipment. Provide DC power to PoE devices, plug and play, easy for networking deployment and the output power consumption up to 60W. This POE can auto-start short-circuit function to cut off power supply when meet too high current or electricity interruption, to prevent equipment burnout and avoid networking failure caused by electricity interruption or installing error. This function make the POE can be widely applied to wireless network devices, bluetooth, IP Phone which compliant with IEEE802.3af/at/bt. Matched with Ethernet/ Power separator to change the current networking into source LAN, easy management, strengthen controlling and decrease the maintenance cost.



Key Feature

- Delivers power and data through one Ethernet cable for easy network extension.
- Compatible with IEEE 802.3af/at IEEE 802.3bt compliant powered devices.
- PoE Port Delivers power up to 100 meters.
- Plug and Play, no configuration required.

Product Features



Power over Ethernet

Support IEEE802.3af/at IEEE802.3bt standard, automatically detect and identify powered devices compliant with the standard and provide power supply, single-port power supply up to 60W.



Power Supply Distance Extension

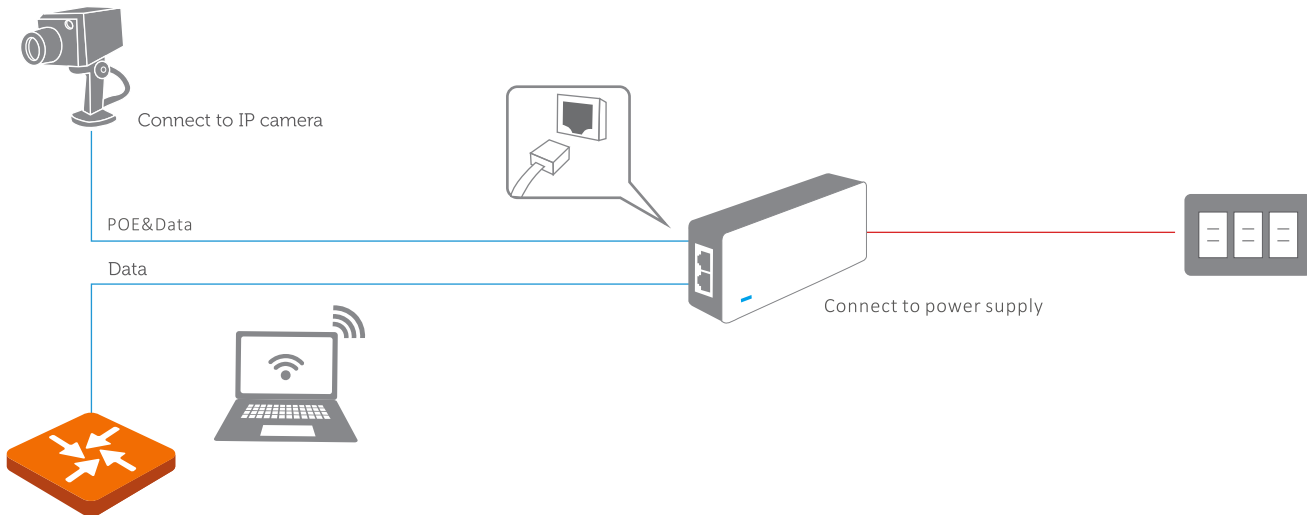
The power supply distance of standard CAT 5E and CAT 6E cable is up to 100m. It can supply power for the PD remotely, which expands the range of PoE applications, improves wiring efficiency, and better for project installation works.



Extreme Speed Transmission

10/100/1000Mbps/2.5G/5G bps self-adaptive RJ45 port, extreme speed and high efficient data transmission, support link-speed forwarding and MDI / MDIX auto-flip function, plug and play.

Application



Hardware Features	
AC INLET	C8 or C6 or C14 inlet optional
Standards&Protocols	IEEE802.3 IEEE802.3u IEEE802.3ab IEEE802.3af IEEE802.3at IEEE802.3bt POE++
Indicators	Green Led: POE Powered On Orange Led: PD device connected
Interfaces	1/10/100/1000M/2.5G/5G bps RJ45 Port(Data/PoE) <100M/1000M/2.5G/5G optional> 1/10/100/1000M/2.5G/5G bps RJ45 Port(Data)
Input Voltage	AC: 100~240V: 50/60Hz
Ouput Voltage	DC: 48-56V 1.2A(max)
Power consumption	Power supply: 60W max
PoE Supply	PoE Port supports standard IEEE802.3at/af IEEE802.3bt POE++ PoE power type is 4,5(+)/7,8(-) Midspan / 1,2(+),3,6(-) Endspan or 1245+ 3678- (optional)
Dimensions (W × D × H)	128mm*34mm*33mm
Environment	Operating Temperature: 0°C~40°C Storage Temperature: -40°C~70°C Operating Humidity: 10%~90% non-condensing Storage Humidity: 5%~90% non-condensing
Certification	FCC CE RoHS UL

Drawing

