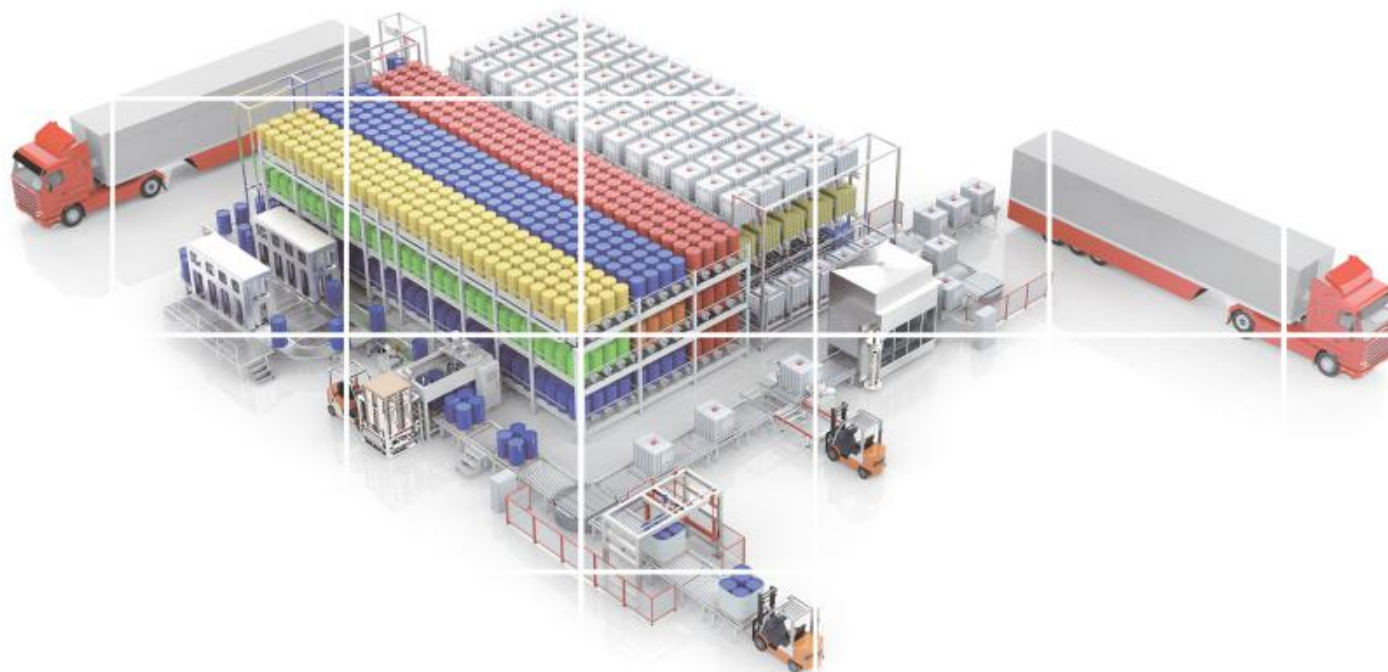


SOMTRUE

尚纯——让世界实现无误称重



江苏尚纯自动化技术有限公司

JIANGSU SOMTRUE AUTOMATION TECHNOLOGY CO., LTD

高端智能灌装系统提供商 HIGH-END INTELLIGENT FILLING SYSTEM PROVIDER



尚纯智能——为国家伟大复兴助力，为民族工业智能助能！

SOMTRUE INTELLIGENCE—HELPING THE GREAT REJUVENATION OF THE COUNTRY AND THE NATIONAL INDUSTRIAL INTELLIGENCE!

江苏尚纯自动化技术有限公司是一家集研发、生产、销售、服务于一体的智能化灌装设备领导型企业，拥有制造从 0.01g 到 200t 的称重装置所需的各种手段和测试设备；致力于国内外涂料、油漆、树脂、电解液、锂电、电子级化学品、色浆、固化剂、原料、医药中间体、医药化工等行业的工业数字称重自动化服务。已通过 ISO9001 质量管理体系认证，荣获国家高新技术企业。

尚纯一起步就与世界同步，公司依托大连理工大学、江苏理工大学合作成立的 2 个外部研发团队进行产品研发、技术更新及迭代，并与中科院常州智能机械研究所、常州机械电子工程研究所、常州工业学院等科研机构、院校广泛开展校企合作，在常州科教城成立“区级智能灌装工程技术研发中心”，在常州工业学院设立“智能灌装实训室”配合学院教学。

多年以来，公司秉承“守工业强国初心，担民族称重使命”精神，始终为社会提供可靠的产品和专业技术支持、健全的售后服务，不断的研发各类分桶机、灌装机、上盖压盖机、码垛机等产品及相关自动化设备，且均配备了完善的智能控制系统；我公司所设计制造的智能灌装产品已达十几个系列，上百个品种；在智能灌装秤、斗秤、智能立体库、配料系统等产品上拥有数十项国家专利。我们已确立了同行难以模仿的综合竞争优势。

尚纯智能将继续本着以“成就他人，对外成就用户，对内成就员工”的企业本质，扩大胸怀、完善自我；牢记“让世界实现无误称重”的使命，不断开发、创新与您携手同步前进，为中国自动化设备的发展做出应有的贡献！

尚纯智能 — 为国家伟大复兴助力，为民族工业智能助能！



ABOUT US

Jiangsu Somtrue Automation Technology Co., Ltd. is a leading enterprise of intelligent filling equipment integrating R&D, production, sales and service. It has various means and testing equipment required to manufacture weighing devices ranging from 0.01g to 200t; Committed to industrial digital weighing automation services for domestic and foreign coatings, paints, resins, electrolytes, lithium batteries, electronic chemicals, colorants, curing agents, raw materials, pharmaceutical intermediates, pharmaceutical chemicals and other industries. Has passed ISO9001 quality management system certification, won the national high-tech enterprise.

Somtrue - Synchronized with the world at the beginning, the company relies on 2 external R&D teams established in cooperation with Dalian University of Technology and Jiangsu University of Technology for product development, technology update and iteration, and cooperates with Changzhou Institute of Intelligent Machinery, Chinese Academy of Sciences, Changzhou Institute of Mechanical and Electronic Engineering, Changzhou Institute of Technology and other scientific research institutions and colleges have carried out extensive school-enterprise cooperation, established a "district-level intelligent filling engineering technology research and development center" in Changzhou Science and Education City, and set up a "smart filling training room" in Changzhou Institute of Technology to cooperate with the college teaching.

Over the years, the company has been adhering to the spirit of "keeping the original intention of strengthening the country by industry, and taking on the mission of national weighing", and has always provided the society with reliable products, professional technical support, and sound after-sales service. Products such as capping machines, palletizers and related automation equipment are equipped with a complete intelligent control system; the intelligent filling products designed and manufactured by our company have reached more than ten series and hundreds of varieties; There are dozens of national patents on products such as loading scales, bucket scales, intelligent three-dimensional warehouses, and batching systems. We have established a comprehensive competitive advantage that is difficult for our peers to imitate.

Somtrue Intelligence will continue to expand its mind and improve itself based on the corporate essence of "achieving others, external users, and internal employees"; keeping in mind the mission of "making the world achieve accurate weighing", continuous development and innovation will work with you Advance synchronously and make due contributions to the development of China's automation equipment!

企业荣誉

ENTERPRISE HONOR



我们的优势看得见

OUR ADVANTAGES

世界著名品牌的
OEM/ODM供应商

WORLD FAMOUS BRAND
OEM/ODM SUPPLIER

国家高新技术企业

NATIONAL HIGH-TECH ENTERPRISE

整体抛丸、静电喷涂
高温烤漆

OVERALL SHOT BLASTING,
ELECTROSTATIC SPRAYING
HIGH TEMPERATURE PAINT

拥有灌装包装
生产线国家专利

POSSESSES FILLING PACKAGING
NATIONAL PATENT OF PRODUCTION LINE

SOMTRUE

尚纯——让世界实现无误称重

电气部分选用
国内外一线品牌

ELECTRICAL PART SELECTION
FIRST-LINE BRANDS
AT HOME AND ABROAD

拥有27年全系列
衡器制造经验

HAS A FULL RANGE OF 27 YEARS
WEIGHING APPARATUS
MANUFACTURING EXPERIENCE

江苏省衡器行业
唯一的著名商标

WEIGHING APPARATUS INDUSTRY
IN JIANGSU PROVINCE
THE ONLY FAMOUS TRADEMARK

配置行业最新技术
传感器及仪表

CONFIGURE THE LATEST TECHNOLOGY
IN THE INDUSTRY
SENSORS AND INSTRUMENTS

机器人焊接，实现
清洁化、自动化生产

ROBOT WELDING, REALIZE
CLEAN AND AUTOMATED PRODUCTION

01 设备齐全 产能强大 / FULLY EQUIPPED AND POWERFUL

- 多年灌装设备行业经验，提供灌装设备整体解决方案
Years of experience in the filling equipment industry, providing overall solutions for filling equipment
- 20000m²的生产基地，百人生产团队
20000m² production base, 100 people production team
- 高精密设备上百台，快速满足设备定制要求
Hundreds of high-precision equipment, quickly meet equipment customization requirements

02 自有技术 重视研发 专利30+ / OWN TECHNOLOGY, ATTACH IMPORTANCE TO RESEARCH AND DEVELOPMENT, PATENT 30+

- 以高级工程师为核心的研发团队，专业灌装设备研发制造商
R&D team with senior engineers as the core, professional filling equipment R&D manufacturer
- 采用第三代灌装机技术，并与国外公司合作，确保研发成果的转化落地
Adopt the third-generation filling machine technology and cooperate with foreign companies to ensure the transformation of research and development results
- 荣获多项发明专利和实用新型专利，灌装机、灌装秤等多款产品被认定为高新技术产品
Won a number of invention patents and utility model patents, filling machines, filling scales and other products were identified as high-tech products

03 资质齐全 精选原材 质检合格 / COMPLETE QUALIFICATIONS, SELECTED RAW MATERIALS, QUALIFIED QUALITY INSPECTION

- 拥有灌装设备生产资质，产品通过了ISO9001、3C、CE等质量体系认证
Possess the production qualification of filling equipment, and the products have passed ISO9001, 3C, CE and other quality system certification
- 严格把控原材料及配件购进关、入库验收严格，从源头确保设备的优良品质
Strictly control the purchase of raw materials and accessories, and strict warehousing acceptance, to ensure the excellent quality of equipment from the source
- 检测设备齐全，生产过程规范，全程严格管控品质，设备全检合格出货
Complete testing equipment, standardized production process, strict quality control throughout the whole process, and qualified shipment of equipment

1. 全自动整线系列

1-10L方桶、圆桶全自动整线	01
1-10L square barrel, round barrel automatic whole line	
10-20L全自动包装流水线(单线直连)	02
10-20L automatic packaging line (single line direct connection)	
10-20L全自动包装流水线(双线并联)	03
10-20L automatic packaging line (two lines in parallel)	
200L全自动开灌旋灌装线(双工位)	04
200L automatic filling and filling line (double station)	
200L/IBC全自动灌装线+桶库	05
200L/IBC automatic filling line + barrel storage	
空桶库+灌装线+立体仓库	06
Empty barrel warehouse + filling line + three-dimensional warehouse	

2. 单机系列

1-10L双头半自动灌装机	07
1-10L double head semi-automatic filling machine	
1-10L全自动称重式灌装机	08
1-10L Automatic Weighing Filling Machine	
10-20L自动分桶机	09
10-20L automatic barrel divider	
20L半自动称重式灌装机	10~13
20L semi-automatic weighing filling machine	
20L自动称重式灌装机	14~16
20L Automatic Weighing Filling Machine	
20L自动上盖压盖机	17~18
20L automatic capping machine	
200L半自动灌装机	19
200L semi-automatic filling machine	
200L/IBC摇臂式灌装机	20
200L/IBC Rocker Arm Filling Machine	
200L自动灌装机	21
200L Automatic Filling Machine	
200L开灌旋一体机	22
200L open-fill-rotary machine	
200L/IBC全自动开灌旋一体机	23
200L/IBC automatic opening, filling and rotating machine	
在线检重秤及剔除	24
Online Checkweigher and Rejection	

自动转桶打印贴标机	25~26
Automatic drum printing and labeling machine	
自动开箱机	27
Automatic unpacking machine	
自动装箱机	28
Automatic case packer	
自动封箱机	29
Automatic case sealing machine	
自动供栈机	30
Automatic stacker	
自动移栽码垛机	31~32
Automatic transplanting palletizer	
机器人码垛机	33
Robotic palletizer	
在线圆盘式缠绕机	34
Online Disc Winding Machine	
在线悬臂式缠绕机	35
Online Cantilever Winding Machine	
自动水平捆扎机	36
Automatic horizontal strapping machine	
自动穿剑式捆扎机	37
Automatic sword-piercing strapping machine	
自清洁过滤器	38
Self-cleaning filter	
IBC吨桶全自动清洗线	39
IBC ton barrel automatic cleaning line	
200L桶全自动清洗线	40
200L barrel automatic cleaning line	
AGV无人运输车	41
AGV unmanned transport vehicle	
RGV穿梭车	42
RGV shuttle	
企业管理系统	43
Enterprise management system	
配套软件	44
Supporting software	
仓库管理系统(WMS)	45
Warehouse Management System	
设备控制系统(WCS)	46
Equipment Control System	



1-10L方桶、圆桶全自动整线

1-10L SQUARE BARREL, ROUND BARREL AUTOMATIC WHOLE LINE

组成部分：人工放桶(自动理桶机)、自动打印贴标机、全自动称重灌装机、自动上盖压盖机、自动开箱机、自动装箱机、自动封箱机、箱自动贴标机、自动供栈机、机器人码垛机组、在线圆盘式缠绕、整线控制系统

Manual barrel placement (automatic barrel sorting machine), automatic printing and labeling machine, automatic weighing and filling machine, automatic capping and capping machine, automatic unpacking machine, automatic packing machine, automatic sealing machine, automatic box labeling machine, automatic stacking machine, robot palletizing unit, online disc winding, whole line control system

参数信息

PARAMETER INFORMATION

灌装精度：±0.1%
 灌装容量：1-10L方桶、圆桶
 生产速度：600-1200桶/小时
 适用范围：各种乳胶漆、水漆、油漆等

Filling accuracy	±0.1%
Filling capacity	1-10L drum, square drum
Production capacity	600-1200 barrels/hour
Applicable materials	All kinds of latex paint, water paint, paint, etc.



10-20L全自动包装流水线（单线直连）

组成部分：人工上桶垛（桶垛提升机）、自动立式分桶机、自动转桶打印贴标机、全自动称重式灌装机、全自动送盖落盖压盖机、在线检重及剔除、转桶定位、自动供栈机、机器人码垛机组、自动水平捆扎机

参数信息

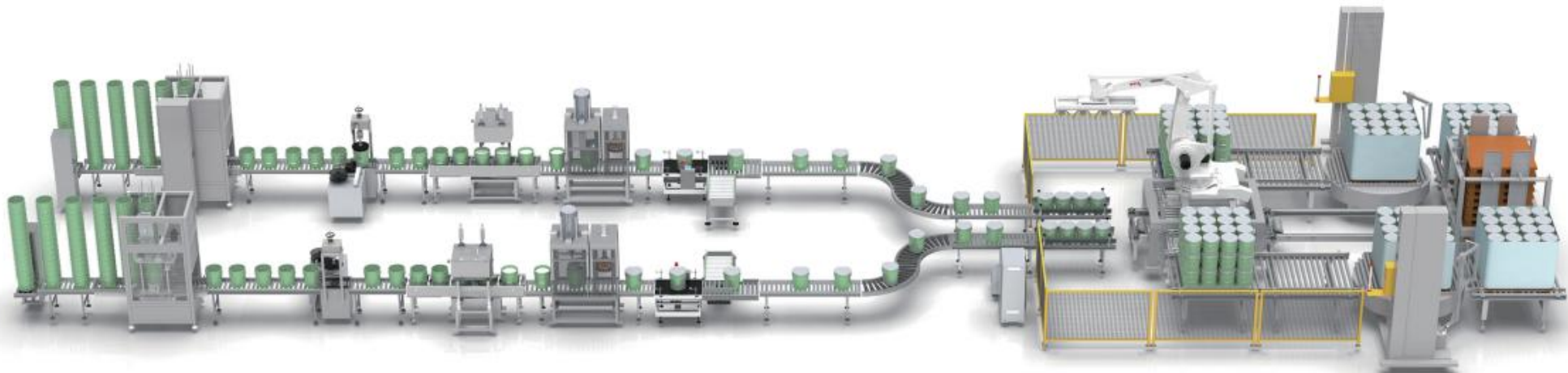
灌装精度：±0.1%
 灌装容量：10-20L
 灌装头数：2头/4头/6头
 生产速度：400-800桶/小时
 适用范围：各种乳胶漆、水漆、油漆等

10-20L AUTOMATIC PACKAGING LINE (SINGLE LINE DIRECT CONNECTION)

Manual barrel stacking (barrel stacking elevator), automatic vertical barrel separator, automatic barrel printing and labeling machine, automatic weighing filling machine, automatic cap feeding and capping machine, online checkweighing and rejection, drum positioning, automatic stacking machine, robot palletizing unit, automatic horizontal strapping machine

PARAMETER INFORMATION

Filling accuracy	±0.1%
Filling capacity	10-20L
Number of filling heads	2/4/6
Production capacity	400-800 barrels/hour
Applicable materials	All kinds of latex paint, water paint, paint, etc.



10-20L全自动包装流水线（双线并联）

10-20L AUTOMATIC PACKAGING LINE (TWO LINES IN PARALLEL)

组成部分：人工上桶垛（桶垛提升机）、自动立式分桶机、自动转桶打印贴标机、全自动称重式灌装机、全自动送盖落盖压盖机、在线检重及剔除、转桶定位、自动供栈机、机器人码垛机组、自动水平捆扎机

Manual barrel stacking (barrel stacking elevator), automatic vertical barrel separator, automatic barrel printing and labeling machine, automatic weighing filling machine, automatic cap feeding and capping machine, online checkweighing and rejection, drum positioning, automatic stacking machine, robot palletizing unit, automatic horizontal strapping machine

参数信息

灌装精度：±0.1%
 灌装容量：10-20L
 灌装头数：2头/4头/6头
 生产速度：800-1500桶/小时（双线）
 适用范围：各种乳胶漆、水漆、油漆等

PARAMETER INFORMATION

Filling accuracy	±0.1%
Filling capacity	10-20L
Number of filling heads	2/4/6
Production capacity	800-1500 barrels/hour (double line)
Applicable materials	All kinds of latex paint, water paint, paint, etc.



200L全自动开灌旋灌装线（双工位）

200L AUTOMATIC FILLING AND FILLING LINE (DOUBLE STATION)

组成部分：人工上桶、爬坡输送皮带、全自动开灌旋一体机、自动贴标机、自动防水盖上盖压盖机、自动转桶定位、自动供栈机、自动移栽码垛机

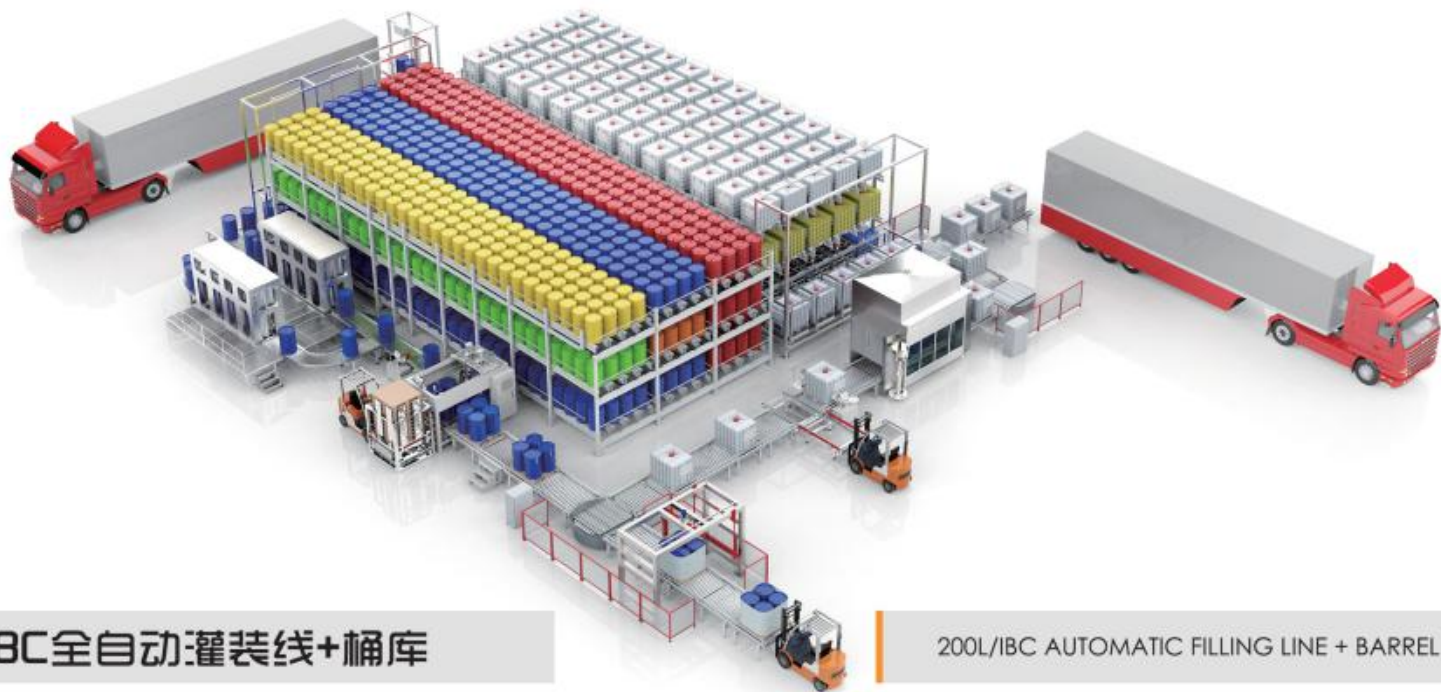
Manual barrel loading, climbing conveyor belt, automatic opening, filling and rotating machine, automatic labeling machine, automatic waterproof cover capping machine, automatic barrel positioning, automatic stacking machine, automatic transplanting and palletizing machine

参数信息

PARAMETER INFORMATION

灌装精度：±200g
 灌装容量：200L标准塑料桶、金属制桶
 生产能力：（三工位）30-40桶/小时
 （四工位）60-80桶/小时
 适用范围：各种乳胶漆、水漆、油漆等

Filling accuracy		±200g
Filling capacity		200L standard plastic drum, metal drum
Production capacity	Three station	30-40 barrels/hour
	Four station	60-80 barrels/hour
Applicable materials		All kinds of latex paint, water paint, paint, etc.



200L/IBC全自动灌装线+桶库

200L/IBC AUTOMATIC FILLING LINE + BARREL STORAGE

组成部分：来车卸桶、自动200L提升机、自动供栈机、200L移栽码垛机、200L(托盘式)/IBC桶库、全自动视觉定位/开灌旋一体机组、自动上防水盖、自动贴标机、在线自动缠绕膜机、叉车运转入库

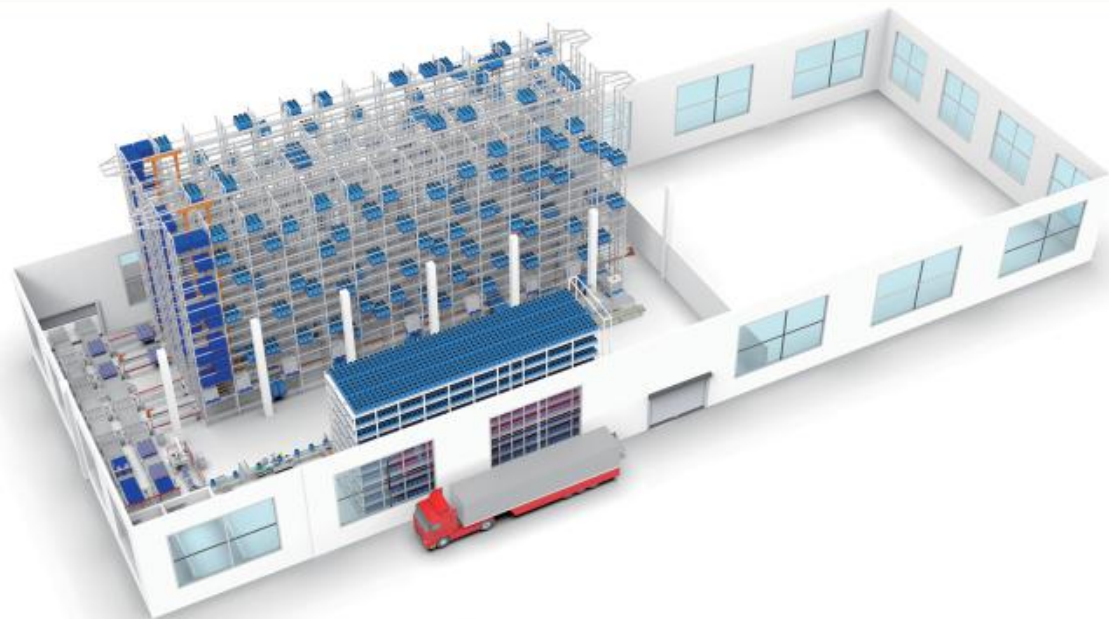
Truck unloading barrels, automatic 200L elevator, automatic stacking machine, 200L transplanting stacker, 200L (tray type)/IBC barrel storage, automatic visual positioning/opening, filling and rotating integrated unit, automatic waterproof cover, automatic paste Labeling machine, online automatic wrapping machine, forklift operation and storage

参数信息

PARAMETER INFORMATION

灌装精度：±400g
 灌装容量：(托盘式)200L、(IBC)1000L
 生产能力：(200L) 20-30桶/小时、(IBC) 6-10桶/小时
 桶库库位：(200L)108托、(IBC) 108托(根据实际情况定)
 适用范围：化工原料、中间料、硅油等

Filling accuracy	±400g
Filling capacity	(Tray type) 200L, (IBC) 1000L
Production capacity	(200L) 20-30 barrels/hour, (IBC) 6-10 barrels/hour
Bucket storage location	(200L) 108 Torr, (IBC) 108 Torr (depending on the actual situation)
Scope of application	Chemical raw materials, intermediate materials, silicone oil, etc.



空桶库+灌装线+立体仓库

EMPTY BARREL WAREHOUSE + FILLING LINE + THREE-DIMENSIONAL WAREHOUSE

组成部分：空包材存储系统、全自动灌装线、智能化立体仓库系统、双伸位堆垛机、ERP管理系统、WMS管理系统、WCS管理系统、双伸位堆垛机

Empty packaging material storage system, automatic filling line, intelligent three-dimensional warehouse system, double extension stacker, ERP management system, WMS management system, WCS management system, double extension stacker

参数信息

PARAMETER INFORMATION

空桶储存库：约6000空桶
成品立库货位：3400托（中桶、IBC/200L）
灌装能力：20L、200L、IBC
堆垛机：双伸位堆垛机、MIAS货叉

Empty bucket repository	About 6000 empty barrels
Finished product warehouse location	3400 torr (medium barrel, IBC/200L)
Filling capacity	20L、200L、IBC
Stacker	Double reach stacker, MIAS fork

1-10L 双头半自动灌装机

1-10L DOUBLE HEAD SEMI-AUTOMATIC FILLING MACHINE

设备概述

灌装头采用粗精两步灌装，保证灌装速度和精度。设计有接料盘，灌装结束后，接料盘伸出，防止灌装头滴落液体污染包装物和输送线体。系统灌装量可通过操作界面进行设定；可选净重/毛重灌装，并可设定皮重范围，并且具有皮重超差保护功能；重量误差追踪，自动修正功能，误差自动调整。灌装机各部分具备快速维修、快速切换以及快速安装。

Manual barrel stacking (barrel stacking elevator), automatic vertical barrel separator, automatic barrel printing and labeling machine, automatic weighing filling machine, automatic cap feeding and capping machine, online checkweighing and rejection, drum positioning, automatic stacking machine, robot palletizing unit, automatic horizontal strapping machine

主要技术参数

产品项目	技术参数	Product item	Technical parameter
外形尺寸(长*宽*高)mm	2000*1300*2000	Dimensions (L*W*H) mm	2000*1300*2000
灌装头数	2	Number of filling heads	2
灌装速度	4-6 桶/分钟	Filling speed	4-6 barrels/min
适用规格	1-10L 圆桶、方桶	Applicable Specifications	1-10L drum, square drum
灌装范围	0-15kg	Filling range	0-15kg
灌装精度	±0.1%F.S	Filling accuracy	±0.1%F.S
电源功率	220V/50Hz; 1KW	Mains power	220V/50Hz; 1KW
气源压力	0.6MPa	Air pressure	0.6MPa



1-10L 全自动称重式灌装机

1-10L AUTOMATIC WEIGHING FILLING MACHINE

设备概述

本设备灌装头灌装时分大小流量分时灌装，保证灌装速度和精度。灌装时桶口灌装；灌装结束后，接料盘伸出。设备具有手动、自动操作转换装置，可实现单桶灌装。该系统具有防腐蚀、防过载保护装置，传感器安装、拆卸和检修方便。具有桶数累计及重量累计功能，灌装完成后自动累计数据。设备与物料接触的部分采用不锈钢材质；灌装机各部分具备快速维修、快速切换以及快速安装。

The filling head of this equipment fills the filling time and the flow is time-sharing to ensure the filling speed and accuracy. When filling, the barrel mouth is filled; after filling, the receiving tray extends. The equipment has manual and automatic operation conversion device, which can realize single barrel filling. The system has anti-corrosion and anti-overload protection devices, and the sensor is easy to install, disassemble and repair. It has the functions of accumulating the number of barrels and accumulating weight, and automatically accumulates data after filling. The parts of the equipment in contact with the material are made of stainless steel; all parts of the filling machine have quick maintenance, quick switching and quick installation.

主要技术参数

产品项目	技术参数
外形尺寸(长*宽*高)mm	2200*1700*2300
灌装头数	4-6 头
灌装速度	600-1200 桶/小时 (5L计)
适用规格	1-10L 圆桶、方桶
灌装范围	0-15kg
灌装精度	±0.1%F.S
电源功率	220V/50Hz; 3KW
气源压力	0.6MPa

Product item	Technical parameter
Dimensions (L*W*H) mm	2200*1700*2300
Number of filling heads	4-6 heads
Filling speed	600-1200 barrels/hour (5L)
Applicable Specifications	1-10L drum, square drum
Filling range	0-15kg
Filling accuracy	±0.1%F.S
Mains power	220V/50Hz; 3KW
Air pressure	0.6MPa



10-20L 自动分桶机

10-20L AUTOMATIC BARREL DIVIDER

设备概述

将订购来的成摞的桶根据灌装需求一次分开并供给给灌装机使用。立式分桶，占地面积小，大大节省使用空间，底部抽桶精准速度快，自带双抬把手装置，避免分桶时挂桶而影响生产效率。

The ordered stacks of barrels are divided and supplied to the filling machine at one time according to filling needs. The vertical bucket divider has a small footprint, which greatly saves the use of space. The bottom bucket is accurate and fast, and it comes with a double lift handle device to avoid hanging buckets when dividing buckets and affecting production efficiency.

主要技术参数

产品项目	技术参数	Product item	Technical parameter
外形尺寸(长*宽*高)mm	2000*1300*2700	Dimensions (L*W*H) mm	2000*1300*2700
分桶速度	10-18 桶/分钟	Bucket speed	10-18 barrels/min
适用规格	18-25L 广口圆桶	Applicable Specifications	18-25L wide mouth drum
出桶成功率	≥99.7%	Bucket success rate	≥99.7%
电源功率	220V/50Hz; 1.5KW	Mains power	220V/50Hz; 1.5KW
气源压力	0.6MPa	Air pressure	0.6MPa



20L 半自动称重式灌装机

20L SEMI-AUTOMATIC WEIGHING FILLING MACHINE

设备概述

灌装头采用蝶阀分大小流量分时灌装，保证灌装速度和精度。灌装头配可移动接液盘，灌装时，针对不同的物料压力自动调整灌装速度。此外该系统具有防腐蚀、防过载保护装置。传感器为IP68防护，传感器安装、拆卸和检修方便。

The filling head adopts the butterfly valve to fill in time and time according to the flow rate to ensure the filling speed and accuracy. The filling head is equipped with a movable drip tray. When filling, the filling speed can be automatically adjusted according to different material pressures. In addition, the system has anti-corrosion and anti-overload protection devices. The sensor is IP68 protected, and the sensor is easy to install, disassemble and maintain.

主要技术参数

产品项目	技术参数	Product item	Technical parameter
外形尺寸(长*宽*高)mm	800*1300*1800	Dimensions (L*W*H) mm	800*1300*1800
灌装速度	2-3 桶/分钟	Filling speed	2-3 barrels/min
适用规格	10-25L 广口桶	Applicable Specifications	10-25L wide mouth drum
灌装范围	±10g	Filling range	±10g
电源功率	220V/50Hz: 0.5KW	Mains power	220V/50Hz: 0.5KW
气源压力	0.6MPa	Air pressure	0.6MPa



20L 半自动称重式灌装机

20L SEMI-AUTOMATIC WEIGHING FILLING MACHINE

设备概述

灌装主机采用粗精两步灌装，保证灌装速度和精度。灌装时下潜桶口内灌装，灌装结束后，接料盘伸出，防止液体污染包装物和输送线体。采用触摸屏人机对话，自动诊断功能，参数设定以及累计班产、工作状态显示等，自动去皮重、累计桶数、重量、显示灌装量、零点自动跟踪、落差自动修正、超欠量、运行异常报警功能，底部增加接料盘，具有排出管阀，存储物料可方便排出。

The filling host adopts two-step filling of coarse and fine to ensure filling speed and precision. When filling, it is filled in the mouth of the submersible barrel, and after the filling is completed, the receiving tray extends to prevent the liquid from contaminating the packaging and the conveying line. Adopt touch screen man-machine dialogue, automatic diagnosis function, parameter setting and cumulative shift production, working status display, etc., The abnormal operation alarm function, the bottom adds a material receiving tray, and has a discharge pipe valve, the stored materials can be easily discharged.

主要技术参数

产品项目	技术参数	Product item	Technical parameter
外形尺寸(长*宽*高)mm	1200*1300*1800	Dimensions (L*W*H) mm	1200*1300*1800
灌装速度	2-3 桶/分钟	Bucket speed	2-3 barrels/min
适用规格	10-25L 闭口桶	Applicable Specifications	10-25L closed barrel
灌装精度	±10g	Filling accuracy	±10g
电源功率	220V/50Hz: 1KW	Mains power	220V/50Hz: 1KW
气源压力	0.6MPa	Air pressure	0.6MPa



20L 半自动称重式灌装机

20L SEMI-AUTOMATIC WEIGHING FILLING MACHINE

设备概述

灌装头采用蝶阀分大小流量分时灌装，保证灌装速度和精度。灌装头配可移动接液盘，灌装时，针对不同的物料压力自动调整灌装速度。此外该系统具有防腐蚀、防过载保护装置。传感器为IP68防护，传感器安装、拆卸和检修方便。

The filling head adopts the butterfly valve to fill in time and time according to the flow rate to ensure the filling speed and accuracy. The filling head is equipped with a movable drip tray. When filling, the filling speed can be automatically adjusted according to different material pressures. In addition, the system has anti-corrosion and anti-overload protection devices. The sensor is IP68 protected, and the sensor is easy to install, disassemble and maintain.

主要技术参数

产品项目	技术参数	Product item	Technical parameter
外形尺寸(长*宽*高)mm	1500*1300*1800	Dimensions (L*W*H) mm	1500*1300*1800
灌装速度	4-6 桶/分钟	Filling speed	4-6 barrels/min
灌装物料	真石漆	Filling material	real stone paint
适用规格	18-33L 广口圆桶	Applicable Specifications	18-33L wide mouth drum
进料形式	自流	Feed form	artesian
灌装精度	±50g	Filling accuracy	±50g
电源功率	220V/50Hz; 0.5KW	Mains power	220V/50Hz; 0.5KW
气源压力	0.6MPa	Air pressure	0.6MPa



20L 半自动称重式灌装机

20L SEMI-AUTOMATIC WEIGHING FILLING MACHINE

设备概述

灌装主机采用粗精两步灌装，保证灌装速度和精度。灌装结束后，接料盘伸出，防止灌装头滴落液体污染包装物和输送线体。采用触摸屏实现人机对话，自动诊断功能，操作参数设定以及累计班产、工作状态显示等，自动去皮重、累计桶数、重量、显示灌装量、零点自动跟踪、落差自动修正、超欠量、运行异常报警功能，高抗干扰能力，工作可靠。

The filling host adopts two-step filling of coarse and fine to ensure filling speed and precision. After filling, the receiving tray extends to prevent the liquid from dripping from the filling head from contaminating the packaging and the conveying line. The touch screen is used to realize man-machine dialogue, automatic diagnosis function, operation parameter setting, cumulative shift production, working status display, etc. Shortage, abnormal operation alarm function, high anti-interference ability, reliable work.

主要技术参数

产品项目	技术参数	Product item	Technical parameter
外形尺寸(长*宽*高)mm	1500*1300*1800	Dimensions (L*W*H) mm	1500*1300*1800
灌装速度	6-10 桶/分钟	Bucket speed	6-10 barrels/min
适用规格	18-25L 广口圆桶	Applicable Specifications	18-25L wide mouth drum
灌装精度	±20g	Filling accuracy	±20g
电源功率	220V/50Hz; 1.5KW	Mains power	220V/50Hz; 1.5KW
气源压力	0.6MPa	Air pressure	0.6MPa



20L 自动称重式灌装机

20L AUTOMATIC WEIGHING FILLING MACHINE

设备概述

灌装主机采用粗精两步灌装，保证灌装速度和精度。灌装结束后，接料盘伸出，防止灌装头滴落液体污染包装物和输送线体。采用触摸屏实现人机对话，自动诊断功能，操作参数设定以及累计班产、工作状态显示等，自动去皮重、累计桶数、重量、显示灌装量、零点自动跟踪、落差自动修正、超欠量、运行异常报警功能，高抗干扰能力，工作可靠。

The filling host adopts two-step filling of coarse and fine to ensure filling speed and precision. After filling, the receiving tray extends to prevent the liquid from dripping from the filling head from contaminating the packaging and the conveying line. The touch screen is used to realize man-machine dialogue, automatic diagnosis function, operation parameter setting, cumulative shift production, working status display, etc. Shortage, abnormal operation alarm function, high anti-interference ability, reliable work.

主要技术参数

产品项目	技术参数	Product item	Technical parameter
外形尺寸(长*宽*高)mm	2200*1750*2800	Dimensions (L*W*H) mm	2200*1750*2800
灌装速度	400-1200 桶/小时	Filling speed	400-1200 barrels/hour
灌装头数	3 头/4 头/6 头/8 头	Number of filling heads	3/4/6/8
适用规格	18-25L 广口圆桶	Applicable Specifications	18-25L wide mouth drum
灌装精度	±0.1%	Filling accuracy	±0.1%
电源功率	380V/50Hz: 3.5KW	Mains power	380V/50Hz: 3.5KW
气源压力	0.6MPa	Air pressure	0.6MPa



20L 自动称重式灌装机

20L AUTOMATIC WEIGHING FILLING MACHINE

设备概述

本设备采用触摸屏人机对话，自动诊断功能，操作参数设定以及累计班产、工作状态显示等，具有自动去皮重、累计桶数、重量、随机显示灌装量、零点自动跟踪、落差自动修正、超欠量、运行异常报警功能，高抗干扰能力，工作可靠。灌装主机采用粗精两步灌装，保证灌装速度和精度。

This equipment adopts touch screen man-machine dialogue, automatic diagnosis function, operation parameter setting and cumulative shift production, working status display, etc. Correction, over and under, abnormal operation alarm function, high anti-interference ability, reliable work. The filling host adopts two-step filling of coarse and fine to ensure filling speed and precision.

主要技术参数

产品项目	技术参数	Product item	Technical parameter
外形尺寸(长*宽*高)mm	2400*1750*2800	Dimensions (L*W*H) mm	2400*1750*2800
灌装速度	300-800 桶/小时	Bucket speed	300-800 barrels/hour
灌装头数	3 头/4 头/6 头/8 头	Number of filling heads	3/4/6/8
适用规格	18-25L 偏口方桶	Applicable Specifications	18-25L partial mouth square barrel
灌装精度	±0.1%	Filling accuracy	±0.1%
电源功率	380V/50Hz; 3.5KW	Mains power	380V/50Hz; 3.5KW
气源压力	0.6MPa	Air pressure	0.6MPa



20L 自动称重式灌装机

20L AUTOMATIC WEIGHING FILLING MACHINE

设备概述

本设备采用触摸屏人机对话，自动诊断功能，操作参数设定以及累计班产、工作状态显示等，具有自动去皮重、累计桶数、重量、随机显示灌装量、零点自动跟踪、落差自动修正、超欠量、运行异常报警功能，高抗干扰能力，工作可靠。灌装主机采用粗精两步灌装，保证灌装速度和精度。

This equipment adopts touch screen man-machine dialogue, automatic diagnosis function, operation parameter setting and cumulative shift production, working status display, etc. Correction, over and under, abnormal operation alarm function, high anti-interference ability, reliable work. The filling host adopts two-step filling of coarse and fine to ensure filling speed and precision.

主要技术参数

产品项目	技术参数	Product item	Technical parameter
外形尺寸(长*宽*高)mm	1500*1300*1800	Dimensions (L*W*H) mm	1500*1300*1800
灌装速度	6-10 桶/分钟	Filling speed	6-10 barrels/min
适用规格	18-25L 方桶圆桶	Applicable Specifications	18-25L square barrel round barrel
灌装精度	±20g	Filling accuracy	±20g
电源功率	380V/50Hz; 3KW	Mains power	380V/50Hz; 3KW
气源压力	0.6MPa	Air pressure	0.6MPa



20L 自动上盖压盖机

20L AUTOMATIC CAPPING MACHINE

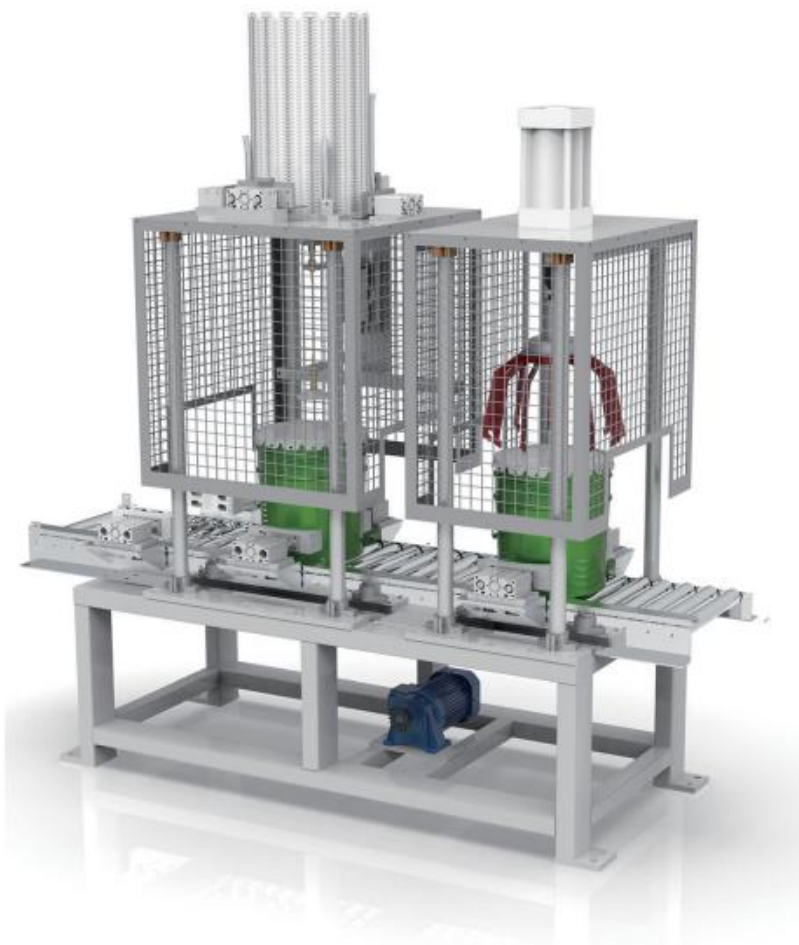
设备概述

自动落盖，落盖精准与桶口无偏差。自动压盖，压盖紧实，盖与桶身无间隙，成品倒置无溢出。速度匹配灌装机。料仓缺盖报警，放盖失败报警停机；压盖装置应可以调节以保证压紧度符合要求。

Automatically drop the cap, the cap drop is accurate and there is no deviation from the barrel mouth. Automatic capping, the capping is tight, there is no gap between the lid and the barrel body, and the finished product is inverted without overflowing. Speed matches the filling machine. The silo is alarmed for lack of cover, and the alarm is stopped when the cover fails; the capping device should be adjustable to ensure that the compaction meets the requirements.

主要技术参数

产品项目	技术参数	Product item	Technical parameter
外形尺寸(长*宽*高)mm	2000*1000*2000	Dimensions (L*W*H) mm	2000*1000*2000
灌装速度	10-15 桶/分钟	Bucket speed	10-15 barrels/min
适用规格	18-20L 花兰桶	Applicable Specifications	18-20L flower orchid barrel
灌装精度	99.9%	Filling accuracy	99.9%
电源功率	220V/50Hz; 1.5KW	Mains power	220V/50Hz; 1.5KW
气源压力	0.6MPa	Air pressure	0.6MPa



20L 自动上盖压盖机

20L AUTOMATIC CAPPING MACHINE

设备概述

自动落盖，落盖精准与桶口无偏差。自动压盖，压盖紧实，盖与桶身无间隙，成品倒置无溢出。速度匹配灌装机。料仓缺盖报警，放盖失败报警停机；压盖装置应可以调节以保证压紧度符合要求。盖垛自动供应，可缓存数垛，节省人工。

Automatically drop the cap, the cap drop is accurate and there is no deviation from the barrel mouth. Automatic capping, the capping is tight, there is no gap between the lid and the barrel body, and the finished product is inverted without overflowing. Speed matches the filling machine. The silo is alarmed for lack of cover, and the alarm is stopped when the cover fails; the capping device should be adjustable to ensure that the compaction meets the requirements. The cover stacks are automatically supplied, and several stacks can be buffered, saving labor.

主要技术参数

产品项目	技术参数	Product item	Technical parameter
外形尺寸(长*宽*高)mm	2000*1000*2000	Dimensions (L*W*H) mm	2000*1000*2000
灌装速度	10-15 桶/分钟	Filling speed	10-15 barrels/min
适用规格	18-20L 花兰桶	Applicable Specifications	18-20L flower orchid barrel
灌装精度	99.9%	Filling accuracy	99.9%
电源功率	220V/50Hz: 2.5KW	Mains power	220V/50Hz: 2.5KW
气源压力	0.6MPa	Air pressure	0.6MPa



200L 半自动灌装机

200L SEMI-AUTOMATIC FILLING MACHINE

设备概述

本机专门针对100-300kg的产品包装而设计，本机利用称重的工作原理来实现灌装量的控制。物料自行流入（或通过泵供料输送）待装容器中去。通过粗细双管路实现快慢灌装，灌装流量可调。在灌装初始时双管路同时打开，待灌装至快灌装设定量后，粗管路关闭，细管路继续慢灌装，直至设定的整体灌装量。

This machine is specially designed for 100-300kg product packaging. This machine uses the working principle of weighing to control the filling volume. The material flows itself (or is fed by a pump) into the container to be filled. Fast and slow filling is achieved through thick and thin double pipelines, and the filling flow is adjustable. At the beginning of filling, the two pipelines are opened at the same time. After filling to the set amount of fast filling, the thick pipeline is closed, and the thin pipeline continues to fill slowly until the set overall filling volume.

主要技术参数

产品项目	技术参数	Product item	Technical parameter
外形尺寸(长*宽*高)mm	800*1000*2000	Dimensions (L*W*H) mm	800*1000*2000
灌装速度	30-40 桶/小时	Bucket speed	30-40 barrels/hour
适用规格	200L 塑料桶/金属圆桶	Applicable Specifications	200L plastic drum/metal drum
紧盖方式	手持式旋盖	Tight cover	Hand-held screw cap
灌装精度	±0.1%	Filling accuracy	±0.1%
电源功率	220V/50Hz; 1KW	Mains power	220V/50Hz; 1KW
气源压力	0.6MPa	Air pressure	0.6MPa



200L/IBC 摇臂式灌装机

200L/IBC ROCKER ARM FILLING MACHINE

设备概述

本机专门针对100-1500kg的产品包装而设计。本机利用称重的工作原理来实现灌装量的控制。物料自行流入（或通过泵供料输送）待装容器中去。本机灌装部通过粗细双管路实现快灌装和慢灌装，且灌装流量可调。在灌装初始时双管路同时打开，待灌装至快灌装设定量后，粗管路关闭，细管路继续慢灌装，直至设定的整体灌装量。

This machine is specially designed for 100-1500kg product packaging. This machine uses the working principle of weighing to realize the control of the filling amount. The material flows itself (or is fed by a pump) into the container to be filled. The filling part of this machine realizes fast filling and slow filling through thick and thin double pipelines, and the filling flow is adjustable. At the beginning of filling, the two pipelines are opened at the same time. After filling to the set amount of fast filling, the thick pipeline is closed, and the thin pipeline continues to fill slowly until them set overall filling volume.

主要技术参数

产品项目	技术参数	Product item	Technical parameter
外形尺寸(长*宽*高)mm	1500*1900*3200	Dimensions (L*W*H) mm	1500*1900*3200
灌装速度	200L:30-40桶/小时 IBC:6-12桶/小时	Filling speed	200L: 30-40 barrels/hour IBC: 6-12 barrels/hour
适用规格	200L桶/IBC	Applicable Specifications	18-20L flower orchid barrel
灌装精度	±200g; ±400g	Filling accuracy	±200g; ±400g
电源功率	220V/50Hz; 1KW	Mains power	220V/50Hz; 1KW
气源压力	0.6MPa	Air pressure	0.6MPa



200L 自动灌装机

200L AUTOMATIC FILLING MACHINE

设备概述

本机专门针对100-300kg的产品包装而设计，本机利用称重的工作原理来实现灌装量的控制。物料自行流入（或通过泵供料输送）待装容器中去。通过粗细双管路实现快慢灌装，灌装流量可调。在灌装初始时双管路同时打开，待灌装至快灌装设定量后，粗管路关闭，细管路继续慢灌装，直至设定的整体灌装量。

This machine is specially designed for 100-300kg product packaging. This machine uses the working principle of weighing to control the filling volume. The material flows itself (or is fed by a pump) into the container to be filled. Fast and slow filling is achieved through thick and thin double pipelines, and the filling flow is adjustable. At the beginning of filling, the two pipelines are opened at the same time. After filling to the set amount of fast filling, the thick pipeline is closed, and the thin pipeline continues to fill slowly until the set overall filling volume.

主要技术参数

产品项目	技术参数	Product item	Technical parameter
外形尺寸(长*宽*高)mm	2080*1650*2200	Dimensions (L*W*H) mm	2080*1650*2200
灌装速度	80-100 桶/小时	Bucket speed	80-100 barrels/hour
适用规格	200L 塑料桶/金属圆桶	Applicable Specifications	200L plastic drum/metal drum
灌装精度	±0.1%	Filling accuracy	±0.1%
电源功率	380V/50Hz; 2.5KW	Mains power	380V/50Hz; 2.5KW
气源压力	0.6MPa	Air pressure	0.6MPa



200L 全自动开灌旋一体机

200L AUTOMATIC OPENING, FILLING AND ROTATING MACHINE

设备概述

本机专门针对50-300kg的液体桶包装而设计，设有可视窗，自动升降移门，自动完成进桶、移门开、关，自动识别桶口、自动开盖、自动灌装、自动旋螺盖并测漏、自动上防水盖（可选）、自动出桶。本机采用可编程控制器（PLC）进行控制，触摸屏操作。变频调速器，控制能力强，自动化程度高，采用特殊装置，无桶不灌装，对不准桶口不灌装等功能，使机器的机电一体化得到了完美的表现。

灌装头部：自动定位桶口灌装，装嘴下部有接液斗，防止物料滴漏。

开盖、旋盖部：不损盖、不伤盖、紧盖密封程度高。

测漏部：对旋紧盖后的桶口进行测漏，判断桶盖是否旋紧。不合格报警。

This machine is specially designed for 50-300kg liquid barrel packaging. It is equipped with a visual window, automatic lifting and sliding door, automatic barrel feeding, sliding door opening and closing, automatic identification of barrel opening, automatic lid opening, automatic filling and automatic rotation. Threaded cap and leak detection, automatic waterproof cap (optional), automatic out of the barrel. This machine adopts programmable logic controller (PLC) to control, touch screen operation. Frequency conversion governor, strong control ability, high degree of automation, using special devices, no filling without barrels, no filling if the barrel mouth is not correct, et c., so that the mechanical and electrical integration of the machine has been perfectly displayed.

Filling head: automatic positioning of the barrel mouth for filling, there is a liquid hopper at the lower part of the filling mouth to prevent material leakage.

Opening and screwing parts: no damage to the cover, no damage to the cover, and high sealing degree of the tight cover.

Leak test section: Leak test on the barrel mouth after the lid is tightened to determine whether the barrel lid is tightened. Unqualified alarm.

主要技术参数

产品项目	技术参数	Product item	Technical parameter
外形尺寸(长*宽*高)mm	3080*1650*2800	Dimensions (L*W*H) mm	3080*1650*2800
工位功能	开盖、灌装、旋盖、 捡漏、防水盖（可选）	Workstation function	Opening, filling, capping, leak detection, waterproof cover (optional)
灌装速度（三工位）	30-40 桶/小时	Filling speed (three stations)	30-40 barrels/hour
灌装速度（四工位）	60-80 桶/小时	Filling speed (four stations)	60-80 barrels/hour
适用规格	200L 塑料桶/金属圆桶	Applicable Specifications	200L plastic drum/metal drum
灌装精度	±0.1%	Filling accuracy	±0.1%
电源功率	380V/50Hz: 4.5KW	Mains power	380V/50Hz: 4.5KW
气源压力	0.6MPa	Air pressure	0.6MPa



200L/IBC 全自动开灌旋一体机

200L/IBC AUTOMATIC OPENING, FILLING AND ROTATING MACHINE

设备概述

本机专门针对200L（托盘式）/IBC共用的液体包装而设计的智能化包装系统。本设备采用视觉寻口，实现自动开盖、自动下潜快满速灌装、自动接漏、自动封螺纹盖等全流程自动化的包装。主机采用环保外框，可视窗，进出桶自动升降移门，灌装时可形成封闭空间。本机电气控制部分由PLC可编程控制器、称重模块、视觉系统等组成，控制能力强，自动化程度高。具备无桶不灌装，对不准桶口不灌装等功能，避免了物料的浪费和污染，使机器的机电一体化得到了完美的表现。

This machine is an intelligent packaging system specially designed for 200L (tray type)/IBC shared liquid packaging. This equipment adopts visual opening to realize automatic packaging of the whole process, such as automatic opening, automatic diving, fast filling, automatic leakage, and automatic screw cap sealing. The main machine adopts an environmentally friendly outer frame, a visual window, and an automatic lifting and sliding door in and out of the barrel, which can form a closed space during filling. The electrical control part of the machine is composed of PLC programmable controller, weighing module, vision system, etc., with strong control ability and high degree of automation. It has the functions of not filling if there is no barrel, not filling the barrel if the mouth is not correct, avoiding the waste and pollution of materials, and making the mechanical and electrical integration of the machine a perfect performance.

主要技术参数

产品项目	技术参数	Product item	Technical parameter
外形尺寸(长*宽*高)mm	4500*3000*3500	Dimensions (L*W*H) mm	4500*3000*3500
工位功能	开盖、灌装、旋盖、 捡漏、防水盖(可选)	Workstation function	Opening, filling, capping, leak detection, waterproof cover (optional)
200L桶(托盘式)	20-30 桶/小时	200L barrel (tray type)	20-30 barrels/hour
IBC	6-10 桶/小时	IBC	6-10 barrels/hour
适用规格	200L 塑料桶/金属圆桶; IBC	Applicable Specifications	200L plastic drum/metal drum; IBC
灌装精度	±0.1%F.S	Filling accuracy	±0.1%F.S
电源功率	380V/50Hz; 6.5KW	Mains power	380V/50Hz; 6.5KW
气源压力	0.6MPa	Air pressure	0.6MPa



在线检重秤及剔除

ONLINE CHECKWEIGHER AND REJECTION

设备概述

自动检重秤可以轻松的集成到现有生产线，对每一个产品进行检测，剔除不合格产品，确保产品100%合格。可实时存储数据，也可以通过串口将数据实时输出。剔除系统：如果检测出不合格产品，系统给出剔除信号，将不合格产品剔除至一边输送。

Checkweighers can be easily integrated into existing production lines to test each product, reject unqualified products, and ensure 100% qualified products. The data can be stored in real time, and the data can also be output in real time through the serial port. Rejection system: If unqualified products are detected, the system will give a rejection signal, and the unqualified products will be rejected to one side for transportation.

主要技术参数

产品项目	技术参数	Product item	Technical parameter
外形尺寸(长*宽*高)mm	2000*1500*900	Dimensions (L*W*H) mm	2000*1500*900
最大称重	30kg	Max weighing	30kg
精确度	±20g	Accuracy	±20g
分度值	5g,10g	Graduation value	5g,10g
防护等级	IP54	Protection class	IP54
传感器个数	1 个	Number of sensors	1
传输速度	15-60m/min	Transfer speed	15-60m/min
电源功率	220V/50Hz; 1KW	Mains power	220V/50Hz; 1KW
气源压力	0.6MPa	Air pressure	0.6MPa



自动转桶打印贴标机

AUTOMATIC DRUM PRINTING AND LABELING MACHINE

设备概述

根据贴标要求精准找准贴标区域，并完成自动标签打印、粘贴功能。解决了一般贴标不稳定的因素。该机标掌大小可选，多种尺寸的标掌满足更多系列的标签尺寸，为在标签尺寸或产品变化时使用带来更多的灵活拓展性。提前告知碳带耗尽，记录打印头的使用情况，推算维护时间，多国语言支持，输入系统设计开发，易于通信，且通信接口丰富，驱动方法传输数据。

Accurately locate the labeling area according to the labeling requirements, and complete the automatic label printing and pasting functions. Solved the unstable factors of general labeling. The size of the label palm of the machine is optional, and the label palm of various sizes can meet more series of label sizes, which brings more flexibility and expandability when the label size or product changes. Notify in advance that the ribbon is exhausted, record the usage of the print head, estimate the maintenance time, multi-language support, input system design and development, easy communication, and rich communication interfaces, driving methods to transmit data.

主要技术参数

产品项目	技术参数	Product item	Technical parameter
外形尺寸(长*宽*高)mm	3000*1250*1300	Dimensions (L*W*H) mm	3000*1250*1300
贴标速度	10-16 桶/分钟	Labeling speed	10-16 barrels/min
贴标精度	±1.0mm (视被贴物平整度而定)	Labeling accuracy	±1.0mm (depending on the flatness of the object to be attached)
适用纸卷内径	Φ75mm	Applicable paper roll inner diameter	Φ75mm
最大纸卷外径	Φ350mm	Maximum paper roll outer diameter	Φ350mm
适用标签尺寸	≤130*200mm (根据选择标掌大小)	Applicable label size	≤130*200mm (according to the selected palm size)
适用规格	1-5L 圆桶	Applicable Specifications	1-5L drum
电源功率	220V/50Hz; 2KW	Mains power	220V/50Hz; 2KW
气源压力	0.6MPa	Air pressure	0.6MPa



自动转桶打印贴标机

AUTOMATIC DRUM PRINTING AND LABELING MACHINE

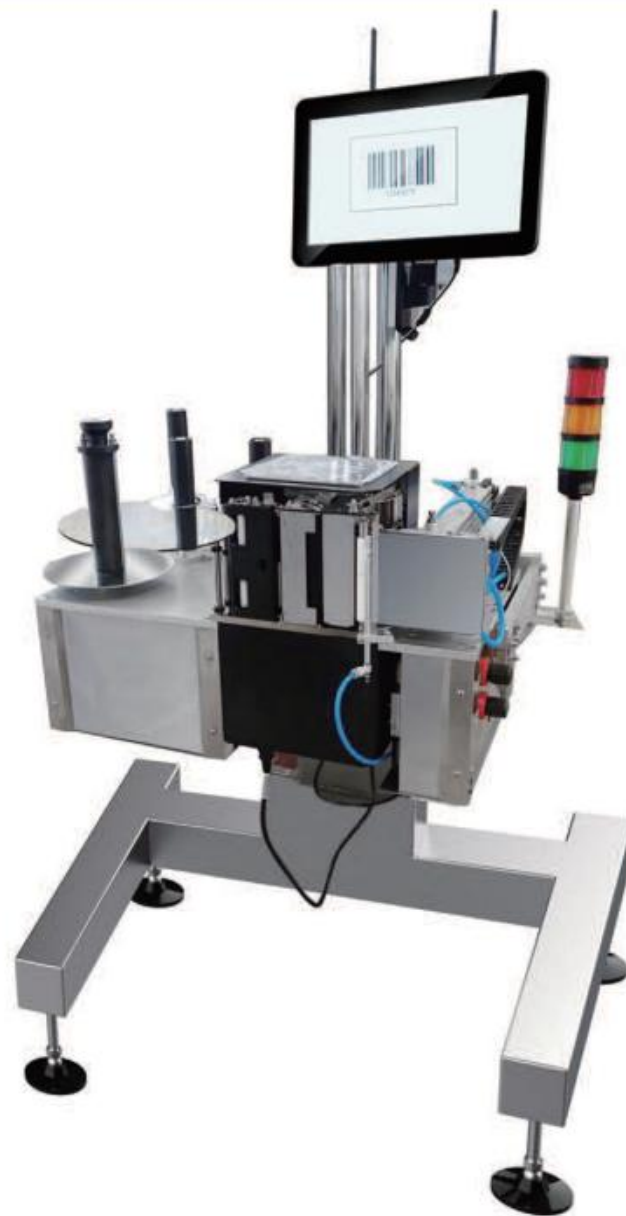
设备概述

根据贴标要求通过转桶装置、光电检测或视觉检测系统精准找准贴标区域，并完成自动标签打印、粘贴功能。该机标掌大小可选，多种尺寸的标掌满足更多系列的标签尺寸，为在标签尺寸或产品变化时使用带来更多的灵活拓展性。易于操作，提前告知碳带耗尽，记录打印头的使用情况，推算维护时间，多国语言支持，输入系统设计开发，易于通信，且通信接口丰富，驱动方法传输数据。

According to the labeling requirements, the labeling area can be accurately identified through the rotary barrel device, photoelectric detection or visual detection system, and the automatic label printing and pasting functions are completed. The size of the label palm of the machine is optional, and the label palm of various sizes can meet more series of label sizes, which brings more flexibility and expandability when the label size or product changes. Easy to operate, inform the ribbon in advance, record the usage of the print head, estimate the maintenance time, multi-language support, input system design and development, easy to communicate, and rich communication interfaces, drive method to transmit data.

主要技术参数

产品项目	技术参数	Product item	Technical parameter
外形尺寸(长*宽*高)mm	1200*950*1700	Dimensions (L*W*H) mm	1200*950*1700
出标速度	10-50 张/分钟	Bidding speed	10-50 sheets/minute
贴标精度	±2.0mm (视被贴物平整度而定)	Labeling accuracy	±2.0mm (depending on the flatness of the object to be attached)
适用纸卷内径	Φ75mm	Applicable paper roll inner diameter	Φ75mm
最大纸卷外径	Φ350mm	Maximum paper roll outer diameter	Φ350mm
适用标签尺寸	20-104mm~150x210 (根据选择标掌大小)	Applicable label size	20-104mm~150x210 (according to the selected palm size)
电源功率	220V/50Hz; 1.5KW	Mains power	220V/50Hz; 1.5KW
气源压力	0.6MPa	Air pressure	0.6MPa



自动开箱机

AUTOMATIC UNPACKING MACHINE

设备概述

本机是将叠成纸板的箱板自动打开，然后完成开箱、成形、折底盖，并完成底盖部分胶带粘贴，输送给装箱机的设备。本机采用PLC+显示屏控制，大大方便操作、管理、减少生产人员和劳动强度，是自动化规模生产必不可少的设备。操作方便，降低包装成本。



This machine is a device that automatically opens the box board stacked into cardboard, and then completes the unpacking, forming, folding bottom cover, and completes the tape sticking of the bottom cover, and conveys it to the packing machine. This machine is controlled by PLC + display screen, which greatly facilitates operation, management, and reduces production personnel and labor intensity. It is an essential equipment for automated large-scale production. Easy to operate and reduce packaging costs.

主要技术参数

产品项目	技术参数	Product item	Technical parameter
外形尺寸(长*宽*高)mm	2000×1900×1700	Dimensions (L*W*H) mm	2000×1900×1700
适用纸箱(长*宽*高)mm	200~500X150~400X100~450	Applicable carton (L*W*H)mm	200~500X150~400X100~450
生产能力	5-12 箱/分钟	Production capacity	5-12 boxes/min
开箱合格率	≥99.9%(纸箱合格前提下)	Unpacking pass rate	≥ 99.9% (On the premise that the carton is qualified)
适用胶带	60mm	Applicable tape	60mm
电源功率	220V/50Hz; 1KW	Mains power	220V/50Hz; 1KW
气源压力	0.6MPa	Air pressure	0.6MPa

自动装箱机

AUTOMATIC CASE PACKER

设备概述

本机是单独针对中低速流水线开发的装箱机，采用侧推整列技术，应用范围广、占地面积小、性能可靠、维护简便。适用于各种规格的桶装，瓶装产品自动装箱。可与生产线无缝连接，完成其后道包装生产线。本机按产品装箱数量的要求，能自动将产品整理排列且装进箱内，装满箱的产品可经过输送滚筒与最后码垛机无缝对接。此机可广泛应用于油品、汽车养护品、医药、食品、日化等行业。

This machine is a case packing machine developed separately for medium and low speed assembly lines. It adopts side-push arranging technology, which has a wide range of applications, small footprint, reliable performance and easy maintenance. It is suitable for automatic packing of barrels and bottled products of various specifications. It can be seamlessly connected with the production line to complete the subsequent packaging production line. According to the requirements of the number of products to be packed, the machine can automatically arrange the products and put them into the boxes. The products filled with the boxes can be seamlessly connected to the final palletizer through the conveying roller. This machine can be widely used in oil products, car maintenance products, medicine, food, daily chemicals and other industries.

主要技术参数

产品项目	技术参数	Product item	Technical parameter
外形尺寸(长*宽*高)mm	900×1500×1800	Dimensions (L*W*H) mm	900×1500×1800
适用纸箱(长*宽*高)mm	200~500X150~400X100~450	Applicable carton (L*W*H) mm	200~500X150~400X100~450
生产能力	4~8 箱/分钟	Production capacity	4~8 boxes/min
电源功率	220V/50Hz; 1KW	Mains power	220V/50Hz; 1KW
气源压力	0.6MPa	Air pressure	0.6MPa



自动封箱机

AUTOMATIC CASE SEALING MACHINE

设备概述

手动调节纸箱大小，适合同种规格纸箱同时段封箱；操作简单、使用方便、容易调整、封箱速度快、效率高、坚固耐用，可单机使用，也可与自动化后到包装流水线配套使用。可上下同时封箱，顶部自动折合，自动适时输送，后面出现堵箱情况时自动停机，无堵箱时自动启动，可以配套全自动生产线进行生产。

Manually adjust the size of the carton, suitable for the same size of carton sealing at the same time; simple operation, easy to use, easy to adjust, fast sealing speed, high efficiency, durable, can be used alone, can also be used in conjunction with the automatic packaging line. The box can be sealed up and down at the same time, the top is automatically folded, and it is automatically conveyed in a timely manner. It will automatically stop when the box is blocked at the back, and it will automatically start when there is no box blocking. It can be matched with a fully automatic production line for production.

主要技术参数

产品项目	技术参数	Product item	Technical parameter
外形尺寸(长*宽*高)mm	1750×850×1500	Dimensions (L*W*H) mm	1750×850×1500
适用纸箱(长*宽*高)mm	200~500X150~400X100~450	Applicable carton (L*W*H) mm	200~500X150~400X100~450
适用规格	15~20 箱/分钟	Production capacity	15~20 boxes/min
灌装精度	220V/50Hz; 1KW	Mains power	220V/50Hz; 1KW
电源功率	0.6MPa	Air pressure	0.6MPa



自动供栈机

AUTOMATIC STACKER

设备概述

该装置通过托盘仓两组气动装置协调动作，实现空托盘准确释放，通过链条和辊筒式输送机及时、准确、平稳地将空托盘送到码垛位置。托盘库可容10个以上托盘，当剩下空托盘不足时，系统发出要求补充托盘的信号直至自动停车，重托辊输送机（出垛机）前采用防撞钢板；托盘四周的挡板为可调节设计，适用于不同尺寸的托盘。

Through the coordinated action of two sets of pneumatic devices in the pallet bin, the device realizes the accurate release of empty pallets, and delivers the empty pallets to the stacking position in a timely, accurate and stable manner through chains and roller conveyors. The pallet warehouse can accommodate more than 10 pallets. When the remaining empty pallets are insufficient, the system sends a signal to replenish pallets until it stops automatically. The heavy idler conveyor (stacker) uses anti-collision steel plates; the baffles around the pallets are optional. Adjustable design, suitable for trays of different sizes.

主要技术参数

产品项目	技术参数	Product item	Technical parameter
外形尺寸(长*宽*高)mm	2400x1800x2200	Dimensions (L*W*H) mm	2400x1800x2200
栈板规格(长*宽*高)mm	1200X1200X150 (不同规格可调节)	Pallet size (L*W*H) mm	1200X1200X150 (different specifications can be adjusted)
生产能力	≤120 个/小时	Production capacity	≤120/hour
电源功率	380V/50Hz; 1KW	Mains power	380V/50Hz; 1KW
气源压力	0.6MPa	Air pressure	0.6MPa



自动移栽码垛机

AUTOMATIC TRANSFER PALLETIZER

设备概述

本机是专门针对中桶流水线后道码垛设计，系统机身轻巧，占地面积小，功能强大，能满足不同环境下的使用。采用伺服控制定位准确，抓取可靠不掉桶，可按要求的编组方式和层数，完成对桶装、箱体等各种产品的码垛，码垛全过程完全自动化，无须人工干预，能自动调整运转速度，与整条生产线同步运转。优化的设计使得垛型紧密、整齐、平移、升降平稳可靠。

This machine is specially designed for the back stacking of the middle bucket assembly line. The system is light in body, small in floor space and powerful in function, which can meet the use in different environments. Servo control is adopted for accurate positioning, reliable grasping and no barrels falling. It can complete the palletizing of various products such as barrels and boxes according to the required grouping method and number of layers. The whole process of palletizing is fully automated without manual intervention. Automatically adjust the running speed and run synchronously with the entire production line. The optimized design makes the stacking compact and neat, and the translation and lifting are stable and reliable.



主要技术参数

产品项目	技术参数	Product item	Technical parameter
外形尺寸 (长*宽*高) mm	2430×2560×3285	Dimensions (L*W*H) mm	2430×2560×3285
桶型规格	10-33L 方桶圆桶、箱体	Barrel Specifications	10-33L square barrel round barrel
栈板规格 (长*宽*高) mm	1200X1200X150 (不同规格可调节)	Pallet size (L*W*H) mm	1200X1200X150 (different specifications can be adjusted)
码垛层数	3 层 (行程范围内)	Palletizing layers	3 floors (within the itinerary)
码垛能力	约800 桶/小时	Palletizing capacity	About 800 barrels/hour
电源功率	380V/50Hz; 7KW	Mains power	380V/50Hz; 7KW
气源压力	0.6MPa	Air pressure	0.6MPa

自动移载码垛机

AUTOMATIC TRANSFER PALLETIZER

设备概述

本机是将200L桶按一定排列码放在托盘上，自动输出，便于运输至仓库存储的重要设备之一，它将单一的物料码放到一起，便于叉车运输，提高了生产效率。可极大地减少劳动人员和降低劳动强度，是现代工业社会发展的高科技产物，对提高生产率、降低成本有着重要意义。此系列码垛机相对于同类产品，效率高、灵活性大、适应能力强，是各大、中型生产车间的首选码垛设备。

This machine is one of the important equipments to put 200L barrels on the pallet in a certain arrangement and automatically output, which is convenient for transportation to the warehouse for storage. It can greatly reduce the number of laborers and reduce labor intensity. It is a high-tech product of the development of modern industrial society, and it is of great significance to improve productivity and reduce costs. Compared with similar products, this series of palletizers have high efficiency, great flexibility and strong adaptability. It is the preferred palletizing equipment for large and medium-sized production workshops.

主要技术参数

产品项目	技术参数	Product item	Technical parameter
外形尺寸(长*宽*高)mm	2470×3300×2700	Dimensions (L*W*H)mm	2470×3300×2700
桶型规格	200L 桶	Barrel Specifications	200L barrel
栈板规格(长*宽*高)mm	1200X1200X150 (不同规格可调节)	Pallet size (L*W*H)mm	1200X1200X150 (different specifications can be adjusted)
码垛层数	1 层	Palletizing layers	1 story
码垛能力	≤200 桶/小时	Palletizing capacity	≤200 barrels/hour
电源功率	380V/50Hz; 4.5KW	Mains power	380V/50Hz; 4.5KW
气源压力	0.6MPa	Air pressure	0.6MPa



机器人码垛机

ROBOTIC PALLETIZER

设备概述

机器人码垛系统主要针对高速包装流水线的后道码垛而设计，系统机身轻巧，占地面积小，功能强大，能满足不同环境下的使用。一套码垛系统即可单线使用，也可同时为2条包装线进行码垛，并且两条流水线即可生产同一种产品，也可以2条线生产不同的产品。更加节省了地方和费用，减少了后道包装的劳动强度，节省人力和生产成本。

The robot palletizing system is mainly designed for the back-end palletizing of high-speed packaging lines. The system is light in body, small in footprint and powerful in functions, which can be used in different environments. A set of palletizing system can be used in a single line, or palletizing for two packaging lines at the same time, and two lines can produce the same product, or two lines can produce different products. It saves more space and costs, reduces the labor intensity of subsequent packaging, and saves manpower and production costs.

主要技术参数

产品项目	技术参数	Product item	Technical parameter
码垛规格	纸箱、中桶	Palletizing Specifications	carton、medium barrel
栈板规格（长*宽*高）mm	1200X1200X150（不同规格可调节）	Pallet size (L*W*H) mm	1200X1200X150 (different specifications can be adjusted)
码垛层数	1-5层（行程范围内）	Palletizing layers	1-5 layers (within the itinerary)
抓取节拍	600次/小时	Grab the beat	600 times/hour
电源功率	380V/50Hz; 12KW	Mains power	380V/50Hz; 12KW
气源压力	0.6MPa	Air pressure	0.6MPa



在线圆盘式缠绕机

ROBOTIC PALLETIZING UNIT

设备概述

在线式缠绕包装机是适应流水线作业的包装机械。对提高包装效率、降低劳动强度、有效利用人力资源，起到非常积极的作用。应用PLC可编程控制，缠绕层数次数、越顶高度、加固层数可直接在面板上设置。只需按自动运行按钮，即可完成整个包装过程，自动手动随时转换。精选电器控制元件，可靠性高；光电开关，自动感测货物的高度。

Online winding packaging machine is a packaging machine suitable for assembly line operations. It plays a very positive role in improving packaging efficiency, reducing labor intensity and effectively utilizing human resources. Using PLC programmable control, the number of winding layers, the height of overtopping, and the number of reinforcement layers can be set directly on the panel. Just press the auto-run button to complete the whole packaging process, and it can be switched automatically and manually at any time. Selected electrical control components, high reliability; photoelectric switch, automatically sense the height of the goods.

主要技术参数

产品项目	技术参数	Product item	Technical parameter
外形尺寸(长*宽*高)mm	D:2000mm; H:2480mm	Dimensions(L*W*H)mm	D:2000mm; H:2480mm
最大包装物	L500-1200*W500-1200*H1800mm	Largest package	L500-1200*W500-1200*H1800mm
承重	2000kg	Load bearing	2000kg
栈板规格(长*宽*高)mm	1200X1200X150 (不同规格可调节)	Pallet size(L*W*H)mm	1200X1200X150 (different specifications can be adjusted)
转盘转速	0-12 转/分	Turntable speed	0-12 rpm
电源功率	380V/50Hz; 3KW	Mains power	380V/50Hz; 3KW
气源压力	0.6MPa	Air pressure	0.6MPa



在线悬臂式缠绕机

ONLINE CANTILEVER WINDING MACHINE

设备概述

全自动在线式旋臂缠绕机根据不同的产品和现场的实际要求，定制不同的包装系统，自动完成货物的感测、缠膜、对中、输送等全过程，输送机构采用滚筒、链条等方式。自动上断膜机构可实现无人化操作。设备由悬臂缠绕包装机、四角龙门支架、动力输送线、自动上断膜机构及控制系统组成。广泛应用于石化、食品、饮料、化工等行业。

The fully automatic online jib winding machine customizes different packaging systems according to different products and the actual requirements of the site, and automatically completes the whole process of sensing, wrapping, centering, and conveying the goods. The conveying mechanism adopts rollers, chains, etc. The automatic film breaking mechanism can realize unmanned operation. The equipment consists of a cantilever wrapping machine, a four-corner gantry bracket, a power conveying line, an automatic film-breaking mechanism and a control system. Widely used in petrochemical, food, beverage, chemical and other industries.

主要技术参数



产品项目	技术参数	Product item	Technical parameter
外形尺寸 (长*宽*高) mm	2270×3800×2700	Dimensions (L*W*H) mm	2270×3800×2700
断膜方式	缠绕机热熔断膜；覆顶膜刀片切断	Film breaking method	Winding machine thermal fuse film; top film blade cut off
适用膜厚	厚度50um、外径<Φ250mm、宽<1700mm、内芯>Φ76mm	Applicable film thickness	Thickness 50um, outer diameter<Φ250mm width<1700mm, inner core>Φ76mm
旋臂速度	3-18 转/分钟 (可调)	Arm speed	3-18 rpm (adjustable)
膜架类型	预拉伸比250%、张力可调	Membrane holder type	250% pre-stretch ratio, adjustable tension
载荷	2000kg (最大)	Load	2000kg (maximum)
电源功率	380V/50Hz; 3KW	Mains power	380V/50Hz; 3KW
气源压力	0.6MPa	Air pressure	0.6MPa

自动水平捆扎机

AUTOMATIC HORIZONTAL STRAPPING MACHINE

设备概述

全自动水平式打包机是对栈板上堆放的包装物进行水平打包的打包机，可有效防止包装物在移动及运输过程中散落和丢失。弓架和烫头部分可以上、下、前、后、移动，贴紧包装物后进行强力的打包。和全自动穿箭式打包机配套使用效果更佳，堆满产品的栈板通过输送滚筒线可实现无人化捆包生产线。可根据不同的产品和现场的实际要求，定制不同的包装系统，广泛应用于石化、食品、饮料、化工等行业。

The fully automatic horizontal baler is a baler that horizontally packs the packages stacked on the pallet, which can effectively prevent the packages from being scattered and lost during movement and transportation. The bow frame and the ironing head part can be moved up, down, front, back and back, and can be packed tightly after sticking to the package. It is better to use with the automatic arrow-piercing baler, and the pallets full of products can realize an unmanned baling production line through the conveying roller line. Different packaging systems can be customized according to different products and the actual requirements of the site, and are widely used in petrochemical, food, beverage, chemical and other industries.

主要技术参数

产品项目	技术参数	Product item	Technical parameter
外形尺寸 (长*宽*高) mm	可根据需要定制	Dimensions (L*W*H) mm	Can be customized as needed
包装效率	20~25 托/小时	Packaging efficiency	20~25 Torr/hour
打包速度	≤40 秒/道	Packing speed	≤40 seconds/track
捆扎形式	水平1~多道, 方式有点动、脚踏开关	Bundling form	Level 1 to multi-lane, the method is jog-foot switch
适用包带	厚(0.55~1.2)mm*宽(9~15)mm	Applicable straps	Thickness (0.55~1.2)mm*Width (9~15)mm
电源功率	380V/50Hz; 3KW	Mains power	380V/50Hz; 3KW
气源压力	0.4~0.6MPa	Air pressure	0.4~0.6MPa



自动穿剑式捆扎机

AUTOMATIC SWORD-PIERCING STRAPPING MACHINE

设备概述

全自动穿剑式捆扎机是针对栈板重物捆包而设计的机型，可使打包带自动穿过托盘环绕打包，工作效率高。穿剑式全自动打包机采用开放式弓架活动的穿带能将栈板与捆包物牢固地捆包在一起，便于移动及运输。堆满产品的栈板通过输送滚筒线可实现无人化捆包生产线。可根据不同的产品和现场的实际要求，定制不同的包装系统，广泛应用于石化、食品、饮料、化工等行业。

The automatic sword-piercing strapping machine is a model designed for the packaging of heavy objects on pallets. The piercing sword type automatic baler adopts the open bow frame movable piercing belt, which can firmly bundle the pallets and the bundles together, which is convenient for movement and transportation. The pallets full of products can be passed through the conveyor roller line to realize an unmanned bale production line. Different packaging systems can be customized according to different products and the actual requirements of the site, and are widely used in petrochemical, food, beverage, chemical and other industries.

主要技术参数

产品项目	技术参数	Product item	Technical parameter
外形尺寸 (长*宽*高) mm	可根据需要定	Dimensions (L*W*H) mm	Can be ordered as needed
包装效率	20~25 托/小时	Packaging efficiency	20~25 Torr/hour
打包速度	15~30 秒/道	Packing speed	15~30 seconds/track
捆扎形式	垂直1~多道无杆式穿剑; 方式有光电控制、手动等	Bundling form	Vertical 1 to multi-line poleless sword penetration, the methods include photoelectric control, manual, etc.
适用包带	厚 (0.55~1.2) mm*宽 (9~15) mm	Applicable straps	Thickness (0.55~1.2)mm*Width (9~15)mm
电源功率	380V/50Hz; 4KW	Mains power	380V/50Hz; 4KW
气源压力	0.6MPa	Air pressure	0.6MPa



自清洁过滤器

SELF-CLEANING FILTER

设备概述

本系统用于从储罐泵送物料至灌装机，采用气动隔膜泵+自清洁过滤器组合，动作由灌装机进行信号连锁控制。此系统包含了灌装机和储罐之间的连接管道。气动自清洗过滤器是一种利用滤网直接拦截液体中的杂质，漂浮物，颗粒物等，同时减少污垢，保障后道设备正常工作及使用寿命的精密设备，它具有可自动排污的特点。其最主要的优点是可自我操作、自我清洗，且清洗时不停止过滤，与传统的过滤器相比具有自动化程度高、压力损失小、不必进行人工清除滤渣等优点。

This system is used to pump materials from the storage tank to the filling machine. It adopts the combination of pneumatic diaphragm pump and self-cleaning filter, and the action is controlled by the signal chain of the filling machine. This system consists of connecting piping between the filling machine and the storage tank. Pneumatic self-cleaning filter is a kind of precision equipment that uses the filter screen to directly intercept impurities, floating objects, particles, etc. in the liquid, while reducing dirt and ensuring the normal operation and service life of the subsequent equipment. It has the characteristics of automatic sewage discharge. Its main advantage is that it can operate and clean itself, and does not stop filtering during cleaning. Compared with traditional filters, it has the advantages of high automation, small pressure loss, and no need to manually remove filter residues.

主要技术参数

产品项目	技术参数	Product item	Technical parameter
设计压力	0.6MPa	Design pressure	0.6MPa
壳体材质	304 不锈钢	Shell material	SUS304
滤芯材质	304 不锈钢	Filter material	SUS304
过滤精度	150μm (滤芯精度50~500 可选)	Filtration accuracy	150μm (50~500 Optional)
过滤面积	0.75m ²	Filter area	0.75m ²
进出口尺寸	DN80	Import and export size	DN80
排污口尺寸	DN50	Outlet size	DN50



IBC吨桶全自动清洗线

IBC TON BARREL AUTOMATIC CLEANING LINE

设备概述

独立设计，全自动化内外清洗消毒，操作简单，性能稳定，清洗效率高；每个桶清洗时间约2—5分钟，系统可选配5—500公斤压力清洗，解决各种工况的清洗问题；系统采用精密360°全覆盖高压三维清洗头，冲击力大耗液量低只需要1—2人工操作，全自动吨桶清洗线是利用自动化技术，实现人工叉车上下桶并采用流水线的工艺手段，实现自动清洗的功能。

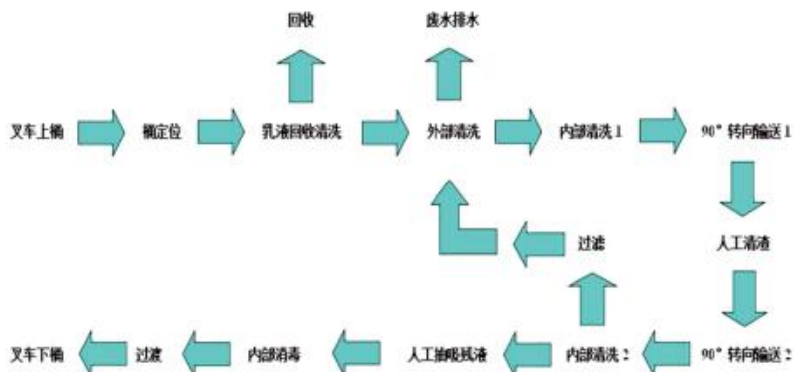
Independent design, fully automatic internal and external cleaning and disinfection, simple operation, stable performance, high cleaning efficiency; cleaning time for each bucket is about 2-5 minutes, the system can be equipped with 5-500 kg pressure cleaning to solve cleaning problems in various working conditions; The system adopts precise 360° full-coverage high-pressure three-dimensional cleaning head, which requires only 1-2 manual operations for large impact force and low liquid consumption. To achieve automatic clear function.

主要技术参数

产品项目	技术参数	Product item	Technical parameter
外形尺寸 (长*宽*高) mm	可根据需要定	Dimensions (L*W*H) mm	Can be ordered as needed
清洗速度	2-5分钟/桶	Cleaning speed	2-5 minutes/barrel
内洗泵供水能力	额定流量100L/min, 额定压力100kg	Internal wash pump water supply capacity	Rated flow 100L/min, rated pressure 100kg
外洗泵供水能力	额定流量30L/min, 额定压力150kg	Water supply capacity of external washing pump	Rated flow 30L/min, rated pressure 150kg
高压柱塞泵防护	防空转、防感压过载、防过热	High pressure plunger pump protection	Anti-idling, anti-pressure overload, anti-overheating
电源功率	380V/50Hz; 30KW	Mains power	380V/50Hz; 30KW
清洗压力	5-500kg	Cleaning pressure	5-500 kg



工艺流程图:



200L桶全自动清洗线

200L BARREL AUTOMATIC CLEANING LINE

设备概述

可根据客户的现场工况及物料设计工艺要求来定制节省人工操作，避免人工清洗造成的死角清洗不干净的情况。提供人工操作的安全性，无需人工手持高压清洗枪进行清洗，避免人工手持高压清洗枪操作带来的风险，清洗均为全自动化，可选择人工上下桶或者机械自动上下桶，清洗工序可根据工况要求更改（包括内外洗、烘干功能、自检功能等）。

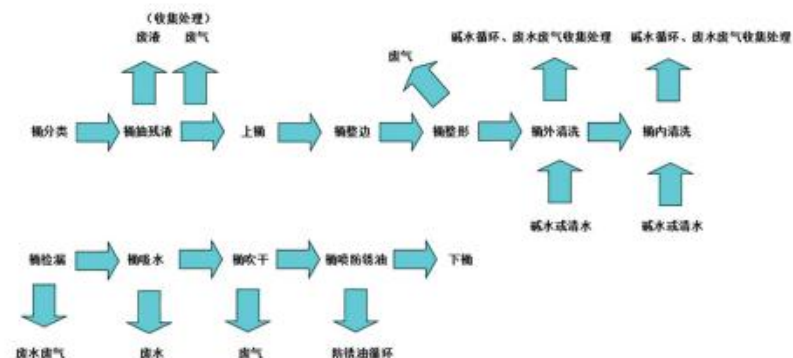
It can be customized according to the customer's on-site working conditions and material design process requirements to save manual operations and avoid the unclean dead corners caused by manual cleaning. Provides the safety of manual operation, no need to manually hold the high-pressure cleaning gun for cleaning, avoiding the risks caused by manual operation of the high-pressure cleaning gun. The cleaning is fully automated, and you can choose manual upper and lower barrels or mechanical automatic upper and lower barrels. The cleaning process can be based on The working conditions require changes (including internal and external washing, drying functions, self-checking functions, etc.).



主要技术参数

产品项目	技术参数	Product item	Technical parameter
供水能力	额定流量15-100L/min 额定压力3-300kg	Water supply capacity	Rated flow 15-100L/min, rated pressure 3-300kg
清洗速度	30秒-3分钟/桶	Cleaning speed	30 seconds-3 minutes/barrel
软管材质	耐高压500bar复合软管	Hose material	High pressure 500bar composite hose
高压柱塞泵防护	防空转、防憋压过载、防过热功能	High pressure plunger pump protection	Anti-idling, anti-pressure overload, anti-overheating functions
电源功率	380V/50Hz; 30KW	Main power	380V/50Hz; 30KW

工艺流程图：



AGV 无人运输车

AGV UNMANNED TRANSPORT VEHICLE

设备概述

装备有电磁或光学等自动导引装置运输车，能够沿规定的导引路径行驶，具有安全保护以及各种移载功能的运输车，属于轮式移动机器人的范畴。适用于狭窄空间的货物搬运，可以实现全向360度旋转运动；可以通过控制系统实现路径规划，集中调度；可以和WMS/WCS对接。基于激光定位技术，结合室内反射标贴进行车辆窄巷道外的定位及导航；可以集中调度上百台AGV智能路径规划和AGV调度，可以通过远程进行系统维护。

A transport vehicle equipped with automatic guidance devices such as electromagnetic or optical, which can travel along a prescribed guide path, has safety protection and various transfer functions, and belongs to the category of wheeled mobile robots. It is suitable for cargo handling in narrow spaces, and can realize omnidirectional 360-degree rotation; it can realize path planning and centralized scheduling through the control system; it can be connected with WMS/WCS. Based on laser positioning technology, combined with indoor reflective stickers for positioning and navigation outside the narrow lanes of vehicles; hundreds of AGV intelligent path planning and AGV scheduling can be centrally dispatched, and system maintenance can be performed remotely.

主要技术参数

产品项目	技术参数	Product item	Technical parameter
车型种类	托盘堆高类AGV	Model type	Pallet stacking AGV
导航方式	激光定位+激光侧位导航	Navigation	Laser positioning + Laser lateral navigation
运行模式	手动/自动自由切换	Operating mode	Manual/automatic free switching
负载能力	500-1000kg	Load capacity	500-1000kg
额定速度	10-60m/min	Rated speed	10-60m/min
蓄电池	铅酸电池	Battery	Lead-acid batteries
驱动方式	舵轮驱动	Drive mode	Steering wheel drive
报警形式	声光报警	Alarm form	Audible alarm



RGV 穿梭车

RGV SHUTTLE

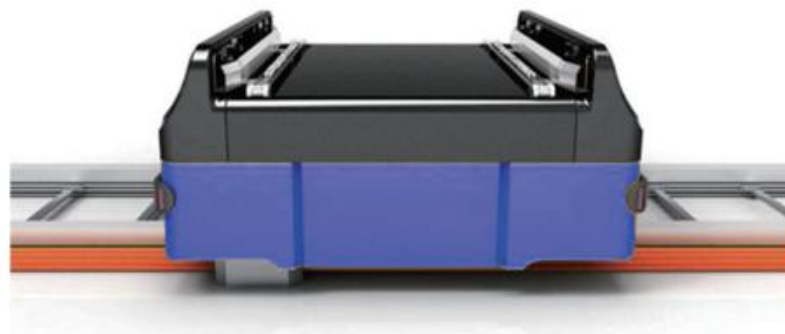
设备概述

用于各类高密度储存方式的仓库，轨道可设计任意长，可提高整个仓库储存量，并且在操作时无需叉车驶入巷道，安全性更高，有效提高仓库的运行效率。适合运送轻重型工件，因导轨固定，行走平稳，停车位置准确；控制系统简单、可靠性好、制造成本低、便于推广应用，可以和MMS/WCS对接。分为手动和自动两种模式，根据不同的物流规模和频度，系统可以选用多台RGV同时作业以满足实际要求。物流路径和工作方式变更，只要重新设定控制系统有关参数就可以实现。

For warehouses with various high-density storage methods, the track can be designed to be arbitrarily long, which can increase the storage capacity of the entire warehouse, and there is no need for forklifts to drive into the roadway during operation, which is safer and effectively improves the operating efficiency of the warehouse. It is suitable for transporting light and heavy workpieces, because the guide rail is fixed, the running is stable, and the parking position is accurate; the control system is simple, the reliability is good, the manufacturing cost is low, and it is easy to popularize and apply, and it can be docked with MMS/WCS. It is divided into two modes: manual and automatic. According to different logistics scale and frequency, the system can select multiple RGVs to operate at the same time to meet the actual requirements. Changes in logistics routes and working methods can be realized by resetting the relevant parameters of the control system.

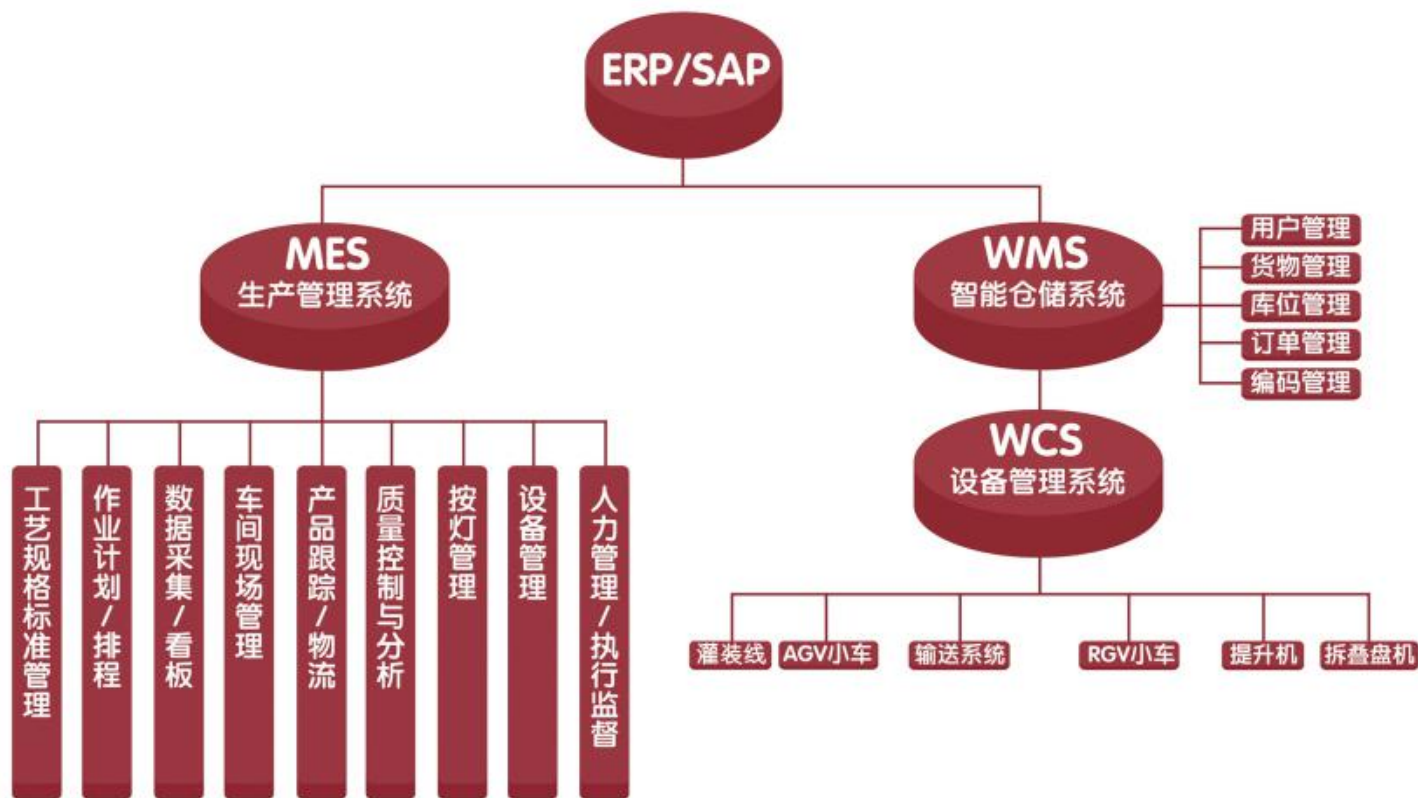
主要技术参数

产品项目	技术参数	Product item	Technical parameter
车型种类	双轨轻型RGV	Model type	Double track light RGV
控制方式	变频	Way to control	Frequency conversion
控制模式	自动、半自动	Control mode	Automatic, semi-automatic
供电方式	安全滑触线	Power supply	Safety trolley line
减速模式	机械、电气减速	Deceleration mode	Mechanical and electrical deceleration
最大载荷	1000kg	Maximum load	1000kg
最大输送速度	30m/min	Maximum conveying speed	30m/min
输送定位精度	±5mm	Outlet size	±5mm



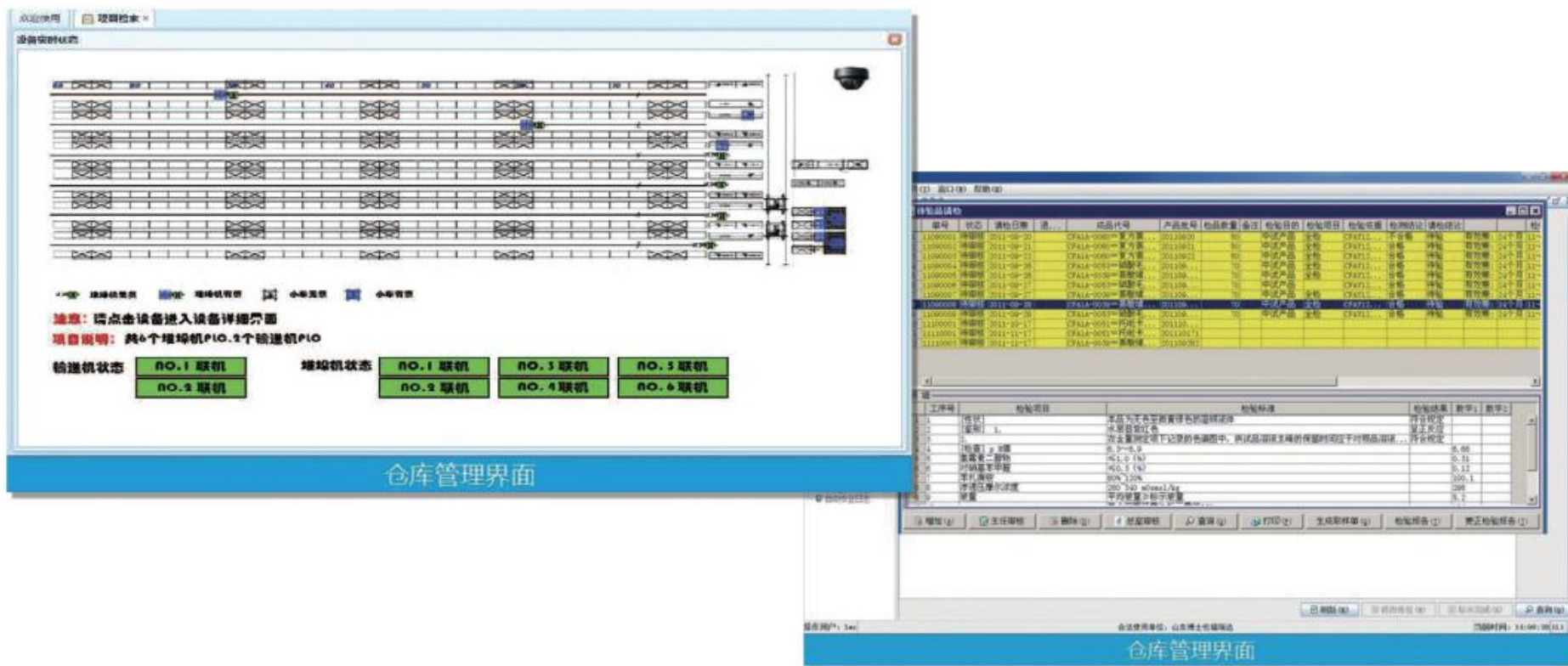
企业管理系统

ENTERPRISE MANAGEMENT SYSTEM



配套软件

SUPPORTING SOFTWARE



仓库管理系统 (WMS)

WAREHOUSE MANAGEMENT SYSTEM (WMS)

WMS通过RFID/条形码等信息识别技术实现货物和托盘与数据的绑定，有效控制跟踪物流动态，并与WCS等设备控制系统对接，实现仓库作业调度，构建全面、高效、智能的仓库管理平台。同时，WMS还可以与SAP、ERP、MES等多种软件对接，更好地提高企业管理深度和广度。

WMS realizes the binding of goods, pallets and data through information identification technologies such as RFID/barcode, effectively controls and tracks logistics dynamics, and connects with equipment control systems such as WCS to realize warehouse operation scheduling and build a comprehensive, efficient and intelligent warehouse management platform. At the same time, WMS can also be connected with SAP, ERP, MES and other software to better improve the depth and breadth of enterprise management.

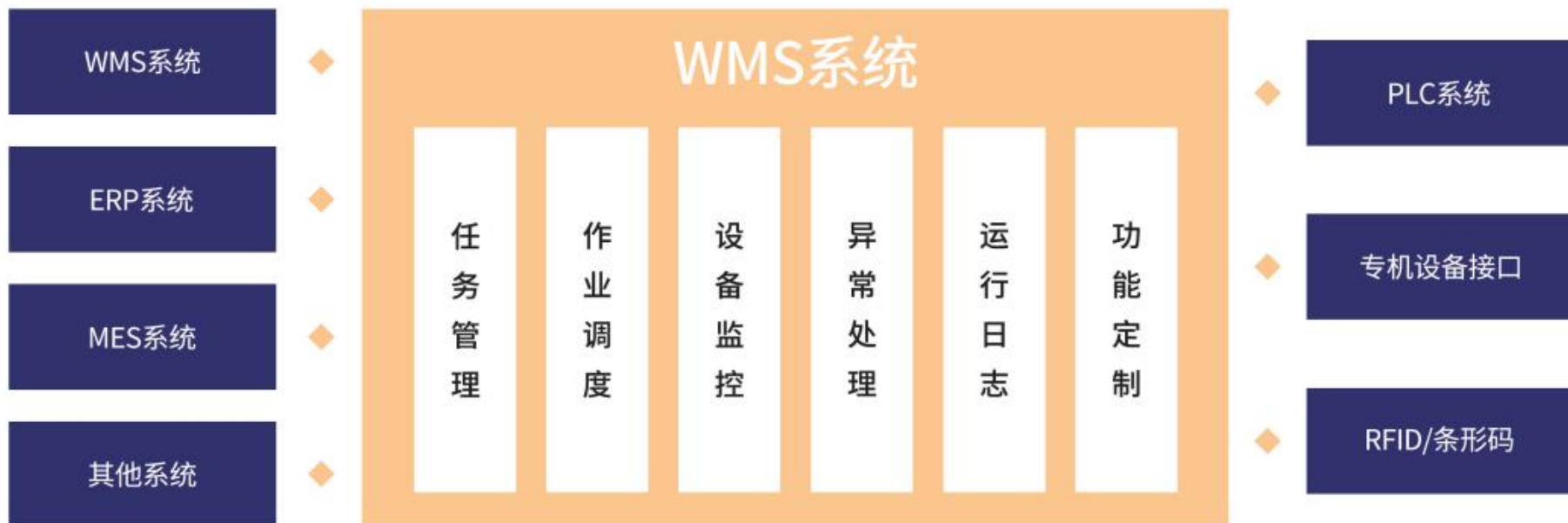


设备控制系统 (WCS)

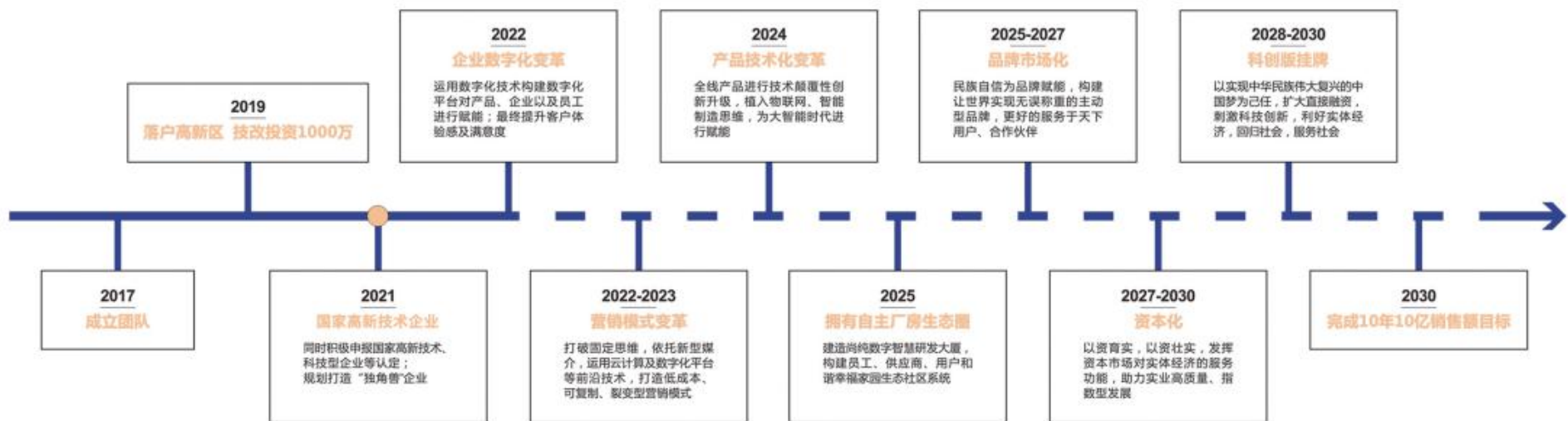
EQUIPMENT CONTROL SYSTEM (WCS)

仓库控制系统WCS (warehouse control system)介于WMS等上层信息管理系统和PLC等下层硬件执行系统之间。一方面接受管理系统指令，将其发送给PLC等硬件执行系统，从而驱动设备运转；另一方面将PLC系统的状态和数据实时反映在界面上，并提供PLC等硬件系统的手动调试接口。另外，WCS还提供对扫码器、AGV、称重仪等多种终端硬件的接入和管理。

The warehouse control system WCS (warehouse control system) is between the upper information management system such as WMS and the lower hardware execution system such as PLC. On the one hand, it accepts the management system command and sends it to the hardware execution system such as PLC, so as to drive the operation of the equipment; on the other hand, it reflects the status and data of the PLC system on the interface in real time, and provides a manual debugging interface for hardware systems such as PLC. In addition, WCS also provides access and management of various terminal hardware such as barcode scanners, AGVs, and weighing instruments.



我们的战略规划 STRATEGIC PLAN





使 命：让世界实现无误称重

价值观：（客户观）：快速行动 成就客户

（产品观）：精准高效 精益求精

（人才观）：正心 正言 正行

精 神：守工业强国初心，担民族称重使命

本 质：成就他人，对外成就用户，对内成就员工

愿 景：成为世界领先的高端智能称重系统提供商

守工业强国初心 担民族称重使命



江苏尚纯自动化技术有限公司

JIANGSU SOMTRUE AUTOMATION TECHNOLOGY CO., LTD

2022.04

☎ 电话: 0519-83863006 83863005 83863002

☎ 传真: 0519-83861006

🌐 网址: www.js-sch.com / www.cn-sch.com

✉ 邮箱: cn-sch@cn-sch.com

📍 地址: 江苏省常州市武进国家高新技术产业开发区创研港3A
(3A, Chuangyan Port, Wujin National High-tech Industrial Development Zone, Changzhou City, Jiangsu Province)

☎ 24小时免费服务热线: **400-8280-800**

— 版权归江苏尚纯自动化技术有限公司所有，未经许可不得翻印、修改或引用

扫一扫

