

2024 EDITION

LINGLONG TECHNICAL DATA

SPECIALTY TIRES



en.linglong.cn

 **LINGLONG TIRE**



SPECIALTY



TIRE

CONTENTS

	Page
INTRODUCTION	06
SPECIALTY TIRES GENERAL INFORMATION	08
1. Specialty Tire Size Marking	08
2. Specialty Tire Industrial Code	12
3. Mixing Of Bias And Radial Tires On A Vehicle	14
4. Specialty Tire Tread Compound	15
5. Load Index And Speed Symbol	16
6. Tread Depth And Air Pressure Conversion Data	18
7. Tire Size Equivalent Chart	19



	Page
Specialty TIRES TREAD PATTERN AND SIZE	20
1. Radial Off-the-road Tires Tread Pattern And Size	20
2. Bias Off-the-road Tires Tread Pattern And Size	40
3. Radial Agriculture Tires Tread Pattern And Size	58
4. Bias Agriculture Tires Tread Pattern And Size	70
5. Bias Industrial Tires Tread Pattern And Size	88
6. Bias Tires Tread Pattern And Size	94

PRODUCT CATALOG

LINGLONG OFF-THE-ROAD TIRE SIZE CHART

LOADER	Page
LR400	22
LB01N	22
LB06S	23
LB02SD	23
LSN201	24
LB03SD	24
LL25	42
LL25 E-3/L-3	43
LL306	43
LL306+	44
L301	44
LL136	45
LL26	45
E-3/L-3	46
LL55	46
L302	46

GRADER	
GRADER MASTER	25
LXS MASTER	26
LB01N	26
LSN201	26
G-2	47
LL25	47
LG201	48
E-2/L-2	48

RIGID DUMP TRUCKS	
LDO993	27
LDO993+	28
DM668	28
DM669	29
LXD988	29
LXD998	30
DM668+	30
LB02S	31

MIX TRACTION	31
LL25	56
LL56(CR)	57
LL26	57

ADT/SCRAPER	
LB01N	32
LMS401	33

CRANE/TRANSPORT	
CRANE MASTER	34

SAND SERVICE	
LXF MASTER	35
LD701	53

UNDERGROUND VEHICLE	
LHD MASTER	36
LHD PREMIUM(Radial)	37

TM401	49
LL42	49
LHD PREMIUM(Bias)	50
LSM401	50
LSM402	51
LSM502	51

HEAVY TRUCK	
LXF PREMIUM	38
D990	39

INDUSTRIAL AND PORT	
LP401	52
LP402	52

ROLLER	
LC101	54
LL66	55
LL308	55

LINGLONG AGRICULTURE TIRE SIZE CHART

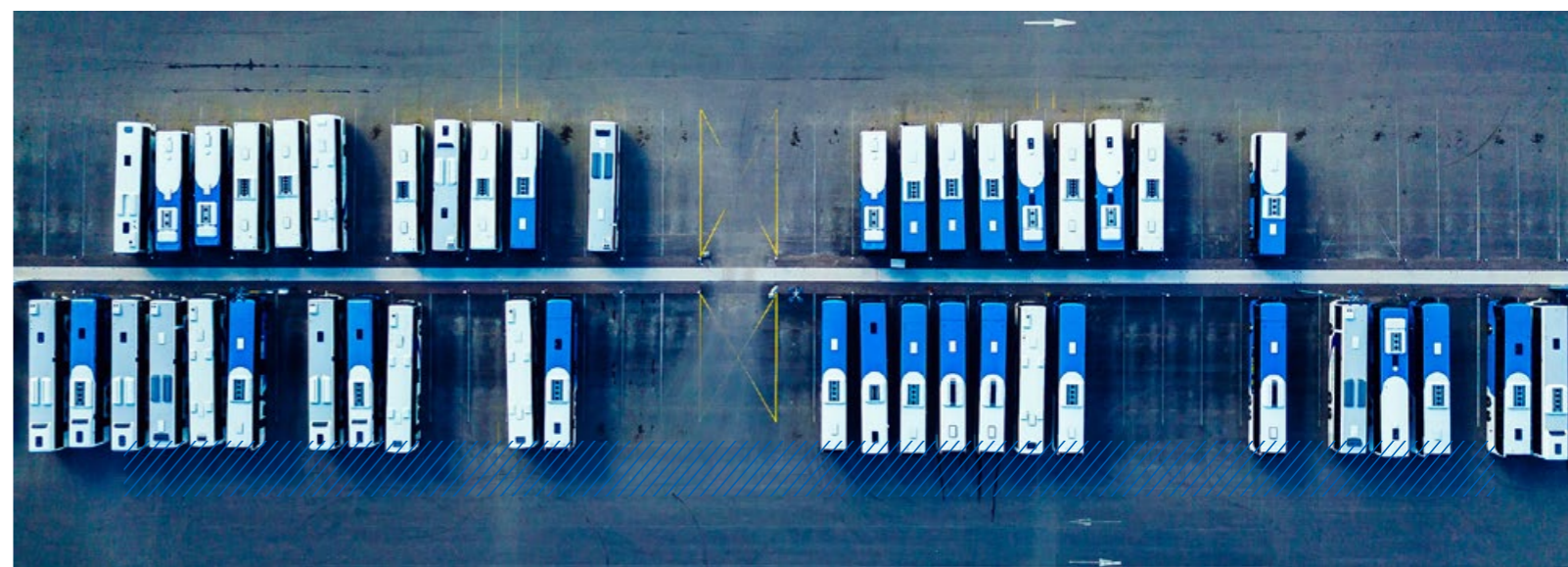
TRACTOR	Page	FLOATER AND IMPLEMENT	
LR861	60	LBI301(Radial)	67
LR700	62	FL300	68
LR650	63	LBI301(Bias)	80
LL31	72	LBI302	81
LL32	74	LL2	81
LL37	74	LL11	82
LL46	75	LL14	82
LBR102	75	LL15	83
LBR103	76	LL17	83
LBR105	76	LL19	83
LBR108	77	LL21	84
LL71	77	LL27	84
R-2	77	LL29	84
PR-1	78	LL38	85
LBPR102	78	LL82	85
LL30	79	LL40	85
LBF201	79		
		INDUSTRIAL VEHICLE	
HARVESTER		LR451	69
LR7000	64	LR400	69
LR8000	65	LBR401	86
SPRING ULTRA FLEX	65	LL101	86
		LL101A	87
SPRAYER AND ROW CROP		LBI302	87
LR861	66		
LR9000	66		

LINGLONG BIAS INDUSTRIAL TIRE SIZE CHART

INDUSTRIAL SERVICE	Page		
LL2	90	LL102	92
LL39	91	LL103	92
LL45	91	LF401	93
LL65	92	LF402	93

LINGLONG BIAS TIRE SIZE CHART

LIGHT TRUCK SERVICE	Page	PASSENGER CAR SERVICE	
LL2	96	LL19	109
LL8	96	LL64	109
LL9	97		
LL9A	97	TRUCK/BUS SERVICE	
LL10	98	LL1	110
LL11	98	LL2	110
LL15	99	LL3	111
LL16	100	LL4	111
LL17	100	LL6	112
LL18	101	LL7	112
LL19	101	LL47	113
LL47	102	LL57	113
LL59	102	LL58	114
LL62	103	LL59	114
LL87	103	LL67	115
LL89	104	LL87	115
MG-99	104	LL95	116
LL99	105	LL96	116
LL109	105	LL96-T	117
LL168A	106	SL96-T	117
LL201	106	LL97	118
		LL98	118
MINI TRUCK SERVICE		LL150	119
LL20	107	LL159	119
LL21	108		
LL41	108		
LL75	108		





INTRODUCTION

Shandong Linglong Tyre Co., Ltd. is a technical tire manufacturer integrating tire design, development, manufacturing and sales. Founded in 1975, the company, with over 40-year forging ahead, has seven R&D centers, seven manufacturing bases across the world currently and over 18,000 employees, with its products widely used on passenger vehicles, commercial vehicles, and engineering machinery vehicles. It has built diversified brand system for different markets, including Linglong, LEAO, ATLAS, EVOLUXX etc. Linglong Tire had successful access to the A share market on July 6, 2016. It has been included in the three international indexes, the MSCI Index, the FTSE Russell Index and the S&P Emerging Market Indexes, winning the unanimous favor of the international capital market.

Linglong collects global extraordinary talents. Based on its national enterprise design center, national recognized testing laboratory and national industrial design center, the company has established R&D institutions in Germany, America, Beijing, Shanghai, Jinan, Yantai and Zhaoyuan, and has constructed the world class Sino-Asia Tire Proving Ground in China.

Through its leading innovative strength, Linglong successfully developed dandelion rubber tire, graphene reinforced tread tire, racing tire, 3D printing polyurethane tire, run-flat tire, and low odor tire. It was awarded Second Prize of National Award for Technological Invention, Second National Prize for Progress in Science and Technology and China Industry Award. Till now, the company has obtained over 1200 effective authorized patents in total.

Linglong has sponsored over 100 sports events and teams worldwide, such as VfL Wolfsburg, to enhance its brand awareness and influence. It strengthens the retail network construction, with nearly 100,000 marketing outlets globally, promoting its brand reputation and customer loyalty through reliable product quality and excellent service. To attracting more target consumers, the company launches at airports and high-speed rail stations in major cities across the world and several CCTV programs. For many years, Linglong has been participating SEMA show and Automechanika Dubai etc. to enhance its product reputation and build the international brand image. Linglong's brand value reached 82.717 Billion RMB in 2023.

The company's products are exported to 173 countries across the world, covering Europe, Middle East, Americas, Asia Pacific, and Africa, and provides OE service for over 60 global well-known automakers, the total volume of OE tires up to 200 million units.

In order to promote its high-quality global industrial layout and increase its core brand competitiveness in global market. Linglong has been firmly promoting its 7+5 global layout to build seven Chinese manufacturing bases as well as five overseas manufacturing bases. At present, the company has five Chinese manufacturing bases in Zhaoyuan, Dezhou, Liuzhou, Jingmen, Changchun and two overseas manufacturing bases in Thailand and Serbia. Meanwhile, Linglong will carry out active inspection of its new factory's location, aiming at completing the full completion of 7+5 global layout, and fully utilizing global resources and expanding its global tire market.

In the future, the company will accelerate to implement its global layout, fully improve its core competitiveness, and strive to achieve its annual production and sales volume reaching 160 million units, sales revenue of over RMB 80 billion and production capacity among global top five tire manufacturers by 2030, becoming a technology-oriented enterprise with world-class technology, management and brand influence.

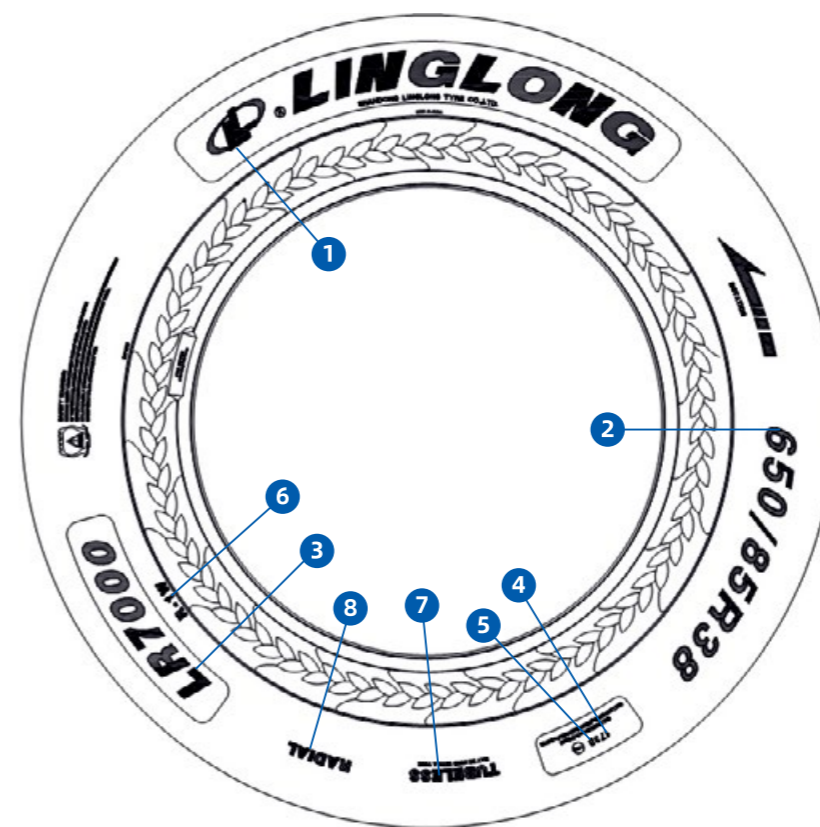


SPECIALTY TIRE SIZE MARKING



Description

- 1 **LINGLONG** Brand
- 2 **17.5R25** Size designation
- 3 **LHD MASTER** Tread pattern
- 4 **L-5S** IND Code
- 5 **☆☆** Star rating
- 6 **14.00** Standard rim
- 7 **C1** Tread compound
- 8 **TUBETYPE** Type
- 9 **RADIAL** Construction

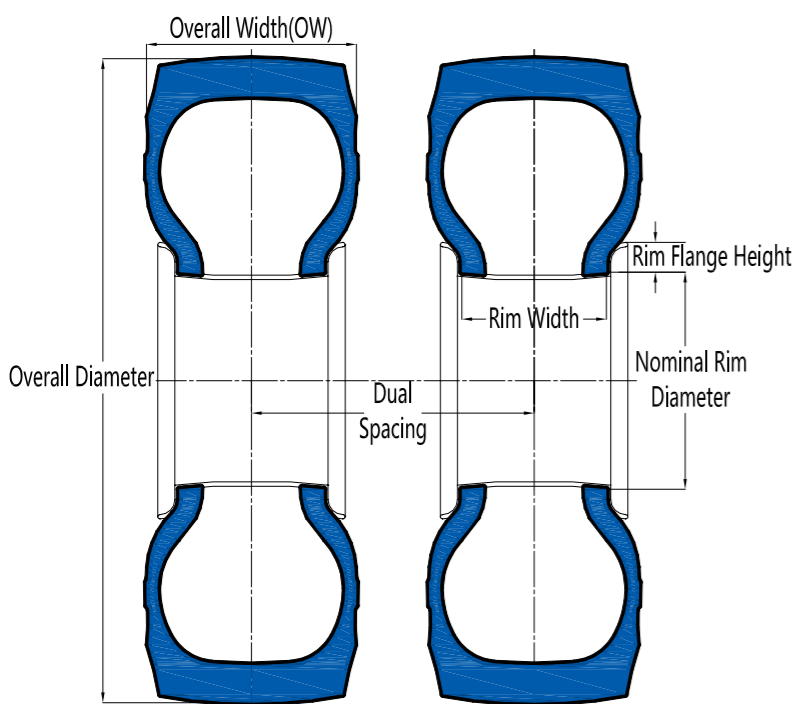


Description

- 1 **LINGLONG** Brand
- 2 **650/85R38** Size designation
- 3 **LR7000** Tread pattern
- 4 **173** Load Index
- 5 **D** Speed Symbols
- 6 **R-1W** IND Code
- 7 **TUBELESS** Type
- 8 **RADIAL** Construction



SPECIALTY TIRE SIZE MARKING



Overall Diameter (OD)

“Overall Diameter” is twice the section height of a new tire, plus the nominal rim diameter, including 24-hour inflation growth.

Overall Width (OW)

“Overall Width” is the width of a new tire, including 24-hour inflation growth, and including protective side ribs, bars or decorations.

Section Width (SW)

“Section Width” is the width of a new tire, including 24-hour inflation growth and including normal sidewalls, but not including protective side ribs, bars, or decorations.

27.00R49	
27.00	Nominal section width (in inches)
R	Radial construction
49	Nominal rim diameter (in inches)

750/65R25	
750	Nominal section width (in mm)
65	Aspect ratio H/SW (in %)
R	Radial construction
25	Nominal rim diameter (in inches)

16/70-20	
16	Nominal section width (in inches)
70	Aspect ratio H/SW (in %)
-	Cross-ply construction
20	Nominal rim diameter (in inches)

31×15.50-15	
31	Overall diameter (in inches)
15.5	Nominal section width (in inches)
-	Cross-ply construction
15	Nominal rim diameter (in inches)

20.5L-25	
20.5	Nominal section width (in inches)
L	Reduced aspect ratio
-	Cross-ply construction
25	Nominal rim diameter (in inches)

16×4	
16	Overall diameter (in inches)
4	Nominal section width (in inches)

SPECIALTY TIRE INDUSTRIAL CODE

Agricultural And Forestry Tires

Code	Tread Type	Application
R-1	Regular Service	
R-1W	Wet Traction Service	
R-1S	Sprayer/Spreader Service	Agricultural Tractor Driving Wheel Tires
R-2	Cane and Rice Service(deep tread)	
R-3	Flotation Service(shallow tread)	
R-4	Industrial Service(construction service)	
F-1	Single Rib Tread	Agricultural Tractor Guide Wheel Tires
F-2	Multiple Rib Tread	(non-traction pattern)
F-3	Industrial Service(construction service)	
I-1	Multi-rib Tread	
I-2	Moderate Traction Service	Agricultural Implement Tires
I-3	Traction Tread	
I-4	Plow Tail Wheel Service	
I-5	Steering Service	
LS-1	Regular Tread	
LS-2	Intermediate Tread	Logging Service Tires
LS-3	Deep Tread	
LS-4	Shallow Tread	
HF-1	Shallow Tread	
HF-2	Regular Tread	High Flotation
HF-3	Deep Tread	
HF-4	Extra Deep Tread	

IF

Improved Flexion structure

Makes it possible to operate the tire with 20% more load at the same inflation pressure/speed compared to standard tire at max. speed. When used with the same load /speed as a standard tire the IF tire may be used with lower inflation pressure.

VF

Very High Flexion structure

Makes it possible to operate the tire with 40% more load at the same inflation pressure/speed compared to standard tire at max. speed. When used with the same load /speed as a standard tire the VF tire may be used with lower inflation pressure.

CHO

Cyclic Harvest Operation

Tire that can operate with significant higher load, but only on the field operation with changing cyclic load conditions (for example, harvester with filling up and de loading the internal grain storage). Load, speed and pressure conditions should be defined by tire manufacturer for this kind of operation.

CFO

Cyclic Field Operation

IF or VF tires primarily designed for Agro machines used on cyclic field operations (cyclic load change, like CHO tire).

Off-the-road Tires

Code	Tread Type		Application
E-1	Rib	Regular	Earthmover Service
E-2	Traction	Regular	
E-3	Rock	Regular	
E-4	Rock	Deep	
E-7	Flotation	Shallow	
G-1	Rib	Regular	Grader Service
G-2	Traction	Regular	
G-3	Rock	Regular	
G-4	Rock	Deep	
L-2	Traction	Regular	Loader & Dozer Service
L-3	Rock	Regular	
L-4	Rock	Deep	
L-5	Rock	Extra Deep	
L-3S	Smooth	Regular	
L-4S	Smooth	Deep	
L-5S	Smooth	Extra Deep	
C-1	Smooth	Regular	Compactor Service
C-2	Grooved	Regular	

Specialty Tire Tread Compound

Cut resistant compound: C1/C2

Standard compound: S1/S2/S3/S4

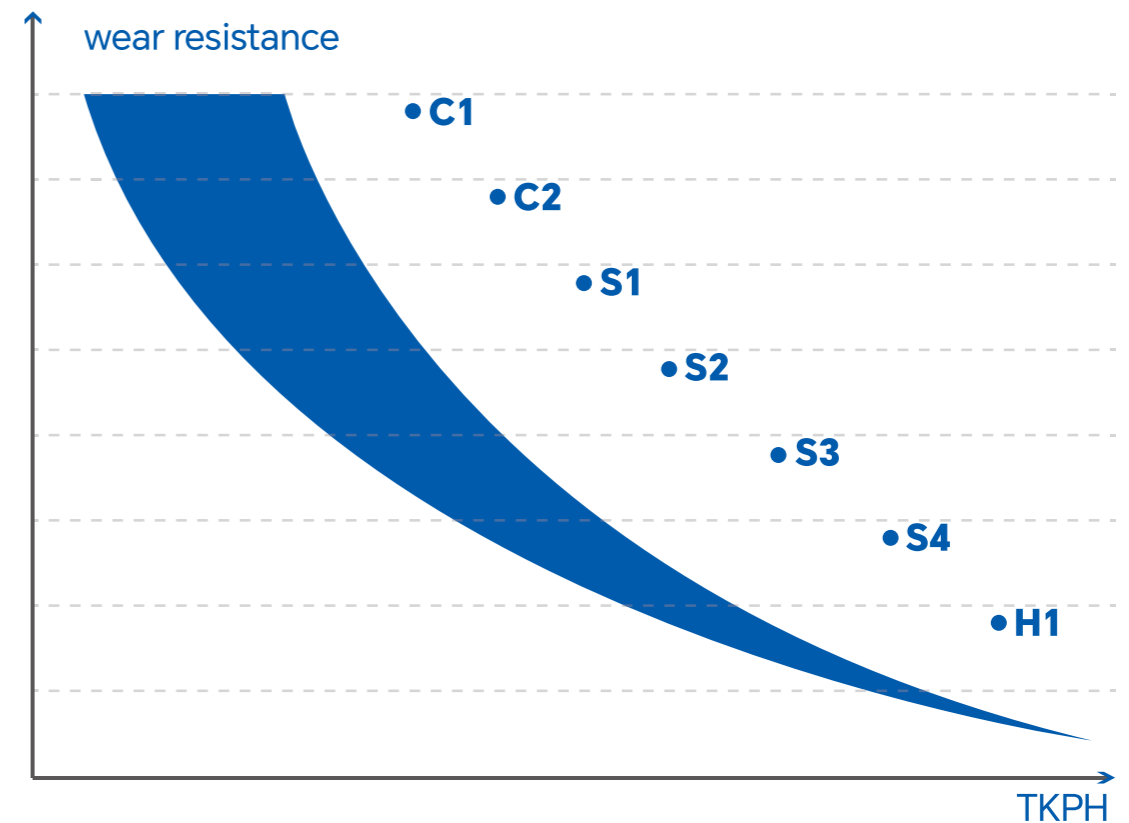
Heat resistant compound: H1

type	TKPH
C1	minimum
C2	low
S1	moderate
S2	average
S3	high
S4	very high
H1	highest

Mixing Of Bias And Radial Tires On A Vehicle

- SAME AXLE on any vehicle – Bias and radial tires must not be mixed on the same axle of any vehicle (drive, steer or trail).
- Haul Trucks – When mixing tire constructions, radial tires should be used only on the front/steer axle and bias tires should be used only on the rear/drive axle.
- Loaders, Container Handlers, Reach Stackers, Forklifts – Bias tires can be used on one axle and radials on the other axle.
- Graders – Bias or radial tires can be used on the front axle. Bias or radial tires can be used on the rear axles. NOTE: The tandem axles must have tires of the same construction – all radial tires or all bias tires.
- Articulated Dump Truck (ADT) – Do not mix bias and radial tires on an ADT. Radial tires are recommended.
- Scrapers – Mixing of bias and radial tires is not recommended. Use only bias tires or only radial tires.
- Mobile Cranes – Due to differences in cornering force characteristics and spring rates, the best tire and vehicle performance will be obtained by applying tires of the same size and construction (radial ply or bias ply) to all vehicle wheel positions. However, different tire constructions are permitted on the steer, drive, and trailer axles of two-axle, tandem, and multiple-axle combinations when the following rules are observed.

- Never mix different tire sizes or tire constructions on the same axle.
- If radials are mixed with bias tires, the best handling will be obtained with the bias tires on the steer axle.
- Bias or radial tires may be used on either axle of two-axle vehicles, providing the vehicle has dual rear wheels or is equipped with Super Single wide-base tires.
- Either bias or radial tires may be used on the steering axle of vehicles with three or more axles.
- Either all bias or all radial tires should be used on the nonsteering axles.
- Never mix bias and radial tires in a tandem or multiple axle combination.



Load Index And Speed Symbol

LI	KG	LBS.	LI	KG	LBS.	LI	KG	LBS.
100	800	1760	135	2180	4810	170	6000	13230
101	825	1820	136	2240	4940	171	6150	13560
102	850	1870	137	2300	5070	172	6300	13890
103	875	1930	138	2360	5200	173	6500	14330
104	900	1980	139	2430	5360	174	6700	14770
105	925	2040	140	2500	5510	175	6900	15210
106	950	2090	141	2575	5680	176	7100	15650
107	975	2150	142	2650	5840	177	7300	16090
108	1000	2200	143	2725	6010	178	7500	16530
109	1030	2270	144	2800	6170	179	7750	17090
110	1060	2340	145	2900	6390	180	8000	17640
111	1090	2400	146	3000	6610	181	8250	17190
112	1120	2470	147	3075	6780	182	8500	18740
113	1150	2540	148	3150	6950	183	8750	19290
114	1180	2600	149	3250	7170	184	9000	19840
115	1215	2680	150	3350	7390	185	9250	20390
116	1250	2760	151	3450	7610	186	9500	20940
117	1285	2830	152	3550	7830	187	9750	21500
118	1320	2910	153	3650	8050	188	10000	22050
119	1360	3000	154	3750	8270	189	10300	22710
120	1400	3090	155	3875	8540	190	10600	23370
121	1450	3200	156	4000	8820	191	10900	24060
122	1500	3310	157	4125	9090	192	11200	24690
123	1550	3420	158	4250	9370	193	11500	25360
124	1600	3530	159	4375	9650	194	11800	26020
125	1650	3640	160	4500	9920	195	12150	26790
126	1700	3750	161	4625	10200	196	12500	27560
127	1750	3860	162	4750	10470	197	12850	28330
128	1800	3970	163	4875	10750	198	13200	29100
129	1850	4080	164	5000	11020	199	13600	29990
130	1900	4190	165	5150	11350	200	14000	30870
131	1950	4300	166	5300	11690	201	14500	31970
132	2000	4410	167	5450	12020	202	15000	33070
133	2060	4540	168	5600	12350	203	15500	34180
134	2120	4670	169	5800	12790	204	16000	35280

Load Index And Speed Symbol

LI	KG	LBS.	LI	KG	LBS.	LI	KG	LBS.
205	16500	36380	230	33500	73870	255	69000	152120
206	17000	37480	231	34500	76070	256	71000	156530
207	17500	38590	232	35500	78280	257	73000	160930
208	18000	39690	233	36500	80480	258	75000	165340
209	18500	40790	234	37500	82690	259	77500	170660
210	19000	41890	235	38750	85430	260	80000	176400
211	19500	43000	236	40000	88200	261	82500	181880
212	20000	44100	237	41250	90940	262	85000	187390
213	20600	45420	238	42500	93710	263	87500	192900
214	21200	46750	239	43750	96470	264	90000	198450
215	21800	48070	240	45000	99210	265	92500	203920
216	22400	49390	241	46250	101960	266	95000	209440
217	23000	50700	242	47500	104720	267	97500	214950
218	23600	52040	243	48750	107470	268	100000	220500
219	24300	53580	244	50000	110250	269	103000	227370
220	25000	55120	245	51500	113540			
221	25750	56780	246	53000	117950			
222	26500	58430	247	54500	120150			
223	27250	60070	248	56000	123480			
224	28000	61740	249	58000	127890			
225	29000	63940	250	60000	132300			
226	30000	66150	251	61500	135580			
227	30750	67790	252	63000	138890			
228	31500	69460	253	65000	143300			
229	32500	71660	254	67000	147710			

Speed Symbol	A1	A2	A3	A4	A5	A6	A7	A8	B	C	D	E	F	G	J	K	L	M
Speed (km/h)	5	10	15	20	25	30	35	40	50	60	65	70	80	90	100	110	120	130
Speed (mph)	3	6	9	12	16	19	22	25	31	37	40	43	50	56	62	68	75	81



Tread Depth And Air Pressure Conversion Data

MM	32 ^{NDS}	MM	32 ^{NDS}	KPA	PSI	KPA	PSI	KPA	PSI
1	1	45	57	100	15	540	78	980	142
2	3	46	58	110	16	550	80	990	144
3	4	47	59	120	17	560	81	1000	145
4	5	48	60	130	19	570	83	1010	146
5	6	49	62	140	20	580	84	1020	148
6	8	50	63	150	22	590	86	1030	149
7	9	55	69	160	23	600	87	1040	151
8	10	60	76	170	25	610	88	1050	152
9	11	65	82	180	26	620	90	1060	154
10	13	70	88	190	28	630	91	1070	155
11	14	75	94	200	29	640	93	1080	157
12	15	80	101	210	30	650	94	1090	158
13	16	85	107	220	32	660	96	1100	160
14	18	90	113	230	33	670	97	1110	161
15	19	95	120	240	35	680	99	1120	162
16	20	100	126	250	36	690	100	1130	164
17	21	105	132	260	38	700	102	1140	165
18	23	110	139	270	39	710	103	1150	167
19	24	115	145	280	41	720	104	1160	168
20	25	120	151	290	42	730	106	1170	170
21	26	125	157	300	44	740	107	1180	171
22	28	130	164	310	45	750	109	1190	173
23	29	135	170	320	46	760	110	1200	174
24	30	140	176	330	48	770	112		
25	31	145	183	340	49	780	113		
26	33	150	189	350	51	790	115		
27	34	155	195	360	52	800	116		
28	35	160	202	370	54	810	117		
29	37	165	208	380	55	820	119		
30	38	170	214	390	57	830	120		
31	39	175	220	400	58	840	122		
32	40	180	227	410	59	850	123		
33	42	185	233	420	61	860	125		
34	43	190	239	430	62	870	126		
35	44	195	246	440	64	880	128		
36	45	200	252	450	65	890	129		
37	47	205	258	460	67	900	131		
38	48	210	265	470	68	910	132		
39	49	215	271	480	70	920	133		
40	50	220	277	490	71	930	135		
41	52	225	283	500	73	940	136		
42	53	230	290	510	74	950	138		
43	54	235	296	520	75	960	139		
44	55			530	77	970	141		

Tire Size Equivalent Chart

Metric	Inch
385/95R24,25	14.00R24,25
445/95R24,25	16.00R24,25
445/80R25	17.5R25
505/95R25	18.00R25
525/80R25	20.5R25
750/65R25	30/65R25

NO.	Metric	Inch	Bias
1	280/85R24	11.2R24	11.2-24
2	320/85R24	12.4R24	12.4-24
3	320/85R28	12.4R28	12.4-28
4	320/85R32	12.4R32	12.4-32
5	320/85R36	12.4R36	12.4-36
6	320/90R46	12.4R46	12.4-46
7	340/85R24	13.6R24	13.6-24
8	340/85R28	13.6R28	13.6-28
9	340/85R32	13.6R32	13.6-32
10	340/85R36	13.6R36	13.6-36
11	340/85R38	13.6R38	13.6-38
12	380/85R24	14.9R24	14.9-24
13	380/85R28	14.9R28	14.9-28
14	380/85R30	14.9R30	14.9-30
15	380/85R34	14.9R34	14.9-34
16	380/90R46	14.9R46	14.9-46
17	380/90R50	14.9R50	14.9-50
18	400/70R18 IND	16/70R18(14.5R18)	16/70-18(14.5-18)
19	400/70R20 IND	16/70R20(14.5R20)	16/70-20(14.5-20)
20	405/70R18	16/70R18(14.5R18)	16/70-18(14.5-18)
21	405/70R20	16/70R20(14.5R20)	16/70-20(14.5-20)

NO.	Metric	Inch	Bias
22	420/80R46	16.9R46	16.9-46
23	420/85R24	16.9R24	16.9-24
24	420/85R28	16.9R28	16.9-28
25	420/85R30	16.9R30	16.9-30
26	420/85R34	16.9R34	16.9-34
27	420/85R38	16.9R38	16.9-38
28	420/90R30	16.9R30	16.9-30
29	460/70R24 IND	17.5LR24	17.5L-24
30	460/85R30	18.4R30	18.4-30
31	460/85R34	18.4R34	18.4-34
32	460/85R38	18.4R38	18.4-38
33	460/85R42	18.4R42	18.4-42
34	460/85R46	18.4R46	18.4-46
35	480/80R42	18.4R42	18.4-42
36	480/80R46	18.4R46	18.4-46
37	500/70R24 IND	19.5LR24	19.5L-24
38	520/85R38	20.8R38	20.8-38
39	520/85R42	20.8R42	20.8-42
40	800/65R32	30.5LR32	30.5L-32
41	650/75R32	24.5R32	24.5-32
42	750/65R26	28LR26	28L-26

RADIAL OFF-THE-ROAD TIRES TREAD PATTERN AND SIZE

RADIAL OFF-THE-ROAD TIRES TREAD PATTERN AND SIZE

Loader and Dozer Service	22-24
Grader Service	25-26
Rigid Dump Trucks Service	27-31
ADT and Scraper Service	32-33
Mobile Crane Service	34-34
Sand Service	35-35
Underground Mine Service	36-37
Heavy Truck Service	38-39



Loader And Dozer Service

LR400

Radial



- Nylon casing provides superior riding comfort
- Steel belted tread design prevents tire puncture
- Special tread compound enhances tread wearing

Size	Load Index	TRA Code	Speed Index	Rim	Section width (mm)	Overall Diameter (mm)	Tread Depth (mm)	Load Capacity (kg)	Inflation Pressure (kPa)	Type
405/70R18	141/153	-	B/A2	13.00	407	1025	23	2575	380	TL
405/70R20	143/155	-	B/A2	13.00	407	1076	23	2725	380	TL



LB01N

E-3/L-3 Radial



- Optimized tread compound for extended wear and endurance
- Wide aggressive tread design for excellent handling and lateral adhesion
- Maximized sidewall reinforcement protects against cutting and abrasion in the toughest applications

Size	Star rating	TRA Code	Speed Index	Rim	Section width (mm)	Overall Diameter (mm)	Tread Depth (mm)	Load Capacity (kg)	Inflation Pressure (kPa)	Tread Compound	Type
17.5R25	☆☆	E-3/L-3	A2	14.00/1.5	445	1348	27	8500	650	C1	TL
20.5R25	☆☆	E-3/L-3	A2	17.00/2.0	521	1493	30	11500	650	C1	TL
23.5R25	☆☆	L-3	A2	19.50/2.5	597	1617	33	14500	650	C1	TL
26.5R25	☆☆	L-3	A2	22.00/3.0	673	1750	36	18500	650	C1	TL
29.5R25	☆☆	L-3	A2	25.00/3.5	749	1874	39	22400	650	C1	TL



LB06S

L-3 Radial



- Excellent lateral grip on soft terrain due to self-cleaning tread pattern
- Excellent traction on rocky, gravel and packed earth surface in mines, quarries and construction sites
- Special styrene-butadiene rubber tread compound improves wearing and reduces heat generation

Size	Star Rating	TRA Code	Speed Index	Rim	Section Width (mm)	Overall Diameter (mm)	Tread Depth (mm)	Load Capacity (kg)	Inflation Pressure (kPa)	Tread Compound	Type
26.5R25	☆☆	L-3	A2	22.00/3.0	673	1750	44	18500	650	C1	TL
29.5R25	☆☆	L-3	A2	25.00/3.5	749	1874	44	22400	650	C1	TL
750/65R25	☆☆	E-3/L-3	A2	24.00/3.0	754	1611	45	18500	625	C2	TL
850/65R25	☆☆	E-3/L-3	A2	27.00/3.5	852	1741	46	23000	625	C2	TL



LB02SD

L-5 Radial



- Directional tread pattern enhances traction in mud and soft conditions
- Excellent performance in severe rock application
- Deep tread depth provides outstanding wearing life

Size	Star Rating	TRA Code	Speed Index	Rim	Section Width (mm)	Overall Diameter (mm)	Tread Depth (mm)	Load Capacity (kg)	Inflation Pressure (kPa)	Tread Compound	Type
20.5R25	☆☆	L-5	A2	17.00/2.0	521	1548	70	11500	650	C1	TL
23.5R25	☆☆	L-5	A2	19.50/2.5	597	1673	76	14500	650	C1	TL
26.5R25	☆☆	L-5	A2	22.00/3.0	673	1798	85	18500	650	C1	TL
29.5R25	☆☆	L-5	A2	25.00/3.5	747	1895	91	22400	650	C1	TL



LSN201

E-2/L-2 Radial

- Exceptional maneuverability on ice and snow
- Optimized tread pattern for maximum traction
- Special snow tread compound enhances grip



Size	Star Rating	TRA Code	Speed Index	Rim	Section Width (mm)	Overall Diameter (mm)	Tread Depth (mm)	Load Capacity (kg)	Inflation Pressure (kPa)	Type
15.5R25	☆☆	E-2/L-2	A2	12.00/1.3	394	1278	24	7100	650	TL
17.5R25	☆☆	E-2/L-2	A2	14.00/1.5	445	1348	27	8500	650	TL
20.5R25	☆☆	E-2/L-2	A2	17.00/2.0	521	1493	30	11500	650	TL
23.5R25	☆☆	E-2/L-2	A2	19.50/2.5	597	1617	32	14500	650	TL
26.5R25	☆☆	E-2/L-2	A2	22.00/3.0	673	1750	35	18500	650	TL



LB03SD

L-5 Radial

- Combined smooth and lug tread pattern for enhanced cut resistance and traction
- High-tensile steel belt package for enhanced impact resistance
- Deep tread depth for extra grip and long wear



Size	Star Rating	TRA Code	Speed Index	Rim	Section Width (mm)	Overall Diameter (mm)	Tread Depth (mm)	Load Capacity (kg)	Inflation Pressure (kPa)	Tread Compound	Type
17.5R25	☆☆	L-5	A2	14.00/1.5	445	1399	63	8500	650	C1	TL
20.5R25	☆☆	L-5	A2	17.00/2.0	521	1548	70	11500	650	C1	TL
23.5R25	☆☆	L-5	A2	19.50/2.5	597	1673	76	14500	650	C1	TL
26.5R25	☆☆	L-5	A2	22.00/3.0	673	1798	85	18500	650	C1	TL
29.5R25	☆☆	L-5	A2	25.00/3.5	747	1895	91	22400	650	C1	TL



GRADER MASTER

G-2/L-2 Radial

- Non-directional tread pattern delivers exceptional traction and stability
- Enhanced sidewall intersection offers improved resistance to damage
- Unique tread compound offers excellent wear life



Size	Star Rating	TRA code	Speed Index	Rim	Section Width (mm)	Overall Diameter (mm)	Tread Depth (mm)	Load Capacity (kg)	Inflation Pressure (kPa)	Type
14.00R24	☆	G-2/L-2	A8/A2	8.00TG	351	1347	26	3650	375	TL



LXS MASTER



GRADER SERVICE

G-2/L-2 Radial

- Protective band on the shoulder/sidewall interface provide excellent protection against accidental damage
- Tread blocks with multiple sipes and offset shoulder blocks ensure excellent traction in mud and on snow and ice
- The tread pattern, open at the shoulders, is the foundation for the excellent self cleaning in snow or mud



Size	Star Rating	TRA Code	Speed Index	Rim	Section Width (mm)	Overall Diameter (mm)	Tread Depth (mm)	Load Capacity (kg)	Inflation Pressure (kPa)	Type
14.00R24	☆	G-2/L-2	A8/A2	8.00TG	362	1348	23	3650	375	TL

LB01N



GRADER SERVICE

E-3/L-3 Radial

- Optimized tread compound for extended wear and endurance
- Wide aggressive tread design for excellent handling and lateral adhesion
- Maximized sidewall reinforcement protects against cutting and abrasion in the toughest applications



Size	Star Rating	TRA Code	Speed Index	Rim	Section Width (mm)	Overall Diameter (mm)	Tread Depth (mm)	Load Capacity (kg)	Inflation Pressure (kPa)	Tread Compound	Type
17.5R25	☆☆	E-3/L-3	B	14.00/1.5	445	1348	27	5450	525	C1	TL
20.5R25	☆☆	E-3/L-3	B	17.00/2.0	521	1493	30	7300	525	C1	TL
23.5R25	☆☆	E-3	B	19.50/2.5	597	1617	33	9250	525	S1	TL

LSN201



GRADER SERVICE

E-2/L-2 Radial

- Exceptional maneuverability on ice and snow
- Optimized tread pattern for maximum traction
- Special snow tread compound enhances grip



Size	Star Rating	TRA Code	Speed Index	Rim	Section Width (mm)	Overall Diameter (mm)	Tread Depth (mm)	Load Capacity (kg)	Inflation Pressure (kPa)	Type
15.5R25	☆☆	E-2/L-2	B	12.00/1.3	394	1278	24	4500	525	TL
17.5R25	☆☆	E-2/L-2	B	14.00/1.5	445	1348	27	5450	525	TL
20.5R25	☆☆	E-2/L-2	B	17.00/2.0	521	1493	30	7300	525	TL
23.5R25	☆☆	E-2/L-2	B	19.50/2.5	597	1617	32	9250	525	TL

Rigid Dump Trucks Service



LDO993



RIGID DUMP TRUCKS SERVICE

E-3 Radial

- Wide and big transverse grooves deliver better cut resistance for short one-way distance application
- Outstanding tire life and exceptional resistance to aggression
- Standard tread compound design, balancing cutting and heat resistance



Size	Star Rating	TRA Code	Speed Index	Rim	Section Width (mm)	Overall Diameter (mm)	Tread Depth (mm)	Load Capacity (kg)	Inflation Pressure (kPa)	Tread Compound	Type
14.00R24	☆☆☆	E-3	B	10.00W	375	1370	29.5	5800	700	S2	TT

LDO993+

E-3 Radial



RIGID DUMP TRUCKS SERVICE



- Wide and big transverse grooves deliver better cut resistance for short one-way distance application
- Outstanding tire life and exceptional resistance to aggression
- Diversified tread compounds meet performance requirements in different scenarios

Size	Star Rating	TRA Code	Speed Index	Rim	Section Width (mm)	Overall Diameter (mm)	Tread Depth (mm)	Load Capacity (kg)	Inflation Pressure (kPa)	Tread Compound	Type
14.00R25	☆☆☆	E-3	B	10.00/2.0	375	1371	27	5800	700	C2/S1/S2	TT/TL
16.00R25	☆☆☆	E-3	B	11.25/2.0	437	1492	31	8000	800	C2/S1/S2	TT/TL



DM668

E-3 Radial



RIGID DUMP TRUCKS SERVICE



- Unique compound for enhanced cutting resistance and long tread life
- Block pattern for effective heat dissipation and long one-way distance application
- Standard tread compound design, balancing cutting and heat resistance

Size	Star Rating	TRA Code	Speed Index	Rim	Section Width (mm)	Overall Diameter (mm)	Tread Depth (mm)	Load Capacity (kg)	Inflation Pressure (kPa)	Tread Compound	Type
14.00R25	☆☆☆	E-3	B	10.00/2.0	361	1354	27	5800	700	S1	TT/TL

DM669

E-3 Radial



RIGID DUMP TRUCKS SERVICE



- Proper horizontal tread pattern balances cut resistance and heat generation for medium one-way distance application
- Diversified tread compounds meet performance requirements in different scenarios

Size	Star Rating	TRA Code	Speed Index	Rim	Section Width (mm)	Overall Diameter (mm)	Tread Depth (mm)	Load Capacity (kg)	Inflation Pressure (kPa)	Tread Compound	Type
14.00R25	☆☆☆	E-3	B	10.00	361	1354	27	5800	700	S1/S2/S3	TT/TL

LXD988

E-3 Radial



RIGID DUMP TRUCKS SERVICE



- Reinforced carcass for higher load capacity and explosion-proof performance
- Aggressive tread pattern for enhanced cutting and slipping resistance
- Diversified tread compounds meet performance requirements in different scenarios

Size	Star Rating	TRA Code	Speed Index	Rim	Section Width (mm)	Overall Diameter (mm)	Tread Depth (mm)	Load Capacity (kg)	Inflation Pressure (kPa)	Tread Compound	Type
16.00R25	☆☆☆	E-3	B	11.25/2.0	437	1492	27	8000	800	C2/S1/S2	TT/TL

LXD998

E-3 Radial



RIGID DUMP TRUCKS SERVICE

- Deeper tread depth delivers longer life
- Reinforced carcass for higher load capacity and explosion-proof performance
- Aggressive tread pattern for enhanced cutting and slipping resistance



Size	Star Rating	TRA Code	Speed Index	Rim	Section Width (mm)	Overall Diameter (mm)	Tread Depth (mm)	Load Capacity (kg)	Inflation Pressure (kPa)	Tread Compound	Type
16.00R25	☆☆☆	E-3	B	11.25/2.0	437	1492	31	8000	800	C2/S1/S2	TT/TL

LB02S

E-4 Radial



RIGID DUMP TRUCKS SERVICE

- Special compounds for exceptional wear and cut resistance
- Self-cleaning tread design provides good traction and stability on the soft and muddy ground
- Deeper tread depth ensures exceptional tread wear



Size	Star Rating	TRA Code	Speed Index	Rim	Section Width (mm)	Overall Diameter (mm)	Tread Depth (mm)	Load Capacity (kg)	Inflation Pressure (kPa)	Tread Compound	Type
18.00R33	☆☆	E-4	B	13.00/2.5	498	1877	52	10900	700	S1	TL

DM668+

E-4 Radial



RIGID DUMP TRUCKS SERVICE

- Unique compound for enhanced cutting resistance
- Tough casing construction for enhanced impact and cut resistance support
- Deep lug pattern tread delivers longer service life and better traction capacity



Size	Star Rating	TRA Code	Speed Index	Rim	Section Width (mm)	Overall Diameter (mm)	Tread Depth (mm)	Load Capacity (kg)	Inflation Pressure (kPa)	Tread Compound	Type
14.00R25	☆☆☆	E-4	B	10.00	361	1374	37	5800	700	C2/S1	TT/TL
16.00R25	☆☆☆	E-4	B	11.25/2.0	432	1527	42	8000	800	C2/S1	TT/TL

MIX TRACTION

E-4 Radial



RIGID DUMP TRUCKS SERVICE

- Special tread compound for exceptional wear and cut resistance
- Self-cleaning tread design provides good traction and stability on the soft and muddy ground
- Deeper tread depth ensures exceptional tread wear



Size	Star Rating	TRA Code	Speed Index	Rim	Section Width (mm)	Overall Diameter (mm)	Tread Depth (mm)	Load Capacity (kg)	Inflation Pressure (kPa)	Tread Compound	Type
18.00R25	☆☆	E-4	B	13.00/2.5	498	1673	46	9250	700	S1	TL



ADT and Scraper Service

LB01N

E-3/L-3 Radial



ADT AND SCRAPER SERVICE

- Optimized tread compound for extended wear and endurance
- Wide aggressive tread design for excellent handling and lateral adhesion
- Maximized sidewall reinforcement protects against cutting and abrasion in the toughest applications

Size	Star Rating	TRA Code	Speed Index	Rim	Section Width (mm)	Overall Diameter (mm)	Tread Depth (mm)	Load Capacity (kg)	Inflation Pressure (kPa)	Tread Compound	Type
17.5R25	☆☆	E-3/L-3	B	14.00/1.5	445	1348	27	5450	525	C1	TL
20.5R25	☆☆	E-3/L-3	B	17.00/2.0	521	1493	30	7300	525	C1	TL
23.5R25	☆☆	E-3	B	19.50/2.5	597	1617	33	9250	525	S1	TL
26.5R25	☆☆	E-3	B	22.00/3.0	673	1750	36	11500	525	S1	TL
29.5R25	☆☆	E-3	B	25.00/3.5	749	1874	39	14000	525	S1	TL



LMS401

E-4 Radial



ADT AND SCRAPER SERVICE

- Optimized tread compound for extended wear and endurance
- Enhanced radial construction provides superior flotation and stability
- Tread pattern designed to deliver long tire life and great traction

Size	Star Rating	TRA Code	Speed Index	Rim	Section Width (mm)	Overall Diameter (mm)	Tread Depth (mm)	Load Capacity (kg)	Inflation Pressure (kPa)	Tread Compound	Type
20.5R25	☆☆	E-4	B	17.00/2.0	521	1493	50	7300	525	S1	TL
23.5R25	☆☆	E-4	B	19.50/2.5	597	1673	50	9250	525	S1	TL
26.5R25	☆☆	E-4	B	22.00/3.0	673	1798	55	11500	525	S1	TL
29.5R25	☆☆	E-4	B	25.00/3.5	749	1921	60	14000	525	S1	TL





Mobile Crane Service



Sand Service

CRANE MASTER

E-2 Radial



MOBILE CRANE SERVICE

- Improvement in irregular wear patterns so that the crane generates fewer vibrations
- More rigid rubber compound in the tread
- Tread design offers high-speed capability while minimizing fuel consumption

Size	Star Rating	TRA Code	Speed Index	Rim	Section Width (mm)	Overall Diameter (mm)	Tread Depth (mm)	Load Capacity (kg)	Inflation Pressure (kPa)	Type
385/95R24	☆☆☆	E-2	F	10.00W	379	1362	23	6000	900	TT
385/95R25	☆☆☆	E-2	F	10.00/1.5	379	1362	23	6000	900	TL
445/95R25	☆☆☆	E-2	F	11.25/2.0	435	1472	25	6700	900	TL



LXF MASTER

E-7 Radial



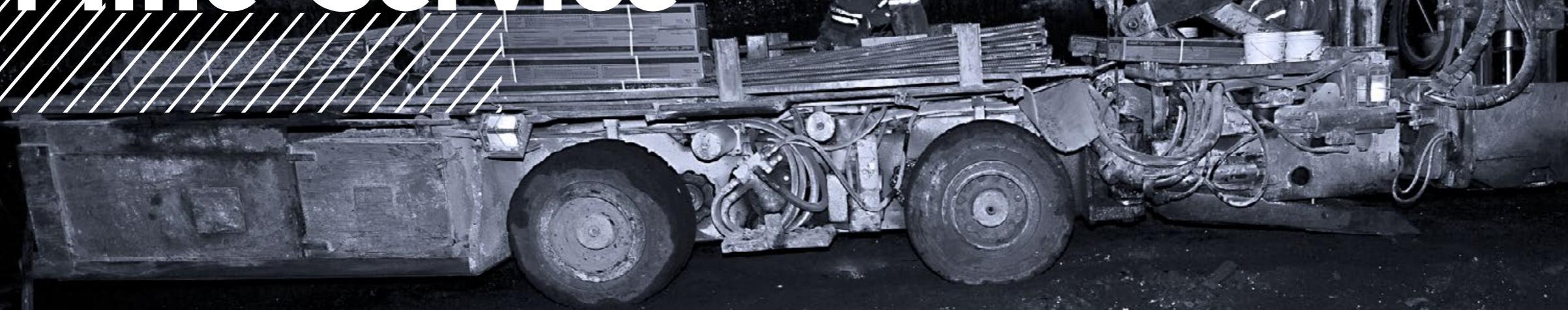
SAND SERVICE

- Multi-rocks with staggered tread blocks provides high mobility
- Optimized tread designed for desert and soft ground
- Strong casing provides heavy load at low inflation pressure

Size	Star Rating	TRA Code	Speed Index	Rim	Section Width (mm)	Overall Diameter (mm)	Tread Depth (mm)	Load Capacity (kg)	Inflation Pressure (kPa)	Type
24R20.5	☆	E-7	F	18.00	600	1370	20.5	7100	600	TL



Underground Mine Service



LHD MASTER



UNDERGROUND MINE SERVICE

L-5S Radial

- Strengthened grip with a large ground contact area
- Robust shoulders with sidewall protection
- Improved tire life in the harshest conditions thanks to optimized tread compound
- Wear indicators in tire tread facilitate tread wear assessment

Size	Star Rating	TRA Code	Speed Index	Rim	Section Width (mm)	Overall Diameter (mm)	Tread Depth (mm)	Load Capacity (kg)	Inflation Pressure (kPa)	Tread Compound	Type
12.00R24	☆☆	L-5S	A2	8.50V	315	1275	53	6900	825	C1	TT
<small>NEW</small> 14.00R24	☆☆☆	L-5S	A2	10.00W	375	1420	60	10000	950	C1	TT
17.5R25	☆☆	L-5S	A2	14.00/1.5	445	1400	78	8500	650	C1	TT/TL
<small>NEW</small> 18.00R25	☆☆	L-5S	A2	13.00/2.5	500	1675	83	16000	825	C1	TL
<small>NEW</small> 26.5R25	☆☆	L-5S	A2	22.00/3.0	685	1778	96	18500	650	C1	TL



LHD PREMIUM



UNDERGROUND MINE SERVICE

L-5S Radial

- Robust shoulders with sidewall protection
- Improved tire life in the harshest conditions thanks to optimized tread compound

Size	Star Rating	TRA Code	Speed Index	Rim	Section Width (mm)	Overall Diameter (mm)	Tread Depth (mm)	Load Capacity (kg)	Inflation Pressure (kPa)	Tread Compound	Type
<small>NEW</small> 17.5R25	☆☆	L-5S	A2	14.00/1.5	445	1390	73	8500	650	C1	TT/TL



Heavy Truck Service



LXF PREMIUM



- Directional pattern designed to deliver long tire life and even wear
- Nylon casing with supple sidewall provides superior riding comfort
- Optimized steel belted ensure anti-puncture performance



Size	Load Index	TRA Code	Speed Symbols	Rim	Section Width (mm)	Overall Diameter (mm)	Tread Depth (mm)	Load Capacity (kg)	Inflation Pressure (kPa)	Type
425/85R21	156	-	D	12.00/1.5	425	1265	24.0	4000	550	TT

D990 Radial



- Unique pattern design ensures the product has excellent off-road performance
- Open tire shoulder is conducive to heat dissipation



Size	Star Rating	TRA Code	Speed Index	Rim	Section Width (mm)	Overall Diameter (mm)	Tread Depth (mm)	Load Capacity (kg)	Inflation Pressure (kPa)	Type
14.00R20NHS	☆☆	E-2	B	10.00W	385	1236	17.5	5000	650	TT
16.00R20NHS	☆☆	E-2	B	11.25/2.0	447	1318	20	6900	650	TT

BIAS OFF-THE-ROAD TIRES TREAD PATTERN AND SIZE



BIAS OFF-THE-ROAD TIRES TREAD PATTERN AND SIZE

Loader and Dozer Service	42-46
Grader Service	47-48
Underground Mine Service	49-51
Industrial and Port Service	52-52
Sand Service	53-53
Roller Service	54-55
Rigid Dump Trucks Service	56-57

Loader and Dozer Service

LL25 E-3/L-3 Bias



- Strong tire casing offers strength needed in a loader application
- Suitable for rocky or gravel surface in mines, quarries and construction sites
- Excellent performance and maneuverability on wet, soft or muddy surface

Size	Ply rating	TRA Code	Rim	Section Width (mm)	Overall Diameter (mm)	Tread Depth (mm)	10km/h		50km/h		Type
							Load Capacity (kg)	Inflation Pressure (kPa)	Load Capacity (kg)	Inflation Pressure (kPa)	
16/70-20	14	L-3	13(SDC)	410	1075	17	5150	450	2900	350	TT
15.5-25	12	E-3/L-3	12.00/1.3	395	1275	25	5600	400	3250	250	TL
	12	E-3/L-3	14.00/1.5	445	1350	25.5	6150	350	3650	225	TL/TT
17.5-25	16	E-3/L-3	14.00/1.5	445	1350	25.5	7300	475	4250	300	TL/TT
	20	E-3/L-3	14.00/1.5	445	1350	25.5	8250	575	5000	400	TL/TT
20.5-25	28	E-3/L-3	14.00/1.5	445	1350	25.5	10300	825	6150	550	TT
	16	E-3/L-3	17.00/2.0	520	1490	28.5	8250	350	5450	275	TL/TT
	20	E-3/L-3	17.00/2.0	520	1490	28.5	9500	450	6000	325	TL/TT
23.5-25	24	E-3/L-3	17.00/2.0	520	1490	28.5	10300	525	6700	400	TL/TT
	28	E-3/L-3	17.00/2.0	520	1490	28.5	11500	625	7500	475	TT
	16	E-3/L-3	19.50/2.5	595	1615	31.5	9500	300	6150	225	TL/TT
26.5-25	18	E-3/L-3	19.50/2.5	595	1615	31.5	10500	350	6700	275	TT
	20	E-3/L-3	19.50/2.5	595	1615	31.5	10900	375	7300	300	TL/TT
	24	E-3/L-3	19.50/2.5	595	1615	31.5	12500	475	8000	350	TL/TT
29.5-25	20	E-3/L-3	22.00/3.0	675	1750	35	13200	350	8250	250	TT
	24	E-3/L-3	22.00/3.0	675	1750	35	14000	400	9250	300	TL/TT
	28	E-3/L-3	22.00/3.0	675	1750	35	15500	475	10000	350	TL/TT
NEW	32	E-3/L-3	22.00/3.0	675	1750	35	17000	550	11200	425	TL/TT
	36	E-3/L-3	22.00/3.0	675	1750	35	20000	725	—	—	TT
NEW	28	E-3/L-3	25.00/3.5	750	1875	40	17500	425	11500	325	TL
	42	E-3/L-3	25.00/3.5	750	1875	40	22600	600	—	—	TL



LL25 E-3/L-3 E-3/L-3



- Strong tire casing offers strength needed in a loader application
- Suitable for rocky or gravel surface in mines, quarries and construction sites
- Excellent performance and maneuverability on wet, soft or muddy surface

Size	Ply Rating	TRA Code	Rim	Section Width (mm)	Overall Diameter (mm)	Tread Depth (mm)	10km/h		50km/h		Type
							Load Capacity (kg)	Inflation Pressure (kPa)	Load Capacity (kg)	Inflation Pressure (kPa)	
NEW 17.5-25	12	E-3/L-3	14.00/1.5	445	1350	25.5	6150	350	3650	225	TT
	16	E-3/L-3	14.00/1.5	445	1350	25.5	7300	475	4250	300	TT
	16	E-3/L-3	19.50/2.5	595	1615	30.0	9500	300	6150	225	TT
NEW 23.5-25	18	E-3/L-3	19.50/2.5	595	1615	30.0	10500	350	6700	275	TT
	20	E-3/L-3	19.50/2.5	595	1615	30.0	10900	375	7300	300	TT/TL
	24	E-3/L-3	19.50/2.5	595	1615	30.0	12500	475	8000	350	TT/TL
	28	E-3/L-3	19.50/2.5	595	1615	30.0	13600	550	8750	400	TT/TL
	32	E-3/L-3	19.50/2.5	595	1615	30.0	14500	625	9750	475	TT/TL



LL306 E-3/L-3 Bias



- Strong nylon construction provides superior load capacity
- The non-directional tread design provides maximum traction
- Optimized tread pattern design ensures lower tire noise

Size	Ply Rating	TRA Code	Rim	Section Width (mm)	Overall Diameter (mm)	Tread Depth (mm)	10km/h		50km/h		Type
							Load Capacity (kg)	Inflation Pressure (kPa)	Load Capacity (kg)	Inflation Pressure (kPa)	
23.5-25	16	E-3/L-3	19.50/2.5	595	1615	30	9500	300	6150	225	TT
	20	E-3/L-3	19.50/2.5	595	1615	30	10900	375	7300	300	TT



LL306+

Specially designed for low-temperature working conditions!



E-3/L-3

- Strong nylon construction provides superior load capacity
- Special cold-resistant tread compound makes it suitable for working in low-temperature environments

Size	Ply Rating	TRA Code	Rim	Section Width (mm)	Overall Diameter (mm)	Tread Depth (mm)	10km/h		50km/h		Type
							Load Capacity (kg)	Inflation Pressure (kPa)	Load Capacity (kg)	Inflation Pressure (kPa)	
23.5-25	20	E-3/L-3	19.50/2.5	595	1615	30	10900	375	7300	300	TT



LL136

E-3/L-3 Bias



- Strong tire casing offers strength needed in a loader application
- Suitable for rocky or gravel surface in mines, quarries and construction sites
- Excellent performance and maneuverability on wet, soft or muddy surface

Size	Ply Rating	TRA Code	Rim	Section Width (mm)	Overall Diameter (mm)	Tread Depth (mm)	10km/h		50km/h		Type
							Load Capacity (kg)	Inflation Pressure (kPa)	Load Capacity (kg)	Inflation Pressure (kPa)	
17.5-25	12	E-3/L-3	14.00/1.5	445	1350	25.5	6150	350	3650	225	TT
23.5-25	16	E-3/L-3	19.50/2.5	595	1615	31.5	9500	300	6150	225	TT
	18	E-3/L-3	19.50/2.5	595	1615	31.5	10500	350	6700	275	TT



L301

E-3/L-3 Bias



- Rugged tread design for superior cut protection
- L3+ tread depth design enhances wearing life
- Special tear resistant resin application enhances the cutting resistance of the tread

Size	Ply Rating	TRA Code	Rim	Section Width (mm)	Overall Diameter (mm)	Tread Depth (mm)	10km/h		50km/h		Type
							Load Capacity (kg)	Inflation Pressure (kPa)	Load Capacity (kg)	Inflation Pressure (kPa)	
17.5-25	12	L-3+	14.00/1.5	445	1350	36	6150	350	3650	225	TT
	16	L-3+	19.50/2.5	595	1615	45	9500	300	6150	225	TT
	18	L-3+	19.50/2.5	595	1615	45	10500	350	6700	275	TT
23.5-25	20	L-3+	19.50/2.5	595	1615	45	10900	375	7300	300	TT
	24	L-3+	19.50/2.5	595	1615	45	12500	475	8000	350	TT
	28	L-3+	19.50/2.5	595	1615	45	13600	550	8750	400	TT



LL26

E-3 Bias



- Classic non-directional tread pattern design, suitable for variety of road conditions
- Special cold-resistant tread compound meets the need of low-temperature working conditions
- Mixed tread compound design, balancing wear and cold resistance

Size	Ply Rating	TRA Code	Rim	Section Width (mm)	Overall Diameter (mm)	Tread Depth (mm)	10km/h		50km/h		Type
							Load Capacity (kg)	Inflation Pressure (kPa)	Load Capacity (kg)	Inflation Pressure (kPa)	
18.00-25	16	E-3	13.00/2.5	500	1615	30	10000	375	5600	275	TT



E-3/L-3

E-3/L-3



- Solid centerline tread pattern provides excellent cut resistance, smooth ride and extended wear
- Non-directional tread pattern design provides all-round traction and wear resistance
- Aggressive lug design provides premium performance in harsh conditions

Size	Ply Rating	TRA Code	Rim	Section Width (mm)	Overall Diameter (mm)	Tread Depth (mm)	10km/h		50km/h		Type
							Load Capacity (kg)	Inflation Pressure (kPa)	Load Capacity (kg)	Inflation Pressure (kPa)	
29.5-29	28	E-3/L-3	25.00/3.5	750	1975	40	19000	425	12100	325	TL



LL55

E-3/L-3 Bias



- Deeper tread depth provides excellent wear resistance and longer service life
- Multiple rubber and reinforced tread compounds to meet complex operating environments
- Directional tread pattern for excellent power transfer in forward operation

Size	Ply Rating	TRA Code	Rim	Section Width (mm)	Overall Diameter (mm)	Tread Depth (mm)	10km/h		50km/h		Type
							Load Capacity (kg)	Inflation Pressure (kPa)	Load Capacity (kg)	Inflation Pressure (kPa)	
16/70-20	10	L-3	13(SDC)	410	1075	20	—	—	2400	250	TT
	14	L-3	13(SDC)	410	1075	20	5150	450	—	—	TT



L302

E-3/L-3 Bias



- Suitable for rocky or gravel surface in mines, quarries and construction sites
- Excellent performance and maneuverability on wet, soft or muddy surface
- Multiple rubber and reinforced tread compounds to meet complex operating environments

Size	Ply Rating	TRA Code	Rim	Section Width (mm)	Overall Diameter (mm)	Tread Depth (mm)	10km/h		Type
							Load Capacity (kg)	Inflation Pressure (kPa)	
20.5/70-16	16	L-3	10.00(SDC)	342	906	17	1600	280	TT



G-2

G-2 Bias



- 45° tread pattern design provides superior traction
- Heavy tire casing offers strength needed in a Grader application
- Special tear-resistant resin application enhances the cutting resistance of the tread

Size	Ply Rating	TRA Code	Rim	Section Width (mm)	Overall Diameter (mm)	Tread Depth (mm)	10km/h		40km/h		Type
							Load Capacity (kg)	Inflation Pressure (kPa)	Load Capacity (kg)	Inflation Pressure (kPa)	
13.00-24 TG	12	G-2	8.00TG	335	1280	24	5600	450	2725	300	TL
	18	G-2	8.00TG	335	1280	24	6700	675	3500	450	TL
14.00-24 TG	12	G-2	8.00TG	360	1350	24	6300	425	3075	275	TL
	16	G-2	8.00TG	360	1350	24	7300	550	3650	350	TT/TL



LL25

G-2 Bias



- Heavy tire casing offers strength needed in a Grader application
- Suitable for rocky or gravel surface in mines, quarries and construction sites

Size	Ply Rating	TRA Code	Rim	Section Width (mm)	Overall Diameter (mm)	Tread Depth (mm)	10km/h		40km/h		Type
							Load Capacity (kg)	Inflation Pressure (kPa)	Load Capacity (kg)	Inflation Pressure (kPa)	
14.00-24TG	16	G-2	8.00TG	360	1350	25	7300	550	3650	350	TT



LG201

G-2 Bias



GRADER SERVICE

- Special tread lugs are tapered for greater traction and self-cleaning
- Designed for good lateral traction, long wear and smooth ride
- Heavy tire casing offers strength needed in a Grader application

Size	Ply Rating	TRA Code	Rim	Section Width (mm)	Overall Diameter (mm)	Tread Depth (mm)	10km/h		40km/h		Type
							Load Capacity (kg)	Inflation Pressure (kPa)	Load Capacity (kg)	Inflation Pressure (kPa)	
16.00-24 TG	12	12	11.25/2.5	430	1490	28.5	—	—	3650	225	TT
	16	16	11.25/2.5	430	1490	28.5	—	—	4000	275	TT
	20	20	11.25/2.5	430	1490	28.5	—	—	4500	325	TT



E-2/L-2

E-2/L-2 Bias



GRADER SERVICE

- Precision angled bars maximize traction in soft soil
- Open shoulder grooves are self-cleaning for excellent traction and less slipping
- Directional tread pattern for excellent power transfer in forward operation

Size	Ply Rating	TRA Code	Rim	Section Width (mm)	Overall Diameter (mm)	Tread Depth (mm)	10km/h		50km/h		Type
							Load Capacity (kg)	Inflation Pressure (kPa)	Load Capacity (kg)	Inflation Pressure (kPa)	
15.5-25	12	E-2/L-2	12.00/1.3	395	1275	24	5600	400	3250	250	TL
	12	E-2/L-2	14.00/1.5	445	1350	25.5	6150	350	3650	225	TT/TL
17.5-25	16	E-2/L-2	14.00/1.5	445	1350	25.5	7300	475	4250	300	TT/TL
	24	E-2/L-2	14.00/1.5	445	1350	25.5	9250	700	5600	475	TT
20.5-25	16	E-2/L-2	17.00/2.0	520	1490	28.5	8250	350	5450	275	TL
	16	E-2/L-2	19.50/2.5	595	1615	31.5	9500	300	6150	225	TT/TL
23.5-25	20	E-2/L-2	19.50/2.5	595	1615	31.5	10900	375	7300	300	TT
	24	E-2/L-2	19.50/2.5	595	1615	31.5	12500	475	8000	350	TT



Underground Mine Service

TM401

E-3/E-4 Bias



UNDERGROUND MINE SERVICE

- Rugged tread design provides traction and added cut protection
- Underground dedicated standard tread compound, balancing heat and cutting resistance
- Special rubber compound protects against sidewall damage

Size	Ply Rating	TRA Code	Rim	Section Width (mm)	Overall Diameter (mm)	Tread Depth (mm)	10km/h		Type
							Load Capacity (kg)	Inflation Pressure (kPa)	
10.00-20	18	E-3	7.5	278	1073	32	3900	910	TT
12.00-20	20	E-3	8.5	315	1175	32	6150	830	TT
14.00-24	28	E-4	10.0	375	1420	53	13500	1000	TT
16.00-25	36	E-4	11.25/2.0	430	1550	65	13600	975	TL



LL42

E-3 Bias



UNDERGROUND MINE SERVICE

- Rugged tread design provides traction and added cut protection
- Underground dedicated standard tread compound, balancing heat and cutting resistance

Size	Ply Rating	TRA Code	Rim	Section Width (mm)	Overall Diameter (mm)	Tread Depth (mm)	10km/h		Type
							Load Capacity (kg)	Inflation Pressure (kPa)	
14.00-24	28	E-3	10.0	375	1370	27	10000	925	TT



LHD PREMIUM

L-4S/L-5S Bias



- Smooth tread design meets severe road conditions
- Excellent performance in hard rock underground mines
- Extra heavy sidewall design resists cuts and snags

Size	Ply Rating	TRA Code	Rim	Section Width (mm)	Overall Diameter (mm)	Tread Depth (mm)	10km/h		Type
							Load Capacity (kg)	Inflation Pressure (kPa)	
10.00-20	16	L-4S	7.5	278	1073	30	3535	770	TT
12.00-24	20	L-5S	8.5	315	1260	45	6900	825	TT
	20	L-5S	14.00/1.5	445	1400	65	8250	575	TT
17.5-25	24	L-5S	14.00/1.5	445	1400	65	9250	700	TT
	32	L-5S	14.00/1.5	445	1400	65	11700	830	TT



LSM401

L-4S Bias



- Smooth tread design eliminates lug tearing for longer wear
- Excellent performance in hard rock underground mines
- Special tear-resistant resin application enhances the cutting resistance of the tread

Size	Ply Rating	TRA Code	Rim	Section Width (mm)	Overall Diameter (mm)	Tread Depth (mm)	10km/h		Type
							Load Capacity (kg)	Inflation Pressure (kPa)	
10.00-20	14	L-4S	7.5	278	1073	35	3260	670	TT
	16	L-4S	7.5	278	1073	35	3535	770	TT
10.00-20	14	L-4S+	7.5	278	1073	45	3260	670	TT
	16	L-4S+	7.5	278	1073	45	3535	770	TT
12.00-24	20	L-4S	8.5	315	1275	40	6900	825	TT
	24	L-4S	8.5	315	1275	40	7500	975	TT



LSM402

L-5S/L-5S+ Bias



- Special tear-resistant resin application enhances the cutting resistance of the tread
- Excellent performance in hard rock underground mines
- Extra heavy sidewall design resists cuts and snags

Size	Ply Rating	TRA Code	Rim	Section Width (mm)	Overall Diameter (mm)	Tread Depth (mm)	10km/h		Type
							Load Capacity (kg)	Inflation Pressure (kPa)	
9.00-20	14	L-5S	7.0	255	1045	35	4375	725	TT
	16	L-5S	7.0	255	1045	35	4750	825	TT
10.00-20	14	L-5S	7.5	278	1073	45	3260	670	TT
	16	L-5S	7.5	278	1073	45	3535	770	TT
12.00-20	18	L-5S	8.5	315	1175	60	5800	775	TT
	20	L-5S	8.5	315	1175	60	6150	830	TT
12.00-24	16	L-5S	8.5	315	1275	55	6150	675	TT
	18	L-5S	8.5	315	1275	55	6500	750	TT
	20	L-5S	8.5	315	1275	55	6900	825	TT
	24	L-5S	8.5	315	1275	55	7500	975	TT
14.00-24	28	L-5S	10.0	375	1420	65	10000	930	TT
	32	L-5S	10.0	375	1420	65	10900	1050	TT
16.00-25	32	L-5S	11.25/2.0	430	1550	75	12500	875	TL
	20	L-5S+	14.00/1.5	445	1400	75	8250	575	TT
17.5-25	24	L-5S+	14.00/1.5	445	1400	75	9250	700	TT/TL
	32	L-5S+	14.00/1.5	445	1400	75	11700	830	TT/TL
20.5-25	32	L-5S	17.00/2.0	520	1550	70	11500	625	TL
23.5-25	32	L-5S	19.50/2.5	595	1675	80	13600	550	TL
	32	L-5S	13.00/2.5	500	1675	85	15000	750	TL
18.00-25	40	L-5S	13.00/2.5	500	1675	85	17000	950	TL
	36	L-5S	22.00/3.0	675	1800	85	18000	600	TL
26.5-25	36	L-5S	22.00/3.0	675	1800	85	18000	600	TL
	36	L-5S+	22.00/3.0	675	1800	95	18000	600	TL



LSM502

L-5S Bias



- Smooth tread design eliminates lug tearing for longer wear
- Excellent performance in hard rock underground mines
- Extra heavy sidewall resists cuts and snags

Size	Ply Rating	TRA Code	Rim	Section Width (mm)	Overall Diameter (mm)	Tread Depth (mm)	10km/h		Type
							Load Capacity (kg)	Inflation Pressure (kPa)	
12.00-24	24	L-5S	8.5	315	1275	65	7500	975	TT
17.5-25	32	L-5S	14.00/1.5	445	1400	75	11700	830	TT



Industrial and Port Service

LP401

IND-4 Bias



INDUSTRIAL AND PORT SERVICE

- Reinforced bead and sidewall provides exceptional durability
- Special tread compound enables less heat generation and improve wear resistance
- Optimal rubber-to-void ratio provides better stability while deeper tread depths enhance traction

Size	Ply Rating	TRA Code	Rim	Section Width (mm)	Overall Diameter (mm)	Tread Depth (mm)	5km/h		10km/h		Type
							Load Capacity (kg)	Inflation Pressure (kPa)	Load Capacity (kg)	Inflation Pressure (kPa)	
12.00-24	24	IND-4	8.5	315	1245	40	11000	1000	10100	1000	TT
14.00-24	28	IND-4	10.0	375	1420	53	14500	1000	13500	1000	TT
16.00-25	36	IND-4	11.25/2.0	430	1550	65	—	—	13600	975	TL
18.00-25	40	IND-4	13.00/2.5	500	1675	65	24600	1000	22900	1000	TL



LP402

IND-3 Bias



INDUSTRIAL AND PORT SERVICE

- Reinforced bead and sidewall area provide exceptional durability
- Special tread compound enables less heat generation and improve wear resistance
- Optimal rubber-to-void ratio provides better stability

Size	Ply Rating	TRA Code	Rim	Section Width (mm)	Overall Diameter (mm)	Tread Depth (mm)	5km/h		10km/h		Type
							Load Capacity (kg)	Inflation Pressure (kPa)	Load Capacity (kg)	Inflation Pressure (kPa)	
18.00-25	44	IND-3	13.00/2.5	500	1615	44	26100	1000	24300	1000	TL
21.00-25	40	IND-3	15.00/3.0	570	1750	44	29310	1000	27290	1000	TL



Sand Service

LD701

E-7 Bias



SAND SERVICE

- Shallow tread depth provides excellent heat dissipation
- Designed for operating on desert or soft ground
- Rib design provides excellent steering stability and improved lateral traction

Size	Ply Rating	TRA Code	Rim	Section Width (mm)	Overall Diameter (mm)	Tread Depth (mm)	50km/h		Type
							Load Capacity (kg)	Inflation Pressure (kPa)	
18-20	14	E-7	14.00T	455	1090	16	4625	360	TT/TL
20-20	16	E-7	14.00T	505	1180	17	6000	360	TL
22-20	14	E-7	17.0	555	1075	18	4125	280	TL





LC101

C-1 Bias



- Wide and smooth riding tread allows much even pressure on road
- Special tread compound provides good resistance to oily chemicals

Size	Ply Rating	TRA Code	Rim	Section Width (mm)	Overall Diameter (mm)	Tread Depth (mm)	10km/h		Type
							Load Capacity (kg)	Inflation Pressure (kPa)	
13/80-20	16	C-1	8.5	325	1045	—	5450	800	TT



LL66

C-1 Bias



- Special tread compound provides good resistance to oily chemicals
- Smooth tread assures better pressure distribution

Size	Ply Rating	TRA Code	Rim	Section Width (mm)	Overall Diameter (mm)	Tread Depth (mm)	10km/h		Type
							Load Capacity (kg)	Inflation Pressure (kPa)	
7.50-16	14	C-1	6.00G	215	810	—	2390	700	TT
9.00-20	14	C-1	7.0	255	1015	—	4375	725	TT



LL308

E-7



- Unique tread pattern design provides optimal passability
- Specially designed tread compound ensures excellent cutting resistance

Size	Ply Rating	TRA Code	Rim	Section Width (mm)	Overall Diameter (mm)	Tread Depth (mm)	10km/h		Type
							Load Capacity (kg)	Inflation Pressure (kPa)	
23.1-26	12	E-7	DW20	595	1500	15	5150	200	TT/TL
	16	E-7	DW20	595	1500	15	6150	260	TT/TL



Rigid Dump Trucks Service



LL25

E-3 Bias



RIGID DUMP TRUCKS SERVICE

- Suitable for rocky or gravel surface in mines and quarries
- Specially designed tread compound ensures excellent cutting resistance

Size	Ply Rating	TRA Code	Rim	Section Width (mm)	Overall Diameter (mm)	Tread Depth (mm)	10km/h		50km/h		Type
							Load Capacity (kg)	Inflation Pressure (kPa)	Load Capacity (kg)	Inflation Pressure (kPa)	
16.00-25	28	E-3	11.25/2.0	430	1495	28.5	11500	750	6700	575	TT/TL
	32	E-3	11.25/2.0	430	1495	28.5	12500	875	7300	650	TT/TL



LL56(CR)

E-3 Bias



RIGID DUMP TRUCKS SERVICE

- Classic undirected pattern design, suitable for a variety of road conditions
- Special cold-resistant formula design meet the needs of low-temperature environment

Size	Ply Rating	TRA Code	Rim	Section Width (mm)	Overall Diameter (mm)	Tread Depth (mm)	10km/h		50km/h		Type
							Load Capacity (kg)	Inflation Pressure (kPa)	Load Capacity (kg)	Inflation Pressure (kPa)	
18.00-25	32	E-3	13.00/2.5	500	1615	30	15000	750	8750	575	TT
	36	E-3	13.00/2.5	500	1615	30	16000	850	9250	625	TT
	40	E-3	13.00/2.5	500	1615	30	17000	950	9750	700	TT



LL26

E-3 Bias




RIGID DUMP TRUCKS SERVICE

- Classic undirected pattern design, suitable for a variety of road conditions
- Special cold-resistant formula design meet the needs of low-temperature environment

Size	Ply Rating	TRA Code	Rim	Section Width (mm)	Overall Diameter (mm)	Tread Depth (mm)	10km/h		50km/h		Type
							Load Capacity (kg)	Inflation Pressure (kPa)	Load Capacity (kg)	Inflation Pressure (kPa)	
18.00-25	32	E-3	13.00/2.5	500	1615	30	15000	750	8750	575	TT
	36	E-3	13.00/2.5	500	1615	30	16000	850	9250	625	TT
	40	E-3	13.00/2.5	500	1615	30	17000	950	9750	700	TT




RADIAL AGRICULTURE TIRES TREAD PATTERN AND SIZE

A large combine harvester is shown in a field of golden grain, likely wheat or corn, under a clear blue sky. The harvester is positioned in the middle ground, moving through the field. The foreground is filled with the heads of the grain, and the background shows a clear blue sky with a few wispy clouds. The overall scene is bright and sunny, suggesting a clear day during harvest.

RADIAL AGRICULTURE TIRES TREAD PATTERN AND SIZE

Tractor Service	60-63
Harvester Service	64-65
Sprayer and Row Crop Service	66-66
Floater and Implement Service	67-68
Industrial Service	69-69

A decorative horizontal line at the bottom of the page, consisting of a series of parallel diagonal lines in a light blue color, extending across the width of the page.



LR861

R-1/R-1W



- Deep lugs, low slip and optimized rubber compounds help reduce wear for exceptionally long tire life
- Good self-cleaning properties help keep the tread pattern free of mud, resulting in less slip, even in difficult conditions
- Multiple types of rubber are designed with tread compound, providing excellent wear and fatigue resistance

Size	Load Index	Speed Symbols	IND Code	Rim	Section Width (mm)	Overall Diameter (mm)	Load Capacity (kg)	Inflation Pressure (kPa)	Tread Depth (mm)	Type
280/85R24	115/112	A8/B	R-1W	W9 W10	282	1086	1215	160	39	TL
320/85R24	122/119	A8/B	R-1W	W9 W10 W11	319	1154	1500	160	41	TL
320/85R28	124/121	A8/B	R-1W	W9 W10 W11	319	1255	1600	160	41	TL
320/85R32	142/139	A8/B	R-1W	W9 W10 W11	319	1357	2650	400	41	TL
320/85R36	128/125	A8/B	R-1W	W9 W10 W11	319	1458	1800	160	41	TL
340/85R24	125/122	A8/B	R-1W	W11 W12	343	1188	1650	160	42	TL
340/85R28	127/124	A8/B	R-1W	W11 W12	343	1289	1750	160	42	TL
340/85R32	142/139	A8/B	R-1W	W11 W12	343	1391	2650	360	42	TL
340/85R36	132/129	A8/B	R-1W	W11 W12	343	1492	2000	160	42	TL
340/85R38	133/130	A8/B	R-1W	W11 W12	343	1543	2060	160	42	TL
380/85R24	131/128	A8/B	R-1W	W11 W12 W13	380	1256	1950	160	45	TL
380/85R28	133/130	A8/B	R-1W	W11 W12 W13	380	1357	2060	160	45	TL
380/85R30	135/132	A8/B	R-1W	W11 W12 W13	380	1408	2180	160	45	TL
380/85R34	147/147	A8/B	R-1W	W11 W12 W13	380	1510	3075	300	45	TL
420/85R24	137/134	A8/B	R-1W	W13 W14L W15L	418	1324	2300	160	48	TL
420/85R28	139/136	A8/B	R-1W	W13 W14L W15L	418	1425	2430	160	48	TL
	144/144	A8/B	R-1W	W13 W14L W15L	418	1425	2800	240	48	TL



Size	Load Index	Speed Symbols	IND Code	Rim	Section Width (mm)	Overall Diameter (mm)	Load Capacity (kg)	Inflation Pressure (kPa)	Tread Depth (mm)	Type
420/85R30	140/137	A8/B	R-1W	W13 W14L W15L	418	1476	2500	160	48	TL
	145/145	A8/B	R-1W	W13 W14L W15L	418	1476	2900	240	48	TL
420/85R34	142/139	A8/B	R-1W	W13 W14L W15L	418	1578	2650	160	48	TL
420/85R38	144/141	A8/B	R-1W	W13 W14L W15L	418	1679	2800	160	48	TL
460/85R30	145/142	A8/B	R-1W	W14L W15L W16L	455	1544	2900	160	51	TL
460/85R34	147/144	A8/B	R-1W	W14L W15L W16L	455	1646	3075	160	51	TL
460/85R38	149/146	A8/B	R-1W	W14L W15L W16L	455	1747	3250	160	51	TL
460/85R42	150/147	A8/B	R-1W	W14L W15L W16L	455	1849	3350	160	51	TL
460/85R46	152/149	A8/B	R-1W	W14L	464	1943	3550	160	51	TL
	158/155	A8/B	R-1W	W14L	464	1943	4250	240	51	TL
520/85R38	155/152	A8/B	R-1W	DW16L DW18L	516	1849	3875	160	54	TL
	160/160	A8/B	R-1W	DW16L DW18L	516	1849	4500	240	54	TL
520/85R42	157/154	A8/B	R-1W	DW16L DW18L	516	1951	4125	160	54	TL
	167/164	A8/B	R-1W	DW16L DW18L	516	1951	5450	320	54	TL
420/80R46	151/148	A8/B	R-1W	W12 W13	418	1840	3450	240	47	TL
480/80R42	151/151	A8/B	R-1W	DD16L DW16L W16L DW16A W16A	479	1835	3450	160	49	TL
	156/156	A8/B	R-1W	DD16L DW16L W16L DW16A W16A	479	1835	4000	240	49	TL
480/80R46	158/158	A8/B	R-1W	DD16L DW16L W16L DW16A W16A	479	1936	4250	240	49	TL
420/90R30	142/139	A8/B	R-1W	DW13 W14L	418	1518	2650	160	48	TL
	147/144	A8/B	R-1W	DW13 W14L	418	1518	3075	240	48	TL
320/90R46	146/143	A8/B	R-1	W9 W10 W11	319	1744	3000	320	37	TL

Note: Bolded is recommended RIM

LR700

R-1W



- Outstanding long tire life thanks to the use of a wear-resistant tread compound
- Super flat tread and large footprint help reduce soil compaction



Size	Load Index	Speed Symbols	IND Code	Rim	Section Width (mm)	Overall Diameter (mm)	Load Capacity (kg)	Inflation Pressure (kPa)	Tread Depth (mm)	Type
NEW 240/70R16	104/104	A8/B	R-1W	W8 W8L W9	244	742	900	240	27	TL
NEW 260/70R16	109/109	A8/B	R-1W	W8 W8L W9	258	770	1030	240	29	TL
NEW 280/70R16	112/112	A8/B	R-1W	W8 W8L W9 W10	282	798	1120	240	30	TL
280/70R20	116/113	A8/B	R-1W	W8 W8L W9 W10	282	900	1250	240	35.5	TL
NEW 320/70R20	113/113	A8/B	R-1W	W9 W10 W11	319	982	1150	160	36	TL
NEW 320/70R24	116/116	A8/B	R-1W	W9 W10 W11	319	1094	1250	160	38	TL
360/70R24	122/119	A8/B	R-1W	W10 W11 W12	357	1152	1500	160	42	TL
	127/124	A8/B	R-1W	W10 W11 W12	357	1152	1750	240	42	TL
380/70R24	125/125	A8/B	R-1W	W11 W12 W13	380	1190	1650	160	43	TL
420/70R24	130/127	A8/B	R-1W	W12 W13 W14L	418	1248	1900	160	44	TL
	136/133	A8/B	R-1W	W12 W13 W14L	418	1248	2240	240	44	TL
420/70R28	133/130	A8/B	R-1W	W12 W13 W14L	418	1349	2060	160	44	TL
	139/136	A8/B	R-1W	W12 W13 W14L	418	1349	2430	240	44	TL
480/70R24	138/135	A8/B	R-1W	W14L W15L W16L	479	1316	2360	160	47	TL
	140/137	A8/B	R-1W	W14L W15L W16L	479	1421	2500	160	47	TL
480/70R28	145/142	A8/B	R-1W	W14L W15L W16L	479	1421	2900	240	47	TL
	151/148	A8/B	R-1W	W14L W15L W16L	479	1421	3450	320	47	TL
480/70R34	143/143	A8/B	R-1W	W14L W15L W16L	479	1580	2725	160	47	TL
480/70R38	145/142	A8/B	R-1W	W14L W15L W16L	479	1681	2900	160	47	TL
520/70R38	150/150	A8/B	R-1W	W15L W16L W18L	516	1749	3350	160	48	TL
	155/155	A8/B	R-1W	W18L	577	1827	3875	160	50	TL
580/70R38	170/167	A8/B	R-1W	W18L	577	1827	6000	280	50	TL

Note: Bolded is recommended RIM

LR650

R-1W



- The tread pattern ensures excellent self-cleaning
- Maximum traction and outstanding productivity thanks to a large contact patch
- Capable of comfortably working at speeds up to 65km/h



Size	Load Index	Speed Symbols	IND Code	Rim	Section Width (mm)	Overall Diameter (mm)	Load Capacity (kg)	Inflation Pressure (kPa)	Tread Depth (mm)	Type
440/65R24	128/131	D/A8	R-1W	W13 W14L W15L	441	1182	1800	160	45	TL
440/65R28	131/134	D/A8	R-1W	W13 W14L W15L	441	1283	1950	160	45	TL
480/65R24	133/136	D/A8	R-1W	W14L W15L	479	1234	2060	160	46	TL
480/65R28	136/139	D/A8	R-1W	W14L W15L	479	1335	2240	160	46	TL
540/65R24	140/143	D/A8	R-1W	W16L W18L	550	1312	2500	160	48	TL
540/65R28	142/145	D/A8	R-1W	W16L W18L	550	1413	2650	160	48	TL
540/65R30	150/153	D/A8	R-1W	W16L W18L	550	1464	3350	240	48	TL
540/65R34	145/148	D/A8	R-1W	W16L W18L	550	1566	2900	160	48	TL
540/65R38	153/156	D/A8	R-1W	W16L W18L	550	1667	3650	240	48	TL
600/65R28	147/150	D/A8	R-1W	DW20B W18L	591	1491	3075	160	52	TL
600/65R34	157/160	D/A8	R-1W	DW20B W18L	591	1644	4125	240	52	TL
600/65R38	153/156	D/A8	R-1W	DW20B W18L	591	1745	3650	160	52	TL
650/65R38	157/160	D/A8	R-1W	DW20B	645	1811	4125	160	56	TL
650/65R42	165/168	D/A8	R-1W	DW20B	645	1913	5150	240	56	TL
710/70R38	166/169	D/A8	R-1W	DW23B	716	1959	5300	160	57	TL
	168/171	D/A8	R-1W	DW23B	716	2061	5600	160	57	TL
710/70R42	173/176	D/A8	R-1W	DW23B	716	2061	6500	240	57	TL

Note: Bolded is recommended RIM



LR7000

R-1W



HARVESTER SERVICE

- A flat stable tread spreads the load evenly across the footprint, helping to minimize soil compaction by providing excellent ground pressure distribution
- Extremely economical thanks to very good traction and low-wear tread compound
- Long tire life due to optimized tread pattern design and high resistance to damage

Size	Load Index	Speed Symbols	IND Code	Rim	Section Width (mm)	Overall Diameter (mm)	Load Capacity (kg)	Inflation Pressure (kPa)	Tread Depth (mm)	Type
600/70R28	157	D	R-1W	DW18L DW20B W18L	591	1551	4125	240	52.5	TL
	161/161	A8/B	R-1W	DW18L DW20B W18L	591	1551	4625	280	52.5	TL
600/70R30	152	D	R-1W	DW18L DW20B W18L	591	1602	3550	160	52.5	TL
	158	D	R-1W	DW18L DW20B W18L	591	1602	4250	240	52.5	TL
NEW 620/70R42	172	D	R-1W	DW18L W18L DW20B	625	1935	6300	320	58	TL
650/85R38	173/176	D/A8	R-1W	DW20B DW21B DW23B	645	2071	6500	240	65	TL
600/70R34	160/163	D/A8	R-1W	DW18L DW20B W18L	601	1704	4500	240	52	TL
650/60R34	159/162	D/A8	R-1W	DW20B DW21B DW23B	645	1644	4375	240	52	TL
710/55R30	153/156	D/A8	R-1W	DW23B DW24B	706	1544	3650	160	51	TL
710/75R42	181/184	D/A8	R-1W	DW20B DW21B DW23B DW24B DW25B	706	2133	8250	320	63	TL
800/70R38	178/181	D/A8	R-1W	DW25B DW27B	798	2085	7500	240	62	TL

Note: Bolded is recommended RIM



LR8000

R-1W



HARVESTER SERVICE

- Reinforced shoulder contributes to better sidewall protection and an extended tire life
- Super flat tread and large footprint help to reduce soil compaction
- Strong but flexible casing delivers exceptional ride and comfort

Size	Load Index	Speed Symbols	IND Code	Rim	Section Width (mm)	Overall Diameter (mm)	Load Capacity (kg)	Inflation Pressure (kPa)	Tread Depth (mm)	Type
NEW 650/75R32	172/172	A8/B	R-1W	DW20B DW21B DW23B	645	1789	6300	320	59	TL
710/60R34	164/167	D/A8	R-1W	DW21B DW23B DW24B DW25B	716	1716	5000	240	58	TL
NEW 750/65R26	171/171	A8/B	R-1W	DW23B DW24B DW25B	754	1636	6150	320	50	TL
NEW 800/70R32	181/181	A8/B	R-1W	DW25B DW27B DH27B	798	1933	8250	320	57	TL
800/65R32	181/181	A8/B	R-1W	DW25B DW27B DH27B	798	1853	8250	360	58	TL

Note: Bolded is recommended RIM



SPRING ULTRA FLEX

R-1W



HARVESTER SERVICE

- Carry up to 40% more load at the same pressure versus non-VF radial tire of the same size
- Wide footprint creating broader contact area with the soil
- Reinforced structure resistant to punctures and cuts

Size	Load Index	Speed Symbols	IND Code	Rim	Section Width (mm)	Overall Diameter (mm)	Load Capacity (kg)	Inflation Pressure (kPa)	Tread Depth (mm)	Type
NEW VF 520/85R42	177	A8	R-1W	DW18L	516	1951	7300	280	52	TL
NEW VF 600/60R30	162	D	R-1W	DW20B DW21B	597	1482	4750	200	52	TL
NEW VF 900/60R32	191	A8	R-1W	DW30B	891	1893	10900	280	56	TL
NEW VF 900/60R38	193	A8	R-1W	DW30B	891	2045	11500	280	58	TL

Note: Bolded is recommended RIM





Sprayer and Row Crop Service

LR861

R-1/R-1W



SPRAYER AND ROW CROP SERVICE

- Deep lugs, low slip and optimized rubber compounds help to reduce wear for exceptional long tire life
- Good self-cleaning properties help to keep the tread pattern free of mud, resulting in less slip, even in difficult conditions

Size	Load Index	Speed Symbols	IND Code	Rim	Section Width (mm)	Overall Diameter (mm)	Load Capacity (kg)	Inflation Pressure (kPa)	Tread Depth (mm)	Type
380/90R46	157/157	A8/B	R-1W	W11 W12 W13	380	1852	4125	360	45	TL
320/90R46	146/143	A8/B	R-1	W9 W10 W11	319	1744	3000	320	37	TL

Note: Bolded is recommended RIM



LR9000

R-1W

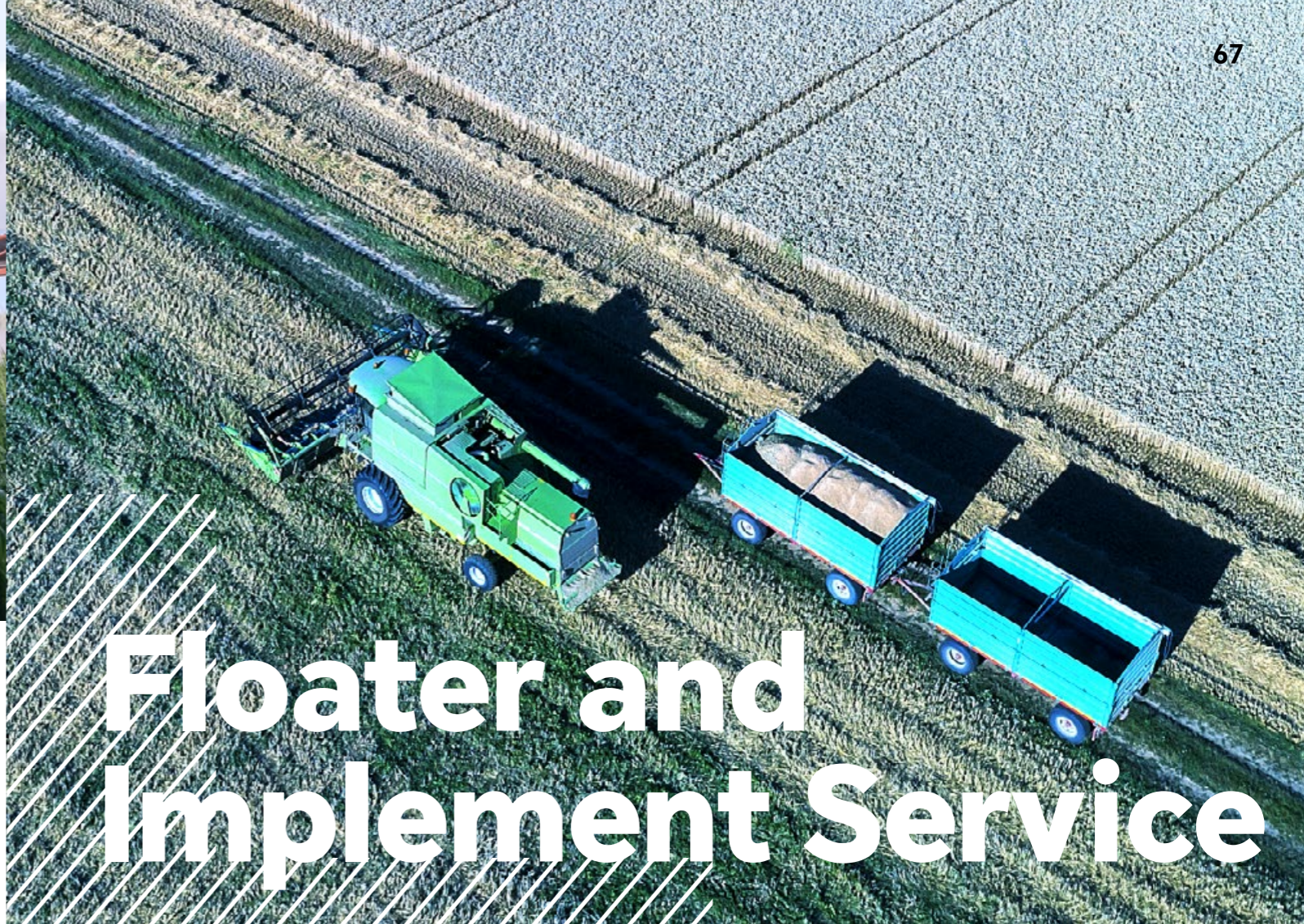


SPRAYER AND ROW CROP SERVICE

- Deep lugs provide excellent traction, better directional stability and a high level of control
- An extra-strong but super-flexible casing, which offers a large footprint and surprising ride comfort, has excellent durability to carry extra-heavy loads

Size	Load Index	Speed Symbols	IND Code	Rim	Section Width (mm)	Overall Diameter (mm)	Load Capacity (kg)	Inflation Pressure (kPa)	Tread Depth (mm)	Type
<small>NEW</small> 320/90R42	147/147	A8/B	R-1	W9 W10 W11	319	1643	3075	400	37	TL
380/90R50	160/157	A8/B	R-1W	W11 W12 W13	380	1954	4500	400	48	TL

Note: Bolded is recommended RIM



Floater and Implement Service

LBI301

I-3



FLOATER AND IMPLEMENT SERVICE

- Solid rounded shoulders increases maneuverability and reduces scrub
- Extremely economical thanks to excellent traction and low-wear tread compound
- Even distribution of ground pressure to minimize rutting and soil damage

Size	Load Index	Speed Symbols	IND Code	Rim	Section Width (mm)	Overall Diameter (mm)	Load Capacity (kg)	Inflation Pressure (kPa)	Tread Depth (mm)	Type
600/50R22.5 IMP	159	D	I-3	AG20.00	611	1172	4375	400	25	TL
650/65R30.5 IMP	176	D	I-3	AG20.00	645	1621	7100	400	32	TL
850/50R30.5 IMP	182	D	I-3	AG28.00	862	1625	8500	400	32	TL



FL300

I-3



FLOATER AND IMPLEMENT SERVICE

- With a large contact patch, this tire offers max flotation and soil protection
- Solid rounded shoulders for greater resistance to irregular wear, reduced scrub and improved maneuverability
- Steel belted design increases load capacity and resistance to impacts



Size	Load Index	Speed Symbols	IND code	Rim	Section Width (mm)	Overall Diameter (mm)	Load Capacity (kg)	Inflation Pressure (kPa)	Tread Depth (mm)	Type
NEW 500/50R17 IMP	149	D	I-3	16.00	503	932	3250	500	15	TL
500/45R22.5 IMP	146	D	I-3	AG16.00	503	1022	3000	400	21	TL
500/60R22.5 IMP	155	D	I-3	AG16.00	503	1172	3875	400	18	TL
560/45R22.5 IMP	152	D	I-3	AG16.00	543	1076	3550	400	18	TL
560/60R22.5 IMP	165	D	I-3	AG16.00	543	1244	5150	500	18	TL
580/65R22.5 IMP	166	D	I-3	AG18.00	577	1326	5300	400	21	TL
600/50R22.5 IMP	163	D	I-3	AG18.00	591	1172	4875	500	21	TL
600/55R26.5 IMP	165	D	I-3	AG20.00	591	1333	5150	400	20	TL
650/55R26.5 IMP	169	D	I-3	AG20.00	645	1389	5800	400	24	TL
650/65R26.5 IMP	174	D	I-3	AG20.00	645	1519	6700	400	24	TL
NEW 710/45R22.5 IMP	165	D	I-3	AG22.00	706	1212	5150	400	25	TL
710/50R26.5 IMP	170	D	I-3	AG24.00	727	1383	6000	400	24	TL
710/50R30.5 IMP	173	D	I-3	AG24.00	727	1485	6500	400	26	TL
NEW 750/45R26.5 IMP	170	D	I-3	AG24.00	754	1349	6000	400	25	TL
750/60R30.5 IMP	181	D	I-3	AG24.00	754	1675	8250	400	26	TL
NEW 800/45R26.5 IMP	174	D	I-3	AG26.00	808	1393	6700	400	26	TL
800/45R30.5 IMP	176	D	I-3	AG26.00	808	1495	7100	400	26	TL
NEW 850/50R30.5 IMP	182	D	I-3	AG28.00	842	1625	8500	400	27	TL



Industrial Service

LR451



INDUSTRIAL SERVICE

R-4

- Extra-deep 40° lugs provide impressive traction and excellent directional control
- Reinforced centreline undertread for tread penetration resistance

Size	Load Index	Speed Symbols	IND Code	Rim	Section Width (mm)	Overall Diameter (mm)	Load Capacity (kg)	Inflation Pressure (kPa)	Tread Depth (mm)	Type
460/70R24 IND	159/159	A8/B	R-4	DW14L DW15L DW16L	455	1254	4375	400	36	TL
500/70R24 IND	164/164	A8/B	R-4	DW16L DW15L	503	1310	5000	400	39	TL

Note: Bolded is recommended RIM



LR400



INDUSTRIAL SERVICE

R-4

- Extremely economical thanks to excellent traction and low-wear tread compound
- Outstanding grip on hard surfaces due to new block tread pattern designed for industrial applications

Size	Load Index	Speed Symbols	IND Code	Rim	Section Width (mm)	Overall Diameter (mm)	Load Capacity (kg)	Inflation Pressure (kPa)	Tread Depth (mm)	Type
500/70R24 IND	164/164	A8/B	R-4	DW16L DW15L	503	1310	5000	400	28	TL
400/70R18 IND	147/147	A8/B	R-4	13.00	404	1017	3075	400	23	TL
400/70R20 IND	149/149	A8/B	R-4	13.00	404	1068	3250	400	23	TL

Note: Bolded is recommended RIM



BIAS AGRICULTURE TIRES TREAD PATTERN AND SIZE



BIAS AGRICULTURE TIRES TREAD PATTERN AND SIZE

Tractor Service	72-79
Implement Service	80-85
Industrial Service	86-87



Tractor Service

LL31

R-1 Bias

- Longer service life
- Better grip
- Ability to withstand heavy loads



Size	Ply Rating	RIM	Section Width (mm)	Overall Diameter (mm)	Load Capacity (kg)	Inflation Pressure (kPa)	Tread Depth (mm)	Type
5.00-12	4	4.00E	145	590	280	200	22	TT
5.50-17	6	4.00E	145	750	440	250	22	TT
6.00-12	4	4.50E	165	640	335	180	22	TT
	6	4.50E	165	640	405	250	22	TT
6.00-14	8	4.50E	165	640	420	260	22	TT
	6	4.50E	165	690	450	250	20.5	TT
6.00-16	8	4.50E	165	690	685	420	20.5	TT
	6	4.50E	165	745	495	250	22	TT
7.50-16	6	5.50F	205	810	650	210	23	TT
	8	5.50F	205	810	700	240	23	TT
7.50-20	6	5.50F	205	910	760	210	24	TT
	8	5.50F	205	910	880	280	24	TT
8.3-24	6	W7	210	995	810	240	30	TT
	8	W7	210	995	920	280	30	TT
8.5-20	8	W7	210	895	880	250	30	TT
9.5-20	8	W8	240	950	955	280	30	TT

Size	Ply Rating	RIM	Section Width (mm)	Overall Diameter (mm)	Load Capacity (kg)	Inflation Pressure (kPa)	Tread Depth (mm)	Type
9.5-24	6	W8	240	1050	940	210	30	TT
	8	W8	240	1050	1110	280	30	TT
10-15	8	9.00	254	775	950	310	20	TT
11.2-24	6	W10	285	1105	950	180	35	TT
	8	W10	285	1105	1150	250	35	TT
12-38	8	DW11	330	1575	1570	140	35	TT
12.4/11-28	6	W11	315	1260	1275	170	38	TT
	8	W11	315	1260	1510	230	38	TT
14.9-24	6	W13	378	1265	1510	140	38	TT
	8	W13	378	1265	1760	180	38	TT
14.9-28	6	W13	378	1365	1610	140	38	TT
	8	W13	378	1365	1880	180	38	TT
16.9-34	8	W15L	430	1585	2380	170	37	TT
	10	W15L	430	1585	2605	200	37	TT

LL32

R-1 Bias

- Better grip
- Longer service life
- Ability to withstand heavy loads

Size	Ply Rating	RIM	Section Width (mm)	Overall Diameter (mm)	Load Capacity (kg)	Inflation Pressure (kPa)	Tread Depth (mm)	Type
5.50-16	10	4.00E	150	715	1325	530	16	TT
6.00-16	6	4.50E	165	745	495	250	18	TT
	10	4.50E	165	745	755	420	18	TT
6.50-16	10	5.00F	180	765	635	300	18	TT
	14	5.00F	180	765	815	460	18	TT
7.00-16	14	5.50F	190	785	1010	460	18	TT
7.50-16	10	5.50F	205	810	800	320	20	TT
	14	5.50F	205	810	1030	460	20	TT



TRACTOR SERVICE



LL46

R-1 Bias

- Longer service life
- Ability to withstand heavy loads
- Application of C3 curing technology to improve wear resistance

Size	Ply Rating	RIM	Section Width (mm)	Overall Diameter (mm)	Load Capacity (kg)	Inflation Pressure (kPa)	Tread Depth (mm)	Type
15-24	10	DW14	410	1330	2800	280	33	TT
16.9-28	8	W15L	430	1435	2175	170	39	TT
	10	W15L	430	1435	2380	200	39	TT
16.9-30	8	W15L	430	1485	2245	170	39	TT
	10	W15L	430	1485	2455	200	39	TT



TRACTOR SERVICE



LL37

R-1 Bias

- Better grip
- Longer service life
- Ability to withstand heavy loads

Size	Ply Rating	RIM	Section Width (mm)	Overall Diameter (mm)	Load Capacity (kg)	Inflation Pressure (kPa)	Tread Depth (mm)	Type
7.50-20	6	5.50F	205	910	760	210	24	TT
	8	5.50F	205	910	880	280	24	TT
910x205	16	5.50F	205	910	1900	690	24	TT



TRACTOR SERVICE



LBR102

R-1 Bias

- Better grip
- Ability to withstand heavy loads
- Application of C3 curing technology to improve wear resistance

Size	Ply Rating	RIM	Section Width (mm)	Overall Diameter (mm)	Load Capacity (kg)	Inflation Pressure (kPa)	Tread Depth (mm)	Type
14.9-28	8	W13	378	1365	1880	180	37	TT



TRACTOR SERVICE



LBR103

R-1 Bias



- Longer service life
- Ability to withstand heavy loads
- Application of C3 curing technology to improve wear resistance

Size	Ply Rating	RIM	Section Width (mm)	Overall Diameter (mm)	Load Capacity (kg)	Inflation Pressure (kPa)	Tread Depth (mm)	Type
23.1-26	10	DW20	587	1605	2900	140	42	TT
	12	DW20	587	1605	3250	170	42	TT
	14	DW20	587	1605	3550	190	42	TT
23.1-30	10	DW20	587	1707	3075	140	42	TT
	12	DW20	587	1707	3450	170	42	TT
	16	DW20	587	1707	4120	230	42	TT



LBR105

R-1 Bias



- Better grip
- Longer service life
- Ability to withstand heavy loads

Size	Ply Rating	RIM	Section Width (mm)	Overall Diameter (mm)	Load Capacity (kg)	Inflation Pressure (kPa)	Tread Depth (mm)	Type
9.5/10.00-28	8	W9	275	1245	1300	200	35	TT



LBR108

R-1W Bias



- Deep lugs and optimized rubber compounds help reduce wear for exceptionally long tire life
- Pattern featuring increased tread lug depth giving better traction and less slip in difficult conditions

Size	Ply Rating	RIM	Section Width (mm)	Overall Diameter (mm)	Load Capacity (kg)	Inflation Pressure (kPa)	Tread Depth (mm)	Type
8.3-20	10	W7	210	895	850	310	42	TT
9.5-24	10	W8	240	1050	1110	280	41	TT



LL71

R-2 Bias



- Better traction and braking performance
- Longer service life
- Better self-cleaning capacity

Size	Ply Rating	RIM	Section Width (mm)	Overall Diameter (mm)	Load Capacity (kg)	Inflation Pressure (kPa)	Tread Depth (mm)	Type
19.5L-24	10	17.00	495	1382	2800	170	92	TT
28L-26	14	DW25	715	1672	4245	170	100	TT



R-2

R-2 Bias



- Better traction and braking performance
- Longer service life
- Better self-cleaning capacity

Size	Ply Rating	RIM	Section Width (mm)	Overall Diameter (mm)	Load Capacity (kg)	Inflation Pressure (kPa)	Tread Depth (mm)	Type
23.1-26	12	DW20	587	1662	3610	170	100	TT



PR-1

PR-1 Bias



TRACTOR SERVICE

- New deep tread design for better wear and traction in mud
- Increased lug bracing for high load durability

Size	Ply Rating	RIM	Section Width (mm)	Overall Diameter (mm)	Load Capacity (kg)	Inflation Pressure (kPa)	Tread Depth (mm)	Type
7.50-16	8	5.50F	195	890	700	240	70	TT
8.3-20	8	W7	210	950	760	280	75	TT
9.5-24	8	W8	240	1150	1510	280	80	TT
11/12.4-28	10	W11	315	1293	2050	230	90	TT



LBPR102

PR-1 Bias



TRACTOR SERVICE

- New deep tread design for better wear and traction in mud
- Increased lug bracing for high load durability

Size	Ply Rating	RIM	Section Width (mm)	Overall Diameter (mm)	Load Capacity (kg)	Inflation Pressure (kPa)	Tread Depth (mm)	Type
6.50-16	6	5.00F	165	830	565	250	60	TT
8.3-24	8	W7	210	1050	1275	330	75	TT
11.2-24	8	W10	285	1205	1700	270	85	TT
14.9-30	10	W13	378	1415	2190	230	90	TT
11-32	8	W10	305	1460	1260	210	85	TT
16.9-34	10	W15L	430	1585	2605	200	90	TT



LL30

F-2 Bias



TRACTOR SERVICE

- Longer service life
- Better self-cleaning capacity

Size	Ply Rating	RIM	Section Width (mm)	Overall Diameter (mm)	Load Capacity (kg)	Inflation Pressure (kPa)	Tread Depth (mm)	Type
4.00-12	6	3.00D	110	535	240	360	10	TT
4.00-14	4	3.00D	110	590	270	340	10	TT
	6	3.00D	110	590	350	400	10	TT
4.00-16	6	3.00D	110	640	800	400	10	TT
4.50-14	8	3.00D	120	602	1000	450	10	TT
4.50-16	6	3.00D	122	655	615	360	10	TT
	8	3.00D	122	655	1000	450	10	TT
5.00-14	8	3.00D	130	620	500	450	12	TT
5.00-15	8	4.00E	140	665	675	450	10	TT
6.00-16	6	4.50E	165	745	495	250	13	TT
6.50-20	8	5.00F	180	860	865	420	16	TT



LBF201

F-2 Bias



TRACTOR SERVICE

- Longer service life
- Better self-cleaning capacity

Size	Ply Rating	RIM	Section Width (mm)	Overall Diameter (mm)	Load Capacity (kg)	Inflation Pressure (kPa)	Tread Depth (mm)	Type
5.50-16	6	4.00E	150	710	525	370	15	TT



Implement Service



LBI301

I-3 Bias



IMPLEMENT SERVICE

- Low ground compaction
- Puncture resistant
- Low ground pressure helps protect crops and increase yield

Size	Ply Rating	RIM	Section Width (mm)	Overall Diameter (mm)	Load Capacity (kg)	Inflation Pressure (kPa)	Tread Depth (mm)	Type
400/60-15.5 IMP	16	AG13.00	404	874	3150	400	17.5	TL
	18	AG13.00	404	874	3450	450	17.5	TL
600/50-22.5 IMP	16	AG20.00	611	1172	5770	260	25	TL
650/65-30.5 IMP	—	AG20.00	645	1621	6500	200	32	TL
850/50-30.5 IMP	—	AG28.00	862	1625	7750	200	32	TL



LBI302

I-3 Bias



IMPLEMENT SERVICE

- Outstanding traction thanks to 40° designed lugs
- Great traction due to specially developed tread pattern

Size	Ply Rating	Load Index	Speed Symbols	RIM	Section Width (mm)	Overall Diameter (mm)	Load capacity (kg)	Inflation Pressure (kPa)	Type
12.5/80-18 IMP	14	145	A6	9	318	985	2910	430	TL
	16	148	A6	9	318	985	3130	490	TL



LL2

Bias



IMPLEMENT SERVICE

- Excellent protection against punctures
- Longer service life

Size	Ply Rating	RIM	Section Width (mm)	Overall Diameter (mm)	Load Capacity (kg)	Inflation Pressure (kPa)	Tread Depth (mm)	Type
4.00-8	4	3.00D	110	425	180	340	6.5	TT
	6	3.00D	110	425	410	420	6.5	TT
	8	3.00D	110	425	700	530	6.5	TT
4.00-12	6	3.00D	112	535	240	360	7.5	TT
4.00-14	6	3.00D	112	590	350	400	8	TT
7.00-16	10	5.50F	188	760	1100	530	12	TT
	12	5.50F	188	760	1220	630	12	TT
	14	5.50F	188	760	1320	730	12	TT



LL11

Bias

- Excellent protection against punctures
- Longer service life
- Very good stability



IMPLEMENT SERVICE

Size	Ply Rating	RIM	Section Width (mm)	Overall Diameter (mm)	Load Capacity (kg)	Inflation Pressure (kPa)	Tread Depth (mm)	Type
6.50-16	10	5.50F	185	750	975	530	10	TT
	12	5.50F	185	750	1060	630	10	TT
7.00-16	10	5.50F	188	760	1100	530	12	TT
	12	5.50F	188	760	1220	630	12	TT
	14	5.50F	188	760	1320	730	12	TT



LL14

Bias

- Excellent protection against punctures
- Longer service life
- Very good stability



IMPLEMENT SERVICE

Size	Ply Rating	RIM	Section Width (mm)	Overall Diameter (mm)	Load Capacity (kg)	Inflation Pressure (kPa)	Tread Depth (mm)	Type
5.00-16	8	3.00D	130	680	1200	600	8	TT
	10	3.00D	130	680	1350	650	8	TT
5.50-16	8	4.00E	150	685	1100	470	8	TT
6.50-16	10	5.50F	185	750	975	530	10.5	TT
	12	5.50F	185	750	1060	630	10.5	TT



LL15

Bias

- Excellent protection against punctures
- Longer service life
- Very good stability



IMPLEMENT SERVICE

Size	Ply Rating	RIM	Section Width (mm)	Overall Diameter (mm)	Load Capacity (kg)	Inflation Pressure (kPa)	Tread Depth (mm)	Type
6.00-16	6	4.50E	170	730	635	320	9	TT
	8	4.50E	170	730	735	420	9	TT
	10	4.50E	170	730	860	530	9	TT
6.50-16	10	5.50F	185	750	975	530	10	TT
	12	5.50F	185	750	1060	630	10	TT
7.50-16	10	5.50F	215	805	1240	400	13	TT



LL17

Bias

- Excellent protection against punctures
- Longer service life
- Very good stability



IMPLEMENT SERVICE

Size	Ply Rating	RIM	Section Width (mm)	Overall Diameter (mm)	Load Capacity (kg)	Inflation Pressure (kPa)	Tread Depth (mm)	Type
4.50-14	8	3.00D	120	602	1000	450	8	TT



LL19

Bias

- Excellent protection against punctures
- Longer service life
- Very good stability



IMPLEMENT SERVICE

Size	Ply Rating	RIM	Section Width (mm)	Overall Diameter (mm)	Load Capacity (kg)	Inflation Pressure (kPa)	Tread Depth (mm)	Type
5.50-14	8	3.00D	158	635	595	390	9	TT



LL21

Bias

- Excellent protection against punctures
- Longer service life
- Very good stability



IMPLEMENT SERVICE



Size	Ply Rating	RIM	Section Width (mm)	Overall Diameter (mm)	Load Capacity (kg)	Inflation Pressure (kPa)	Tread Depth (mm)	Type
4.50-12	8	3.00B	127	545	415	400	7	TT

LL27

Bias

- Excellent protection against punctures
- Longer service life
- Very good stability



IMPLEMENT SERVICE



Size	Ply Rating	RIM	Section Width (mm)	Overall Diameter (mm)	Load Capacity (kg)	Inflation Pressure (kPa)	Tread Depth (mm)	Type
4.50-14	8	3.00D	120	602	1000	450	8	TT
5.50-16	8	4.00E	150	685	1100	470	8	TT
	10	4.00E	150	685	1325	530	8	TT

LL29

Bias

- Excellent protection against punctures
- Longer service life
- Very good stability



IMPLEMENT SERVICE



Size	Ply Rating	RIM	Section Width (mm)	Overall Diameter (mm)	Load Capacity (kg)	Inflation Pressure (kPa)	Tread Depth (mm)	Type
4.50-16	6	3.00D	122	655	615	360	8	TT
	8	3.00D	122	655	1000	450	8	TT
	10	3.00D	122	655	1325	530	8	TT
5.00-14	8	3.00D	130	620	1200	530	8	TT

LL38

Bias

- Excellent protection against punctures
- Longer service life
- Very good stability



IMPLEMENT SERVICE



Size	Ply Rating	RIM	Section Width (mm)	Overall Diameter (mm)	Load Capacity (kg)	Inflation Pressure (kPa)	Tread Depth (mm)	Type
4.50-16	6	3.00D	122	655	615	360	8	TT
	8	3.00D	122	655	1000	450	8	TT
	10	3.00D	122	655	1325	530	8	TT
5.00-16	8	3.00D	135	680	1200	600	8	TT
	10	3.00D	135	680	1350	650	8	TT
5.50-16	8	4.00E	150	685	1100	470	8	TT
	10	4.00E	150	685	1325	530	8	TT

LL82

Bias

- Excellent protection against punctures
- Longer service life
- Very good stability



IMPLEMENT SERVICE



Size	Ply Rating	RIM	Section Width (mm)	Overall Diameter (mm)	Load Capacity (kg)	Inflation Pressure (kPa)	Tread Depth (mm)	Type
4.00-8	6	3.00D	110	425	410	420	6.5	TT
	8	3.00D	110	425	700	530	6.5	TT

LL40

Bias

- Outstanding flotation
- Easy steering from the heavy grooved ribs



IMPLEMENT SERVICE



Size	Ply Rating	RIM	Section Width (mm)	Overall Diameter (mm)	Load Capacity (kg)	Inflation Pressure (kPa)	Tread Depth (mm)	Type
10-15	8	9.00	300	775	1240	300	10	TT

Industrial Service



LBR401



R-4 Bias

- Good resistance to wear
- Tread rubber resists damage
- The application of special reinforcement materials provides higher puncture resistance of tread

Size	Ply Rating	RIM	Section Width (mm)	Overall Diameter (mm)	Load Capacity (kg)	Inflation Pressure (kPa)	Tread Depth (mm)	Type
8.25-16	12	6.50H	235	855	D 1360 S 1550	530	22	TT



LL101



R-4 Bias

- Good resistance to wear
- Tread rubber resists damage

Size	Ply Rating	RIM	Section Width (mm)	Overall Diameter (mm)	Load Capacity (kg)	Inflation Pressure (kPa)	Tread Depth (mm)	Type
19.5L-24	12	DW16	495	1340	3450	230	30	TL



LL101A



R-4 Bias

- Tread pattern with very good traction and self-cleaning properties
- Application of C3 curing technology to improve wear resistance
- A flat stable tread to spread very heavy loads evenly across the footprint

Size	Ply Rating	RIM	Section Width (mm)	Overall Diameter (mm)	Load Capacity (kg)	Inflation Pressure (kPa)	Tread Depth (mm)	Type
NEW 16.9-28	12	W15L	430	1410	3450	260	27	TL
	14	W15L	430	1410	3750	300	27	TL



LBI302



R-4 Bias

- Outstanding traction thanks to 40° designed lugs
- Great traction due to specially developed tread pattern

Size	Ply Rating	Load Index	Speed Symbols	RIM	Section Width (mm)	Overall Diameter (mm)	Load capacity (kg)	Inflation Pressure (kPa)	Type
NEW 12.5/80-18	16	148	A8	9	318	985	3150	500	TL



BIAS INDUSTRIAL TIRES TREAD PATTERN AND SIZE



BIAS INDUSTRIAL TIRES TREAD PATTERN AND SIZE

Industrial Service

90-93



Industrial Service



LL2 Bias



- Strong body design gives the tyres superior durability
- Open shoulder tread pattern delivers traction in all weather conditions
- Suitable for mixed road conditions

Size	Ply Rating	Load Capacity (kg)	Inflation Pressure (kPa)	Section Width (mm)	Overall Diameter (mm)	Tread Depth (mm)	Type	RIM
9.00-16NHS	14	4080	750	255	890	12.5	TT	6.50H
	14	2635	750	255	890	12.5	TT	6.50H



LL39 Bias



- The high wear-resistant and low trace tread compound effectively extend tire service life
- Industrial application compound and construction, strong resistance to puncture and sidewall damage

Size	Ply Rating	Load Capacity (kg)	Inflation Pressure (kPa)	Section Width (mm)	Overall Diameter (mm)	Tread Depth (mm)	Type	RIM
18x7-8NHS	16	1640	1000	173	465	16	TT	4.33R
6.50-10NHS	10	1655	790	175	590	15	TT	5.00F
	14	1975	1070	175	590	15	TT	5.00F
7.00-15NHS	12	2900	850	194	735	20	TT	5.50S
8.15-15NHS	12	3230	840	215	704	16	TT	7.0
	12	2790	830	215	704	16	TT	7.0
28X9-15NHS	14	3050	970	220	710	15	TT	7.0



LL45 Bias



- The high wear-resistant and low trace tread compound effectively extend tire service life
- Industrial application compound and construction, strong resistance to puncture and sidewall damage

Size	Ply Rating	Load Capacity (kg)	Inflation Pressure (kPa)	Section Width (mm)	Overall Diameter (mm)	Tread Depth (mm)	Type	RIM
5.00-8NHS	6	850	600	137	470	12	TT	3.50D
	10	1150	1000	137	470	12	TT	3.50D
6.00-9NHS	10	1505	860	160	540	10	TT	4.00E
6.50-10NHS	10	1655	790	175	590	11	TT	5.00F
7.00-9NHS	10	1995	860	190	590	12	TT	5.00S
7.00-12NHS	12	2375	860	190	676	12	TT	5.00S
7.50-15NHS	14	3375	925	215	780	18	TT	6.0
8.25-12NHS	12	3060	720	235	765	12	TT	6.5
	14	3775	830	235	840	15	TT	6.5
8.25-15NHS	18	4240	1000	235	840	15	TT	6.5
	14	4495	760	255	890	16	TT	6.50H



LL65

Bias



- Strong body design ensures superior bearing and endurance performance
- Unique pattern is designed for longer tread life by preventing irregular wearing

Size	Ply Rating	Load Capacity (kg)	Inflation Pressure (kPa)	Section Width (mm)	Overall Diameter (mm)	Tread Depth (mm)	Type	RIM
10.00-15NHS	14	2800	750	280	935	12	TT	7.5



LL102

Bias



- Large pattern block to ensure the tire has a good driving performance
- Multiple rubber and reinforced tread compounds to meet complex operating environments

Size	Ply Rating	Load Capacity (kg)	Inflation Pressure (kPa)	Section Width (mm)	Overall Diameter (mm)	Tread Depth (mm)	Type	RIM
10-16.5NHS	10	2135	520	264	773	13	TL	8.25
	12	2375	620	264	773	13	TL	8.25
12-16.5NHS	12	2865	550	307	831	19.5	TL	9.75
14-17.5NHS	14	3875	550	349	921	24.5	TL	10.50



LL103

Bias



- Multiple rubber and reinforced tread compounds to meet complex operating environments
- The optimized pattern design ensures that the tire has excellent anti-skid performance

Size	Ply Rating	Load Capacity (kg)	Inflation Pressure (kPa)	Section Width (mm)	Overall Diameter (mm)	Tread Depth (mm)	Type	RIM
12-16.5LT	10	D1418 S1614	420	307	831	13	TL	9.75
	12	D1650 S1850	520	307	831	13	TL	9.75



LF401

Bias



- Industrial application compound and construction, strong resistance to puncture and side-wall damage
- Extra wide tread design for high mileage and even wear

Size	Ply Rating	Load Capacity (kg)	Inflation Pressure (kPa)	Section Width (mm)	Overall Diameter (mm)	Tread Depth (mm)	Type	RIM
18X7-8NHS	16	1640	1000	173	465	18	TT	4.33R
5.00-8NHS	10	1150	1000	137	470	15	TT	3.50D
6.00-9NHS	10	1505	860	160	540	15	TT	4.00E
6.50-10NHS	10	1655	790	175	590	16	TT	5.00F
7.00-12NHS	12	2375	860	190	676	17	TT	5.00S
8.25-15NHS	14	3775	830	235	840	20	TT	6.5
250-15NHS	18	4110	1030	250	735	23.5	TT	7.5
300-15NHS	18	5530	830	300	840	23.5	TT	8.0
7.50-16NHS	12	3195	790	215	805	22	TT	6.00G
9.00-20NHS	16	5595	860	259	1018	25	TT	7.0



LF402

Bias



- Industrial application compound and construction, strong resistance to puncture and sidewall damage
- Extra wide tread design for high mileage and even wear
- The high wear-resistant and low trace tread compound effectively extending tire service life

Size	Ply Rating	Load Capacity (kg)	Inflation Pressure (kPa)	Section Width (mm)	Overall Diameter (mm)	Tread Depth (mm)	Type	RIM
6.50-10NHS	10	1655	790	175	590	14	TT	5.00F
28X9-15NHS (8.15-15)	14	3050	970	220	710	16	TT	7.0



BIAS TIRES TREAD PATTERN AND SIZE



BIAS TIRES TREAD PATTERN AND SIZE

Light Truck Service	96-106
Mini Truck Service	107-108
Passenger Car Service	109-109
Truck/Bus Service	110-119



Light Truck Service

LL2

Bias



LIGHT TRUCK SERVICE

- The strong body design gives the tyres superior bearing and durability
- Open shoulder tread pattern delivers traction in all weather conditions
- Suitable for mixed road conditions

Size	Ply Rating	Load Index	Speed Symbols	Rim	Max.Load		Inflated Pressure		Section Width		Overall Diameter		Tread Depth		Type
					kg	lbs	kPa	psi	mm	inch	mm	inch	mm	32ND	
7.00-16LT	10	111/106	K	5.50F	D950 S1090	D2095 S2405	530	77	200	7.9	775	30.5	12	15.1	TT
	12	115/110	K	5.50F	D1060 S1215	D2335 S2680	630	91	200	7.9	775	30.5	12	15.1	TT
	14	118/114	K	5.50F	D1180 S1320	D2600 S2910	730	106	200	7.9	775	30.5	12	15.1	TT



LL8

Bias



LIGHT TRUCK SERVICE

- Claw pattern design ensures strong grip & self-cleaning
- Designed for durability and long service life

Size	Ply Rating	Load Index	Speed Symbols	Rim	Max.Load		Inflated Pressure		Section Width		Overall Diameter		Tread Depth		Type
					kg	lbs	kPa	psi	mm	inch	mm	inch	mm	32ND	
7.00-15LT	10	109/105	K	5.50F	D925 S1030	D2040 S2270	530	77	200	7.9	750	29.5	10.0	12.6	TT
	12	113/109	K	5.50F	D1030 S1150	D2270 S2535	630	91	200	7.9	750	29.5	10.0	12.6	TT
7.50-15LT	12	119/115	K	6.00G	D1215 S1360	D2680 S3000	630	91	215	8.5	780	30.7	11.0	13.9	TT



LL9

Bias



LIGHT TRUCK SERVICE

- Tread pattern delivers lateral traction in all weather conditions
- Water-drop groove type ensures tear and puncture resistance
- Wide footprint for long mileage and vehicle stability

Size	Ply Rating	Load Index	Speed Symbols	Rim	Max.Load		Inflated Pressure		Section Width		Overall Diameter		Tread Depth		Type
					kg	lbs	kPa	psi	mm	inch	mm	inch	mm	32ND	
6.00-15LT	8	97/92	K	4.50E	D630 S730	D1390 S1610	420	61	170	6.7	705	27.8	9.0	11.3	TT
	10	101/97	K/L	4.50E	D730 S825	D1610 S1820	530	77	170	6.7	705	27.8	9.0	11.3	TT
6.50-15LT	8	101/97	K/L	4.50E	D730 S825	D1610 S1820	420	61	180	7.1	730	28.7	9.0	11.3	TT
	10	106/101	K/L	4.50E	D825 S950	D1820 S2095	530	77	180	7.1	730	28.7	9.0	11.3	TT
7.50-15LT	10	115/110	K	6.00G	D1060 S1215	D2335 S2680	530	77	215	8.5	780	30.7	11.0	13.9	TT
	12	119/115	K/L	6.00G	D1215 S1360	D2680 S3000	630	91	215	8.5	780	30.7	11.0	13.9	TT



LL9A

Bias



LIGHT TRUCK SERVICE

- Tread pattern delivers lateral traction in all weather conditions
- Water-drop groove type ensures tear and puncture resistance
- Wide footprint for long mileage and vehicle stability

Size	Ply Rating	Load Index	Speed Symbols	Rim	Max.Load		Inflated Pressure		Section Width		Overall Diameter		Tread Depth		Type
					kg	lbs	kPa	psi	mm	inch	mm	inch	mm	32ND	
7.50-16LT	10	116/112	K/L	6.00G	D1120 S1250	D2470 S2755	530	77	215	8.5	805	31.7	10.0	12.6	TT
	12	120/116	K/L	6.00G	D1250 S1400	D2755 S3085	630	91	215	8.5	805	31.7	10.0	12.6	TT
	14	122/118	K/L	6.00G	D1320 S1500	D2910 S3305	730	106	215	8.5	805	31.7	10.0	12.6	TT
	16	126/123	K	6.00G	D1520 S1700	D3350 S3750	850	123	215	8.5	805	31.7	10.0	12.6	TT



LL10

Bias



- Recommended for mixed service drive application
- Designed for durability and long service life

Size	Ply Rating	Load Index	Speed Symbols	Rim	Max.Load		Inflated Pressure		Section Width		Overall Diameter		Tread Depth		Type
					kg	lbs	kPa	psi	mm	inch	mm	inch	mm	32ND	
7.50-16LT	8	112/107	K/L	6.00G	D975 S1120	D2150 S2470	420	61	215	8.5	805	31.7	13.0	16.4	TT
	10	116/112	K	6.00G	D1120 S1250	D2470 S2755	530	77	215	8.5	805	31.7	13.0	16.4	TT



LL11

Bias



- Tread pattern delivers lateral traction in all weather conditions
- Water-drop groove type ensures tear and puncture resistance
- Wide footprint for long mileage and vehicle stability

Size	Ply Rating	Load Index	Speed Symbols	Rim	Max.Load		Inflated Pressure		Section Width		Overall Diameter		Tread Depth		Type
					kg	lbs	kPa	psi	mm	inch	mm	inch	mm	32ND	
6.50-16LT	10	107/103	K/L	5.50F	D875 S975	D1930 S2150	530	77	185	7.3	750	29.5	10.0	12.6	TT
	12	110/105	K/L	5.50F	D925 S1060	D2040 S2335	630	91	185	7.3	750	29.5	10.0	12.6	TT
7.00-15LT	10	109/105	K/L	5.50F	D925 S1030	D2040 S2270	530	77	200	7.9	750	29.5	10.0	12.6	TT
	12	113/109	K	5.50F	D1030 S1150	D2270 S2535	630	91	200	7.9	750	29.5	10.0	12.6	TT
7.00-16LT	10	111/106	K	5.50F	D950 S1090	D2095 S2405	530	77	200	7.9	775	30.5	12.0	15.1	TT
	12	115/110	K/L	5.50F	D1060 S1215	D2335 S2680	630	91	200	7.9	775	30.5	12.0	15.1	TT
	14	118/114	K	5.50F	D1180 S1320	D2600 S2910	730	106	200	7.9	775	30.5	12.0	15.1	TT



LL15

Bias



- Claw pattern design ensures strong grip & self-cleaning
- Designed for durability and long service life

Size	Ply Rating	Load Index	Speed Symbols	Rim	Max.Load		Inflated Pressure		Section Width		Overall Diameter		Tread Depth		Type
					kg	lbs	kPa	psi	mm	inch	mm	inch	mm	32ND	
6.00-13LT	6	88/83	K	4.50B	D487 S560	D1075 S1235	320	46	170	6.7	655	25.8	9.0	11.3	TT
	8	93/89	K	4.50B	D580 S650	D1280 S1435	420	61	170	6.7	655	25.8	9.0	11.3	TT
6.00-14LT	8	95/90	K	4 1/2J	D600 S690	D1325 S1520	420	61	170	6.7	680	26.8	9.0	11.3	TT
	10	99/95	K	4 1/2J	D710 S800	D1565 S1765	530	77	170	6.7	680	26.8	9.0	11.3	TT
6.00-15LT	8	97/92	K	4.50E	D630 S730	D1390 S1610	420	61	170	6.7	705	27.8	9.0	11.3	TT
	10	101/97	K	4.50E	D730 S825	D1610 S1820	530	77	170	6.7	705	27.8	9.0	11.3	TT
6.50-14LT	8	99/95	K	4 1/2J	D690 S775	D1520 S1710	420	61	180	7.1	705	27.8	9.0	11.3	TT
	10	104/100	K	4 1/2J	D800 S900	D1765 S1985	530	77	180	7.1	705	27.8	9.0	11.3	TT
6.50-15LT	8	101/97	K	4.50E	D730 S825	D1610 S1820	420	61	180	7.1	730	28.7	9.0	11.3	TT
	10	106/101	K/L	4.50E	D825 S950	D1820 S2095	530	77	180	7.1	730	28.7	9.0	11.3	TT
6.50-16LT	10	107/103	K/L	5.50F	D875 S975	D1930 S2150	530	77	185	7.3	750	29.5	10.0	12.6	TT
	12	110/105	K	5.50F	D925 S1060	D2040 S2335	630	91	185	7.3	750	29.5	10.0	12.6	TT
7.50-16LT	10	116/112	K/L	6.00G	D1120 S1250	D2470 S2755	530	77	215	8.5	805	31.7	13.0	16.4	TT
	12	120/116	K	6.00G	D1250 S1400	D2755 S3085	630	91	215	8.5	805	31.7	13.0	16.4	TT
	14	122/118	K	6.00G	D1320 S1500	D2910 S3305	730	106	215	8.5	805	31.7	13.0	16.4	TT
8.25-16LT	16	126/123	K	6.00G	D1520 S1700	D3350 S3750	850	123	215	8.5	805	31.7	13.0	16.4	TT
	14	126/122	K	6.50H	D1500 S1700	D3305 S3750	630	91	235	9.3	855	33.7	14.5	18.3	TT
8.25-16LT	16	128/124	K	6.50H	D1600 S1800	D3525 S3970	730	106	235	9.3	855	33.7	14.5	18.3	TT



LL16

Bias



LIGHT TRUCK SERVICE

- Tread pattern delivers lateral traction in all weather conditions
- Solid shoulder provides for long, even wear
- Designed for durability and long service life

Size	Ply Rating	Load Index	Speed Symbols	Rim	Max.Load		Inflated Pressure		Section Width		Overall Diameter		Tread Depth		Type
					kg	lbs	kPa	psi	mm	inch	mm	inch	mm	32ND	
6.50-14LT	8	99/95	K/L	4 1/2J	D690 S775	D1520 S1710	420	61	180	7.1	705	27.8	9.0	11.3	TT
	10	104/100	K/L	4 1/2J	D800 S900	D1765 S1985	530	77	180	7.1	705	27.8	9.0	11.3	TT



LL18

Bias



LIGHT TRUCK SERVICE

- Tread pattern delivers lateral traction in all weather conditions
- Solid shoulder provides for long, even wear
- Designed for durability and long service life

Size	Ply Rating	Load Index	Speed Symbols	Rim	Max.Load		Inflated Pressure		Section Width		Overall Diameter		Tread Depth		Type
					kg	lbs	kPa	psi	mm	inch	mm	inch	mm	32ND	
6.00-13LT	6	88/83	K	4.50B	D487 S560	D1075 S1235	320	46	170	6.7	655	25.8	9.0	11.3	TT
	8	93/89	K	4.50B	D580 S650	D1280 S1435	420	61	170	6.7	655	25.8	9.0	11.3	TT



LL17

Bias



LIGHT TRUCK SERVICE

- Tread pattern delivers lateral traction in all weather conditions
- Solid shoulder provides for long, even wear
- Designed for durability and long service life

Size	Ply Rating	Load Index	Speed Symbols	Rim	Max.Load		Inflated Pressure		Section Width		Overall Diameter		Tread Depth		Type
					kg	lbs	kPa	psi	mm	inch	mm	inch	mm	32ND	
6.00-14LT	8	95/90	K	4 1/2J	D600 S690	D1325 S1520	420	61	170	6.7	680	26.8	9.0	11.3	TT
	10	100/96	K	4 1/2J	D710 S800	D1565 S1765	530	77	170	6.7	680	26.8	9.0	11.3	TT



LL19

Bias



LIGHT TRUCK SERVICE

- Thousand of sipes in tread promotes driving control performance
- Provides excellent traction in all weather condition

Size	Ply Rating	Load Index	Speed Symbols	Rim	Max.Load		Inflated Pressure		Section Width		Overall Diameter		Tread Depth		Type
					kg	lbs	kPa	psi	mm	inch	mm	inch	mm	32ND	
5.50-13LT	8	88/84	K	4.00B	D500 S560	D1100 S1235	420	61	160	6.3	620	24.4	9.0	11.3	TT



LL47

Bias



LIGHT TRUCK SERVICE

- Tread pattern delivers lateral traction in all weather conditions
- Solid shoulder provides for long, even wear
- Designed for durability and long service life

Size	Ply Rating	Load Index	Speed Symbols	Rim	Max.Load		Inflated Pressure		Section Width		Overall Diameter		Tread Depth		Type
					kg	lbs	kPa	psi	mm	inch	mm	inch	mm	32ND	
8.25-16LT	14	126/122	K/L	6.50H	D1500 S1700	D3305 S3750	630	91	235	9.3	855	33.7	12.5	15.7	TT
	16	128/124	K/L	6.50H	D1600 S1800	D3525 S3970	730	106	235	9.3	855	33.7	12.5	15.7	TT



LL62

Bias



LIGHT TRUCK SERVICE

- Heavy lugs optimized for cut, tear and puncture resistance
- Open shoulder tread pattern reduce driving heating

Size	Ply Rating	Load Index	Speed Symbols	Rim	Max.Load		Inflated Pressure		Section Width		Overall Diameter		Tread Depth		Type
					kg	lbs	kPa	psi	mm	inch	mm	inch	mm	32ND	
7.50-16LT	14	122/118	K	6.00G	D1320 S1500	D2910 S3305	730	106	215	8.5	816	32.1	15.0	18.9	TT
	16	126/123	K	6.00G	D1520 S1700	D3350 S3750	850	123	215	8.5	816	32.1	15.0	18.9	TT



LL59

Bias



LIGHT TRUCK SERVICE

- Claw pattern design ensures strong grip & self-cleaning
- Designed for durability and long service life

Size	Ply Rating	Load Index	Speed Symbols	Rim	Max.Load		Inflated Pressure		Section Width		Overall Diameter		Tread Depth		Type
					kg	lbs	kPa	psi	mm	inch	mm	inch	mm	32ND	
7.50-16LT	14	122/118	K	6.00G	D1320 S1500	D2910 S3305	730	106	215	8.5	805	31.7	12.0	15.1	TT
	16	126/123	K	6.00G	D1520 S1700	D3350 S3750	850	123	215	8.5	805	31.7	12.0	15.1	TT
8.25-16LT	14	126/122	K	6.50H	D1500 S1700	D3305 S3750	630	91	235	9.3	855	33.7	14.5	18.3	TT
	16	128/124	K	6.50H	D1600 S1800	D3525 S3970	730	106	235	9.3	855	33.7	14.5	18.3	TT



LL87

Bias



LIGHT TRUCK SERVICE

- Rough pattern stone ensures wear and crack resistance
- Recommended for truck in all weather conditions

Size	Ply Rating	Load Index	Speed Symbols	Rim	Max.Load		Inflated Pressure		Section Width		Overall Diameter		Tread Depth		Type
					kg	lbs	kPa	psi	mm	inch	mm	inch	mm	32ND	
7.50-16LT	14	122/118	K	6.00G	D1320 S1500	D2910 S3305	730	106	215	8.5	816	32.1	17.5	22.0	TT
8.25-16LT	14	126/122	K	6.50H	D1500 S1700"	D3305 S3750	630	91	235	9.3	855	33.7	14.0	17.6	TT



LL89

Bias



LIGHT TRUCK SERVICE

- Multi-functional pattern, suitable for mixed condition

Size	Ply Rating	Load Index	Speed Symbols	Rim	Max.Load		Inflated Pressure		Section Width		Overall Diameter		Tread Depth		Type
					kg	lbs	kPa	psi	mm	inch	mm	inch	mm	32ND	
7.50-16LT	14	122/118	K	6.00G	D1320 S1500	D2910 S3305	730	106	215	8.5	816	32.1	15.5	19.5	TT
	16	124/120	K	6.00G	D1390 S1580	D3065 S3485	758	110	215	8.5	816	32.1	15.5	19.5	TT
8.25-16LT	16	128/124	K	6.50H	D1600 S1800	D3525 S3970	730	106	235	9.3	867	34.1	18.5	23.3	TT



LL99

Bias



LIGHT TRUCK SERVICE

- Multi-functional pattern, suitable for mixed condition
- Robust tread and high traction on rough surfaces

Size	Ply Rating	Load Index	Speed Symbols	Rim	Max.Load		Inflated Pressure		Section Width		Overall Diameter		Tread Depth		Type
					kg	lbs	kPa	psi	mm	inch	mm	inch	mm	32ND	
7.50-16LT	16	126/123	K	6.00G	D1520 S1700	D3350 S3750	850	123	215	8.5	816	32.1	16.0	20.2	TT
8.25-16LT	16	128/124	K	6.50H	D1600 S1800	D3525 S3970	730	106	235	9.3	867	34.1	16.5	20.8	TT
9.00-16LT	16	134/129	K	6.50H	D1850 S2120	D4080 S4675	730	106	255	10.0	902	35.5	17.0	21.4	TT



MG-99

Bias



LIGHT TRUCK SERVICE

- Mixed pattern design ensures excellent strong grip
- Open shoulder tread pattern reduce driving heating

Size	Ply Rating	Load Index	Speed Symbols	Rim	Max.Load		Inflated Pressure		Section Width		Overall Diameter		Tread Depth		Type
					kg	lbs	kPa	psi	mm	inch	mm	inch	mm	32ND	
7.50-16LT	16	126/123	K	6.00G	D1520 S1700	D3350 S3750	850	123	215	8.5	816	32.1	18.0	22.7	TT



LL109

Bias



LIGHT TRUCK SERVICE

- Low rolling resistance
- Good wear and crack resistance
- Good heat dissipation

Size	Ply Rating	Load Index	Speed Symbols	Rim	Max.Load		Inflated Pressure		Section Width		Overall Diameter		Tread Depth		Type
					kg	lbs	kPa	psi	mm	inch	mm	inch	mm	32ND	
7.00-15LT	12	113/109	K	5.50F	D1030 S1150	D2270 S2535	630	91	200	7.9	760	29.9	15.0	18.9	TT



LL168A

Bias



LIGHT TRUCK SERVICE

- Tread pattern delivers lateral traction in all weather conditions
- Water-drop groove type ensures tear and puncture resistance
- Wide footprint for long mileage and vehicle stability



Size	Ply Rating	Load Index	Speed Symbols	Rim	Max.Load		Inflated Pressure		Section Width		Overall Diameter		Tread Depth		Type
					kg	lbs	kPa	psi	mm	inch	mm	inch	mm	32ND	
7.00-16LT	12	115/110	K/L	5.50F	D1060 S1215	D2335 S2680	630	91	200	7.9	775	30.5	10.0	12.6	TT
	14	126/122	K/L	6.50H	D1500 S1700	D3305 S3750	630	91	235	9.3	855	33.7	11.0	13.9	TT
8.25-16LT	16	128/124	K/L	6.50H	D1600 S1800	D3525 S3970	730	106	235	9.3	855	33.7	11.0	13.9	TT

Mini Truck Service



LL201

Bias



LIGHT TRUCK SERVICE

- Heavy lugs optimized for cut, tear and puncture resistance
- Open shoulder tread pattern reduce heat generation



Size	Ply Rating	Load Index	Speed Symbols	Rim	Max.Load		Inflated Pressure		Section Width		Overall Diameter		Tread Depth		Type
					kg	lbs	kPa	psi	mm	inch	mm	inch	mm	32ND	
7.50-16LT	8	112/107	K/L	6.00G	D975 S1120	D2150 S2470	410	61	215	8.5	816	32.1	12.0	15.1	TT
	10	116/112	K/L	6.00G	D1120 S1250	D2470 S2755	520	75	215	8.5	816	32.1	12.0	15.1	TT

LL20

Bias



MINI TRUCK SERVICE

- Zig-zag groove tread design reduces stone retention
- Provides excellent traction in all weather condition



Size	Ply Rating	Load Index	Speed Symbols	Rim	Max.Load		Inflated Pressure		Section Width		Overall Diameter		Tread Depth		Type
					kg	lbs	kPa	psi	mm	inch	mm	inch	mm	32ND	
5.00-10ULT	8	79/77	K	3.50B	D412 S437	D910 S965	400	58	143	5.6	517	20.4	8.0	10.1	TT
	8	83/81	K	3.50B	D462 S487	D1020 S1075	400	58	143	5.6	568	22.4	8.0	10.1	TT
5.00-12ULT	10	88/86	K	3.50B	D530 S560	D1170 S1235	500	73	143	5.6	568	22.4	8.0	10.1	TT

LL21

Bias



MINI TRUCK SERVICE

- Zig-zag groove tread design reduces stone retention
- Provides excellent traction in all weather condition

Size	Ply Rating	Load Index	Speed Symbols	Rim	Max.Load		Inflated Pressure		Section Width		Overall Diameter		Tread Depth		Type
					kg	lbs	kPa	psi	mm	inch	mm	inch	mm	32ND	
4.50-12ULT	8	77/76	K	3.00B	D400 S412	D880 S910	400	58	127	5.0	545	21.5	7.0	8.8	TT



LL41

Bias



MINI TRUCK SERVICE

- Multi-functional pattern, suitable for mixed condition

Size	Ply Rating	Load Index	Speed Symbols	Rim	Max.Load		Inflated Pressure		Section Width		Overall Diameter		Tread Depth		Type
					kg	lbs	kPa	psi	mm	inch	mm	inch	mm	32ND	
5.00-12ULT	8	83/81	K	3.50B	D462 S487	D1020 S1075	400	58	143	5.6	568	22.4	8.0	10.1	TT
	10	88/86	K	3.50B	D530 S560	D1170 S1235	500	73	143	5.6	568	22.4	8.0	10.1	TT
5.50-12ULT	10	92/89	K	4J	620	1365	530	77	160	6.3	594	23.4	8.0	10.1	TT



LL19

Bias



PASSENGER CAR SERVICE

- Provides excellent traction in all weather condition

Size	Ply Rating	Load Index	Speed Symbols	Rim	Max.Load		Inflated Pressure		Section Width		Overall Diameter		Tread Depth		Type
					kg	lbs	kPa	psi	mm	inch	mm	inch	mm	32ND	
5.60-13	4	70	K	4J	330	730	170	25	145	5.7	600	23.6	6.0	7.6	TT
	6	74	K	4J	370	815	210	30	145	5.7	600	23.6	6.0	7.6	TT



LL75

Bias



MINI TRUCK SERVICE

- Provides excellent traction in all weather condition

Size	Ply Rating	Load Index	Speed Symbols	Rim	Max.Load		Inflated Pressure		Section Width		Overall Diameter		Tread Depth		Type
					kg	lbs	kPa	psi	mm	inch	mm	inch	mm	32ND	
4.50-10ULT	6	60/57	K	3.50D	D230 S250	D505 S550	300	44	120	4.7	470	18.5	7.0	8.8	TT
	8	72/70	K	3.50D	D335 S350	D740 S770	400	58	120	4.7	470	18.5	7.0	8.8	TT



LL64

Bias



PASSENGER CAR SERVICE

- Zig-zag groove tread design reduces stone retention
- Provides excellent traction in all weather condition

Size	Ply Rating	Load Index	Speed Symbols	Rim	Max.Load		Inflated Pressure		Section Width		Overall Diameter		Tread Depth		Type
					kg	lbs	kPa	psi	mm	inch	mm	inch	mm	32ND	
5.90-13	4	73	K	4J	370	815	170	25	150	5.9	616	24.3	8.0	10.1	TT
	6	77	K	4J	415	915	210	30	150	5.9	616	24.3	8.0	10.1	TT



Truck/Bus Service

LL1

Bias



TRUCK/BUS SERVICE

- Tread pattern delivers lateral traction in all weather conditions
- Solid shoulder provides for long, even wear

Size	Ply Rating	Load Index	Speed Symbols	Rim	Max.Load		Inflated Pressure		Section Width		Overall Diameter		Tread Depth		Type
					kg	lbs	kPa	psi	mm	inch	mm	inch	mm	32ND	
12.00-24	16	156/152	G	8.5	D3550 S4000	D7830 S8820	670 740	97 107	315	12.4	1225	48.2	15.0	18.9	TT
	18	158/154	G	8.5	D3750 S4250	D8270 S9370	740 810	107 118	315	12.4	1225	48.2	15.0	18.9	TT



LL2

Bias



TRUCK/BUS SERVICE

- Claw pattern design ensures strong grip & self-cleaning
- Designed for durability and long service life

Size	Ply Rating	Load Index	Speed Symbols	Rim	Max.Load		Inflated Pressure		Section Width		Overall Diameter		Tread Depth		Type
					kg	lbs	kPa	psi	mm	inch	mm	inch	mm	32ND	
9.00-20	14	141/137	G/K	7.0	D2300 S2575	D5070 S5675	700 770	102 112	259	10.2	1018	40.1	15.0	18.9	TT
	16	145/140	G	7.0	D2500 S2900	D5510 S6395	810 880	118 128	259	10.2	1018	40.1	15.0	18.9	TT
10.00-20	16	146/142	G	7.5	D2650 S3000	D5840 S6610	740 810	107 118	278	10.9	1055	41.5	15.0	18.9	TT
	18	150/145	G	7.5	D2900 S3350	D6395 S7390	840 910	122 132	278	10.9	1055	41.5	15.0	18.9	TT
12.00-20	16	152/148	G	8.5	D3150 S3550	D6940 S7830	670 740	97 107	315	12.4	1125	44.3	15.0	18.9	TT
	18	154/150	G	8.5	D3350 S3750	D7390 S8270	740 810	107 118	315	12.4	1125	44.3	15.0	18.9	TT



LL3

Bias



TRUCK/BUS SERVICE

- Claw pattern design ensures strong grip & self-cleaning
- Designed for durability and long service life

Size	Ply Rating	Load Index	Speed Symbols	Rim	Max.Load		Inflated Pressure		Section Width		Overall Diameter		Tread Depth		Type
					kg	lbs	kPa	psi	mm	inch	mm	inch	mm	32ND	
8.25-20	14	136/131	G	6.5	D1950 S2240	D4300 S4940	740 810	107 118	236	9.3	974	38.3	15.0	18.9	TT



LL4

Bias



TRUCK/BUS SERVICE

- Claw pattern design ensures strong grip & self-cleaning
- Designed for durability and long service life

Size	Ply Rating	Load Index	Speed Symbols	Rim	Max.Load		Inflated Pressure		Section Width		Overall Diameter		Tread Depth		Type
					kg	lbs	kPa	psi	mm	inch	mm	inch	mm	32ND	
9.00-20	14	141/137	G/K	7.0	D2300 S2575	D5070 S5675	700 770	102 112	259	10.2	1018	40.1	15.0	18.9	TT
	16	145/140	G	7.0	D2500 S2900	D5510 S6395	810 880	118 128	259	10.2	1018	40.1	15.0	18.9	TT
11.00-20	16	150/145	G	8.0	D2900 S3350	D6395 S7390	740 810	107 118	293	11.5	1085	42.7	16.0	20.2	TT
	18	153/148	G	8.0	D3150 S3650	D6940 S8050	840 910	122 132	293	11.5	1085	42.7	16.0	20.2	TT



LL6

Bias

- Designed for durability and long service life
- Recommended for truck in all weather conditions



TRUCK/BUS SERVICE

Size	Ply Rating	Load Index	Speed Symbols	Rim	Max.Load		Inflated Pressure		Section Width		Overall Diameter		Tread Depth		Type
					kg	lbs	kPa	psi	mm	inch	mm	inch	mm	32ND	
9.00-20	14	141/137	G	7.0	D2300	D5070	700	102	259	10.2	1018	40.1	15.0	18.9	TT
					S2575	S5675	770	112							
12.00-24	16	145/140	G	7.0	D2500	D5510	810	118	259	10.2	1018	40.1	15.0	18.9	TT
					S2900	S6395	880	128							
12.00-24	16	156/152	G	8.5	D3550	D7830	670	97	315	12.4	1225	48.2	16.0	20.2	TT
					S4000	S8820	740	107							
12.00-24	18	158/154	G	8.5	D3750	D8270	740	107	315	12.4	1225	48.2	16.0	20.2	TT
					S4250	S9370	810	118							



LL7

Bias

- Designed for durability and long service life
- Recommended for truck in all weather conditions



TRUCK/BUS SERVICE

Size	Ply Rating	Load Index	Speed Symbols	Rim	Max.Load		Inflated Pressure		Section Width		Overall Diameter		Tread Depth		Type
					kg	lbs	kPa	psi	mm	inch	mm	inch	mm	32ND	
7.50-20	12	128/124	G	6.0	D1600	D3525	670	97	215	8.5	935	36.8	14.0	17.6	TT
					S1800	S3970	740	107							
7.50-20	14	130/126	G	6.0	D1700	D3750	740	107	215	8.5	935	36.8	14.0	17.6	TT
					S1900	S4190	810	118							



LL47

Bias



TRUCK/BUS SERVICE

- Tread pattern delivers lateral traction in all weather conditions
- Solid shoulder provides for long, even wear
- Designed for durability and long service life

Size	Ply Rating	Load Index	Speed Symbols	Rim	Max.Load		Inflated Pressure		Section Width		Overall Diameter		Tread Depth		Type
					kg	lbs	kPa	psi	mm	inch	mm	inch	mm	32ND	
7.00-20	12	124/120	G	5.5	D1400	D3085	670	97	200	7.9	904	35.6	12.0	15.1	TT
					S1600	S3525	740	107							
7.00-20	14	127/123	G	5.5	D1550	D3415	770	112	200	7.9	904	35.6	12.0	15.1	TT
					S1750	S3860	840	122							
8.25-20	14	136/131	G/K	6.5	D1950	D4300	740	107	236	9.3	974	38.3	14.0	17.6	TT
					S2240	S4940	810	118							
9.00-20	14	141/137	G/K	7.0	D2300	D5070	700	102	259	10.2	1018	40.1	15.0	18.9	TT
					S2575	S5675	770	112							
9.00-20	16	145/140	G	7.0	D2500	D5510	810	118	259	10.2	1018	40.1	15.0	18.9	TT
					S2900	S6395	880	128							
10.00-20	16	146/142	G	7.5	D2650	D5840	740	107	278	10.9	1055	41.5	15.0	18.9	TT
					S3000	S6610	810	118							
10.00-20	18	150/145	G	7.5	D2900	D6395	840	122	278	10.9	1055	41.5	15.0	18.9	TT
					S3350	S7390	910	132							
11.00-20	16	150/145	G	8.0	D2900	D6395	740	107	293	11.5	1085	42.7	15.0	18.9	TT
					S3350	S7390	810	118							
11.00-20	18	153/148	G	8.0	D3150	D6940	840	122	293	11.5	1085	42.7	15.0	18.9	TT
					S3650	S8050	910	132							
12.00-20	16	152/148	G	8.5	D3150	D6940	670	97	315	12.4	1125	44.3	15.0	18.9	TT
					S3550	S7830	740	107							
12.00-20	18	154/150	G	8.5	D3350	D7390	740	107	315	12.4	1125	44.3	15.0	18.9	TT
					S3750	S8270	810	118							



LL57

Bias

- Multi-functional pattern, suitable for mixed condition



TRUCK/BUS SERVICE

Size	Ply Rating	Load Index	Speed Symbols	Rim	Max.Load		Inflated Pressure		Section Width		Overall Diameter		Tread Depth		Type
					kg	lbs	kPa	psi	mm	inch	mm	inch	mm	32ND	
10.00-20	16	146/142	G	7.5	D2650	D5840	740	107	278	10.9	1055	41.5	18.0	22.7	TT
					S3000	S6610	810	118							
10.00-20	18	150/145	G	7.5	D2900	D6395	840	122	278	10.9	1055	41.5	18.0	22.7	TT
					S3350	S7390	910	132							



LL58

Bias



- Claw pattern design ensures strong grip & self-cleaning
- Enhanced construction optimized for service life

Size	Ply Rating	Load Index	Speed Symbols	Rim	Max.Load		Inflated Pressure		Section Width		Overall Diameter		Tread Depth		Type
					kg	lbs	kPa	psi	mm	inch	mm	inch	mm	32ND	
10.00-20	16	146/142	G	7.5	D2650 S3000	D5840 S6610	740 810	107 118	278	10.9	1055	41.5	18.0	22.7	TT
	18	150/145	G	7.5	D2900 S3350	D6395 S7390	840 910	122 132	278	10.9	1055	41.5	18.0	22.7	TT



LL59

Bias



- Claw pattern design ensures strong grip & self-cleaning
- Designed for durability and long service life

Size	Ply Rating	Load Index	Speed Symbols	Rim	Max.Load		Inflated Pressure		Section Width		Overall Diameter		Tread Depth		Type
					kg	lbs	kPa	psi	mm	inch	mm	inch	mm	32ND	
9.00-20	14	141/137	G	7.0	D2300 S2575	D5070 S5675	700 770	102 112	259	10.2	1018	40.1	14.0	17.6	TT
	16	145/140	G	7.0	D2500 S2900	D5510 S6395	810 880	118 128	259	10.2	1018	40.1	14.0	17.6	TT
10.00-20	16	146/142	G	7.5	D2650 S3000	D5840 S6610	740 810	107 118	278	10.9	1055	41.5	14.0	17.6	TT
	18	150/145	G	7.5	D2900 S3350	D6395 S7390	840 910	122 132	278	10.9	1055	41.5	14.0	17.6	TT
11.00-20	16	150/145	G	8.0	D2900 S3350	D6395 S7390	740 810	107 118	293	11.5	1085	42.7	15.0	18.9	TT
	18	153/148	G	8.0	D3150 S3650	D6940 S8050	840 910	122 132	293	11.5	1085	42.7	15.0	18.9	TT
12.00-20	16	152/148	G	8.5	D3150 S3550	D6940 S7830	670 740	97 107	315	12.4	1125	44.3	15.0	18.9	TT
	18	154/150	G	8.5	D3350 S3750	D7390 S8270	740 810	107 118	315	12.4	1125	44.3	15.0	18.9	TT
14.00-20	20	156/151	G	8.5	D3450 S4000	D7610 S8820	810 880	118 128	315	12.4	1125	44.3	15.0	18.9	TT
	18	161/156	E	10.0	D4000 S4625	D8820 S10200	600 670	87 97	375	14.8	1240	48.8	20.0	25.2	TT
20	164/159	E	10.0	D4375 S5000	D9650 S11000	700 770	102 112	375	14.8	1240	48.8	20.0	25.2	TT	



LL67

Bias



- Tread pattern delivers lateral traction in all weather conditions
- Solid shoulder provides long, even wear
- Designed for durability and long service life

Size	Ply Rating	Load Index	Speed Symbols	Rim	Max.Load		Inflated Pressure		Section Width		Overall Diameter		Tread Depth		Type
					kg	lbs	kPa	psi	mm	inch	mm	inch	mm	32ND	
10.00-20	14	144/139	G	7.5	D2430 S2800	D5355 S6610	D620 S690	90 100	278	10.9	1054	41.5	11.0	13.9	TT



LL87

Bias



- Rough pattern stone ensures wear and crack resistance
- Recommended for truck in all weather conditions

Size	Ply Rating	Load Index	Speed Symbols	Rim	Max.Load		Inflated Pressure		Section Width		Overall Diameter		Tread Depth		Type
					kg	lbs	kPa	psi	mm	inch	mm	inch	mm	32ND	
8.25-20	14	136/131	G	6.5	D1950 S2240	D4300 S4940	740 810	107 118	236	9.3	974	38.3	14.0	17.6	TT
9.00-20	16	145/140	G	7.0	D2500 S2900	D5510 S6395	810 880	118 128	259	10.2	1018	40.1	15.0	18.9	TT
10.00-20	18	150/145	G	7.5	D2900 S3350	D6395 S7390	840 910	122 132	278	10.9	1073	42.2	20.0	25.2	TT
11.00-20	18	153/148	G	8.0	D3150 S3650	D6940 S8050	840 910	122 132	293	11.5	1085	42.7	16.0	20.2	TT
12.00-20	18	154/150	G	8.5	D3350 S3750	D7390 S8270	740 810	107 118	315	12.4	1125	44.3	16.0	20.2	TT



LL95

Bias



TRUCK/BUS SERVICE

- Claw pattern design ensures strong grip & self-cleaning
- Designed for durability and long service life

Size	Ply Rating	Load Index	Speed Symbols	Rim	Max.Load		Inflated Pressure		Section Width		Overall Diameter		Tread Depth		Type
					kg	lbs	kPa	psi	mm	inch	mm	inch	mm	32ND	
13.00-20	16	156/151	E	9.0	D3450	D7610	600	87	340	13.4	1177	46.3	18.0	22.7	TT
					S3875	S8820	670	97							
	18	158/154	E	9.0	D3750	D8270	700	102	340	13.4	1177	46.3	18.0	22.7	TT
					S4250	S9370	770	112							



LL96-T

Bias



TRUCK/BUS SERVICE

- Special pattern stone design available for more heavy load
- Robust tread and high traction on rough surfaces

Size	Ply Rating	Load Index	Speed Symbols	Rim	Max.Load		Inflated Pressure		Section Width		Overall Diameter		Tread Depth		Type
					kg	lbs	kPa	psi	mm	inch	mm	inch	mm	32ND	
8.25-20	14	136/131	C	6.5	D1950	D4300	740	107	236	9.3	992	39.1	19.0	23.9	TT
					S2240	S4940	810	118							
9.00-20	16	145/140	B	7.0	D2500	D5510	810	118	259	10.2	1038	40.9	22.0	27.7	TT
					S2900	S6395	880	128							
11.00-20	18	153/148	C	8.0	D3150	D6940	840	122	293	11.5	1105	43.5	25.0	31.5	TT
					S3650	S8050	910	132							
12.00-20	18	154/150	C	8.5	D3350	D7390	740	107	315	12.4	1145	45.1	25.0	31.5	TT
					S3750	S8270	810	118							
13.00-20	18	158/154	B	9.0	D3750	D8270	700	102	340	13.4	1200	47.2	24.0	30.2	TT
					S4250	S9370	770	112							



LL96

Bias



TRUCK/BUS SERVICE

- Special pattern stone design available for more heavy load
- Robust tread and high traction on rough surfaces

Size	Ply Rating	Load Index	Speed Symbols	Rim	Max.Load		Inflated Pressure		Section Width		Overall Diameter		Tread Depth		Type
					kg	lbs	kPa	psi	mm	inch	mm	inch	mm	32ND	
10.00-20	18	150/145	G	7.5	D2900	D6395	840	122	278	10.9	1073	42.2	20.0	25.2	TT
					S3350	S7390	910	132							
	16	150/145	G	8.0	D2900	D6395	740	107	293	11.5	1105	43.5	21.0	26.5	TT
					S3350	S7390	810	118							
11.00-20					D3150	D6940	840	122	293	11.5	1105	43.5	21.0	26.5	TT
	18	153/148	G	8.0	S3650	S8050	910	132							
14.00-20	20	164/159	E	10.0	D4375	D9650	700	102	375	14.8	1265	49.8	22.0	27.7	TT
					S5000	S11000	770	112							



SL96-T

Bias



TRUCK/BUS SERVICE

- Deepen pattern stone ensures wear and crack resistance
- Robust tread and high traction on rough surfaces

Size	Ply Rating	Load Index	Speed Symbols	Rim	Max.Load		Inflated Pressure		Section Width		Overall Diameter		Tread Depth		Type
					kg	lbs	kPa	psi	mm	inch	mm	inch	mm	32ND	
10.00-20	18	150/145	C	7.5	D2900	D6395	840	122	278	10.9	1073	42.2	27.0	34.0	TT
					S3350	S7390	910	132							



LL97

Bias



TRUCK/BUS SERVICE

- Multi-functional pattern, suitable for mixed condition

Size	Ply rating	Load Index	Speed Symbols	Rim	Max.Load		Inflated Pressure		Section Width		Overall Diameter		Tread Depth		Type
					kg	lbs	kPa	psi	mm	inch	mm	inch	mm	32ND	
9.00-20	16	145/140	G	7.0	D2500	D5510	810	118	259	10.2	1018	40.1	15.0	18.9	TT
					S2900	S6395	880	128							
10.00-20	18	150/145	G	7.5	D2900	D6395	840	122	278	10.9	1073	42.2	20.0	25.2	TT
					S3350	S7390	910	132							



LL98

Bias



TRUCK/BUS SERVICE

- Deepen rough pattern stone ensures wear and crack resistance
- Robust tread and high traction on rough surfaces

Size	Ply Rating	Load Index	Speed Symbols	Rim	Max.Load		Inflated Pressure		Section Width		Overall Diameter		Tread Depth		Type
					kg	lbs	kPa	psi	mm	inch	mm	inch	mm	32ND	
9.00-20	16	145/140	G	7.0	D2500	D5510	810	118	259	10.2	1038	40.9	20.0	25.2	TT
					S2900	S6395	880	128							
10.00-20	18	150/145	G	7.5	D2900	D6395	840	122	278	10.9	1073	42.2	21.0	26.5	TT
					S3350	S7390	910	132							
12.00-20	18	154/150	G	8.5	D3350	D7390	740	107	315	12.4	1145	45.1	21.0	26.5	TT
					S3750	S8270	810	118							
14.00-20	20	164/159	E	10.0	D4375	D9650	700	102	375	14.8	1265	49.8	22.0	27.7	TT
					S5000	S11000	770	112							



LL150

Bias



TRUCK/BUS SERVICE

- Claw pattern design ensures strong grip & self-cleaning
- Designed for durability and long service life

Size	Ply Rating	Load Index	Speed Symbols	Rim	Max.Load		Inflated Pressure		Section Width		Overall Diameter		Tread Depth		Type
					kg	lbs	kPa	psi	mm	inch	mm	inch	mm	32ND	
14.00-20	20	164/159	E	10.0	D4375	D9650	700	102	375	14.8	1265	49.8	26.0	32.7	TT
					S5000	S11000	770	112							



LL159

Bias



TRUCK/BUS SERVICE

- Claw pattern design ensures strong grip & self-cleaning
- Designed for durability and long service life

Size	Ply Rating	Load Index	Speed Symbols	Rim	Max.Load		Inflated Pressure		Section Width		Overall Diameter		Tread Depth		Type
					kg	lbs	kPa	psi	mm	inch	mm	inch	mm	32ND	
7.50-20	14	130/126	G	6.0	D1700	D3750	740	107	215	8.5	935	36.8	12.0	15.1	TT
					S1900	S4190	810	118							





The world at your reach

web:en.linglong.cn

Tel: +86-18705355553/ 18705355381

E-mail: pengfei_yu@linglong.cn/ fannie_liu@linglong.cn
