



ECOAIR
亿科艾尔

www.ecoairnb.com

SYSTEM SOLUTION

Hvac

Clean Technology



宁波亿科艾尔环境科技有限公司
Ningbo Ecoair Environmental Technology Co., Ltd

Tel: +86-574-28897839
Domestic(内销): marketing@ecoairnb.com
Overseas: sales@ecoairnb.com
Add: No. 788 Jinda Road, Yinzhou district, Ningbo, Zhejiang Province, China
宁波市鄞州区金达路 788 号





- + A professional HVAC manufacturer
- + An expert on HVAC
- + An enabler for HVAC
- + A problem solver for customers

**INTEGRITY WINS THE MARKET
QUALITY MAKES THE FUTURE**

We are experienced in product design and precise customization.
Devote for the most suitable products instead of just good products.

宁波亿科艾尔环境科技有限公司是一家专业的中央空调生产商。

本着“诚信赢市场，品质铸未来”的经营理念，亿科艾尔人不断求真创新，积极进取，为实现中央空调真正的定制化而努力奋斗。



www.ecoairnb.com

目录 CATALOGUE

1 AHU 末端产品

- Modular Air Handling Unit
组合式空调箱
- Standard AHU
空气处理机组
 - Horizontal Type 卧式机组
 - Vertical Type 立式机组
 - Ceiling Type 吊式机组
 - Jet Flow Type 射流风柜
- Fan Coil Unit
风机盘管

2 Direct Expansion Air Conditioning Unit 直膨机组

- Rooftop Package Unit / 整体式
- Large Duct Split Unit / 分体式

3 Water Cooled Package Unit 水源热泵

4 Intelligent Control System 智能控制系统



ECCOIR
亿科艾尔

ECOAIR ENVIRONMENTAL TECHNOLOGY

组合式空调箱

MODULAR AIR HANDLING UNIT

S. No.	Section name 功能名称	Functional section description 功能段说明
1	Air in section 进风段	Let into the air from duct to AHU. 将空气引入空处的功能段
2	Air mixing section 混合段	Mix RA and FA. 回风和新风在该功能段实现混合
3	Air volume regulation section 分风调节段	Adjust FA and RA proportion. 通过风阀调节来确定新风回风风量以满足需求
4	Filtration section 过滤段	Improve indoor air quality. 改善室内空气品质
5	Cooling coil section 表冷段	Heat exchange with either water coil or DX coil. 放置换热器的功能段, 可配置水盘管或氟盘管
6	Heating coil section 加热段	Heat exchange with either water coil or DX coil. 放置换热器的功能段, 可配置水盘管或氟盘管
7	E-heater section 电加热段	Electric heating elements. 放置电加热的功能段
8	Humidification section 加湿段	Different humidification methods to humidify. 可选不同加湿方式, 实现对空气加湿处理
9	Supply fan section 风机段	Various of fan types are available. 放置不同类型送风风机的功能段
10	Sound attenuator section 消声段	Reduce noise. 降低风噪的功能段
11	Diffusion section 均流段	To make the air evenly distributed. 使风流均匀分布的功能段
12	UV light section 紫外杀菌段	UV elements for sterilization. 放置紫外线灯管并达到杀菌目的的功能段
13	Electrostatic precipitation section 静电除尘段	Electrostatic dust removal. 采用高压静电除尘技术的功能段
14	Ozonator section 臭氧发生段	Produce ozone. 用来产生臭氧的功能段
15	Heat recovery section 热回收段	Heat recovery. 放置不同形式的热回收器的功能段
16	Rotary dehumidification section 转轮除湿段	High efficiency rotary for dehumidification. 高效吸湿转轮, 能处理 100% 的湿空气
17	Air outlet section 出风段	Supply air outlet can be set according to different requirements. 可根据不同需求设置出风口, 可侧送, 也可上送



YZH 80-40 E L 3001

Design Code (设计序号)

Handing (接管方向): L=Left (左式), R=Right (右式)

Panel thickness (面板厚度): E: 25mm, S: 50mm, W: 80mm

40: Norminal cooling capacity (名义冷量)=40kw

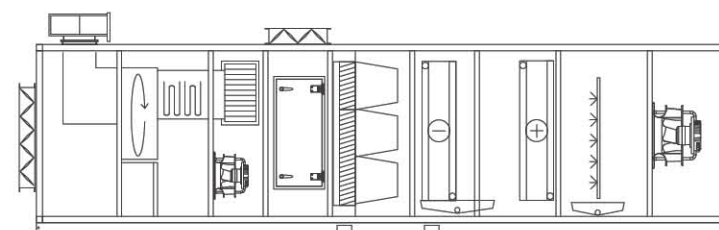
80: Norminal Airflow (名义风量) (80x100=8000m³/h)

YZH: Ecoair Modular Air Handling Unit (亿科艾尔组合式空调箱)

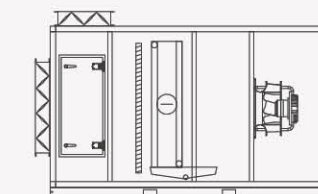
- Comfortable type / Clean room type.
- Multi-section options such as cooling&heating, humidification, supply fan, filtration, heat recovery, dehumidification, mixing air, etc.
- Customization is available.
- Air flow range: 2000~180000m³/h.

- 舒适型 / 净化型可选。
- 多种功能段灵活组合, 如冷却及加热段、加湿段、风机段、各种过滤功能段、热回收段、除湿段、混风段、检修段等。
- 可根据用户需求非标定制。
- 风量范围: 2000~180000m³/h。

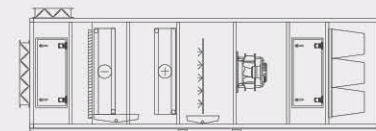
Fresh air + Panel filter + Electrical heater + Dehumidification wheel + Regenerative fan
新风 + 初效 + 电加热 + 除湿转轮 + 再生风机



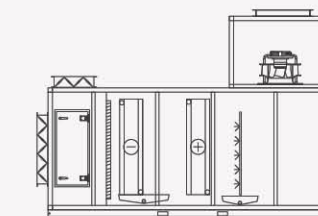
Fresh air + Panel filter + Dehumidification wheel + Induced draft fan + Return air + Bag filter + Cooling coil + Heating coil + Humidifier + Fan
新风 + 初效 + 除湿转轮 + 引风机 + 回风 + 中效 + 表冷 + 加热 + 加湿 + 送风机



Mixing + Panel filter + Cooling coil + Fan
混合 + 初效 + 表冷 + 风机

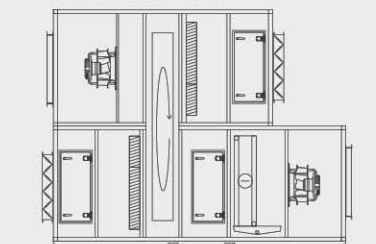


Mixing + Panel filter + Cooling coil + Heating coil + Humidification + Fan + Diffusion + Bag filter + Air supply
混合 + 初效 + 表冷 + 加热 + 加湿 + 风机 + 均流 + 中效 + 出风



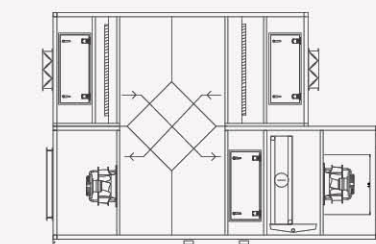
Mixing + Panel filter + Cooling coil + Heating coil + Humidification + Empty + Fan
混合 + 初效 + 表冷 + 加热 + 加湿 + 中间 + 风机

Return + Panel filter + Heat wheel + Exhaust
回风 + 初效 + 转轮 + 排风



Fresh air + Panel filter + Heat wheel + Bag filter + Empty section + Cooling coil + Supply air
新风 + 初效 + 转轮 + 中效 + 中间 + 表冷 + 送风

Fresh air + Panel filter + Plate heat exchanger + Empty section + Cooling coil + Supply air
新风 + 初效 + 板式热回收 + 中间 + 表冷 + 送风



Return air + Panel filter + Plate heat exchanger + Exhaust
回风 + 初效 + 板式热回收 + 排风

- Double skin polyurethane insulation panel with different skin material options.
- Anti-cold bridge aluminum alloy profile with fancy appearance, ultra-high strength and excellent anti-corrosion performance.
- Multiterm proprietary sealing technology for lower air leakage rate than standard.
- AHRI certified.

Heat recovery

- Multiple choices:
- Plate type total heat exchanger
 - Plate type sensible heat exchanger
 - Heat wheel
 - Heatpipe

Profile & Panel

- Primary: Panel type, Filtration class G2-G4.
- Secondary: Bag type, Filtration class F5-F9.
- HEPA: High air volume and low resistance, Filtration class H10-H13, special sealing and fixing method to ensure the best sealing.
- Others: Activative carbon filter, etc.

Filtration

- Various of branded humidifier options.
- Stainless steel nozzle and installation components.

Humidifier

Filtration

- Adopt the latest fin structure and advanced tube expansion technology, make sure every fin sits on the tube tightly for the best heat transfer performance.
- Different fin material and coating options to meet all kinds of anti-corrosion requirements.
- Easy to drain with release valve on the header pipe bottom, avoid pipe freezing in winter.

Heat exchanger

Fan

- Famous branded fans with dynamic and static balance strictly tested before delivery.
- Program selected fan models, which ensure high efficiency, low noise and safe & reliable operation.

Damper

- Aluminum alloy material with light weight and high strength.
- Perfect bearing and sealing performance.

组合式空调箱

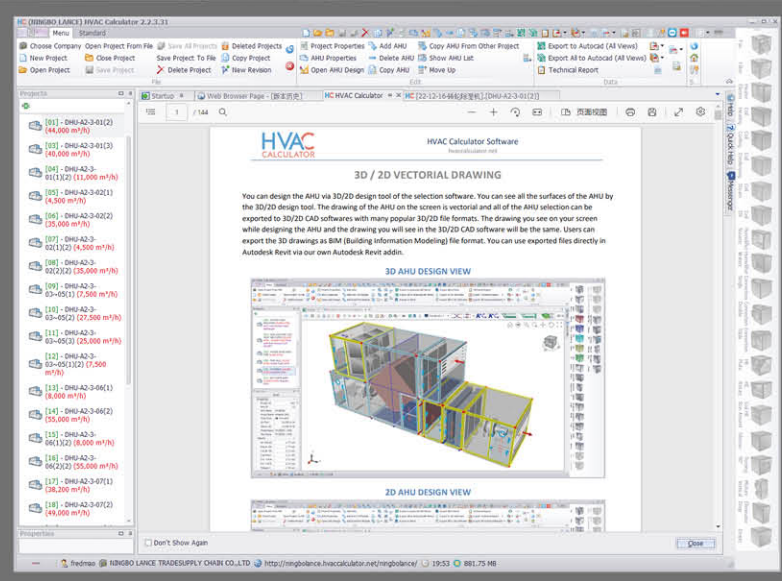
MODULAR AIR HANDLING UNIT

选型软件

软件功能

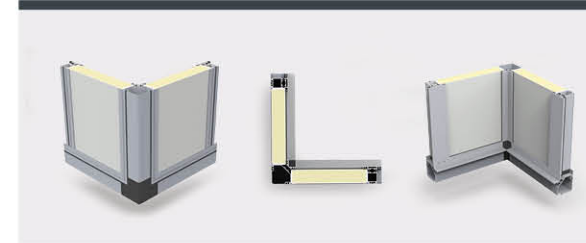
1. 工程项目管理
2. 模块化设计
3. 灵活的功能段组合
4. 根据客户要求提供多样的配置选项
5. 根据客户要求自动输出机组性能参数表
6. 提供整机报价
7. 提供图纸输出和配置清单

亿科艾尔可提供专业的机组选型服务, 根据客户的具体要求, 提供灵活的功能段组合设计。



AHU

Components 配件



PROFILE AND PANEL 框架与箱板

- 双层保温面板结构, 隔热性能好。
- 采用断桥铝合金型材, 外形美观, 强度高, 防腐性能优越。
- 机组采用多项专有密封技术, 漏风率远低于国标要求, 保温性能优秀。
- 取得 AHRI 空调箱认证。



HEAT EXCHANGER 热交换器

- 采用机械低速胀管技术, 保证每一翅片与铜管牢固结合, 达到最佳的传热效果。
- 客户可根据实际需求选配翅片材质或防腐涂层, 以达到所需的防腐效果。
- 集水管最低处设置排水阀, 排水方便, 避免冬季盘管冻裂。



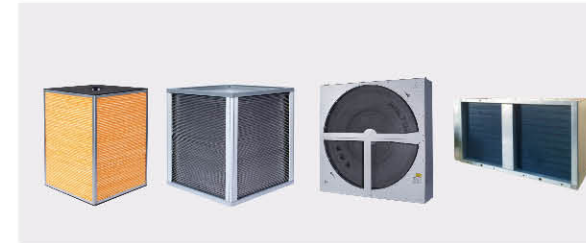
FAN 风机

- 采用知名品牌风机, 风轮及整机出厂前均经过严格动、静平衡测试。
- 每一台风机经过严格电脑软件选型, 可保证风机工作在高效区域, 噪音低、效率高、运行安全可靠。



HUMIDIFIER 加湿器

- 多种知名品牌和类型的加湿器可供选配。
- 加湿喷管及安装组件全部采用不锈钢材质。



HEAT RECOVERY 热回收

- 全热型板式热回收
- 转轮热回收
- 显热型板式热回收
- 热管式热回收



FILTRATION 过滤器

- 初效过滤器: 板式为主, 效率等级 G2~G4。
- 中效过滤器: 袋式居多, 效率等级 F5~F9。
- (亚) 高效过滤器: 大风量低阻型, 等级有 H10~H13, 采取特别密封和固定方式, 严格保证密封效果。

其它: 各种纤维-活性炭复合型过滤器、炭筒式化学过滤器、自洁式滤筒过滤器、自洁式转轮过滤器。



DAMPER 风阀

- 风阀外框和机翼型叶片均采用铝合金材质, 质量轻强度高。
- 叶片顶端有耐高温密封条, 与侧面边框有密封结构, 保证风阀的超高密封性。
- 调节阀轴承采用含油铜粉冶金, 无需加油, 可永久润滑, 可耐 200 度高温。

空气处理机组 STANDARD AHU



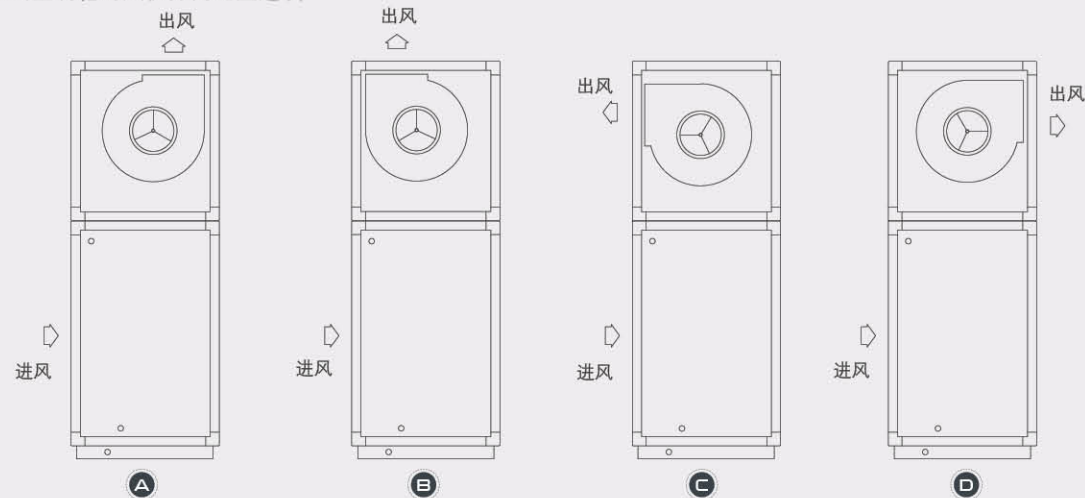
- Anti-cold bridge aluminum alloy profile, double skin polyurethane insulation panel with different skin material options.
- Excellent sealing, acoustic and thermal insulation performance.
- Horizontal, Vertical, Ceiling and Jet flow structures are available.
- Airflow range: 2000-60000m³/h.
- 防冷桥铝合金框架结构, 双面金属保温板, 密封、隔音、保温性能卓越。
- 不同的功能部件和材料规格可供选择。
- 卧式、立式、吊顶式、射流多种结构型式。
- 风量范围: 2000~60000m³/h;

YKC 24-12 E L S 3001



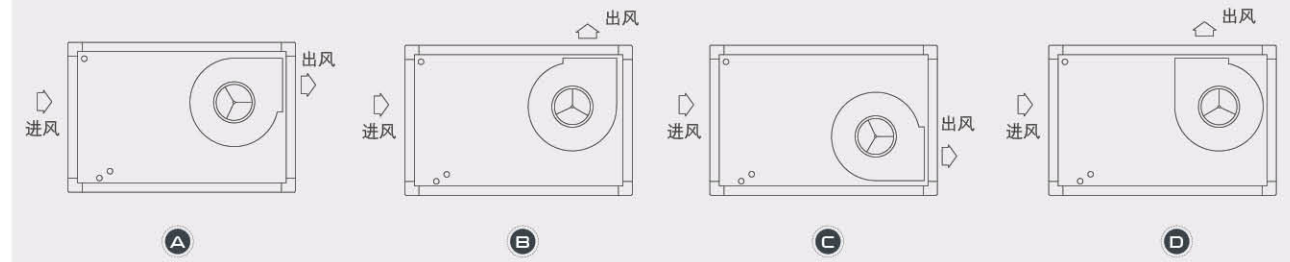
Fan direction options in vertical AHUs

立式空调箱的风机方向配置选项



Fan direction options in horizontal and ceiling type AHUs

卧式和吊顶式空调箱的风机方向配置选项



Jet flow type

射流风柜



Application

Industrial plant, shopping mall, large supermarket, logistics warehousing, airport, etc.

适用场合: 工业厂房、各类场馆、大型商超、物流仓储、候机、候车厅等。

- Easy to achieve long-distance air supply without duct.
- Space saving and low initial investment.
- Spherical tuyere with flexibly adjustable air supply angle for hot and cold air to reach required positions freely.
- Air volume range: 1000-12000m³/h.
- 该机组可轻松实现无风管远距离直接送风, 具有节省空间, 初始投入低等优点。
- 机组采用球形风口, 送风角度可以灵活调节, 让冷热风直达所需位置。
- 风量范围: 1000-12000m³/h

Model	YKC10-xx	YKC20-xx	YKC30-xx	YKC40-xx	YKC050-xx	YKC060-xx
Tuyere specification	Φ315	Φ315	Φ315	Φ315	Φ400	Φ400
Quantity	1	1	2	2	2	2
Range	~14	~21	~21	~21	~25	~24
Applicable distance	20	27	27	27	31	30

型号	YKC070-xx	YKC80-xx	YKC90-xx	YKC105-xx	YKC120-xx
风口规格	Φ400	Φ500	Φ500	Φ400	Φ500
数量	2	2	2	3	3
射程	~28	~30	~30	~28	~31
适用距离	34	36	36	34	37

AHU

风机盘管 FAN COIL UNIT



- Ceiling Conceal Ducted Type
- High Static Pressure Ducted Type

EC motor with less vibration and more energy saving.
Ingenious structure design, wide application and easy maintenance.
Large air volume, high static pressure, high efficiency and low noise.

YFCU H 45 AW 3 L 3001

- 直流无刷电机，振动小，更节能。
 - 结构设计巧妙，适用范围广，维修方便。
 - 整体冲压水盘外贴保温层，免除漏水之忧。
 - 大风量，高静压，效率高，噪声低。
- Design Code (设计序号)
Handing (接管方向): L= Left (左式), R= Right (右式)
3: 3R (三排管); 4: 4R (四排管); 31: 4 pipe (四排四管制)
AW: AC Motor (普通电机); EC: EC Motor (直流无刷电机)
45: Norminal Airflow (名义风量) (45x17=765m³/h)
H: High Static Pressure (高静压); Default (缺省): Low SP (低静压机组)
YFCU: Ecoair Fan Coil Unit (亿科艾尔风机盘管)

FCU with EC motor

FCU Model	YFCU30EC3	YFCU50EC3	YFCU60EC3	YFCU80EC3	YFCU100EC3	YFCU120EC3	YFCU140EC3
Drive Type	EC Direct	EC Direct	EC Direct	EC Direct	EC Direct	EC Direct	EC Direct
Fan Disch. Arrangement	horizontal	horizontal	horizontal	horizontal	horizontal	horizontal	horizontal
Airflow	m³/h	510	850	1020	1360	1700	2380
Airflow	l/s	142	236	283	378	472	661
External Static Pressure	Pa	50	50	50	50	50	50
Cooling capacity	kw	2.97	5.08	6.08	7.97	9.25	11.51
Heating capacity	kw	4.52	7.20	8.56	11.31	13.62	16.51
Cooling Coil Air On (DB/WB)		27.0/19.5	27.0/19.5	27.0/19.5	27.0/19.5	27.0/19.5	27.0/19.5
Cooling Coil Air Off (DB/WB)		15.70/13.98	15.46/13.83	15.49/13.85	15.66/13.96	16.35/14.39	16.02/14.18
Cooling Coil Capacity	kw	2.97	5.08	6.08	7.97	9.25	11.51
Cooling Coil Fluid Temp (ent/leaving)		7/12	7/12	7/12	7/12	7/12	7/12
Cooling Coil Water Flow	l/s	0.127	0.2179	0.261	0.341	0.394	0.491
Cooling Coil No. of Rows		3	3	3	3	3	3
Unit Width	mm	875	1100	1195	1480	1670	1935
Unit Height	mm	259	259	259	259	259	259
Unit Length	mm	522	522	522	522	522	522

FCUH with EC motor

FCU 型号	YFCUH30EC4	YFCUH45EC4	YFCUH60EC4	YFCUH80EC4	YFCUH100EC4	YFCUH140EC4	YFCUH180EC4	YFCUH200EC4
驱动方式	EC直驱	EC直驱	EC直驱	EC直驱	EC直驱	EC直驱	EC直驱	EC直驱
风机送风形式	卧式	卧式	卧式	卧式	卧式	卧式	卧式	卧式
风量	m³/h	520	765	1020	1360	1700	2380	3400
风量	l/s	144	213	283	378	472	661	944
机外静压	Pa	120	120	120	120	120	120	120
制冷量	kw	3.92	5.41	7.52	8.47	11.50	16.53	22.95
制热量	kw	5.23	7.54	10.15	12.69	16.24	19.61	31.85
冷水盘管进风干球温度		27.0/19.5	27.0/19.5	27.0/19.5	27.0/19.5	27.0/19.5	27.0/19.5	27.0/19.5
冷水盘管出风干球温度		13.21/12.14	13.87/12.66	13.44/12.32	15.03/13.57	14.28/12.99	14.04/12.79	14.51/13.16
冷水盘管制冷量	kw	3.92	5.41	7.52	8.47	11.5	16.53	22.95
冷水盘管进出水温度		7/12	7/12	7/12	7/12	7/12	7/12	7/12
冷水盘管水流量	l/s	0.167	0.231	0.320	0.365	0.492	0.706	0.982
冷水盘管排数		4	4	4	4	4	4	4
机组宽度	mm	816	1051	1286	1086	1311	1606	2091
机组高度	mm	288	288	288	338	338	338	338
机组长度	mm	556	556	556	596	596	596	596

DIRECT EXPANSION AIR CONDITIONING UNIT

直膨机组



- Air to air system, with RA&FA flexible option.
- Branded high quality components inside.
- Inverter option is available.
- Easy installation and convenience maintenance.
- For more details, pls contact us directly.
- 风风系统，工程系统设计简单、安装便利。
- 采用一线品牌零部件，系统可靠，噪音小，能效高。
- 主机可置于屋顶，无需单独机房，节省安装空间。
- 可灵活设置新风或回风工况，可满足室内空气品质的需求。
- 内机采用双板结构，外形美观，隔音隔热性能良好。
- 满足客户的各种非标定制需求。

YRT S 65-35 H L 3001

- Design Code (设计序号)
Handing (接管方向): L= Left (左式), R= Right (右式)
H: Heatpump (热泵机组); C: Cooling only (单冷机组)
35: Norminal cooling capacity (名义冷量)=35kw
65: Norminal Airflow (名义风量) (65x100=6500m³/h)
S: Split (分体式); Default (缺省): Package (整体式)
YRT: Ecoair Direct Expansion Air Conditioning Unit (亿科艾尔直膨机组)

Model	YRT56-35H	YRT80-50H	YRT112-70H	YRT144-90H	YRT168-105H	YRT192-120H
Type	Heatpump	Heatpump	Heatpump	Heatpump	Heatpump	Heatpump
Rated airflow (m³/h)	5600	8000	11200	14400	16800	19200
Designed Static Pressure (Pa)	200	200	200	200	200	200
Rated cooling (A35/W7°C)	Capacity (kw)	35	50	70	90	120
	Power (kw)	11.80	15.26	22.18	29.47	34.45
	EER	2.97	3.28	3.16	3.05	3.05
Rated heating (A7/W45°C)	Capacity (kw)	37	53	74	95	127
	Power (kw)	10.97	14.19	20.63	27.41	32.04
	COP	3.38	3.73	3.60	3.48	3.42
Noise (dBA)	66	68	68	72	72	74
Compressor	Scroll					

机组型号	YRT240-150H	YRT280-175H	YRT320-200H	YRT360-245H	YRT400-280H	YRT450-320H
机型	热泵	热泵	热泵	热泵	热泵	热泵
额定风量(m³/h)	24000	28000	32000	36000	40000	45000
设计静压(Pa)	200	200	200	200	200	200
额定制冷 (A35/W7°C)	制冷量(kw)	150	175	200	245	320
	功率(kw)	50.79	59.56	68.74	83.96	98.99
	EER	2.95	2.94	2.91	2.92	2.83
额定制热 (A7/W45°C)	制热量(kw)	159	186	212	260	297
	功率(kw)	47.23	55.39	63.93	78.08	92.06
	COP	3.37	3.35	3.32	3.33	3.22
机组噪声(dBA)	76	76	78	80	80	82
压缩机	涡旋					

Rated cooling: Ambient temperature 35°C DB/24°C WB, room temperature 27°C DB/19°C WB.
Rated heating: Ambient temperature 7°C DB/6°C WB, room temperature 20°C DB/15°C WB.
The manufacturer reserves the rights to change specifications without prior notice.
Executive standard: GB/T17758-2010.

额定制冷: 室外干/湿球温度为 35°C /24°C, 室内干/湿球温度为 27°C /19°C。
额定制热: 室外干/湿球温度为 7°C /6°C, 室内干/湿球温度为 20°C /15°C。
机型、参数、性能会因产品的改良有所改变, 具体参数请以产品实物与铭牌为准。
执行标准: GB/T17758-2010。

WATER COOLED PACKAGE UNIT

水源热泵



- Water-Air system, high efficiency, energy saving and environmental protection.
- Branded components, reliable system, low vibration and low noise.
- Easy installation and operation, smart control and full protection functions.
- Widely used in shopping malls, hotels, schools, office buildings, villas and other places.

- 水风系统，高效、节能、环保。
- 采用一线品牌零部件，系统可靠，振动低，噪音小，能效高
- 安装操作简便，控制保护功能强大。
- 广泛适用于商场、酒店、学校、写字楼、别墅等场所。

YWP I S 35 V H L 3001

Design Code (设计序号)
 Handing (接管方向): L=Left (左式), R=Right (右式)
 H: Heatpump (热泵机组); C: Cooling only (单冷机组)
 V: Vertical (立式); Default (缺省): Horizontal (卧式)
 35: Norminal cooling capacity (名义冷量) (35/10=3.5kw)
 S: Split (分体式); Default (缺省): Package (整体式)
 I: Inverter (变频); Default (缺省): On/Off (定频)
 YWP: Ecoair Water Cooled Package Unit (亿科艾尔水源热泵)

Horizontal Model	单位	YWP35H	YWP44H	YWP59H	YWP81H	YWP99H	YWP122H	YWP147H
Norminal cooling capacity	kw	3.5	4.4	5.9	8.1	9.9	12.2	14.7
Norminal heating capacity	kw	3.7	4.6	5.4	8.9	11.1	11.9	14.8
Norminal Airqty	l/s	190	230	320	500	560	620	775
Rated ESP	Pa	150	150	150	150	150	150	150
COP		> 3.8						> 4.0
Refrigerant		R410A	R410A	R410A	R410A	R410A	R410A	R410A

卧式机组型号	单位	YWP185H	YWP212H	YWP255H	YWP275H	HWP 366H	YWP 445H
名义制冷量	kw	18.5	21.2	25.5	27.5	36.6	44.5
名义制热量	kw	16.4	18.6	23	24.6	34.9	42.2
名义风量	l/s	1015	1160	1220	1400	1900	2300
额定机外静压	Pa	150	150	150	150	150	150
COP		> 4.0				> 3.7	
制冷剂		R410A	R410A	R410A	R410A	R410A	R410A

Vertical Model	单位	YWP63VH	YWP83VH	YWP96VH	YWP109VH	YWP132VH	YWP178VH	YWP217VH
Norminal cooling capacity	kw	6.3	8.3	9.6	10.9	13.2	17.8	21.7
Norminal Airqty	l/s	380	490	570	600	770	920	1210
Rated ESP	kw	6.63	8.34	9.58	10.27	11.9	16.41	20.54
COP		> 3.8						
Refrigerant		R410A	R410A	R410A	R410A	R410A	R410A	R410A

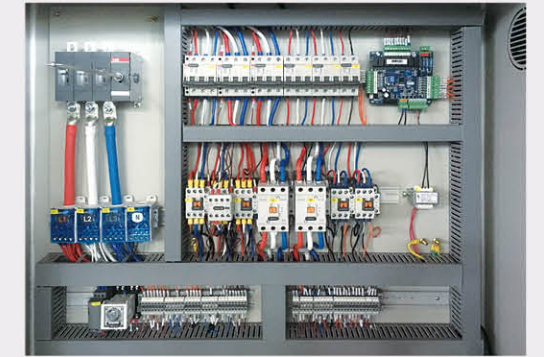
立式机组型号	单位	YWP263VH	YWP374VH	YWP447VH	YWP575VH	YWP890VH	YWP1016VH
名义制冷量	kw	26.3	37.4	44.7	57.5	89	101.6
名义风量	l/s	1535	1940	2315	2935	4800	4960
名义制热量	kw	23.8	35.5	46.63	54.94	84.4	98.6
COP		> 3.8					
制冷剂		R410A	R410A	R410A	R410A	R410A	R410A

Remark: 1. Rated cooling and heating capacities are tested on basis of below working conditions:
 1) Cooling: 27°C DB/19°C WB indoor air, 25°C entering and 30°C leaving water temperature.
 2) Heating: 20°C DB/15°C WB indoor air, 10°C entering water temperature, same waterflow rate as cooling cycle.
 2. The manufacturer reserves the rights to change specifications without prior notice.

备注: 1. 额定制冷量和制热量的测试基于以下工况:
 a) 制冷: 27°C /19°C室内空气干/湿球温度, 25°C进水温度, 30°C出水温度。
 b) 制热: 20°C /15°C室内空气温度, 10°C进水温度, 水流量同制冷工况。
 2. 所有参数都会随产品改良而更改, 恕不另行通知, 请以机器上的铭牌标签为准。

INTELLIGENT CONTROL SYSTEM

智能控制系统



- Customization.
- Man-machine interface touch screen and easy operation.
- Modbus, profibus and other communication protocols supportable.
- Control and monitoring via industrial computer and Ethernet.

- 可根据用户需求量身设计控制系统编辑程序。
- 可搭配人机界面触摸屏, 达到轻松操作的目的。
- 可与 DCS 总线上位机 modbus、profibus 等通讯协议进行数据传输。
- 可通过工控机、以太网等实现控制和监控。



DISPLAY 显示屏

- Easy operation
- Friendly interface
- 操作简便
- 界面友好
- Rich in information
- Quick response
- 信息丰富
- 响应迅速
- Safety & reliability
- Good expansibility
- 安全可靠
- 扩充性好
- Dynamic networking
- 动态联网



PLC

- High performance and large capacity to meet increasingly complex requirements.
- Rich logic control functions for accurate action.
- Flexible network features, supports Ethernet, CANopen and CANlink to connect information and automation seamlessly.
- Other protocols such as Modbus and monitoring are supported.
- 高性能, 大容量, 轻松应对日益复杂的工艺需求
- 丰富的逻辑控制功能, 让设备精准动作。
- 灵活的网路特性, 支持以太网、CANopen、CANlink, 让信息化与自动化无缝连接
- 支持 MODBUS、监控等其他协议



TEMP & HUM SENSOR 温湿度传感器

- Accurately measures temperature and humidity.
- 精准测量温度和湿度。



ISOLATOR SWITCH 隔离开关

- A device used to interrupt the current. It is commonly used as a safety measure against electric shock
- 配电装置中需要停电的部分与带电部分可靠地隔离, 以保证检修工作的安全。



CONTACTOR 接触器

- A device that can quickly cut off the main AC and DC circuits and frequently switch on and off large current control circuits.
- 可快速切断交流与直流主回路且可频繁地接通与关断大电流控制电路的装置。



CIRCUIT BREAKER 断路器

- An electrical switch designed to protect an electrical circuit from damage caused by an overcurrent or overload or a short circuit.
- 负荷电路接通或者是将它切断, 对线路起到保护作用, 当线路出现严重过载时, 会自动切断。



WIRING TERMINAL 接线端子

- Making the electrical connection more convenient.
- 让电气连接更便捷。



ALUMINUM ALLOY RAIL ANTIFLAMING TRUNKING 铝合金导轨和阻燃线槽

铝合金导轨和阻燃线槽

PROJECT CASE

工程案例



- Rail & traffic
轨道交通
- Medical purification
医疗净化
- Shopping malls
商场
- Hotels
酒店

我们的所有成就，都起始于每一次的不将就！

ECOAIR
亿科艾尔

ECOAIR ENVIRONMENTAL TECHNOLOGY