

CHAER

21 years / 1999-2020
Focus makes CHAER different.

Let us make things better.

2020

CHAER® 卡尔

CHAER (China)Technology Co., Ltd.

Add: 230, Wei 230 Road, Economic Development Zone,
Yueqing, Zhejiang
TEL : +86 577 62703588
FAX : +86 577 62708087
www.chaer-china.com
https://cnkaer.en.alibaba.com/?spm=a2700.shop_cp.88.27



CHAER® 卡尔

DIN steel (aluminium) mounting rail, busbar, cable lug, terminal blocks, accessories

Let us make things better.

Electrical installation is easy!

Mounting
makes
connection
smooth.

1999-2019, 20 years of perseverance against hardship.



Steel (aluminium) DIN rail series

Electrical busbar series

Cable lugs

Other accessories



About CHAER TECHNOLOGY CO., LTD.

Catalogue

Founded in 1999, CHAER Technology Co., Ltd. is people-oriented, pro-technology and pro-honesty & trust, which lays a firm foundation for future growth.

As a professional thriving manufacturer, our leading product line covers cable lugs, mounting rails, electrical busbars, and terminal blocks. "Complete product series with better performance, better productivity, high cost-effective, and easier operation" is our goal. We prepare and put in effect internal standards which are stricter. We have a professional quality team that has strict control on every link, from R & D, design, raw material purchase, metal part manufacturing, plastic part formation, finished product assembly, inspection, packaging and to delivery. Marketing based production, our products are applied in automation worldwide. We take an active attitude toward introducing advanced technologies to keep innovation and growth. Our facilities include 50 sets of advanced automated hole-punching & rolling machines and 10+ sets of high speed punching machine. Our electric-plating division was set up in 2013. It has several environmentally-friendly automated surface plating processing lines. That provides assurance for product quality and selection. We follow TUV ISO9001 quality management system and ISO14001 environmental management system. Our products conform to RoHS requirements.

"High quality product and better service" is always our philosophy. We believe we will have broader growth in the future through our effort and your care & support.



SC (DTGA) Inspection-hole Copper Lug	01	PT General Aluminium Mounting Rail	11
JG (DTGY) Ship-purpose Copper Lug	03	GB National Standard Steel Mounting Rail	13
OT (Open tube) Copper Lug	03	Rail Accessories	14
C45 Insert-in Lug	04	Rail for Distribution Box	15
DTL Copper-aluminium Lug	04	HRQ Rail Cutter	16
DT Copper Lug	05	K Steel Mounting Rail	19
DL Aluminium Lug (sealing)	05	K Aluminium Mounting Rail	23
GT-G Copper Ferrule (though-hole)	06	K Busbar	27
GL-G Aluminium Ferrule (though-hole)	06	K Terminal Blocks	37
DTS Two-hole Copper Lug	07		
DT(G) Copper Lug	08		
PT General Steel Mounting Rail	11		

K K Cable Lugs



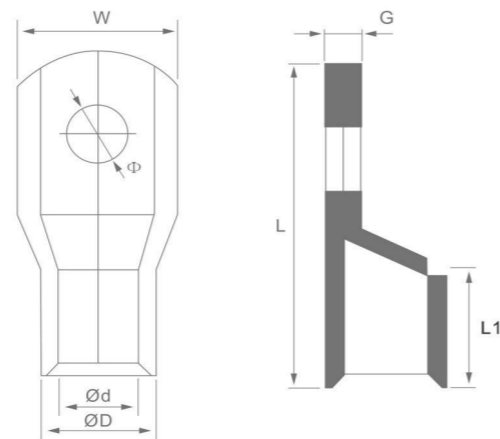
SC (DTGA) Inspection-hole Copper Lug



SC(DTGA) Cable lug (tube)

Model	Dimension							
	D±0.2	d±0.2	G±0.3	L±1.5	L1±1	W±1	Ø±0.5	Wall thickness
SC2.5-4	4.0	2.5	0.7	19	-	8.0	4.5	0.75
SC2.5-5	4.0	2.5	0.7	19	-	8.5	5.3	0.75
SC2.5-6	4.0	2.5	0.6	19	-	8.5	6.2	0.75
SC4-4	4.8	3.2	0.9	20	-	8.2	4.5	0.80
SC4-5	4.8	3.2	0.9	20	-	8.5	5.3	0.80
SC4-6	4.8	3.2	0.8	20.5	-	9.5	6.3	0.80
SC6-5	5.5	3.8	1.4	25	9	9.0	5.3	0.85
SC6-6	5.5	3.8	1.4	25	9	10.0	6.2	0.85
SC6-8	5.5	3.8	1.4	25	9	10.0	6.2	0.85
SC10-5	6.5	4.7	1.6	26	9	10.0	5.5	0.90
SC10-6	6.5	4.7	1.6	26	9	10.5	6.3	0.90
SC10-8	6.5	4.7	1.5	26	9	11.0	8.2	0.90
SC16-6	7.5	5.5	2.0	31	11	11.0	6.5	1.00
SC16-8	7.5	5.5	1.8	31	11	11.0	8.4	1.00
SC16-10	7.5	5.5	1.6	31	11	13.5	10.2	1.00
SC25-6	9.0	6.7	2.2	35	13	13.0	6.5	1.15
SC25-8	9.0	6.7	2.1	35	12	13.0	8.4	1.15
SC25-10	9.0	6.7	2.0	35	13	14.5	10.2	1.15
SC35-6	10.5	8.0	2.5	39	15	15.5	6.5	1.25
SC35-8	10.5	8.0	2.5	39	15	15.5	8.5	1.25
SC35-10	10.5	8.0	2.5	39	16	15.5	10.4	1.25
SC35-12	10.5	8.0	2.3	39	16	16.5	12.3	1.25
SC50-6	12.5	9.6	2.8	45	17	18	6.5	1.45
SC50-8	12.5	9.6	2.8	45	17	18	8.5	1.45
SC50-10	12.5	9.6	2.8	45	17	18	10.5	1.45
SC50-12	12.5	9.6	2.8	45	17	18	12.5	1.45
SC70-8	14.5	11.1	3.4	49	20	21	8.5	1.7
SC70-10	14.5	11.1	3.4	49	20	21	10.5	1.7
SC70-12	14.5	11.1	3.4	49	20	21	12.5	1.7

Product Dimension mm

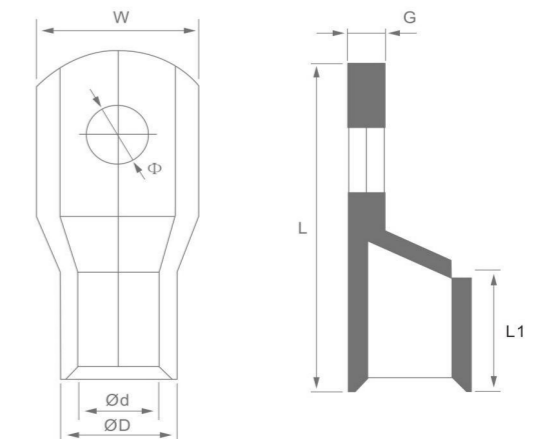


SC(DTGA) Cable lug (tube)



Model	Dimension							
	D±0.2	d±0.2	G±0.3	L±1.5	L1±1	W±1	Ø±0.5	Wall thickness
SC95-8	17.5	13.6	3.9	55	21	25	8.5	1.95
SC95-10	17.5	13.6	3.9	55	21	25	10.5	1.95
SC95-12	17.5	13.6	3.9	55	21	25	12.5	1.95
SC95-14	17.5	13.6	3.9	55	21	25	14.5	1.95
SC120-8	19.5	15.1	3.8	60	23	28	8.5	2.2
SC120-10	19.5	15.1	3.8	60	23	28	10.5	2.2
SC120-12	19.5	15.1	3.8	60	23	28	12.5	2.2
SC120-14	19.5	15.1	3.8	60	23	28	14.5	2.2
SC150-10	21.0	16.4	4.6	68	27	30.5	10.5	2.3
SC150-12	21.0	16.4	4.6	68	27	30.5	12.5	2.3
SC150-14	21.0	16.4	4.6	68	27	30.5	14.5	2.3
SC150-16	21.0	16.4	4.6	68	27	30.5	16.5	2.3
SC185-10	24.0	19.0	5.0	75	32	34	10.5	2.5
SC185-12	24.0	19.0	5.0	75	32	34	12.5	2.5
SC185-14	24.0	19.0	5.0	75	32	34	14.5	2.5
SC185-16	24.0	19.0	5.0	75	32	34	16.5	2.5
SC240-12	26.0	21.0	5.5	90	37	37	12.5	2.5
SC240-14	26.0	21.0	5.5	90	37	37	14.5	2.5
SC240-16	26.0	21.0	5.5	90	37	37	16.5	2.5
SC240-18	26.0	21.0	5.5	90	37	37	18.5	2.5
SC300-12	30.0	24.0	6.5	100	41	43	12.5	3.0
SC300-14	30.0	24.0	6.5	100	41	43	14.5	3.0
SC300-16	30.0	24.0	6.5	100	41	43	16.5	3.0
SC300-18	30.0	24.0	6.5	100	41	43	18.5	3.0
SC300-20	30.0	24.0	6.5	100	41	43	20.5	3.0
SC400-14	34.0	27.0	8.0	114	46	46	14.5	3.5
SC400-16	34.0	27.0	8.0	114	46	46	16.5	3.5
SC400-18	34.0	27.0	8.0	114	46	46	18.5	3.5
SC400-20	34.0	27.0	8.0	114	46	46	20.5	3.5
SC500-16	38.0	30.0	8.5	124	50	56	18.5	3.5
SC500-20	38.0	30.0	8.5	124	50	56	21.0	3.5
SC630-16	45.0	35.0	10.0	144	56	64	18.5	3.5
SC630-20	45.0	35.0	10.0	144	56	64	21.0	3.5

Product Dimension mm



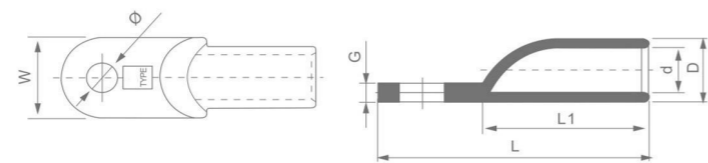
JG (DTGY) Ship-purpose Copper Lug



JG(DTGY) Cable lug (tube)

Model	Dimension							Wall thickness
	D±0.2	d±0.2	G±0.3	L±1.5	L1±1	W±1	Φ±0.5	
JG10-6	8	5.6	2.5	38	21	12	6.5	1.2
JG10-8	8	5.6	2.3	38	21	13	8.5	1.2
JG16-6	9	6.4	3.0	40	23	13	6.5	1.3
JG16-8	9	6.4	3.0	40	23	13	8.5	1.3
JG25-6	10	7.3	2.8	45	25	14	6.5	1.35
JG25-8	10	7.3	2.8	45	25	14	8.5	1.35
JG35-8	11	8.2	3.0	50	28	15	8.5	1.4
JG35-10	11	8.2	2.8	50	28	16	10.5	1.4
JG50-8	13	10	3.0	54	30	19	8.5	1.5
JG50-10	13	10	3.0	54	30	19	10.5	1.5
JG70-8	16	12	3.7	61	33	23	8.5	1.5
JG70-10	16	12	3.7	61	33	23	10.5	2.0
JG95-8	18	14	4.2	67	36	26	8.5	2.0
JG95-10	18	14	4.2	67	36	26	10.5	2.0
JG95-12	18	14	4.2	67	36	26	12.5	2.0
JG120-10	20	16	4.8	75	43	29	10.5	2.0
JG120-12	20	16	4.8	75	43	29	12.5	2.0
JG120-14	20	16	4.8	75	43	29	14.5	2.0
JG120-16	20	16	4.8	75	43	29	16.5	2.0
JG150-10	22	17	4.0	91	57	32	10.5	2.5
JG150-12	22	17	4.0	91	57	32	12.5	2.5
JG150-14	22	17	4.0	91	57	32	14.5	2.5
JG150-16	22	17	4.0	91	57	32	16.5	2.5
JG185-10	24	19	5.0	96	59	35	10.5	2.5
JG185-12	24	19	5.0	96	59	35	12.5	2.5
JG185-14	24	19	5.0	96	59	35	14.5	2.5
JG185-16	24	19	5.0	96	59	35	16.5	2.5
JG240-12	26	21	5.0	96	62	39	13.0	2.5
JG240-14	26	21	5.0	96	62	39	15.0	2.5
JG240-16	26	21	5.0	96	62	39	17.0	2.5
JG240-20	26	21	5.0	96	62	39	21.0	2.5
JG300-12	30	24	6.0	103	67	43	13.0	2.5
JG300-14	30	24	6.0	103	67	43	15.0	2.5
JG300-16	30	24	6.0	103	67	43	17.0	2.5
JG300-20	30	24	6.0	103	67	43	21.0	2.5

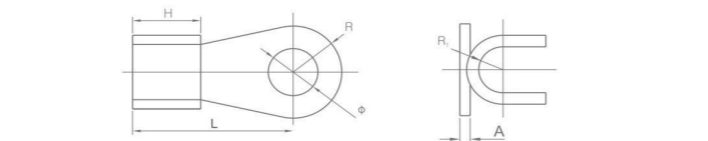
Product Dimension mm



OT Open Tube Copper Lug

Model	Dimension					
	Φ	H	L	R	R1	A
OT-10A	5.2	6.0	19.0	4.5	2.0	0.8
OT-20A	6.5	7.0	22.5	5.5	2.5	1.0
OT-30A	6.5	8.2	24.8	5.8	3.2	1.2
OT-40A	6.5	9.0	25.7	6.2	3.5	1.2
OT-50A	8.2	9.0	29.5	6.5	3.5	1.2
OT-60A	8.5	10.0	30.0	7.0	4.0	1.4
OT-80A	8.5	11.0	33.0	8.0	4.5	1.5
OT-100A	8.5	12.0	37.5	8.5	5.0	1.5
OT-150A	10.5	12.0	40.0	9.0	5.5	1.6
OT-200A	10.5	14.0	43.0	10.0	6.0	1.7
OT-250A	10.5	15.5	46.5	10.5	6.5	2.0
OT-300A	12.5	16.0	51.5	11.5	7.0	2.0
OT-400A	14.5	18.0	56.0	13.0	8.0	2.2
OT-500A	14.5	20.0	60.5	14.5	8.5	2.4
OT-600A	16.5	22.0	66.5	16.0	10.5	2.8
OT-800A	18.5	26.0	78.5	17.5	14.0	3.2
OT-1000A	18.5	33.0	86.5	20.5	15.5	3.8

Product Dimension mm



C45 Insert-in Lug



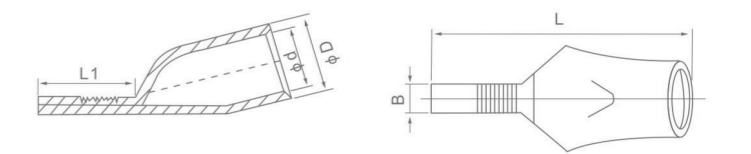
C45 (A) Insert-in Lug (tube)

Model	Dimension					Wall thickness
	D±0.3	d±0.3	L±1.5	L1±1	B±0.3	
C45-4 ²	4.8	3.2	25	10.0	4.5	0.8
C45-6 ²	6.0	4.0	27	10.3	4.8	1.0
C45-10 ²	7.5	5.1	32	12.5	6.5	1.2
C45-16 ²	8.5	6.0	34	13.5	6.8	1.25
C45-25 ²	10	7.3	36	14.0	6.8	1.35
C45-35 ²	11	8.2	38	14.5	6.8	1.4
C45-50 ²	13	10.0	42	15.0	6.8	1.5
C45-70 ²	16	12.0	49	16.0	7.0	2.0
C45-95 ²	18	14.0	55	20.0	7.0	2.0

C45 (B)

C45-10 ²	6.5	5.1	32	12.5	6.5	0.7
C45-16 ²	7.5	5.9	34	13.5	6.8	0.8
C45-25 ²	9.0	7.2	36	14.0	6.8	0.9
C45-35 ²	10.5	8.5	38	14.5	6.8	1.0
C45-50 ²	12.5	10.1	42	15.0	6.7	1.2

Product Dimension mm



Introducing C45 insert-in lug production, made of T2 copper, surface tin-plated.

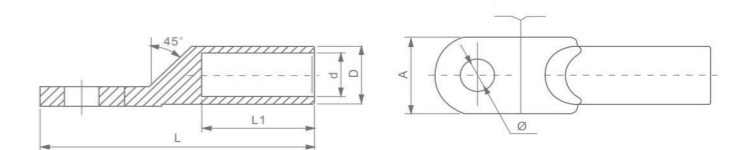
DTL Copper-aluminium Lug



DTL Cable lug

Model	Dimension					
	Ø	D	d	L	L1	A
DTL-10		10	5.5	68	30	15.8
DTL-16		11	6.5	70	32	15.8
DTL-25	8.5	12	7.4	75	36	18
DTL-35		14	8.4	85	40	19.7
DTL-50	10.5	16	10	90	41	23
DTL-70		18	11.8	102	47	26
DTL-95	13.0	21	13.5	112	51	28
DTL-120		23	15.0	120	56	30
DTL-150	15.0	25	17	126	57	34
DTL-185		27	19.0	133	60	37
DTL-240	17	30	21.0	140	62	40
DTL-300		34	23.5	158	66	50
DTL-400		38	27	170	72	50
DTL-500	21	42	29.2	180	77	60
DTL-630		52	34.5	222	80	60
DTL-630	Square palm	52	34.5	225	80	78
DTL-800		60	38.5	270	90	100

Product Dimension mm

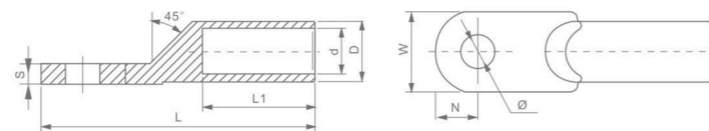


DT Copper Lug



Model	Dimension								
	D±0.3	d±0.3	L ±1.5	L1±1.5	S±0.3	N±0.5	W±0.5	Ø±0.3	Wall thickness
DT-10 ²	9	5.8	63	30	2.4	8	16	8.5	1.6
DT-16 ²	10	6.5	65	32	2.6	8	16	8.5	1.75
DT-25 ²	11	7.5	70	35	3.0	9	18	8.5	1.75
DT-35 ²	12	8.7	80	38	3.2	10	20	10.5	1.75
DT-50 ²	14	10.0	85	42	3.4	11.5	23	10.5	2.0
DT-70 ²	16	12.0	95	47	4.0	13	26	12.5	2.0
DT-95 ²	18	14.0	103	48	4.5	14	28	12.5	2.0
DT-120 ²	20	15.5	111	52	4.8	15	30	14.5	2.25
DT-150 ²	22	17.0	121	56	5.5	17	34	14.5	2.5
DT-185 ²	25	19.0	125	59	6.0	18	38	16.5	3.0
DT-240 ²	27	21.5	135	60	6.8	20	40	16.5	2.75
DT-300 ²	30	23.5	152	68	7.3	25	50	21.0	3.25
DT-400 ²	34	27.0	170	76	8.5	28	55	21.0	3.5
DT-500 ²	38	29.0	186	86	9.0	31	55	21.0	3.75
DT-630 ²	45	35.0	210	86	9.0	31	80	21.0	3.75

Product Dimension mm

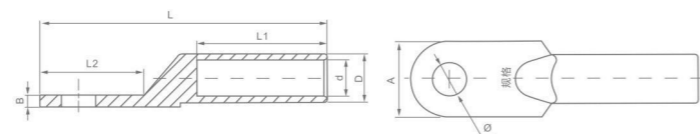


DL Aluminium Lug (sealing)



Model	Dimension					
	Ø	D	d	L	L1	A
DL-10	9	5.5	64	30	15.8	
DL-16	8.5	10	6.2	67	32	15.8
DL-25	12	7.4	75	34	18	
DL-35	10.5	14	8.5	85	36	19.7
DL-50	12.5	16	10.0	90	40	23
DL-70	14.5	18	11.8	102	42	26
DL-95	12.5	21	13.5	112	46	28
DL-120	14.5	23	15.0	120	53	30
DL-150	17	25	17.0	126	56	34
DL-185	17	27	19.0	133	58	37
DL-240	21	30	21.0	140	60	40
DL-300	21	34	23.5	160	65	50
DL-400	21	38	27	170	72	50
DL-500	21	42	29.2	180	75	60
DL-630	Square palm	54	34.5	225	80	78
DL-800	Square palm	60	38.6	270	90	100

Product Dimension mm

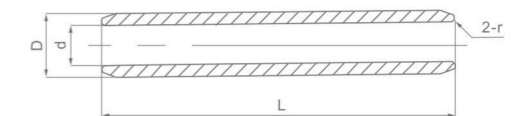


GT-G Copper Tube



Model	Dimension			Wall thickness
	D	d	L	
GT-G-10	8	5.6	44	1.2
GT-G-16	9	6.4	56	1.3
GT-G-25	10	7.3	60	1.35
GT-G-35	11	8.2	64	1.4
GT-G-50	13	10	72	1.5
GT-G-70	16	12	78	2.0
GT-G-95	18	14	82	2.0
GT-G-120	20	16	90	2.0
GT-G-150	22	17	94	2.5
GT-G-185	24	19	100	2.5
GT-G-240	26	21	110	2.5
GT-G-300	30	24	120	3.0
GT-G-400	34	27	140	3.5
GT-G-500	38	30	175	4.0
GT-G-630	45	35	210	4.5

Product Dimension mm

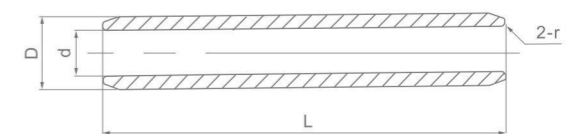


GL-G Aluminium Tube



Model	Dimension			
	D	d	L	r
GL-G-16	10	6	65	0.8
GL-G-25	12	7	70	1
GL-G-35	14	9	75	1
GL-G-50	16	10	80	1.2
GL-G-70	18	12	90	1.2
GL-G-95	21	14	95	1.5
GL-G-120	23	15	100	1.5
GL-G-150	25	17	105	1.8
GL-G-185	27	19	110	1.8
GL-G-240	30	21	120	1.8
GL-G-300	34	23	130	1.8
GL-G-400	38	27	140	2
GL-G-500	40	30	168	2.2
GL-G-630	54	34	170	4

Product Dimension mm



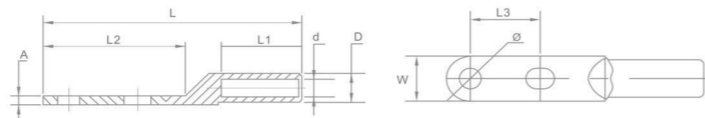
DTS Two-hole Copper Lug / DT(G) Copper Lug



DTS Cable lug

Model	Dimension							
	D	d	L	L1	L2	L3	W	Ø
DTS-35	12	8.5	112	36	56	32	22	10.5
DTS-50	14	9.8	118	40	58	32	22	10.5
DTS-70	16	11.5	125	42	62	32	26	12.5
DTS-95	18	13.5	132	46	64	32	28	12.5
DTS-120	20	15	138	48	65	32	30	12.5
DTS-150	22	16.5	145	52	70	32	34	12.5
DTS-185	25	18.5	155	55	73	32	37	12.5
DTS-240	27	21	165	60	75	32	40	12.5
DTS-300	30	24	185	65	86	40	50	17
DTS-400	34	26.5	190	65	88	40	50	17

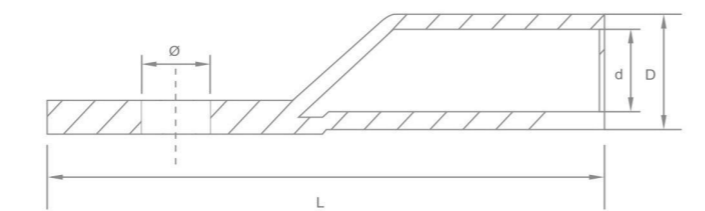
Product Dimension mm



DT(G) Cable lug (tube)

Model	Dimension			
	D	d	L	Ø
DT(G)-10	8	5	52	6.5
DT(G)-16	9	6	57	6.5
DT(G)-25	10	7	62	8.5
DT(G)-35	11	8	66	8.5
DT(G)-50	13	10	72	8.5
DT(G)-70	16	12	80	10.5
DT(G)-95	18	14	85	10.5
DT(G)-120	19	15	96	12.5
DT(G)-150	23	17	102	12.5
DT(G)-185	24	19	114	17
DT(G)-240	26	21	120	17
DT(G)-300	31	24	135	18.5
DT(G)-400	34	26	150	18.5
DT(G)-500	38	30	170	20.5
DT(G)-630	45	35	210	22.5

Product Dimension mm



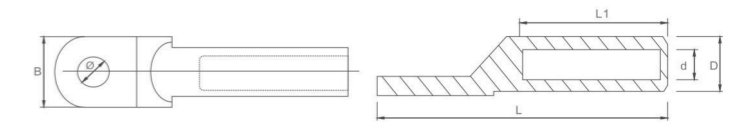
Small-palm Copper Lug/Copper-Aluminium Copper Lug (Two-hole) Special for moulded case circuit breaker



Small-palm Copper Lug Cable lug

Model	Dimension						
	D	d	L	L1	T	B	Ø
10	9	5.6	61	35	2.0	16	8.4
16	10	6.5	68	38	2.0	16	8.4
25	11	7.5	76	40	3.0	16	8.4
35	12	8.5	77	38	3.2	16	8.4
50	13	10	80	43	3.3	16	8.4
70	15	12	85	45	3.4	16	8.4
95	17	13.6	90	45	4.0	16	8.4
120	19	15.4	96	50	4.3	16	8.4
150	21	16	100	54	4.5	16	8.4
185	23	18	115	60	5.3	16	8.4
240	26	21	120	64	5.3	16	8.4

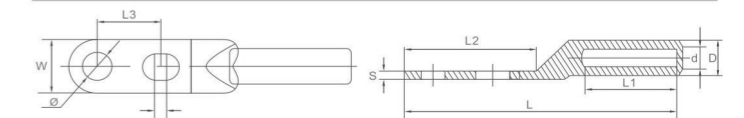
Product Dimension mm

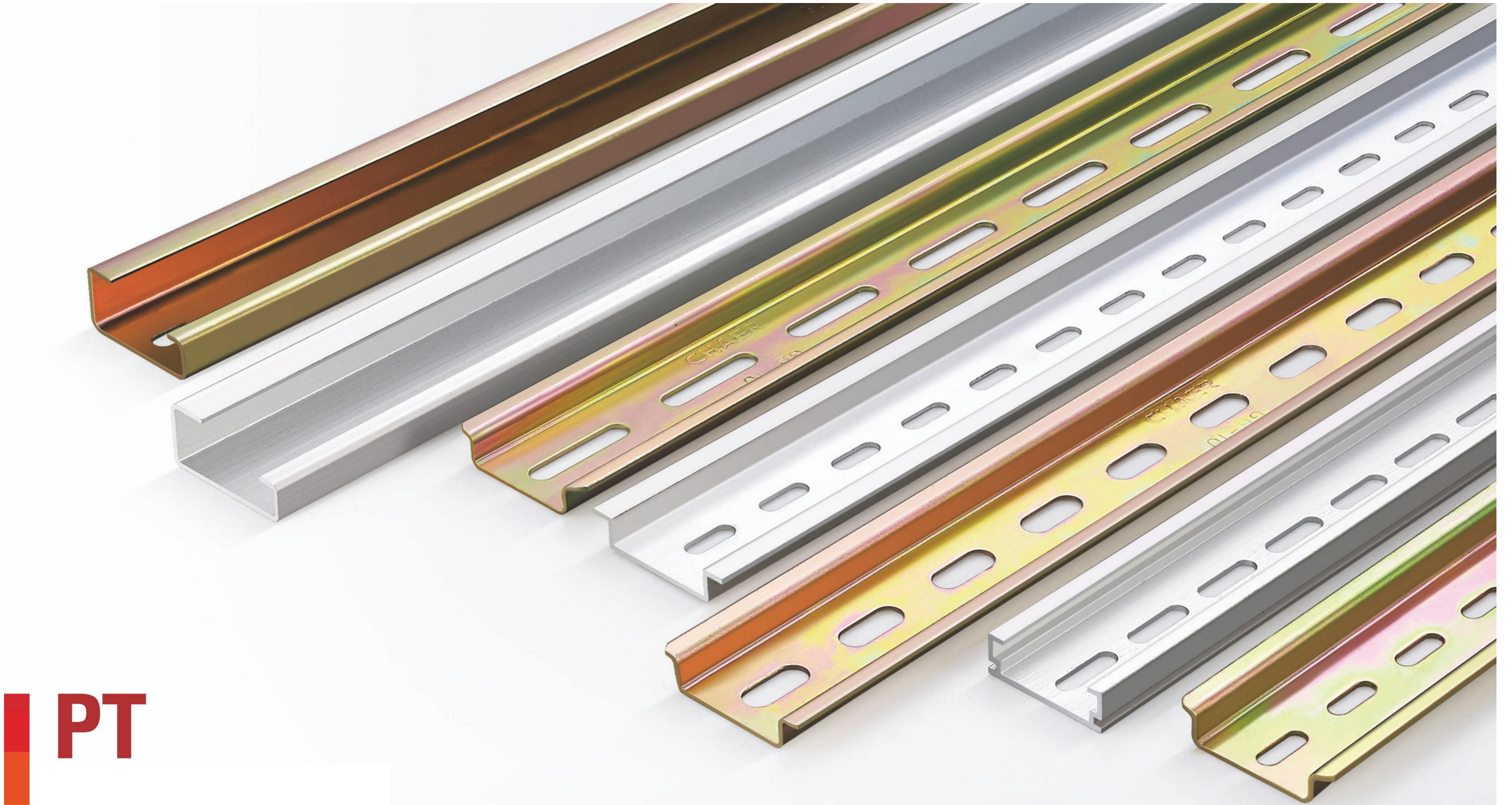


Copper-Aluminium Copper Lug (Two-hole) Cable lug

Model	Dimension								
	D	d	L	L1	L2	L3	W	Ø	S
DTL-16S	10	5.5	90	32	45	20	18	8.4	3.0
DTL-25S	12	7.0	93.5	38	44	20	18	8.4	3.2
DTL-35S	14	8.5	104	42	48.5	20	20	10.5	3.6
DTL-50S	16	9.5	112	46	50	20	23	10.5	4.0
DTL-70S	18	12.0	125	47	59	25	26	12.5	4.5
DTL-95S	21	13.0	136	53	60	25	28	12.5	4.8
DTL-120S	23	15.0	145	55	69	30	30	14.5	5.5
DTL-150S	25	16.0	150	55	70	30	34	14.5	6.0
DTL-185S	27	18.0	162	62	76	35	37	14.5	6.5
DTL-240S	30	20.0	170	65	78	35	40	14.5	7.0
DTL-300S	34	23.0	190	72	87	40	45	16.5	8.5
DTL-400S	38	26.0	195	75	87	40	50	16.5	8.5
DTL-500S	42	29.5	225	80	110	45	60	21	9.5

Product Dimension mm

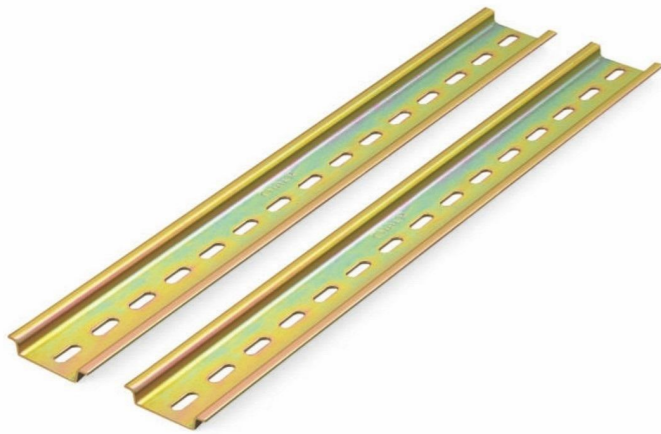




PT

PT General Steel (Aluminium) Mounting Rail

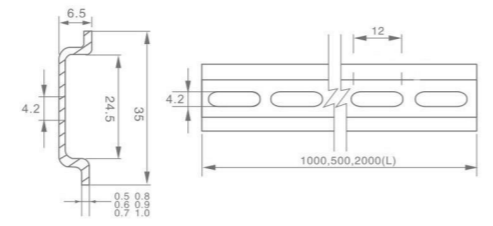
PT General Steel Mounting Rail



PT-05/06/07/08/09/10 Top Hat Section Rail

Model	TH35-6.5
Thickness	(0.5) (0.6) (0.7) (0.8) (0.9) (1.0)
Bolt hole size	4.2 × 12
Standard length	0.5m / 1m / 2m
Carton size / quantity	102x22x10CM / 100m
Weight kg	0.5mm/15KG 0.6mm/17KG 0.7mm/20.5KG 0.8mm/25KG 0.9mm/27KG 1.0mm/30KG

Product Dimension mm



Note: customization for bolt hole sizes and lengths offered.

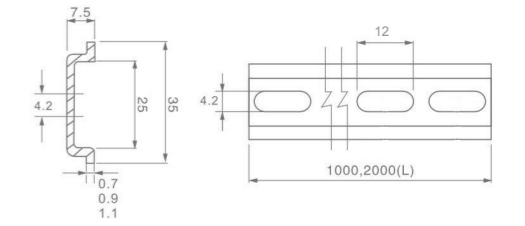
PT General Aluminium Mounting Rail



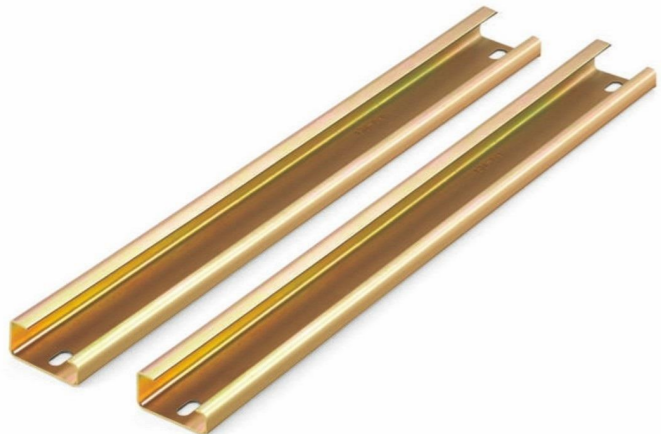
PT-07L/09L/11L Aluminium Top Hat Sectional Rail

Model	TH35-7.5
Thickness	(0.7) (0.9) (1.1)
Bolt hole size	4.2 × 12
Standard length	1m / 2m
Carton size / quantity	102x22x10CM / 100m
Weight kg	0.7mm/8.6KG 0.9mm/10.5KG 1.1mm/13.2KG

Product Dimension mm



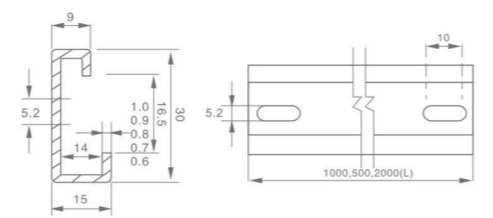
Note: customization for bolt hole sizes and lengths offered.



GD-06/07/08/09/10 G Section Rail

Model	TH30-15/9
Thickness	(0.6) (0.7) (0.8) (0.9) (1.0)
Bolt hole size	5.2 × 10
Standard length	0.5m / 1m
Carton size / quantity	102x22x18CM / 100m
Weight kg	0.6mm/30KG 0.7mm/34KG 0.8mm/38KG 0.9mm/42KG 1.0mm/47KG

Product Dimension mm



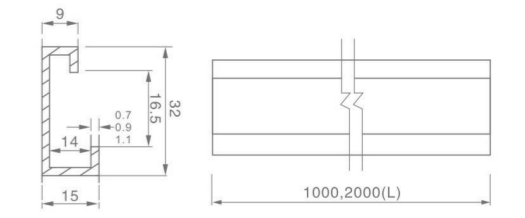
Note: customization for bolt hole sizes and lengths offered.



GD-07L/09L/11L Aluminium G Section Rail

Model	TH30-15/9
Thickness	(0.7) (0.9) (1.1)
Bolt hole size	N/A
Standard length	1m
Carton size / quantity	102x20x18CM / 100m
Weight kg	0.7mm/11.5KG 0.9mm/14.6KG 1.1mm/18.2KG

Product Dimension mm



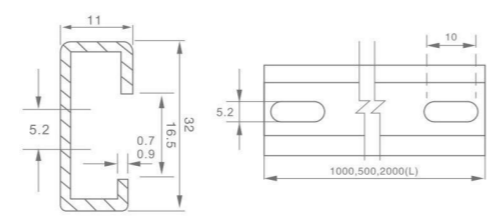
Note: customization for bolt hole sizes and lengths offered.



NJD-07/09 NJD Rail

Model	TH32-11
Thickness	(0.7) (0.9)
Bolt hole size	5.2 × 10
Standard length	1m / 2m
Carton size / quantity	102x22x10CM / 100m
Weight kg	0.7mm/32KG 0.9mm/40KG

Product Dimension mm



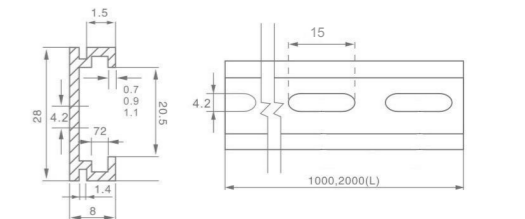
Note: customization for bolt hole sizes and lengths offered.



TD-07L/09L/11L Aluminium TD Rail

Model	TH21-8
Thickness	(0.7) (0.9) (1.1)
Bolt hole size	4.2 × 15
Standard length	1m
Carton size / quantity	102x22x10CM / 100m
Weight kg	0.7mm/9.2KG 0.9mm/10.8KG 1.1mm/14KG

Product Dimension mm



Note: customization for bolt hole sizes and lengths offered.

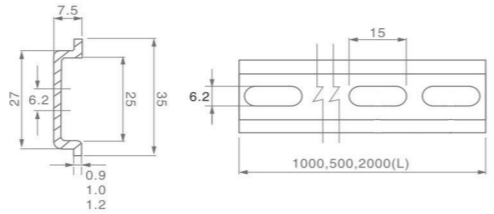
GB National Standard Steel Mounting Rail



GB-09/10/12 Top Hat Section Rail (national standard)

Model	TH35-7.5
Thickness	(0.9) (1.0) (1.2)
Bolt hole size	6.2x15
Standard length	0.5m / 1m / 2m
Carton size / quantity	102x22x10CM / 100m
Weight kg	0.9 m/30KG 1.0 m/32KG 1.2 m/37KG

Product Dimension mm

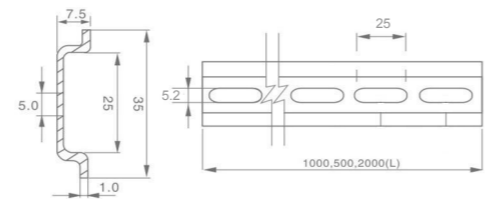


Note: customization for bolt hole sizes and lengths offered.

GB-10 Top Hat Section Rail (national standard)

Model	TH35-7.5
Thickness	(0.9) (1.0) (1.2)
Bolt hole size	5.2x25
Standard length	0.5m / 1m / 2m
Carton size / quantity	102x22x10CM / 100m
Weight kg	1.0m/32KG

Product Dimension mm

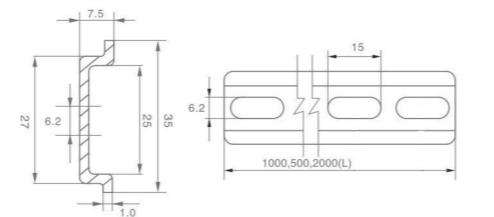


Note: customization for bolt hole sizes and lengths offered.

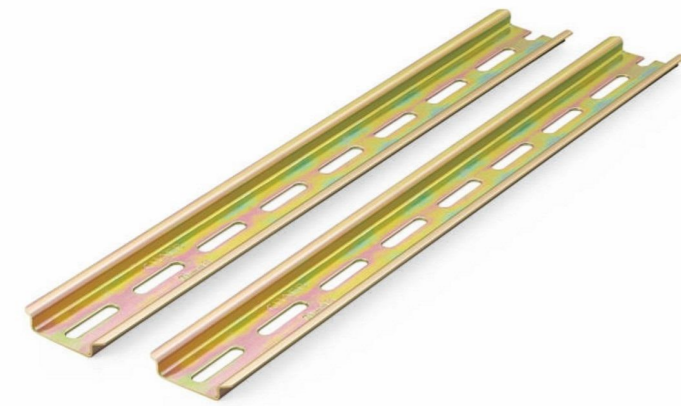
8500 Environmentally-friendly Blue-white Top Hat Section Rail

Model	TH35-7.5
Thickness	(1.0)
Bolt hole size	6.2 x 15
Standard length	1m / 2m
Carton size / quantity	102x22x11CM / 100m
Weight kg	32KG

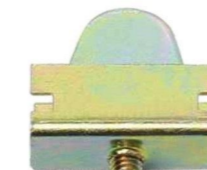
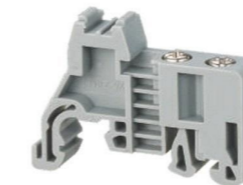
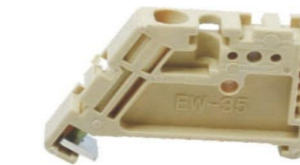
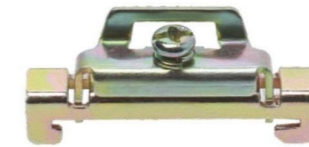
Product Dimension mm



Note: customization for bolt hole sizes and lengths offered.



Rail Accessories



CHAER® CHAER Rail

HDW-07 HDW-211 Rail Accessories

Model	HDW-07/HDW-211(1.5)
Carton size /quantity	26 x 23 x 22cm / 1000 pcs
Weight kg	30kg

HDW-201 Rail Accessories

Model	HDW-201(1.5)
Carton size /quantity	34 x 26.5 x 22cm / 2000 pcs
Weight kg	17kg

Plastic Fixing Part for C45 Breaker Rail Accessories

Model	Plastic Fixing Part for C45 Breaker
Color	Grey-white & Clay-bank
Carton size /quantity	42 x 42 x 22cm / 2000 pcs
Weight kg	12.5kg

UK Fixing Part Rail Accessories

Model	HDW-22
Color	Grey
Carton size /quantity	42 x 42 x 25cm / 2000 pcs
Weight kg	14kg

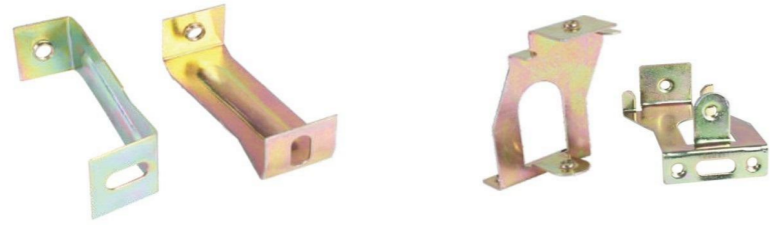
TBC Fixing Part / JF5 Fixing Part Rail Accessories

Model	TBC /HDW-277
Carton size /quantity	35 x 26 x 20cm / 2000 pcs
Weight kg	21kg

HDW-08 Support Rack for Mounting Rail

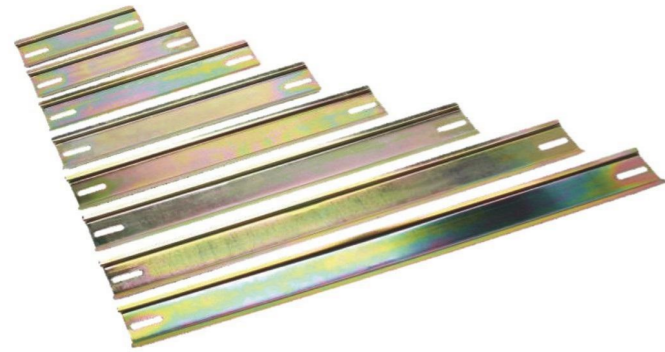
Model	HDW-08(2.0)
Carton size /quantity	40 x 35 x 28cm / 1000 pcs
Weight kg	44kg

Rail for Power Distribution Cabinet



Left & right Support DG-109 for PZ30 Distribution Cabinet

PZ30 Movable Support



Rail for PZ30 Distribution Cabinet & Merlin Gerin Distribution Cabinet

Electrical Mounting Rail

Model /specification	Left & right Support DG-109 for PZ30 Distribution Cabinet PZ30 Movable Support
----------------------	---

Rail for PZ30 Distribution Cabinet

Electrical Mounting Rail

Model/ specification	Length (cm)
2 circuits	7.8
4 circuits	12
6 circuits	15.5
8 circuits	19.5
10 circuits	23
12 circuits	26.5
15 circuits	32
18 circuits	38
20 circuits	41.5

Note: thickness of goods in stock is 0.5mm and 0.7mm.

Rail for Merlin Gerin Distribution Cabinet

Electrical Mounting Rail

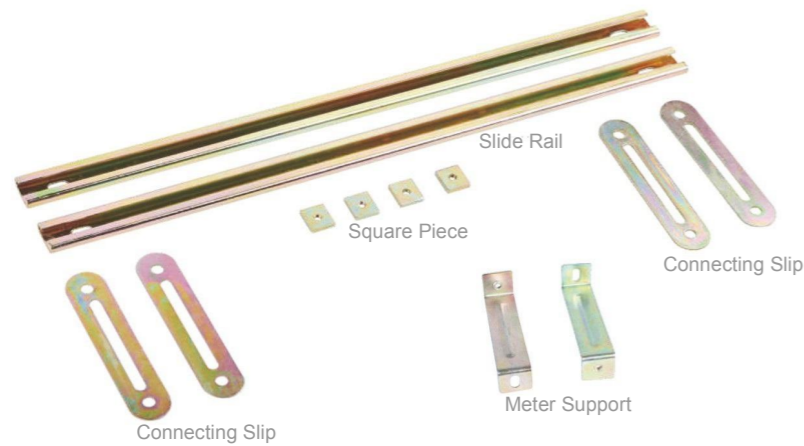
Model/ specification	Length (cm)
4 circuits	9.2
6 circuits	13
8 circuits	16.5
10 circuits	20.3
12 circuits	24
15 circuits	29.2
18 circuits	34.5
20 circuits	38.3

Note: thickness of goods in stock is 0.7mm.

For Meter Support

Electrical Mounting Rail

Model/ specification	Connecting Slip Slide Rail Square Piece Meter Support
----------------------	--



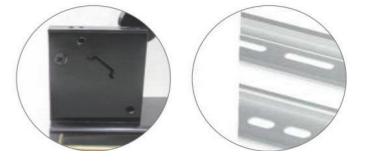
HRQ Rail Cutter



CHAER® CHAER Rail

HRQ-01 Rail Cutter

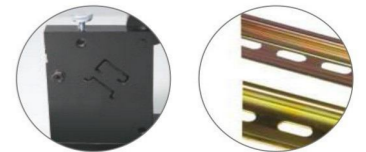
Model Name	HRQ-01 Single-cavity Rail Cutter
Material of rail	Aluminium /Steel
Length/width/height	600mmx70mm/110mm
Weight	5kg/set



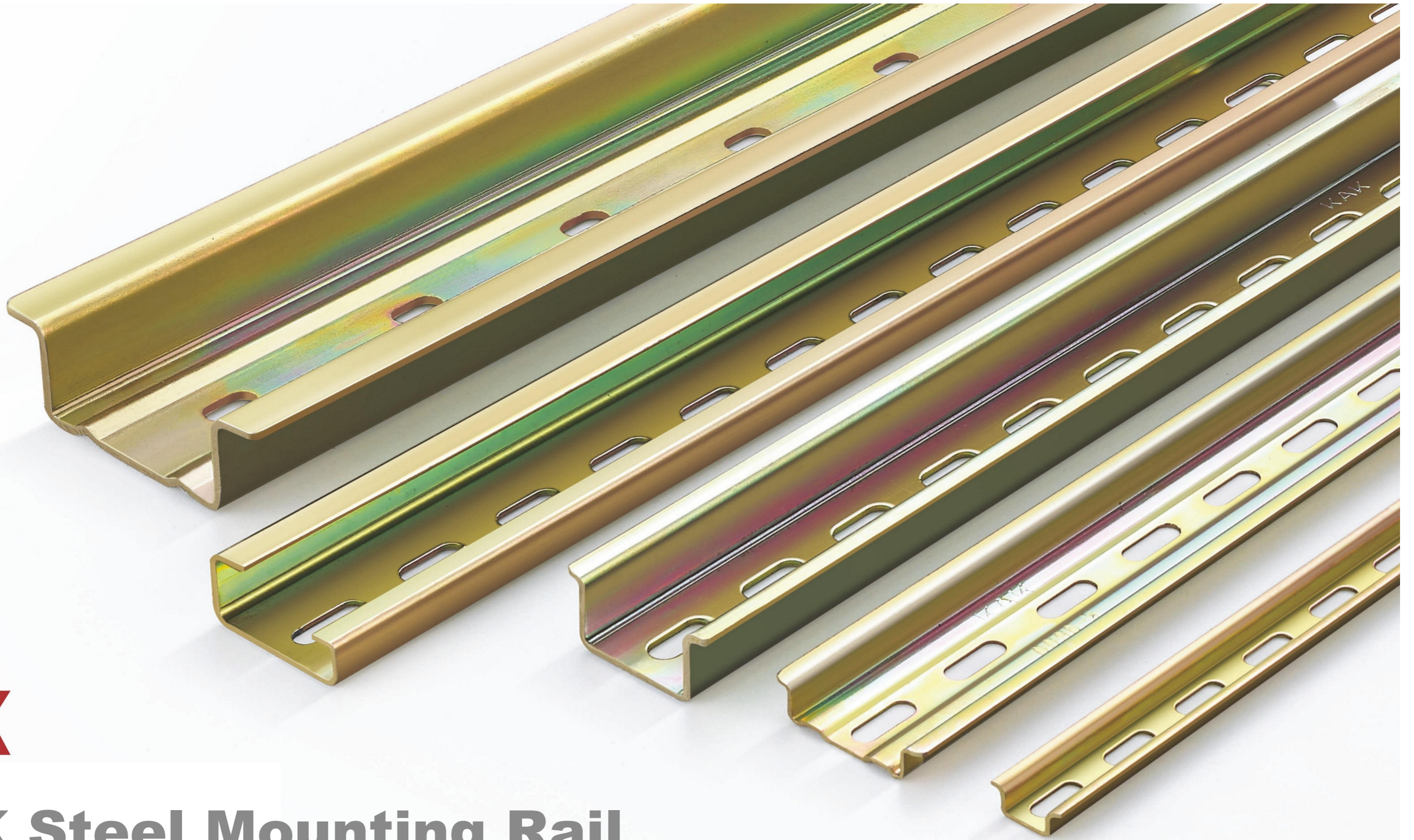
HRQ-02 Rail Cutter

Model Name	HRQ-02 Dual-cavity Rail Cutter
Material of rail	Aluminium /Steel
Length/width/height	600mmx70mm/110mm
Weight	5kg/set

Note: the dual-cavity rail cutter cuts C45 breaker mounting rail and JF5 rail.

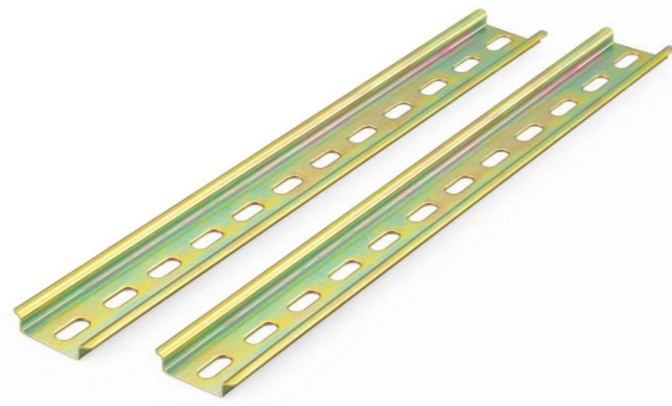


- CHAER rail cutter is a special-purpose tool featuring smooth cutting, burr free, efficient, and portable.
- Steel and aluminium rail cutters are not all-purpose. Cutting cavity may be selected according to the material of rail.



K
K Steel Mounting Rail

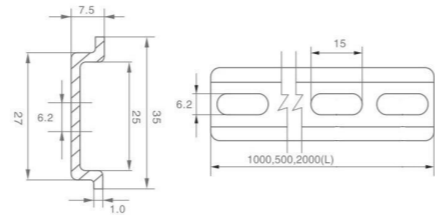
K Steel Mounting Rail



K-8500 Top Hat Section Rail

Model	TH35-7.5
Thickness	(1.0)
Bolt hole size	6.2 × 15
Standard length	1m / 2m
Carton size / quantity	102x22x6CM / 50m
Weight kg	16KG

Product Dimension mm



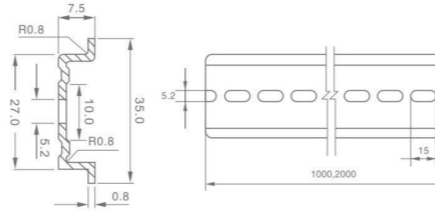
Note: customization for bolt hole sizes and lengths offered.



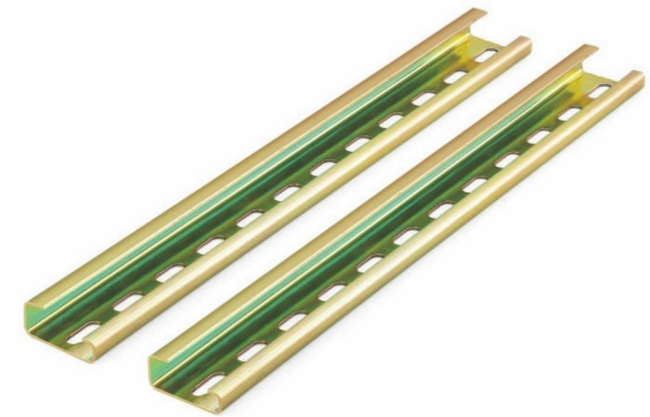
K-9600 Top Hat Section Rail (reinforced)

Model	TH35-7.5
Thickness	(0.8) (economical)
Bolt hole size	5.2 × 15
Standard length	1m / 2m
Carton size / quantity	102x22x10CM / 100m
Weight kg	27KG

Product Dimension mm



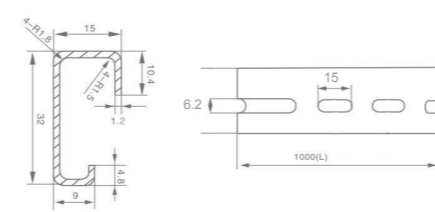
Note: customization for bolt hole sizes and lengths offered.



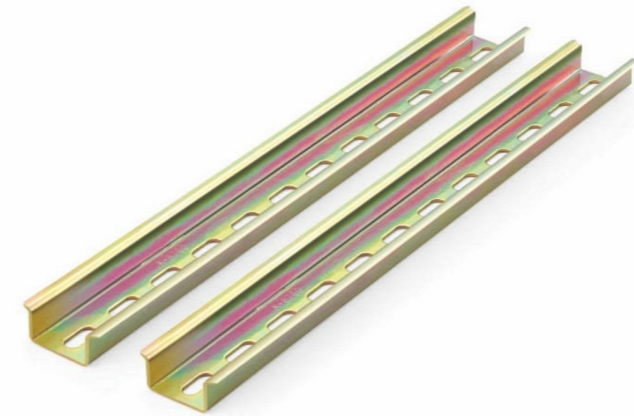
K-3600 G Section Rail

Model	TH32-15/9
Thickness	(1.2)
Bolt hole size	6.2 × 15
Standard length	1m / 2m
Carton size / quantity	102x20x9CM / 50 m
Weight kg	29KG

Product Dimension mm



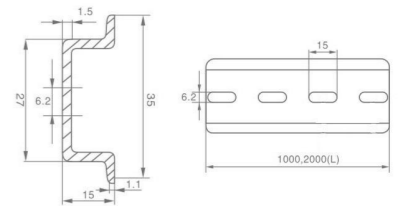
Note: customization for bolt hole sizes and lengths offered.



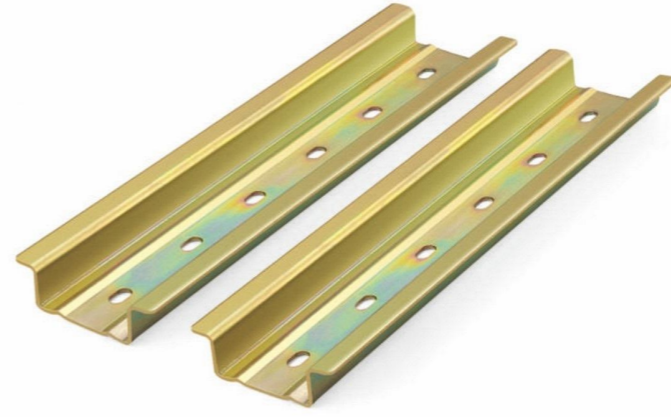
K-8700 Electrical Mounting Rail

Model	TH35-15
Thickness	(1.5)
Bolt hole size	6.2 × 15
Standard length	1m/2m
Carton size / quantity	102x22x10CM / 50m
Weight kg	32KG

Product Dimension mm



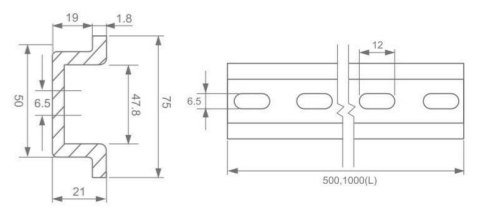
Note: customization for bolt hole sizes and lengths offered.



K-7500 Electrical Mounting Rail

Model	TH75-21
Thickness	(1.8)
Bolt hole size	6.5 × 12
Standard length	1m
Carton size / quantity	102x16x10CM / 20m
Weight kg	32KG

Product Dimension mm



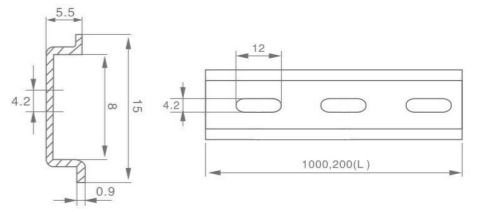
Note: customization for bolt hole sizes and lengths offered.



K-1500 Electrical Mounting Rail

Model	TH15-5.5
Thickness	(0.9)
Bolt hole size	4.2 × 12
Standard length	1m / 2m
Carton size / quantity	102x15x10CM / 100m
Weight kg	14KG

Product Dimension mm



Note: customization for bolt hole sizes and lengths offered.



K
K Aluminium Mounting Rail

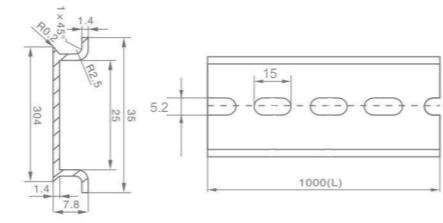
K Aluminium Mounting Rail



K-5600 Electrical Mounting Rail

Model	TH35-7.5
Thickness	(1.35)
Bolt hole size	5.2x15
Standard length	1m/2m
Carton size / quantity	102x22x10CM / 100m
Weight kg	16KG

Product Dimension mm



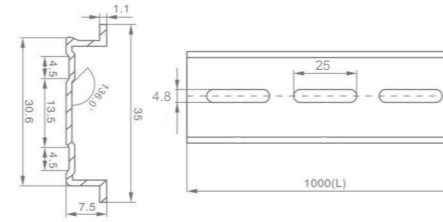
Note: customization for bolt hole sizes and lengths offered.



K-6800 Electrical Mounting Rail

Model	TH35-7.5
Thickness	(1.1)
Bolt hole size	4.8x25
Standard length	1m/2m
Carton size / quantity	102x22x10CM / 100m
Weight kg	13.2KG

Product Dimension mm

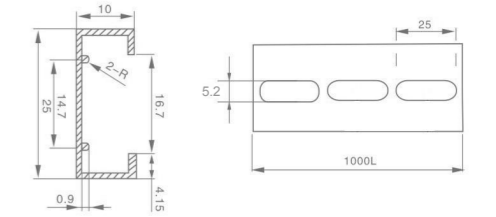


Note: customization for bolt hole sizes and lengths offered.

K-7600 Electrical Mounting Rail

Model	TH25-10
Thickness	(0.9)(1.1)
Bolt hole size	5.2x25
Standard length	1m
Carton size / quantity	102x22x10CM / 100m
Weight kg	9.4KG

Product Dimension mm



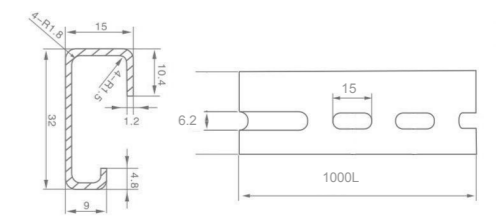
Note: customization for bolt hole sizes and lengths offered.



K-3500 Electrical Mounting Rail

Model	TH32-15/9
Thickness	(1.2)
Bolt hole size	6.2x15
Standard length	1m
Carton size /quantity	102x22x10CM / 50m
Weight kg	10KG

Product Dimension mm



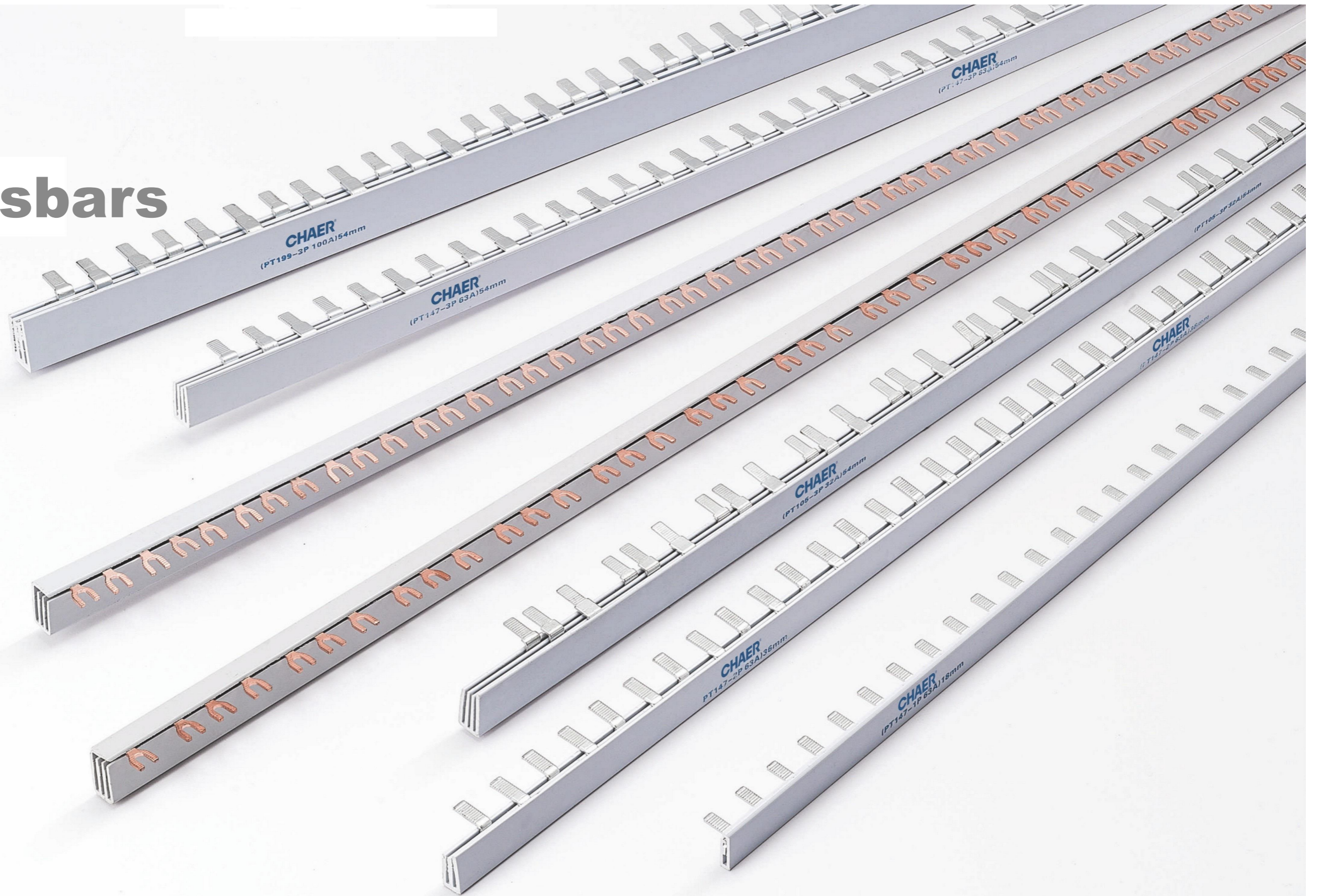
Note: customization for bolt hole sizes and lengths offered.





K

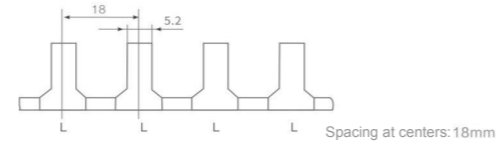
K Busbars





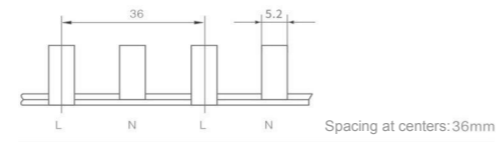
C45/1P Electrical Busbar

Model & specification	C45/1P 18mm
Material	Red copper
Thickness × width (current)	1.0x5(32A), 1.2x5(40A), 1.4x5(50A), 1.4x7(63A), 1.7x7(63A), 1.7x9(80A), 1.9x9(100A)
Standard length	1000(L) Customization for special lengths offered.
Product Dimension	mm



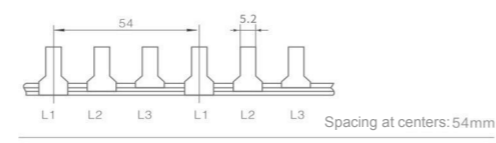
C45/2P Electrical Busbar

Model & specification	C45/2P 36mm
Material	Red copper
Thickness × width (current)	1.0x5(32A), 1.2x5(40A), 1.4x5(50A), 1.4x7(63A), 1.7x7(63A), 1.7x9(80A), 1.9x9(100A)
Standard length	1000(L) Customization for special lengths offered.
Product Dimension	mm



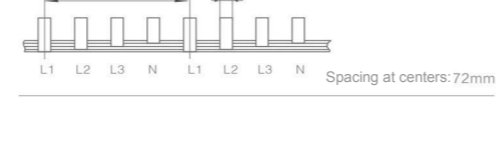
C45/3P Electrical Busbar

Model & specification	C45/3P 54mm
Material	Red copper
Thickness × width (current)	1.0x5(32A), 1.2x5(40A), 1.4x5(50A), 1.4x7(63A), 1.7x7(63A), 1.7x9(80A), 1.9x9(100A), 3.0x9(150A)
Standard length	1000(L) Customization for special lengths offered.
Product Dimension	mm



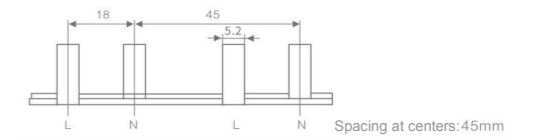
C45/4P Electrical Busbar

Model & specification	C45/4P 72mm
Material	Red copper
Thickness × width (current)	1.2x5(40A), 1.4x7(63A), 1.7x9(80A), 1.9x9(100A)
Standard length	1000(L) Customization for special lengths offered.
Product Dimension	mm



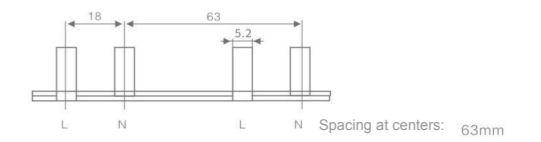
C45/1P with leakage protection Electrical Busbar

Model & specification	C45/1P+L 45mm
Material	Red copper
Thickness × width (current)	1.0x5(32A), 1.2x5(40A), 1.4x5(50A), 1.4x7(63A), 1.7x9(80A)
Standard length	1000(L) Customization for special lengths offered.
Product Dimension	mm



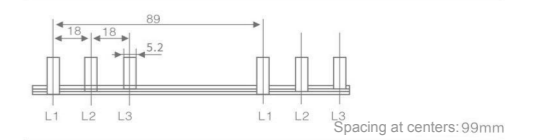
C45/2P with leakage protection Electrical Busbar

Model & specification	C45/2P+L 63mm
Material	Red copper
Thickness × width (current)	1.0x5(32A), 1.2x5(40A), 1.4x5(50A), 1.4x7(63A), 1.7x9(80A)
Standard length	1000(L) Customization for special lengths offered.
Product Dimension	mm



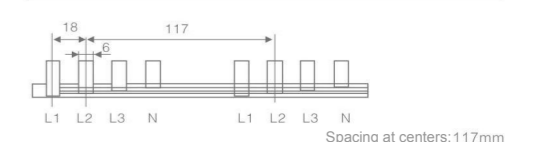
C45/3P with leakage protection Electrical Busbar

Model & specification	C45/3P+L 89mm
Material	Red copper
Thickness × width (current)	1.4x7(63A)
Standard length	1000(L) Customization for special lengths offered.
Product Dimension	mm



C45/4P with leakage protection Electrical Busbar

Model & specification	C45/4P+L 117mm
Material	Red copper
Thickness × width (current)	1.4x7(63A)
Standard length	1000(L) Customization for special lengths offered.
Product Dimension	mm

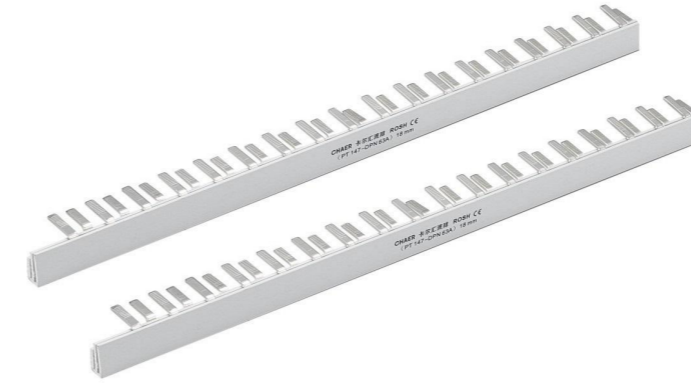


*Other leakage protection 4P busbars with spacing at 98mm, 125mm, 134mm and 142mm are available.



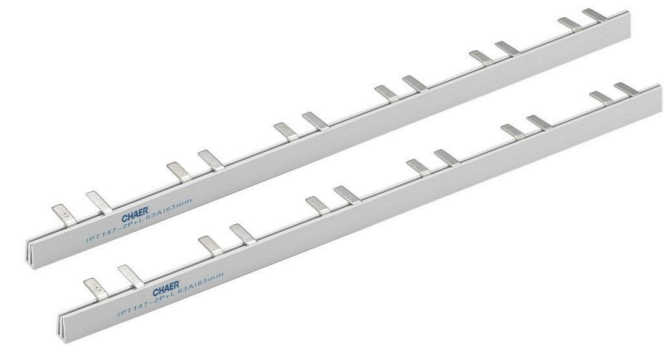
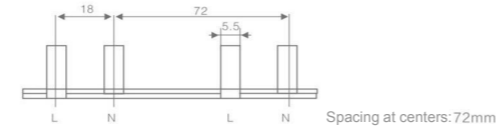
C65/1P with leakage protection Electrical Busbar

Model & specification	C65/1P+L 36mm
Material	Red copper
Thickness × width (current)	1.4x7 (63A)
Standard length	1000(L) Customization for special lengths offered.
Product Dimension	mm



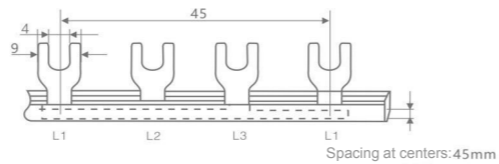
C65/2P with leakage protection Electrical Busbar

Model & specification	C65/2P+L
Material	Red copper
Thickness × width (current)	1.4x7 (63A)
Standard length	1000(L) Customization for special lengths offered.
Product Dimension	mm



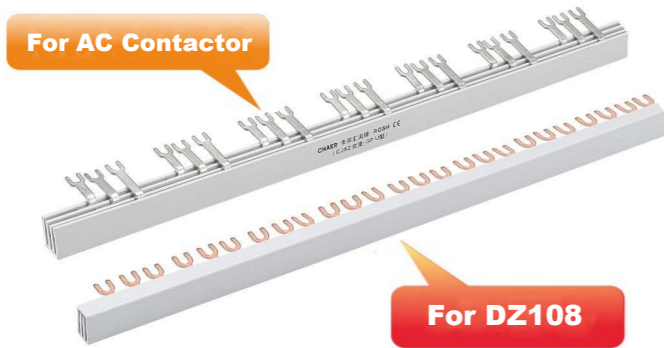
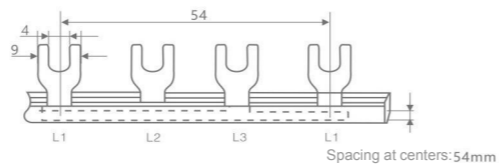
Special for Schneider GV2 Electrical Busbar

Model & specification	GV2-3P
Material	Red copper
Thickness × width (current)	1.4x7 (63A)
Standard length	1000(L)
Product Dimension	mm



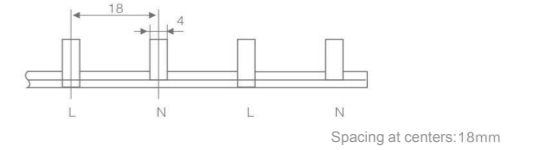
For AC Contactor & DZ108 Electrical Busbar

Model & specification	DZ108-3P
Material	Red copper
Thickness × width (current)	1.47x7 (63A)
Standard length	1000(L)
Product Dimension	mm



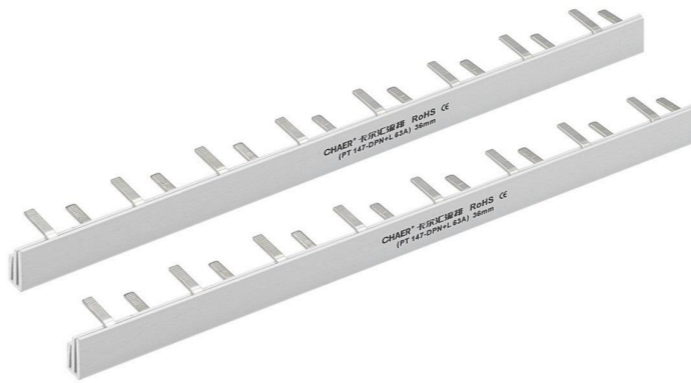
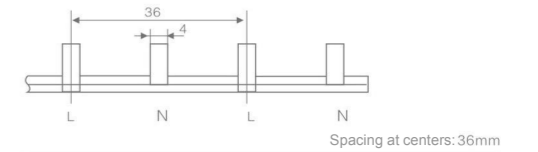
DPN Electrical Busbar

Model & specification	DPN
Material	Red copper
Thickness × width (current)	1.0x5(32A), 1.2x5(40A), 1.4x5(50A) 1.4x7(63A), 1.7x9(80A)
Standard length	1000(L) Customization for special lengths offered.
Product Dimension	mm



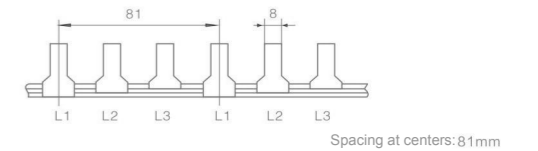
DPN with Leakage protection Electrical Busbar

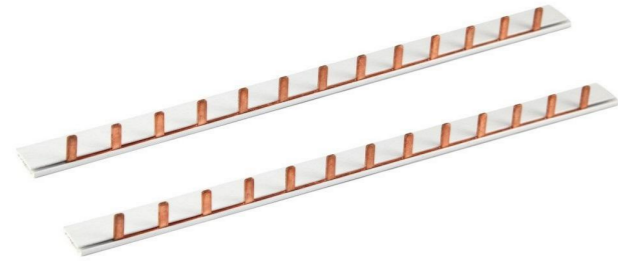
Model & specification	DPN+L
Material	Red copper
Thickness × width (current)	1.0x5(32A), 1.2x5(40A), 1.4x5(50A) 1.4x7(63A), 1.7x9(80A)
Standard length	1000(L) Customization for special lengths offered.
Product Dimension	mm



3P 100 Electrical Busbar

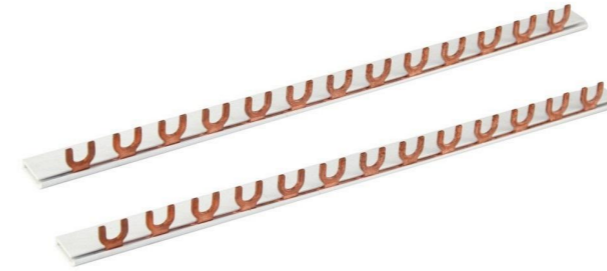
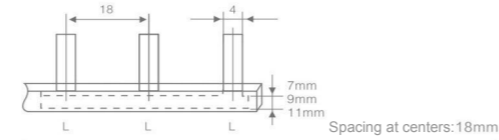
Model & specification	3P 100
Material	Red copper
Thickness × width (current)	1.4x7 (63A), 1.9x9 (100A)
Standard length	1000(L) Customization for special lengths offered.
Product Dimension	mm





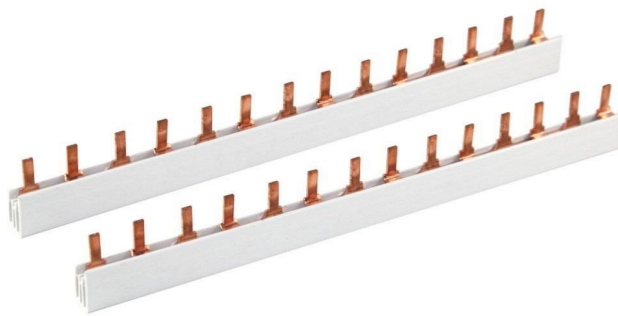
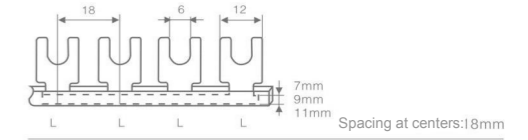
KR101 (Pin 1P) Electrical Busbar

Model	KR101-1	KR101-2	KR101-3
Thickness (mm)	1.5	1.5	1.9
Cross-sectional area (mm ²)	10	13	21
Current (A)	63	80	100
Width (mm)	7	9	11



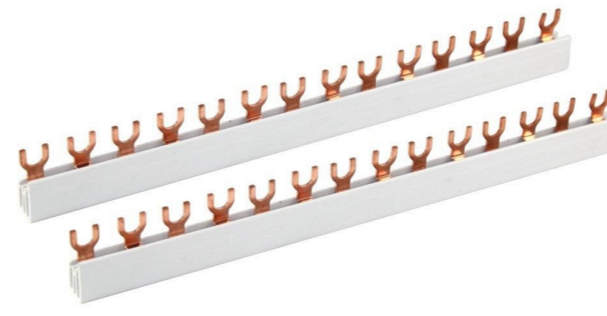
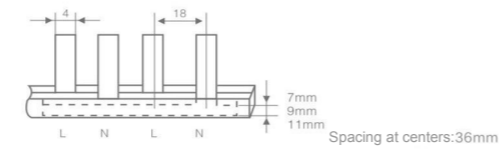
KR301 (U 1P) Electrical Busbar

Model	KR301-1	KR301-2	KR301-3
Thickness (mm)	1.5	1.5	1.9
Cross-sectional area (mm ²)	10	13	21
Current (A)	63	80	100
Width (mm)	7	9	11



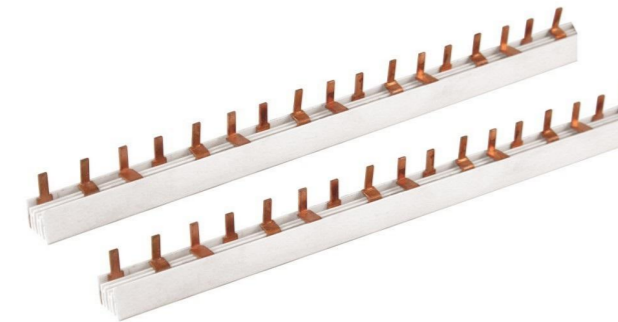
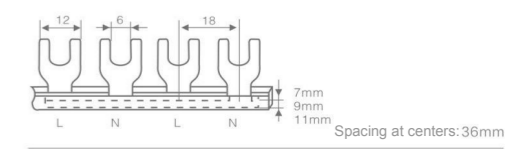
KR102 (Pin 2P) Electrical Busbar

Model	KR102-1	KR102-2	KR102-3
Thickness (mm)	1.5	1.5	1.9
Cross-sectional area (mm ²)	10	13	21
Current (A)	63	80	100
Width (mm)	7	9	11



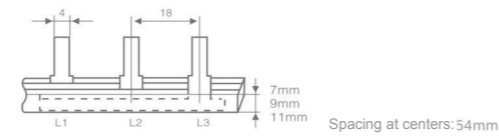
KR302 (U 2P) Electrical Busbar

Model	KR302-1	KR302-2	KR302-3
Thickness (mm)	1.5	1.5	1.9
Cross-sectional area (mm ²)	10	13	21
Current (A)	63	80	100
Width (mm)	7	9	11



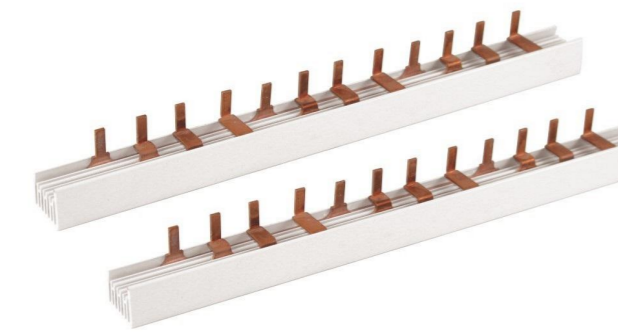
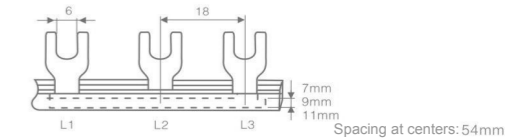
KR103 (Pin 3P) Electrical Busbar

Model	KR103-1	KR103-2	KR103-3
Thickness (mm)	1.5	1.5	1.9
Cross-sectional area (mm ²)	10	13	21
Current (A)	63	80	100
Width (mm)	7	9	11



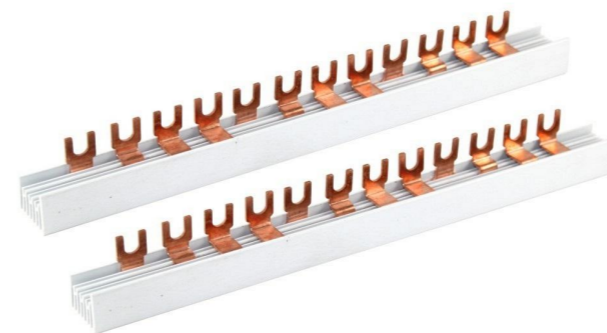
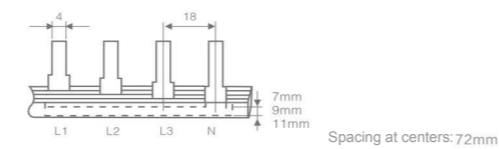
KR303 (U 3P) Electrical Busbar

Model	KR303-1	KR303-2	KR303-3
Thickness (mm)	1.5	1.5	1.9
Cross-sectional area (mm ²)	10	13	21
Current (A)	63	80	100
Width (mm)	7	9	11



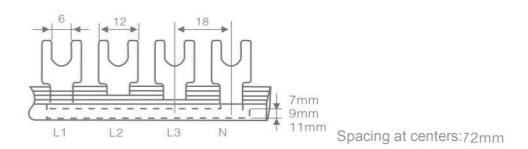
KR104 (Pin 4P) Electrical Busbar

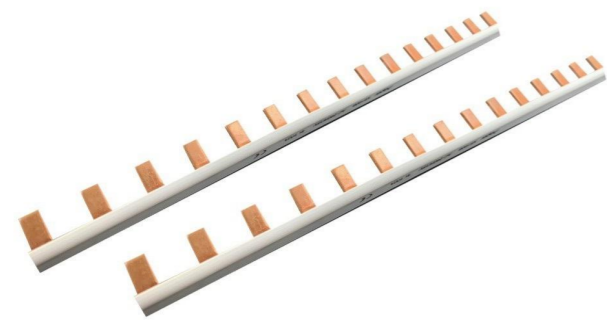
Model	KR104-1	KR104-2	KR104-3
Thickness (mm)	1.5	1.5	1.9
Cross-sectional area (mm ²)	10	13	21
Current (A)	63	80	100
Width (mm)	7	9	11



KR304 (U 4P) Electrical Busbar

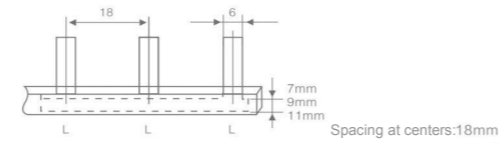
Model	KR304-1	KR304-2	KR304-3
Thickness (mm)	1.5	1.5	1.9
Cross-sectional area (mm ²)	10	13	21
Current (A)	63	80	100
Width (mm)	7	9	11



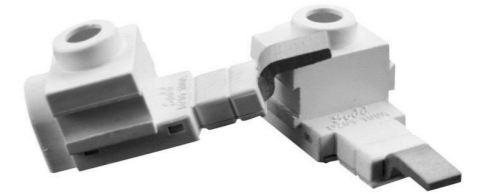


KR201 (C45 1P) Electrical Busbar

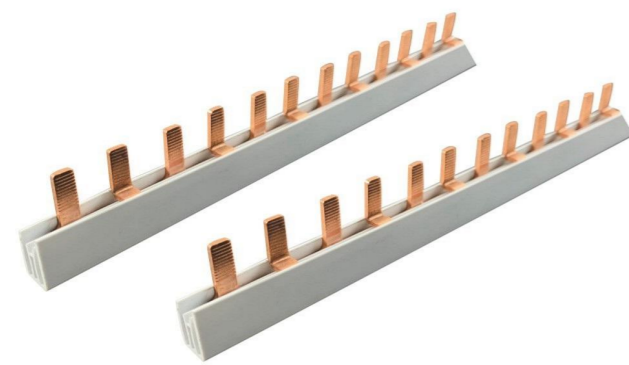
Model	KR201-1	KR201-2	KR201-3
Thickness (mm)	1.5	1.5	1.9
Cross-sectional area (mm ²)	10	13	21
Current (A)	63	80	100
Width (mm)	7	9	11



KR1-41JH for C45 Breaker

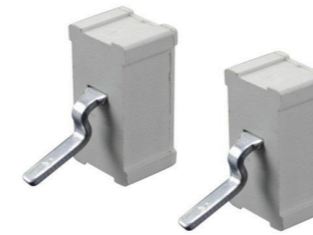
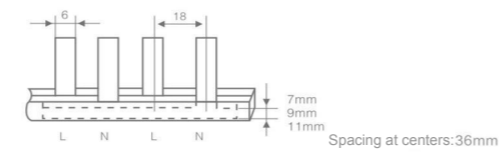


KC-01



KR202 (C45 2P) Electrical Busbar

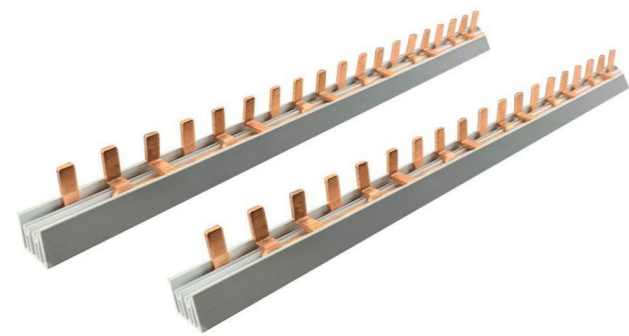
Model	KR202-1	KR202-2	KR202-3
Thickness (mm)	1.5	1.5	1.9
Cross-sectional area (mm ²)	10	13	21
Current (A)	63	80	100
Width (mm)	7	9	11



KR1-41JH for DPN Breaker

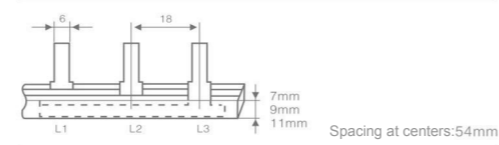


KC-02



KR203 (C45 3P) Electrical Busbar

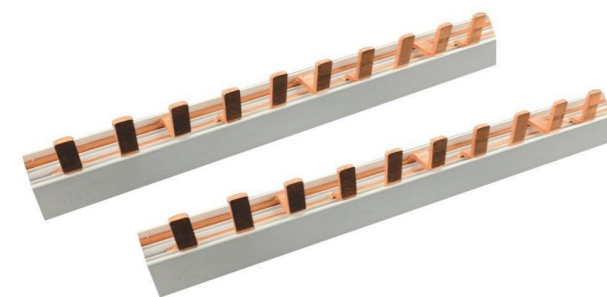
Model	KR203-1	KR203-2	KR203-3
Thickness (mm)	1.5	1.5	1.9
Cross-sectional area (mm ²)	10	13	21
Current (A)	63	80	100
Width (mm)	7	9	11



KC-03

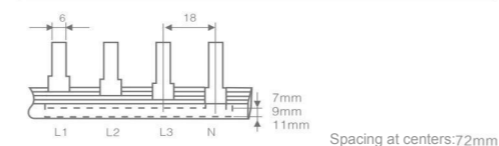


End caps for Busbar



KR204 (C45 4P) Electrical Busbar

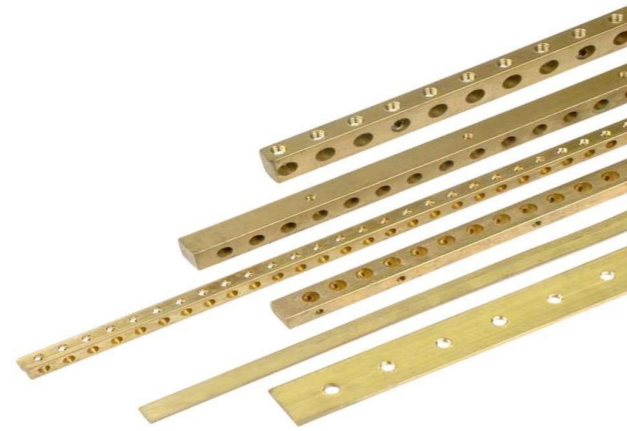
Model	KR204-1	KR204-2	KR204-3
Thickness (mm)	1.5	1.5	1.9
Cross-sectional area (mm ²)	10	13	21
Current (A)	63	80	100
Width (mm)	7	9	11





K Terminal Blocks





1-meter Brass Bar for Power Distribution Cabinet Brass bar

Model	Diameter	Thread
6x8	Ø4.5	M4
6x9	Ø5.2	M4
7x9	Ø5	M4
8x8	Ø5	M4
9x9	Ø5.2	M4
8x10	Ø5.5	M4
10x10	Ø5.5	M4
8x12	Ø6	M4
9x14	Ø8	M5
12x12	Ø10	M5
14x14	Ø6	M5
12x18 Single row		M6
12x18 Double-row		M5
2x10		M4
3x15		M5
3x20		M6
3x25		M8
3x30		M8

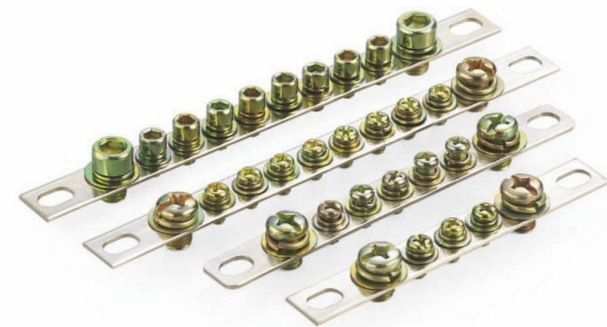
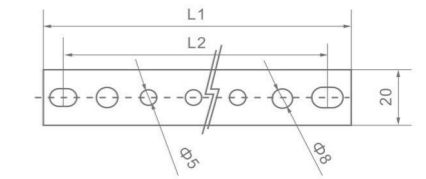
Note: customization as per clients' sample (drawings) offered.



LP1820 Terminal Block

Name	Neutral block (star socket cap screw) (hexagon socket cap screw)		
Model	LP1820-05	LP1820-07	LP1820-10
Contact point(s)	5	7	10
Specification	1.8x20	1.8x20	1.8x20
Total length (L1)	105mm	135mm	180mm
Mounting length (L2)	90mm	122mm	165mm

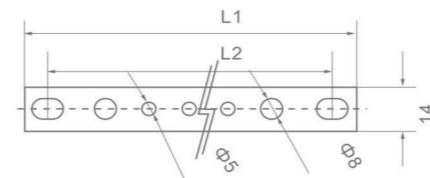
Product Dimension mm



LP1514 Terminal Block

Name	Neutral block (star socket cap screw) (hexagon socket cap screw)		
Model	LP1514-05	LP1514-07	LP1514-10
Contact point(s)	5	7	10
Specification	1.5x14	1.5x14	1.5x14
Total length (L1)	100mm	124mm	160mm
Mounting length (L2)	86mm	110mm	146mm

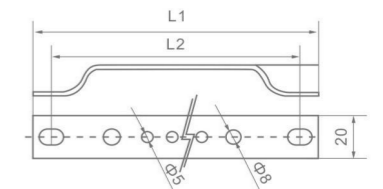
Product Dimension mm



DP1820 Terminal Block

Name	Earth block (star socket cap screw) (hexagon socket cap screw)		
Model	DP1820-05	DP1820-07	DP1820-10
Contact point(s)	5	7	10
Specification	1.8x20	1.8x20	1.8x20
Total length (L1)	122mm	152mm	197mm
Mounting length (L2)	107mm	137mm	182mm

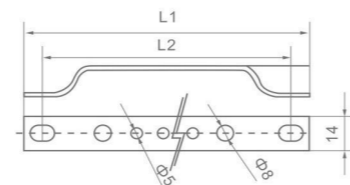
Product Dimension mm



DP1514 Terminal Block

Name	Earth block (star socket cap screw) (hexagon socket cap screw)		
Model	DP1614-05	DP1614-07	DP1614-10
Contact point(s)	5	7	10
Specification	1.5x14	1.5x14	1.5x14
Total length (L1)	113mm	135mm	168mm
Mounting length (L2)	99mm	70.5mm	103mm

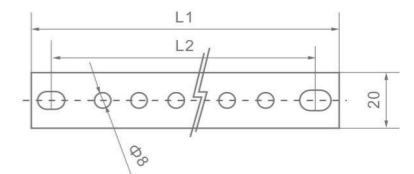
Product Dimension mm



LP2525 Terminal Block

Name	Neutral block (star socket cap screw) (hexagon socket cap screw)		
Model	LP2525-05	LP2525-07	LP2525-10
Contact point(s)	5	7	10
Specification	2.5x25	2.5x25	2.5x25
Total length (L1)	139mm	175mm	229mm
Mounting length (L2)	121mm	157mm	211mm

Product Dimension mm



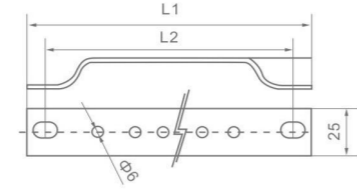
Terminal Blocks



DP2525 Terminal Block

Name	Earth block (star socket cap screw) (hexagon socket cap screw)		
Model	DP2525/S-15	DP2525-07	DP2525-10
Contact point(s)	5	7	10
Specification	2.5x25	2.5x25	2.5x25
Total length (L1)	140mm	176mm	230mm
Mounting length (L2)	122mm	158mm	212mm

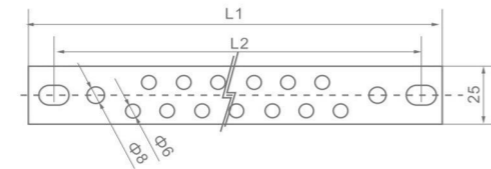
Product Dimension mm



LP2525/S Terminal Block

Name	Neutral block (star socket cap screw) (hexagon socket cap screw)				
Model	LP2525/S-15	LP2525/S-17	LP2525/S-19	LP2525/S-21	LP2525/S-23
Contact point(s)	15	17	19	21	23
Specification	2.5x25	2.5x25	2.5x25	2.5x25	2.5x25
Total length (L1)	139mm				
Mounting length (L2)	121mm				

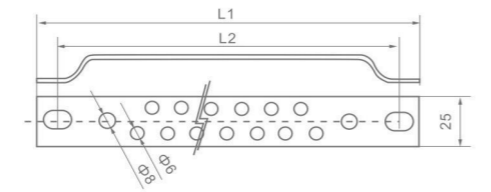
Product Dimension mm



DP2525/S Terminal Block

Name	Earth block (star socket cap screw) (hexagon socket cap screw)				
Model	DP2525/S-15	DP2525/S-17	DP2525/S-19	DP2525/S-21	DP2525/S-23
Contact point(s)	15	17	19	21	23
Specification	2.5x25	2.5x25	2.5x25	2.5x25	2.5x25
Total length (L1)	179mm	193mm	207mm	221mm	235mm
Mounting length (L2)	161mm	175mm	189mm	203mm	217mm

Product Dimension mm



0609H Terminal Block

Model	0609H-05	0609H-07	0609H-10
Contact point(s)	5	7	10
Specification	6x9mm		
Color	White (all-through)		



0609K Terminal Block

Model	0609K									
Contact point(s)	5+4	6+6	6+4+5	7+12	8+4+8	9+9	9+9+9	13+15	17+19	
Specification	6x9mm									
Color	White									



DZ01 Terminal Block

Model	DZ01
Contact point(s)	
Specification	7x11.8x13mm
Color	White