



**ELIM**  
ELIM TECHNOLOGY 以琳科技

**DISPOSABLE CURTAIN**  
100% recyclable polypropylene

CURTAIN LAST CHANGED  
D / M / Y

**International Standards**  
Flame Retardant to NFPA701 & BS5867-2:2008 Type C  
Antibacterial to AATCC 100-2012 & ISO 20743:2013

**DO NOT ENTER**

PLEASE ASK PERMISSION BEFORE ENTERING

[www.elimmedical.com](http://www.elimmedical.com) [info@elimsz.com](mailto:info@elimsz.com)  
[www.elimsz.com](http://www.elimsz.com) 0086-512-63635799  
No. 398, Tuncun East Road Suzhou, China, 215217





ELIM is a leading manufacturer of disposable curtains, with over 15 years of experience in the industry. Our ISO/SEDEX certified factory is committed to producing high-quality and innovative infection control solutions for healthcare facilities worldwide. As an ODM/OEM provider, we offer customized designs that comply with international regulatory standards.

Our disposable curtains are widely distributed to countries worldwide, helping healthcare institutions uphold their hygiene and safety protocols. We prioritize sustainability, minimize pollution, and plan on reducing our carbon footprint.

ELIM's commitment to excellence, innovation, and environmental sustainability makes us a reliable and trustworthy partner for clients seeking a reliable and practical infection control solution. We are dedicated to providing top-quality products and services to various medical institutions worldwide and offer bespoke solutions to cater to their unique needs and requirements.



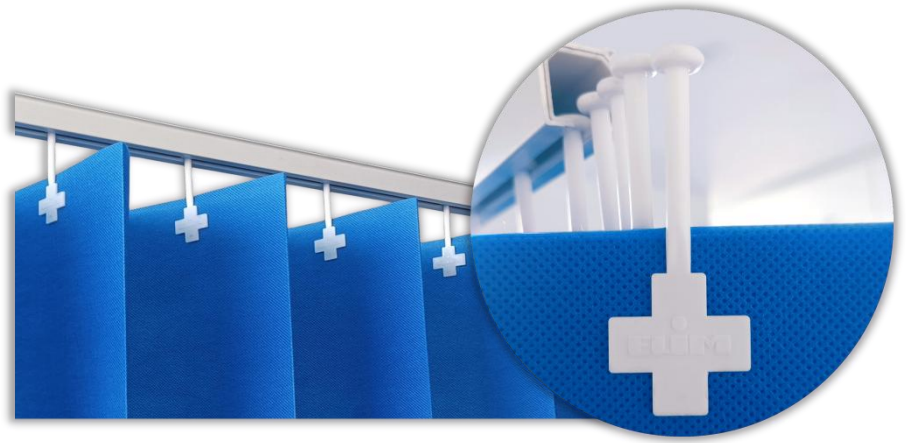


# ELIM CURTAINS

- Standard Disposable Curtain
- Mesh Disposable Curtain
- Disposable Shower Curtain
- Reusable Cubicle Curtain



# Standard Disposable Curtain



## Fire Retardant

ELIM disposable curtains are designed to meet international standards for fire retardancy.



**NFPA 701:2010**  
**BS 5867 Part 2 Type C**  
**AS/NZS 1530.3:1999**  
**EN 13772:2003**

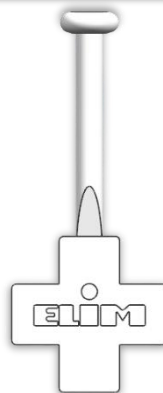
## Anti-Bacterial

Name of test bacterial	Antibacterial value A
Escherichia coli ATCC8739	>6.5
Candida albicans ATCC10231	>5.2
Staphylococcus Aureus ATCC6538	>5.7



**AATCC 100-2012**  
**ISO 20743:2021**  
**JIS L 1902:2008**

## Patent ELIM Hook



ELIM hook patented and unique. Welded glide hook installed in pre-pinned blocks to make curtain loading easy and very fast.

ELIM hooks are made of the same polypropylene material as the curtains. This ensures that the whole product is fully recyclable.

## Double-layer Fabric



Double-layer fabric of first page which can effectively prevent the disposable curtains from becoming warped, wrinkled, and worn, thereby increasing the durability and aesthetics of the curtain.



**U Shape**  
**7.5m × 2m**



**L Shape**  
**5.5m × 2m**



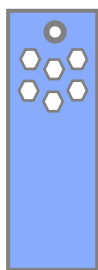
**Single Shape**  
**3.75m × 2m**



# Mesh Disposable Curtain

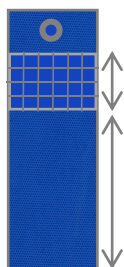


## Perforated Mesh Disposable Curtains



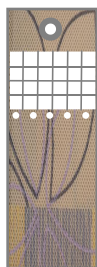
The length of the perforated mesh part is available in 0.5m and 0.6m options, and the standard height of the entire disposable curtain is 2.5m, with different sizes available for customization.

## Polyester Mesh Disposable Curtains



Polyester mesh disposable curtain consists of two parts: polyester mesh and polypropylene nonwoven panel, mesh and panel are stitched together. Various colors and prints are available for selection. We also provide custom services if you provided us the design.

## Snap-on Mesh Disposable Curtains



Snap-on mesh disposable curtains are designed to be easy to install and are available in a range of colors/patterns and sizes to suit different needs. When replacing, only the panel part needs to be replaced, and the cost is also saved.

## Zipper Mesh Disposable Curtains



Zipper connection curtain knows the importance of changing curtains frequently to save time and money, changing takes less than 60 seconds with no need for ladders or tools. The replaced panel with multiple color and pattern options.



## Disposable Shower Curtain

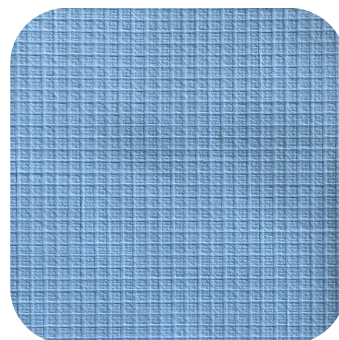


- **100% Polypropylene**
- **120gsm thickness**
- **Anti-bacterial**
- **Anti-mildew**
- **Water Resistant**
- **Fire Retardant**
- **100% Recyclable**

ELIM 100% polypropylene non-woven shower curtains are a smart solution for healthcare facilities seeking a disposable, hygienic, and cost-effective option. The curtains help prevent the spread of bacteria and viruses, ensuring optimal patient safety and infection control.



## Reusable Cubicle Curtain



- **100% polyester PVC laminated fabric**
- **Biosafe anti-bacterial accredited**
- **Durable and flexible**
- **Wipeable surface**
- **Flame retardant**

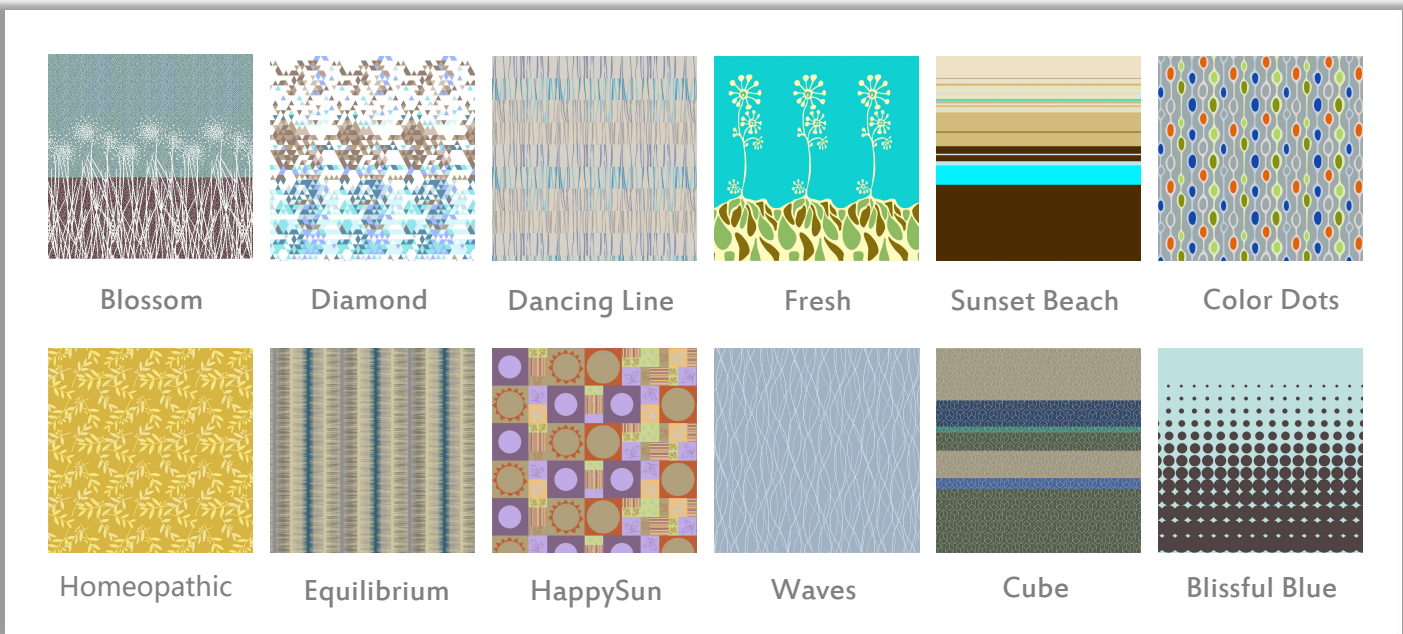
ELIM reusable PVC curtains that have anti-microbial properties and a wipe-clean surface that prevents the spread of infection in hospital wards. Flame retardant conforming to BS5867 Part 2 Type C for hospitals and healthcare environments. Available in standard sizes or made to measure.



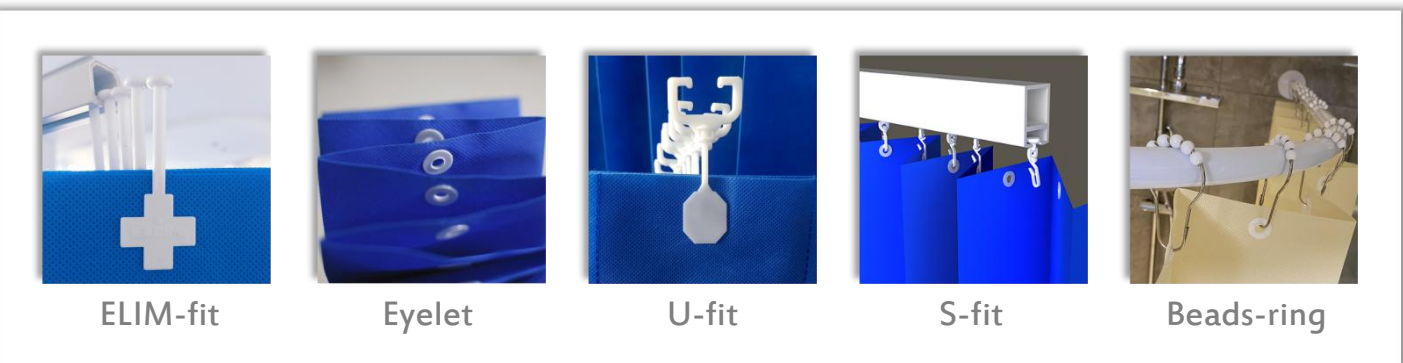
## Solid Colors



## Prints Patterns



## Hanging system



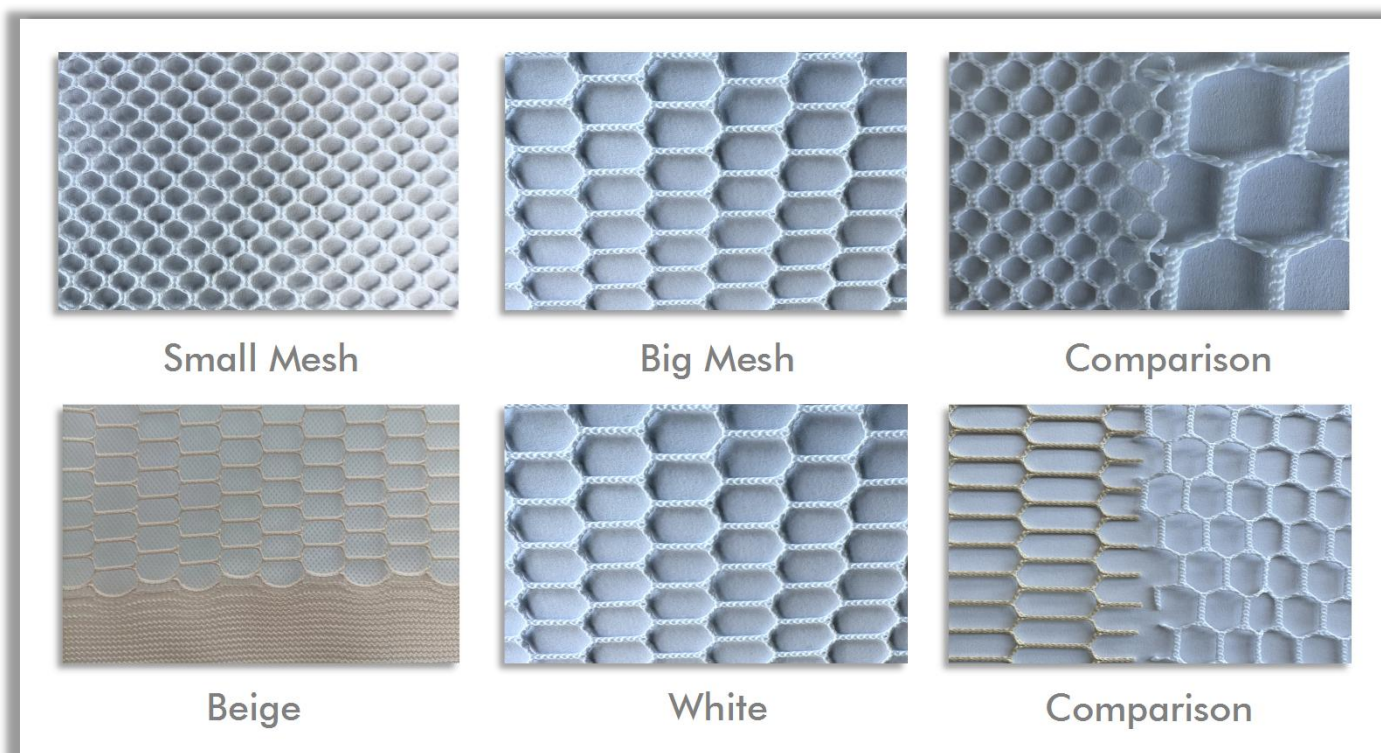


## Dimensions

	Standard	Mesh Curtain	Shower Curtain
Height	2.00m	2.50m	1.80m
U-track	7.50m	7.50m	2.50m
L-track	5.50m	5.50m	
Single-track	3.75m	3.75m	
Pleat width	0.15m	0.15m	0.15m/0.10m

Pleat width for bespoke requirements, we can produce disposable curtains to your exact width and height — just get in touch with your request.

## Mesh System



## ODM&OEM

“ If none of the above options meet your requirements, ELIM MEDICAL provides ODM & OEM services, which can customize colors according to Pantone color numbers, and customize patterns, labels, hooks, etc. according to the design drawings provided by customers, contact us please. ”





# CERTIFICATE OF REGISTRATION

Certificate No.: U23Q2SZ8006232R2S

The Quality Management Systems of

## ELIM MEDICAL TECHNOLOGY(SUZHOU) CO.,LTD

Unified Social Credit Code:9132050968530791XP

Registration address:No.398 Tuncun East Road, Tongli Town, Wujiang District, Suzhou City

Production address:Building 6, No.398 Tuncun East Road, Tongli Town, Wujiang District, Suzhou City

has been assessed by GICG and complying with

### GB/T19001-2016/ISO9001:2015

For the following activities

#### Production and Service of Curtains

Date of Issue:

Date of Expiry:

Date of Initial Certification:

26 July 2023

25 July 2026

28 July 2017



Scan for certificate status

The granting of this certificate does not mean that the certificate holder can avoid any legal obligation. If the products or activities covered in the scope of certification require administrative license, the certificate shall be only valid within the scope of administrative licensing. The registered organization shall be subject to regular annual supervision by GICG, and the continual validity of the certificate is base upon conformity of audit. Please scan two-dimension code at left to find the certificate information. This certificate can be queried at Certification and Accreditation Administration of the People's Republic of China official website ([www.cnca.gov.cn](http://www.cnca.gov.cn)) & GICG website ([www.gicg.com.cn](http://www.gicg.com.cn))



GICG WeChat public number

Signature:



Guardian Independent Certification Ltd

Registered in England

114 St Martin's Lane, Covent Garden, London WC2N 4BE

Accredited by Member of IAF MLA



0045

GICG - ENABLING TRUST IN A CHANGING WORLD





**ELIM Medical Technology Co Ltd**

**WS: [www.elimmedical.com](http://www.elimmedical.com)**

**TEL: +86 512 63635799**

**E-mail: [info@elimsz.com](mailto:info@elimsz.com)**

**WhatsApp: +86 13962159516**

**ADD: No.398 Tuncun East Road,  
Wujiang District, Suzhou,  
Jiangsu, China, 215217**

