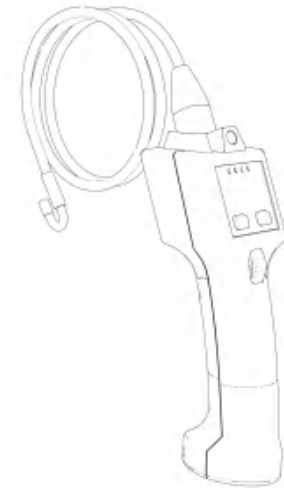


Industrial steering endoscope



User manual

EN

inskam805

Notice:

1. Please observe the precautions described below when operating the instrument. Failure to use the instrument as specified will not guarantee your safety.
2. Do not use or store in explosive, strong electricity, magnetic fields, or flammable gas, otherwise it may cause fire or explosion.
3. It is forbidden to work under the condition of being charged, so as to avoid electric shock
4. Do not repair, disassemble or modify the instrument without authorization.
5. Do not subject the product to severe impact or crushing, otherwise it may cause damage to internal core parts and affect product use.
6. When using the dial, first press the dial down and then move forward or backward. Otherwise, the dial will be difficult to rotate. If it is forcibly rotated, the dial lock may be damaged and affect the use.
7. The minimum bending radius of the coil is 10CM. Less than this radius will cause damage to the internal precision parts. When the coil is bent more, the steering mechanism will lose its corresponding function. Do not bend the coil excessively.
8. When the device is in use, it will light a green LED. When adjusting the LED, press and hold for 3 seconds to make the LED to the brightest state.

EN-1

Application:

1. Tubular / Water Pipe Cleaning: Check the pipe, it helps to clean, rust, corrode, dust and cracks
2. Shipbuilding industry: used to inspect boilers, steam turbines, diesel engines, pipelines
3. Industrial machinery: for checking engine scars or wear, gearboxes, hydraulic systems, greatly reducing downtime
4. Electronics, electronics industry: used to confirm the wiring status of the product, check the working status of the machine, etc.

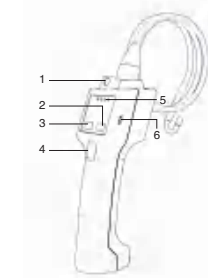


Features:

1. 3-in-1 data interface (TPY-C/USB/MICRO)
2. Real-time video viewing, video recording and picture capture
3. High brightness LED lamp, five adjustable brightnessPortable camera button for quick photo taking during easy use
4. 180 or 360 degree angle adjustable lockable, one-handed operation. Quick and convenient.

EN-2

Name and function of each part of the instrument:



- 1 Phone holder Interface
- 2 LED control keys
- 3 Snapshot button
- 4 Angle adjustment wheel
- 5 Signal indicator
- 6 Signal output

Instructions :

Phone mode

1. Download APP

Android :

1. Search in Google Play "inskam" or download and install the following link
(www.inskam.com/download/inskam1.apk).

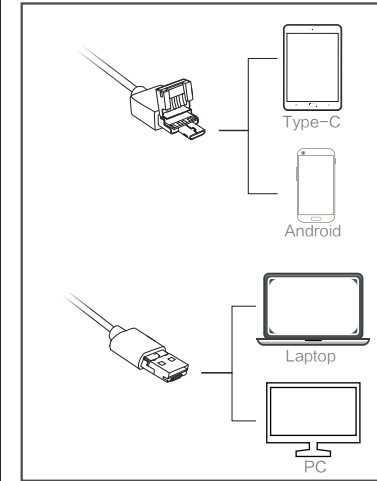
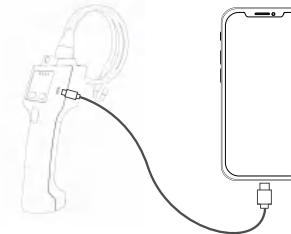


2. Using a mobile phone browser, scan the following QR code to download and install



EN-3

2. The signal port is plugged into the data line, and the mobile phone interface is connected.

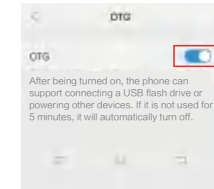


EN-4

3. Turn on the phone OTG function

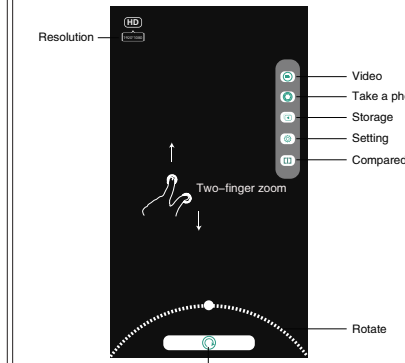


Setting



4. Open app

Open the app you can conduct video recording, take pictures, save files, settings, contrast, rotate, reset and other operations

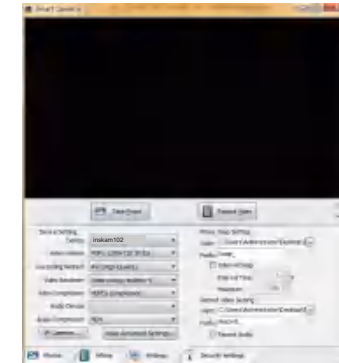


EN-5

PC mode

A, Windows systems

1. Download and install the software at the following link, www.inskam.com/download/camera.zip
2. Plug the USB cable into the computer's USB port, connect and turn on the device, and select PC Camera mode on the interface.
3. Open "Smart Camera", click on the device in Settings, then select "inskam102" to use.

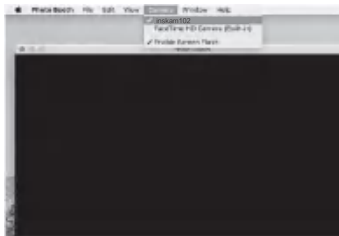


(Specific parameter settings can refer to the picture content)

EN-6

B, Mac system

1. In the "Applications" directory of the Finder window, find an app called Photo Booth.
2. Plug the USB cable into the computer's USB port, connect and turn on the device, and select PC Camera mode on the interface.
3. Click the Photo Booth and select "inskam102", you can use



EN-7

When using it :

1. Use the patch to attach the phone to the magnet holder above the main unit
2. Adjust LED brightness according to actual needs
3. Adjust the direction and angle of the snake bone bending by dialing the dial according to the actual situation.

After use :

1. Unplug the data cable
2. Turn the dial to return the front section
3. Put in the box

Accessories list:

1. One host
2. 3-in-1 USB cable (100CM, 20CM)
3. Set of mobile phone brackets
4. Rubber sleeve 2 knots
5. User's manual

EN-8

Technical Parameters:

The length of the	80 CM / customizable
The minimum bending	45MM
The maximum diameter	8MM
Bending angle	120 ° - 180 °
Pixels	100 W
Depth of field	20mm - 60mm
Operating temperature	0℃ - 65 ℃
Lens angle	70 degrees

Troubleshooting:

Fault phenomenon	Possible causes	Suggested solution
No image, no LED	The signal line is not plugged in	Re - plug the signal line
	OTG is not turned	Open OTG

EN-9

FCC information:

This device complies with Part 15 of the FCC Rules.

Subject to the following two conditions:

- (1) This device does not cause harmful interference.
- (2) This device must accept any interference received, including interference that may cause undesired operation. Changes or modifications not expressly approved by the party responsible for compliance could void the user's authority to operate the equipment.



*The numbers contained in the user manual are subject to any minor changes without prior notice.

CE FC RoHS

EN-10