

尺寸：70*100mm

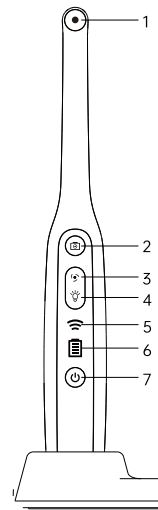
WiFi dental camera



Model: 401-B
Manual

Please read carefully and operate according to the instructions before use. Please keep this manual in a safe place for emergencies.

Features



1. Lens

8 LED lights, HD camera.

2. Take pictures / Videos

Short press to take pictures, long press for 3 seconds to record.

3. Zoom in and out

Short press "1.0-1.5-2.0-1.5-1.0" multiple cycle.

4. LED lights

Three-level brightness adjustment "100%-50%-0%" cycle.

Connect to the computer: press and hold for 3 seconds in the power-on state.

5. WiFi indicator

WiFi not connected: flashing; WiFi connected: always on; Connect to computer: light off.

6. Battery indicator

Low battery: red light flashes; Charging: red light is always on; Full charged: green light is always on.

7. Switch key

Press and hold for 3 seconds to switch on.

EN-1

APP download

Android users download:

Android system: Please search for "ANESOK" in the Google Market or scan the QR code to select Android to download and install.

IOS users download:

Search "ANESOK" on the Apple APP Store to install the APP.

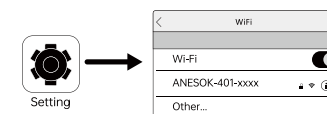


Mobile phone users

1. Press and hold the power button for 3 seconds to turn it on.

2. Click the settings icon on the main interface of the phone, and then click "WLAN / WiFi" of the phone.

3. The name of the WIFI is "ANESOK-401-xxxx", click it to connect.

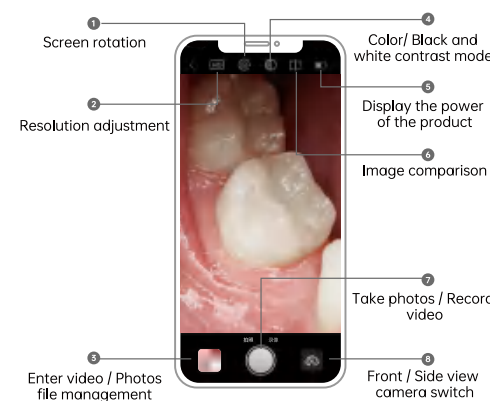


EN-2

4. After the connection is successful, click the "ANESOK" icon to view the visual screen.



APP introduction



EN-3

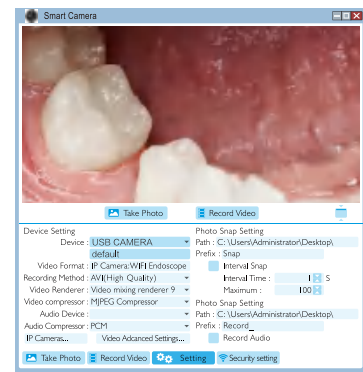
For computer users

Windows users:

1. Download and install the software "Smart Camera" from the following link:
www.inskam.com/download/camera.zip

2. Connect the device

Connect the dental camera to the computer through the Type-C interface, first press the power button to turn on, then press and hold the LED light adjustment button for 3 seconds, after the WiFi indicator is off, run the software "Smart Camera".



EN-4

MAC users:

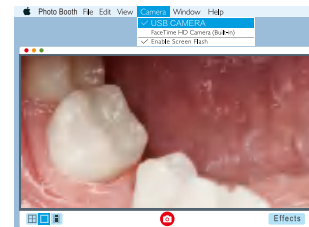
1. In the "Applications" directory of the Finder window, find an application called "Photo Booth".



2. Connect the device

A. Connect the dental camera to the computer through the Type-C interface, first press the power button to turn on, then press and hold the LED light adjustment button for 3 seconds, after the WiFi indicator turns off, run the software "Photo Booth".

B. Click "Photo Booth" and select "USB CAMERA", the connection is successful and you can use it.



EN-5

Charging Guide

The charging indicator light flashes red when the battery is low, please use 5v 500mA(or 1A) power adapter to charge the device, the red light is always on when charging, the green light is always on when fully charged, and the charging time takes about 2 hours.

Specifications

Network standard	IEEE 802.11 b/g/n
Antenna	Built-in IPEX antenna
Operating frequency	2.4GHz
Frame rate	25fps
Image sensor	CMOS
Lens LED light	8 adjustable LEDs
Operating temperature	32°F~113°F(0°C~45°C)
Battery type	1000mAh lithium battery
Battery life	2H
Power input	DC 5V 500mAh/1A
Waterproof level	IP67 (Lens only)
Resolution	1920*1080P
Sensor pixel	2 MP
Angle of view	70°

EN-6

Troubleshooting

Problems	Solutions
Camera is blurry/not clear	Use a cotton swab dipped in water or alcohol to wipe the lens
No response to turn on	Fully charged and reused
APP crashes	Clean the mobile phone running background, restart the APP
Camera light is off	Restart the device
Product flashes red	Fully charge the product before using it
After the product is successfully connected, the real-time image cannot be displayed normally	Disconnect the mobile phone from the product's WIFI, restart the device, reopen the APP, and reconnect the product's WIFI
WiFi connection is unstable and disconnects after a few seconds	Restart the device and reconnect the device to WIFI
*If the above operation fails to solve the problem, please contact customer service, we will further provide you with practical solutions	

