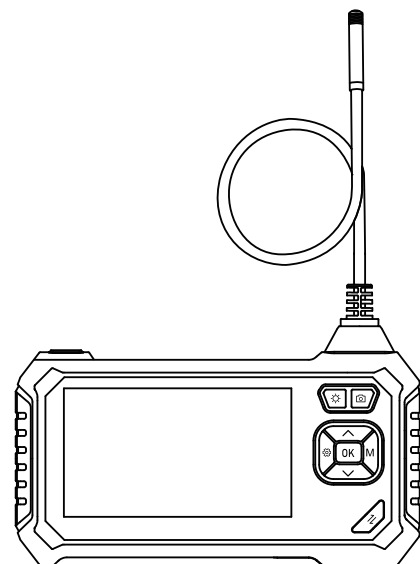


尺寸: 85*120mm

HD Industrial Endoscope



Model: 113

PRODUCT DESCRIPTION

113 is a high-precision industrial endoscope camera with 4.3 inch HD color display. It adopts ergonomic design, which makes it easy to operate. Self-storage, support for photo and video functions, also the TF card expansion function (up to 64G). This product is equipped with a small diameter HD camera with LED auxiliary lighting. The camera adopts a high-sensitivity chip, which can be used normally even in a dark working environment.

SAFETY AND MAINTENANCE

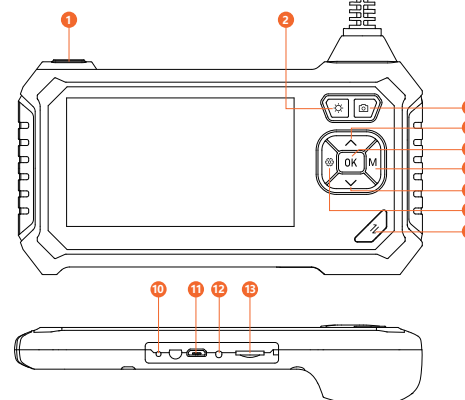
- The product is an industrial endoscopy camera and is not intended for medical use or human examination.
- Do not hit the camera violently and do not pull the cable.
- When used in an environment with sharp bumps, please use it carefully to prevent the waterproof protective layer of the probe from being scratched.
- The camera probe is not made of heat-resistant and high-temperature materials. When checking the automobile engine, please ensure that the temperature in the engine drops to the normal temperature.
- When not in use, please ensure that the lens and the main unit are clean and dry, and avoid contact with oil, etc. or other corrosive and dangerous substances.
- This product is not suitable for people with limited physical, sensory or mental abilities.
- Do not allow children to touch and operate this equipment.

BATTERY INSTRUCTIONS

- Please use a 5V household charger that meets the safety regulations to charge the equipment. Fast charging is not supported.
- This device supports charging while using.
- If the device is not used for a long time, please ensure that it is charged at least once every 3 months to prevent irreparable damage caused by excessive discharge of the battery.

- 2 -

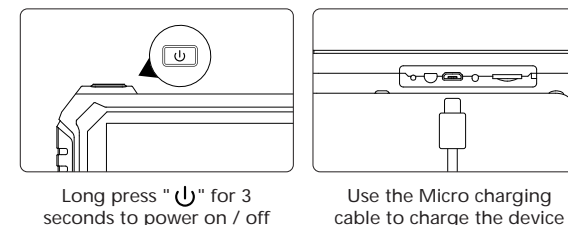
FUNCTION INTRODUCTION



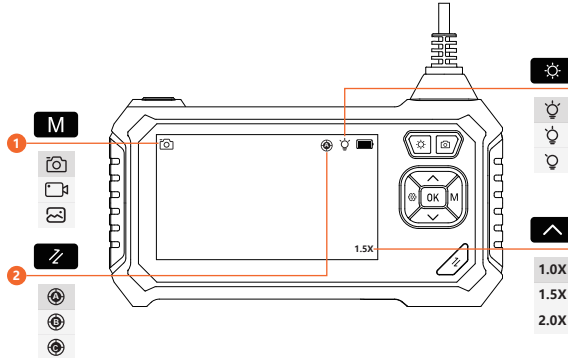
- 1 Power supply**
Press and hold for 3 seconds to turn on / off
- 2 Adjust the light**
Adjust the brightness of the camera LED
- 3 Taking photos**
Short press to take photos / Start recording / End recording
- 4 Up selection key**
Up/Zoom in / Video playback back key
- 5 Enter**
Confirm selection / Image fixed
- 6 Mode switching**
Switch between 3 function modes of take photo, video and photo album
- 7 Down selection key**
Scroll down / Picture rotation / Video playback fast forward key
- 8 Setting key**
Enter the setting interface / Return
- 9 Switch camera (Front/Side)**
If it is a single lens, the button is defined as left and right mirroring
- 10 Reset button**
When the product crashes, press it to restart the device
- 11 Charging interface**
Support Micro ordinary charging
- 12 Indicator light**
In charging, red led light on
Full charged, red led light off
- 13 TF card slot**
Support to expand 0-64G TF (Micro SD) card

- 3 -

Quick to use

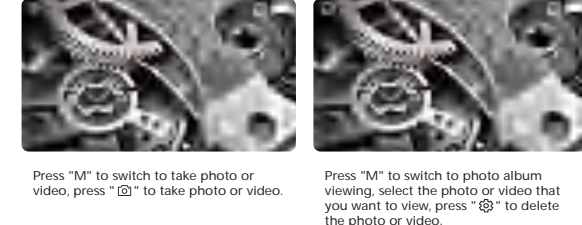


UI icon introduction

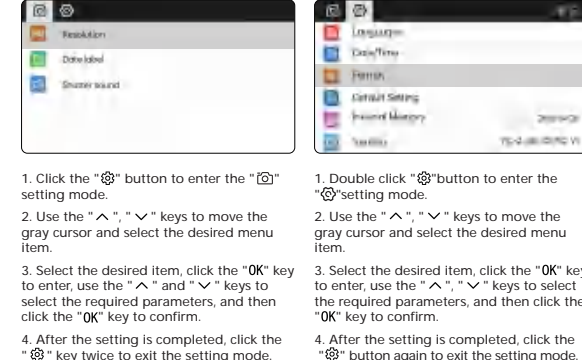


- 4 -

Enter the picture outputting interface



Settings



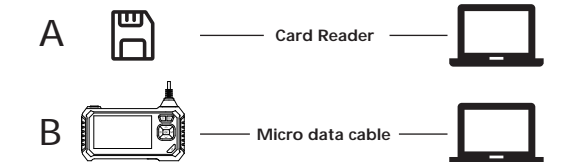
- 5 -

Language settings

- The system supports Simplified Chinese, Japanese, English, Korean, French, German, Italian, Spanish, Russian, Polish
- ①Press "M" button to enter the setting page
 - ②Select the language setting
 - ③Press the up and down button to select the desired language
 - ④Press "OK" to save

COPY PICTURE AND VIDEO FILES

Can use a TF card to copy directly, or use a Micro cable to connect to computer for copy



When operating the copy, if the machine is not connected to the computer, please restart the machine or plug and unplug the Micro data line. Do not plug and unplug the Micro data cable during the data transmission process, which will cause the data transmission to fail.

Charging Guide

1. Connect the device to the Micro USB adapter for charging (5V≈1A/5V≈2A). The product does not support fast charging.
2. During in charging, the red LED indicator light on for a long time
3. When the device is fully charged, the red LED will turn off.

- 6 -

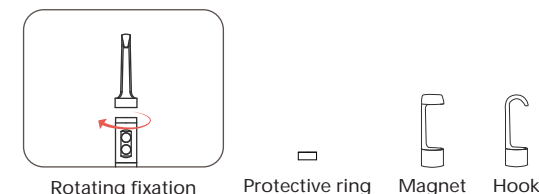
FAQ

- 1. Lags happened during the photo outputting of the product**
Please check whether the product has sufficient power, or restart the device.
- 2. Product crash**
Please press the reset button of the device, or restart the device.
- 3. Imaging screen is not clear**
The best imaging focal length of the product is: 2cm-10cm, please calibrate the distance to the object, or clean the front of the camera with a clean alcohol cloth.
- 4. Product charging**
Please use (5V≈1A/5V≈2A) charger to charge the device.The product does not support fast charging.
- 5. The camera is heat**
It is normal for the camera to heat up, especially when the camera LED light is on at the highest brightness. But it does not affect normal use or service life.
- 6. TF card can not be recognized**
Please confirm whether the TF format is FTA32. If not, please format it and do not recognize it. Please plug and unplug the TF card again.

- 7 -

Accessories installation Guide

Accessories: Protective ring*1, Magnet *1, Hook *1



Camera

		Dual lens		Single lens	
Camera diameter		8mm	5.5mm	8mm	5.5mm
Camera resolution		2 Megapixels			
Viewing angle		78°		70°	
Focusing range	A Camera	20-100mm		20-100mm	
	B Camera	20-50mm			

- 8 -

Specifications

Screen type: 4.3-inch color display
Photo resolution: 1920*1080
Screen resolution: 1280*720
Photo format: Jpg
Video format: AVI
Operating temperature: 32°F-113°F(0°C-45°C)
Camera temperature: 14°F-176°F(-10°C~80°C)
Charge port: Micro USB
Battery: 2600mAh
Battery life: 3 hours
Battery charging time: 2.5 hours
TF capacity: 0~64G

- 9 -

