



Ningbo Good Fastener Manufacturing Co., Ltd. is committed to producing **Half Thread Carriage Bolts**. There are also various non-standard screws such as double-head screws, double-tooth screws, pipe clamp screws, hanger bolts, etc. Ningbo Good Fastener Manufacturing Co., Ltd. has professional and advanced production equipment and technology. Eye hook wood screws have been exported to North America, Europe and the Middle East for a long time. **Half Thread Carriage Bolts** made of

carbon steel, and zinc plated.

### Product Introduction

Chinese Manufacturer Ningbo Good Fasteners focus on **Half Thread Carriage Bolts** for 16 years. The design of the Half Thread Carriage Bolts makes the use of a screwdriver or other drilling devices impossible. This is why carriage bolts **Half Thread Carriage Bolts** come with a square fitting or shank protruding from its flat side. In addition to fastening, the shank also helps grip the material, preventing it from twisting or turning, therefore making the installation or assembly simple and straightforward.

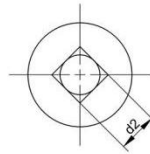
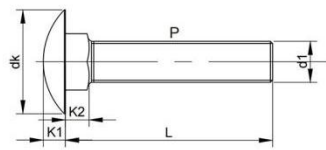
### Product Parameter (Specification)

<b>Type</b>	Carriage Bolt	<b>Part.No</b>	M6 M8 M10 M12
<b>Raw Material</b>	Carbon Steel	<b>Color</b>	Blue Zinc
<b>Salt Spray Test</b>	More Than 72 Hours	<b>Surface</b>	Zinc Plated
<b>Specification</b>	Half Thread Carriage Bolts	<b>Trademark</b>	Good Fasteners
<b>Application</b>	Construction installation, sanitaryware and hardware	<b>Origin</b>	Ningbo China
<b>Package</b>	Carton Box+wooden Case	<b>After-sales Service Provided</b>	Online support, Video technical support

### Product Feature And Application

The **Half Thread Carriage Bolts** is a threaded fastener that is typically employed in wood applications, although some specialized versions can also be utilized to fasten metal components. Also dubbed coach bolts or plow bolts, the fastener has a design similar to a standard bolt. The main difference between the regular version and carriage bolts consists of the domed head that is twice the diameter of regular bolt shafts.

## Product Details



Thread size	K1		K2		Φdk		Φd1		Φd2		P
	Min	Max	Min	Max	Min	Max	Min	Max	Min	Max	
M6	3.12	3.88	3.4	3.6	15.45	16.55	5.694	5.97	5.52	6.48	1
M8	4.12	4.88	4.4	5.6	19.35	20.65	7.637	7.97	7.42	8.58	1.25
M10	4.62	5.38	5.4	6.6	23.35	24.65	9.593	9.97	9.42	10.58	1.5
M12	6.05	6.95	7.25	8.75	29.35	30.65	11.541	11.97	11.3	12.7	1.75

**FAQ**

Do you provide sample? Free or charge?

Yes, we provide the sample for free, but you need to pay for the shipping

How about your delivery time?

if the goods in stock, we can delivery them with 2-5days; If the quantity is 1-2container, we can delinery them with 30-35days~

Can I have a visit to your factory before the order?

Yes, We are sincerely welcome you to visit our company and ready to help you. If you have any needs in China.

How many hours can your salt spray test reach?

"0~96 hours, no rust

96~120 hours, white rust

>120 hours, red rust"

Can you helps us source other related goods?

Yes, we can help you source other products if they are currently not in our product line.