



High quality **Double Thread Clamp Screws** is manufactured by Ningbo Good Fasteners. Ningbo Good Fasteners was established in 2006, specializing in the production of double-headed screws, double-threaded screws, clamping screws, hanger bolts and non-standard screws. **Double Thread Clamp Screws** is made of carbon steel and plated with blue or yellow zinc. It can pass the salt spray test for more than 72 hours, and the quality is reliable. Sincerely look forward to cooperating with you.

Product Introduction

Ningbo Good Fasteners **Double Thread Clamp Screw** manufactured in galvanized steel, yellow zinc, or blue zinc plated. Special size for its perfect fit in metal and nylon self-drilling wall plug. For attaching accessories to the self-drilling wall plug. **Double Thread Clamp Screw** is usually used with a pipe clamp.

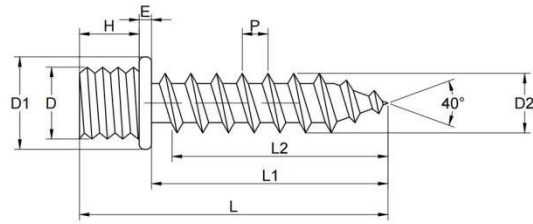
Product Parameter (Specification)

Type	Double Thread Screws	Part.No	M7 M8 M10
Raw Material	Carbon Steel	Color	Blue Zinc
Salt Spray Test	More Than 72 Hours	Surface	Zinc Plated
Specification	Double Thread Clamp Screws	Trademark	Good Fasteners
Application	Construction installation, sanitaryware and hardware	Origin	Ningbo China
Package	Carton Box+wooden Case	After-sales Service Provided	Online support, Video technical support

Product Feature And Application

Double Thread Clamp Screw are mainly used in Construction installation, sanitaryware and hardware. **Double Thread Clamp Screw** fixing of steel pipes, plastic and multilayer. It can pass the salt spray test for more than 72 hours, and the quality is reliable.

Product Details



TYPE	L		L1		L2		D		D1		D2		E		H		P
	Min	Max	Min	Max	Min	Max	Min	Max	Min	Max	Min	Max	Min	Max	Min	Max	
7-30	28	31.5	21.5	24.5	19.5	22.5	6.5	7	8.3	9	5.5	6	1	14	5.5	6.5	2.5
7-40	38	41.5	31.5	34.5	28.5	31.5	6.5	7	8.3	9	5.5	6	1	14	5.5	6.5	2.5
7-50	48	51.5	41.5	44.5	38.5	41.5	6.5	7	8.3	9	5.5	6	1	14	5.5	6.5	2.5
7-60	58	61.5	51.5	54.5	48.5	51.5	6.5	7	8.3	9	5.5	6	1	14	5.5	6.5	2.5
7-70	68	71.5	61.5	64.5	58.5	61.5	6.5	7	8.3	9	5.5	6	1	14	5.5	6.5	2.5
7-80	78	81.5	71.5	74.5	68.5	71.5	6.5	7	8.3	9	5.5	6	1	14	5.5	6.5	2.5
7-100	98	101.5	91.5	94.5	88.5	91.5	6.5	7	8.3	9	5.5	6	1	14	5.5	6.5	2.5
8-40	38	41.5	30.5	33.5	28.5	31.5	7.7	7.95	9.3	10	6.8	7	12	16	6.5	7.5	3
8-50	48	51.5	40.5	43.5	38.5	41.5	7.7	7.95	9.3	10	6.8	7	12	16	6.5	7.5	3
8-60	58	61.5	50.5	53.5	48.5	51.5	7.7	7.95	9.3	10	6.8	7	12	16	6.5	7.5	3
8-70	68	71.5	60.5	63.5	58.5	61.5	7.7	7.95	9.3	10	6.8	7	12	16	6.5	7.5	3
8-75	73	76.5	65.5	68.5	63.5	66.5	7.7	7.95	9.3	10	6.8	7	12	16	6.5	7.5	3
8-80	78	81.5	70.5	73.5	68.5	71.5	7.7	7.95	9.3	10	6.8	7	12	16	6.5	7.5	3
8-100	98	101.5	90.5	93.5	88.5	91.5	7.7	7.95	9.3	10	6.8	7	12	16	6.5	7.5	3
10-50	48	51.5	38.5	41.5	36.5	39.5	9.7	9.95	10	11	6.8	7	14	18	7.5	8.5	3
10-60	58	61.5	48.5	51.5	46.5	49.5	9.7	9.95	10	11	6.8	7	14	18	7.5	8.5	3
10-80	78	81.5	68.5	71.5	66.5	69.5	9.7	9.95	10	11	6.8	7	14	18	7.5	8.5	3
10-100	98	101.5	88.5	91.5	86.5	89.5	9.7	9.95	10	11	6.8	7	14	18	7.5	8.5	3

FAQ

Q1:Are you trade company or manufacturer ?

A1: Our company is an industry and trade integration business, located in Ningbo , Zhejiang.

Q2:Do you offer free samples?

A2: Yes, samples are free, but customers should pay for the shipping through the courier company

Q3:Where is the port of shipment?

A3:Ningbo.

Q4: How do you guarantee quality?

A4:On the one hand, our company have strong team and high precision machine to guarantee quality; one the other hand, We have a strict production process from producing to delivery.

Q5: What is your delivery time?

A5: Generally it needs 5-10 days if the goods are in stock, and 15-45 days if the goods are not in stock.

Q6: How about the label and the logo?

A6: Customize label and logo is workable.