



1,000L/H RO Water Treatment System

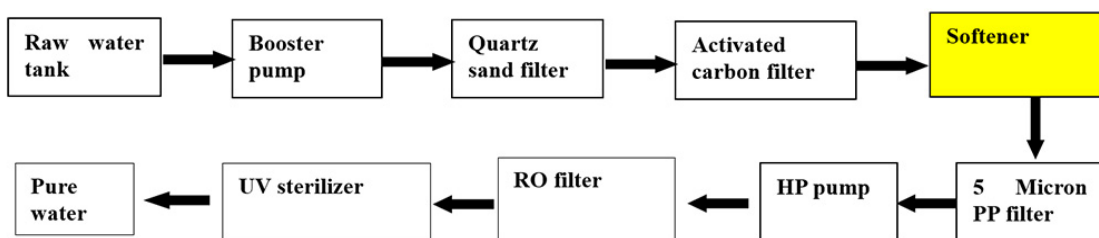


LND is a professional manufacturer of 1,000L/H RO water treatment system in China. We have been specialized in 1000L/H RO water treatment system solution for 12 years. We are providing most reliable quality machinery with reasonable and competitive price. We will be your long term cooperation partner in China.

1,000L/H RO Water Treatment System Design base:

- 1.1) Raw water: Well water (TDS=1000PPM).
- 1.2) Produced water's application: Drinking.
- 1.3) Capacity: 1000L/H.
- 1.4) Designed recovery: 50-65%.
- 1.5) Rejection rate: $\geq 97\%$.
- 1.6) Voltage: 3 phases, 380V, 50Hz; Power: 3.5KW.

1,000L/H RO Water Treatment System Filtration process:



1,000L/H RO Water Treatment System Component list

| No. | Equipment | Item | Specification | Qty | Unit (set) | Material | Remark |
|-----|--------------|------|---------------|-----|------------|----------|--------|
| 3.1 | Booster pump | pump | 0.75KW | 1 | | SUS304 | CNP |

Jiangmen Leonard Industrial Machineries Co., Ltd.

Tel: +86-750-3094316

E-mail: ben@lndwaterbottling.com



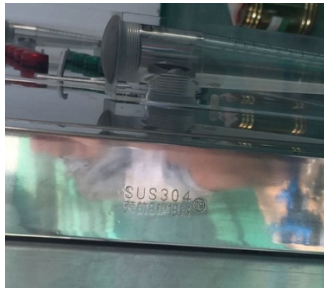
| | | | | | | | |
|-----|-------------------------------|---------------------------|------------------|---|-----|---------------|----------------------------|
| 3.2 | Mechanical filter | Tank (Manual valve) | Φ350×1600 | 1 | | SUS304 | Quartz sand: 150KG. |
| 3.3 | Activated carbon filter | Tank (Manual valve) | Φ350×1600 | 1 | | SUS304 | Coconut shell carbon:75KG. |
| 3.4 | Security filter | PP filter | 5filter,10inches | 5 | | PP | |
| | | Specification | Cartridge: SS304 | | | | |
| 3.5 | High pressure pump | High pressure pump | 2.2KW | 1 | | SUS304 | CNP |
| 3.6 | RO filter | RO membrane | BW30-4040 | 4 | | PA | DOW |
| | | Vessel | 4" -1M | 4 | | SUS304 | |
| | | Flux meter | | 2 | | Organic glass | |
| | | Pressure meter | 0.0 ~ 2.5PMa | 5 | | SS | |
| | | Pressure controlled meter | | 1 | | | |
| | | Solenoid | | 1 | | | |
| | | RO housing | | 1 | | | |
| 3.7 | Electrical controlling system | Conductivity meter | | 2 | | | Water quality sensor |
| | | Electrical box | PLC | 1 | | SS304 | |
| 3.8 | Pipelines | Low pressure pipelines | | 1 | Lot | U-PVC | |

1,000L/H RO Water Treatment System Picture

| | |
|---|------------------------------|
| 4.1)RO system:SUS304 Sand filter&carbon filter; | 4.2) DOW BW30-4040 membrane: |
|---|------------------------------|



4.3)Frame:SUS304(8Nickle):



4.4) Schneider AC contactor:



4.5)OMRON replay:



4.6)Prefilter:Sand filter+carbon filter+Softner:

4.7)RO filter(host):



