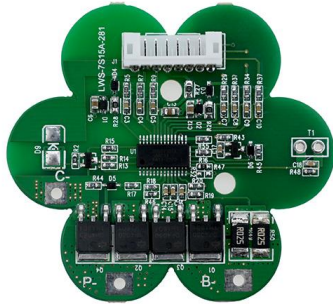


## 7S 8S 15A Lithium ion Battery Protection Board For Battery Pack BMS



LWS® is true 7S 8S 15A Lithium ion Battery Protection Board For Battery Pack BMS factory, supply OEM/ODM and custom service. Provide high quality with smart balance function, wholesale price, environment, ISO9001/ISO14001/CE/ROHS certificates. Brings the industry's high-end talents for R&D, engineering, and management, with strong design and development capabilities and quality assurance capabilities, perfect quality management system to provide high quality 7S 8S 15A Lithium ion Battery Protection Board For Battery Pack BMS.

### Product Introduction

LWS® battery protection board 7S 8S 15A Lithium ion Battery Protection Board For Battery Pack BMS always monitor the state of battery, when 4.25V or so to stop charging, the battery voltage is lower than 2.7 V or so to stop discharging, limit the output current, output short circuit to stop discharging, delay self-recovery, intelligent control of charging current, prevent damage to the battery, can greatly improve the service life of lithium battery.

### Product Parameter (Specification)

LWS® PCM Specifications For 29.4V (7S) Li-ion Battery Packs			
No.	Test item		Criterion
1	Voltage	Charging voltage	DC:29.4V CC/CV
		Single balanced voltage	
2	Current	Balance current for single cell	
		Current consumption	≤50 μA
		Maximal continuous charging current	5A
		Maximal continuous Discharging	15A

		current	
3	Over charge Protection (single cell)	Overcharge detection voltage	4.25±0.025V
		Over charge detection delay time	10mS—1200mS
		Over charge release voltage for single cell	4.15±0.025V
4	Over discharge protection (single cell)	Over discharge detection voltage for single cell	2.7±0.08V
		Over discharge detection delay time	10mS—500mS
		Over discharge release voltage for single cell	3.0±0.08V
5	Over current protection	Over current detection voltage	0.1V
		Charge Over current detection	80±5A
		Detection delay time	80ms—250ms
		Release condition	Automatic load recovery
6	Short protection	Detection condition	Exterior short circuit
		Detection delay time	200—500uS
		Release condition	Automatic load recovery
7	Resistance	Protection circuitry (MOSFET)	≤20mΩ
8	Temperature	Operating Temperature Range	-20~+60℃
		Storage Temperature Range	-20~+85℃

## Product Feature and Application

Our 7S 8S 15A Lithium ion Battery Protection Board For Battery Pack BMS PCM designed for 25.9V Li-Ion/Li-Po battery pack.  
 Prevents cell from over-charging and over-discharging.  
 Continuous working current at 15A.  
 Balancing feature available.

## Product Details

7S 8S 15A Lithium ion Battery Protection Board For Battery Pack BMS  
 This board is not designed for high powered tools such as portable drills and alike, it' s for control battery charge and discharge and reduce standby current consumption, controls battery charge and discharge and reduces standby current

consumption.

## Notes

- 1) Wire connection strictly according to the drawing, do not intentionally short circuit.
- 2) Before charged, need to connect the cables first.
- 3) When the group of battery is connected in series, ensure that the voltage of each group of batteries voltage is the same. If not, fill each group of batteries separately before connecting them in series. In discharge tests, the group of cells with the fastest voltage drop is the differential cell.