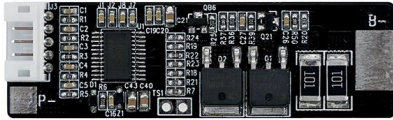


## 3S 4S 5S 10A 21V Lithium ion Battery With Temperature Switch BMS



LWS® battery protection board 3S 4S 5S 10A 21V Lithium ion Battery With Temperature Switch BMS has a complete process of customization, design, testing, mass production. You are welcomed to come to LWS to buy the latest selling, low price, and high-quality 3S 4S 5S 10A 21V Lithium ion Battery With Temperature Switch BMS. We look forward to cooperating with you.

### Product Introduction

LWS® battery protection board 3S 4S 5S 10A 21V Lithium ion Battery With Temperature Switch BMS has a complete process of customization, design, testing, mass production. You are welcomed to come to LWS to buy the latest selling, low price, and high-quality 3S 4S 5S 10A 21V Lithium ion Battery With Temperature Switch BMS. We look forward to cooperating with you.

### Product Parameter (Specification)

Shenzhen Li-ion Battery Bodyguard Technology Co.,LTD			
PCM Specifications For LWS® 18.5V (5S) Li-ion Battery Packs			
No.	Test item		Criterion
1	Voltage	Charging voltage	DC:21V 4.2/Cell
		Single balanced voltage	
2	Current	Balance current for single cell	
		Current consumption	≤30 μA
		Maximal continuous charging current	10A
		Maximal continuous Discharging current	10A
3	Over charge Protection (single cell)	Overcharge detection voltage	4.25±0.025V
		Over charge detection delay time	0.5S—1.5S
		Over charge release voltage for single cell	4.05±0.05V

4	Over discharge protection (single cell)	Over discharge detection voltage for single cell	$2.50 \pm 0.062V$
		Over discharge detection delay time	10mS—150mS
		Over discharge release voltage for single cell	$3.00 \pm 0.062V$
5	Over current protection	Over current detection voltage	$0.1 \pm 0.015V$
		Charge Over current detection	$30 \pm 5A$
		Detection delay time	5ms—20ms
		Release condition	Cut load
6	Charge over current protection	Overcurrent detects voltage	$16 \pm 2A$
7	Short protection	Detection condition	Exterior short circuit
		Detection delay time	200—500us
		Release condition	Cut load
8	Resistance	Protection circuitry (MOSFET)	$\leq 30m\Omega$
9	Temperature	Operating Temperature Range	$-20 \sim +60^{\circ}C$
		Storage Temperature Range	$-20 \sim +65^{\circ}C$

## Product Feature and Application

Our battery protection board 3S 4S 5S 10A 21V Lithium ion Battery With Temperature Switch BMS can widely use in mobile phones, cameras, laptops and other digital electronic products, power tool battery pack, electric bicycles, electric scooters, electric motorcycle, electric vehicle EV, etc

## Product Details

3S 4S 5S 10A 21V Lithium ion Battery With Temperature Switch BMS Detect and protect the battery from over-charge, over-discharge, over-current short-circuit, temperature detecting protection and automatically voltage balance function.

Build with high end electronic components (High End IC and MOSFET), simple structure design will let it have more stable quality working performance, Flexible application

(it can be used for less series battery by leaving some connection pins at empty status), full set of protection measures let it works well without any influence from external unexpected accidents.

## Notes

- 1) Wire connection strictly according to the drawing, do not intentionally short circuit.1) Wire connection strictly according to the drawing, do not intentionally short circuit.
- 2) Before charged, need to connect the cables first
- 3) When ten groups of batteries are connected in series, ensure that the voltage of each group of batteries voltage is the same. If not, fill each group of batteries separately before connecting them in series. In discharge tests, the group of cells with the fastest voltage drop is the differential cell.