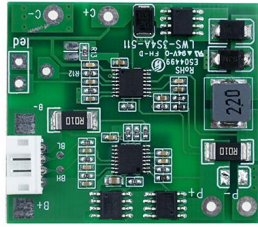


10S 15A 37V Lithium ion Battery Protection Board For E-bike Battery BMS



LWS® is a high-tech 10S 15A 37V Lithium ion Battery Protection Board For E-bike Battery BMS enterprise integrating the research and development, production, sales, and client service from Shenzhen China, we have over 10years manufacturing experiences in this industry. Developing and producing over 1000 types of modules, and our 10S 15A 37V Lithium ion Battery Protection Board For E-bike Battery BMS are all passed CE, RoHs. We bring together the industry's high-end talents for R&D, engineering, and management, with strong design and development capabilities and quality assurance capabilities, perfect quality management system to ensure that each protection board with the standard of "perfect order, under control, fundamentally stable"

Product Introduction

LWS® battery protection board always monitor the state of battery, when 4.25V or so to stop charging, the battery voltage is lower than 2.7 V or so to stop discharging, limit the output current, output short circuit to stop discharging, delay self-recovery, intelligent control of charging current, prevent damage to the battery, can greatly improve the service life of lithium battery. You are welcomed to come to LWS to buy the latest selling, low price, and high-quality 10S 15A 37V Lithium ion Battery Protection Board For E-bike Battery BMS. We look forward to cooperating with you.

Product Parameter (Specification)

Shenzhen Li-ion Battery Bodyguard Technology Co.,LTD			
PCM Specifications For LWS® 7.4V (2S) Li-ion Battery Packs			
No.	Test item		Criterion
1	Voltage	Charging voltage	DC:8.4V CC/CV
2	Current	Trickle charging voltage (less than this voltage on)	≤7.85V/100mA
		Current consumption	Max:50 μ A
		Maximal continuous charging current	1A
		Maximal continuous Discharging current	3A

3	Over charge Protection	Over charge detection voltage for single cell	$4.25V \pm 0.025V$
		Over charge detection delay time	0.5—1.5S
		Over charge release voltage for single cell	$4.1 \pm 0.05V$
4	Over discharge protection	Over discharge detection voltage for single cell	$2.7V \pm 0.05V$
		Over discharge detection delay time	50mS—150mS
		Over discharge release voltage for single cell	$3.0 \pm 0.1V$
5	Over current protection	Over current detection voltage	$200 \pm 15mv$
		Over current detection current	$15 \pm 1A$
		Detection delay time	5—15mS
		Release condition	Cut load
6	Short protection	Detection condition	Exterior short circuit
		Detection delay time	200—500uS
		Release condition	Cut load
7	Resistance	Protection circuitry (MOSFET)	$\leq 100m\Omega$
8	Charging indicator port	Charging red on Charging current less than 75mA blinking red and green on	Full charge port in charge
9	Temperature	Operating Temperature Range	$-20 \sim +60^{\circ}C$
		Storage Temperature Range	$-20 \sim +60^{\circ}C$

Product Feature and Application

Our 10S 15A lithium-ion battery protection board is suitable for the following products:

E-bike battery pack, 10S battery pack, LED light backup power, 37V electronic products, Solar street light battery pack, Digital Equipment battery pack, and other products.

Product Details

10S 37V 15A lithium-ion battery protection board

This BMS protects 10 lithium batteries connected in series from overcharging, over-discharging, overcurrent, and short-circuit.

37V battery pack rated voltage, 42.5V battery pack full charge voltage, 36V battery

pack rated voltage.

This board is not designed for high powered tools such as portable drills and alike.

Notes

- 1) Wire connection strictly according to the drawing, do not intentionally short circuit.
- 2) Before charged, need to connect the cables first.
- 3) When the group of battery is connected in series, ensure that the voltage of each group of batteries voltage is the same. If not, fill each group of batteries separately before connecting them in series. In discharge tests, the group of cells with the fastest voltage drop is the differential cell.