

## Test Report

No. C180809007001

Date: Aug 14, 2018

Page 1 of 4

SHENZHEN Peak Fasten Technologies CO., LTD.

3rd FL, Xinghe Mansion, Zhongxin Road, Shajing STREET, Bao'an DISTRICT, SHENZHEN CITY

The following samples were submitted and identified on behalf of the clients as

Sample Name: 1215/SUM23/1215MS

CPST Internal Reference No.: C180809007

Sample Received Date: Aug 09, 2018

Test Period: Aug 09, 2018 to Aug 14, 2018

Test Method: Please refer to next page(s).

Test Result: Please refer to next page(s).

\*\*\*\*\*  
**CONCLUSION :**

<u>TESTED SAMPLES</u>	<u>TEST ITEM</u>	<u>RESULT</u>
1215/SUM23/1215MS	1. RoHS Directive 2011/65/EU Annex II amending Annex (EU)2017/2102—Lead, Cadmium, Mercury, Hexavalent Chromium(Cr <sup>6+</sup> ) content	<b>PASS</b>

\*\*\*\*\*  
  
Signed for and on behalf of  
**Eurones Consumer Products Testing Service Co., Ltd**

TESTED BY :

REVIEWED BY:

APPROVED BY:

*Andy Wang*

*Sunshine Liu*

*Will Pan*

Wang Guang Yu, Andy  
Project Leader

Liu Xiao Fang, Sunshine  
Report Reviewer

Pan Jian Ding, Will  
Technical Supervisor

This Test Report is issued by the Company subject to its General Conditions of Service printed overleaf or available on request and accessible at [www.cpstlab.com](http://www.cpstlab.com). Attention is drawn to the limitations of liability, indemnification and jurisdictional issues defined therein. Unless otherwise stated the results shown in the test report refer only to the sample(s) tested. This test report cannot be reproduced, except in full, without prior written permission of the Company. Any unauthorized alteration, forgery or falsification of the content or appearance of this report is unlawful and offenders may be prosecuted to the fullest extent of the law.

### Photo of the Submitted Sample



This Test Report is issued by the Company subject to its General Conditions of Service printed overleaf or available on request and accessible at [www.cpstlab.com](http://www.cpstlab.com). Attention is drawn to the limitations of liability, indemnification and jurisdictional issues defined therein. Unless otherwise stated the results shown in the test report refer only to the sample(s) tested. This test report cannot be reproduced, except in full, without prior written permission of the Company. Any unauthorized alteration, forgery or falsification of the content or appearance of this report is unlawful and offenders may be prosecuted to the fullest extent of the law.

### Test Result(s):

Description of Specimen : Silvery metal

### 1. RoHS Directive 2011/65/EU Annex II amending Annex (EU)2017/2102—Lead, Cadmium, Mercury, Hexavalent Chromium(Cr<sup>6+</sup>) content

Test Items	Unit	Test Method	Result	MDL	Limit
Lead (Pb)	mg/kg	IEC 62321-5:2013, ICP-OES	N.D.	2	1000
Mercury (Hg)	mg/kg	IEC 62321-4:2013+A1:2017, ICP-OES	N.D.	2	1000
Cadmium(Cd)	mg/kg	IEC 62321-5:2013, ICP-OES	N.D.	2	100
Hexavalent Chromium (Cr <sup>6+</sup> )	µg/cm <sup>2</sup>	IEC 62321-7-1:2015, UV-VIS	N.D.	0.10	0.10

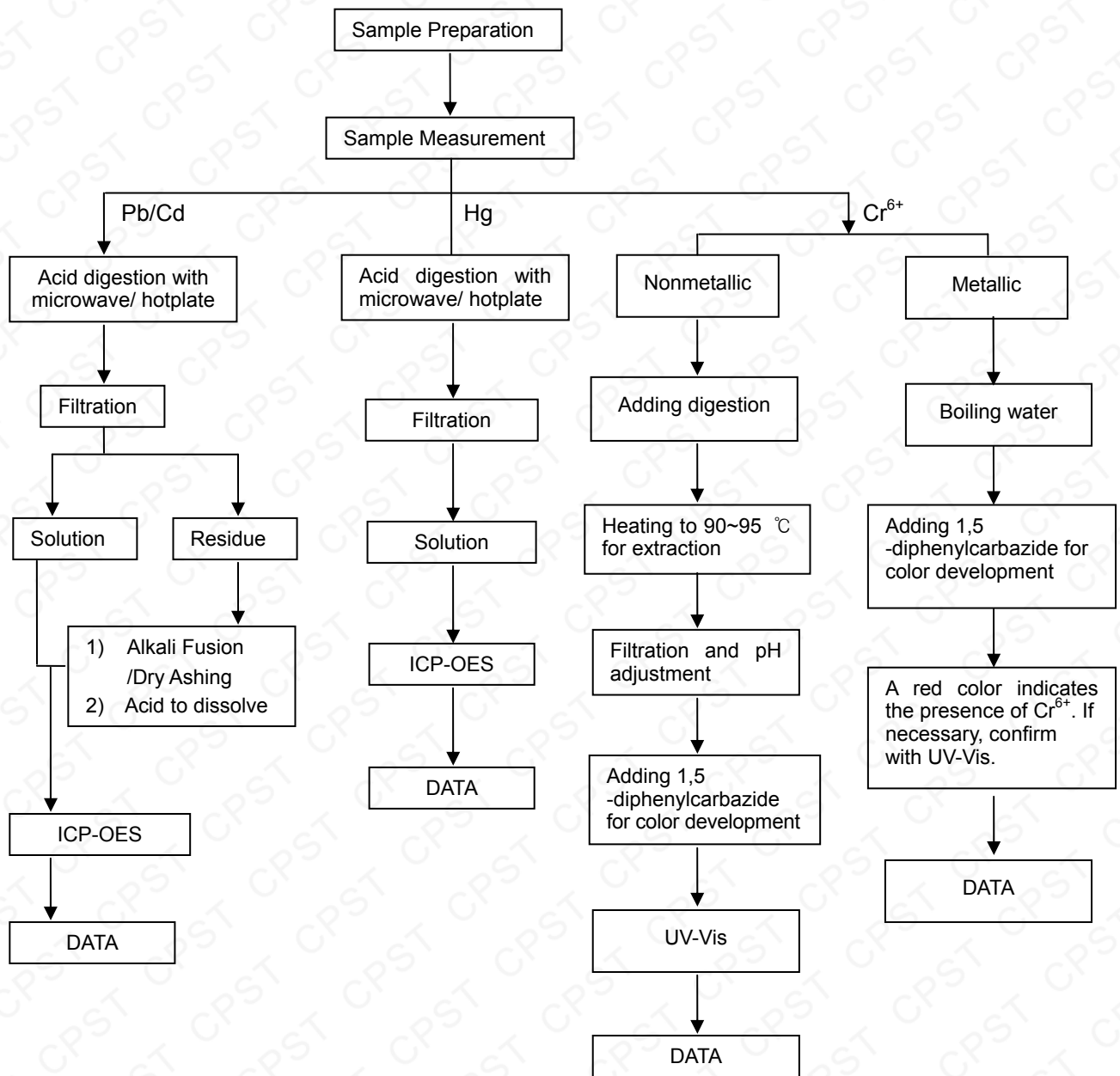
#### Note:

1. mg/kg = milligram per kilogram = ppm
2. N.D. = Not Detected (< MDL)
3. MDL = Method Detection Limit
4. “-” = Not Regulated
5. Boiling-water-extraction:  
Negative = Absence of Cr(VI) coating / surface layer: the detected concentration in boiling-water-extraction solution is less than 0.10µg with 1cm<sup>2</sup> sample surface area.  
Positive = Presence of Cr(VI) coating / surface layer: the detected concentration in boiling-water-extraction solution is greater than 0.13µg with 1cm<sup>2</sup> sample surface area.  
Inconclusive = the detected concentration in boiling-water-extraction solution is greater than 0.10µg and less than 0.13µg with 1cm<sup>2</sup> sample surface area.
6. Positive = result be regarded as not comply with RoHS requirement
7. Negative = result be regarded as comply with RoHS requirement

This Test Report is issued by the Company subject to its General Conditions of Service printed overleaf or available on request and accessible at [www.cpstlab.com](http://www.cpstlab.com). Attention is drawn to the limitations of liability, indemnification and jurisdictional issues defined therein. Unless otherwise stated the results shown in the test report refer only to the sample(s) tested. This test report cannot be reproduced, except in full, without prior written permission of the Company. Any unauthorized alteration, forgery or falsification of the content or appearance of this report is unlawful and offenders may be prosecuted to the fullest extent of the law.

### Pb/Cd/Hg/Cr<sup>6+</sup> Testing Flow Chart

- 1) Name of the person who made measurement: Andy Wang
- 2) Name of the person in charge of measurement: James Wang
- 3) These samples were dissolved totally by pre-conditioning method according to below flow chart.  
(Cr<sup>6+</sup> test method excluded)



\*\*\* End of Report \*\*\*

This Test Report is issued by the Company subject to its General Conditions of Service printed overleaf or available on request and accessible at [www.cpstlab.com](http://www.cpstlab.com). Attention is drawn to the limitations of liability, indemnification and jurisdictional issues defined therein. Unless otherwise stated the results shown in the test report refer only to the sample(s) tested. This test report cannot be reproduced, except in full, without prior written permission of the Company. Any unauthorized alteration, forgery or falsification of the content or appearance of this report is unlawful and offenders may be prosecuted to the fullest extent of the law.