

Water Pressure Booster Pumps



Model:TPS

YINJIA Pump is a professional surface clean water pump manufacturer in China since 1990, has specialized in manufacturing various of surface clean water pumps, as well as providing quality water pressure booster pumps for the world. We are committed to providing high quality product at a competitive price and backed up with superior service. Welcome to inquiry for water pressure booster pumps.

Yinjia pump as a professional high quality water pressure booster pumps manufacture, you can rest assured to buy water pressure booster pumps from our factory. TPS series water pressure booster pumps belongs to the single-phase self-priming peripheral pump category, is a best seller pump in the market. The pump is assembled with very resistant and durable materials which is able to guarantee a very high solidity and the almost total absence of wear over time. Pumps should be installed in a covered area, protected against the weather.

Product Feature And Application

• APPLICATIONS

- Suitable for use with clean water, or non-aggressive liquids only, without sand or other solid impurities.
- Suitable for small living water supply, automatic water sprinkler system, small air conditioner system or supporting equipment etc.

• DESIGN FEATURES

- Pump body/motor bracket: cast iron
- Impeller: Brass
- 100% copper winding
- Built-in thermal protector for single phase motor
- Motor shaft: AISI 304 welded shaft
- Mechanical seal: Graphite/Ceramic/NBR/S.S304

• SPECIAL FEATURES ON REQUEST

- Anti-rust treatment for casting
- No block system
- AISI 1045 motor shaft
- Carbon/SiC/V mechanical seal
- Other voltage and frequency
- Insulation class: F

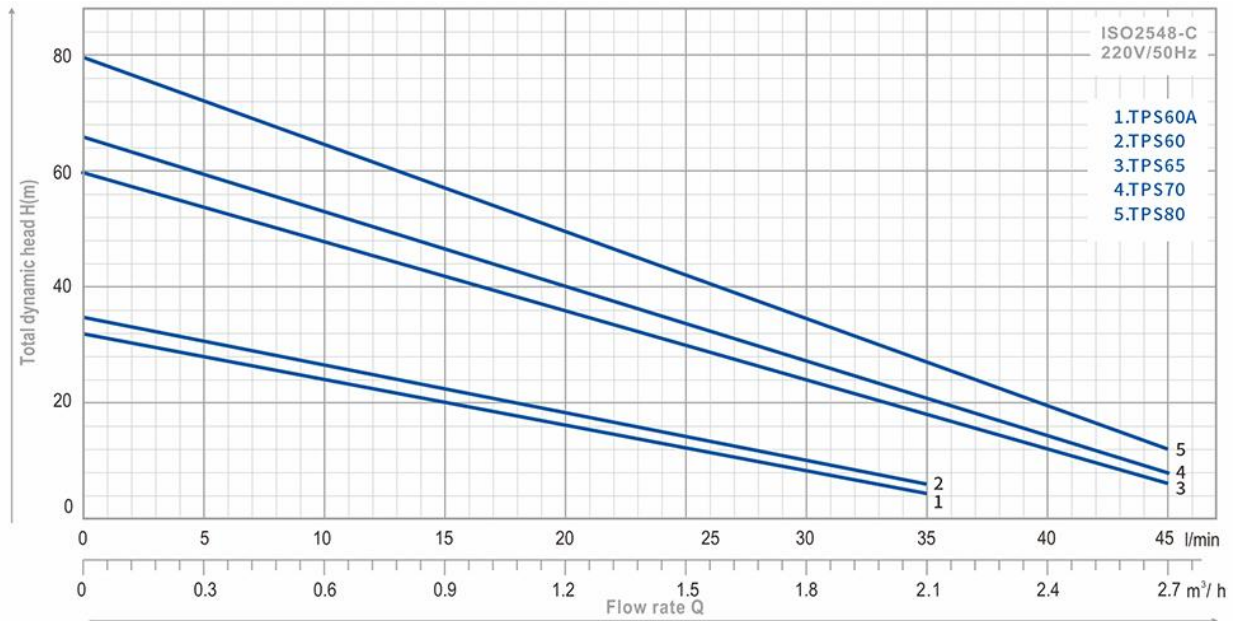
• OPERATING LIMITS

- Total suction lift up to 6-8 mt. with foot valve
- Max. operating pressure: 8 bar.
- Max. ambient temperature: +40 °C
- Max. liquid temperature: +90 °C
- Max. altitude: +1000 mt.

- MOTOR**
 - Insulation class: B
 - Protection: IP44
 - Speed of rotation: 2850rpm
 - Continuous duty: S1

Product Parameter (Specification)

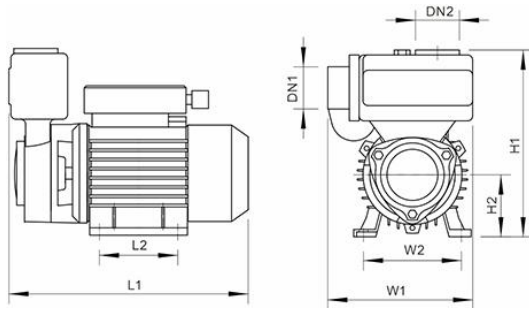
PERFORMANCE



TYPE	Power		μF	Ampere I max.	Q l/min m³/h	H (m)									DN1	DN2	N.W (kg)	Package Dimension (mm)		
	HP	kW				0	5	10	20	30	35	40	45	L				W	H	
TPS60A	0.3	0.22	8	1.7	32	28.5	25	17	8.5	4.5	-	-	1"	1"	6.5	255	175	218		
TPS60	0.5	0.37	8	1.9	35	31	27	19	10	6	-	-	1"	1"	7	255	175	218		
TPS65	0.75	0.55	16	3.7	60	54	48	36	23	18	12	6	1"	1"	10.8	295	195	235		
TPS70	1	0.75	20	4.5	65	60	53	40	28	21	14.5	8	1"	1"	12	295	195	235		
TPS80	1.5	1.1	30	7.0	80	72	64.5	50	34.5	27	19.5	12	1"	1"	13	310	195	245		

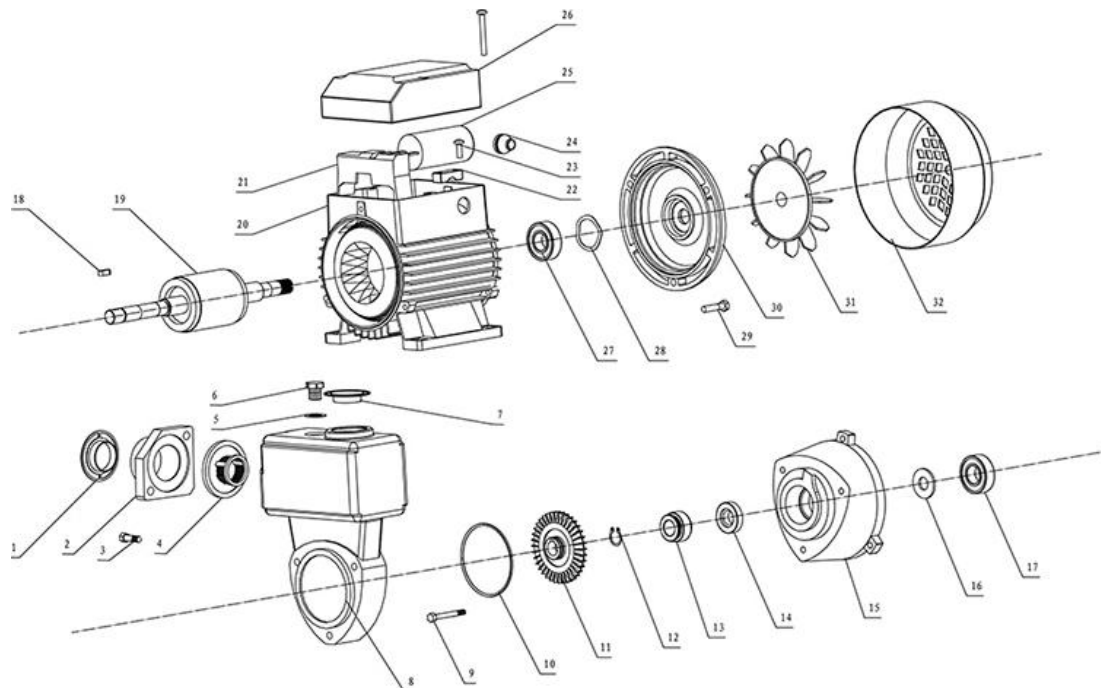
TPS60A - 0.22 kW / 0.3 HP - Max. Head 32m - Max. Flow 35 l/min - 1" water pump
 TPS60 - 0.37 kW / 0.5 HP - Max. Head 35m - Max. Flow 35 l/min - 1" water pump
 TPS65 - 0.55 kW / 0.75 HP - Max. Head 60m - Max. Flow 45 l/min - 1" water pump
 TPS70 - 0.75 kW / 1 HP - Max. Head 65m - Max. Flow 45 l/min - 1" water pump
 TPS80 - 1.1 kW / 1.5 HP - Max. Head 80m - Max. Flow 45 l/min - 1" water pump

DIMENSIONS



TYPE	L1	W1	H1	L2	W2	H2
TPS60A	235	150	195	82	100	63
TPS60	235	150	195	82	100	63
TPS65	272	175	213	90	112	71
TPS70	272	175	213	90	112	71
TPS80	307	183	223	101	125	80

TPS EXPLODING DRAWING



Ser.No.	Part Name	Ser.No.	Part Name	Ser.No.	Part Name
1	plastic cover	12	Snap ring	23	Screw
2	Flange	13	Mechanical Seal	24	Cable hocdey
3	Screw	14	Mechanical Seal	25	capacitor
4	Valve	15	Front Cover	26	Terminal box cover
5	Flat gasket	16	Splash Guard	27	Bearings
6	Drain Plug	17	Bearing	28	Spring Washer
7	plastic cover	18	Shaft Key	29	Screw
8	Pump Body	19	Rotor	30	End Motor Cover
9	Screw	20	Stator	31	Fan
10	O ring	21	Connection Poles	32	Fan Cover
11	Impeller	22	Pressing block		