



## Two Impeller High Pressure Pump

### Model:SCM2

YINJIA Pump is a professional surface clean water pump manufacturer in China since 1990, has specialized in manufacturing various of surface clean water pumps, as well as providing quality two impeller high pressure pump for the world. We are committed to providing high quality product at a competitive price and backed up with superior service. Welcome to inquiry for two impeller high pressure pump.

YINJIA is a professional China two impeller high pressure pump manufacturer and supplier, if you are looking for the best two impeller high pressure pump with low price, consult us now! SCM2 series two impeller high pressure pump belongs to the two impeller pump category, is a classical and popular pump in the global market. The main feature are the two opposite impellers which allow higher lifts than in the single-impeller model.

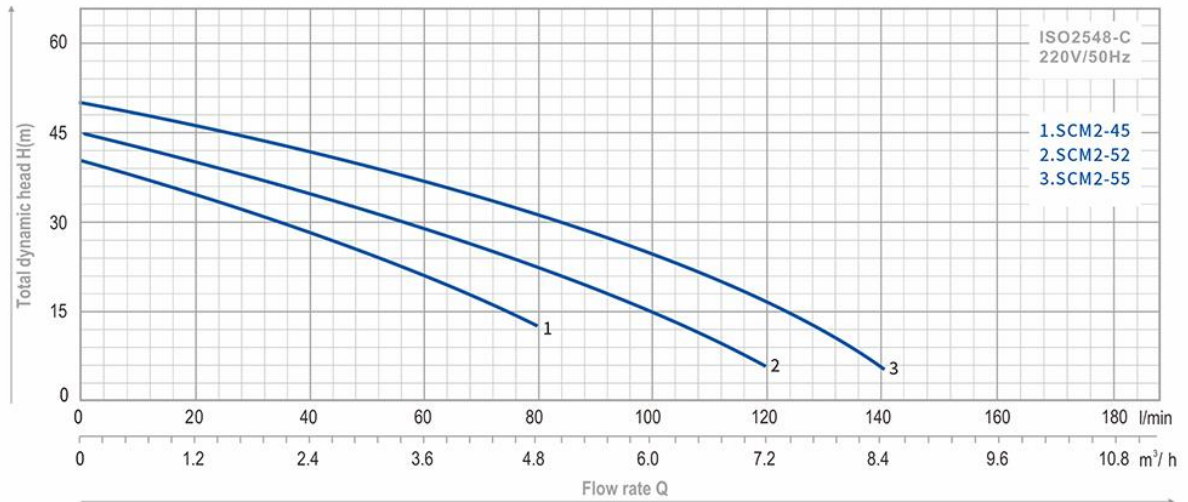
## Product Feature And Application

- **APPLICATIONS**
  - Twin impeller centrifugal water pumps to lift clean water and non-aggressive liquids. The main feature are the two opposite impellers which allow higher lifts than in the single-impeller model.
  - They are qualified for civil and industrial fittings, for water distribution by tank pressure groups and for irrigation in gardening and agriculture.
- **DESIGN FEATURES**
  - Pump body/motor bracket: cast iron
  - Impeller: Brass for 0.75-5.5kW, cast iron for 11-15kW
  - 100% copper winding
  - Built-in thermal protector for single phase motor
  - Motor shaft: AISI 304 welded shaft
  - Mechanical seal: Graphite/Ceramic/NBR/S.S304
- **SPECIAL FEATURES ON REQUEST**
  - Anti-rust treatment for casting
  - AISI 1045 motor shaft
  - Carbon/SiC/V mechanical seal
  - Other voltage and frequency
  - Insulation class: F
- **OPERATING LIMITS**
  - Total suction lift up to 6-8 mt. with foot valve
  - Max. operating pressure: 8 bar.
  - Max. ambient temperature: +40 °C
  - Max. liquid temperature: +90 °C
  - Max. altitude: +1000 mt.
- **MOTOR**
  - Insulation class: B
  - Protection: IP44

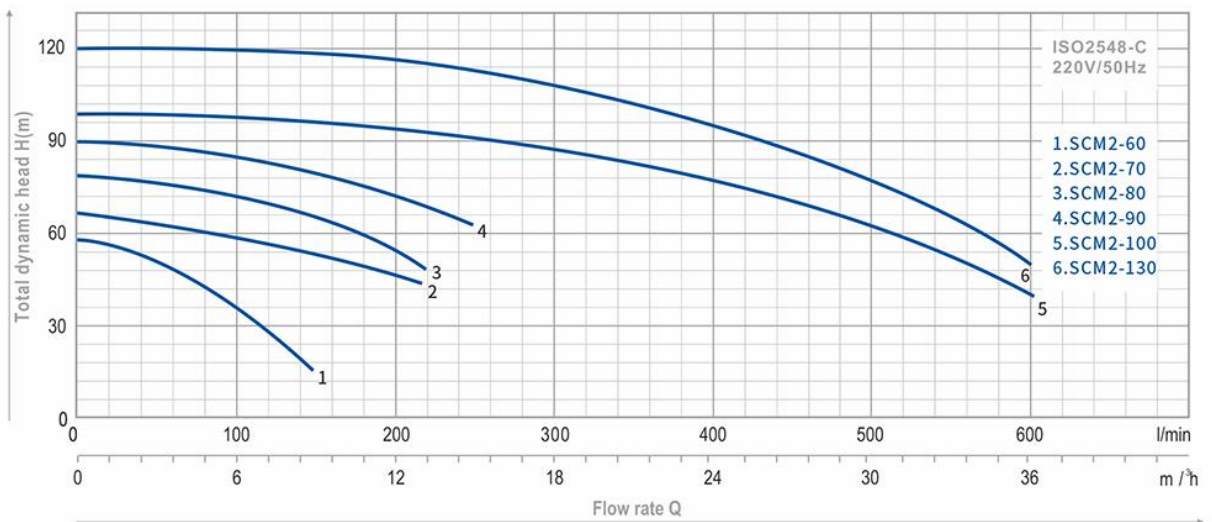
- Speed of rotation: 2850rpm
- Continuous duty: S1

## Product Parameter (Specification)

### PERFORMANCE CHART

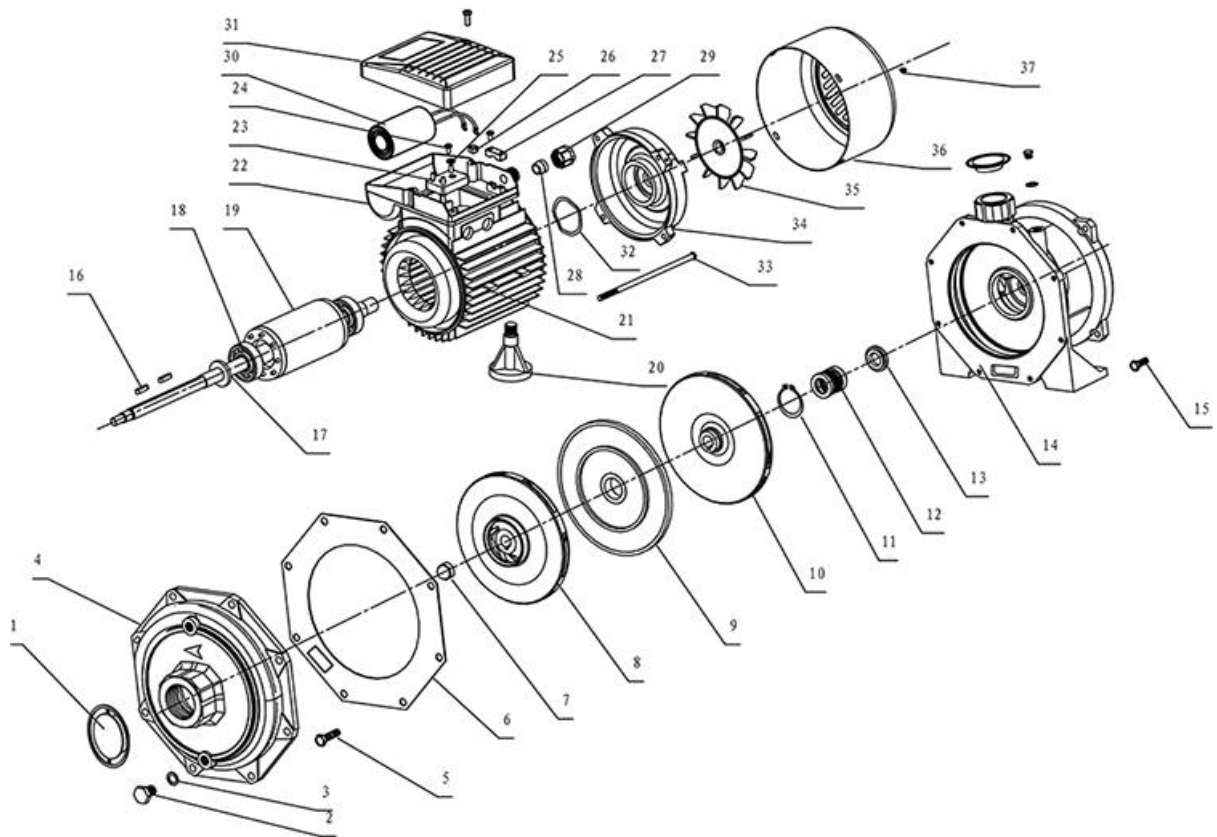


TYPE	Power		μF	Ampere I max.	Q l/min m³/h	Flow rate Q								DN1	DN2	Package Dimension (mm)		
	HP	kW				0	20	40	60	80	100	120	140			L	W	H
SCM2-45	1	0.75	20	5.5	H (m)	40	35	29	21	12.5	-	-	-	1.25"	1"	375	205	260
SCM2-52	1.5	1.1	30	8.5		45	40	35	29	22	15	6	-	1.25"	1"	445	255	318
SCM2-55	2	1.5	35	9.7		50	46.5	42	37.5	31	25	17	5.5	1.25"	1"	445	255	318



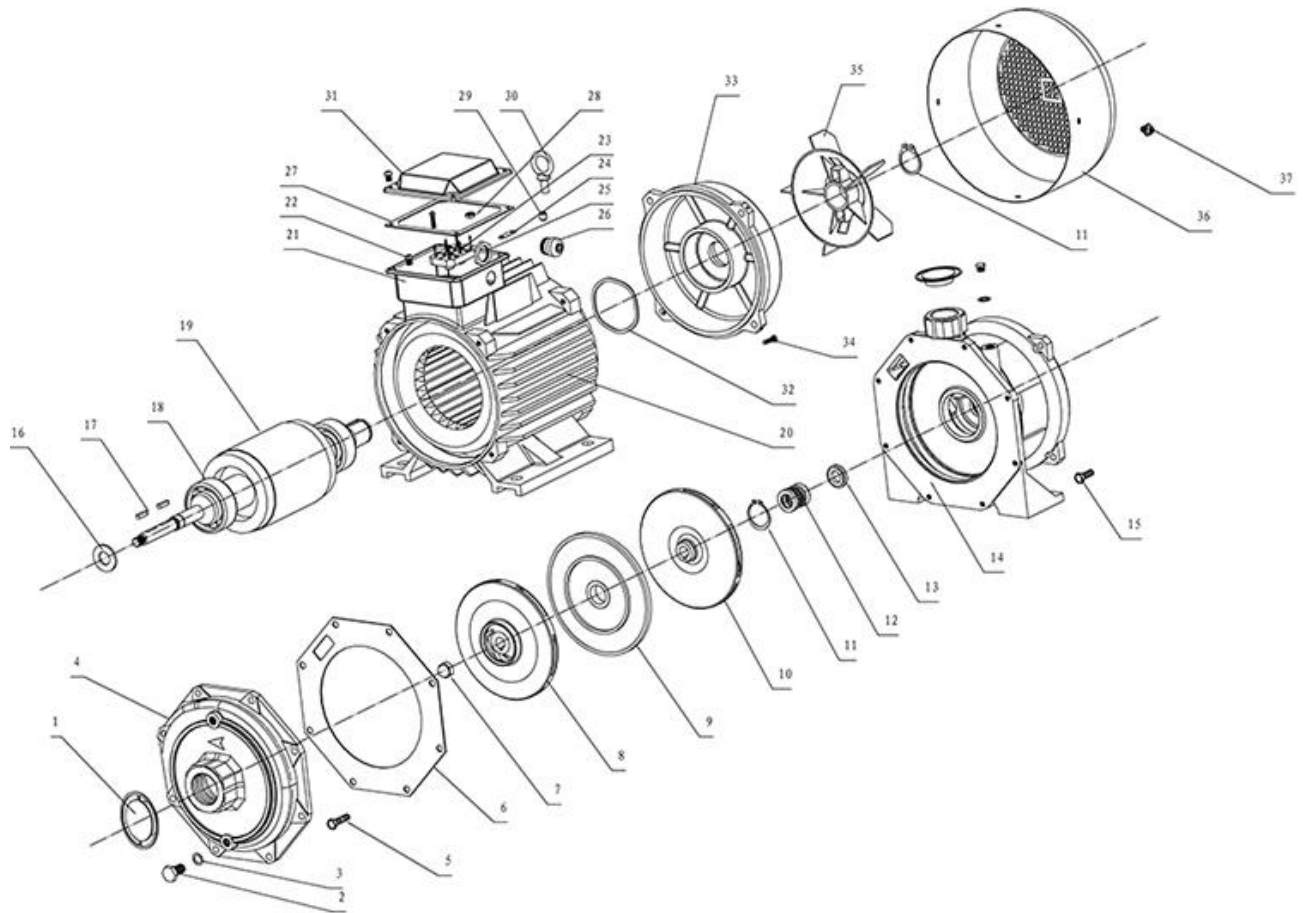
TYPE	Power		Q l/min m <sup>3</sup> /h	0	25	50	100	125	150	175	200	250	300	400	500	600	DN1	DN2	Package Dimension (mm)		
	HP	kW		0	1.5	3	6	7.5	9	10.5	12	15	18	24	30	36			L	W	H
SCM2-60	3	2.2	H (m)	57	54	50	33	22	15.5	-	-	-	-	-	-	-	1.25"	1"	445	255	318
SCM2-70	4	3		70	64	63.5	58.5	55	51.5	48	45	-	-	-	-	-	1.5"	1.25"	535	315	390
SCM2-80	5.5	4		78	77	76	72	69.5	66	62.5	59	-	-	-	-	-	1.5"	1.25"	560	316	415
SCM2-90	7.5	5.5		90	89	88.5	85	82.5	79	76.5	72.5	63	-	-	-	-	1.5"	1.25"	610	320	440
SCM2-100	15	11		98	98	98	98	97	96.5	95.5	94	91.5	87.5	78	62.5	41	2"	1.5"	755	370	570
SCM2-130	20	15		120	120	119.5	118	117	116	115	114	110	106	92	75	50	2"	1.5"	755	370	570

### SCM2-45/52/55/60



Ser.No.	Part Name	Ser.No.	Part Name	Ser.No.	Part Name
1	plastic cover	14	Pump body	27	Pressing block
2	Drain Plug	15	Screw	28	Cable Hocdey
3	flat gasket	16	Shaft key	29	Water-Proof plug
4	pump cover	17	Splash guard	30	Capacitor
5	Screw	18	Bearing	31	Terminal box Cover
6	Rubber Washer	19	rotor	32	Spring Washer
7	Self-locking Nut	20	supporting foot	33	Screw
8	Impeller	21	Stator	34	End Motor Cover
9	Cover Board	22	Terminal box	35	Fan
10	Impeller	23	Connection Poles	36	Fan Cover
11	Snap ring	24	Self-locking Nut	37	Screw
12	Mechanical seal	25	flat gasket		
13	Mechanical seal	26	Screw		

### SCM2-70/80/90



Ser.No.	Part Name	Ser.No.	Part Name	Ser.No.	Part Name
1	plastic cover	14	Front cvoer	27	Terinal seal IP54
2	Drain Plug	15	Screw	28	Self-locking nut
3	flat gasket	16	Splash guard	29	Screw
4	pump body	17	Shaft key	30	Flying board
5	Screw	18	Bearing	31	Terminal box Cover
6	Rubber Washer	19	rotor	32	Spring Washer
7	Self-locking Nut	20	Stator	33	End Motor Cover
8	Impeller	21	Terminal box	34	Screw
9	Cover Board	22	Screw	35	Fan
10	Impeller	23	Connection Poles	36	Fan Cover
11	Snap ring	24	Connect block	37	Screw
12	Mechanical seal	25	Self-locking nut		
13	Mechanical seal	26	Cable hocdey		