

Stainless Steel Centrifugal Pump



Model: CSm

YINJIA Pump is a professional surface clean water pump manufacturer in China since 1990, has specialized in manufacturing various of surface clean water pumps, as well as providing quality stainless steel centrifugal pump for the world. We are committed to providing high quality product at a competitive price and backed up with superior service. Welcome to inquiry for stainless steel centrifugal pump.

CSm series stainless steel centrifugal pump belongs to the single-phase centrifugal pump category, compact design and very silent. All of the components in contact with the pumped liquid are constructed from stainless steel AISI 304, thus guaranteeing complete hygiene and maximum resistance against corrosion. Pumps should be installed in a covered area, protected against the weather.

Product Feature And Application

• APPLICATIONS

- Suitable for use with clean water, or non-aggressive liquids only, without sand or other solid impurities.
- Suitable for industrial use and urban water supply, pressure boosting for high buildings and fire fighting, garden irrigation, long-distance water transfer, heating ventilation and air conditioning, circulation and pressure boosting for cold hot water, and supporting equipment etc.

• DESIGN FEATURES

- Pump body/Impeller: S.S304
- Motor bracket: Aluminium
- 100% copper winding
- Built-in thermal protector for single phase motor
- Motor shaft: AISI 304 welded shaft
- Mechanical seal: Graphite/Ceramic/NBR/S.S304

• SPECIAL FEATURES ON REQUEST

- Carbon/SiC/V mechanical seal
- Other voltage and frequency
- Insulation class: F

• OPERATING LIMITS

- Total suction lift up to 6-8 mt. with foot valve.
- Max. operating pressure: 8 bar.
- Max. ambient temperature: +40 °C
- Max. liquid temperature: +90 °C
- Max. altitude: +1000 mt.

• MOTOR

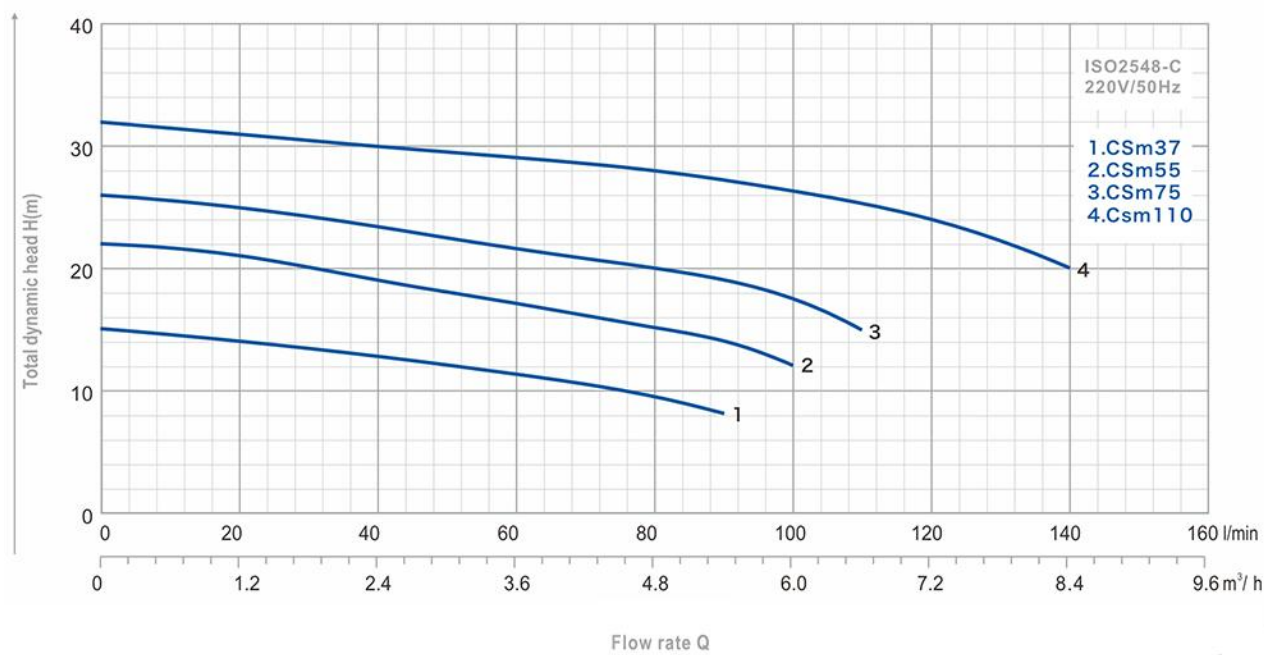
- Insulation class: B
- Protection: IP44
- Speed of rotation: 2850rpm
- Continuous duty: S1

Fujian New Yinjia Pump Co., Ltd.

Tel: [+86-593-6558888](tel:+86-593-6558888)

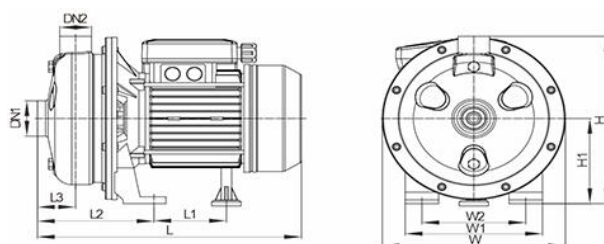
E-mail: sales-sh@inija.com

Product Parameter (Specification)



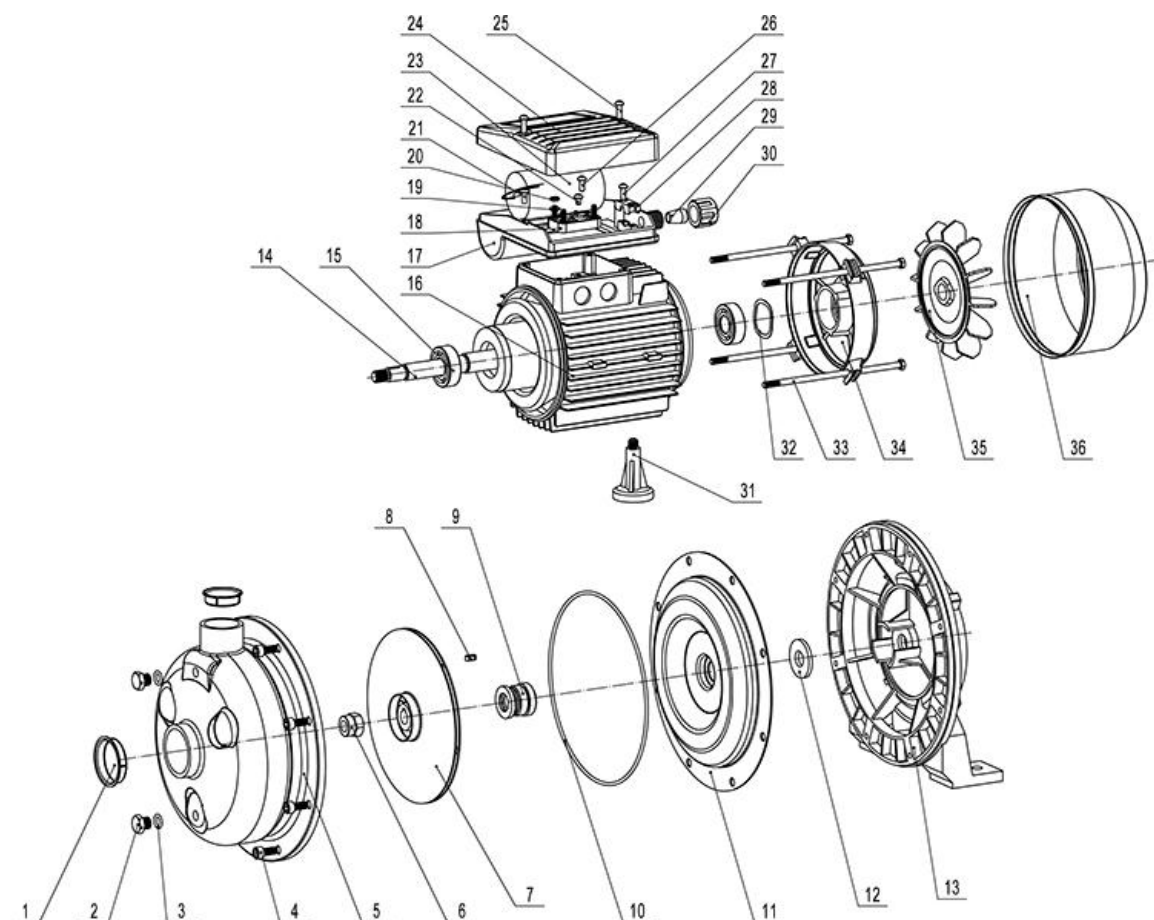
| TYPE | Power | | μF | Ampere I max. | Q l/min m³/h | 0 | 20 | 40 | 60 | 80 | 90 | 100 | 110 | 120 | 140 | DN1 | DN2 | N.W (kg) | Package Dimension (mm) | | |
|--------|-------|------|----|------------------|--------------------|----|-----|------|------|------|-----|------|------|-----|-----|-------|-----|-------------|---------------------------|-----|-----|
| | HP | kW | | | | 0 | 1.2 | 2.4 | 3.6 | 4.8 | 5.4 | 6.0 | 6.6 | 7.2 | 8.4 | | | | L | W | H |
| CSm37 | 0.5 | 0.37 | 12 | 2.2 | H (m) | 15 | 14 | 13 | 11.5 | 9.5 | 8 | - | - | - | - | 1.25" | 1" | 6.5 | 310 | 185 | 215 |
| CSm55 | 0.75 | 0.55 | 16 | 4.0 | | 22 | 21 | 19 | 17 | 15.5 | 14 | 12 | - | - | - | 1.25" | 1" | 8.5 | 330 | 230 | 245 |
| CSm75 | 1 | 0.75 | 20 | 5.0 | | 26 | 25 | 23.5 | 21.5 | 20 | 19 | 17.5 | 15 | - | - | 1.25" | 1" | 9.6 | 330 | 230 | 245 |
| CSm110 | 1.5 | 1.1 | 30 | 7.5 | | 32 | 31 | 30 | 29 | 28 | 27 | 26.5 | 25.5 | 24 | 20 | 1.25" | 1" | 14.5 | 405 | 250 | 295 |

DIMENSIONS



| TYPE | L | W | H | L1 | L2 | L3 | W1 | W2 | H1 |
|--------|-----|-----|-----|-----|----|----|-----|-----|-----|
| CSm37 | 290 | 172 | 195 | 90 | 79 | 52 | 130 | 100 | 87 |
| CSm55 | 310 | 215 | 220 | 117 | 40 | 45 | 160 | 120 | 112 |
| CSm75 | 310 | 215 | 220 | 117 | 40 | 45 | 160 | 120 | 112 |
| CSm110 | 385 | 235 | 255 | 123 | 92 | 53 | 180 | 139 | 120 |

CSm Series Exploding Drawing



| Seri No. | Part name | Seri No. | Part name | Seri No. | Part name |
|----------|------------------|----------|--------------------|----------|-----------------|
| 1 | Plastic Cover | 13 | Front Cover | 25 | Screw |
| 2 | Drain Plug | 14 | Rotor | 26 | Screw |
| 3 | O Ring | 15 | Bearing | 27 | Screw |
| 4 | Bolt | 16 | Stator | 28 | Pressing Block |
| 5 | Pump Body | 17 | Terminal Box | 29 | Cable Seal |
| 6 | Self-Locking Nut | 18 | Connection Poles | 30 | Cable Presser |
| 7 | Impeller | 19 | Washer | 31 | Supporting Foot |
| 8 | Shaft Key | 20 | Nut | 32 | Spring Washer |
| 9 | Mechanical Seal | 21 | Screw | 33 | Tie Bolt |
| 10 | O Ring | 22 | Screw | 34 | End Motor Cover |
| 11 | Pump Cover | 23 | Capacitor | 35 | Fan |
| 12 | Spring Washer | 24 | Terminal Box Cover | 36 | Fan Cover |