

## New Jet Pump For House Well



### Model:JLm

YINJIA Pump is a professional surface clean water pump manufacturer in China since 1990, has specialized in manufacturing various of surface clean water pumps, as well as providing quality new JET pump for house well for the world. We are committed to providing high quality product at a competitive price and backed up with superior service. Welcome to inquiry for new JET pump for house well.

JLm series new JET pump for house well belongs to the single-phase self-priming JET pump category, is our patent design pump, attractive appearance, compact and very silent. The pump is assembled with very resistant and durable materials which is able to guarantee a very high solidity and the almost total absence of wear over time. The middle east market prefer to use diffuser in cast iron, nozzle in brass. Pumps should be installed in a covered area, protected against the weather.

## Product Feature And Application

### • APPLICATIONS

- Suitable for use with clean water, or non-aggressive liquids only, without sand or other solid impurities.
- Suitable for small living water supply, automatic water sprinkler system, small air conditioner system or supporting equipment etc.

### • DESIGN FEATURES

- Pump body/motor bracket: cast iron
- Impeller: Brass
- Ejection union: PPO
- 100% copper winding
- Built-in thermal protector for single phase motor
- Motor shaft: AISI 304 welded shaft
- Mechanical seal: Graphite/Ceramic/NBR/S.S304

### • SPECIAL FEATURES ON REQUEST

- Anti-rust treatment for casting
- PPO/SUS304 impeller
- Cast iron diffuser, brass nozzle
- AISI 1045 motor shaft
- Carbon/SiC/V mechanical seal
- Other voltage and frequency
- Insulation class: F

### • OPERATING LIMITS

- Total suction lift up to 9 mt. with foot valve
- Max. operating pressure: 8 bar.
- Max. ambient temperature: +40 °C
- Max. liquid temperature: +60 °C
- Max. altitude: +1000 mt.

Fujian New Yinjia Pump Co.,Ltd.

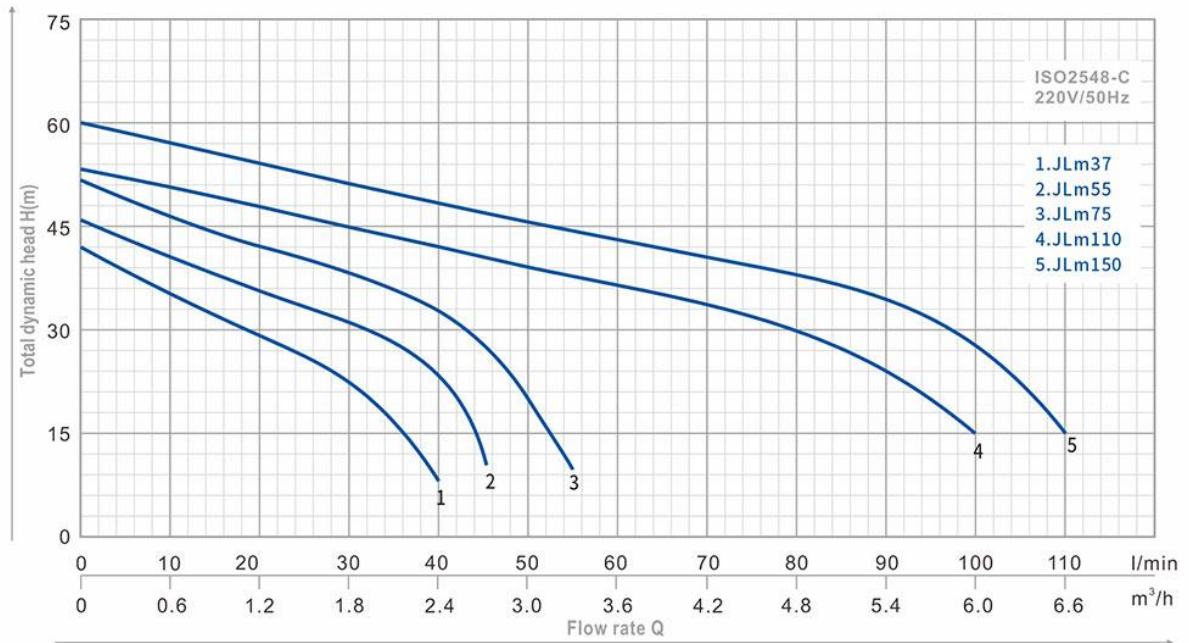
Tel: [+86-593-6558888](tel:+86-593-6558888)

E-mail: [sales-sh@inija.com](mailto:sales-sh@inija.com)

- MOTOR**
  - Insulation class: B
  - Protection: IP44
  - Speed of rotation: 2850rpm
  - Continuous duty: S1

## Product Parameter (Specification)

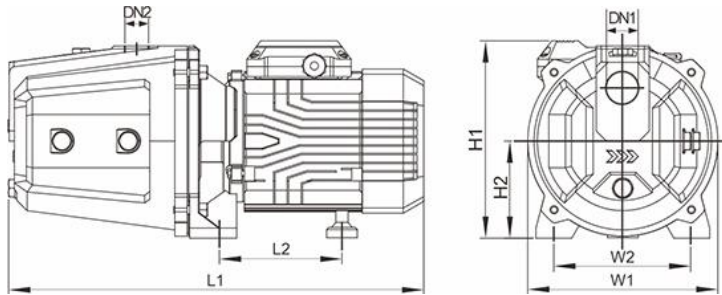
### PERFORMANCE



TYPE	Power		μF	Ampere I max.	Q l/min m <sup>3</sup> /h	0	10	20	30	40	45	50	55	60	80	100	110	DN1	DN2	N.W (kg)	Package Dimension (mm)		
	HP	kW				0	0.6	1.2	1.8	2.4	2.7	3	3.3	3.6	4.8	6	6.6				L	W	H
JLm37	0.5	0.37	12	2.5	42	34.5	28	22.5	8	-	-	-	-	-	-	-	1"	1"	8	430	215	220	
JLm55	0.75	0.55	16	4.0	46	40.5	36	31	23.5	10	-	-	-	-	-	-	1"	1"	11	430	215	220	
JLm75	1	0.75	20	5.0	52	47	43	39	33	28	20	10	-	-	-	-	1"	1"	12	430	215	220	
JLm110	1.5	1.1	35	8	53	51	48	45	42	40.5	39	37.5	36.5	30	15	-	1.25"	1"	20.5	575	260	265	
JLm150	2	1.5	45	10	60	57	54	51.5	48.5	47	45.5	44	43	38	28	15	1.25"	1"	22.5	575	260	265	

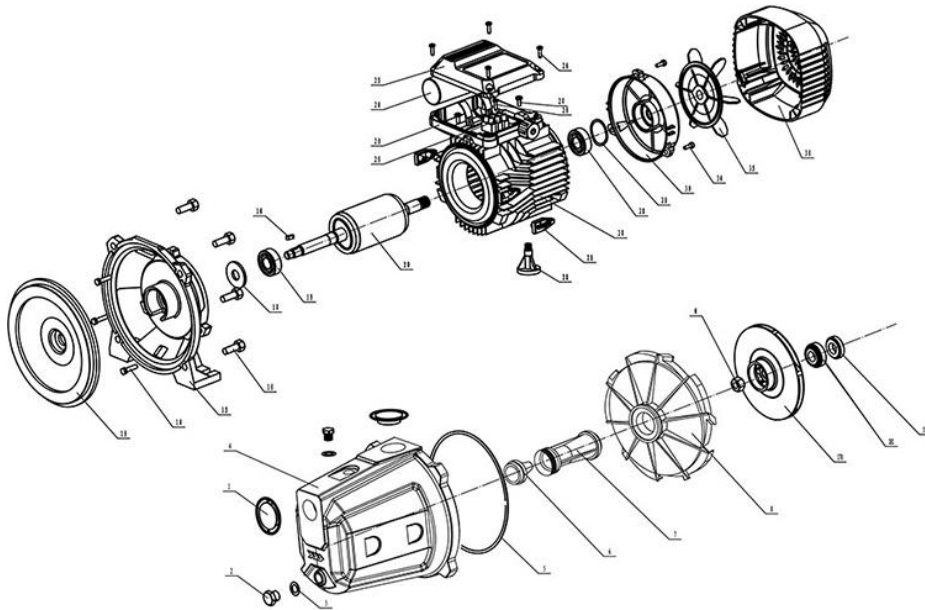
JLm37 - 0.37 kW / 0.5 HP - Max. Head 42m - Max. Flow 40 l/min - 1" water pump  
 JLm55 - 0.55 kW / 0.75 HP - Max. Head 46m - Max. Flow 45 l/min - 1" water pump  
 JLm75 - 0.75 kW / 1 HP - Max. Head 52m - Max. Flow 55 l/min - 1" water pump  
 JLm110 - 0.75 kW / 1 HP - Max. Head 53m - Max. Flow 100 l/min - 1" water pump  
 JLm150 - 0.75 kW / 1 HP - Max. Head 60m - Max. Flow 110 l/min - 1" water pump

### DIMENSIONS



TYPE	L1	W1	H1	L2	W2	H2
JLm37	408	186	193	117	138	95
JLm55	408	186	193	117	138	95
JLm75	408	186	193	117	138	95
JLm110	523	227	230	138	170	115
JLm150	523	227	230	138	170	115

### JLM SERIES EXPLODING DRAWING



Ser.No.	Part Name	Ser.No.	Part Name	Ser.No.	Part Name
1	Plastic cover	13	Pump Cover	25	Terminal box cover
2	Drain plug	14	Screw	26	Connection board
3	washer	15	Front Cover	27	Screw
4	Pump body	16	Screw	28	Screw
5	O ring	17	Snap ring	29	Screw
6	Nozzle	18	Bearing	30	Stator
7	tube	19	Shaft key	31	Bearing
8	Diffusor	20	Rotor	32	Spring washer
9	Tie bolt	21	Foot	33	End motor cover
10	Impeller	22	Terminal box base	34	Screw
11	Mechanical seal	23	Rotor	35	Fan
12	Mechanical seal	24	Capactor	36	Fan cover