

New Centrifugal Pump



Model:Cm

YINJIA Pump is a professional surface clean water pump manufacturer in China since 1990, has specialized in manufacturing various of surface clean water pumps, as well as providing quality new centrifugal pump for the world. We are committed to providing high quality product at a competitive price and backed up with superior service. Welcome to inquiry for new centrifugal pump.

You are welcomed to come to YINJIA factory to buy the latest selling, low price, and high-quality new centrifugal pump. We look forward to cooperating with you. Cm series new centrifugal pump belongs to the single-phase centrifugal pump category, is our patent design pump, attractive appearance, compact and very silent. The Heavy duty electric water pump is assembled with very resistant and durable materials which is able to guarantee a very high solidity and the almost total absence of wear over time. Pumps should be installed in a covered area, protected against the weather.

Product Feature And Application

• APPLICATIONS

- Suitable for use with clean water, or non-aggressive liquids only, without sand or other solid impurities.
- Suitable for industrial use and urban water supply, pressure boosting for high buildings and fire fighting, garden irrigation, long-distance water transfer, heating ventilation and air controlling, circulation and pressure boosting for cold hot water, and supporting equipment etc.

• DESIGN FEATURES

- Pump body/motor bracket: cast iron
- Impeller: Brass
- 100% copper winding
- Built-in thermal protector for single phase motor
- Motor shaft: AISI 304 welded shaft
- Mechanical seal: Graphite/Ceramic/NBR/S.S304

• SPECIAL FEATURES ON REQUEST

- Anti-rust treatment for casting
- PPO/SUS304 impeller
- AISI 1045 motor shaft
- Carbon/SiC/V mechanical seal
- Other voltage and frequency
- Insulation class: F

• OPERATING LIMITS

- Total suction lift up to 6-8 mt. with foot valve
- Max. operating pressure: 8 bar.
- Max. ambient temperature: +40 °C
- Max. liquid temperature: +90 °C
- Max. altitude: +1000 mt.

Fujian New Yinjia Pump Co., Ltd.

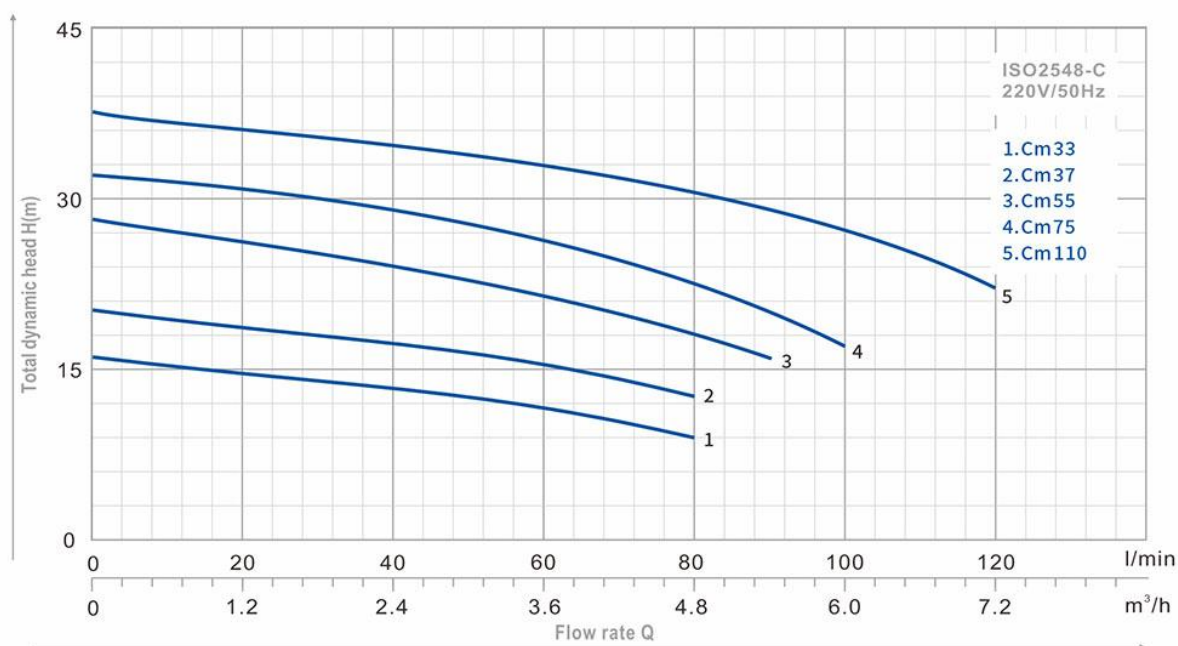
Tel: +86-593-6558888

E-mail: sales-sh@inija.com

- MOTOR**
 - Insulation class: B
 - Protection: IP44
 - Speed of rotation: 2850rpm
 - Continuous duty: S1

Product Parameter (Specification)

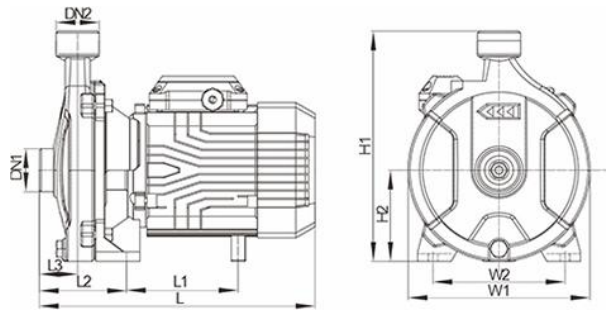
PERFORMANCE



TYPE	Power		μF	Ampere I max.	Q l/min m³/h	0	20	40	60	80	90	100	120	DN1	DN2	N.W (kg)	Package Dimension (mm)		
	HP	kW				0	1.2	2.4	3.6	4.8	5.4	6.0	7.2				L	W	H
Cm33	0.45	0.33	8	2.0	H (m)	16	14.5	13.5	11.5	9	-	-	-	1"	1"	8.5	280	190	230
Cm37	0.5	0.37	12	2.2		20	18.5	17.5	15.5	13	-	-	-	1"	1"	9	280	190	230
Cm55	0.75	0.55	16	4.0		28	25	24	21	18	16	-	-	1"	1"	11	305	205	260
Cm75	1	0.75	20	5.0		32	31	29	26	24	20	17	-	1"	1"	12	305	205	260
Cm110	1.5	1.1	30	7.5		37.5	36	34.5	32.8	30.5	28.9	26.9	22	1.25"	1"	21	395	265	320

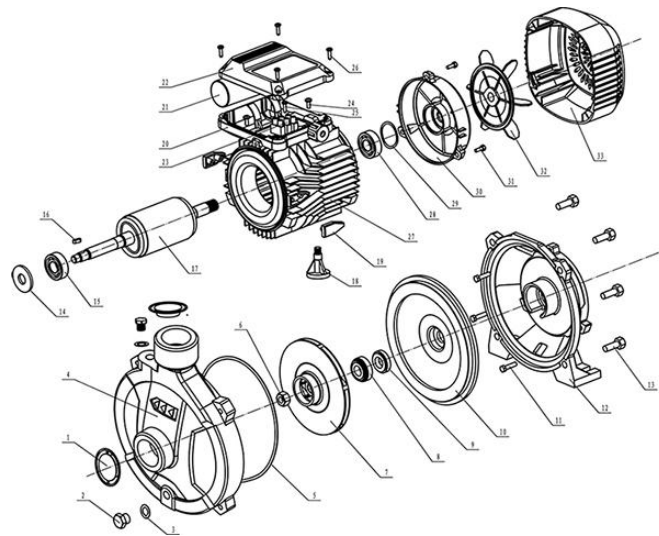
Cm33 - 0.33 kW / 0.45 HP - Max. Head 18m - Max. Flow 80 l/min - 1" water pump
 Cm37 - 0.37 kW / 0.5 HP - Max. Head 22m - Max. Flow 90 l/min - 1" water pump
 Cm55 - 0.55 kW / 0.75 HP - Max. Head 28m - Max. Flow 90 l/min - 1" water pump
 Cm75 - 0.75 kW / 1 HP - Max. Head 32m - Max. Flow 100 l/min - 1" water pump
 Cm110 - 1.1 kW / 1.5 HP - Max. Head 37.5m - Max. Flow 120 l/min - 1.25"1" water pump

DIMENSIONS



TYPE	L	W1	H1	L1	L2	L3	W2	H2
Cm33	265	157	205	105	89	40	112	85
Cm37	265	157	205	105	89	40	112	85
Cm55	290	190	240	117	91	40	138	95
Cm75	290	190	240	117	91	40	138	95
Cm110	358	215	275	190	121	52	180	110

CM SERIES EXPLODING DRAWING



Ser.No.	Part Name	Ser.No.	Part Name	Ser.No.	Part Name
1	Plastic cover	12	Front cover	23	Coonection poles
2	Drain plug	13	Screw	24	Screw
3	Flat gasket	14	Splash guard	25	Screw
4	Pump body	15	Bearing	26	Screw
5	O ring	16	Shaft key	27	Stator
6	Self-locking nut	17	Rotor	28	Bearing
7	Impeller	18	Supporting foot	29	Spring washer
8	Mechanical seal	19	Logo Block	30	End cover
9	Mechanical seal	20	Terminal box	31	Screw
10	Pump cover	21	Capacitor	32	Fan
11	Screw	22	Terminal box cover	33	Fan cvoer