

New Centrifugal Pump For Water System



Model:Cm/A

YINJIA Pump is a professional surface clean water pump manufacturer in China since 1990, has specialized in manufacturing various of surface clean water pumps, as well as providing quality new centrifugal pump for water system for the world. We are committed to providing high quality product at a competitive price and backed up with superior service. Welcome to inquiry for new centrifugal pump for water system.

High quality new centrifugal pump For Water System is offered by China manufacturer YINJIA. Buy new centrifugal pump which is of high quality directly with low price. Cm/A series new centrifugal pump for water system belongs to the electrical centrifugal pump category, is our patent design pump, attractive appearance and very silent. Single phase and three phase are available. Single impeller centrifugal pumps suitable to cover any small, medium or large capacity request, for domestic, agricultural and industrial purposes. Pumps should be installed in a covered area, protected against the weather.

Product Feature And Application

- **APPLICATIONS**
 - Suitable for use with clean water, or non-aggressive liquids only, without sand or other solid impurities.
 - Suitable for industrial use and urban water supply, pressure boosting for high buildings and fire fighting, garden irrigation, long-distance water transfer, heating ventilation and air conditioning, circulation and pressure boosting for cold hot water, and supporting equipment etc.
- **DESIGN FEATURES**
 - Pump body/motor bracket: cast iron
 - Impeller: Brass for <1.5", cast iron for 2"
 - 100% copper winding
 - Built-in thermal protector for single phase motor
 - Motor shaft: AISI 304 welded shaft
 - Mechanical seal: Graphite/Ceramic/NBR/S.S304
- **SPECIAL FEATURES ON REQUEST**
 - Anti-rust treatment for casting
 - Impeller: PPO for 1Cm15, Brass for 2"
 - AISI 1045 motor shaft
 - Carbon/SiC/V mechanical seal
 - Other voltage and frequency
 - Insulation class: F
- **OPERATING LIMITS**
 - Total suction lift up to 6-8 mt. with foot valve
 - Max. operating pressure: 8 bar.
 - Max. ambient temperature: +40 °C

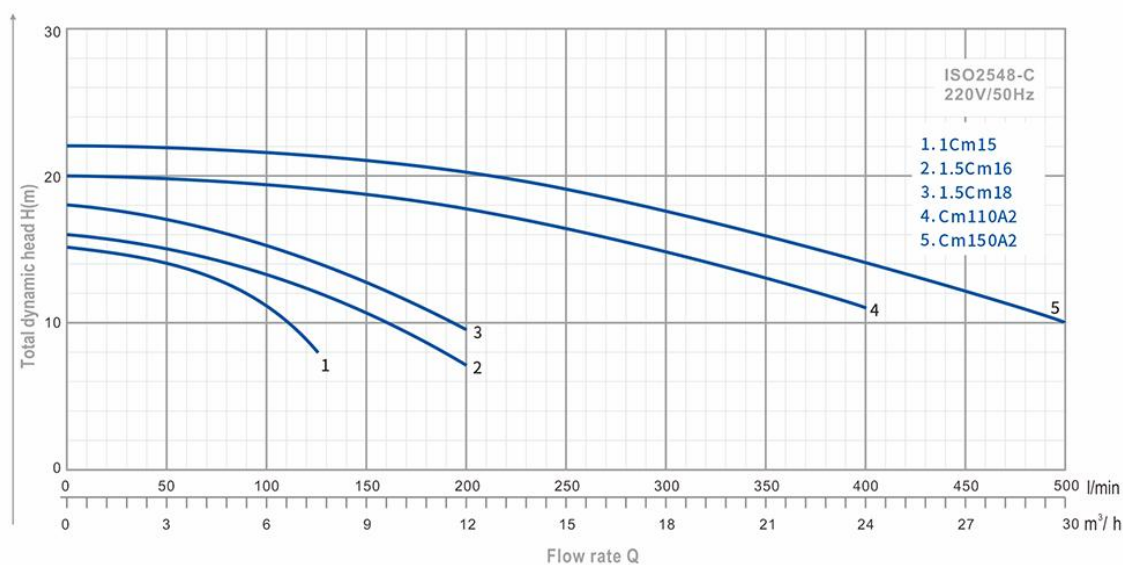
- Max. liquid temperature: +90 °C
- Max. altitude: +1000 mt.

• MOTOR

- Insulation class: B
- Protection: IP44
- Speed of rotation: 2850rpm
- Continuous duty: S1

Product Parameter (Specification)

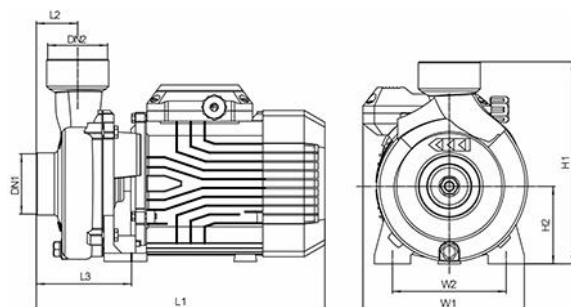
PERFORMANCE



TYPE	Power		μF	Ampere I max.	Q l/min m³/h	0	50	100	125	150	200	250	300	350	400	450	500	DN1	DN2	N.W (kg)	Package Dimension (mm)		
	HP	kW				0	3	6	7.5	9	12	15	18	21	24	27	30				L	W	H
1Cm15	0.5	0.37	12	2.1	H (m)	15	14	11	8	-	-	-	-	-	-	-	-	1"	1"	8	315	170	205
1.5Cm16	0.75	0.55	16	3.7		16	15	13.5	12	10.5	7.2	-	-	-	-	-	-	1.5"	1.5"	11	330	190	235
1.5Cm18	1	0.75	20	4.5		18	17	15.5	14	13	9.5	-	-	-	-	-	-	1.5"	1.5"	12.2	330	190	235
Cm110A2	1.5	1.1	30	6.5		20	19.8	19.5	19	18.5	18	16.5	15	13	11	-	-	2"	2"	20	400	250	290
Cm150A2	2	1.5	35	8.5		22	22	21.8	21.4	21	20	19	18	16	14	12	10	2"	2"	21	400	250	290

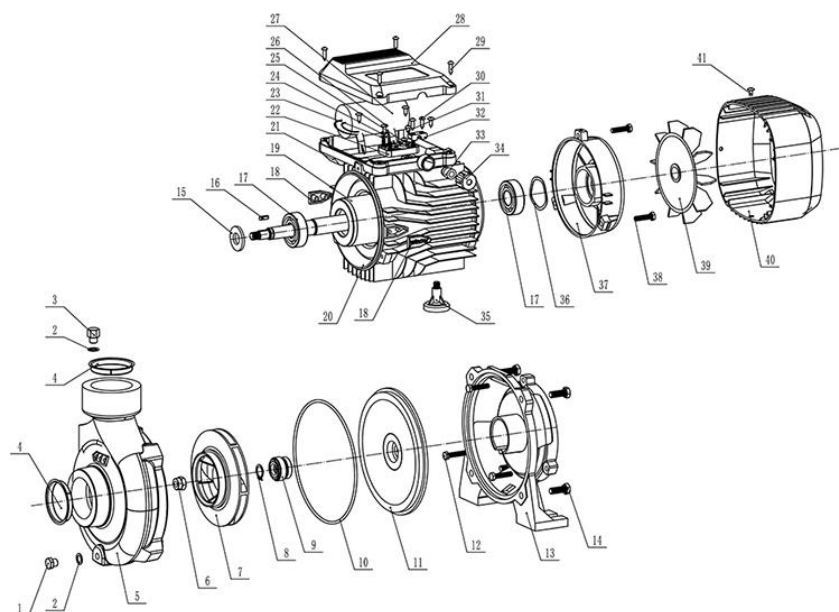
1Cm15 - 0.37 kW / 0.5 HP - Max. Head 15m - Max. Flow 125 l/min - 1" water pump
 1.5Cm16 - 0.55 kW / 0.75 HP - Max. Head 16m - Max. Flow 200 l/min - 1.5" water pump
 1.5Cm18 - 0.75 kW / 1 HP - Max. Head 18m - Max. Flow 200 l/min - 1.5" water pump
 Cm110A2 - 1.1 kW / 1.5 HP - Max. Head 20m - Max. Flow 400 l/min - 2" water pump
 Cm150A2 - 1.5 kW / 2 HP - Max. Head 22m - Max. Flow 500 l/min - 2" water pump

DIMENSIONS



TYPE	L1	W1	H1	L2	L3	W2	H2
1Cm15	265	140	176	36.5	82	98	69
1.5Cm16	280	159	195	40	92	110	71
1.5Cm18	280	159	195	40	92	110	71
Cm110A2	365	219	263	46	125	160	110
Cm150A2	365	219	263	46	125	160	110

CM/A SERIES EXPLODING DRAWINGG



Ser.No.	Part Name	Ser.No.	Part Name	Ser.No.	Part Name
1	Drain Plug	15	Splash guard	29	Screw
2	flat gasket	16	Shaft key	30	Screw
3	Drain Plug	17	Bearing	31	Screw
4	plastic cover	18	LOGO	32	Pressing block
5	Pump body	19	rotor	33	Cable Hocdey
6	Self-locking nut	20	Stator	34	Water-Proof plug
7	Impeller	21	Terminal box base	35	foot
8	Snap ring	22	Connection Poles	36	Spring Washer
9	Mechanical seal	23	brass gasket	37	End Motor Cover
10	O ring	24	brass nut	38	bolt
11	cover board	25	Screw	39	Fan
12	bolt	26	Screw	40	Fan Cover
13	Front Cover	27	Capacitor	41	Screw
14	bolt	28	Terminal box cover		