

## High Pressure Diesel Water Pump



### Model:HGM

YINJIA Pump is a professional surface clean water pump manufacturer in China since 1990, has specialized in manufacturing various of surface clean water pumps, as well as providing quality high pressure diesel water pumps for the world. We are committed to providing high quality product at a competitive price and backed up with superior service. Welcome to inquiry for high pressure diesel water pumps.

HGM series high pressure diesel water pumps, can match with the gasoline, diesel engine, or electric motor. The pump body, impeller and front cover in cast iron provides durability and reliability even in the toughest conditions. The low noise, low vibration portable diesel water pumps are easier than ever to maintain and are compact and simple to transport due to their optional wheel kit.

## Product Feature And Application

### • APPLICATIONS

-Widely used in agricultural irrigation, fishery, fire-fighting, flood-fighting and emergency recuses, construction site and tunnels etc.

### • OPERATING LIMITS

- Maximum operating pressure: 8 bar
- Maximum ambient temperature +40℃
- Liquid temperature up to +60℃
- Maximum altitude + 1000m

### • DESIGN FEATURES

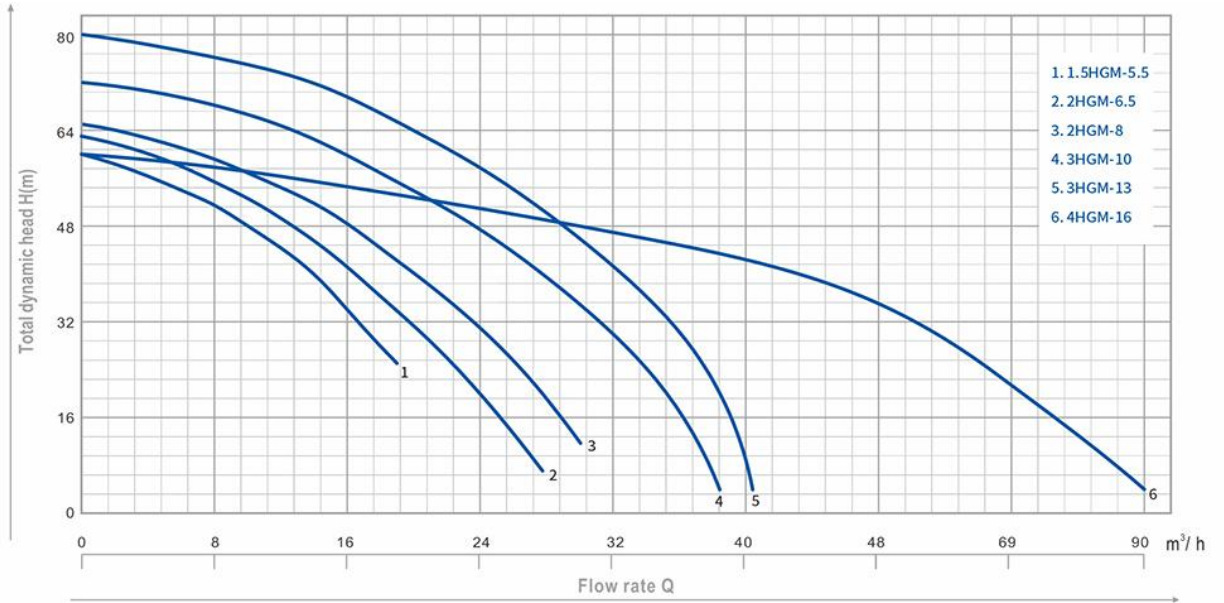
- Compact design with good balance between pump and engine, can match with the gasoline, diesel engine, or electric motor.
- High head pressure with big flow, easy to move with wheels and handles.
- Low fuel consumption, convenient maintenance, very durable and reliable

### • ENGINE TYPE:

- Recoil start, electric start
- Thread Shaft, keyway shaft

## Product Parameter (Specification)

### PERFORMANCE

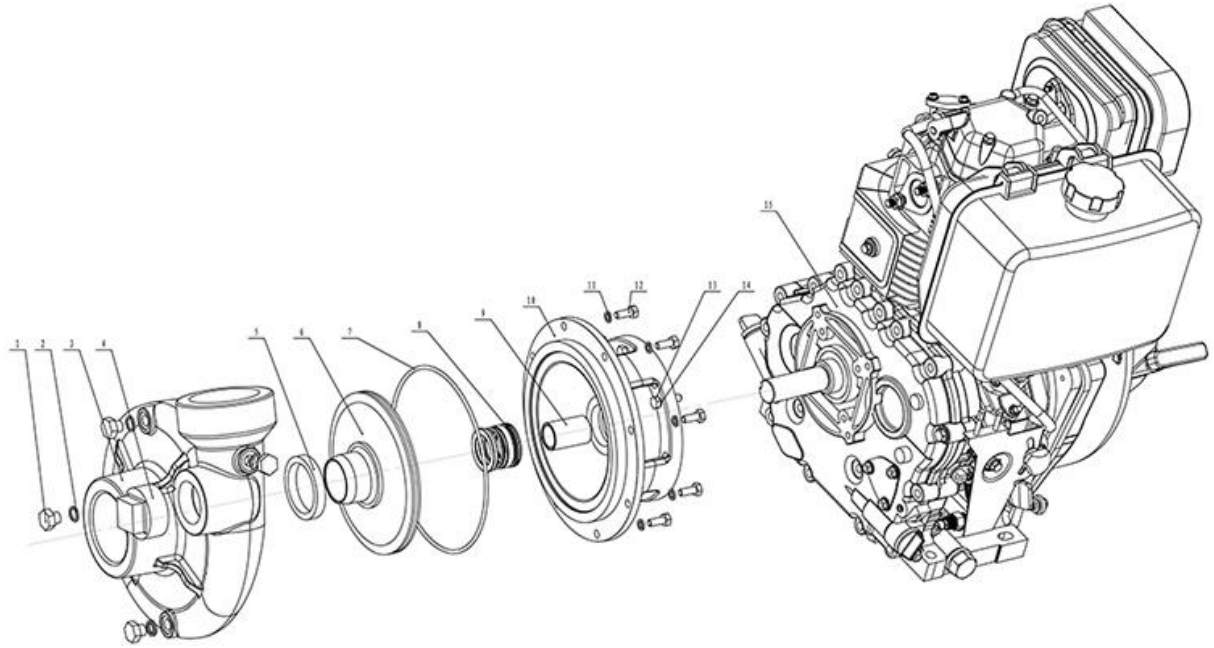


	1.5HGM-5.5	2HGM-6.5	2HGM-8	3HGM-10	3HGM-13	4HGM-16
Inlet/outlet	NPT1.5"/NPT1.5"	NPT2"/NPT2"	NPT2"/NPT2"	NPT3"/NPT3"	NPT3"/NPT3"	NPT4"/NPT4"
Max. Capacity(m <sup>3</sup> /h)	19	28	30	38.5	40.5	90
Rated Capacity(m <sup>3</sup> /h)	14	18	25	28	30	48
Max. Head(m)	60	63	65	72	80	60
Rated Head(m)	40	31	34	40	46	36
Suction Head(m)	8	8	8	8	8	8
Net weight(kg)	10.2	10.5	12	21.6	21.8	21
Dimensions(LxWxH)(mm)	475*475*495	515*500*585	575*535*635	575*535*635	580*500*610	580*500*610

**Coupled With Diesel Engine**

	C170F-2	C178F	C186F	C186F	C192F	C192F
Model	C170F-2	C178F	C186F	C186F	C192F	C192F
Rated output(kW/rpm)	3.6/3600	4.0/3600	6.3/3600	6.3/3600	8.6/3600	8.6/3600
Speed(rpm)	3600	3600	3600	3600	3600	3600
Fuel tank capacity(L)	2.5	3.5	5.5	5.5	5.5	5.5
Displacement(ml)	227	296	418	418	499	499

## HGM SERIES EXPLODING DRAWING



Seri No.	Part name	Seri No.	Part name
1	Drain plug	9	Brass shaft cover
2	Flat gasket	10	Front cover
3	Pump body	11	Spring gasket
4	Drain plug cover	12	Screw
5	Releasing shock cover	13	Screw
6	Impeller	14	Spring gasket
7	O ring	15	Engine
8	Mechanical seal		