



High Capacity Centrifugal Pump For Water System

Model:YS

YINJIA Pump is a professional surface clean water pump manufacturer in China since 1990, has specialized in manufacturing various of surface clean water pumps, as well as providing quality high capacity centrifugal pump for water system for the world. We are committed to providing high quality product at a competitive price and backed up with superior service.

Welcome to inquiry for high capacity centrifugal pump for water system

YINJIA is a leading China high capacity centrifugal pump for water system manufacturer, supplier and exporter. Adhering to the pursuit of perfect quality of products, so that our high capacity centrifugal pump for water system have been satisfied by many customers. YS series high capacity centrifugal pump for water system belongs to the electrical centrifugal pump category, is a classical and popular pump in the global market. Single phase and three phase are available. The Heavy duty electric water pump suitable to cover any small, medium or large capacity request, for domestic, agricultural and industrial purposes. Pumps should be installed in a covered area, protected against the weather.

Product Feature And Application

- **APPLICATIONS**
 - Suitable for use with clean water, or non-aggressive liquids only, without sand or other solid impurities.
 - Suitable for industrial use and urban water supply, pressure boosting for high buildings and fire fighting, garden irrigation, long-distance water transfer, heating ventilation and air conditioning, circulation and pressure boosting for cold hot water, and supporting equipment etc.
- **DESIGN FEATURES**
 - Pump body/motor bracket: cast iron
 - Impeller: cast iron
 - 100% copper winding
 - Built-in thermal protector for single phase motor
 - Motor shaft: AISI 304 welded shaft
 - Mechanical seal: Graphite/Ceramic/NBR/S.S304
- **SPECIAL FEATURES ON REQUEST**
 - Anti-rust treatment for casting
 - Brass impeller
 - AISI 1045 motor shaft
 - Carbon/SiC/V mechanical seal
 - Other voltage and frequency
 - Insulation class: F

OPERATING LIMITS

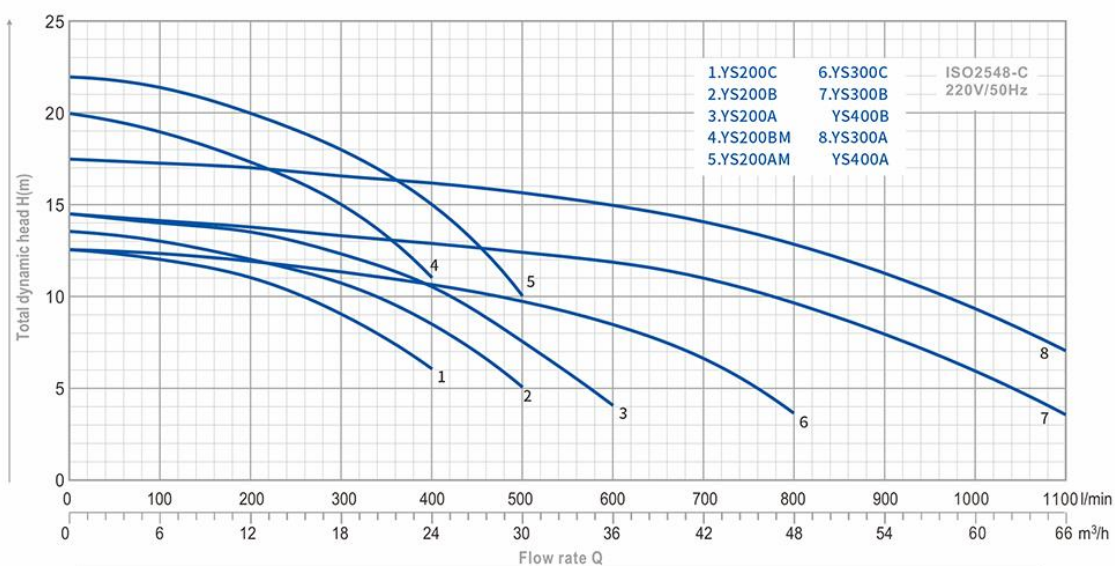
- Total suction lift up to 6-8 mt. with foot valve
- Max. operating pressure: 8 bar.
- Max. ambient temperature: +40 °C
- Max. liquid temperature: +90 °C
- Max. altitude: +1000 mt.

MOTOR

- Insulation class: B
- Protection: IP44
- Speed of rotation: 2850rpm
- Continuous duty: S1

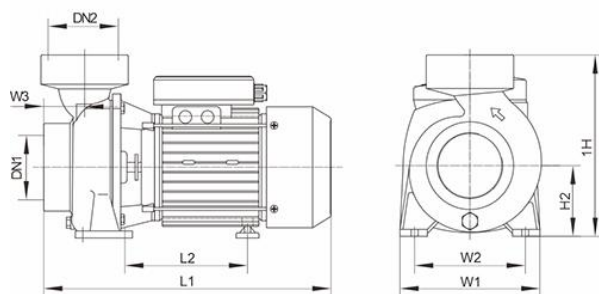
Product Parameter (Specification)

PERFORMANCE



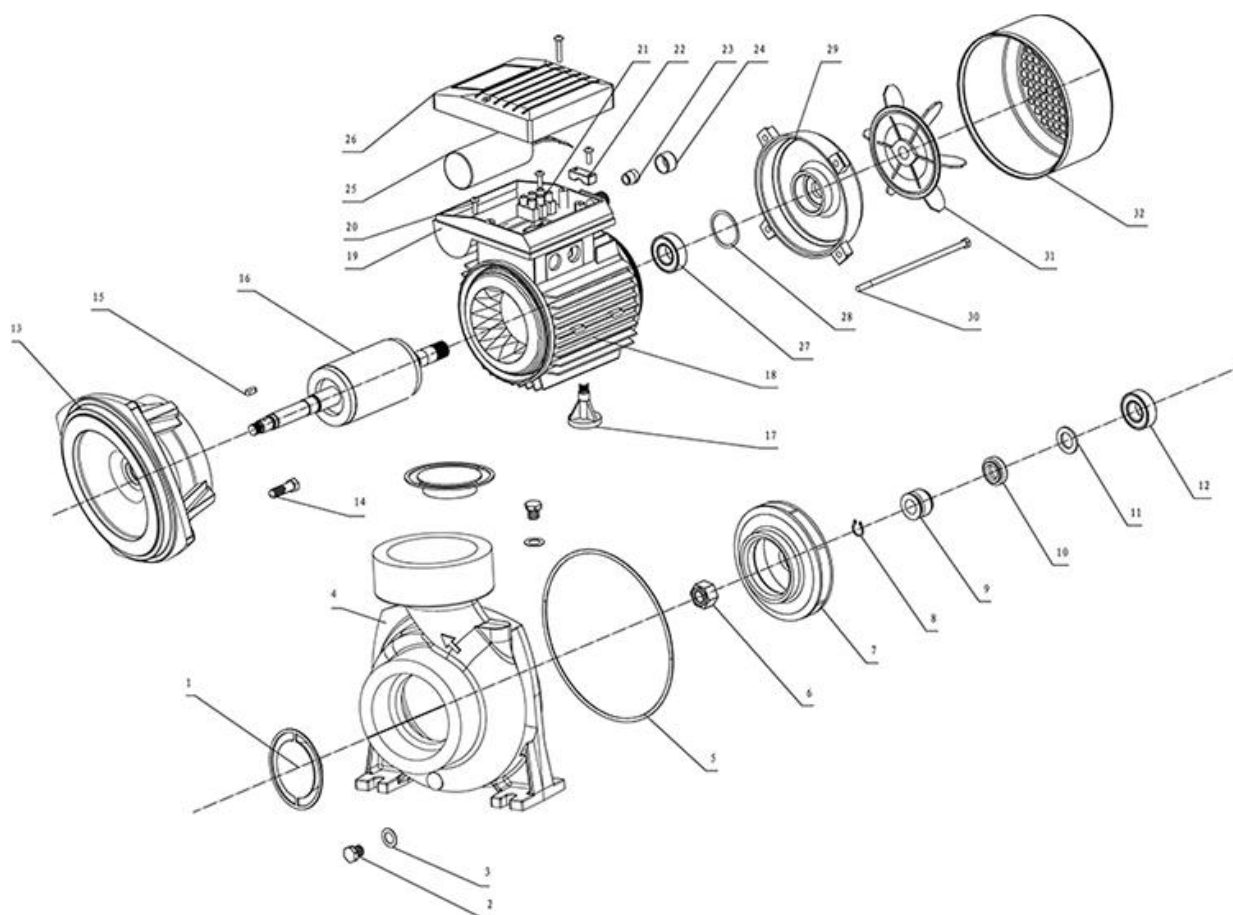
TYPE	Power		μF	Ampere I max.		Q l/min m³/h	0 100 200 300 400 500 600 700 800 900 10001100														DN1	DN2	N.W (kg)	PACKAGE DIMENSION (mm)		
	HP	kW		1~	3~		0	6	12	18	24	30	36	42	48	54	60	66	L	W				H		
	YS200C	0.75	0.55	16	3.5	-	12.5	12	11	9	6	-	-	-	-	-	-	-	2"	2"	15	365	220	260		
YS200B	1	0.75	20	5	-	13.5	13	12	10.5	8.5	5	-	-	-	-	-	-	2"	2"	16	365	220	260			
YS200A	1.5	1.1	30	6.5	-	14.5	14	13.5	12.3	10.5	7.5	4	-	-	-	-	-	2"	2"	21	380	225	255			
YS200BM	1.5	1.1	30	6.5	-	20	19	17.5	15	11	-	-	-	-	-	-	-	2"	2"	20.5	405	220	275			
YS200AM	2	1.5	35	8.5	-	22	21.5	20	18	15	10	-	-	-	-	-	-	2"	2"	21.5	405	220	275			
YS300C	2	1.5	35	8.5	-	12.5	12.3	12	11.5	11	10	8.5	6.5	3.5	-	-	-	3"	3"	33	450	280	355			
YS300B	3	2.2	60	10.5	-	14.5	14.5	14.5	14.2	14	13.5	13	12	10.5	9	6	4	3"	3"	37	465	295	360			
YS300A	4	3	-	-	6.5	17.5	17.5	17.5	17.2	16.5	16	15	14.5	13	11	9.5	6.5	3"	3"	38	465	295	360			
YS400B	3	2.2	60	10.5	-	14.5	14.5	14.5	14.2	14	13.5	13	12	10.5	9	6	4	4"	4"	38.5	465	295	360			
YS400A	4	3	-	-	6.5	17.5	17.5	17.5	17.2	16.5	16	15	14.5	13	11	9.5	6.5	4"	4"	40	465	295	360			

DIMENSIONS



TYPE	L1	L2	W1	W2	W3	H1	H2
YS200C	325	151	195	160	55	235	95
YS200B	325	151	195	160	55	235	95
YS200A	370	47	195	160	56	235	95
YS200BM	365	45	206	160	50	260	107
YS200AM	365	45	206	160	50	260	107
YS300C	400	153	240	190	71	240	121
YS300B	424	174	240	190	71	240	121
YS300A	424	174	240	190	71	240	121
YS400B	415	164	240	190	70	240	121
YS400A	415	164	240	190	70	240	121

YS SERIES EXPLODING DRAWING



Ser.No.	Part Name	Ser.No.	Part Name	Ser.No.	Part Name
1	plastic cover	12	Bearing	23	Cable Seal
2	Drain Plug	13	Front Cover	24	Cable Presser
3	flat gasket	14	Screw	25	Capacitor
4	Pump body	15	Shaft key	26	Terminal box Cover
5	O ring	16	rotor	27	Bearing
6	Self-locking Nut	17	Supporting Foot	28	Spring Washer
7	Impeller	18	Stator	29	End Motor Cover
8	Snap ring	19	Terminal box	30	Tie Bolt
9	Mechanical seal	20	Screw	31	Fan
10	Mechanical seal	21	Connection Poles	32	Fan Cover