

Electrical Peripheral Water Pump



Model:IDB

YINJIA Pump is a professional surface clean water pump manufacturer in China since 1990, has specialized in manufacturing various of surface clean water pumps, as well as providing quality electrical peripheral water pump for the world. We are committed to providing high quality product at a competitive price and backed up with superior service. Welcome to inquiry for electrical peripheral water pump.

IDB series electrical peripheral water pump belongs to the single-phase peripheral pump category, is a classical and popular pump in the global market. The small water pump with peripheral impeller are able to offer high pressure in relation to comparatively low powers and which have particularly steady operating curves. The pump is assembled with very resistant and durable materials which is able to guarantee a very high solidity and the almost total absence of wear over time. Pumps should be installed in a covered area, protected against the weather.

Product Feature And Application

- **APPLICATIONS**

- Suitable for use with clean water, or non-aggressive liquids only, without sand or other solid impurities.
- Suitable for small living water supply, automatic water sprinkler system, small air conditioner system or supporting equipment etc.

- **DESIGN FEATURES**

- Pump body/motor bracket: cast iron
- Impeller: Brass
- Bearing: C&U
- 100% copper winding
- Built-in thermal protector for single phase motor
- Motor shaft: AISI 304 welded shaft
- Mechanical seal: Graphite/Ceramic/NBR/S.S304

- **SPECIAL FEATURES ON REQUEST**

- Anti-rust treatment for casting
- No block system
- AISI 1045 motor shaft
- Carbon/SiC/V mechanical seal
- Other voltage and frequency
- Insulation class: F

- **OPERATING LIMITS**

- Total suction lift up to 6-8 mt. with foot valve
- Max. operating pressure: 8 bar.
- Max. ambient temperature: +40 °C

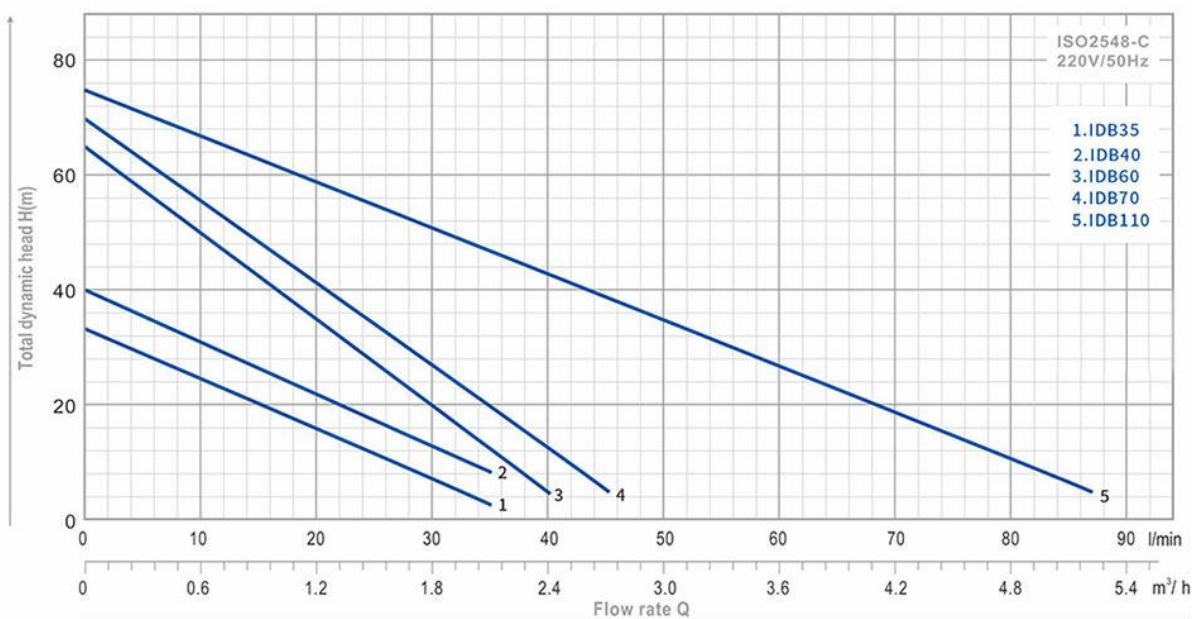
- Max. liquid temperature: +90 °C
- Max. altitude: +1000 mt.

• MOTOR

- Insulation class: B
- Protection: Ip44
- Speed of rotation: 2850rpm
- Continuous duty: S1

Product Parameter (Specification)

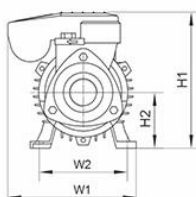
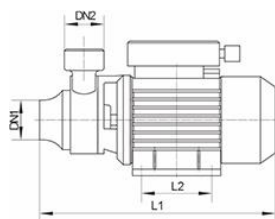
PERFORMANCE



TYPE	Power		μF	Ampere I max.	Q l/min m³/h	0	5	10	20	30	35	40	45	DN1	DN2	N.W (kg)	Package Dimension (mm)		
	HP	kW				0	0.3	0.6	1.2	1.8	2.1	2.4	2.7				L	W	H
IDB35	0.3	0.22	8	1.7	H (m)	33	29	25	16.5	7	3	-	-	1"	1"	5.8	275	160	165
IDB40	0.5	0.37	8	1.9		40	36	31.5	22	12	7	-	-	1"	1"	6.3	275	160	165
IDB60	0.75	0.55	16	3.7		65	58	50	35.5	20	13	5	-	1"	1"	8	305	175	200
IDB70	1	0.75	20	4.5		70	64	56	42	28	21	14	5	1"	1"	8.9	305	175	200

IDB35 - 0.22 kW / 0.3 HP - Max. Head 35m - Max. Flow 35 l/min - 1" water pump
 IDB40 - 0.37 kW / 0.5 HP - Max. Head 40m - Max. Flow 35 l/min - 1" water pump
 IDB60 - 0.55 kW / 0.75 HP - Max. Head 65m - Max. Flow 40 l/min - 1" water pump
 IDB70 - 0.75 kW / 1 HP - Max. Head 70m - Max. Flow 45 l/min - 1" water pump

DIMENSIONS

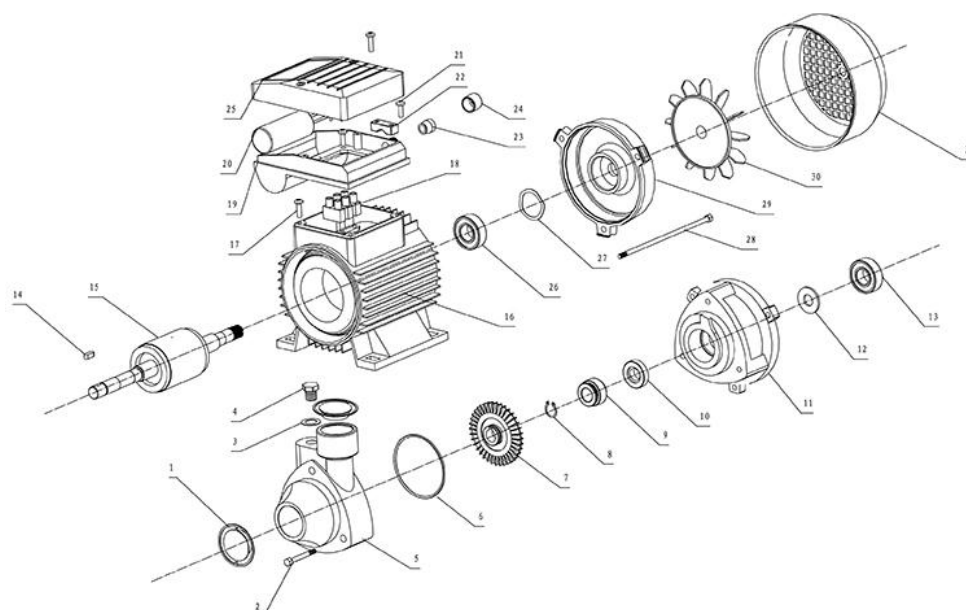


TYPE	L1	W1	H1	L2	W2	H2
IDB35	261	142	153	82	100	63
IDB40	261	142	153	81	100	63
IDB60	289	155	176	90	112	71
IDB70	289	155	176	90	112	71
IDB110	369	178	195	103	125	80

Fujian New Yinjia Pump Co.,Ltd.
 Tel: +86-593-6558888

E-mail: sales-sh@inija.com

IDB EXPLODING DRAWING



Ser.No.	Part Name	Ser.No.	Part Name	Ser.No.	Part Name
1	plastic cover	12	Splash guard	23	Cable Hocdey
2	Screw	13	Bearing	24	Water-Proof plug
3	flat gasket	14	Shaft key	25	Terminal box Cover
4	Drain Plug	15	rotor	26	Bearing
5	Pump body	16	Stator	27	Spring Washer
6	O ring	17	Screw	28	Screw
7	Impeller	18	Connection Poles	29	End Motor Cover
8	Snap ring	19	Terminal box	30	Fan
9	Mechanical seal	20	Capacitor	31	Fan Cover
10	Mechanical seal	21	Screw		
11	Front Cover	22	Pressing block		