

Electrical Peripheral Clean Water Pump



Model:QB

YINJIA Pump is a professional surface clean water pump manufacturer in China since 1990, has specialized in manufacturing various of surface clean water pumps, as well as providing quality electrical peripheral clean water pump for the world. We are committed to providing high quality product at a competitive price and backed up with superior service. Welcome to inquiry for electrical peripheral clean water pump.

QB series electrical peripheral clean water pump belongs to the single-phase peripheral pump category, is a classical and popular pump in the global market. The small water pump with peripheral impeller are able to offer high pressure in relation to comparatively low powers and which have particularly steady operating curves. The pump is assembled with very resistant and durable materials which is able to guarantee a very high solidity and the almost total absence of wear over time. Pumps should be installed in a covered area, protected against the weather.

Product Feature And Application

• APPLICATIONS

- Suitable for use with clean water, or non-aggressive liquids only, without sand or other solid impurities.
- Suitable for small living water supply, automatic water sprinkler system, small air conditioner system or supporting equipment etc.

• DESIGN FEATURES

- Pump body/motor bracket: cast iron
- Impeller: Brass
- 100% copper winding
- Built-in thermal protector for single phase motor
- Motor shaft: AISI 304 welded shaft
- Mechanical seal: Graphite/Ceramic/NBR/S.S304

• SPECIAL FEATURES ON REQUEST

- Anti-rust treatment for casting
- No block system
- AISI 1045 motor shaft
- Carbon/SiC/V mechanical seal
- Other voltage and frequency
- Insulation class: F

• OPERATING LIMITS

- Total suction lift up to 6-8 mt. with foot valve
- Max. operating pressure: 8 bar.
- Max. ambient temperature: +40 °C
- Max. liquid temperature: +90 °C
- Max. altitude: +1000 mt.

• MOTOR

- Insulation class: B

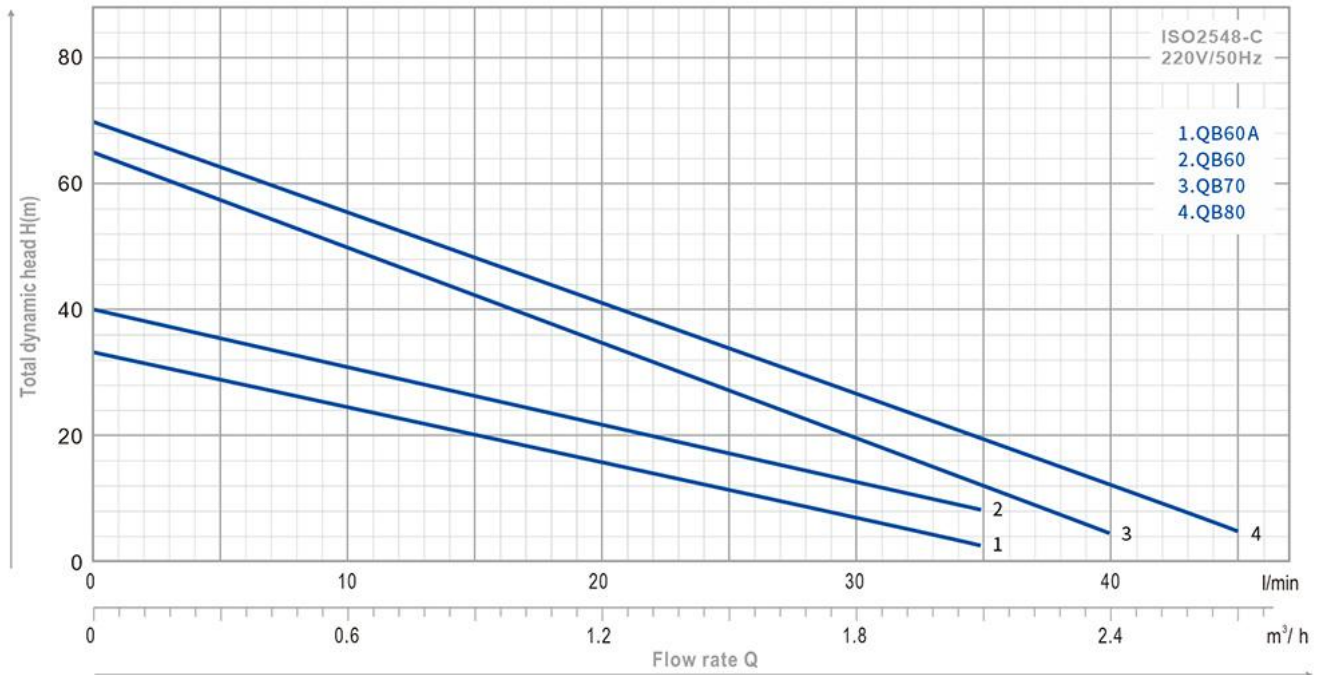
Fujian New Yinjia Pump Co.,Ltd.

Tel: [+86-593-6558888](tel:+86-593-6558888)

E-mail: sales-sh@inija.com

- Protection: Ip44
- Speed of rotation: 2850rpm
- Continuous duty: S1

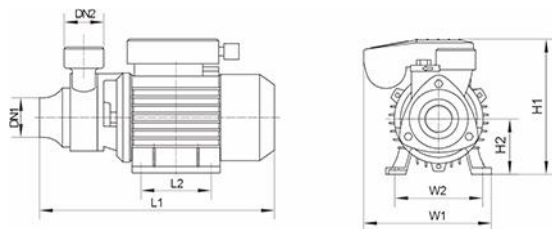
Product Parameter (Specification)



TYPE	Power		μF	Ampere I max.	Q l/min m³/h	Q								DN1	DN2	N.W (kg)	Package Dimension (mm)		
	HP	kW				0	5	10	20	30	35	40	45				L	W	H
QB60A	0.3	0.22	8	1.7	H (m)	33	29	25	16.5	7	3	-	-	1"	1"	5.1	278	138	172
QB60	0.5	0.37	8	1.9		40	36	31.5	22	12	7	-	-	1"	1"	5.1	278	138	172
QB70	0.75	0.55	16	3.7		65	58	50	35.5	20	13	5	-	1"	1"	8.5	315	155	200
QB80	1	0.75	20	4.5		70	64	56	42	28	21	14	5	1"	1"	10	315	155	200

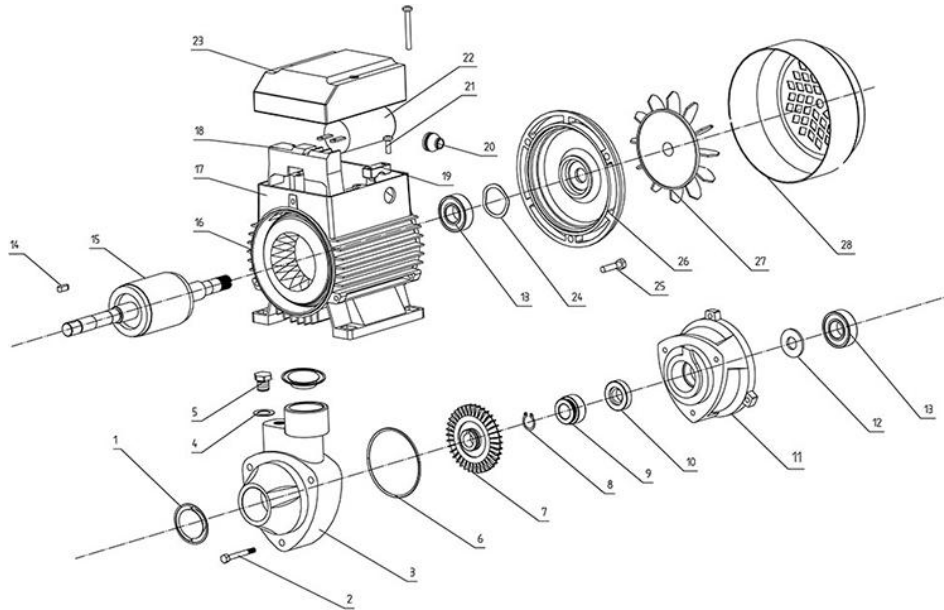
- QB60A - 0.22 kW / 0.3 HP - Max. Head 35m - Max. Flow 35 l/min - 1" water pump
- QB60 - 0.37 kW / 0.5 HP - Max. Head 40m - Max. Flow 35 l/min - 1" water pump
- QB70 - 0.55 kW / 0.75 HP - Max. Head 65m - Max. Flow 40 l/min - 1" water pump
- QB80 - 0.75 kW / 1 HP - Max. Head 70m - Max. Flow 45 l/min - 1" water pump

DIMENSIONS



TYPE	L1	W1	H1	L2	W2	H2
QB60A	265	118	142	80	151	63
QB60	265	118	142	80	151	63
QB70	305	134	155	90	181	71
QB80	305	134	155	90	181	71

IDB EXPLODING DRAWING



Ser.No.	Part Name	Ser.No.	Part Name	Ser.No.	Part Name
1	plastic cover	11	Front Cover	21	Screw
2	Screw	12	Splash guard	22	Capacitor
3	Pump body	13	Bearing	23	Terminal box Cover
4	flat gasket	14	Shaft key	24	Spring Washer
5	Drain Plug	15	Rotor	25	Screw
6	O ring	16	Stator	26	End Motor Cover
7	Impeller	17	Terminal box	27	Fan
8	Snap ring	18	Connection Poles	28	Fan Cover
9	Mechanical seal	19	Pressing block		
10	Mechanical seal	20	Cable Hocdey		