

Electrical Centrifugal Pumps



Model: CPM

YINJIA Pump is a professional surface clean water pump manufacturer in China since 1990, has specialized in manufacturing various of surface clean water pumps, as well as providing quality electrical centrifugal pumps for the world. We are committed to providing high quality product at a competitive price and backed up with superior service. Welcome to inquiry for electrical centrifugal pumps.

You can rest assured to buy customized electrical centrifugal pumps from YINJIA. We look forward to cooperating with you, if you want to know more, you can consult us now, we will reply to you in time! CPM series electrical centrifugal pump sbelongs to the single-phase centrifugal pump category, is a classical and popular pump in the global market. Single impeller centrifugal pumps suitable to cover any small, medium or large capacity request, for domestic, agricultural and industrial purposes. The Heavy duty electric water pump is assembled with very resistant and durable materials which is able to guarantee a very high solidity and the almost total absence of wear over time. Pumps should be installed in a covered area, protected against the weather.

Product Feature And Application

• APPLICATIONS

- Suitable for use with clean water, or non-aggressive liquids only, without sand or other solid impurities.
- Suitable for industrial use and urban water supply, pressure boosting for high buildings and fire fighting, garden irrigation, long-distance water transfer, heating ventilation and air conditioning, circulation and pressure boosting for cold hot water, and supporting equipment etc.

• DESIGN FEATURES

- Pump body/motor bracket: cast iron
- Impeller: Brass
- Bearing: C&U
- 100% copper winding
- Built-in thermal protector for single phase motor
- Motor shaft: AISI 304 welded shaft
- Mechanical seal: Graphite/Ceramic/NBR/S.S304

• SPECIAL FEATURES ON REQUEST

- Anti-rust treatment for casting
- PPO/SUS304 impeller
- AISI 1045 motor shaft
- Carbon/SiC/V mechanical seal
- Other voltage and frequency
- Insulation class: F

• OPERATING LIMITS

- Total suction lift up to 6-8 mt. with foot valve
- Max. operating pressure: 8 bar.

Fujian New Yinjia Pump Co., Ltd.

Tel: [+86-593-6558888](tel:+86-593-6558888)

E-mail: sales-sh@inija.com

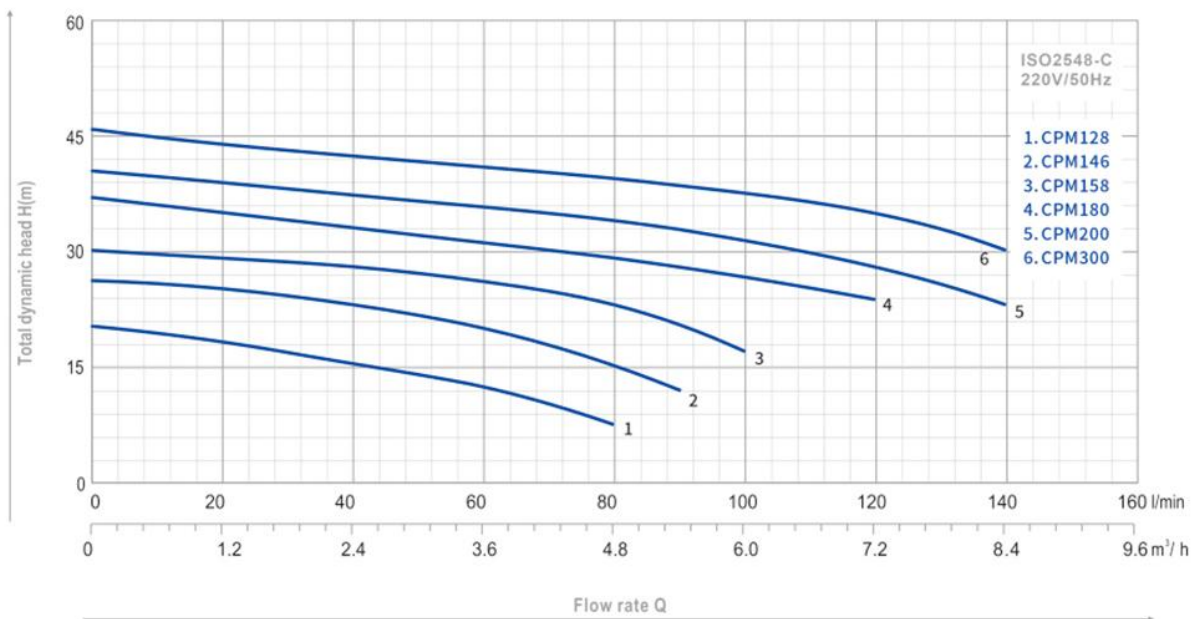
- Max. ambient temperature: +40 °C
- Max. liquid temperature: +90 °C
- Max. altitude: +1000 mt.

- MOTOR**

- Insulation class: B
- Protection: IP44
- Speed of rotation: 2850rpm
- Continuous duty: S1

Product Parameter (Specification)

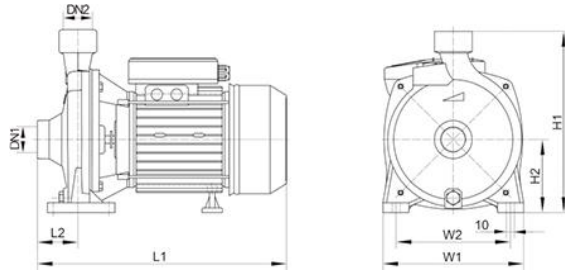
PERFORMANCE CHART



TYPE	Power		μF	Ampere I max.	Q l/min m³/h	0	20	40	60	80	90	100	120	140	DN1	DN2	N.W (kg)	Package Dimension (mm)		
	HP	kW				0	1.2	2.4	3.6	4.8	5.4	6.0	7.2	8.4				L	W	H
CPM128	0.5	0.37	12	2.1	H (m)	20	18	15	12	7	-	-	-	-	1"	1"	9	290	185	240
CPM146	0.75	0.55	16	4.0		26	25	23	20	15	12	-	-	-	1"	1"	11.8	310	195	250
CPM158	1	0.75	20	5.0		30	29	27.5	26	23	21	17	-	-	1"	1"	13	320	220	270
CPM180	1.5	1.1	30	7.0		37	35	33	31	29	28	26.5	24	-	1"	1"	21	365	235	300
CPM200	2	1.5	30	8.2		40.5	39	37	35.5	34	33	31	28	22.8	1"	1"	25.5	365	255	330
CPM300	3	2.2	45	10.5		46	43.5	42	41	39	38	37.5	35	30	1"	1"	26.5	365	255	330

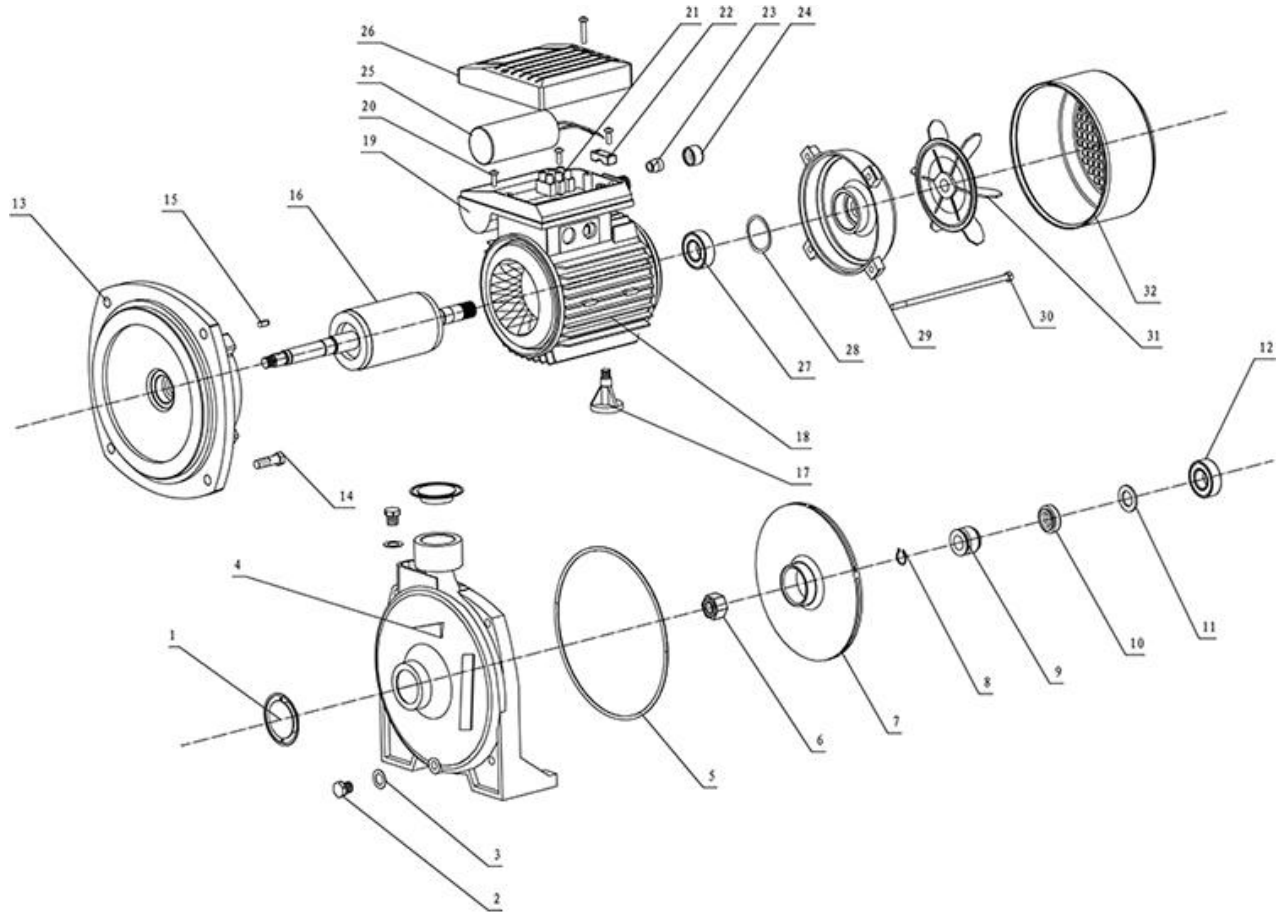
- CPM128 - 0.37 kW / 0.5 HP - Max. Head 20m - Max. Flow 80 l/min - 1" water pump
- CPM146 - 0.55 kW / 0.75 HP - Max. Head 26m - Max. Flow 90 l/min - 1" water pump
- CPM158 - 0.75 kW / 1 HP - Max. Head 30m - Max. Flow 100 l/min - 1" water pump
- CPM200 - 1.2 kW / 2 HP - Max. Head 40.5m - Max. Flow 140 l/min - 1" water pump
- CPM300 - 2.2 kW / 3 HP - Max. Head 46m - Max. Flow 140 l/min - 1" water pump

DIMENSIONS



TYPE	L1	L2	W1	W2	H1	H2
CPM128	270	44.5	170	135	220	88
CPM146	294	47.5	175	142	225	90
CPM158	303	42.5	190	167	243	98
CPM180	358	55	215	180	276	110
CPM200	358	55	230	200	300	120
CPM300	358	55	230	200	300	120

CPM SERIES EXPLODING DRAWING



Ser.No.	Part Name	Ser.No.	Part Name	Ser.No.	Part Name
1	plastic cover	12	Bearing	23	Cable Hocdey
2	Drain Plug	13	Front Cover	24	Water-Proof plug
3	flat gasket	14	Screw	25	Capacitor
4	pump body	15	Shaft key	26	Terminal box Cover
5	O ring	16	rotor	27	Bearing
6	Self-locking Nut	17	supporting foot	28	Spring Washer
7	Impeller	18	Stator	29	End Motor Cover
8	Snap ring	19	Terminal box	30	Tie bolt
9	Mechanical seal	20	Screw	31	Fan
10	Mechanical seal	21	Connection Poles	32	Fan Cover
11	Splash guard	22	Pressing block		