



Domestic Water Pressure Booster Pumps

Model:APm

YINJIA Pump is a professional surface clean water pump manufacturer in China since 1990, has specialized in manufacturing various of surface clean water pumps, as well as providing quality domestic water pressure booster pumps for the world. We are committed to providing high quality product at a competitive price and backed up with superior service. Welcome to inquiry for

domestic water pressure booster pumps.

Yinjia pump is domestic water pressure booster pumps manufacturers and suppliers in China who can wholesale high-quality products with competitive price. APm series domestic water pressure booster pumps belongs to the single-phase automatic self-priming peripheral pump category, is a best seller pump in the global market. It is a patented type of high efficient, energy saving and low noise running household pumps, widely used in domestic household, shallow well, garden irrigation, water supply and hot water circulation. The pump assembled with pressure switch and pressure tank, lead the domestic water pressure booster pumps works automatic.

Product Feature And Application

- **APPLICATIONS**
 - Suitable for use with clean water, or non-aggressive liquids only, without sand or other solid impurities.
 - Suitable for domestic household, shallow well, garden irrigation, water supply and hot water circulation.
- **DESIGN FEATURES**
 - Pump body/motor bracket: cast iron
 - Impeller: Brass
 - 100% copper winding
 - Built-in thermal protector for single phase motor
 - Motor shaft: AISI 304 welded shaft
 - Mechanical seal: Graphite/Ceramic/NBR/S.S304
- **SPECIAL FEATURES ON REQUEST**
 - Anti-rust treatment for casting
 - No block system
 - AISI 1045 motor shaft
 - Carbon/SiC/V mechanical seal
 - Other voltage and frequency
 - Insulation class: F
- **OPERATING LIMITS**
 - Total suction lift up to 6-8 mt. with foot valve
 - Max. operating pressure: 8 bar.
 - Max. ambient temperature: +40 °C

- Max. liquid temperature: +90 °C
- Max. altitude: +1000 mt.

- **MOTOR**

- Insulation class: B
- Protection: IP44
- Speed of rotation: 2850rpm
- Continuous duty: S1

Product Details



A. Pressure Switch

-Set the pressure in the appropriate range, pump only Can be used within the range of pressure

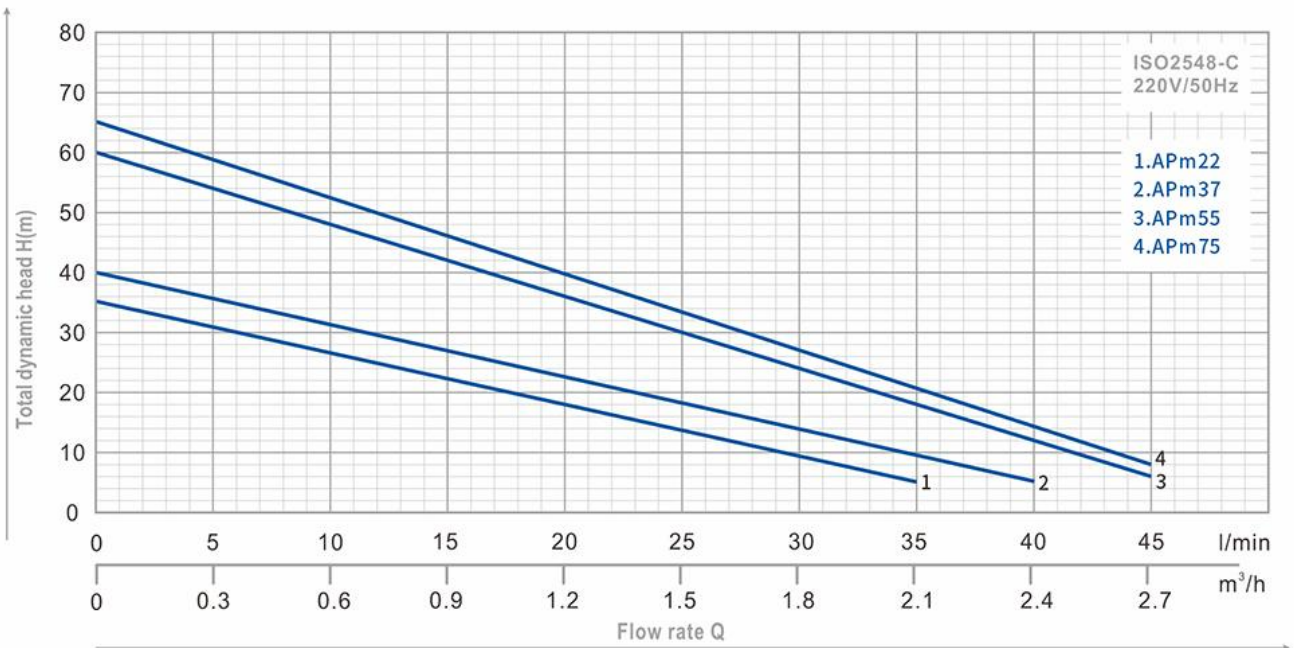


B. Tank

-The pressure tank is one of the main components of a well system, along with the pump, pressure switch and the well itself. It stores water from the well and supplies it to your home at an appropriate pressure.

Product Parameter (Specification)

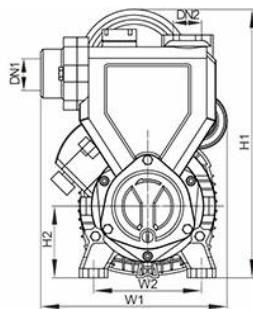
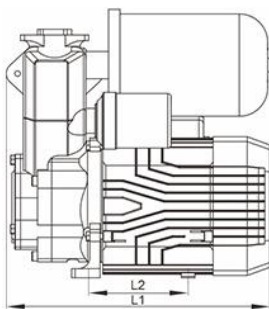
PERFORMANCE



TYPE	Power		μF	Ampere I max.	Q l/min m³/h	0	5	10	20	30	35	40	45	Pressure Tank	DN1	DN2	N.W (kg)	PACKAGE DIMENSION (mm)		
	HP	kW																L	W	H
APm22	0.3	0.22	8	1.9	H (m)	35	29	26	18	10	5	-	-	1L	1"	1"	7	275	195	275
APm37	0.5	0.37	12	2.8		40	35	30	25	20	15	5	-	1L	1"	1"	7.5	275	195	275
APm55	0.75	0.55	16	3.7		60	52	48	32	23	16	10	6	2L	1"	1"	10.8	305	215	315
APm75	1.0	0.75	20	4.5		65	58	50.5	36	25	18	12	8	2L	1"	1"	12	305	215	315

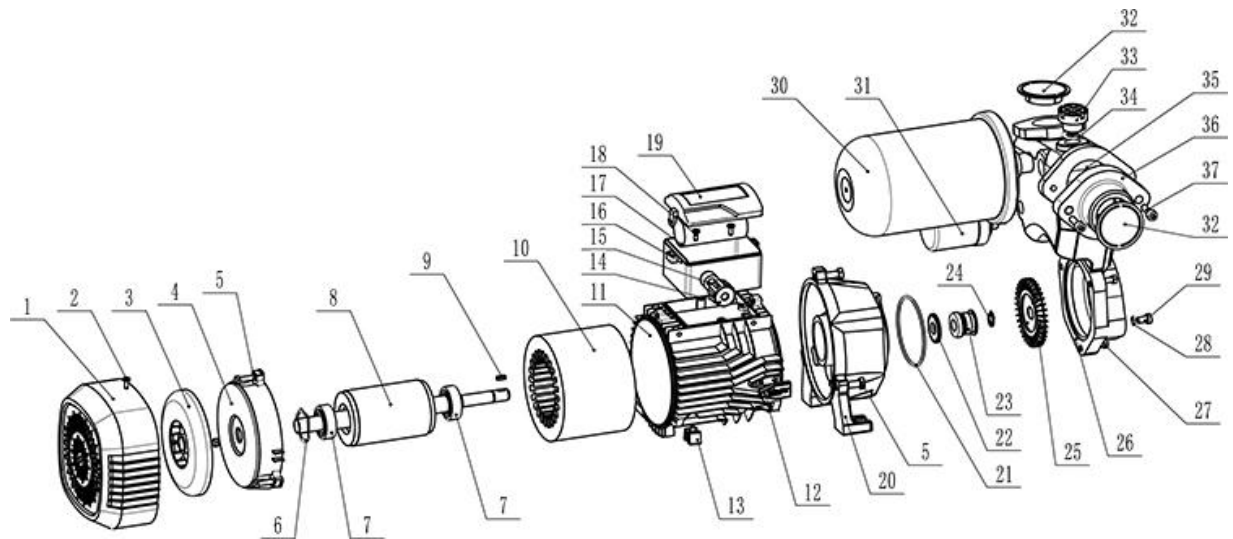
APm22 - 0.22 kW / 0.3 HP - Max. Head 35m - Max. Flow 35 l/min - 1" water pump
 APm37 - 0.37 kW / 0.5 HP - Max. Head 40m - Max. Flow 40 l/min - 1" water pump
 APm55 - 0.55 kW / 0.75 HP - Max. Head 60m - Max. Flow 45 l/min - 1" water pump
 APm75 - 0.75 kW / 1 HP - Max. Head 65m - Max. Flow 45 l/min - 1" water pump

DIMENSIONS



TYPE	L1	W1	H1	L2	W2	H2
APm22	232	160	237	86	99	63
APm37	232	160	237	86	99	63
APm55	258	198	278	103	105	71
APm75	258	198	278	103	105	71

APM EXPLODING DRAWING



Ser.No.	Part Name	Ser.No.	Part Name	Ser.No.	Part Name	Ser.No.	Part Name
1	plastic cover	11	motor housing	21	o ring	31	pressure switch
2	Screw	12	logo	22	splash guard	32	plastic cover
3	fan	13	foot	23	mechanical seal	33	brass plug
4	back cover	14	cable hood	24	washer	34	o ring
5	bolt	15	Rubber Washer	25	brass impeller	35	check valve
6	spring washer	16	terminal box seat	26	pump body	36	flange
7	bearing	17	capacitor	27	bolt	37	bolt
8	rotor	18	screw	28	o ring		
9	shaft key	19	terminal box cover	29	screw		
10	stator	20	front cover	30	tank		