



Domestic Automatic Pressure Booster Pumps

Model:SPm

YINJIA Pump is a professional surface clean water pump manufacturer in China since 1990, has specialized in manufacturing various of surface clean water pumps, as well as providing quality domestic automatic pressure booster pumps for the world. We are committed to providing high quality product at a competitive price and backed up with superior service.

Welcome to inquiry for domestic automatic pressure booster pumps

SPm series domestic automatic pressure booster pumps belongs to the single-phase automatic self-priming peripheral pump category, is a best seller pump in the global market. It is a patented type of high efficient, energy saving and low noise running household intelligent pumps, widely used in domestic household, shallow well, garden irrigation, water supply and hot water circulation. The pump assembled with flow sensor, pressure switch, PC board and pressure tank, lead the auto shut off booster pump works intelligent.

Product Feature And Application

- **APPLICATIONS**
 - Suitable for use with clean water, or non-aggressive liquids only, without sand or other solid impurities.
 - Suitable for domestic household, shallow well, garden irrigation, water supply and hot water circulation equipment etc.
- **DESIGN FEATURES**
 - Pump body/motor bracket: cast iron
 - Impeller: Brass
 - Cast iron flange for 0.22kW-0.75kW, Galvanized flange for 1.1kW-1.5kW
 - 100% copper winding
 - Built-in thermal protector for single phase motor
 - Motor shaft: AISI 304 welded shaft
 - Mechanical seal: Graphite/Ceramic/NBR/S. S304
- **SPECIAL FEATURES ON REQUEST**
 - Anti-rust treatment for casting
 - No block system
 - AISI 1045 motor shaft
 - Carbon/SiC/V mechanical seal
 - Other voltage and frequency
 - Insulation class: F
- **OPERATING LIMITS**
 - Total suction lift up to 6-8 mt. with foot valve
 - Max. operating pressure: 8 bar
 - Max. ambient temperature: +40 °C

Fujian New Yinjia Pump Co.,Ltd.

Tel: [+86-593-6558888](tel:+86-593-6558888)

E-mail: sales-sh@inija.com

- Max. liquid temperature: +90 °C
- Max. altitude: +1000 mt.

- **MOTOR**

- Insulation class: B
- Protection: IP44
- Speed of rotation: 2850rpm
- Continuous duty: S1

Product Details



A.Flow Sensor

- 3-second time delay of pump start after plugging into the socket to avoid potential danger caused by electric sparks
- Automatic switching to small flow control system in condition of small water flow
- Automatic stop in 6 minutes in case of no water inside
- Automatic 10-second operation every 72 hours for anti-block protection in case of no use for long time



B.Pressure Switch

- After set the pressure in the appropriate range,even the pressure reach the settled pressure, the Pump wouldn't stop, unless open the tap.



C.PC Board

-According the feedback from flow sensor pressure Switch to control start, stop and dry-running protection Etc.

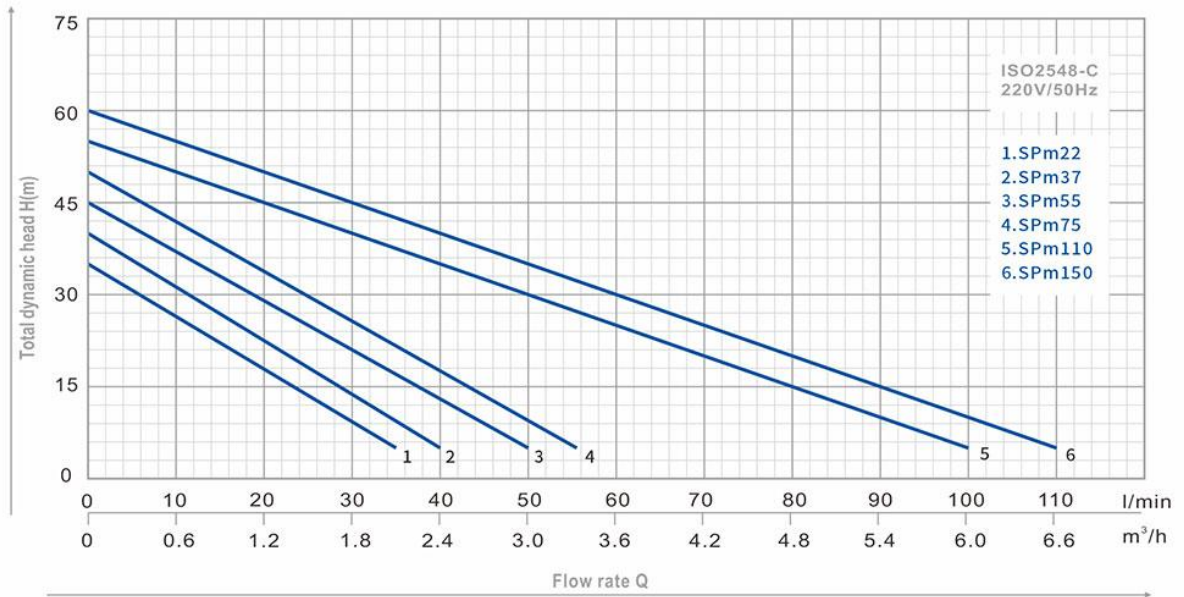


D.Tank

-The pressure tank is one of the main components of a well system, along with the pump, pressure switch and the well itself. It stores water from the well and supplies it to your home at an appropriate pressure.

Product Parameter (Specification)

PERFORMANCE

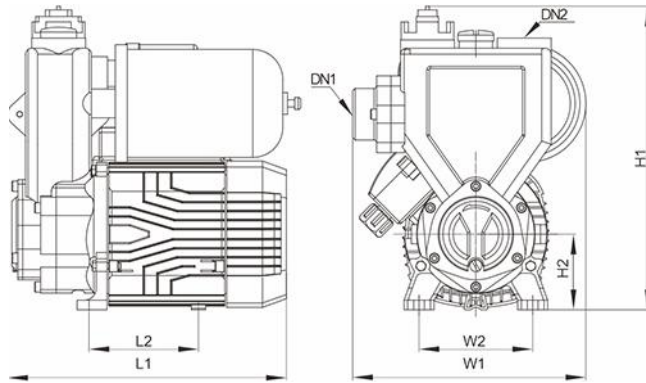


TYPE	Power		μF	Ampere I max.	Q l/min m³/h	0	10	20	30	35	40	50	55	Pressure Tank	Recommended Usage	N.W (kg)	Package Dimension (mm)			
	HP	kW															L	W	H	
SPm22	0.3	0.22	8	1.9	H (m)	35	26	18	10	5	-	-	-	1L	4 floor	1-2 tap	7.5	275	220	290
SPm37	0.5	0.37	12	2.8		40	30	25	20	15	5	-	-	1L	6 floor	1-2 tap	8	275	220	290
SPm55	0.75	0.55	16	3.7		45	37	30	21	17	13	5	-	2L	8 floor	1-2 tap	11.3	296	240	307
SPm75	1	0.75	20	4.5		50	42	34	26	22	17	10	6	2L	10 floor	1-2 tap	12.5	296	240	307

TYPE	Power		μF	Ampere I max.	Q l/min m³/h	0	20	40	60	80	100	110	120	Pressure Tank	Recommended Usage	N.W (kg)	Package Dimension (mm)			
	HP	kW															L	W	H	
SPm110	1.5	1.1	30	8	H (m)	55	49	36	25.5	15	5	-	-	2L	11 floor	1-2 tap	20.4	375	265	355
SPm150	2	1.5	35	9		60	55	42	30	20	10	5	-	2L	12 floor	1-2 tap	21.5	375	265	355

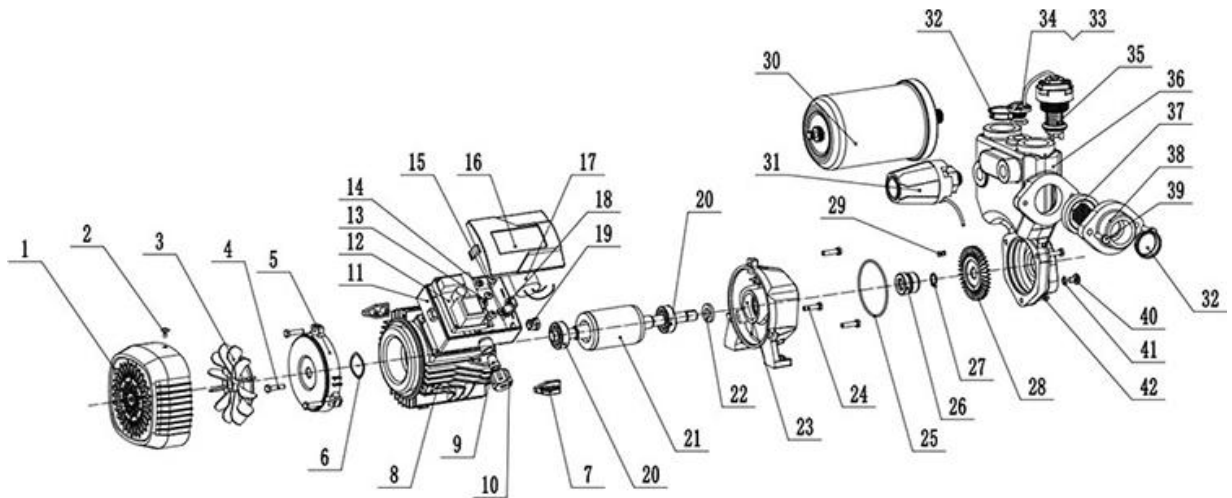
SPm22 - 0.22 kW / 0.3 HP - Max. Head 35m - Max. Flow 35 l/min - 1" water pump
 SPm37 - 0.37 kW / 0.5 HP - Max. Head 40m - Max. Flow 40 l/min - 1" water pump
 SPm55 - 0.55 kW / 0.75 HP - Max. Head 45m - Max. Flow 50 l/min - 1" water pump
 SPm75 - 0.75 kW / 1 HP - Max. Head 50m - Max. Flow 55 l/min - 1" water pump
 SPm110 - 1.1 kW / 1.5 HP - Max. Head 55m - Max. Flow 100 l/min - 1.5" water pump
 SPm150 - 1.5 kW / 2 HP - Max. Head 60m - Max. Flow 110 l/min - 1.5" water pump

DIMENSIONS



TYPE	L1	W1	H1	L2	W2	H2	DN1	DN2
SPm22	233	190	226	86	96	63	1"	1"
SPm37	233	190	226	86	96	63	1"	1"
SPm55	289	210	274	110	112	76	1"	1"
SPm75	289	210	274	110	112	76	1"	1"
SPm110	315	237	325	110	135	85	1.5"	1.5"
SPm150	315	237	325	110	135	85	1.5"	1.5"

SPM Exploding Drawing



Ser.No.	Part Name	Ser.No.	Part Name	Ser.No.	Part Name
1	Fan Cover	15	Cable clip	29	Shaft key
2	Screw	16	Terminal box cover	30	Pressure tank
3	Fan	17	Capacitor	31	Pressure switch
4	Screw	18	Screw	32	Plastic cover
5	End Cover	19	Cable clip	33	Drain plug
6	Spring washer	20	Bearing	34	O ring
7	LOGO block	21	Rotor	35	Flow rate gauge
8	Stator	22	Splash guard	36	Pump body
9	Pressing ring	23	Front cover	37	Rubber washer
10	Cable gland	24	Screw	38	Flange
11	Terminal box base	25	O ring	39	Screw
12	Electrical board	26	MEchanical seal	40	Drain plug
13	Screw	27	Retaining ring	41	O ring
14	Screw	28	Impeller	42	Screw