

## Deep Well JET Pump



### Model:DP/A

YINJIA Pump is a professional surface clean water pump manufacturer in China since 1990, has specialized in manufacturing various of surface clean water pumps, as well as providing quality deep well JET pump for the world. We are committed to providing high quality product at a competitive price and backed up with superior service. Welcome to inquiry for deep well JET pump.

You are welcomed to come to YINJIA factory to buy the latest selling, low price, and high-quality deep well JET pump. We look forward to cooperating with you. The deep well JET pump are regarded as one of the best pumps for deep well. In fact they consist of two pumps connected in series, one is ejector-pump and the other is centrifugal pump. The ejector pump is lowered in well and connected to the centrifugal pump body by two pipes. The most remarkable character is that they can be used to supply clean water from extremely deep well. To ensure adequate counter-pressure, it is always installed with a foot valve and a filter on the suction opening. These pumps are popular in Indonesia, Thailand, Vietnam and other South-east Asia countries.

## Product Feature And Application

### APPLICATIONS

- Selfpriming water pumps for deep suction up to 25m to be used in case of important water level gaps.
- Suitable to drain water from wells and in domestic fittings by small and medium sized tanks.
- Before installing the pump verify that all pipes (iron, plastic or rubber) are clean inside so to avoid any obstruction to the ejector nozzle. At the foot of the ejector must be installed a foot valve or a check valve. Installed the pump, fill completely both pipes and pump body with clean water. To preserve an efficient priming it is necessary a certain pressure in the circuit, therefore it is recommended to install a membrane tank at the delivery of the pump.

### DESIGN FEATURES

- Pump body/motor bracket: cast iron
- Impeller: Brass
- Ejection union: PPO
- 100% copper winding
- Built-in thermal protector for single phase motor
- Motor shaft: AISI 304 welded shaft
- Mechanical seal: Graphite/Ceramic/NBR/S.S304

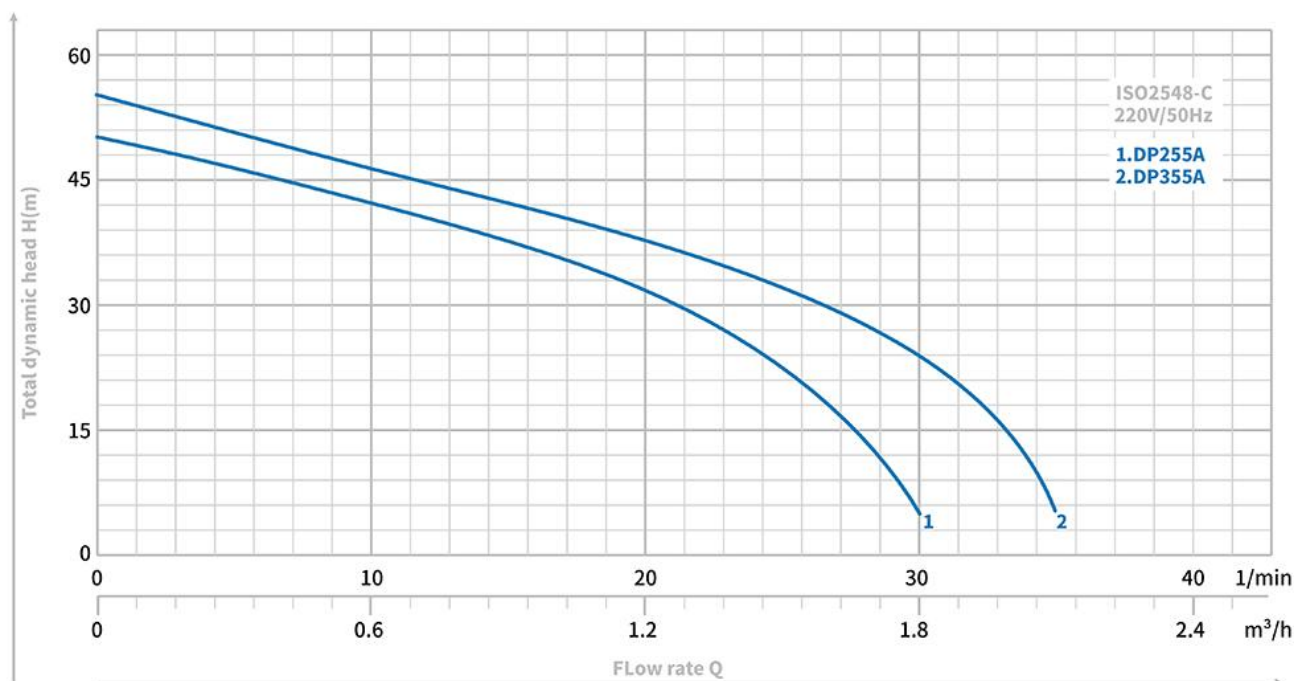
### SPECIAL FEATURES ON REQUEST

- Anti-rust treatment for casting
- AISI 1045 motor shaft
- Carbon/SiC/V mechanical seal
- Other voltage and frequency
- Insulation class: F

- OPERATING LIMITS**
  - Max. operating pressure: 8 bar.
  - Max. ambient temperature: +40 °C
  - Max. liquid temperature: +60 °C
  - Max. altitude: +1000 mt.
- MOTOR**
  - Insulation class: B
  - Protection: IP44
  - Speed of rotation: 2850rpm
  - Continuous duty: S1

## Product Parameter (Specification)

### PERFORMANCE

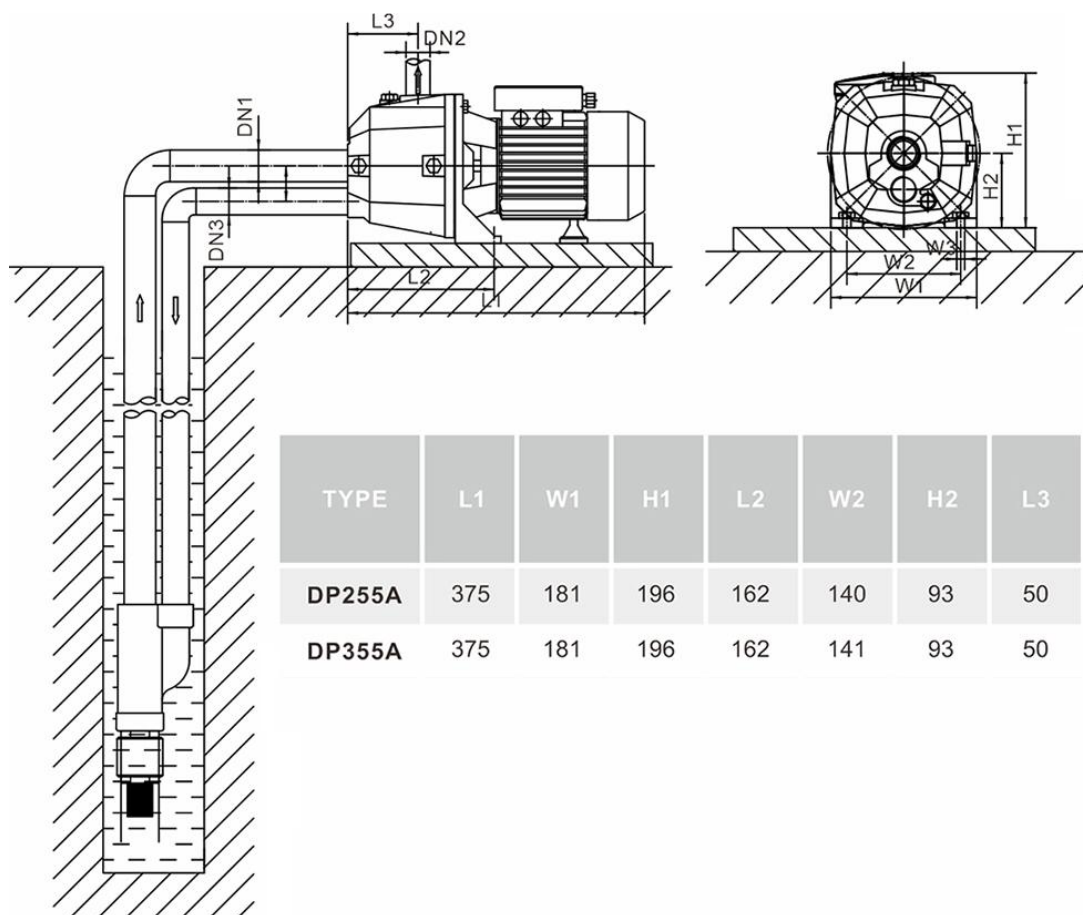


TYPE	Power		μF	Ampere I max.	Q l/min m³/h	0	10	20	30	35	DN1	DN2	DN3	N.W (kg)	Package Dimension (mm)		
	HP	kW				0	0.6	1.2	1.8	2.1					L	W	H
DP255A	0.75	0.55	16	3.5	H (m)	50	42	32	5	-	1.25"	1"	1"	16.5	450	210	220
DP355A	1	0.75	20	4.0		55	46	37.5	24	5	1.25"	1"	1"	17.6	450	210	212

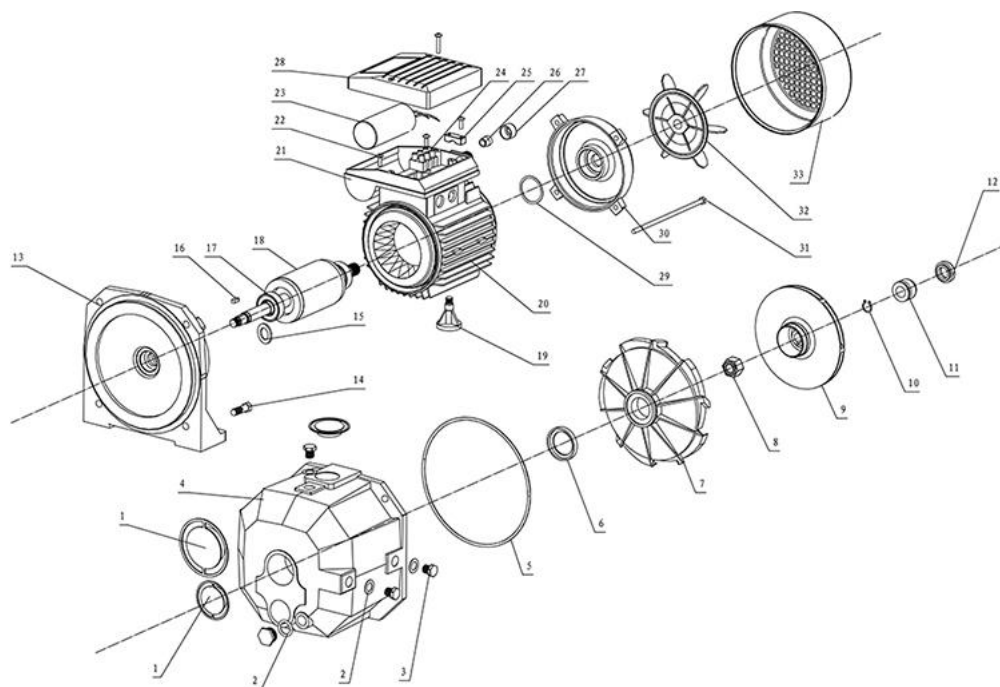
DP255A - 0.55 kW / 0.75 HP - Max. Head 50m - Max. Flow 30 l/min - 1" water pump

DP355A - 0.75 kW / 1 HP - Max. Head 55m - Max. Flow 35 l/min - 1" water pump

### DIMENSIONS



### DP SERIES EXPLODING DRAWING



Ser.No.	Part Name	Ser.No.	Part Name	Ser.No.	Part Name
1	plastic cover	12	Mechanical seal	23	Connection Poles
2	Flat gasket	13	Front Cover	24	Pressing block
3	Drain Plug	14	Screw	25	Cable Hocdey
4	Pump body	15	Splash guard	26	Water-Proof plug
5	O ring	16	Shaft key	27	Capacitor
6	Rubber washer	17	Bearing	28	Terminal box Cover
7	Diffuser	18	Rotor	29	Spring Washer
8	Self-locking nut	19	Supporting Foot	30	End Motor Cover
9	Impeller	20	Stator	31	Tie Bolt
10	Snap ring	21	Terminal box	32	Fan
11	Mechanical seal	22	Screw	33	Fan Cover