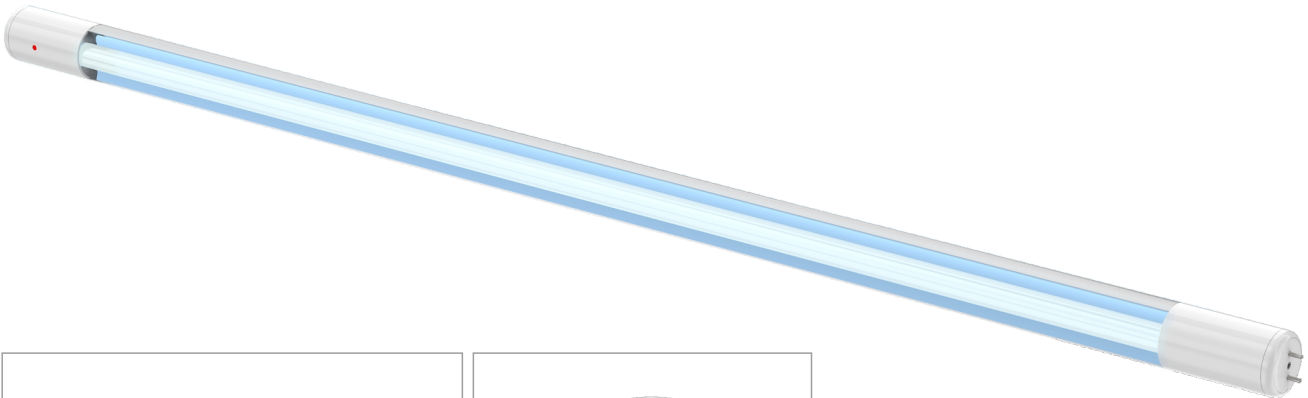




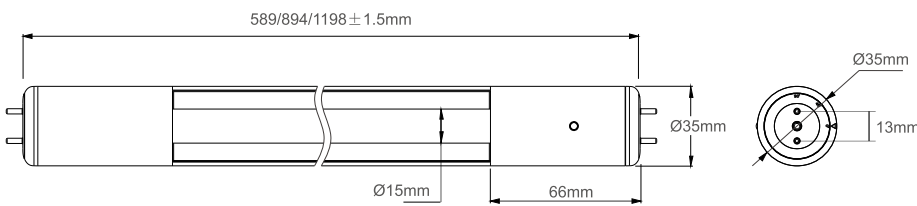
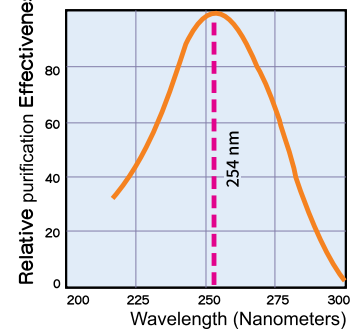
U18-01/02

SELF-BALLAST UVC TUBE LIGHT

20W / 30W / 40W



purification Effectiveness as Related to Wavelength



Specifications

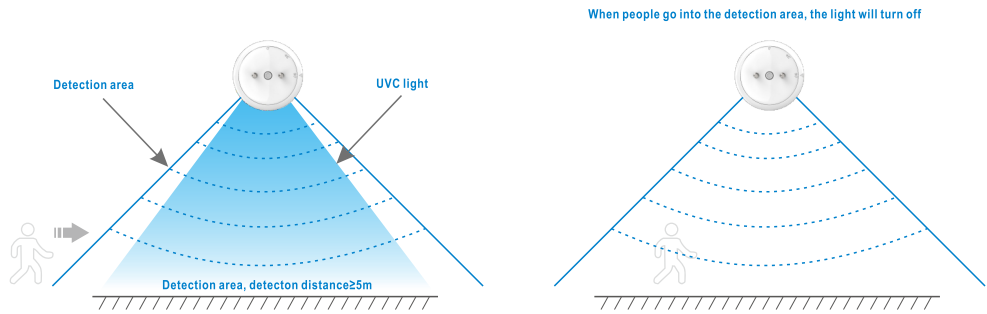
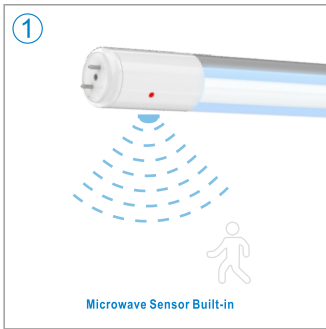
Model No.	Voltage	Lamps (Watts)	Wave Length	Radiation Intensity (1000mm from the tube surface)	UV maintenance	Operating Current	Operating Temp	Diameter (mm)	Length (mm)	Lamps Base	Rated Lamp Life (Hours)
U18-20W-01	100-120V 50/60Hz	20W	254nm	≥110μw/cm ²	≥75%	360mA	0°C~35°C	35	589	G13	6,000
U18-20W-02	220-240V 50/60Hz										
U18-30W-01	100-120V 50/60Hz	30W	254nm	≥165μw/cm ²	≥75%	380mA	0°C~35°C	35	894	G13	6,000
U18-30W-02	220-240V 50/60Hz										
U18-40W-01	100-120V 50/60Hz	40W	254nm	≥220μw/cm ²	≥75%	420mA	0°C~35°C	35	1198	G13	6,000
U18-40W-02	220-240V 50/60Hz										

Feature

Feature-1

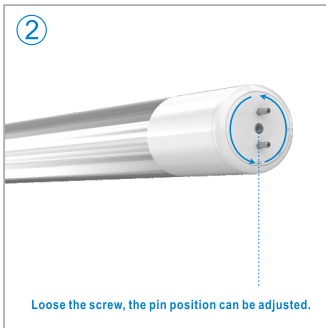
1. Intelligent desing: Before the light starting, the tube will have a 10s warning beep sound. If there is any movement detected, the light won't turn on. This is to make sure there are no people in the purificationion area. People are safe and well protected.

2. Design of intelligent sensor: When the light is on, the light will be turned off immediately if unexpected entry detected. It won't hurt people and is safe to use.

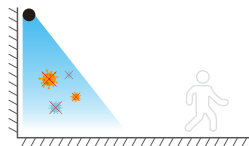


Feature-2

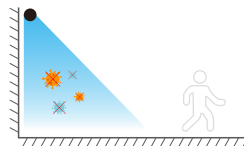
Field-adjustable tube pin



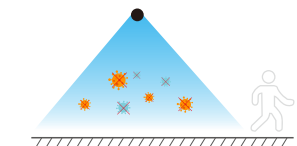
Rotation 0°
0° upstraight install to the wall



Rotation 45°
45° installation purificationion area is larger than 0° installation



Rotation 90°
90° is for ceiling surface mounting



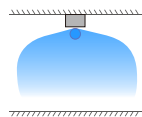
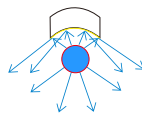
Feature-3

Higher UVC irradiation: U18, by using mirror aluminum as reflector, its UVGI(Ultraviolet purification Irradiation) intensity is two times of the regular UVC tube light in the market.



U18

U18 with mirror aluminum, the UVC light will be averagely reflected to specified area, thus the efficiency of purificationion is higher a lot.



40W 1m distance **220**uw/cm²



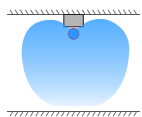
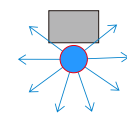
VS

Regular UVC tube

Regular UVC tube, the light is lack of directivity, the directional purificationion is slow, thus efficiency is low.

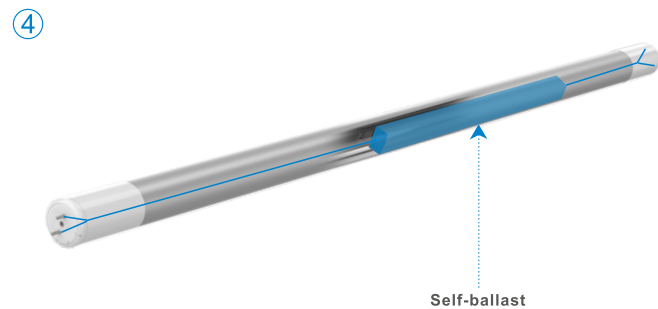


40W 1m distance **115**uw/cm²



Feature-4

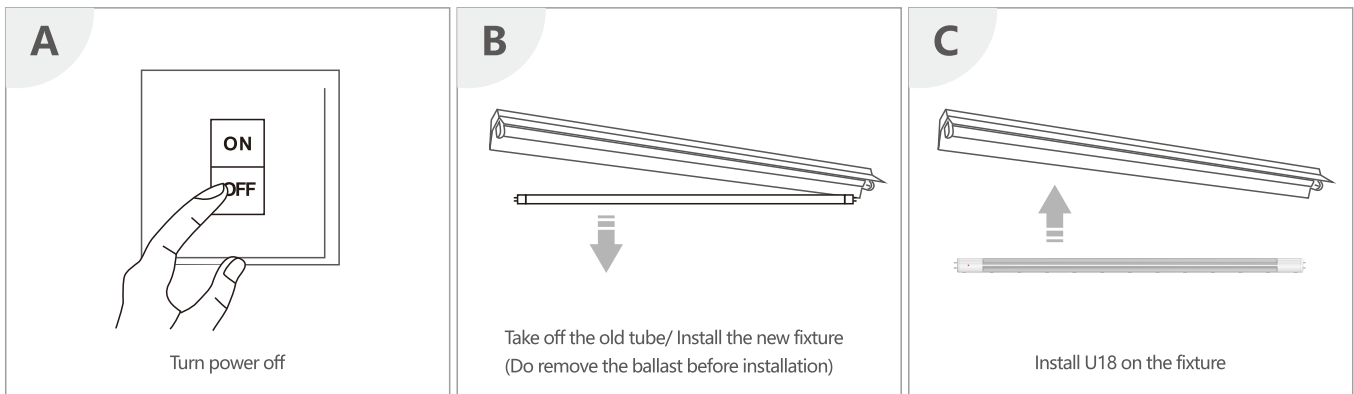
Self-ballast: The built-driver makes the UVC tube light more convenient to be installed in the existing fixtures. No need to buy new fixtures or new drivers.



Application

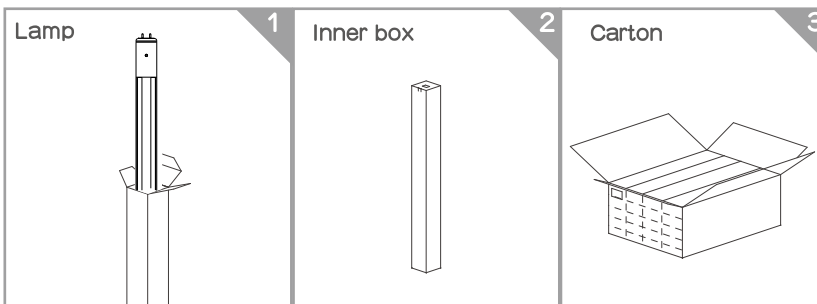


Installation



Packing

Model No.	Inner box size (mm) (x0.0393=inch)	N.W per lamp (kg) (lbs=kgx2.2)	G.W per lamp (kg) (lbs=kgx2.2)	G.W per Carton (kg) (lbs=kgx2.2)	Carton size (mm) (x0.0393=inch)	Quantity per carton
U18-20W	634x60x60mm	0.30Kg	0.40Kg	5.3Kg	649x255x198mm	12PCS
U18-30W	939x60x60mm	0.37Kg	0.50Kg	6.8Kg	945x255x198mm	12PCS
U18-40W	1243x60x60mm	0.57Kg	0.75Kg	10.1Kg	1258x255x198mm	12PCS



CAUTIONS

- Risk of electric shock. Do not use in the locations directly exposed to water.
- Avoid eyes and skin exposure directly to UV light when the light is on.
- Do not take apart the tube light without our permit.

GK SHENZHEN GUANKE
TECHNOLOGIES CO., LTD

Bldg 34, XiaLang Industrial Zone, HeShuiKou Community, MaTian St.,
GuangMing Dist., ShenZhen 518106, China

Tel: +86-755-27165559
E-mail: cooper@gkuvc.com

Fax: +86-755-27543939
Web: www.gkuvc.com