



Stainless Steel Shower Column With Waterfall

Stainless steel shower column with waterfall features hot and cold water/multi-function shower panel. Suitable for hotel residences with a modern design. Material 304 stainless steel, thickness 1.0MM. If necessary, please contact us and we will reply to your information as soon as possible.

Product Description

Stainless Steel Shower Column With Waterfall Quick Details

Feature	Cold&Hot water / Multi-Function Shower Panel
Material	304 Stainless steel, thickness: 1.0MM
Warranty	3 years
Ceramic Cartridge	35mm ceramic cartridge
Cartridge Lifetime	500,000 times Open and Close
Flexible Hose	150cm; 304 stainless steel
Installing Accessories	Stainless steel

Model	YNS-6724
Size	1600X200X460
Delivery time	20-30 days
Laser logo	YES (on handle)
MOQ	1pcs
Sample ready time	1- 5 days



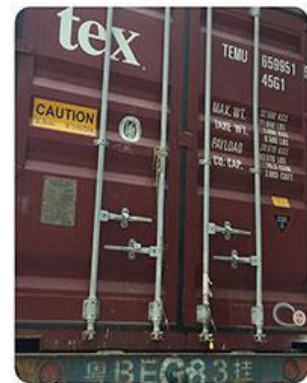
OEM/ODM	YES
Payment term	T/T ,Western Union ,MoneyGram,L/C,D/A,D/P and so on

Surface Treatment	Chrome plated
Layer of Nickel	Nickel: 3-5um
Layer of Chrome	Chrome: 0.1-0.3um
Pressure Testing	0.6-0.8MPA (8-10bar, NO Leakage)
Package	Inner box Form; outer box Paper box

Packaging

Package Detail: Packaging can be made according to your request

Delivery Detail: It depends on your order quantity. Normally 20-30 days after order confirmed.



Shipping

Shipping by sea, by air, by express are all acceptable. According to your requests. Sending the goods to your Chinese agent's warehouse also is workable.

LOGISTICS



FAQ

Q: Whats your main port of lading?

A: Ningbo/Shanghai

Q: How about certificate?

A: We have CE. BM TRADA certificate

Q: Could I buy a sample befor place the order?

A: Yes.it is ok. Welcome to your samples orders.

Q: What is your main market?

A: Europe and America Japan, southeast and the Middle East.

Q: Whafs your package?

A: In standard export cartons, but could be designed as your request.



www.yanasibathroom.com

Q: What is your MOQ?

A: Usually our MOQ is 1,000 pcs. But we accept lower quantity for your trial order.