



SLFC-1



SLFC-2



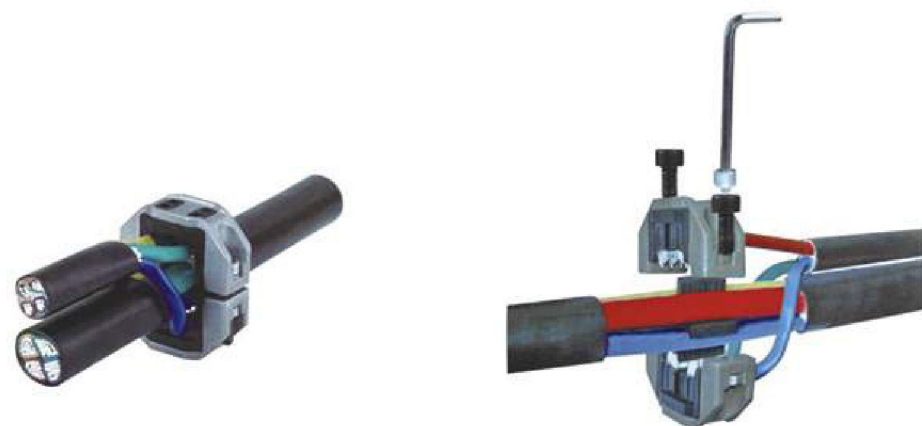
SLFC-3



SLFC-4



SLFC-5



1kV and below four core piercing connector (cable sockets) selection table

Type	(mm ²) Main Section		(mm ²) Branch Section	
	Strand Cable	Solid Core Wire	Strand Cable	Solid Core Wire
SLFC-1	50-70	70-95	6-50	6-70
SLFC-2	70-120	95-150	6-50	95-150
SLFC-3	95-120	120-150	(Fan-shaped) 35-120 (Circle) 10-95	(Fan-shaped) 50-150 (Circle) 16-120
SLFC-4	150-185	150-240	6-70	6-70
SLFC-5	185-240		6-70	6-70

Usage and cautions

Four core piercing connector is mainly applied to high current trunk to branch, the main cable insulation without stripping, one connector can quickly branch to four extension, Almost no space is occupied, the shell is made of aluminum parts, high ultimate strength, reusable, It is superior than the cable piercing puncture connector.

