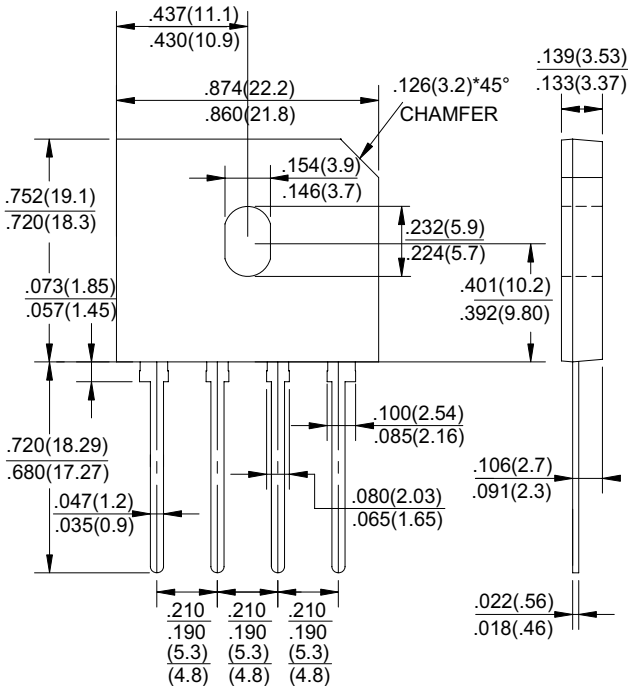


GBU4005 thru GBU410 SERIES

GLASS PASSIVATED BRIDGE RECTIFIERS

REVERSE VOLTAGE - 50 to 1000Volts FORWARD CURRENT - 4.0Amperes



Dimensions in inches and (millimeters)

Package: GBU

FEATURES

- Surge overload rating -150 amperes peak
- Ideal for printed circuit board
- Reliable low cost construction utilizing molded plastic technique
- flammability classification 94V-0
- Mounting position: Any
- Weight: 0.134 ounces , 3.79grams

MAXIMUM RATINGS AND ELECTRICAL CHARACTERISTICS

Rating at 25°C ambient temperature unless otherwise specified. Single phase, half wave ,60Hz, resistive or inductive load. For capacitive load, derate current by 20%

CHARACTERISTICS	SYMBOL	GBU4005	GBU401	GBU402	GBU404	GBU406	GBU408	GBU410	UNIT
Maximum Recurrent Peak Reverse Voltage	VRRM	50	100	200	400	600	800	1000	V
Maximum RMS Voltage	VRMS	35	70	140	280	420	560	700	V
Maximum DC Blocking Voltage	VDC	50	100	200	400	600	800	1000	V
Maximum Average Forward (with heatsink Note 2) Rectified Current @ Tc=100°C (without heatsink)	IAV					4.0			A
Peak Forward Surge Current 8.3ms Single Half Sine-Wave Super Imposed on Rated Load (JEDEC Method)	IFSM					150			A
Maximum Forward Voltage at 4.0A DC	VF					1.1			V
Maximum DC Reverse Current @ Tj=25°C at Rated DC Blocking Voltage @ Tj=125°C	IR					10.0			uA
I ² t Rating for Fusing (t<8.3ms)	I ² t					93			A ² s
Typical Junction Capacitance Per Element (Note1)	CJ					45			pF
Typical Thermal Resistance (Note2)	RθJC					2.2			°C/W
Operating Temperature Range	TJ					-55 to +150			°C
Storage Temperature Range	TSTG					-55 to +150			°C

NOTES: 1. Measured at 1.0MHz and applied reverse voltage of 4.0V DC.

2. Device mounted on 50mm*50mm*1.6mm cu plate heatsink.

GBU4005 thru GBU410 SERIES

FIG.1-FORWARD CURRENT DERATING CURVE

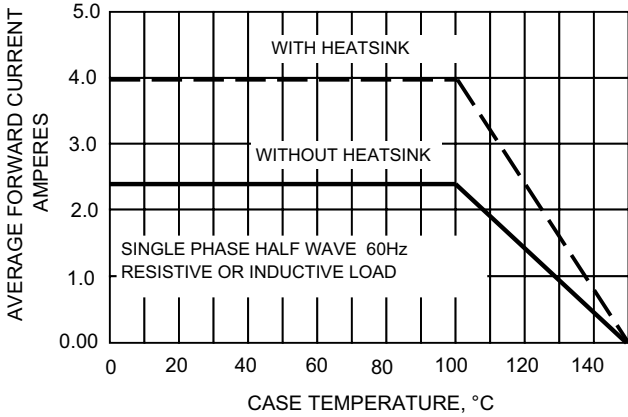


FIG.2-MAXIMUM NON-REPETITIVE SURGE CURRENT

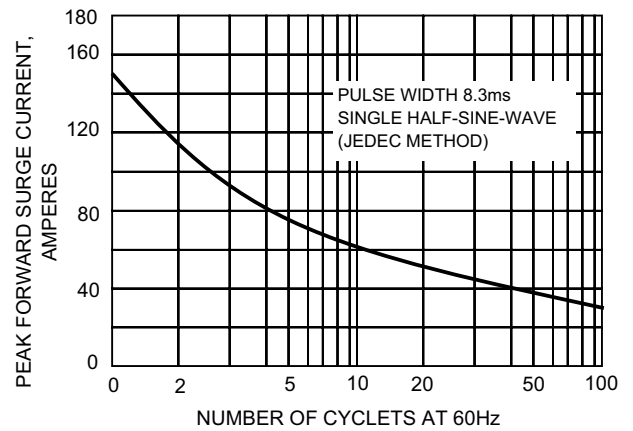


FIG.3-TYPICAL JUNCTION CAPACITANCE

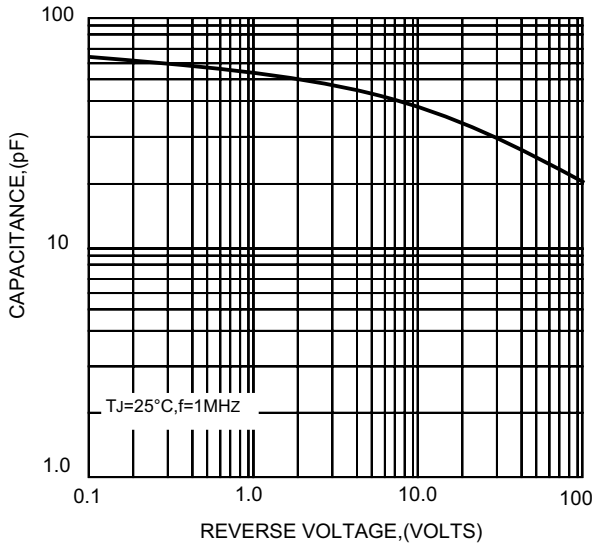


FIG.4-TYPICAL FORWARD CHARACTERISTICS

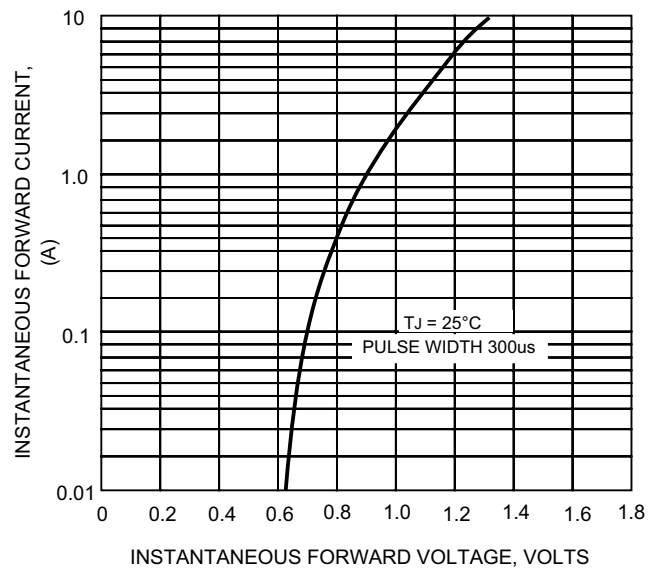


FIG.5-TYPICAL REVERSE CHARACTERISTICS

