



Residential Sprinklers

We supply Residential Sprinklers. The HISPEED® Residential Sprinklers are designed for life safety by providing occupants additional time to exit a structure in the event of a fire. Structures that may utilize residential sprinkler systems include single and multi-family homes, apartments and condominiums, student housing, and some hotels. Residential sprinkler systems using HISPEED® Residential Sprinklers can have long-term financial

benefits, including reducing insurance premiums, increasing home value for homeowners, and improving the reputation for home builders. We offer the industry's most comprehensive range of residential sprinklers to suit any decor, budget, and water supply. We are expecting to become your long term partner in China.

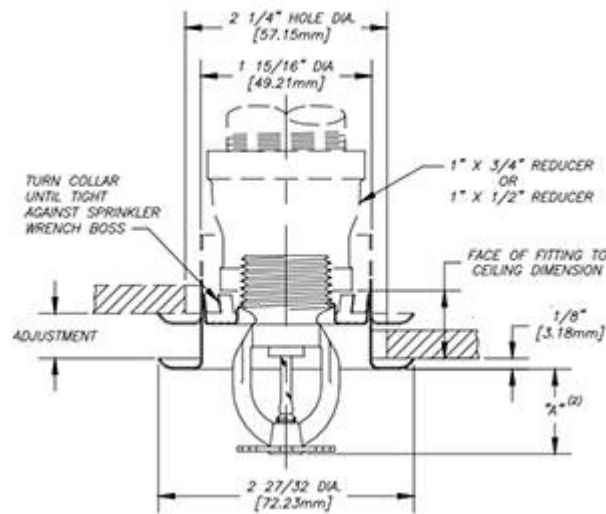
Product Description

You can rest assured to buy Hispeed® Residential Sprinklers from our factory and we will offer you the best after-sale service and timely delivery.

The HISPEED® Residential Sprinklers are designed for life safety by providing occupants additional time to exit a structure in the event of a fire. Structures that may utilize residential sprinkler systems include single and multi-family homes, apartments and condominiums, student housing, and some hotels. Residential sprinkler systems using HISPEED® Residential Sprinklers can have long-term financial benefits, including reducing insurance premiums, increasing home value for homeowners, and improving the reputation for home builders. We offer the industry's most comprehensive range of residential sprinklers to suit any decor, budget, and water supply. We are expecting to become your long term partner in China.

Well-run products, skilled income group, and better after-sales products and services; We have been also a unified massive family, all people stick with the business price "unification, dedication, tolerance" for Bottom price China Manual Pipe Pressure Test Pump in Residential and Industrial Construction, Never-ending improvement and striving for 0% deficiency are our two main quality policies. Should you need anything, never hesitate to get in touch with us. Bottom price China Manual Pressure Test Pump, Pressure Test Pump, Now, we've been trying to enter new markets where we do not have a presence and developing the markets we've got the already penetrated. On account of superior quality and competitive price, we'll be the market leader, you should don't hesitate to contact us by phone or email, if you are interested in any of our products and solutions.

Product Parameter (Specification)



Product Feature And Application

Temperature Ratings

155°F (68°C)

175°F (79°C)

Technical Specifications

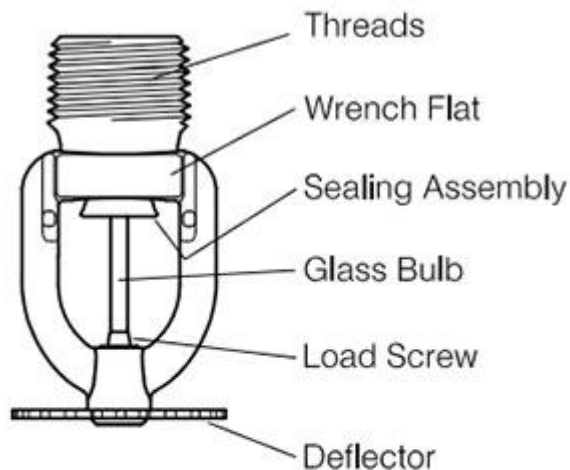
Style: Pendent and Recessed Pendent

Threads: 1/2" NPT or ISO7-1R1/2

Nominal K-Factor: 3.0 (43 metric)

Max. Working Pressure: 175 psi (12 bar)

Product Details



Material Specifications

Thermal Sensor: 3 mm Glass Bulb

Sprinkler Frame: Brass Alloy

Cap: Bronze Alloy

Sealing Washer: Nickel with PTFE

Load Screw: Copper Alloy

Deflector: Brass Alloy

Deliver,Shipping And Serving

Ship from Qingdao or another Seaports

FAQ

	Q	A
1	How many days you need to install the equipment?	Unwanted.
2	How many staff abroad you sent to install the equipment?	Unwanted.
3	Can I transfer the money to you then you pay to other supplier?	YES.
4	Can I delivery the goods from other supplier to your factory? Then load together?	YES.
5	When will you leave your factory and to have your spring festival holidays?	According to national regulations.
6	Can the equipment be installed under hot weather?	YES.
7	Can Your products be installed under the cold weather?	YES.
8	Do You have office in shanghai or guangzhou that i can visit?	NONE.
9	Can you send your staff to install the equipment for us?	Unwanted.
10	Can I only buy some spare parts from you?	YES.
11	Will you will attend the fair to show your products?	YES.
12	Can you send your equipment to my warehouse in guangzhou?	YES.
13	How long it takes you to provide the designing options for us?	3 days at most.
14	What is your products standardization?	AWWA BS AIP WRAS FM.
15	How do you pack the	Negotiate with the customer.

	equipment?	
16	Can you can design the equipment according to our size?	YES.
17	How many years have your company made this kind of equipment?	5 years.
18	Which certificate do you have for your equipment?	FM.
19	How many staffs do you have in your factory?	200
20	Do you have any agent in our country?	NONE.
21	Do you have any real project pictures of the equipment?	YES.
22	How far is your factory from the city hotel?	10 km.
23	How far is your factory from the airport?	10 km.
24	How long it will take from guangzhou to your factory?	5 hours.
25	Where is your factory located?	Weifang City,Shandong province.
26	Do you provide free spare parts?	It depends.
27	What is the age range for your products?	Everyone.
28	Do you have detailed and professional installation manual?	YES.
29	If OEM is acceptable?	YES.
30	Do you provide sample? Free or charge?	It depends.
31	What is your term of payment?	30% payment in advance, 70% paid before shipment.
32	What is your MOQ?	One container.
33	Are you a trading company or a manufacturer?	Trade and Industry combination group company.

34	How long is your delivery time?	25-40 days.
----	---------------------------------	-------------