



## Euro Type Plastic Granulator

Euro Type Plastic Granulator:  
Aumax Plast European type centralized plastic granulator crusher machines are mainly used to granulate all kinds of plastic materials and products. AMG-G series plastic recycling crusher machines are suitable to crush different small and big, hard and soft plastic wasted products in different

sizes and shapes like plastic drinking bottles, plastic films and thermoforming sheets with different thickness and width, PVC pipes and pipe fittings with different diameter and dimensions, plastic lumps and blocks, HDPE plastic drums and chemical barrels, etc. AMG-G series plastic recycling granulator machines are widely used in plastic recycling industry.

## Euro Type Plastic Granulator

### 1. Euro Type Plastic Granulator Introduction

Aumax Plast European type centralized plastic granulator crusher machines are mainly used to granulate all kinds of plastic materials and products. AMG-G series plastic recycling crusher machines are suitable to crush different small and big, hard and soft plastic wasted products in different sizes and shapes like plastic drinking bottles, plastic films and thermoforming sheets with different thickness and width, PVC pipes and pipe fittings with different diameter and dimensions, plastic lumps and blocks, HDPE plastic drums and chemical barrels, etc. AMG-G series plastic recycling granulator machines are widely used in plastic recycling industry.

### 2. Euro Type Plastic Granulator Parameter (Specifications)

Model		AMG-400G	AMG-500G	AMG-600G	AMG-800G	AMG-800G+	AMG-1000G
Power	kw	11	15	18.5	30	37	45
Rotor Speed	rpm	560	560	560	560	560	560
Rotating Blades	V type	/	/	6	6	6	6
	F	12	15	18	24	24	30

Ningbo Aumax Plastic Machinery Co., Ltd

Address: No. 216, Lianhe Rd., Ningbo Economic & Tech Development Zone, Beilun, Ningbo, China

Phone: +86-13819843291

Tel: +86-574-26850648

Fax: +86-574-26855258

E-mail: sales@aumax-plast.com

	type						
	C type	24	30	36	48	48	60
Fixed Blades	pcs	2	4	4	4	4	4
Screen Diameter		Ø10	Ø10	Ø12	Ø12	Ø12	Ø12
Chamber Size	mm	270x400	270x500	370x600	370x800	480x800	480x1000
Output	kg/h	300~550	400~650	500~700	600~900	800~1200	900~1500
Noise	dB(A)	80~95	80~95	80~95	80~95	80~95	80~95
Magnet at Feeding Mouth		Optional					
Blower Conveying & Cyclone System		Optional					
Manual Box		Included					
Weight	kg	650	720	1250	1450	1850	2050
Dimensions:							
L	mm	1320	1320	1650	1650	1800	1800
W	mm	960	1060	1190	1390	1450	1650
H	mm	1490	1490	1880	1880	2150	2150

Please excuse for not note if some specifications of products are changed.

Note:

- 1) V-type rotating blades are standard type for AMG-600G/800G/800G+/1000G; F-type flat rotating blades are standard type for AMG-400G and AMG-500G; C-type claw rotating blades is optional to purchase.
- 2) The maximum crushing output depends on the screen diameter, material quality and feeding frequency.
- 3) The screen mesh diameter can be made according to customers' request.
- 4) The running noise depends on varied shredding material.
- 5) The standard power supply is 3Ø 380V 50Hz. Other power supply is available.

### 3. Euro Type Plastic Granulator Features & Application

I SKD11 material blades and special designed blades structure insure high efficiency and performance

Ningbo Aumax Plastic Machinery Co., Ltd

Address: No. 216, Lianhe Rd., Ningbo Economic & Tech Development Zone, Beilun, Ningbo, China

Phone: +86-13819843291

Tel: +86-574-26850648

Fax: +86-574-26855258

E-mail: sales@aumax-plast.com

- | Optimized designed bearings block keep dust away, with low running temperature for long life using
- | V-shaped blades, Claw blades and Flat blades are optional for different plastic wastes
- | Electric motor screw device for opening and closing cutting chamber to save manpower
- | Separate structure design for cutting chamber and screen mesh, easy to clean and maintenance
- | Safety switch to protect people, overload device to protect motor
- | Fixed with shockproof pad to reduce vibration and noise.

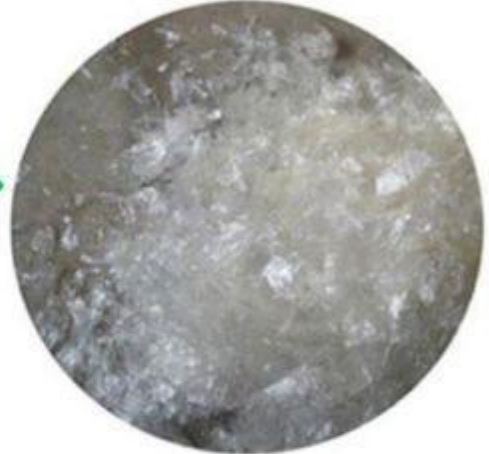
**Plastic materials before crushing and after crushing:**



**Plastic films**



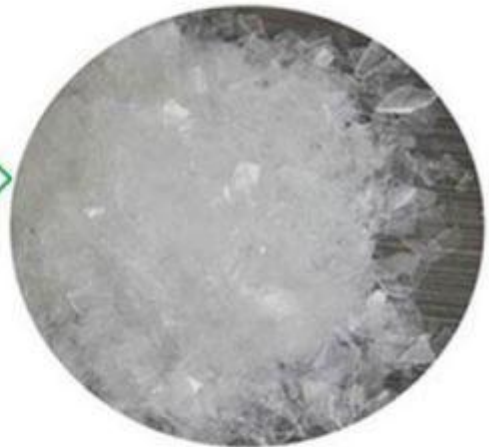
**Scraps**



**Plastic bottles**



**Flakes**



**Plastic pipes**



**Scraps**





[www.aumaxplast.com](http://www.aumaxplast.com)

#### **4. Euro Type Plastic Granulator Details**

AMG-G Series plastic recycling crusher machine equipped with motor + screw system to open and close the crushing chamber, high efficiency good quality motor, European type cutting room and blades structure, global top brand electric parts.

Ningbo Aumax Plastic Machinery Co., Ltd

Address: No. 216, Lianhe Rd., Ningbo Economic & Tech Development Zone, Beilun, Ningbo, China

Phone: +86-13819843291

Tel: +86-574-26850648

Fax: +86-574-26855258

E-mail: [sales@aumax-plast.com](mailto:sales@aumax-plast.com)





Combined **Control Panel**,  
easy to operate machine

Global top brand **Electric Components** ensure machine working stable.



High efficiency all copper wire **Motor** ensures machine working powerful and energy-saving.

Double **Fly Wheels** increase rotor running inertia, it makes machine with bigger strength and output capacity.



Optimized **Blades Structure**,  
easy to change blades and clean machine.

Adopts **Air Spring Rod** to save manpower for open and



## 5. Euro Type Plastic Granulator Qualification

Aumax Plast has been focusing on R&D and manufacturing of plastic recycling machine and auxiliary equipment for injection molding machine, blowing molding machine and plastic extrusion line for more than 15years.

We have obtained various domestic and foreign certifications such as ISO9001, ISO14001, CE, etc., which fully demonstrates that our products fully comply with international standards and the quality of products is guaranteed.



## 6. Delivery, Shipping and Serving

Normally, the delivery time of our plastic machines is 10-20 days after order confirmed and advance payment. Most of our products are packed in plywood cases. For small machines like Vacuum Autoloaders are packed in corrugated case. Usually, we ship large machines by LCL or FCL ocean shipping. Sometimes, customers need machine urgently, we ship machine by air or express.

Ningbo Aumax Plastic Machinery Co., Ltd

Address: No. 216, Lianhe Rd., Ningbo Economic & Tech Development Zone, Beilun, Ningbo, China

Phone: +86-13819843291

Tel: +86-574-26850648

Fax: +86-574-26855258

E-mail: sales@aumax-plast.com

**Packing:**



**Shipping:**



Sea Transportation



Air Transportation



Express

## 7. FAQ

**1. Q: What is the MOQ?**

A: The MOQ is 1 set for all products.

**2. Q: Where is the loading port?**

A: The nearest port to our factory is port of Ningbo, China, as well as we can send machine to Yiwu, Shanghai, Guangdong or any other cities in China.

**3. Q: What are the payment terms?**

A: The preferential payment term is T/T, while other payment terms are negotiable.

**4. Q: What are your terms of delivery?**

A: We accept FOB, CFR, CIF, EXW, and DDU. You can choose the terms which is the most convenient and cost effective to you.

**5. Q: How does your factory carry out quality control?**

Ningbo Aumax Plastic Machinery Co., Ltd

Address: No. 216, Lianhe Rd., Ningbo Economic & Tech Development Zone, Beilun, Ningbo, China

Phone: +86-13819843291

Tel: +86-574-26850648

Fax: +86-574-26855258

E-mail: sales@aumax-plast.com





[www.aumaxplast.com](http://www.aumaxplast.com)

A: Powerful R&D teams and professional QC department take care of every detail during design, processing, assembling, testing and packing.

**6 Q: Can you supply OEM and customized products?**

A: Yes, we can supply OEM / ODM service. Our engineers have rich experience in design and production of plastic auxiliary equipment. We can supply special products according to your ideas and drawings.

**7. Q: What about warranty terms?**

A: We provide one year warranty for all of our products. During warranty period, if any machine parts damaged due to quality, we will send the new parts by courier immediately by free of charge. Also, we supply 24 hours online service and technical support.

Ningbo Aumax Plastic Machinery Co., Ltd

Address: No. 216, Lianhe Rd., Ningbo Economic & Tech Development Zone, Beilun, Ningbo, China

Phone: +86-13819843291

Tel: +86-574-26850648

Fax: +86-574-26855258

E-mail: [sales@aumax-plast.com](mailto:sales@aumax-plast.com)