

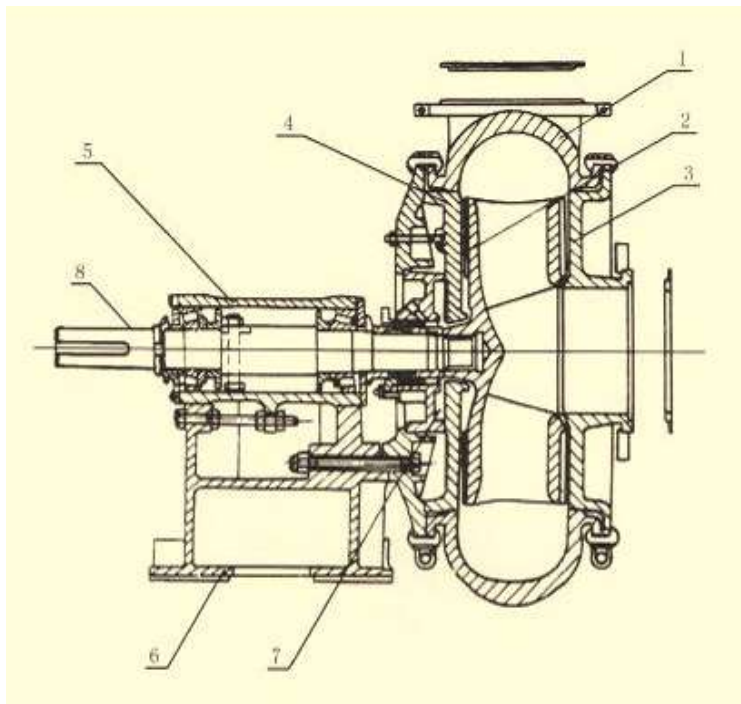


# MG GRAVEL PUMPS

Norky Wei  
Whatsapp: +86 188 3028 9136 Tel: +86 188 3028 9136  
Email: [norky@deonpump.cn](mailto:norky@deonpump.cn) Web: [www.deonpump.com](http://www.deonpump.com)

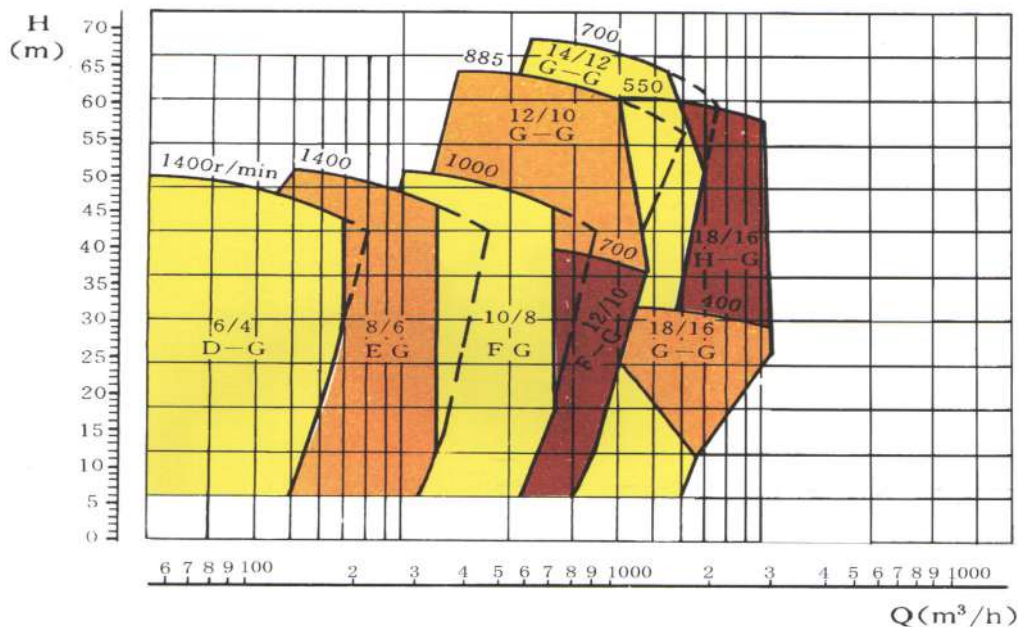
The MG&MGH series gravel pumps are designed for continuously handing the most difficult higher abrasive slurries which contain too big solids to pumped by a common pump. They are suitable for delivering slurries in mining explosive sludge in metal melting, dredging in dredger and course of rivers, and other fields. Type MGH pumps are of high head ones.

Construction of this pump is of single casing connected by means of clamp bands and wide wet-passage. The discharge direction of pump can be oriented in any direction of 360°. This type of pump possesses the advantages of easy installation and operation, good performance of NPSH and abrasion resistance.



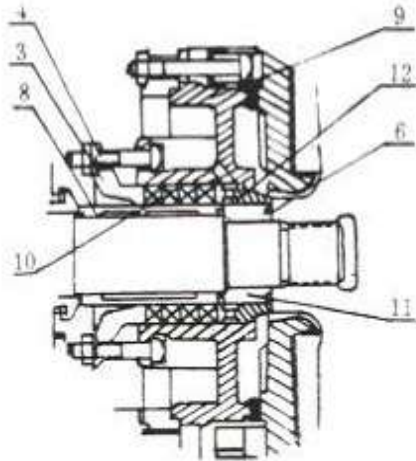
1-Frame Plate
2-Impeller
3-Cover Plate
4-Frame Plate Liner
5-Bearing Assembly
6-Frame
7-Stuffing Box
8-Shaft

**curves**

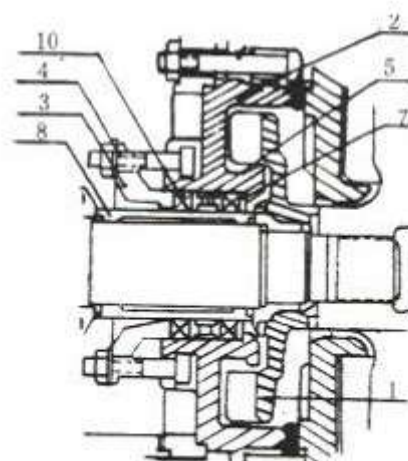


# Type of Seal

Packing Seal



Expeller Seal

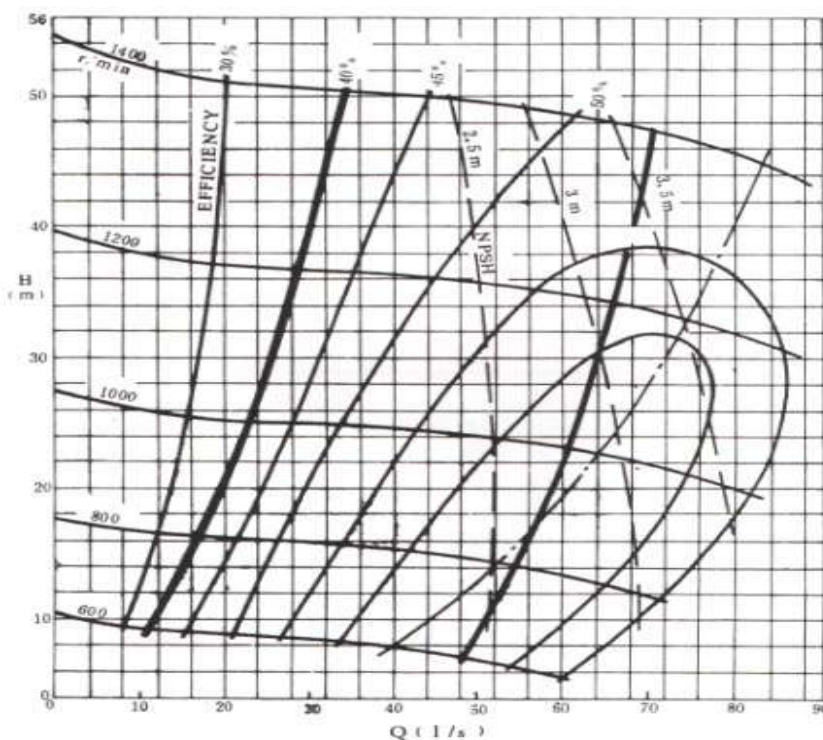


1-Expeller	2-Expeller Ring	3-Gland Assembly	4-Stud
5-Lantern Ring	6-O Ring	7-Gasket	8-Shaft Sleeve
9-Stuffing Box	10-Packing	11-Short Sleeve	12-Front Lantern Ring

## MG&MGH series Gravel pump Performance Curve

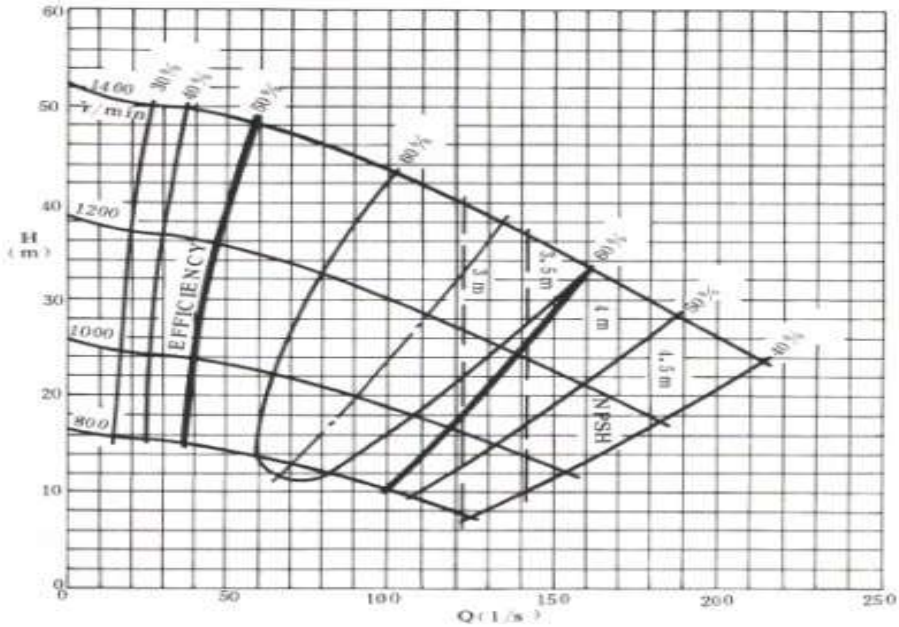
### Performance curve of 6/4 MD(Q)-G

Pump Type	6/4MD(Q)-G	Impeller Code	DG4137	Date	2010.1
Diameter of inlet/outlet(IN)	6/4	Permissible max. particle size (mm)		82	
Flow(l/s)	10-70	Head(m)	6-50	Power max. (kw)	60(150)



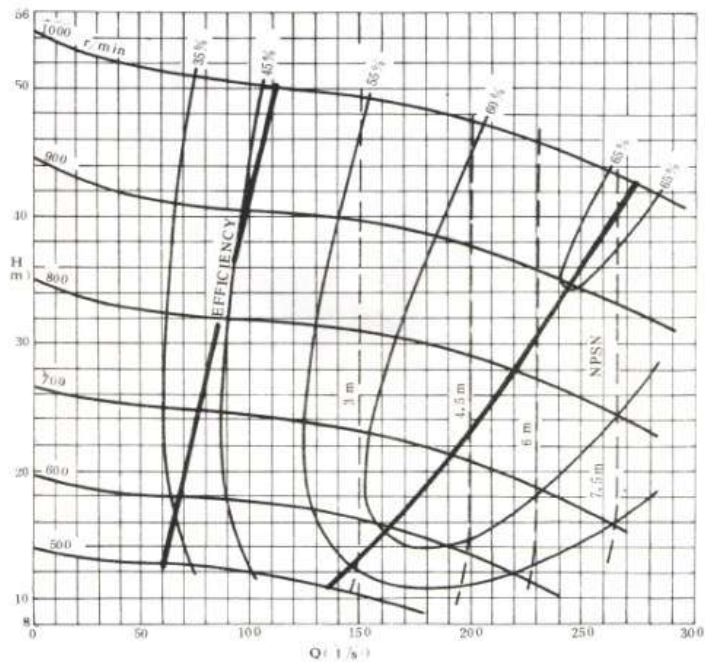
### Performance curve of 8/6ME-G

Pump Type	8/6ME-G	Impeller Code	EG86137	Date	2010.1
Diameter of inlet/outlet(in)	8/6	Permissible max. particle size (mm)		127	
Flow(l/s)	10-220	Head(m)	6-52	Power max. (kw)	120



### Performance curve of 10/8MF(S)-G

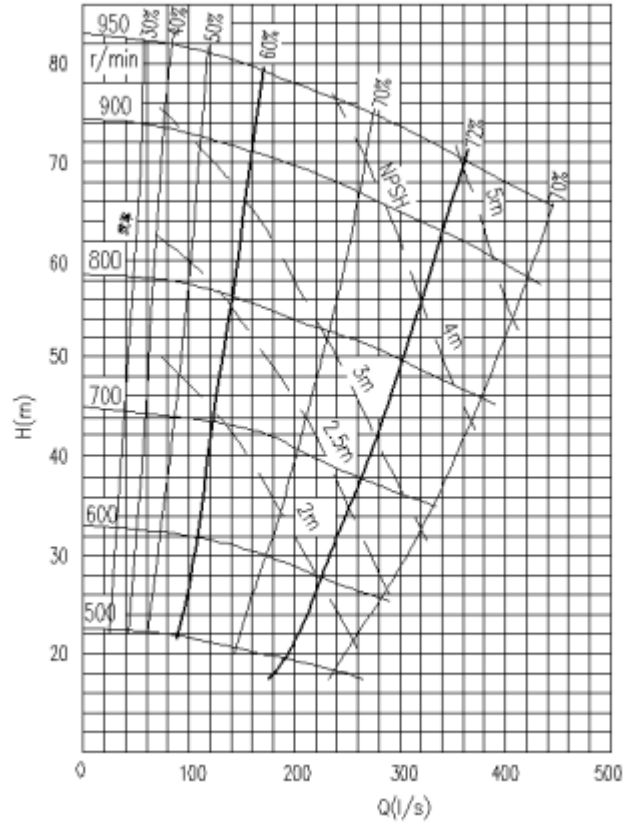
Pump Type	10/8MF(S)-G	Impeller Code	FG8137	Date	2010.1
Diameter of inlet/outlet(IN)	10/8	Permissible max. particle size (mm)		178	
Flow(l/s)	50-270	Head(m)	10-50	Power max. (kw)	260(560)





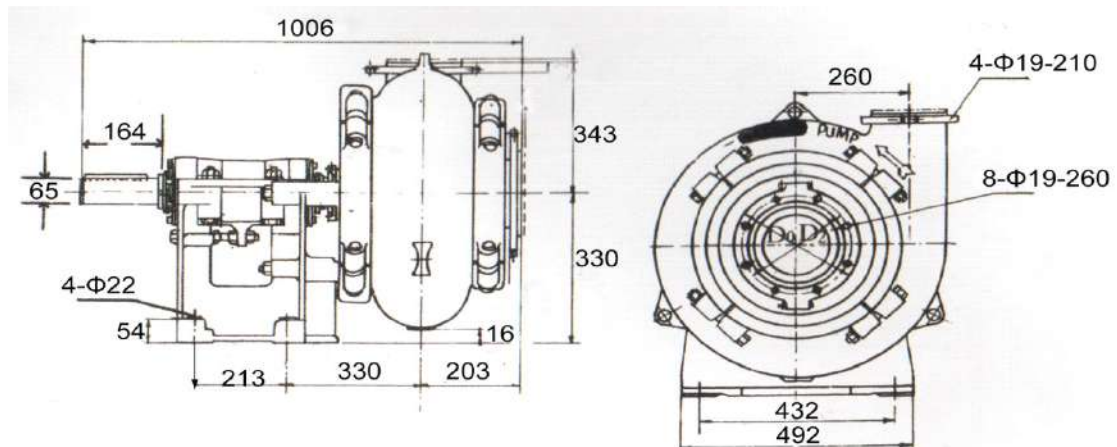
### Performance curve of 10/8MS-GH

Pump Type	10/8MS-GH	Impeller Code	FGH8137	Date	2010.1
Diameter of inlet/outlet(IN)	10/8	Permissible max. particle size (mm)		180	
Flow(l/s)	20-420	Head(m)	16-80	Power max. (kw)	560

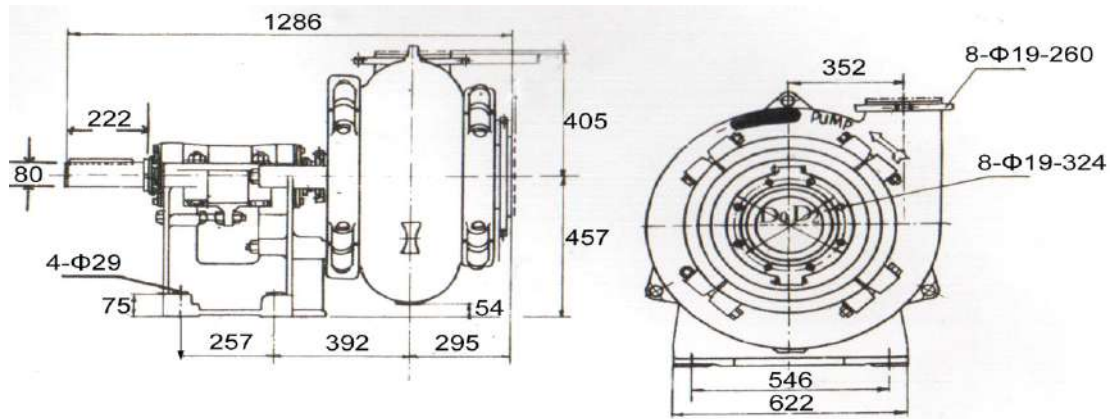


### MG&MGH series Gravel pump Construction Drawing

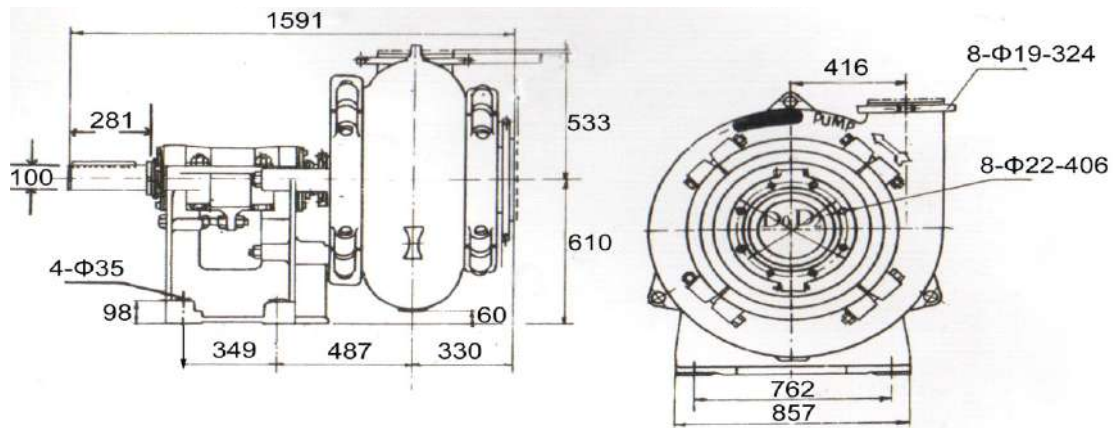
#### 6/4MD(Q)-G



**8/6ME-G**



**10/8MF(S)-G**



**10/8MS-GH**

